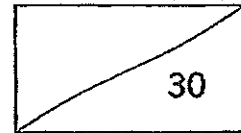


ROSYTH SCHOOL
PRIMARY 1
MATHEMATICS
TERM 2
TOPICAL TEST



Name: _____ ()

Marks:

Class: P1 - _____

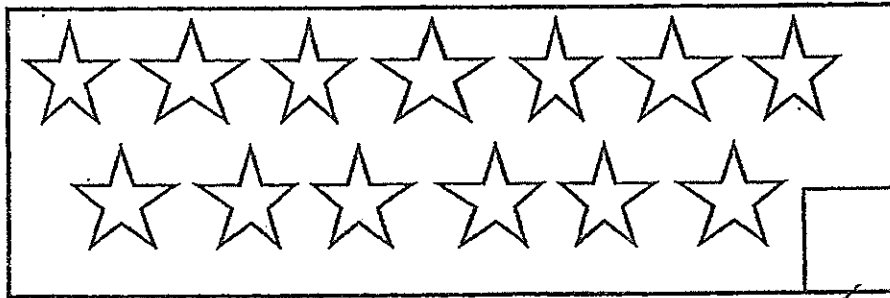
Date: 7 May 2014

Time: 40 minutes

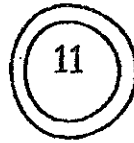
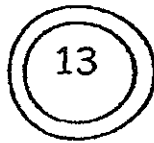
Parent's Signature: _____

Read the questions carefully. Answer all questions.

1. Count the stars and write the number in the box provided.

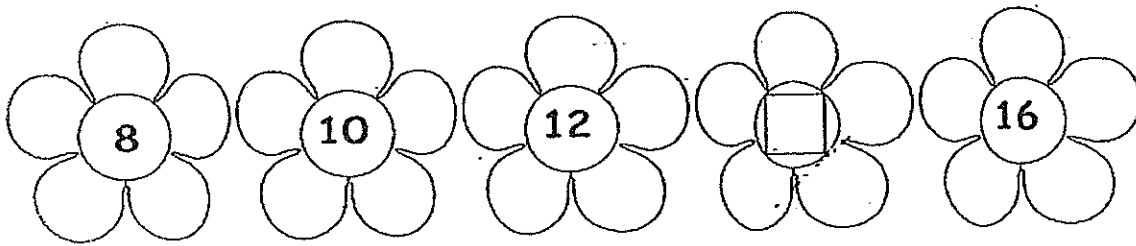


2. Arrange the numbers in order from the greatest to the smallest.

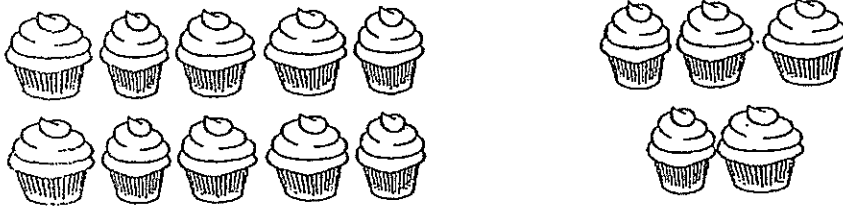


(greatest)

3. Study the number pattern below.
Fill in the missing number in the flower.

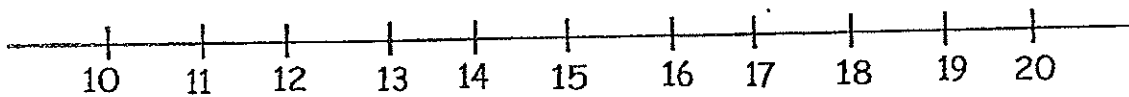


4. Fill in the missing number.



10 and 5 make

5. Fill in the blanks with the correct answer.
You may use the number line to find the answer.



(a)

$11 + 3 =$

(b)

$16 +$

$= 18$

6. Circle two boxes that give the same answer.

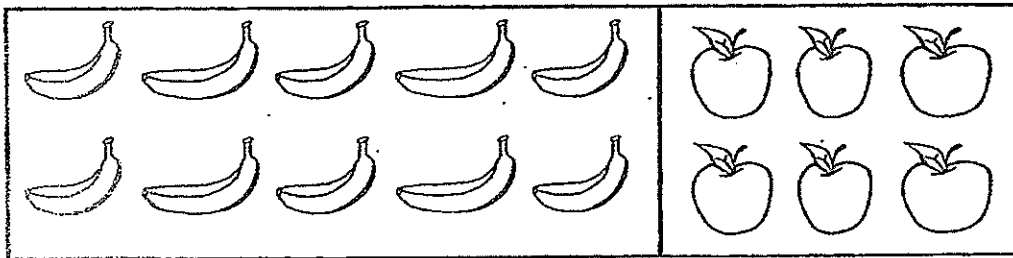
$$9 + 3$$

$$8 + 3$$

$$8 + 5$$

$$5 + 7$$

7. Write an addition equation based on the picture below.



$$\square + \square = \square$$

8. Study the picture below.

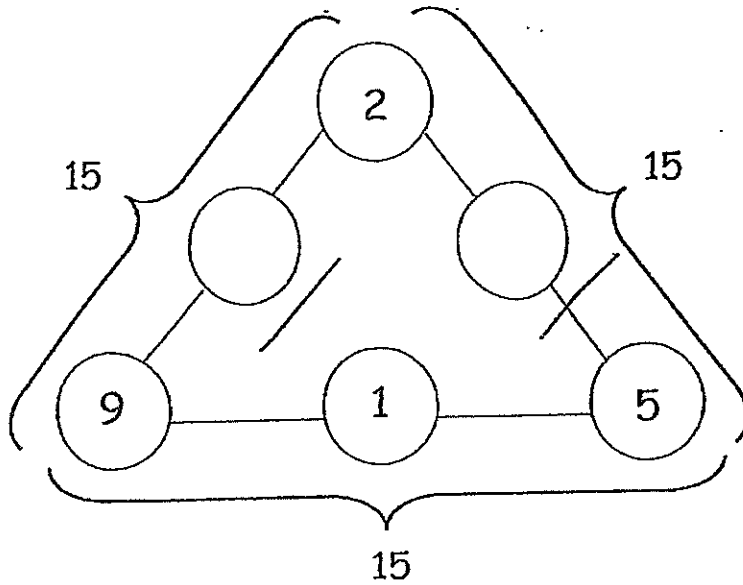
Fill in the box provided with the correct answer.

$$\star + \star = 8$$

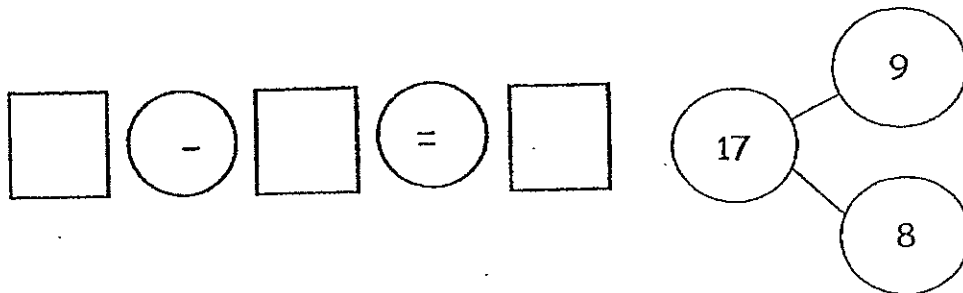
$$\star + \text{smiley face} = 11$$

$$\text{smiley face} = \square$$

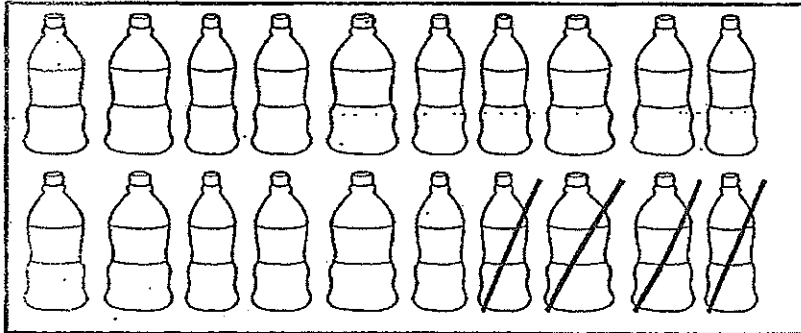
9. Fill in the circles so that each side of the triangle adds up to 15.



10. Study the number bond and complete the subtraction equation.



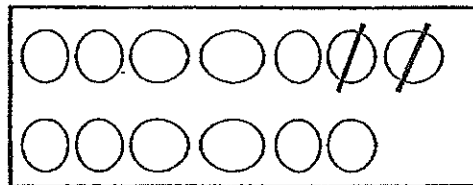
11. Write a subtraction equation based on the picture below.



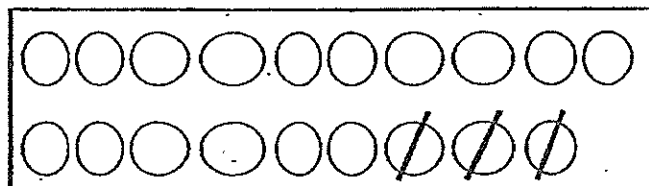
$$\square - \bigcirc = \square$$

12. Fill in the blanks:

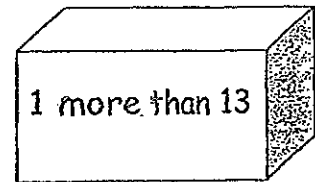
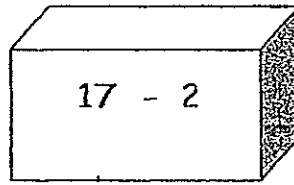
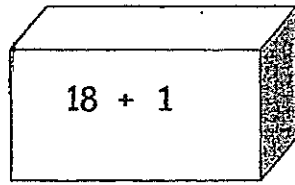
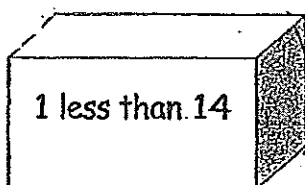
(a) $13 - \square = 11$



(b) $\square - 3 = 16$



13. Circle the box that gives the smallest answer.



14. Choose 3 numbers to form a subtraction equation.
Use the numbers only once.

7, 13, 11, 5, 8

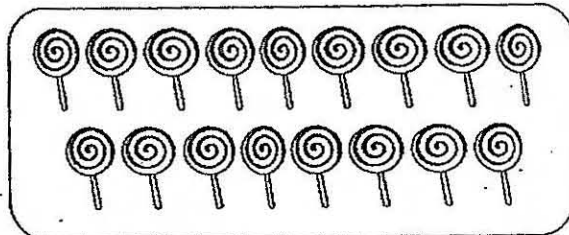
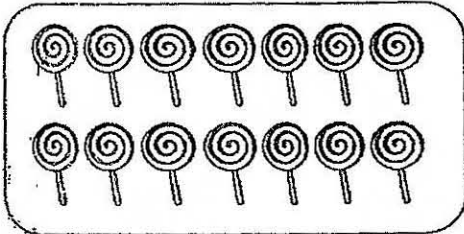
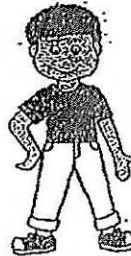
- =

15.

Sally



Tim



Sally needs more lollipops so that she has the same number of lollipops as Tim.

END OF PAPER

YEAR: 2014
LEVEL: P1
SCHOOL: ROSYTH
SUBJECT: MATHEMATICS
SEMESTER: SA1

1. 13
2. 19, 16, 13, 11
3. 14
4. 15
5. a) 14
b) 2
6. $(9 + 3)$ and $(5 + 7)$
7. $10 + 6 = 16$
8. 7
9. 4, 8
10. $17 - 9 = 8$
11. $20 - 4 = 16$
12. a) 2
b) 19
13. 1 less than 14
14. $13 - 5 = 8$
15. 3

