

CA1

METHODIST GIRLS' SCHOOL (PRIMARY)
SCIENCE
CONTINUAL ASSESSMENT 1
PRIMARY 3
2005

Name : _____ ()

Marks :



Class : P 3. _____

Date : 2nd March 2005

Parent's Signature : _____

Section A : (30 marks)

Read each question carefully. Choose the most suitable answer and write its number 1, 2, 3 or 4 in the brackets provided.

1. All living things need _____ to stay alive.

- A. air
- B. food
- C. water

- (1) A only
- (2) A and B only
- (3) B and C only
- (4) A, B and C

()

2. Which one of the following is grouped correctly?

	Once Alive	Never Alive
(1)	computer	wind
(2)	traffic lights	clouds
(3)	cotton wool	newspaper
(4)	silk handkerchief	plastic raincoat

()

3. Jenny planted a green bean. She then recorded the height of the green bean plant over a few days in the table as shown below.

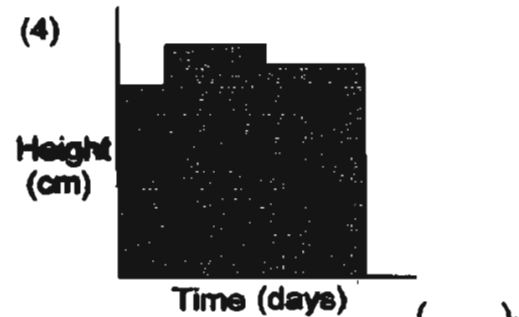
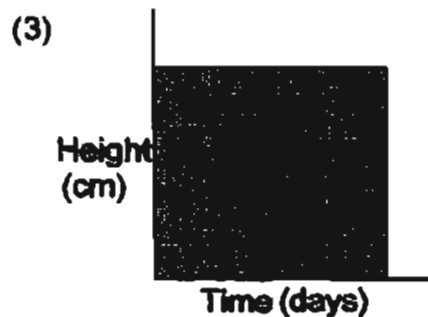
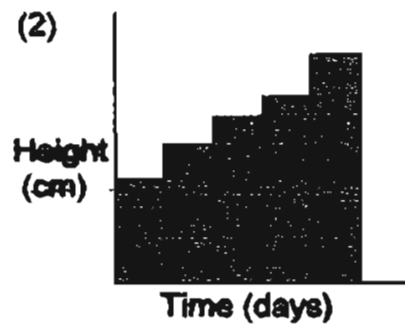
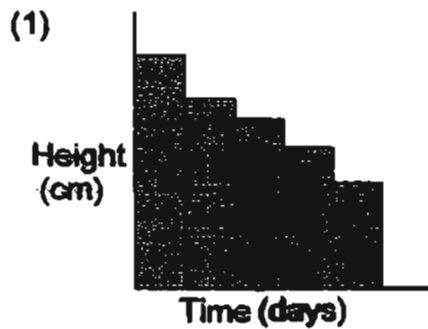
Day	1	2	3	4
Height (cm)	3	5	8	11

From the table above, we can conclude that the green bean plant _____.

- (1) grows
- (2) reproduces
- (3) moves by itself
- (4) responds to changes

()

4. Which one of the following graphs below shows correctly how the height of a Barbie doll changes with time?



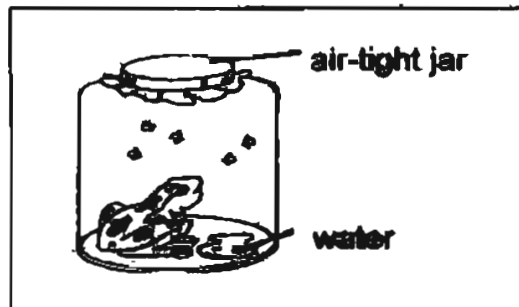
()

5. Mary said, "The coffee in this cup is too sweet!"
Which sense organ did Mary use?
She used her _____.

- (1) skin
- (2) eyes
- (3) nose
- (4) tongue

()

6. Sandra put a frog in an air-tight glass jar. Two days later, she noticed that the frog had died.



What has caused the frog to die?

- (1) There was too much light.
- (2) There was not enough air.
- (3) There was too much water.
- (4) There was not enough food.

()

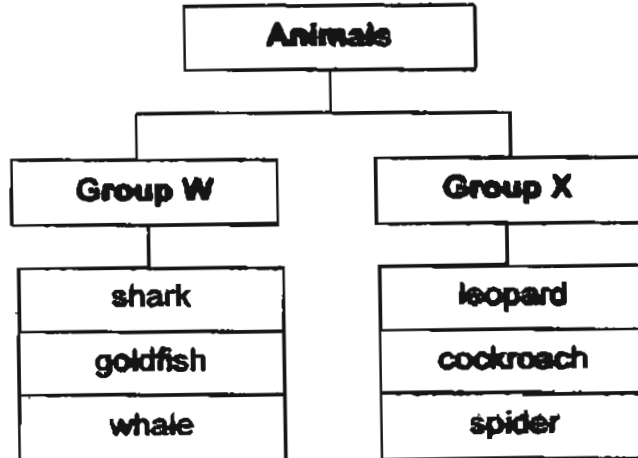
7. Which one of the following statements is true about living things responding to a change in the surroundings?

- (1) A frog laying eggs.
- (2) A caterpillar growing into a butterfly.
- (3) A monkey swinging from tree to tree.
- (4) A millipede coiling itself when it is touched.

()

W

8. The classification diagram below shows how some animals are grouped.



Which one of the following sets of heading best describes W and X?

	W	X
(1)	Fishes	Insects
(2)	Live in water	Live on land
(3)	Covered with scales	Covered with hairs
(4)	Give birth to young alive	Lay eggs

()

9. Which one of the following statements about micro-organisms is incorrect?

- (1) They can reproduce.
- (2) We can see them with our naked eyes.
- (3) Some micro-organisms are harmful to us.
- (4) They can be found on plants and animals.

()

10. Janice saw Plant X. These are her descriptions of the plant :
It lives in water. It bears flower.
Which one of the following could Janice have seen?

- (1) Lotus
- (2) Orchid
- (3) Hibiscus
- (4) Morning Glory

()

↳

11. The table below shows the characteristics of 4 animals, L, M, N and O.

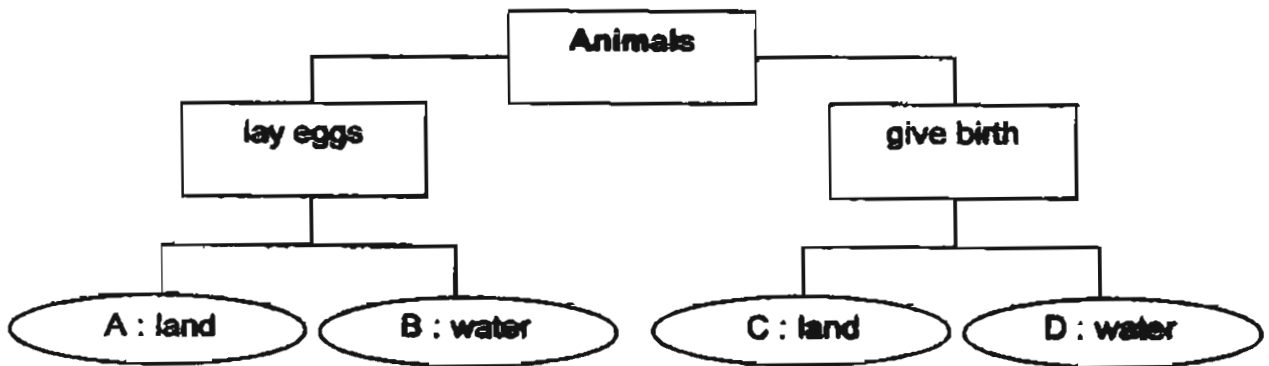
Animal	Number of legs				Feelers	Wings
	2	4	6	8		
L	✓				x	✓
M		✓			x	x
N			✓		✓	✓
O				✓	x	x

Which animal is an insect?

- (1) Animal L
- (2) Animal M
- (3) Animal N
- (4) Animal O

()

12. Look at the classification diagram below.



Where should the word "platypus" be placed?

- (1) A
- (2) B
- (3) C
- (4) D

()

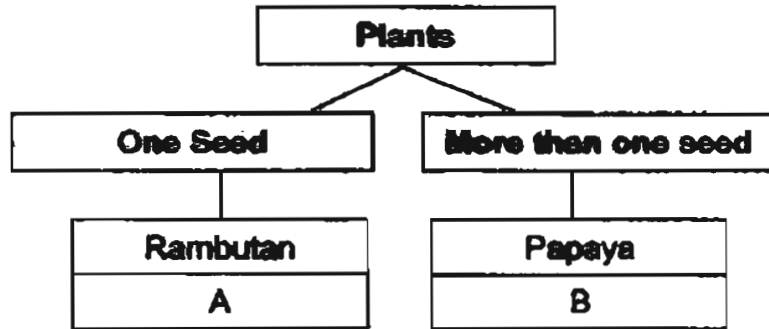
13. A spider is not an insect because _____.

- A. it has no wings
- B. it has eight legs
- C. It reproduces by laying eggs

- (1) A only
- (2) B only
- (3) A and B only
- (4) B and C only

()

14. Look at the classification diagram below.

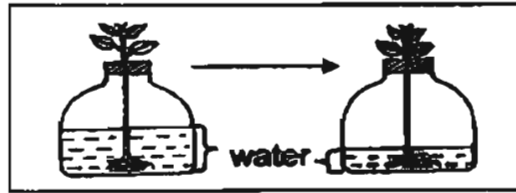


What can A and B be?

	A	B
(1)	Mango	Kiwi
(2)	Apple	Durian
(3)	Longan	Lychee
(4)	Watermelon	Banana

()

15. Look at the set-ups below.



What can we conclude from the experiment?

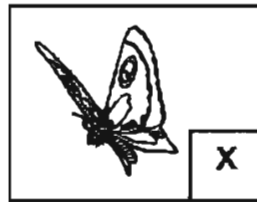
- (1) Water in the bottle dries up.
- (2) Water leaks from the bottle.
- (3) Plants need sunlight to grow.
- (4) Plants need water to stay alive.

()

Section B : (20 marks)

Write your answers in the space provided.

16. Name the young of these animals.



a) X : _____ (½m)

b) Y : _____ (½m)

c) Which group of animals does X and Y belong to? (1m)



17. Four different plants are grown under different conditions as shown below.

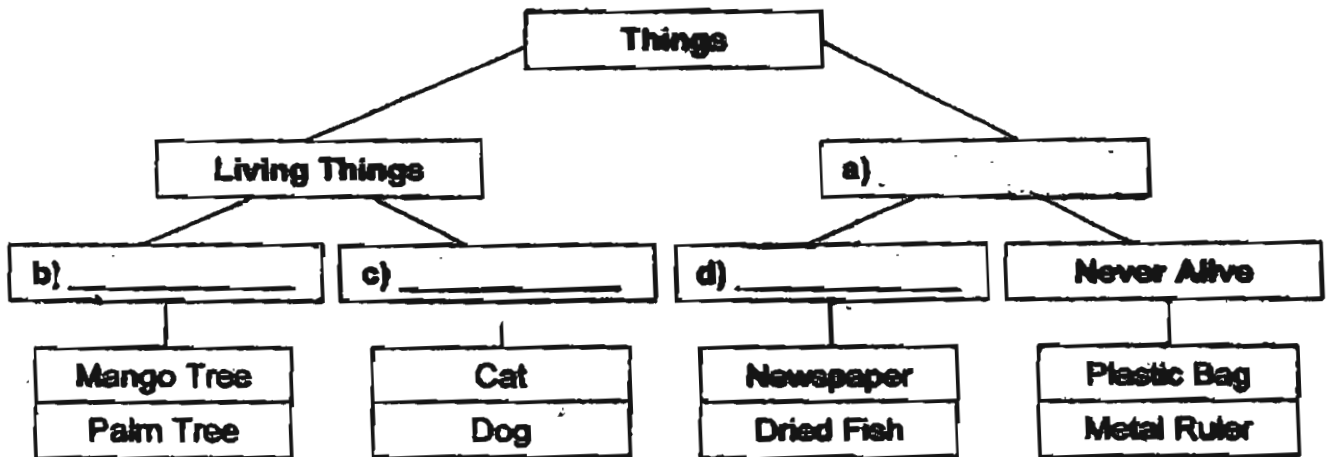
Plants	Conditions		
A	Air	Water	No sunlight
B	Air	No water	Sunlight
C	No air	Water	Sunlight
D	Air	Water	Sunlight

a) Which plant will most likely die first? (1m)

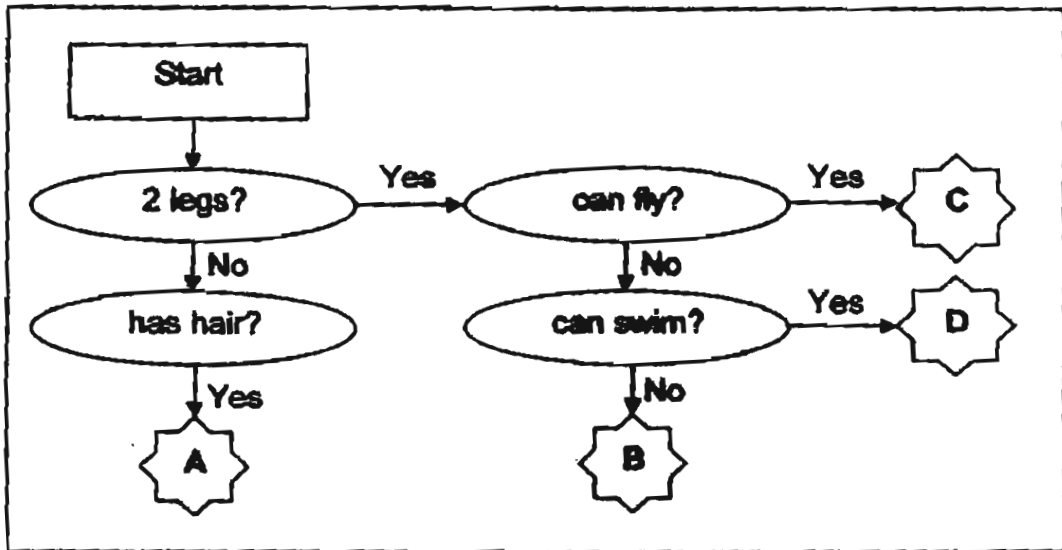
b) Which plant will survive the longest? (1m)

c) What can we conclude from the above experiment? (1m)

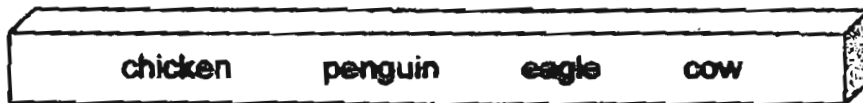
18. Complete the classification table below by filling in the blanks for (a), (b), (c) and (d). (2m)



19. Study the flow chart carefully.



Put the animals given below under the letter where they belong. (2m)



A	B	C	D

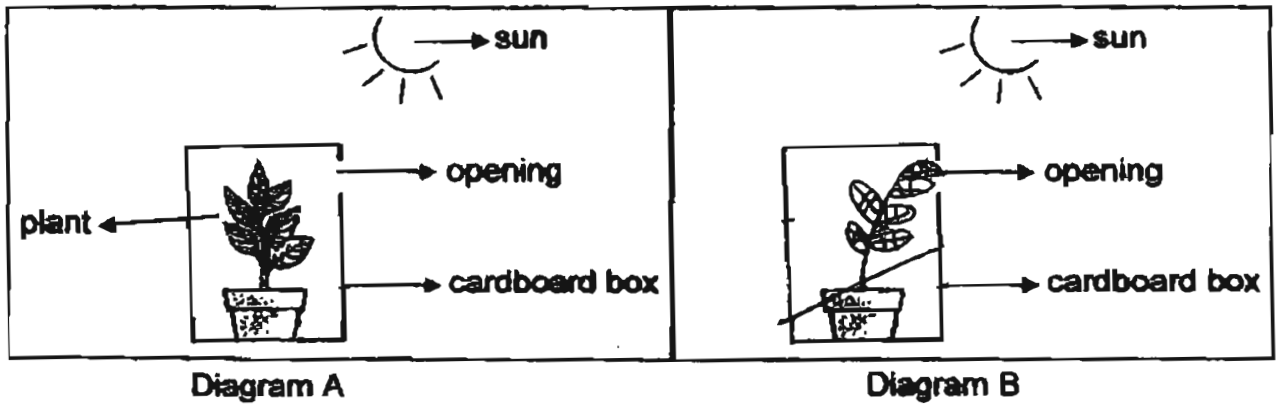
20. a) How do fungi, like mushroom, reproduce? (1m)

b) What is the main difference between fungi and plants? (1m)

c) An example of a harmful fungus is (1m)

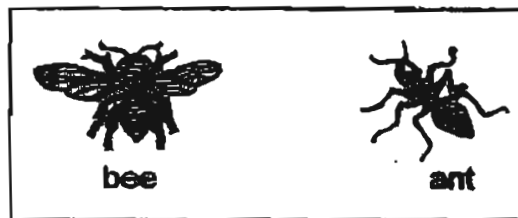
21. Lily set up a plant in a box with a small opening like the one shown in Diagram A below.

a) In the space in Diagram B, draw how the plant would look like after a week. (1m)



b) The experiment above shows that plants grow towards _____ (1m)

22. Based on what you see in the pictures, compare the 2 animals below. (Do not compare their sizes and shapes)



a) State 1 similarity between the 2 animals above. (1m)

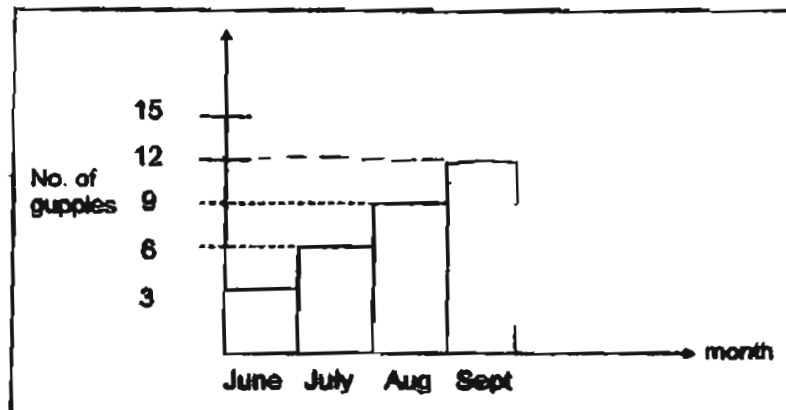
b) State 1 difference between the 2 animals above. (1m)

23. Some living things have young that look like them while some do not. Place the four animals given in the box below under the correct headings. (2m)



Young which look like their parents	Young which do not look like their parents

24. Bala was studying the guppies he kept in a fish tank. He drew the bar graph as shown below to show the number of guppies found in the tank from June to August.



- a) Assuming that there was an equal increase in the number of guppies every month, draw the bar for the month of September. (1m)
- b) The graph above concludes that living things can _____ (1m)

End of Paper
Have you checked your work?

CA1

Methodist Girls Primary School
Primary 3 Science CA1 Exams (2005)

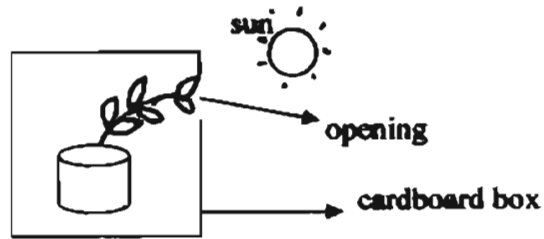
Answer Sheet

Answer Sheets

Q1	Q2	Q3	Q4	Q5
4	4	1	3	4
Q6	Q7	Q8	Q9	Q10
2	4	2	2	1
Q11	Q12	Q13	Q14	Q15
3		2	1	4

- 16a. Caterpillar
16b. Nymph
16c. They belong to the group of insects.
- 17a. Plant C will most likely to die first.
17b. Plant D will survive the longest.
17c. All plants need air, sunlight to make their own food.
- 18a. Non-living thing
18b. Plants
18c. Animals
18d. Once alive
- 19a. cow
19b. chicken
19c. eagle
19d. penguin
- 20a. They reproduce by spores.
20b. Fungi cannot make their own food but plants can.
20c. Toadstool

21a.



21b.

sunlight

22a.

Both have legs and feelers.

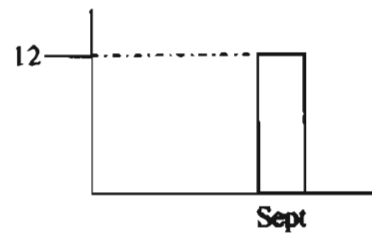
22b.

The bee has a pair of wings but the ant does not.

23.

dog	toad
bear	mosquito

24a.



24b.

Reproduce.