



ANGLO-CHINESE SCHOOL (JUNIOR)



CONTINUAL ASSESSMENT 1 (2015) PRIMARY 3

SCIENCE

BOOKLET A

Thursday

5 March 2015

1 HOUR

Name : _____ ()

Class : P3 _____

INSTRUCTIONS TO PUPILS

DO NOT TURN OVER THE PAGES UNTIL YOU ARE TOLD TO DO SO

Follow all instructions carefully.

There are 15 questions in this booklet.

Answer **ALL** questions.

INFORMATION FOR PUPILS

The total marks for this booklet is 30.

The total time for Booklets A and B is 1 hour.

This question paper consists of 7 printed pages (inclusive of cover page).

Booklet A (30 marks)

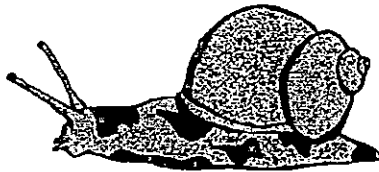
For each question from 1 to 15, four options are given. One of them is the correct answer. Make your choice (1, 2, 3 or 4). Shade your answer on the Optical Answer Sheet. (15 x 2 marks)

1. Look at the classification table below.

Things		
Group 1	Group 2	Group 3
float	table-tennis bat	net
goggles	ping pong ball	racket
swimming trunks	net	shuttlecock

The things in the table are classified according to their _____.

- (1) uses
 - (2) sizes
 - (3) shapes
 - (4) colours
2. Ryan watched a snail in his garden. He touched it gently and observed that the snail moved into its shell immediately.



Garden snail

Which of the following characteristic of living things did the snail display?

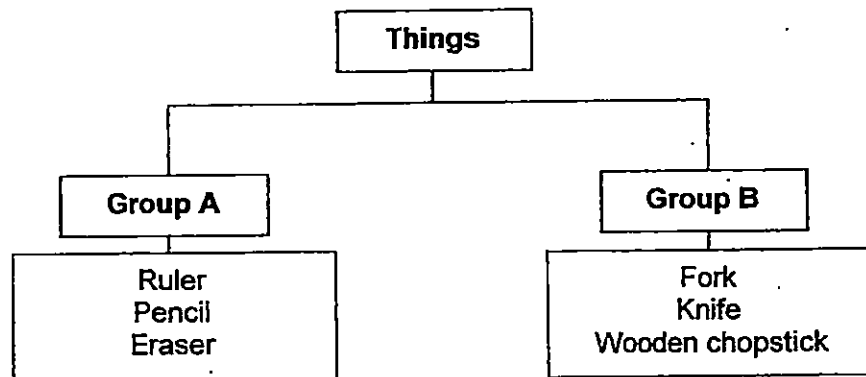
- (1) Living things die.
 - (2) Living things can move from place to place.
 - (3) Living things respond to changes around them.
 - (4) Living things need air, food and water to survive.
3. Which of the following is not a characteristic of all living things?
- (1) They grow.
 - (2) They respond to changes around them.
 - (3) They need air, food and water to survive.
 - (4) They depend on other living things for food.

4. An ambulance can move and sound the siren.
But the ambulance is not a living thing because it cannot _____.

- A grow
B reproduce
C move from place to place

- (1) C only
(2) A and B only
(3) B and C only
(4) A, B and C

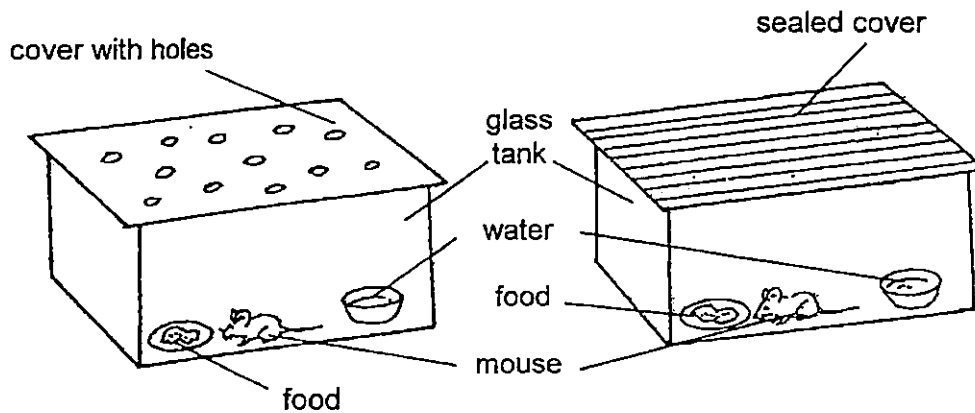
5. The classification diagram below shows how two different sets of things are grouped.



Which of the following can be placed in Group A?

- (1) Cup
(2) Spoon
(3) Broom
(4) Highlighter
6. Which of the following is not a living thing?
- (1) Grass
(2) Cloud
(3) Tadpole
(4) Mushroom

7. Alisha conducted the following experiment.



Based on the experiment above, she wanted to find out if the mouse needs _____ to survive.

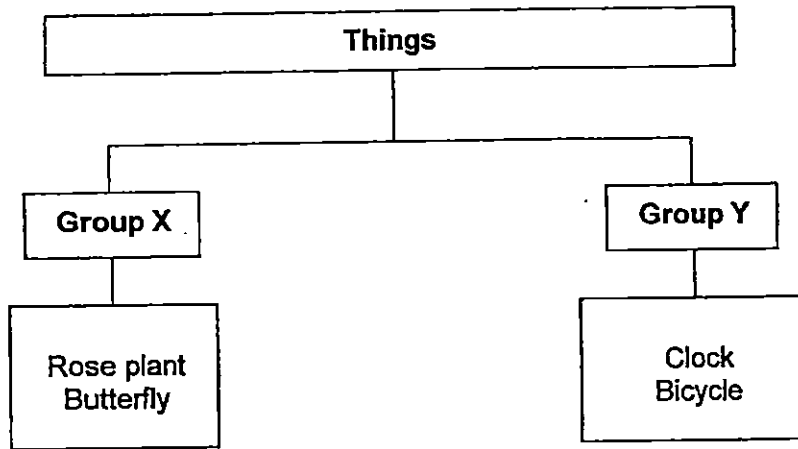
- (1) air
 - (2) food
 - (3) water
 - (4) sunlight
8. Study the classification table below.

Food items			
Salty	Sweet	Bitter	Sour
Potato chips	Honey	Chilli	Lemon
French fries	Watermelon	Bittergourd	Green apple

Which one of the following food items have been classified wrongly?

- (1) Chilli
 - (2) Honey
 - (3) French fries
 - (4) Green apple
9. Which of the following statements shows growth in a person?
- (1) Ali covers his ears when he hears the thunder.
 - (2) Ali buys a plate of chicken rice as he is feeling hungry.
 - (3) Ali has a new baby sister as his mother had just given birth.
 - (4) Ali needs a new pair of pants as the one he has is too short.

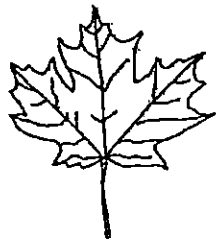
10. Look at the classification chart below.



What are suitable headings for Group X and Group Y?

	Group X	Group Y
(1)	Can reproduce	Cannot reproduce
(2)	Can make food	Cannot make food
(3)	Does not need air, food and water	Needs air, food and water
(4)	Can move freely from place to place	Cannot move freely from place to place

11. Study the pictures of leaves A and B shown below.



Leaf A



Leaf B

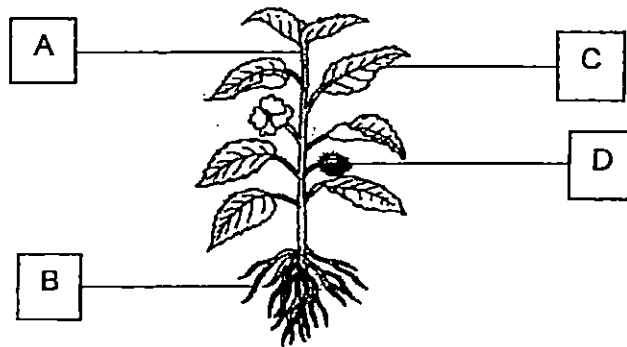
What is the similarity between Leaf A and Leaf B?

- (1) Both of them are water plants.
- (2) Both of them have jagged edges.
- (3) Both of them have colourful leaves.
- (4) Both of them have the same length of leaf stalk.

12. Which of the following is true of all plants?

- (1) All plants can produce fruits.
- (2) All plants make their own food.
- (3) All plants have roots, stems and flowers.
- (4) All plants have only green coloured leaves.

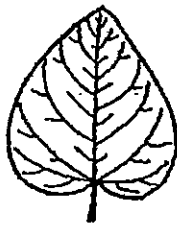
13. Study the parts of the plant A, B, C and D, shown below.



Identify the part of the plant that is only present in a flowering plant.

- (1) A
- (2) B
- (3) C
- (4) D

14. The following leaves have been classified into 2 groups as shown below.



Leaf A

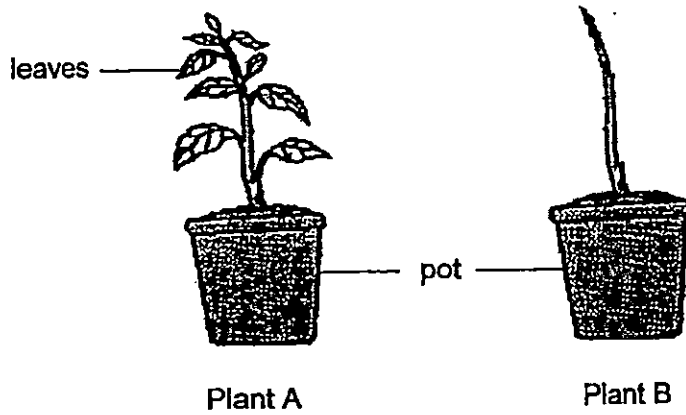


Leaf B

Which of the following best describes the shape of each leaf?

	Leaf A	Leaf B
(1)	oval	round
(2)	palm	heart
(3)	heart	oval
(4)	round	palm

15. Mr Chen bought 2 pots of similar plants of the same size. Plant B had its leaves removed as shown below. He left them in his balcony where it was airy and had sunlight. He watered them daily.



After a few days, Plant B withered while Plant A was growing well. This shows that plants need _____.

- (1) air to live
- (2) sunlight to grow
- (3) water to survive
- (4) leaves to make food

End of Booklet A

ANGLO-CHINESE SCHOOL
(JUNIOR)



CONTINUAL ASSESSMENT 1 (2015)
PRIMARY 3

SCIENCE

BOOKLET B

Thursday

5 March 2015

1 HOUR

Name : _____ ()

Class : P3 _____

INSTRUCTIONS TO PUPILS

DO NOT TURN OVER THE PAGES UNTIL YOU ARE TOLD TO DO SO

Follow all instructions carefully.

There are 7 questions in this booklet.

Answer **ALL** questions.

INFORMATION FOR PUPILS

The number of marks is given in brackets [] at the end of each question or part question.

The total marks for this booklet is 20.

The total time for Booklets A and B is 1 hour.

This question paper consists of 8 printed pages (inclusive of cover page).

BOOKLET A	/ 30
BOOKLET B	/ 20
TOTAL	/ 50
Parent's signature/ Date:	





Booklet B (20 marks)

For questions 16 to 22, write your answers in this booklet.

The number of marks available is shown in brackets [] at the end of each question or part question.





16. Place a cross (X) in the box above the thing that does not belong to each group. Give a reason why it is different from the rest.

(a)

<input style="width: 60px; height: 25px;" type="checkbox"/>	<input style="width: 60px; height: 25px;" type="checkbox"/>	<input style="width: 60px; height: 25px;" type="checkbox"/>	<input style="width: 60px; height: 25px;" type="checkbox"/>	[1]
				
Sparrow	Orchid	Envelope	Mushroom	

Reason: _____

(b)

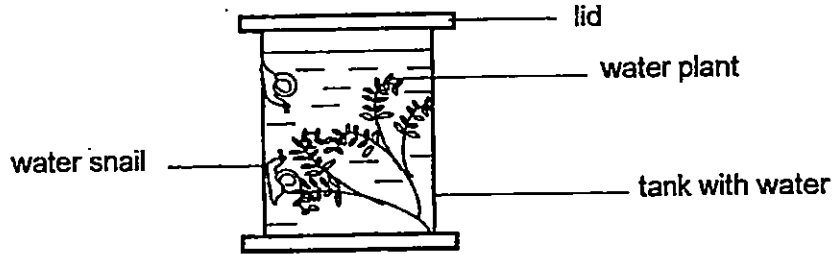
<input style="width: 60px; height: 25px;" type="checkbox"/>	<input style="width: 60px; height: 25px;" type="checkbox"/>	<input style="width: 60px; height: 25px;" type="checkbox"/>	<input style="width: 60px; height: 25px;" type="checkbox"/>	[1]
				
Apple	Papaya	Rambutan	Watermelon	

Reason: _____

(Go on to the next page)

SCORE	2
-------	---

17. Raj wanted to bring his water snails to school to show his classmates. He placed the water snails in a tank together with some water plants and closed the lid tightly in order to prevent the water snails from escaping. After a few hours, Raj found that the water snails had died in the tank.



- (a) Why were the water snails able to survive before Raj closed the lid tightly? [1]

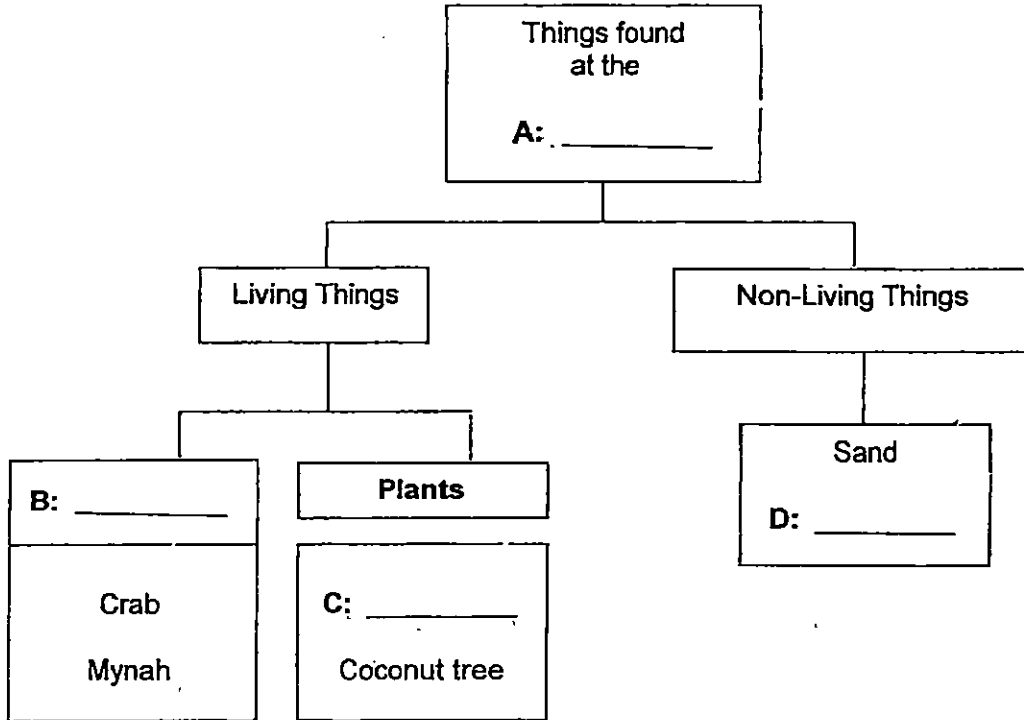
- (b) Why did the water snails die after he closed the lid tightly? [1]

- (c) State one thing Raj could have done to keep the water snails alive and also prevent them from escaping. [1]

SCORE	3
-------	---

18. Samad classified some things in the classification table below.

Beach	Shell	Animals	Playground	Algae
-------	-------	---------	------------	-------

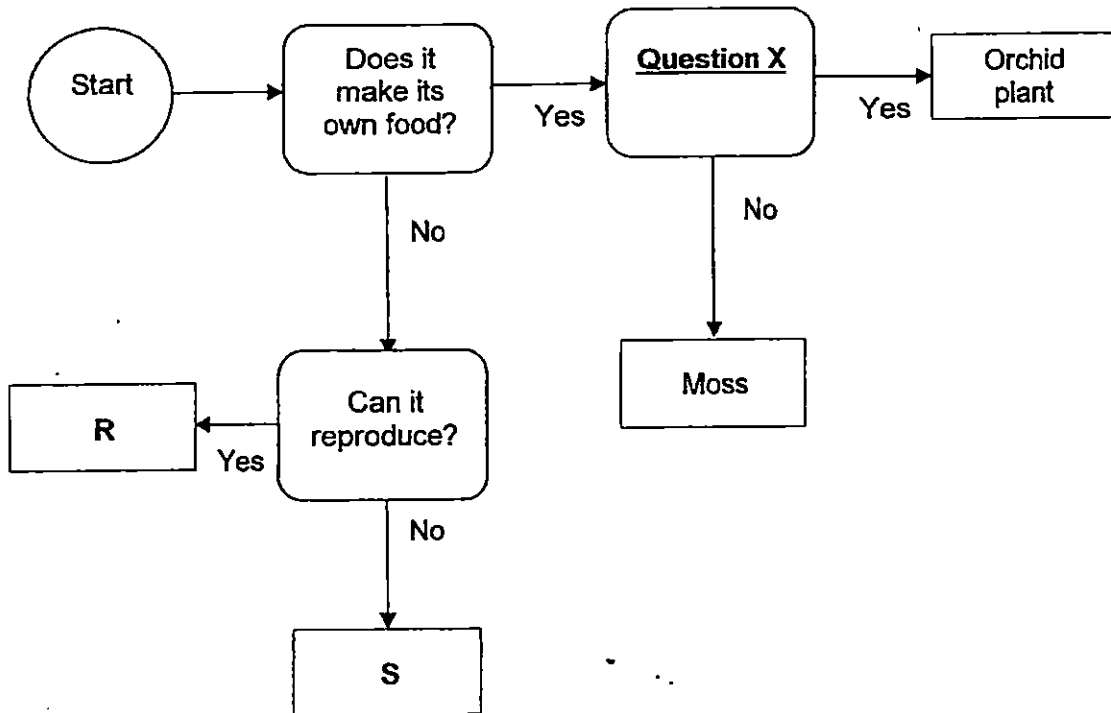


(a) Fill in the blanks A, B, C and D in the classification chart with the most suitable words provided in the box above. [2]

(b) State a characteristic of living things that both the crab and mynah have that is similar. [1]

SCORE	3
-------	---

19. Study the flow chart below which shows the characteristics of some things.



(a) Based on the flow chart, state a similarity between R and S. [1]

(b) What is the most suitable question to represent Question X in the flow chart above? [1]

(c) Based on the flowchart, what could R and S be? Put a tick [✓] in the correct box. [1]

Thing	R	S
Water		
Eagle		

SCORE	3
-------	---

20. Ben planted a seed and observed it over 6 weeks. The seed grew into a plant, he measured and recorded its height over six weeks as shown below.

Week	Height (cm)
1	3
2	6
3	10
4	14
5	?
6	25

- (a) Which characteristic of living things does the plant show? [1]

- (b) Based on the results in the table, what would be the likely height of the plant in Week 5? [1]

The height of the plant in Week 5 would be _____ cm.

- (c) In Week 8, another identical young plant was observed to be growing beside Ben's plant. Other than growth, state the characteristic of living things shown here. [1]

SCORE	3
-------	---

21. Look at the two plants which are living things.



Mango Tree



Bird's Nest Fern

(a) Apart from the characteristics stated here, state another similarity and another difference between the Mango Tree and Bird's Nest Fern. [2]

Similarity: _____

Difference: _____

(b)

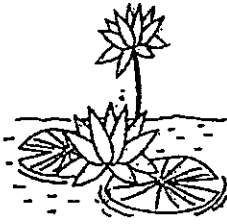


grass

Does the grass above grow in the same way as the Mango Tree or the Bird's Nest Fern? Why? [1]

SCORE	
	3

22. Study the pictures of 3 different types of flowers A, B and C.



Flower A
Lily



Flower B
Hydrangea



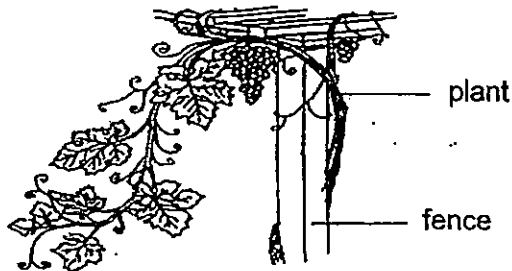
Flower C
Rose

(a) Apart from being different types of flowers, state another difference between the flowers. [2]

(i) Flower A and C:

(ii) Flower B and C:

(b) Unlike flowers A, B and C, some plants grow on other plants, on walls and fences like the one shown below.



Give a reason why these plants cannot stand upright by themselves. [1]

End of Paper

SCORE	3
-------	---



EXAM PAPER 2015

LEVEL : PRIMARY 3

SCHOOL : ANGLO CHINESE SCHOOL (JUNIOR)

SUBJECT : SCIENCE

TERM : CA1

Q 1	Q 2	Q 3	Q 4	Q 5	Q 6	Q 7	Q 8	Q 9	Q 10
1	3	4	2	4	2	1	1	4	1
Q 11	Q 12	Q 13	Q 14	Q 15					
2	2	4	3	4					

Q16a. Envelope - Reason : Sparrow, orchid and mushroom are living things but the envelope is a non – living thing.

Q16b. Rambutan – Reason : Apple, papaya and watermelon have a smooth surface but the rambutan has a hairy surface.

Q17a. The water snails are able to survive before Raj closed the lid tightly as they had air, food and water.

Q17b. There was no air after Raj closed the lid tightly.

Q17c. Raj should put a net to keep the water snails alive and also prevent them from escaping.

Q18a. A: Beach B: Animals C: Algae D: Shell

Q18b. They need air, water and food to survive.

Q19a. Both of them does not make its own food.

Q19b. Is it a flowering plant. Q19c. Water – S Eagle – R

Q20a. Plants can grow. Q20b. 19cm Q20c. Living things reproduce.

Q21a. Similarity : They can grow.

Q21a. Difference : Mango tree is a flowering plant but bird's nest fern is a non – flowering plant.

Q21b. It grows the same way as the mango tree as it is a flowering plant.

Q22a. (i) Flower A is an aquatic plant but flower C grows on land.

Q22a. (ii) Flower B grows in a cluster but Flower C grows singly.

Q22b. The stem is weak.