



AI TONG SCHOOL

SA1

2004 SEMESTRAL ASSESSMENT 1

PRIMARY 3 SCIENCE

DURATION: 1 h 30 min

DATE: 18TH MAY 2004

INSTRUCTIONS

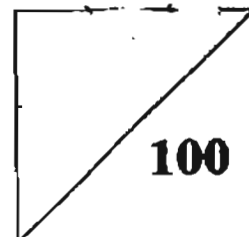
Do not open the booklet until you are told to do so.

Follow all the instructions.

Answer all the questions.

Name: _____ ()

Marks:



Class: Primary 3 _____

Parent's Signature: _____

Date: _____

Section A (60 marks)

Choose the correct answer and shade its number in the Optical Answer Sheet (OAS) provided.

(2 marks each)

1. Which of the following is a characteristic of all living things?

- ~~(1)~~ Reproduce by giving birth to young alive.
- ~~(2)~~ Move around from place to place freely.
- ~~(3)~~ Need sunlight, air and water to survive.
- ~~(4)~~ Respond to changes around them.

2. Which of the following animals has the same kind of outer body covering as the spiny anteater?

- ~~(1)~~ Duck
- ~~(2)~~ Dog
- ~~(3)~~ Crocodile
- ~~(4)~~ Starfish

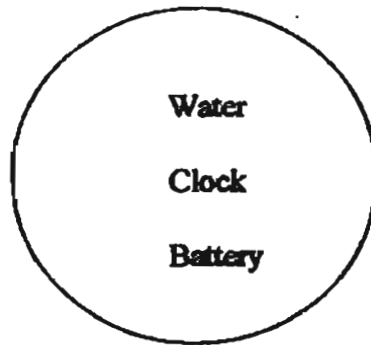
3. Which of the following is a living thing?

- ~~(1)~~ Seed
- ~~(2)~~ Battery
- ~~(3)~~ Paper
- ~~(4)~~ Water

4. The main reason why the outer body covering of animals is important is because it helps them to _____.

- ~~(1)~~ fly
- ~~(2)~~ attract hunters
- ~~(3)~~ protect their bodies
- ~~(4)~~ swim effortlessly in water

5.



Which one of the following pairs belongs to the above group?

- ~~(1)~~ Water Lily and Dragonfly
- ~~(2)~~ Boy and Train
- ~~(3)~~ Candle and Matchstick
- (4) Fish and Bowl

6. All the things in one of the following groups will die if there is no air. Which group is it?

- ~~(1)~~ Camel, Palm Tree and Water
- ~~(2)~~ Watch, Radio and Humans
- ~~(3)~~ Magpie, Mimosa and Giraffe
- (4) Mouse, Monkey and Shoes

7. A robotic toy dog can wag its tail and bark when its head is patted. It can sit, run and lie down too. Why isn't it a living thing?

- A. It cannot grow.
- B. It cannot move.
- C. It cannot reproduce.
- D. It cannot respond to stimulus.

- (1) A only
- ~~(2)~~ C only
- ~~(3)~~ B and D
- ~~(4)~~ A and C

8. It can fly. Its body is not covered with feathers. It lays eggs. Which animal do the above statements describe?

- (1) Bat
- (2) Penguin
- (3) Pigeon
- (4) Housefly

9. Daniel found an animal in his garden. He said that it is an insect based on the following statements. Which observation does not show that it is an insect?

- (1) It has three body parts.
- (2) It has six legs.
- (3) It has two pairs of wings joined to the thorax.
- (4) It lays eggs on a leaf.

10. Birds have feathers as their outer body coverings. Besides helping the birds to fly, the feathers _____.

- (1) make them strong
- (2) keep them cool
- (3) keep them warm
- (4) attract hunters to them

11. A lizard will drop its tail when it is _____.

- (1) time to grow a new one
- (2) sick
- (3) in danger
- (4) too long

12. Which one of the following statements of a bat is correct?

- (1) A bat can lay eggs.
- (2) A bat sleeps at night and hunts for food in the morning.
- (3) A bat is a mammal that can fly.
- (4) A bat is a bird.

13. Which one of the following animals does not hatch from an egg?

- (1) Duck
- (2) Lizard
- (3) Mosquito
- (4) Squirrel

14. The _____ of the fish help it to move about in water.

- (1) mouth and gills
- (2) scales and gills
- (3) fins and tail
- (4) scales and tail

15.



Which type of outer covering does this animal have?

- (1) Hair
- (2) Feathers
- (3) Scales
- (4) Shells

16. A frog can hide itself from its enemies because _____.

- (1) it has a beautiful and attractive body colour
- (2) it has a long flicking tongue
- (3) it eats insects
- (4) its body colour is similar to its surroundings

17. Study the two groups of animals below carefully.

Group A
Bat
Monkey
Zebra

Group B
Sea Urchin
Octopus
Seahorse

Which pair of animals can be placed in Group A and B respectively?

	<u>Group A</u>	<u>Group B</u>
(1)	Shark	Frog
(2)	Giraffe	Elephant
(3)	Starfish	Seaweed
(4)	Emu	Salmon

18. A shark can stay underwater for a long time but a whale cannot. This is because a shark _____.

~~(1)~~ has scales to protect its body
~~(2)~~ can find its food in the water
~~(3)~~ can swim away from its enemies
~~(4)~~ has gills to breathe in water

19. Which part of the plant does a fruit come from?
A fruit comes from the _____.

~~(1)~~ stem
~~(2)~~ flower
~~(3)~~ leaf
~~(4)~~ root

20. Examples of non-flowering plants are _____.

~~(1)~~ yeast and puff balls
~~(2)~~ balsams and roses
~~(3)~~ ferns and moss
~~(4)~~ moulds and mushrooms

21. The _____ is the part of a plant that supports the branches and leaves.

- (1) root
- (2) leaf stalk
- (3) leaf
- (4) stem

22. The tall, thick and woody stem of a tree has an outer covering called the _____.

- (1) trunk
- (2) skin
- (3) bark
- (4) branch

23. _____ cannot stand upright. They use other plants, walls and fences for support or they just creep on the ground.

- (1) Trees
- (2) Shrubs
- (3) Short bushy plants with thick stems
- (4) Plants with weak stems

24.

Roses Hibiscus Frangipani

Which one of the following pairs of plants belongs to the above group?

- (1) Hydrilla and Bird's Nest Fern
- (2) Stag Horn's Fern and Maidenhair Fern
- (3) Morning Glory and Periwinkle
- (4) Moss and Moulds

25. Which one of the fruit below is different from the other three?

- (1) Longan fruit
- (2) Rambutan fruit
- (3) Durian fruit
- (4) Mango fruit

26. Which one of the statements about the bird's nest fern is true?

- (1) It does not produce flowers.
- (2) It lives in the sea.
- (3) It does not have chlorophyll.
- (4) It depends on another plant for food.

27. Moulds reproduce by _____.

- (1) spores
- (2) pollen
- (3) seeds
- (4) gills

28.

X	Y
Mushrooms	Moss
Mould	Duckweed
Jew's ears	Cucumber

What could X and Y be?

- | X | Y |
|--|-----------------------|
| <input checked="" type="checkbox"/> (1) Flowering Plants | Non-flowering Plants |
| <input checked="" type="checkbox"/> (2) Land Plants | Water Plants |
| <input checked="" type="checkbox"/> (3) Spore Producing Plants | Seed Producing Plants |
| <input checked="" type="checkbox"/> (4) Fungi | Plants |

29. Which one of the objects is made of 2 different materials?

- (1) A string
- (2) A metal button
- (3) A wooden pencil
- (4) A piece of paper

30. Materials come from different sources. Which material is correctly matched with its source?

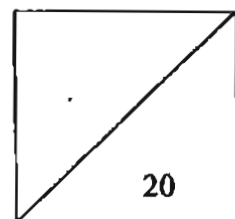
	Material	Where it comes from
<input checked="" type="checkbox"/> (1)	silk	plants
<input checked="" type="checkbox"/> (2)	leather	plants
<input checked="" type="checkbox"/> (3)	cotton	animals
<input checked="" type="checkbox"/> (4)	wool	animals

Section B (20 marks)

Choose the correct words from the box below and write them in the blanks provided. You may use the words more than once.

closes	scales	Magpie	skin	air
micro-organisms		penguin	flowers	leaves
sunlight		clusters	bee	float
chlorophyll		flowering	non-flowering	water

31. There are _____ on the outer body covering of a lizard.
32. A _____ is a bird that lays eggs but cannot fly.
33. The body of a _____ is divided into three parts.
34. The _____ of a mimosa plant close when you touch it.
35. Animals die in minutes if they have no _____.
36. Water lily and roses are _____ plants.
37. Plants have _____ and so, can make their own food.
38. The ixora and the frangipani have flowers that grow in _____.
39. We cannot see _____ ¹⁰⁶ without a microscope because they are tiny living things.
40. Objects that are light can _____ on ~~water~~.



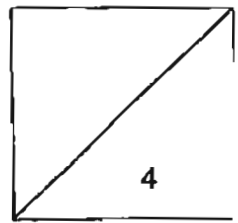
Section C (20 marks)

41. Complete the table below by putting these things in the correct groups.
(4 marks)

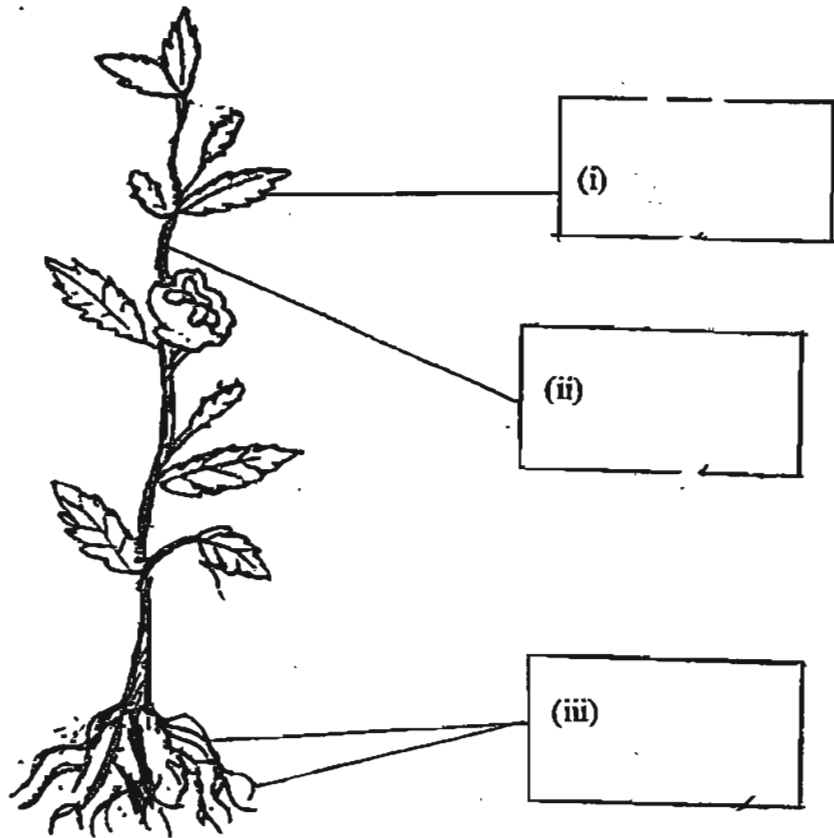
rain	apple juice	wooden ruler	clouds
zebra	tree	comb	boy

Living Things	Non-Living Things

24
108



42. The drawing shows a balsam plant.



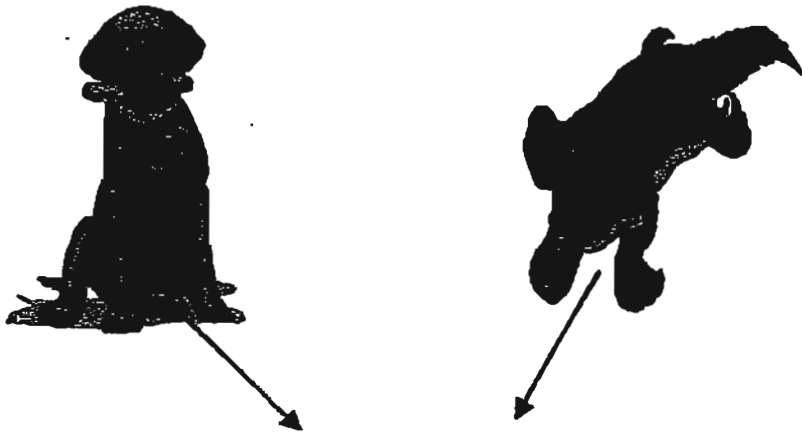
a) Write the parts of the plant in the boxes. (3 marks)

b) Write down two uses of plants. (2 marks)

i) _____

ii) _____

43. Study the two animals shown below carefully. Then answer the questions that follow.



(a) How are their outer body coverings similar? (1 mark)

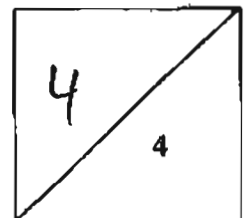
(b) How are they different in the way they reproduce? (2 marks)

Dog

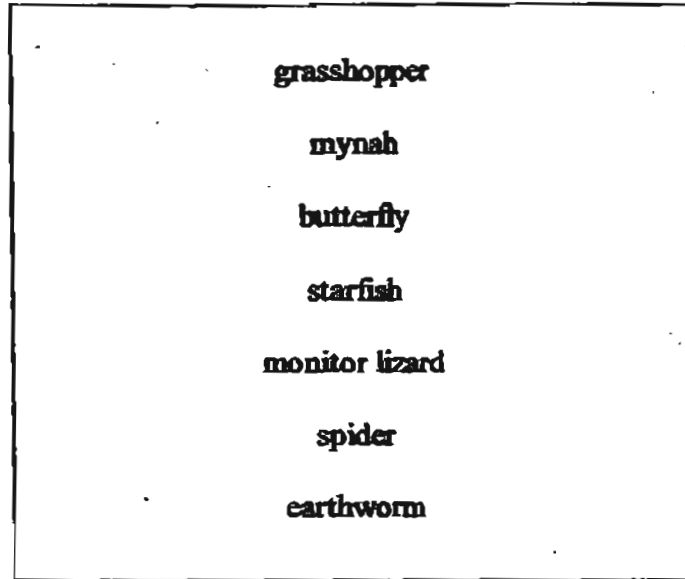
Platypus

(c) Name another animal which has the same outer body covering as the dog and the platypus. (1 mark)

26



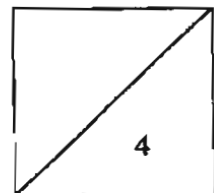
44. A list of animals is shown below. Mariam claimed she saw the animals in the school garden.



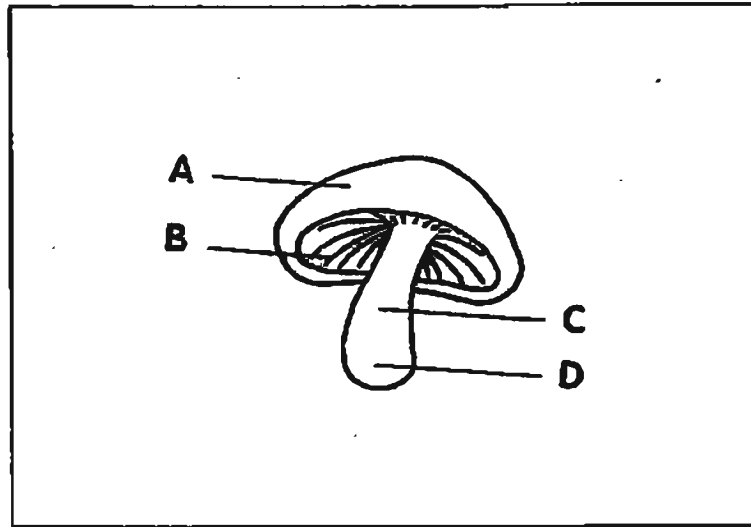
- a) Which animal has Mariam most likely named wrongly?
(1 mark)

- b) Explain your answer. (2 marks)

- c) Name another animal that has no legs and lives in the garden.
(1 mark)



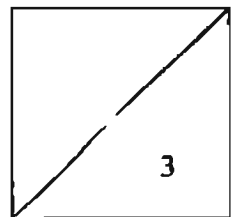
45.



(a) In which part of the mushroom, A, B, C or D are the gills? (1 mark)

(b) What are found in the gills of the mushroom? (1 mark)

(c) Why are they important to the mushroom? (1 mark)



28

