

ANGLO - CHINESE SCHOOL (JUNIOR)

SEMESTRAL ASSESSMENT 1 - 2004

SCIENCE

PRIMARY THREE

SM

BOOKLET A

Name: _____ ()

Class: PRIMARY 3 ()

Date : Thursday 13th May 2004

30 Questions

60 marks

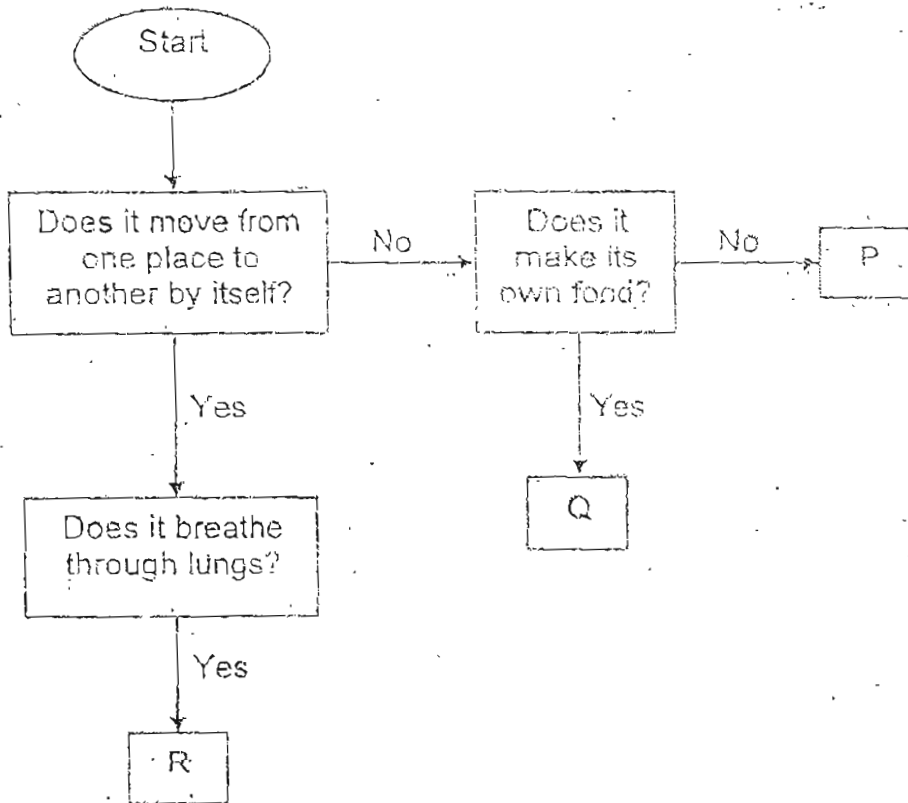
Total time for Booklets A and B : 1 hour and 30 minutes

**DO NOT OPEN THIS BOOKLET UNTIL YOU ARE TOLD TO DO SO.
FOLLOW ALL INSTRUCTIONS CAREFULLY.
ANSWER ALL QUESTIONS.**

Section A (30 x 2 m each)

For each question from 1 to 30, four options are given. One of them is the correct answer. Choose the correct option (1, 2, 3 or 4) and shade the correct oval on the Optical Answer Sheet (OAS).

1. Study the flow chart below.



Which of the following represent P and R?

	P	R
(1)	balsam	rabbit
(2)	balsam	goldfish
(3)	mushroom	rabbit
(4)	mushroom	goldfish

2. Study the data below. It shows the length of a baby over time.

Age in months	Length in cm
3	50 cm
6	52 cm
9	54 cm
12	57 cm

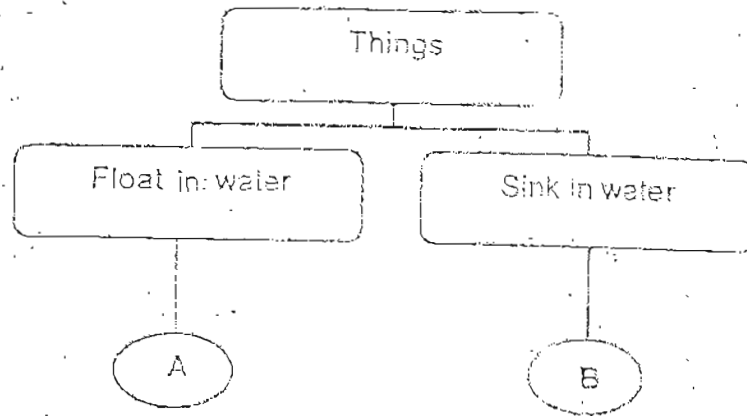
What can you conclude from the data above?

- (1) Living things grow.
- (2) Living things respond to changes.
- (3) Living things move by themselves.
- (4) Living things need air, food and water to live.

3. Study the table below. Which one of the following groups is INCORRECT?

(1)	hydrilla	squirrel	rose	ant
(2)	pencil	radio	shoe	table
(3)	hamster	coil	mimosa	spider
(4)	calculator	spoon	handkerchief	hat

4. Study the classification table below.



What could A and B possibly be?

	A	B
(1)	ice	cork
(2)	coin	rock
(3)	coin	cork
(4)	ice	rock

5. Which one of the animals breathes in a different way from the others?

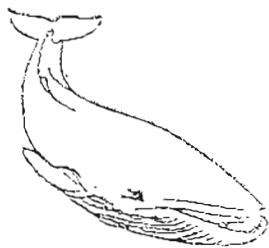
(1)



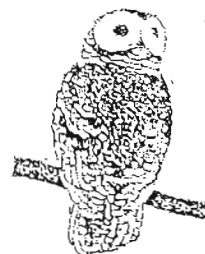
(2)



(3)



(4)



5. Compare Animals D and E shown below.



Animal D

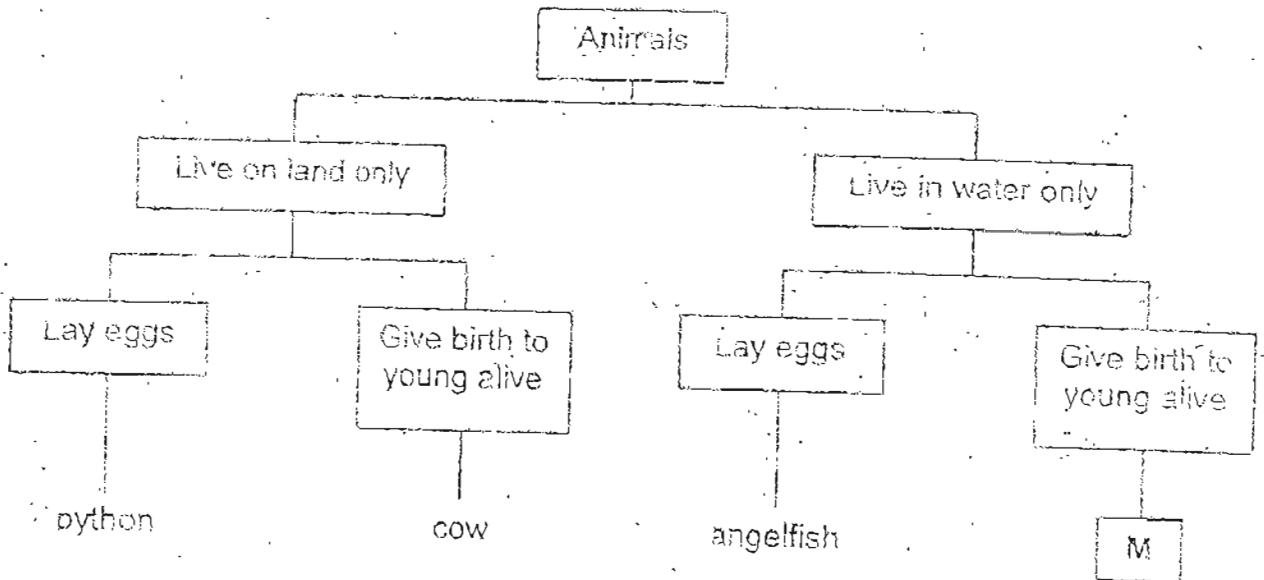


Animal E

Which of the following statements about them is INCORRECT?

- (1) Both lay eggs.
- (2) Both can swim.
- (3) Both have gill covers.
- (4) Both have scales as their outer-covering.

7. Look at the classification table below.

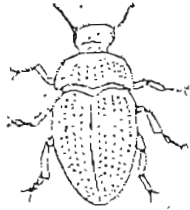


What could M be?

- (1) frog
- (2) guppy
- (3) goldfish
- (4) penguin

8. Which one of the following animals does not have three body parts?

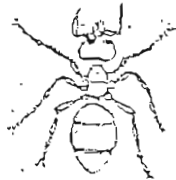
(1)



(2)



(3)



(4)



9. Which of the following are true about Bracket Fungus?

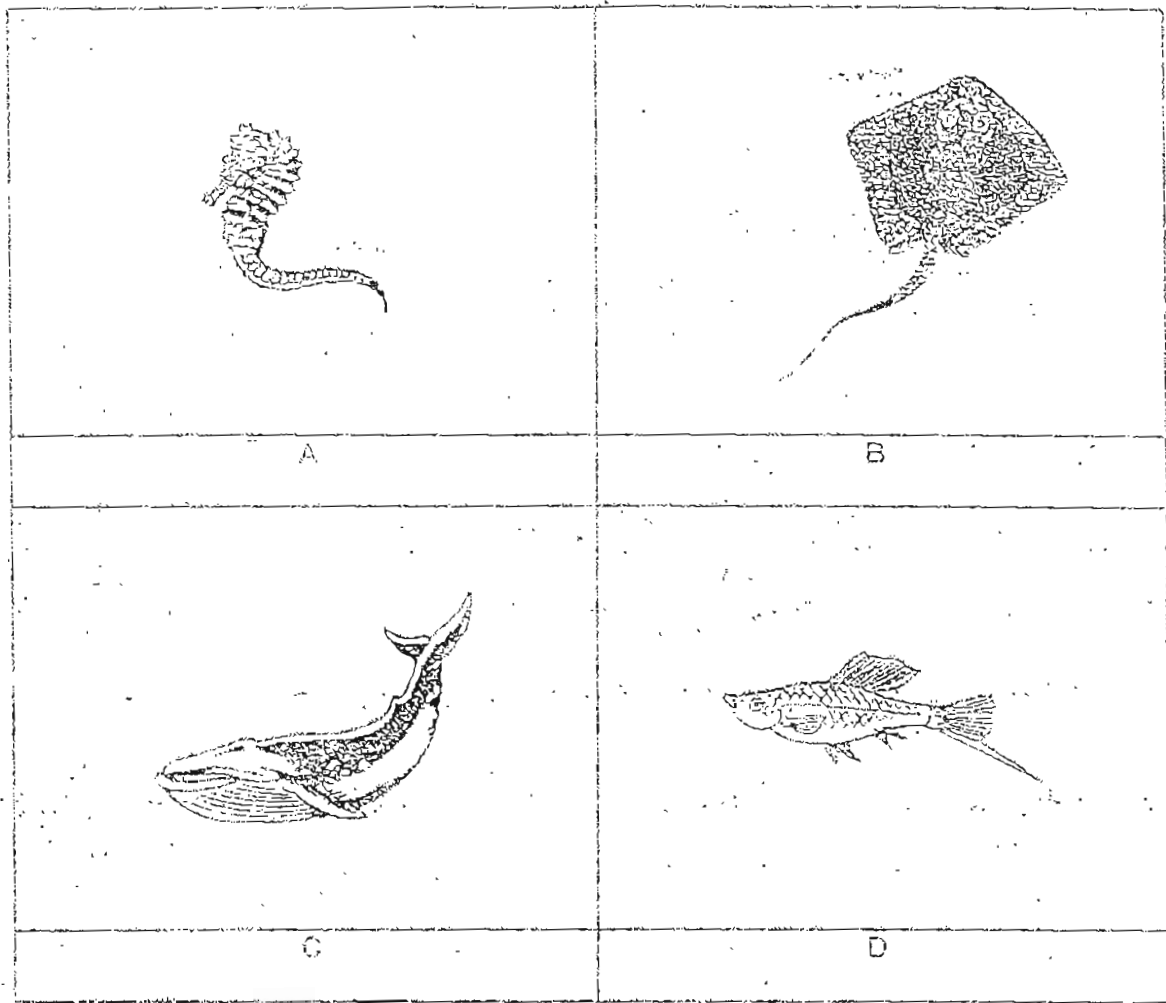
- A: It contains chlorophyll.
- B: It makes its own food.
- C: It reproduces by spores.
- D: It feeds on decaying matter.

- (1) A and B only
- (2) C and D only
- (3) A, B and C only
- (4) B, C and D only

10. Which of the following is CORRECT?

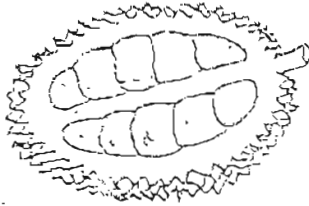
	Animal	Group	Main Food Source
(1)	hawk	bird	plants only
(2)	kingfisher	bird	plants only
(3)	shark	mammal	animals only
(4)	cheetah	mammal	animals only

11. Which of the following animals are fish?

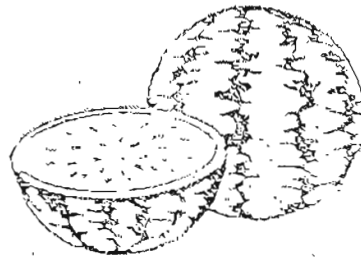


- (1) D only
- (2) B and C only
- (3) A, B and D only
- (4) A, C and D only

12. In what way is Fruit X similar to Fruit Y?



Fruit X



Fruit Y

- (1) It is juicy.
- (2) It is fleshy.
- (3) It has one seed.
- (4) It has edible seeds.

13. Which one of the following animals does not feed its young with mother's milk?

(1)



(2)



(3)



(4)



14. The table below shows two groups of animals

Group A	Group B
bat	swordfish
eagle	electric eel
housefly	W

What could W be?

- (1) giraffe
- (2) vulture
- (3) octopus
- (4) mosquito

15. Mrs Ong bought several items from various sections of a departmental store and grouped them into the table below.

Stationery	Food
cucumber	seaweed
flour	glue
book	ruler

Which of the following items are correctly grouped?

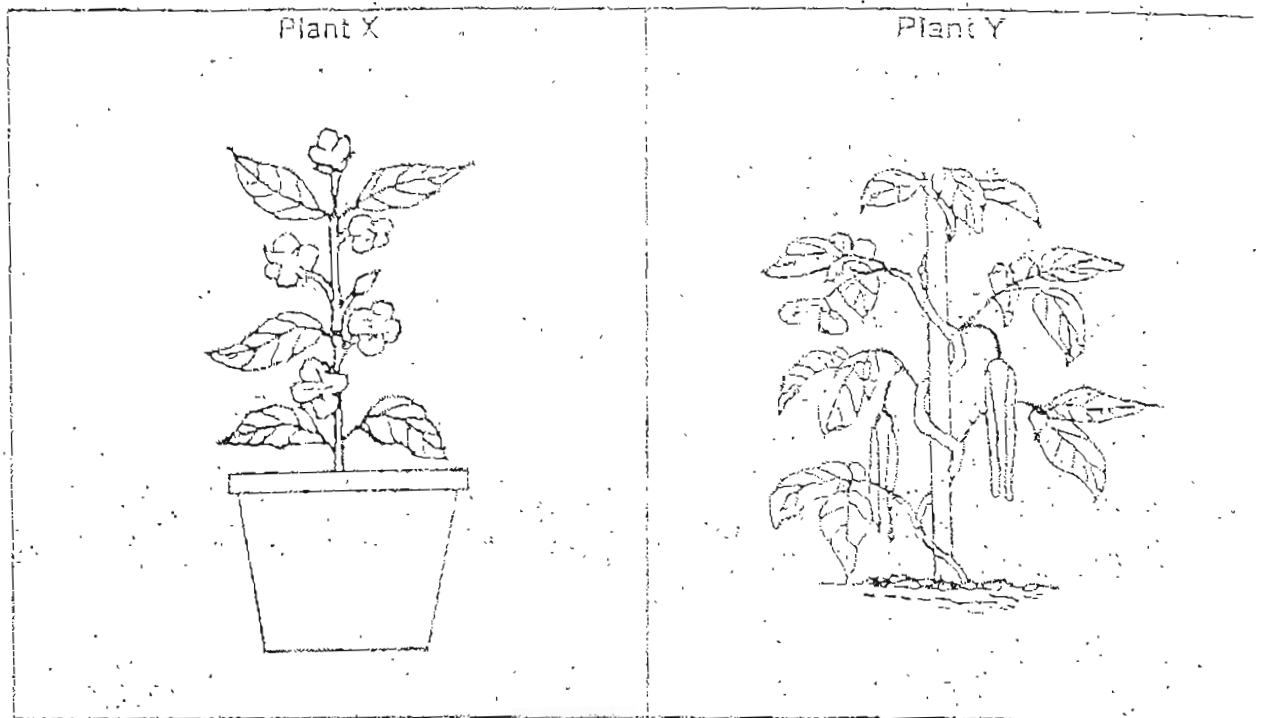
- (1) book and glue
- (2) book and seaweed
- (3) cucumber and glue
- (4) cucumber and ruler

16. The table below shows the food and the plant part that we eat. Which of the following is CORRECT?

	Food Item	Plant Part
(1)	tomato	stem
(2)	carrot	stem
(3)	coconut	leaf
(4)	lettuce	leaf

--

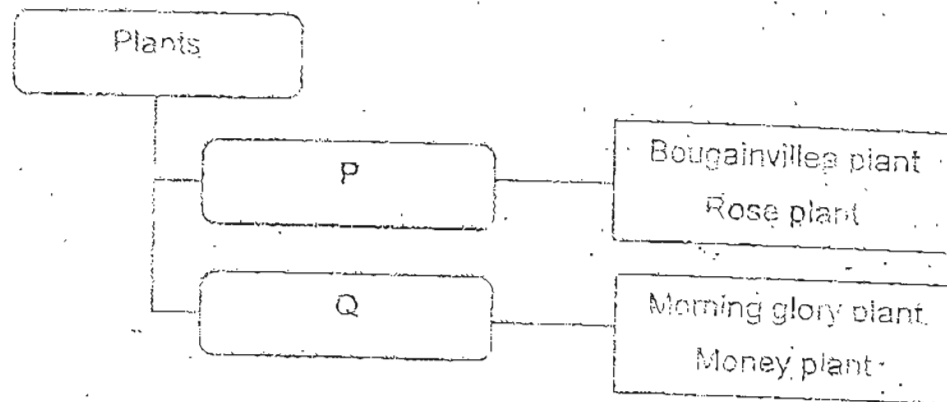
17. Study the two plants shown below.



In what way are Plant X and Plant Y different?

	Plant X	Plant Y
(1)	It has weak stem.	It has strong stem.
(2)	It has strong stem.	It has weak stem.
(3)	Its leaves have jagged edges.	Its leaves have lobed edges.
(4)	Its leaves have lobed edges.	Its leaves have entire edges.

18. Study the classification table below.



Which of the following could be P and Q?

	P	Q
(1)	Land plants	Water plants
(2)	Strong stems	Weak stems
(3)	Flowering plants	Non-flowering plants
(4)	Flowers in cluster	Flowers in singly

19. Study the leaves shown below.



Leaf X



Leaf Y

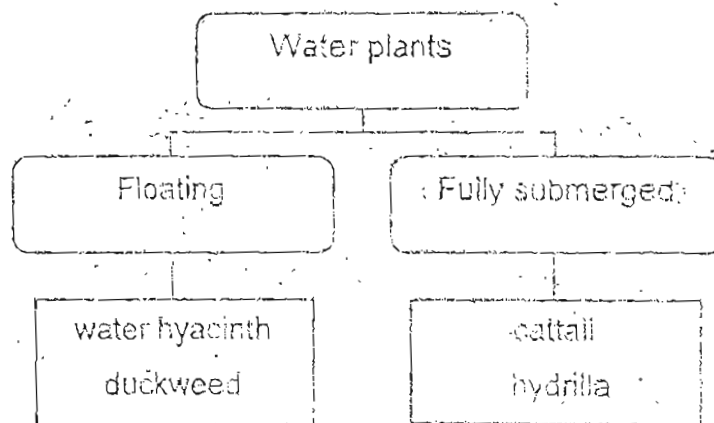


Leaf Z

Which of the following descriptions matches leaves X, Y and Z?

	X	Y	Z
(1)	jagged edge	entire edge	lobed edge
(2)	jagged edge	lobed edge	entire edge
(3)	entire edge	jagged edge	lobed edge
(4)	lobed edge	entire edge	jagged edge

20. Study the classification table below.



Which one of the following plants is wrongly grouped?

- (1) cattail
- (2) hydrilla
- (3) duckweed
- (4) water lettuce

21. Which one of the following plants do not produce flowers?

(1)



sunflower plant

(2)



dumbcane plant

(3)



hibiscus plant

(4)



lantana plant

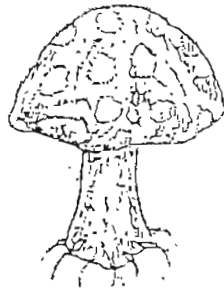
22. Study the table below.

	Plant S	Plant T
Grows on land	No	Yes
Reproduces by spores	No	Yes

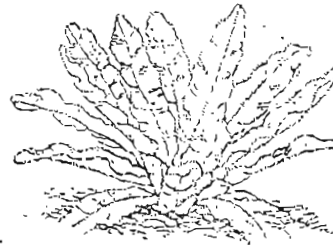
What could Plant S and Plant T be?

	Plant S	Plant T
(1)	Flame of the forest	Rain tree
(2)	Arrowhead	Angsana tree
(3)	Water lily	Stag's horn fern
(4)	Rubber tree	Maidenhair fern

23. Study the two plants shown below.



Plant Q

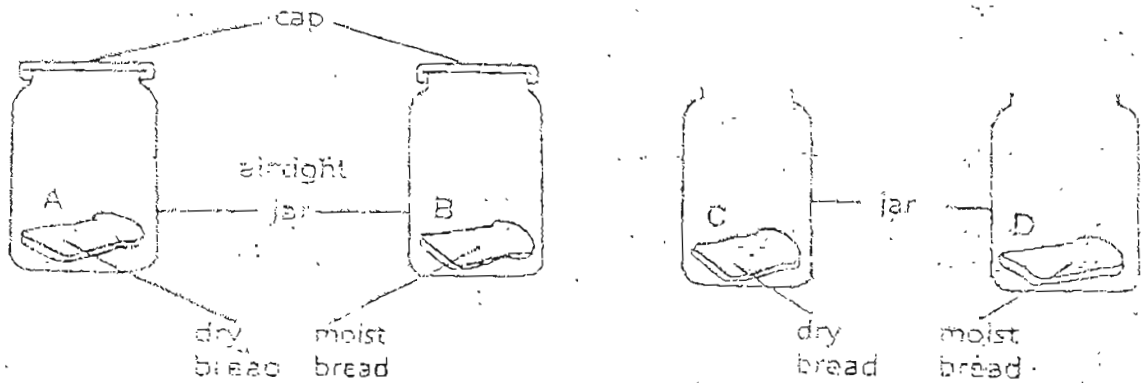


Plant R

In what way are the two plants similar?

- (1) Both have a cap.
- (2) Both reproduce by spores.
- (3) Both feed on decaying matter.
- (4) Both can make their own food.

24. Four pieces of bread, A, B, C and D are treated differently as shown in the diagram below. They were put on the shelf behind the classroom. Which slice of bread will turn mouldy the fastest?



- (1) A
- (2) B
- (3) C
- (4) D

25. Four different types of food P, Q, R and S were kept in the same place for a week. The table below shows the changes that were observed at the end of the week.

Food	Condition	Changes in	
		Colour	Smell
P	Moist	Yes	No
Q	Moist	Yes	Yes
R	Moist	No	No
S	Moist	No	Yes

Which one of the following foods has fungus growing on them?

- (1) P and Q only
- (2) R and S only
- (3) P, R and S only
- (4) P, Q and S only

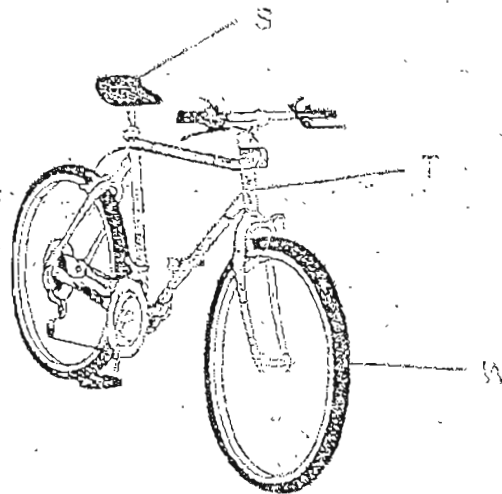
26. Ahmad conducted several tests on materials A, B, C and D. He recorded the results in the table below.

	A	B	C	D
Waterproof	Yes	No	Yes	No
Break when dropped	Yes	Yes	No	No

What material would be most suitable to make a basketball?

- (1) A
- (2) B
- (3) C
- (4) D

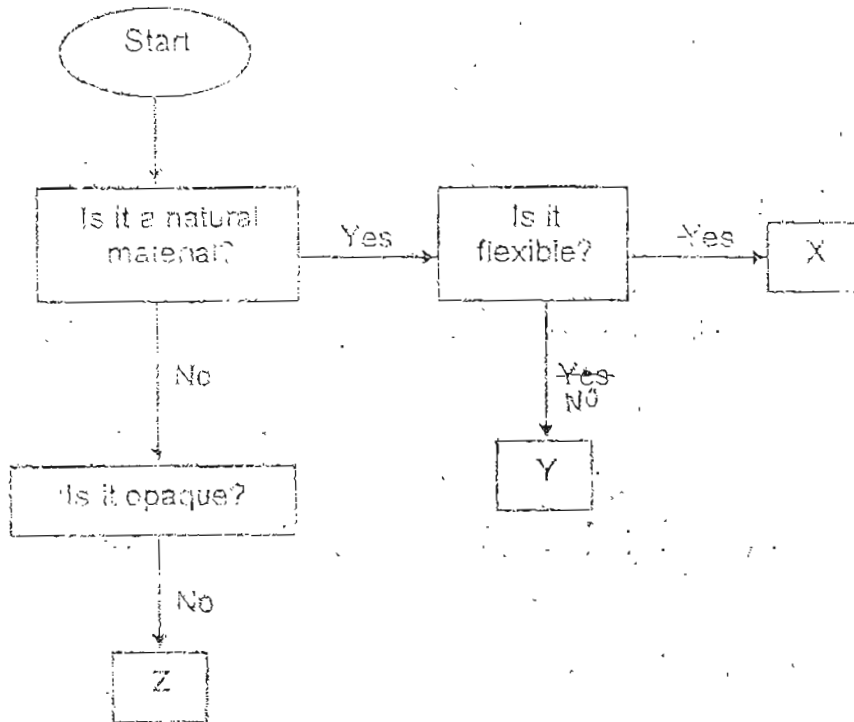
27. A bicycle is made of more than one material.



Which materials could S, T and W be?

	S	T	W
(1)	rubber	rubber	plastic
(2)	plastic	metal	rubber
(3)	plastic	metal	plastic
(4)	metal	rubber	rubber

28. Study the flow chart below



Which of the following objects could be X and Z?

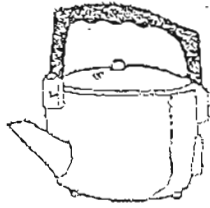
	X	Z
(1)	glass jar	windscreen
(2)	plastic ruler	wooden chair
(3)	tyre	food wrap
(4)	key	nylon rope

29. Which one of the following materials comes from animals?

- (1) nylon
- (2) wood
- (3) cotton
- (4) leather

30. Which one of the following objects is made of only one material?

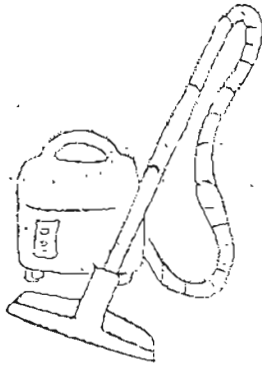
(1)



(2)



(3)



(4)



Section B (40 marks)

Write your answers to questions 31 to 46 in this booklet.
Fill in the blanks with the correct answers.

31. Ben planted some bean seeds in a container. After a few days, he noticed that the bean seeds had become seedlings.

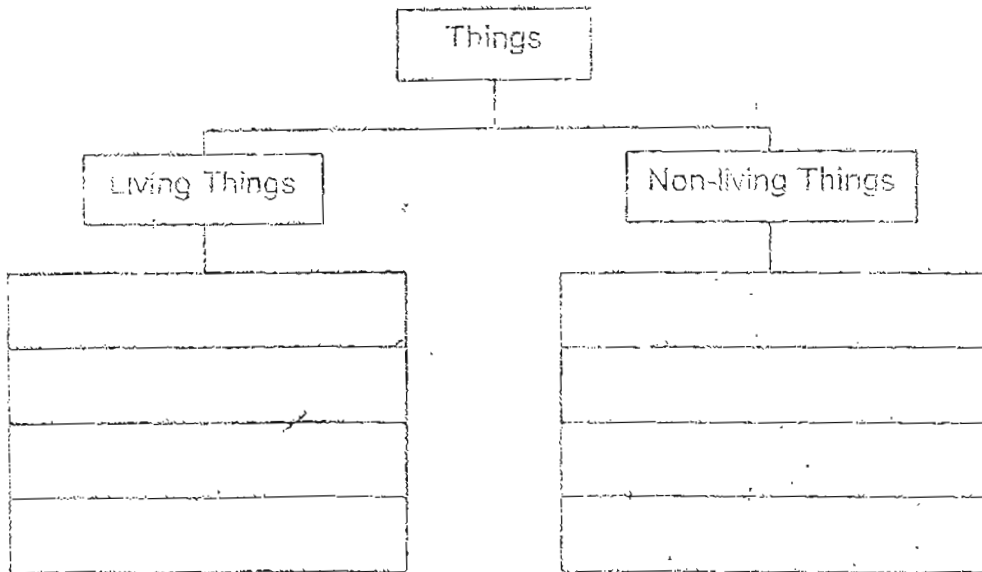
(a) This shows that living things can _____ [1]

(b) Which one of the following shows the same characteristic as (a)?
Put a tick (✓) in the correct box. [1]

(i)	A chick becoming a hen.	
(ii)	A boy drinking water.	
(iii)	A mimosa plant closing its leaves when touched	

32. Complete the classification table with the words given in the box. [3]

paper clip	polar bear	leather bag
plastic pail	cotton shirt	moss



33. Study the table below.

Group P	Group Q
marble	cotton wool
rock	sponge
coin	t-shirt

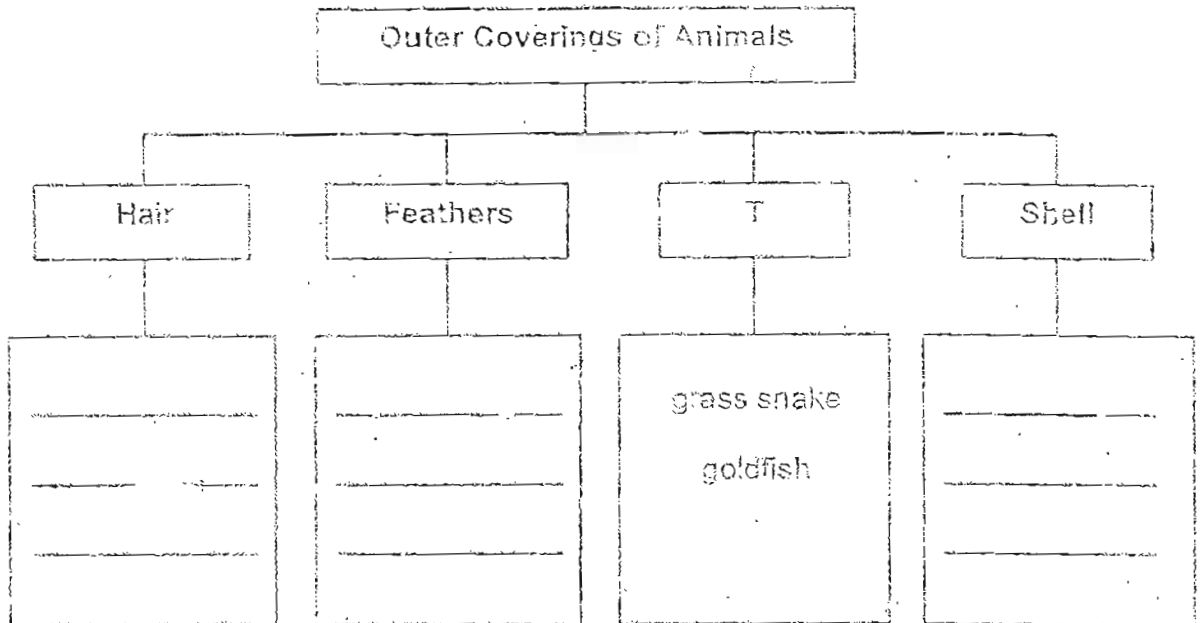
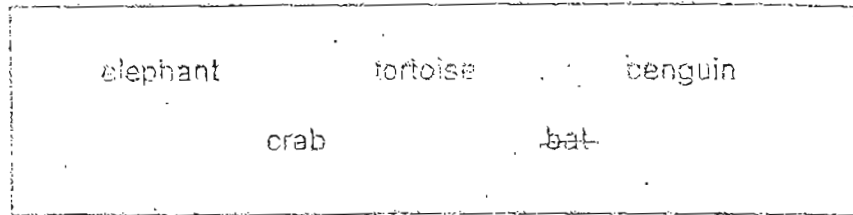
(a) How are the objects grouped?

[1]

(b) In which group should 'jelly' be placed?

[1]

- 34 (a) Classify the animals given in the box below according to their outer body coverings. [2/1]



- (b) Identify the outer covering marked T. [1]

--

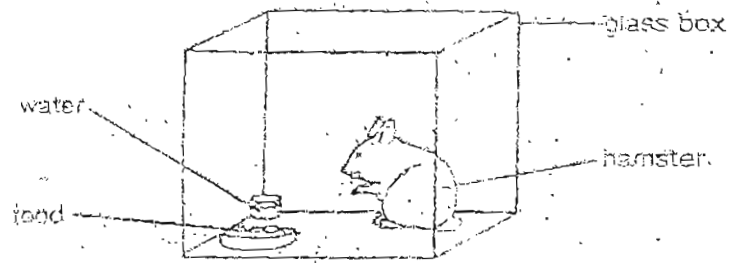
35. Joe recorded some animals that live in the pond, garden and sea as below.

Pond	toad, guppy, frog
Garden	earthworm, snail, prawn
Sea	Seahorse, turtle, lobster

- (a) Which animal was wrongly placed? [1]
Explain why it should not be placed there.

- (b) In which of the above place do you think he could find tadpoles? [1]

35. A hamster was put in a glass box which contained water and food. Then a glass lid was put on the box so that it was airtight.



(a) What do you think would happen to the hamster after a few hours?

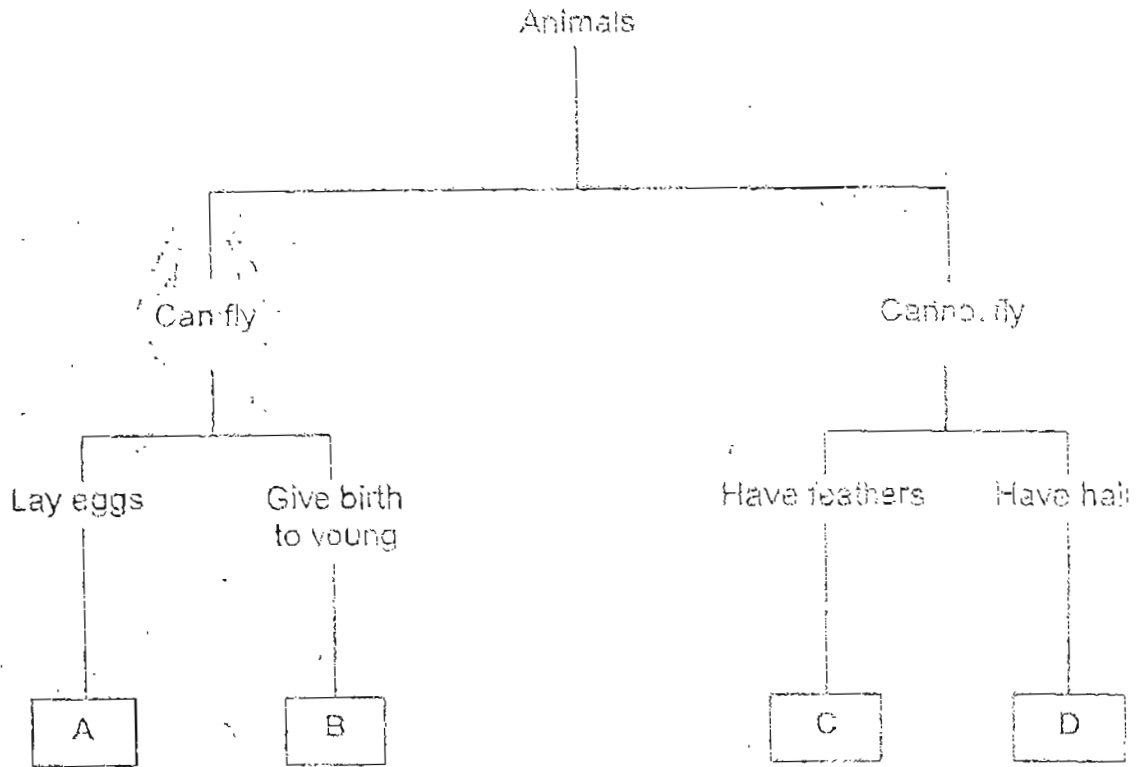
[1]

(b) Give a reason for your answer to (a):
Explain what could have been done to prevent it from happening.

[2]

--

37. Study the classification below.

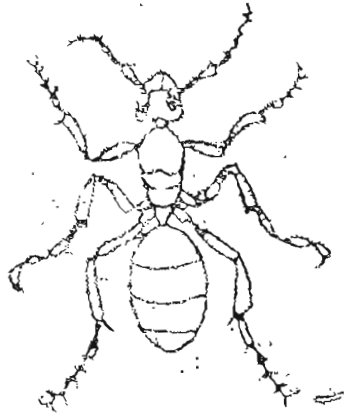


(a) State the characteristics of Animal B. [1]

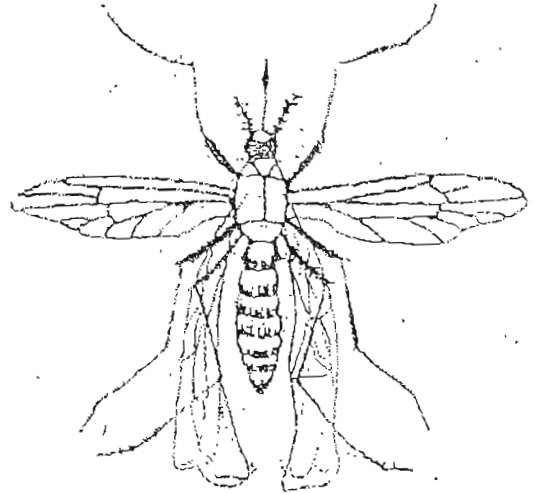
(b) Five animals are given below. Circle the animal(s) that cannot be classified in the classification table shown above. [1]

Bat Worm Clownfish Emu Butterfly

38 Study the two animals below and answer the questions.



Ant



Mosquito

- (a) Based on what you see in the diagram, state two similarities between the 2 animals.

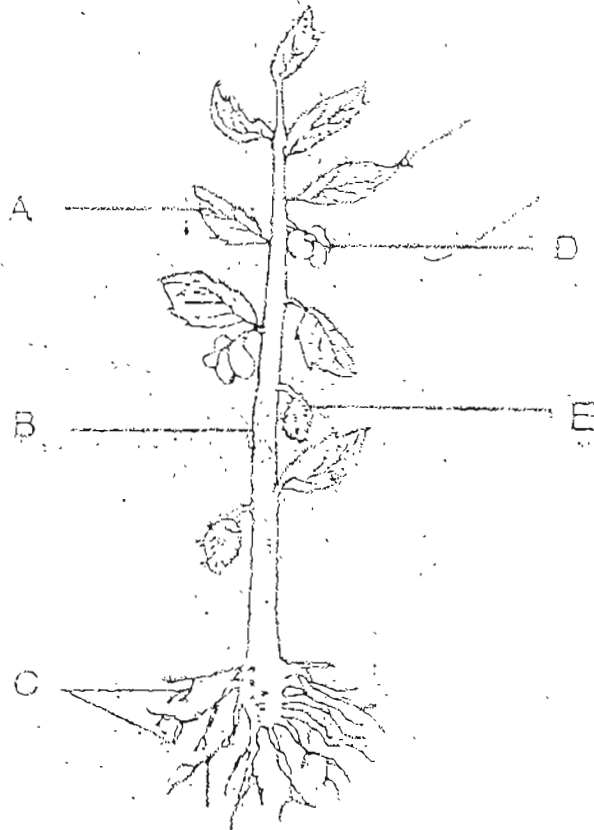
[1]

- (b) How are the animals different with regards to the way they move?

[1]

39. The diagram shows a plant.

(a) Draw an arrow (\longrightarrow) to the part that makes food for the plant. [2]



(b) Name the parts of the plant labelled A - E. [2]

A: _____

B: _____

C: _____

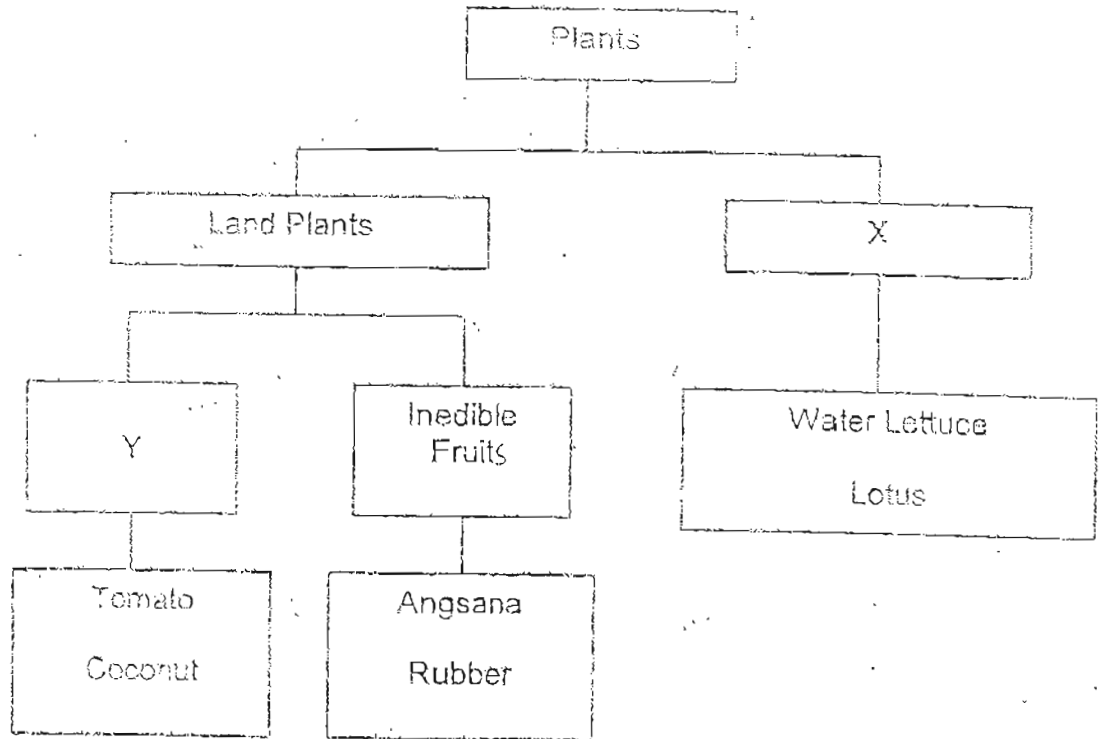
D: _____

E: _____

--

40. Study the classification table below.

[2]



Give suitable headings for X and Y.

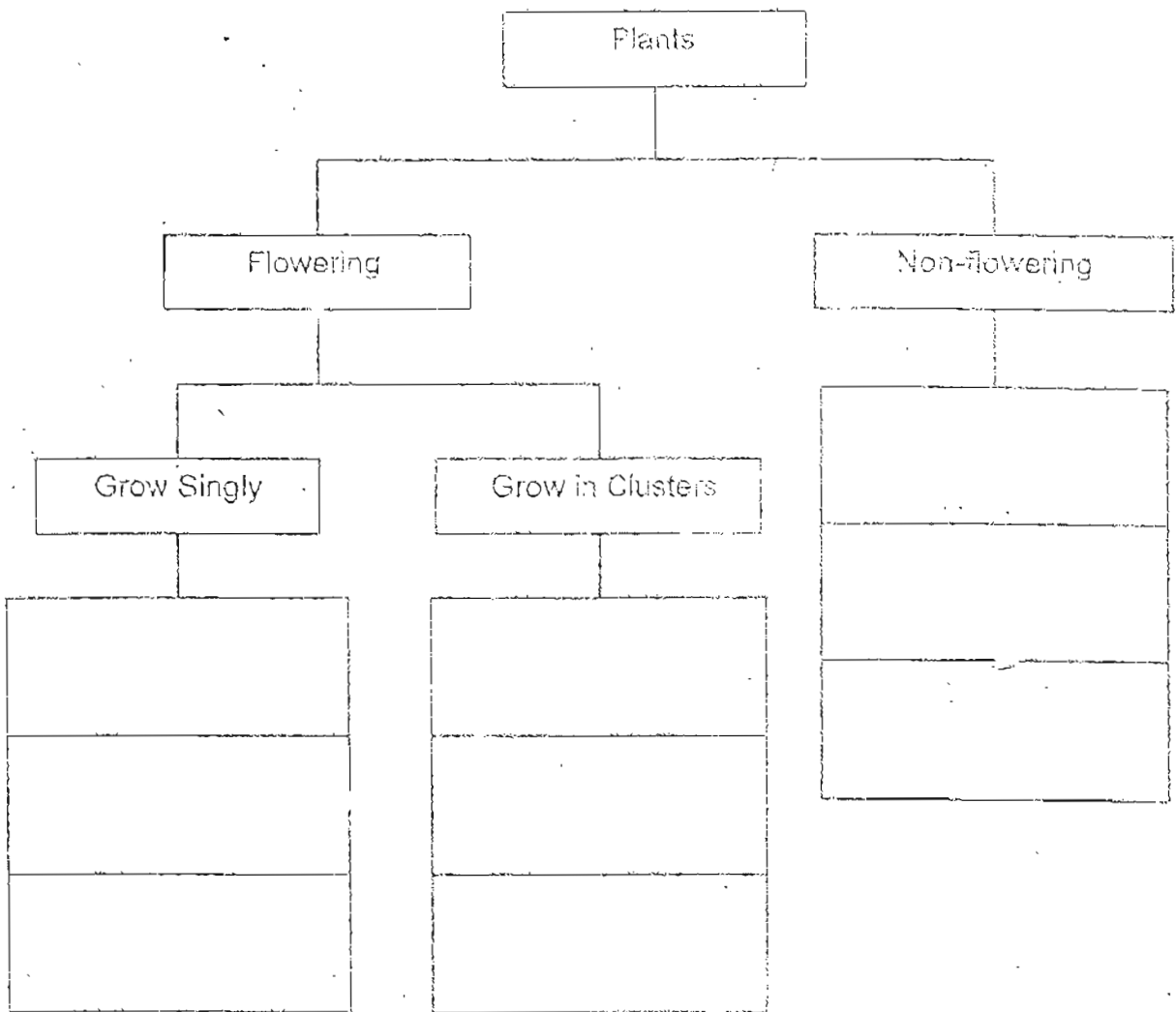
X: _____

Y: _____

41. Classify the plants in their correct groups.

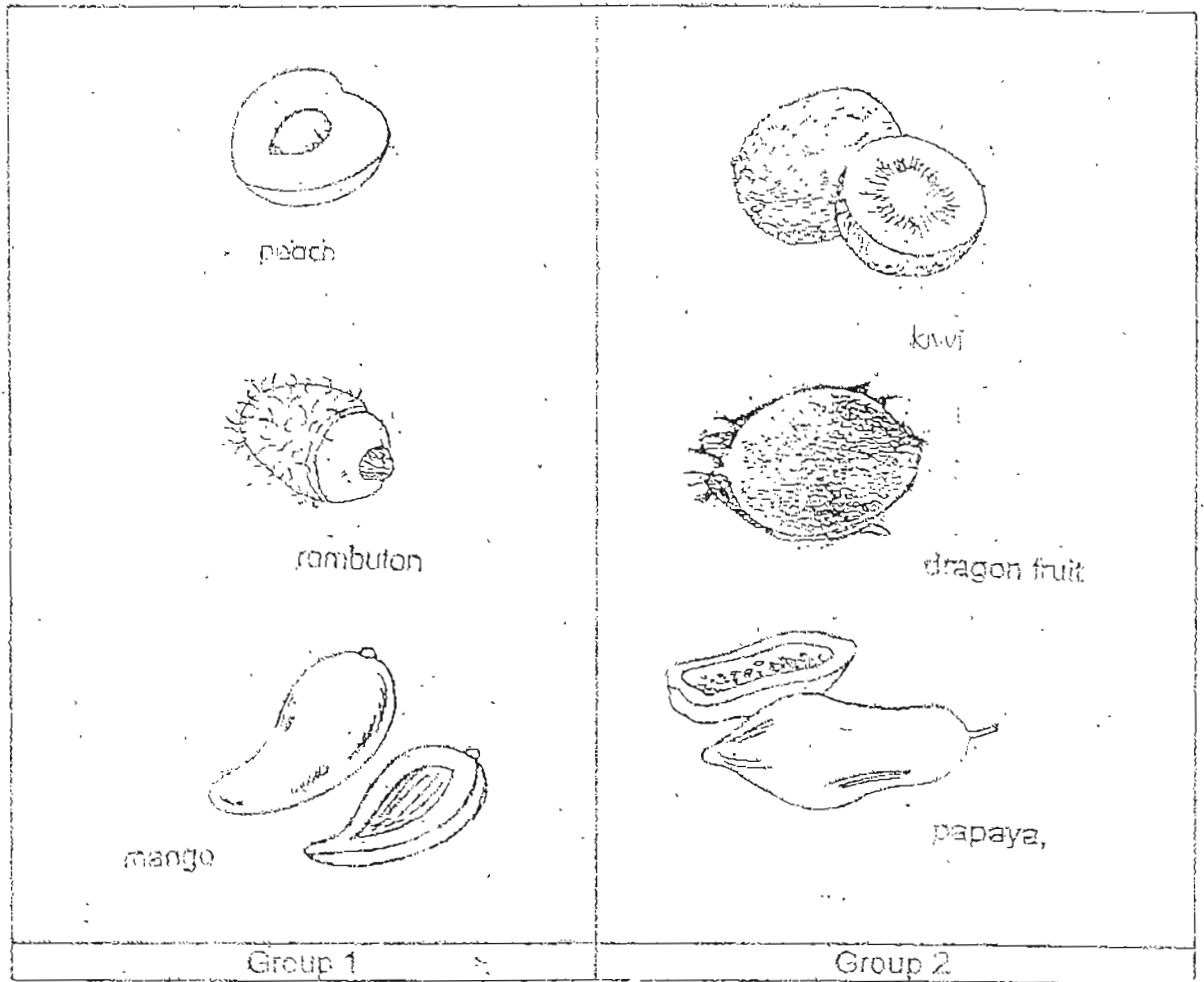
[3]

Frangipani	Bird's Nest Fern	Sunflower
Moss	Hibiscus	Ixora



--

42. The fruits are put into 2 groups.



(a) How are the fruits grouped?

[1]

(b) State one difference between a mango and a rambutan.

[1]

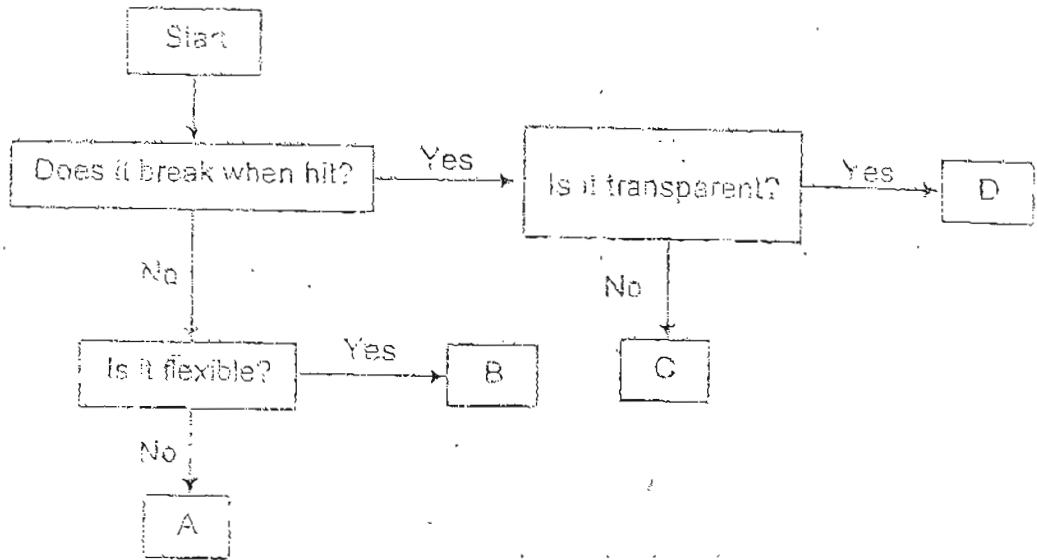
43. (a) Micro-organisms are very tiny living things. [1]
Name the instrument that we can use to view micro-organisms.

- (b) Explain why some micro-organisms are harmful to people? [1]

- (c) Yeast is a micro-organism. Why is it useful to us? [1]

--

44. Study the flow chart below.

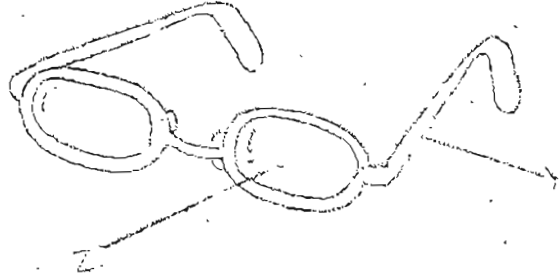


Identify the following represented by letters in the flow chart.
Write the correct letter in the space provided.

[2]

Metal rod	
Claypot	
Rubber band	
Fish Tank	

45. The picture shows a pair of spectacles.



(a) Z is made of plastic instead of glass.
In what way is plastic better?

[1]

(b) Y is made of metal. Name another material that can be used to make Y.

[1]

(c) Tick (✓) the objects that can be made from the same materials as a pair of spectacles.

[1]

Objects	
coffee cup	
Towel	
Box	
magazine	

--

46. (a) Draw lines to match the uses to the most suitable object. [2]
Each object can be used only once.

Warm baked beans over open flame	plastic container
Pack sandwiches to take to school	metal container
Serve dinner in a restaurant	porcelain plate
Serve fried rice during a picnic	paper plate

- (b) Ravi is going for a camp where he will be doing outdoor cooking. Which one of the objects above should he take with him? [½]

- (c) Why? [½]

END-OF-PAPER

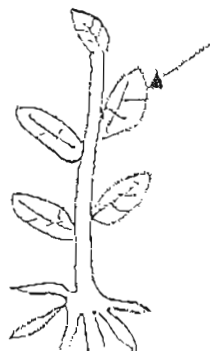
--

ANGLO CHINESE SCHOOL (JUNIOR)
SEMESTRAL ASSESSMENT 1 - 2004
PRIMARY THREE SCIENCE

57/1.

01. 3	11. 3	21. 2
02. 1	12. 2	22. 1 (3)
03. 3	13. 4	23. 3 (2)
04. 4	14. 3	24. 1
05. 2	15. (2)	25. 4
06. 3	16. 4	26. 3
07. 2	17. 2	27. 2
08. 4	18. 2	28. 3
09. 2	19. 1	29. 4
10. 4	20. 1	30. 4

- 31) a) reproduce b) tick i)
- 32) Polar bear paper clip
moss leather bag
 plastic pail
 cotton shirt
- 33) a) They are grouped by hard and soft b) Group Q
- 34) bat penguin tortoise
elephant crab
- b) The outer covering marked T is scales
- 35) a) Prawn. It should be found in the sea and not in the garden.
b) Pond
- 36) a) It would die
b) The hamster will die because it does not have air. To prevent it from happening, the owner should not put on the lid.
- 37) a) It gives birth to its young and can fly.
b) Circle worm clownfish
- 38) a) They both have six legs and three body parts.
b) The ant walks with its legs and the mosquito flies with its wings.
- 39) a)



- b) A : leaf
B : stem
C : roots
D : flower
E : fruit

40) X : water plants

Y . edible fruits


41) Hibiscus Ixora Moss
Sunflower Frangipani Bird's nest fern

42) a) They are grouped by the number of seeds.
b) A rambutan's skin is hairy whereas a mango's skin is smooth and not hairy.

43) a) Microscope
b) They can cause some illness such as sore-throat.
c) Yeast makes bread fluffy.

44) A
C
B
D

45) a) Plastic is better because it will not break easily.
b) Plastic is another material.
c) Tisk coffee cup and Box

46) a) 

b) Paper plate
c) Paper plates are light and disposable.