

NAME: _____ ()

SAT

CLASS: Primary 3. _____

METHODIST GIRLS' SCHOOL (PRIMARY)

MID-YEAR EXAMINATION

PRIMARY THREE

SCIENCE

2005

SECTION	MARKS
A	/ 60
B	/ 40
TOTAL	

Section A (60 marks)

For each question from 1 to 30, four options are given. One of these is the correct answer. Make your choice (1, 2, 3 or 4). Shade the correct oval (1, 2, 3 or 4) on the Optical Mark Sheet provided.

1. Which one of the following is made from something that was once alive?
- (1) crystal vase
 - (2) plastic bottle
 - (3) ceramic teapot
 - (4) woollen sweater
2. Which of the following are characteristics of all living things?
- (A) They can move.
 - (B) They can grow.
 - (C) They can give birth.
 - (D) They need air, food and water.
- (1) A and B only
 - (2) C and D only
 - (3) A, B and D only
 - (4) B, C and D only
3. Which of the following will respond to touch?
- (A) water
 - (B) mimosa
 - (C) earthworm
 - (D) cotton wool
- (1) A and B only
 - (2) C and D only
 - (3) B and C only
 - (4) A and D only

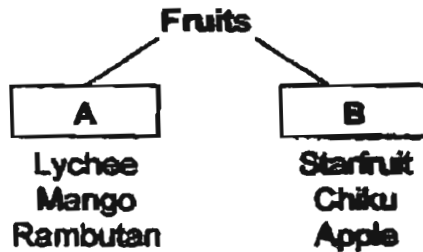
4. This black coffee is bitter. You have forgotten to add some sugar.

Which senses did Tom make use of?

- (A) sight
- (B) smell
- (C) taste
- (D) touch

- (1) A and B only
- (2) C and D only
- (3) A and C only
- (4) A, B, C and D

5. Some fruits have been put into 2 groups.



How have the fruits been classified?

	A	B
(1)	edible	inedible
(2)	one seed	few seeds
(3)	rough skin	smooth skin
(4)	juicy	dry

6. The statements below describe a fruit.

- (A) It has many seeds.
- (B) It grows on the ground.
- (C) It is big and has a smooth skin.

Which one of the following fruits fits the descriptions above?

- (1) durian
- (2) papaya
- (3) jackfruit
- (4) watermelon

7. Which of the animals breathe through gills?

tadpole



snake

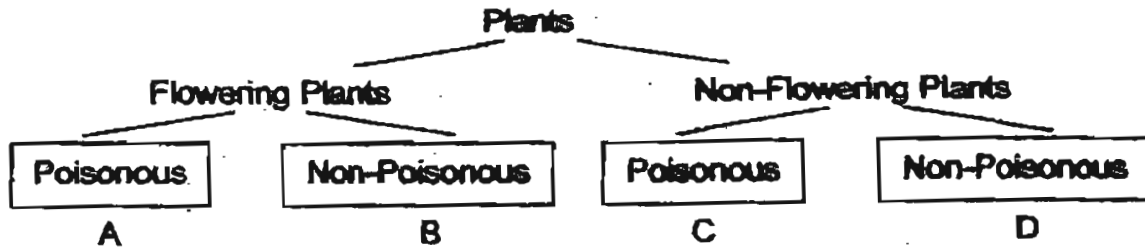


seahorse



- (1) seahorse
 - (2) snake and tadpole
 - (3) seahorse and snake
 - (4) seahorse and tadpole
8. Which one of the following statements is not true about the housefly and dragonfly?
- (1) Both lay eggs.
 - (2) Both have six legs.
 - (3) Both have three body parts.
 - (4) Both have two pairs of wings.
9. The caterpillar feeds on _____.
- (1) rotting leaves
 - (2) micro-organisms
 - (3) young green leaves
 - (4) dead brown leaves
10. Whales and dolphins breathe in oxygen using their _____.
- (1) gills
 - (2) skin
 - (3) lungs
 - (4) breathing holes

11.



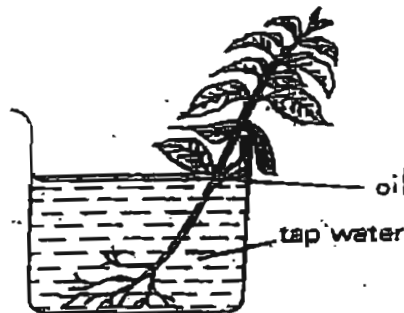
Where should the word 'allamanda' be placed?

- (1) A
- (2) B
- (3) C
- (4) D

12. The roots of plants always grow _____.

- (1) sideways
- (2) towards air
- (3) towards water
- (4) towards light

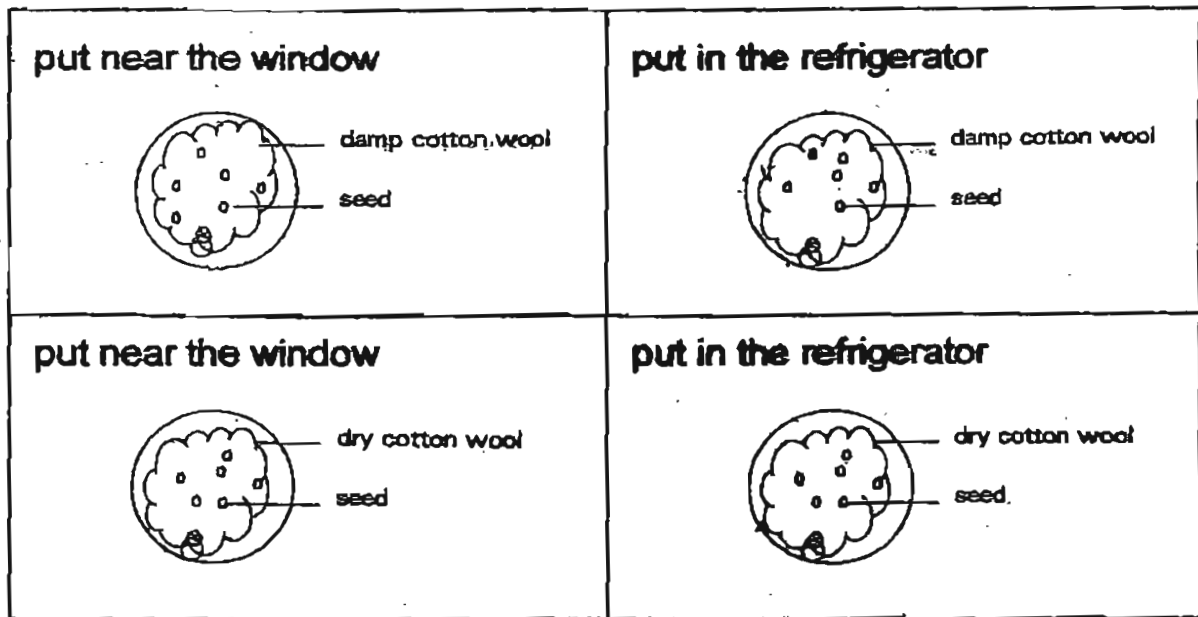
13.



Mei Mei set up the above experiment. She filled the beaker with 200 ml of water and placed the set-up near an open window for one day. Which one of the following results shows the most likely amount of water in the beaker at the end of the experiment?

	Start of Experiment	End of Experiment
(1)	200 ml	210 ml
(2)	200 ml	200 ml
(3)	200 ml	190 ml
(4)	200 ml	100 ml

14. Mary set up an experiment as shown in the diagram. At the end of the experiment, she observed that the seeds grew into seedlings in one petri-dish but not in others.

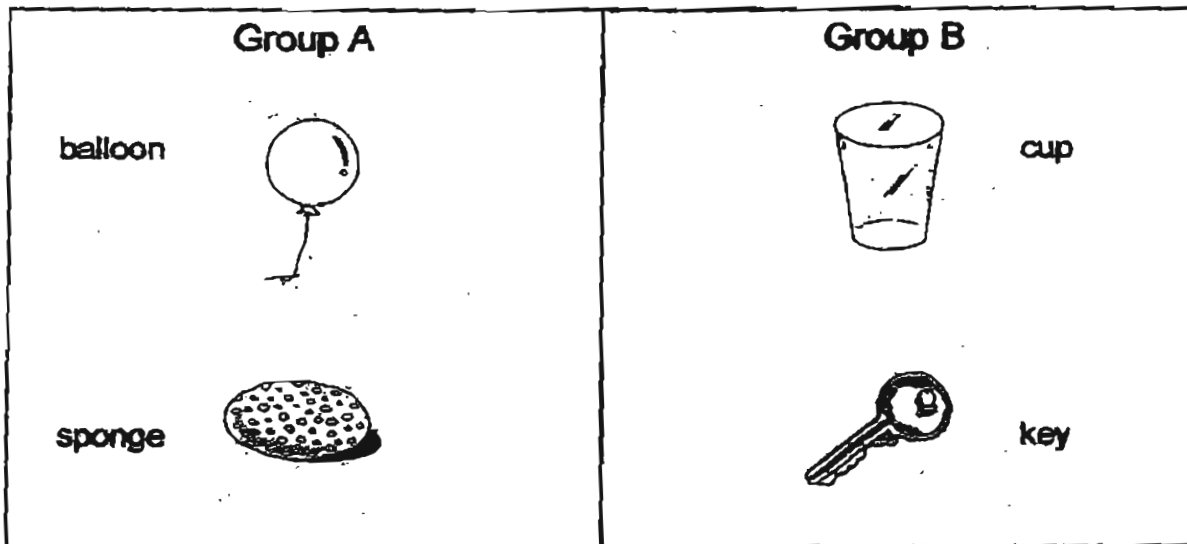


In the experiment Mary was trying to find out _____

- (1) whether seeds need light to grow
 - (2) whether seeds can grow in cotton wool
 - (3) whether seeds need water and light to grow
 - (4) whether seeds need water and warmth to grow
15. Moulds grow best in _____ conditions.
- (1) hot
 - (2) dry
 - (3) cold
 - (4) damp
16. Which statements are true of bacteria?
- (A) Bacteria can reproduce.
 - (B) All bacteria are harmful.
 - (C) Bacteria live in the air, water and soil.

- (1) A and B only
- (2) B and C only
- (3) A and C only
- (4) A, B and C

17. Four objects are classified into two groups as shown below.



The objects are grouped according to _____.

- (1) whether they are flexible
- (2) whether they are waterproof
- (3) whether they are hard or soft
- (4) the materials they are made of

18. Mrs Tan prefers a plastic pail to a metal pail. Which of the following is a possible reason for this?

- (1) Metal rusts easily.
- (2) Metal is not durable.
- (3) Metal is not strong enough.
- (4) Metal can be scratched easily.

19. Which statement about materials is true?

- (1) All materials are man-made.
- (2) All materials come from animals.
- (3) Each material has one use only.
- (4) Different materials have different uses.

20. Benny has a screw driver which is made of two materials. The materials used are likely to be _____.

- (1) clay and metal
- (2) wood and metal
- (3) glass and metal
- (4) rubber and metal



21. Raincoats are usually made of plastic because plastics are

- (A) light
- (B) waterproof
- (C) transparent

- (1) A and B only
- (2) B and C only
- (3) A and C only
- (4) A, B and C

22. Which one of these objects does not make use of magnets?

- (1) doorbell
- (2) telephone
- (3) calculator
- (4) refrigerator door

23.



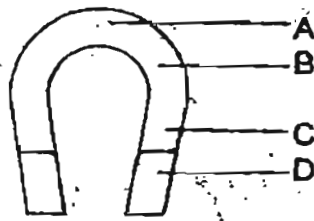
When we hang a bar magnet in the air and let it rotate freely, it will come to rest _____.

- (1) in any direction
- (2) in an east-west direction
- (3) in a north-south direction
- (4) in an upside down position

24. A _____ magnet can attract more magnetic pins.

- (1) big
- (2) small
- (3) strong
- (4) heavy

25.



The pull of the magnet is weakest at _____.

- (1) A
- (2) B
- (3) C
- (4) D

26. Each of the following nails A, B and C is stroked 30 times with one pole of a strong magnet. Which of the nails will be able to attract iron filings after being stroked?

- (A) Iron nail
- (B) Steel nail
- (C) Copper nail

- (1) A only
- (2) B only
- (3) A and B only
- (4) B and C only

27. Which of the following statements about the magnets are correct?



- (A) Magnet X will repel magnet Y.
- (B) Magnet Y will repel magnet X.
- (C) Magnet X will attract magnet Y.
- (D) Magnet Y will attract magnet X.

- (1) A and B only
- (2) C and D only
- (3) A and D only
- (4) B and C only

22

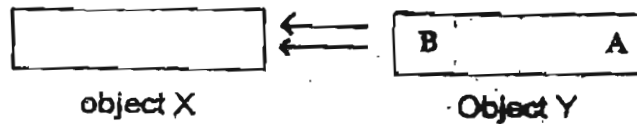
28. Which one of the following objects will be attracted by a magnet?

- (1) needle
- (2) gold ring
- (3) silver chain
- (4) ten-cent coin

29.



When object X is placed near point A of object Y, object Y moves towards it.

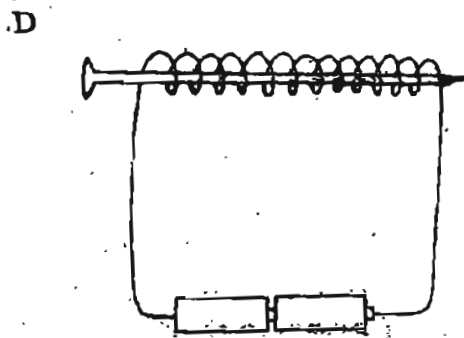
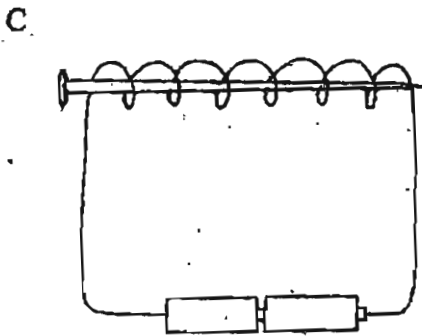
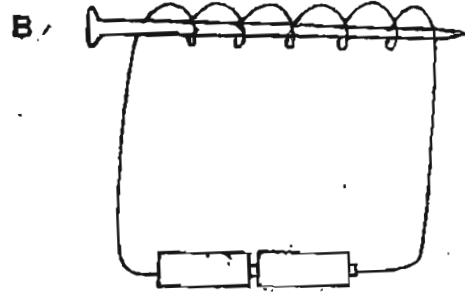
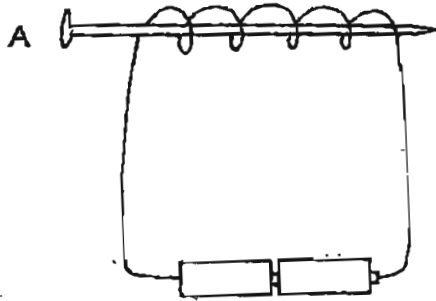


When object X is placed near point B of object Y, object Y also moves towards it.

Which of the following statements are true about object X and object Y?

- (A) Object X is a magnet.
 - (B) Object Y is made of iron.
 - (C) Both object X and object Y are magnets
-
- (1) A and B only
 - (2) A and C only
 - (3) B and C only
 - (4) A, B, and C

30. Arrange the following electromagnets in order from the strongest to the weakest.

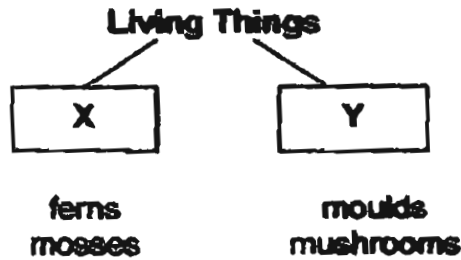


- (1) A, C, B, D
- (2) D, C, B, A
- (3) D, B, C, A
- (4) A, B, C, D

Section B (40 marks)

Write your answers in the space provided.

31. Look at the classification table below carefully.



(a) Give a suitable heading for X and Y. [2 m]

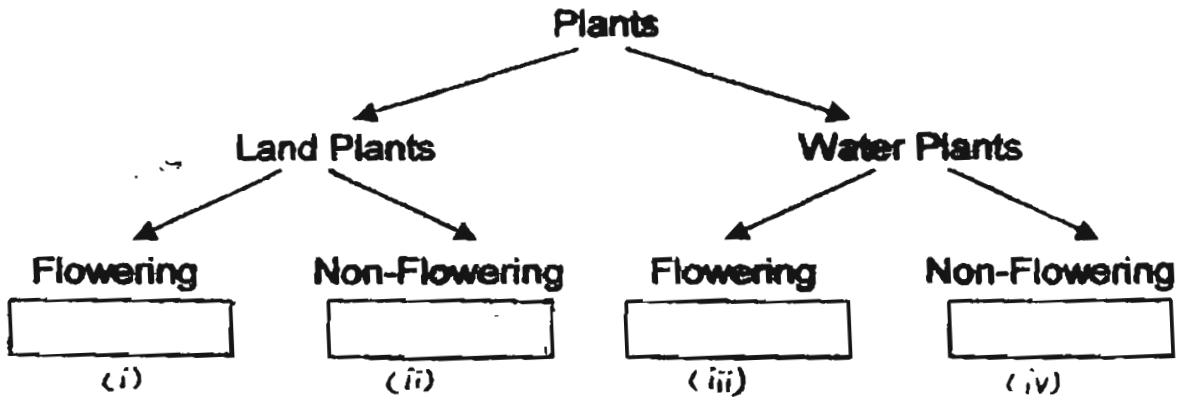
X: _____

Y: _____

(b) In which group would you classify 'yeast'. [1 m]

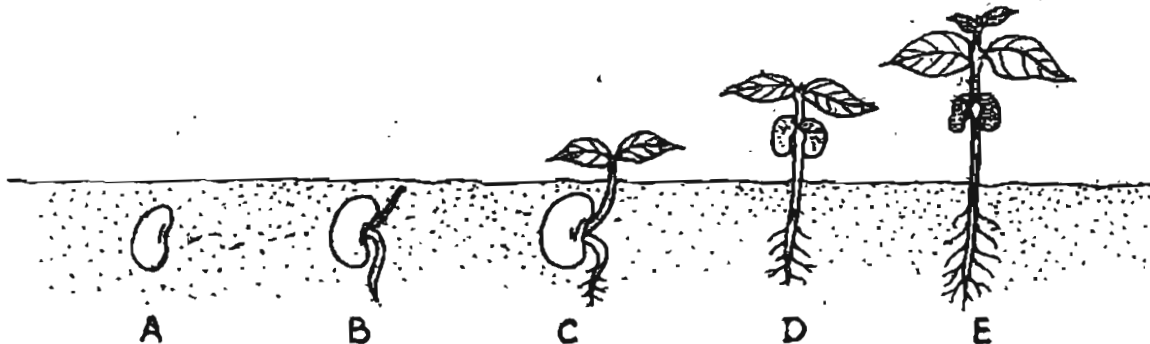
(c) The living things in Group X and Group Y reproduce by _____ [1m]

32. Classify the following plants into four groups in the chart below. [4 m]



25

33. The illustrations below show stages of growth of a bean sprout plant.



Fill in the blanks with appropriate words.

[5 m]

The _____ (root, shoot) comes out first and the _____ (root, shoot) next.

The baby plant gets food from the _____ (soil, seed).

The plant is able to make food at stage _____ (B, C)

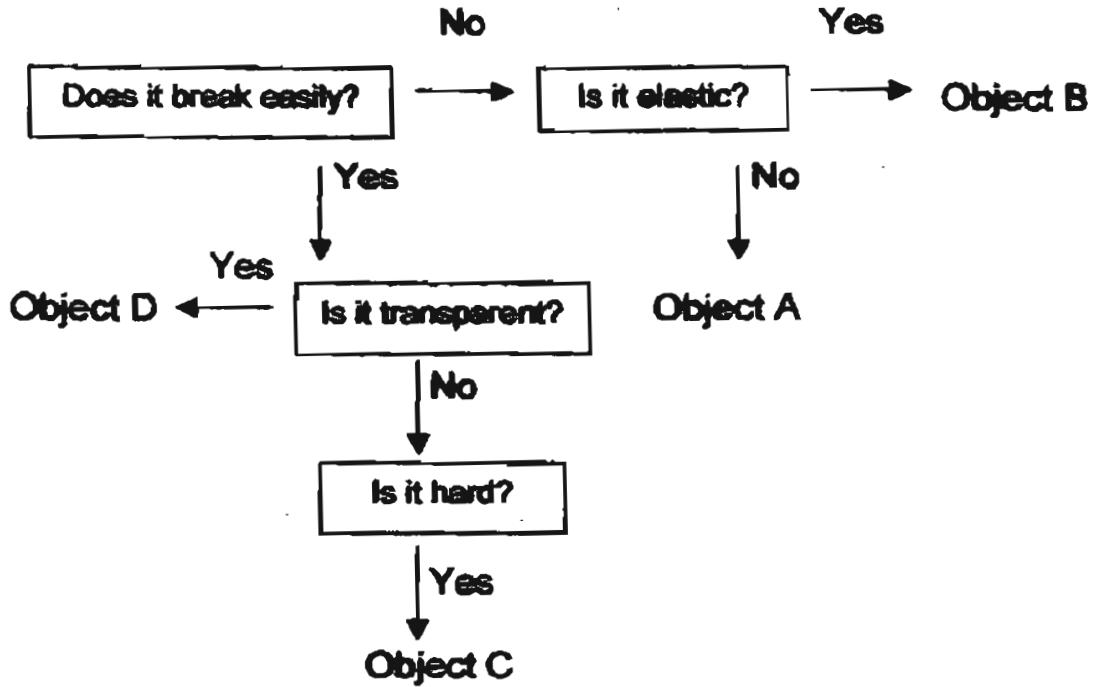
because it has _____ (roots, leaves).

34. Four children have some objects which are made from different materials. In the table below, the black dots indicate the different materials they are made of. From the objects listed in the box below, write the correct answers in the space below the dots. [6 m]

eraser elastic band cup safety pin ruler dress

	Wood	Plastic	Metal	Rubber	Fabric	Ceramic
Mei Mei				• c)		
Devi				• d)		• f)
Rani	• a)				• e)	
Jane			• b)			

35. Below is a flow chart on materials and their properties.



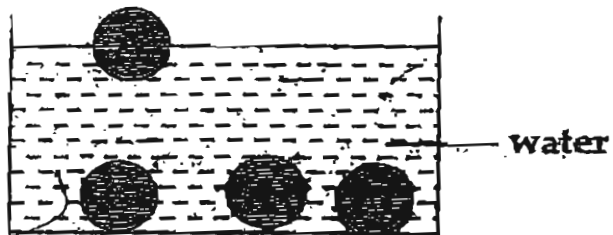
From the given list below fill in the most suitable material for the objects in the table below. [4 m]

rubber	wood	glass	ceramics
--------	------	-------	----------

Objects	Materials
A	_____
B	_____
C	_____
D	_____

36. Four solid balls of the same size are made of the following materials, ceramic, cork, glass and plasticine.

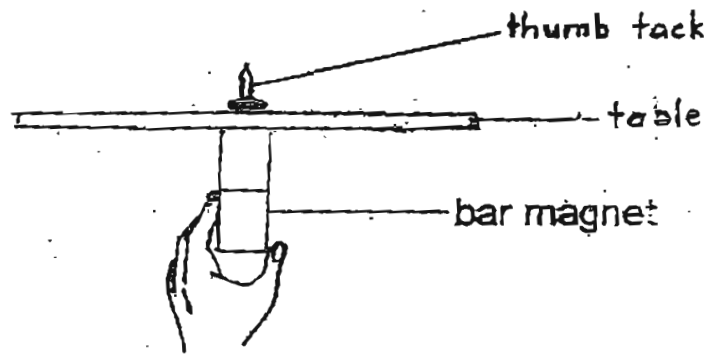
The diagram below shows their positions in the huge container of water.



- (a) What is ball A likely to be made of? [1 m]

Ball A _____

- (b) Give a reason for your choice of answer in (a). [2 m]

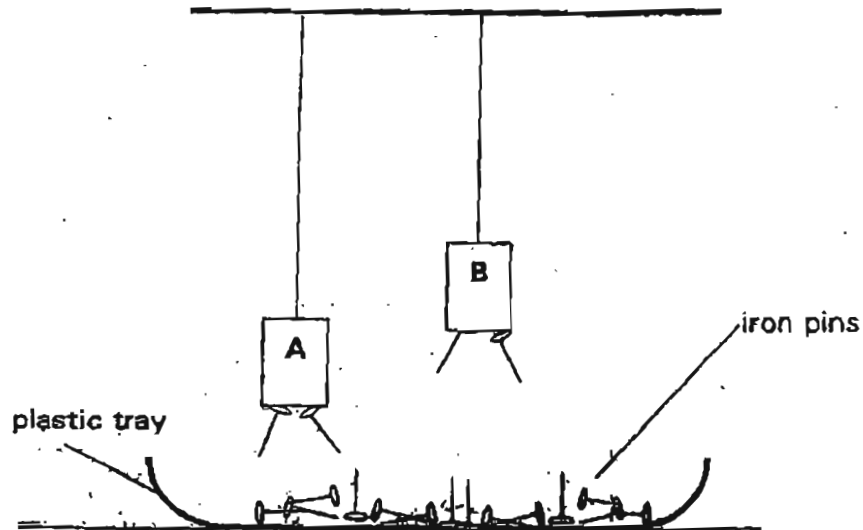


Jane placed a steel thumbtack on a table top. When she moved the magnet on the underside of the table, the thumbtack moved along with it.

- (a) Why did the thumbtack move along with the magnet? [2 m]

- (b) What is the table top likely to be made of, iron, nickel or aluminium? [1m]

38. Ali uses two similar magnets A and B to find out which one can attract more iron pins in the set-up below.

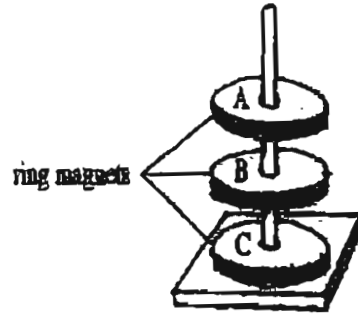


- (a) Which magnet will attract more iron pins? [1m]

- (b) Give a reason for your answer in (a). [2 m]

- (c) Later on, he removes the pins from the magnets. Then he places a piece of steel sheet between the two magnets and the pins. What do you think will happen? [2 m]

39. The diagram below showed three ring magnets. They 'floated' on top of one another.

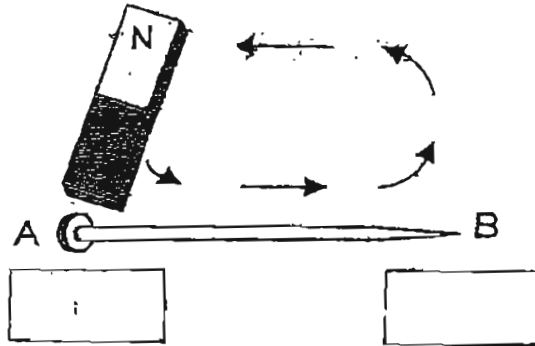


- (a) Give a reason why the magnets did not touch one another. [2 m]

- (b) The three ring magnets would touch one another if you flip one of them. Which magnet would you flip? [1m]

40. A bar magnet is used to stroke an iron nail in the direction as shown in the diagram below.

- (a) When the nail is magnetised, A and B will become poles. Write 'North' or 'South' in the boxes to indicate these poles. [2m]



- (b) The nail has become a _____ magnet. [1m]

Methodist Girls Primary School
Primary 3 Science SA1 Exams (2005)

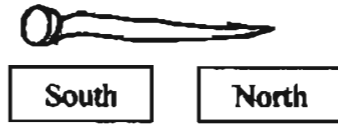
ExamSheet

Answer Sheets

31a.	X : Plants	Q1	Q2	Q3	Q4	Q5	Q6	Q7	Q8	Q9	Q10
	Y : Fungi	4	4	3	4	2	4	4	2	3	3
31b.	Group Y	Q11	Q12	Q13	Q14	Q15	Q16	Q17	Q18	Q19	Q20
		4	3	2	4	4	3	1	1	4	4
31c.	Spores	Q21	Q22	Q23	Q24	Q25	Q26	Q27	Q28	Q29	Q30
		1	3	3	3	1	3	1	1	1	2
32.	(i) coconut										
	(ii) bird's nest fern										
	(iii) lotus										
	(iv) hydrilla										
33	root, shoot, seed, C, leaves										
34a.	ruler										
34b.	safety pin										
34c.	elastic band										
34d.	eraser										
34e.	dresser										
34f.	cup										
35a.	woods										
35b.	rubber										
35c.	ceramics										
35d.	glass										
36a.	Ball A - cork										
36b.	A can float but the others sink.										
37a.	The face of a magnet can pass through the table attract the nail.										
37b.	Aluminium.										
38a.	Magnet A										
38b.	It is closer to the iron pins.										
38c.	The magnet cannot attract the iron pins anymore.										

39a. They were repelling each other.
39b. Magnet B.

40a.



40b. temporary