

841



RAFFLES GIRLS' PRIMARY SCHOOL

SEMESTRAL ASSESSMENT (1)

2005

Name : _____ Class: P3 _____ Index No: _____

12 May 2005

SCIENCE

Att: 1 hr

Your score out of 50 marks		
	Class	Level
Highest score		
Average score		
Parent's signature		

SECTION A (10 x 2 marks)

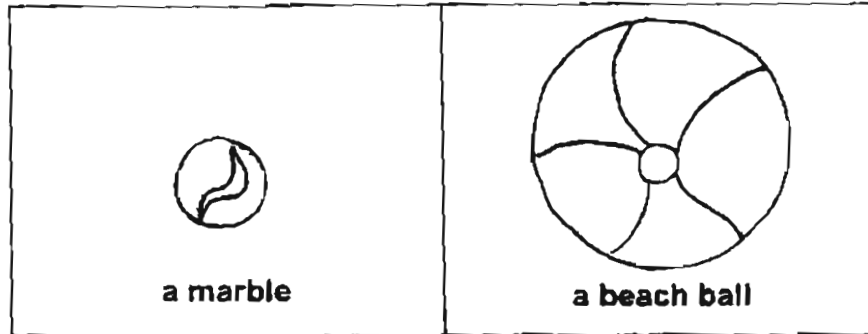
There are 10 questions in this section. Answer all of them. For each question, 4 suggested answers numbered 1, 2, 3 and 4 are given. Choose the most suitable answer and shade the correct oval on the Optical Answer Sheet (OAS).

1. Which of the following statements about living things are true?

- A. They can reproduce.
- B. They can make food.
- C. They can move from place to place.
- D. They respond to changes around them.

- (1) A and C only
- (2) A and D only
- (3) A, C and D only
- (4) A, B, C and D

2. Look at the objects shown below.

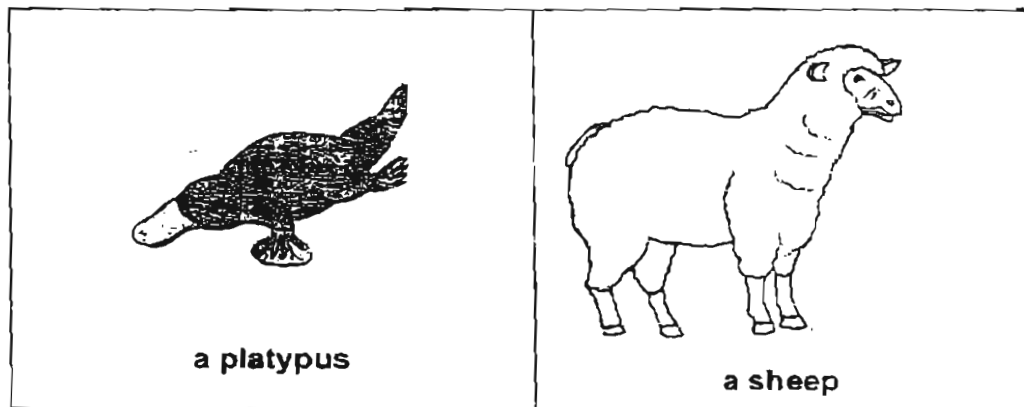


What is/are the similarity/similarities between both objects?

- A. Both have the same shape.
- B. Both are of the same size.
- C. Both are made of the same material.

- (1) A only
- (2) B only
- (3) A and B only
- (4) B and C only

3. Look at the pictures below.

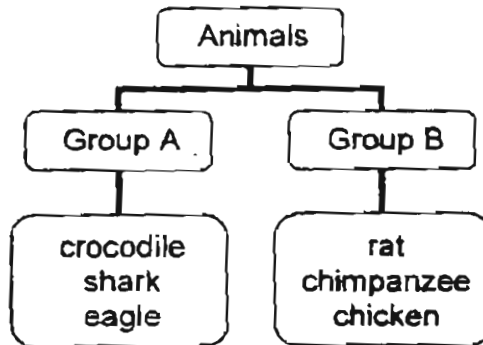


In what ways are they alike?

- A. They give birth to their young.
- B. They have hair on their bodies.
- C. They feed their young with milk.

- (1) A and B only
- (2) A and C only
- (3) B and C only
- (4) A, B and C

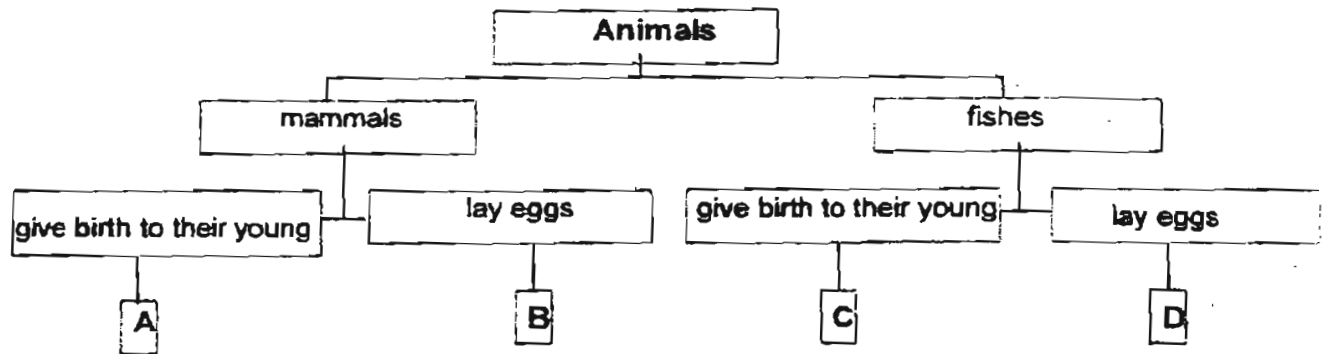
4. Study the chart below.



What are the correct headings for Group A and Group B?

	Group A	Group B
(1)	live in water	live on land
(2)	can swim	cannot swim
(3)	lay eggs	give birth to their young
(4)	animal eater	animal and plant eater

5. Look at the classification table below.



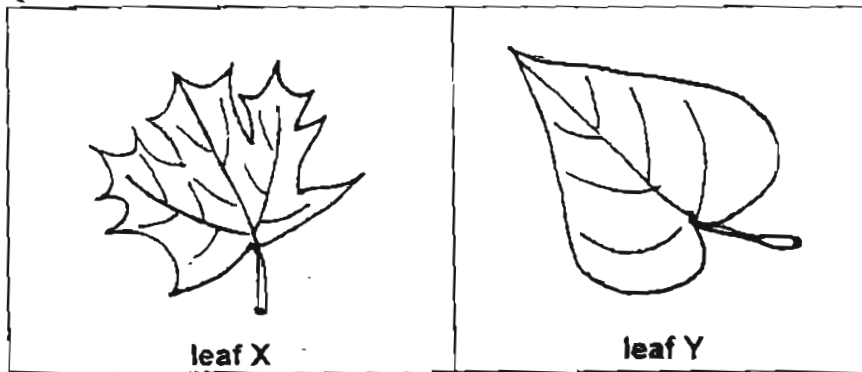
Which one of the following is the correct classification of the animals, A, B, C and D?

	A	B	C	D
(1)	whale	spiny anteater	goldfish	guppy
(2)	whale	spiny anteater	guppy	goldfish
(3)	spiny anteater	whale	guppy	goldfish
(4)	spiny anteater	whale	goldfish	guppy

6. Which one of the following statements is **false** about birds?

- (1) All birds can fly.
- (2) All birds lay eggs.
- (3) All birds have beaks.
- (4) All birds have feathers.

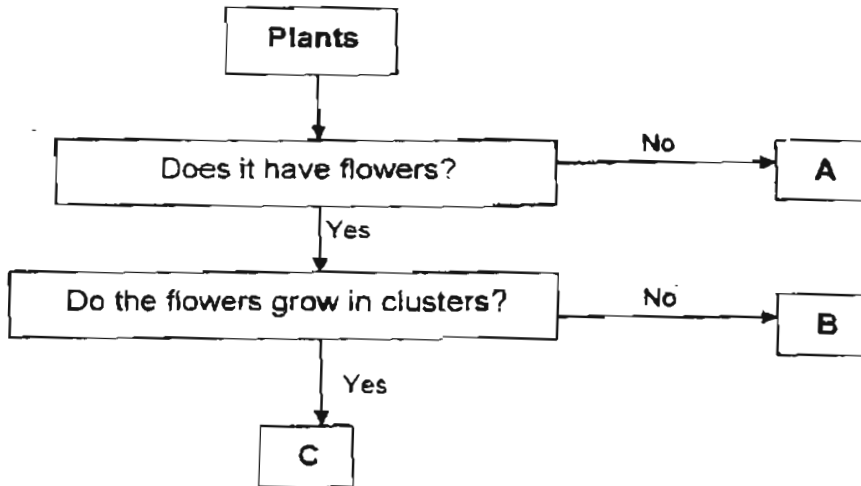
7. Look at the leaves shown below.



Identify the shapes of leaves X and Y.

	leaf X	leaf Y
(1)	palm-shaped	oval-shaped
(2)	heart-shaped	round-shaped
(3)	heart-shaped	palm-shaped
(4)	palm-shaped	heart-shaped

8. Look at the flow chart below.



Which one of the following represents correctly what the plants, A, B and C, are?

	A	B	C
(1)	moss	ixora	rose
(2)	rose	ixora	moss
(3)	ixora	moss	rose
(4)	moss	rose	ixora

5

9. Both toadstool and bird's nest fern _____.

- A. bear flowers
- B. do not bear flowers
- C. can photosynthesise
- D. cannot photosynthesise

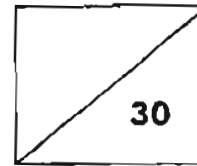
- (1) B only
- (2) D only
- (3) A and C only
- (4) B and D only

10. Which of the following statements about fungi are true?

- A. Fungi are not plants.
- B. Fungi reproduce by spores.
- C. Some fungi can be eaten by humans.
- D. Fungi feed on rotting plants and animals.

- (1) B and C only
- (2) A, B and C only
- (3) B, C and D only
- (4) A, B, C and D

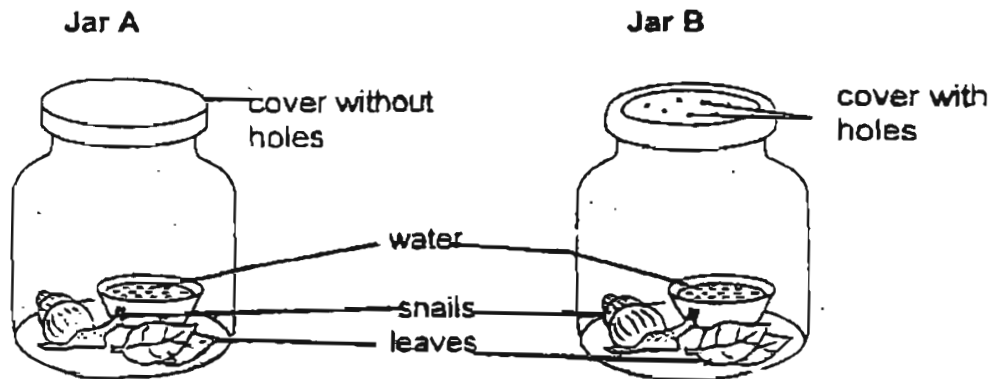
Name : _____ Class: P3 _____ Index No: _____



SECTION B (30 marks)

There are 15 questions in this section. Answer **all** of them. Write your answers clearly in the spaces provided.

11. Betty kept 2 snails in Jar A and Jar B as shown in the pictures below.



- (a) Which one of the snails can live longer? (1 m)

- (b) Explain your answer in (a). (1 m)

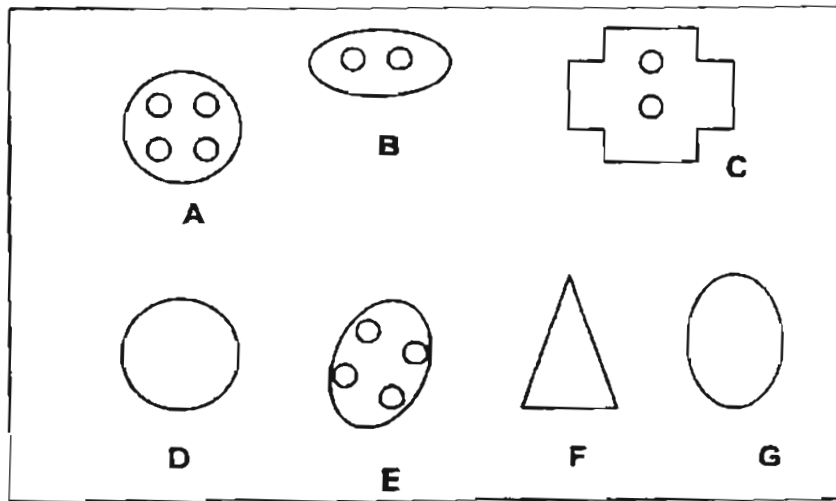
12. A sleeping stray cat awoke with a shock and ran away in fright when it heard a sudden clap of thunder. It ran straight into an oncoming car and was killed.

Write down only **two** characteristics of a living thing that were described from the **above** scene. (2 m)

Living things _____

and _____

13. Study the group of buttons below.



(a) Complete the following classification table using all the buttons shown in the box above by writing the letters, A, B, C, D, E, F and G only. The first one is done for you. (1½ m)

Group 1	Group 2	Group 3
A		

(b) State a difference between the buttons in Group 1 and those in Group 2. (½ m)

J

14. Some living things are classified into two groups, A and B, as shown below.

Group A	Group B
dog eagle	bracket fungus puff balls

- (a) Write down a suitable heading for Group A and Group B. (1 m)
- Group A : _____
- Group B : _____
- (b) Describe how the living things in Group B obtain their food. (1 m)

15. Look at the table below.

Group A	Group B	Group C	Group D
snake angelfish	orang utan cat	crab lobster	duck owl

- (a) The animals in Groups A, B, C and D shown above are classified according to their _____. (1 m)
- (b) Write the correct headings for Group A and Group C. (1 m)
- Group A : Animals with _____
- Group C : Animals with _____

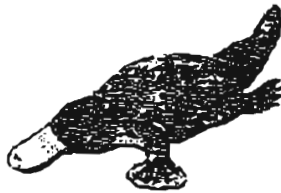
16. The following are a list of animals and they way they move.
 - Match them correctly. (2 m)

ladybird	♦	hopping and flying
house lizard	♦	crawling and swimming
sparrow	♦	crawling and flying
prawn	♦	running and crawling

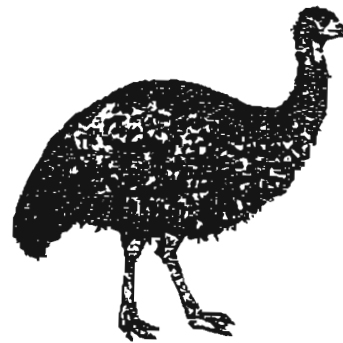
17. The animals below can be classified into two groups, A and B.



parrot



platypus



emu



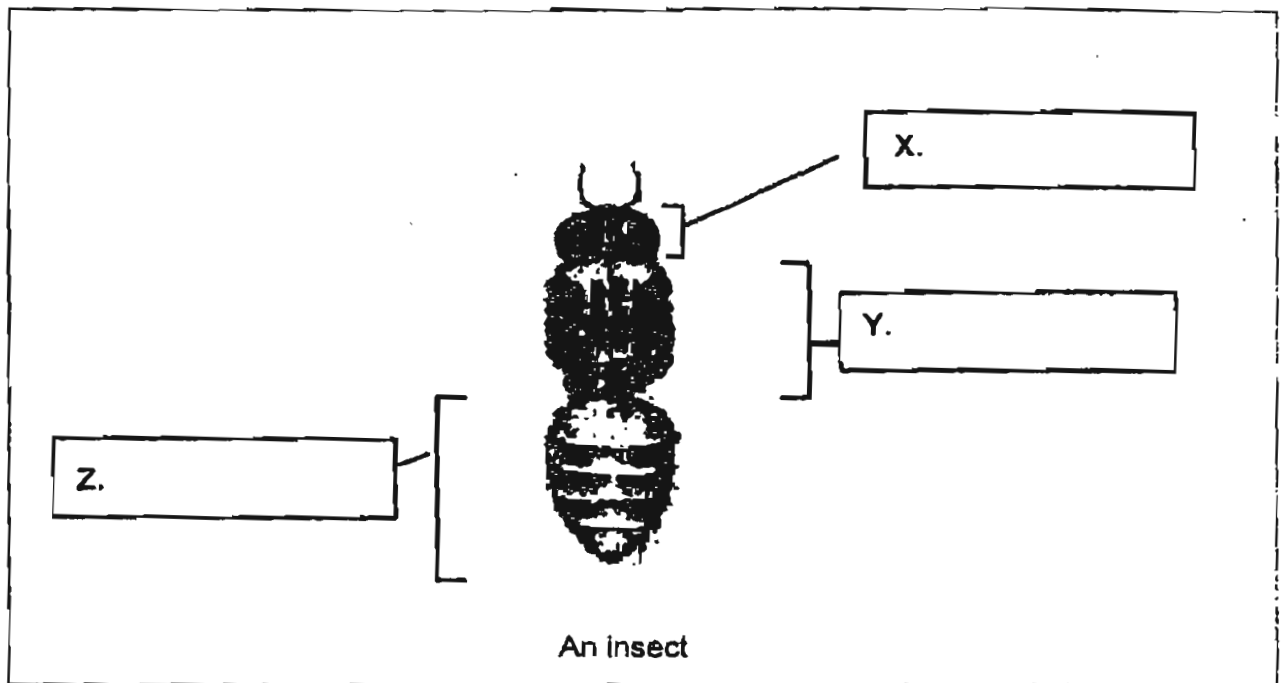
penguin

- (a) Complete the table below using the names of the animals above. (1 m)

Group A	Group B
chicken	bat

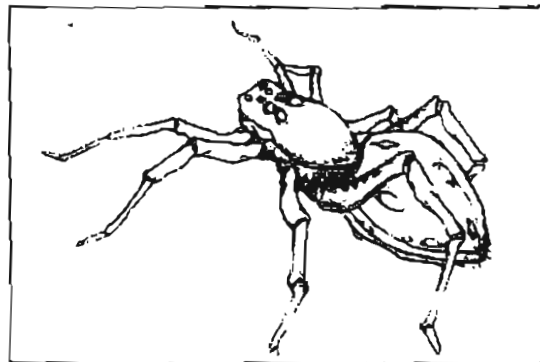
- (b) Name one characteristic of the animals in Group A. (1 m)

18. Look at the picture of an insect with its legs and wings removed as shown below.



- (a) Label the body parts, X, Y and Z, of the insect in the boxes provided. (1 ½ m)

Look at the Animal P below.

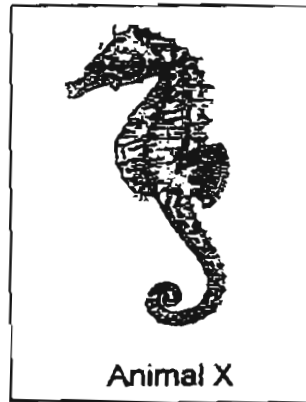


Animal P

- (b) Is Animal P an insect? (½ m)

- (c) Give a reason for your answer in (b). (½ m)

19. Look at Animal X below.

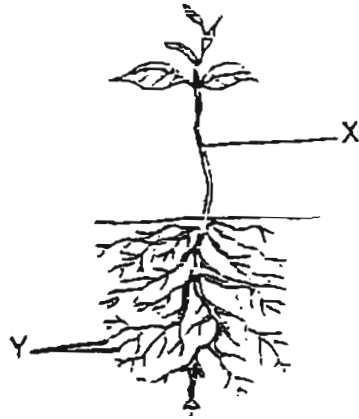


Anita saw Animal X and exclaimed, "It is a fish!"

- (a) Give a reason why Anita said so. (1 m)

- (b) Name a part of animal X that helps it to move about. (½ m)

20. Look at the plant below.



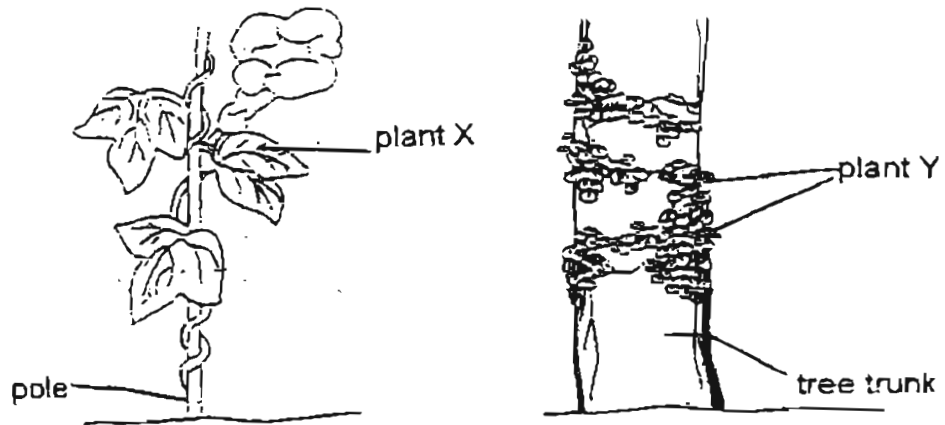
(a) Give **one** reason why "X" is useful to the plant. (1 m)

(b) Give **one** reason why "Y" are useful to the plant. (1 m)

21. Complete the table by giving the differences between the plants. (2 m)

	Hibiscus plant	water lily plant
place in which it is found		
edge of its leaf		

22. Look at the plants, X and Y, shown below.

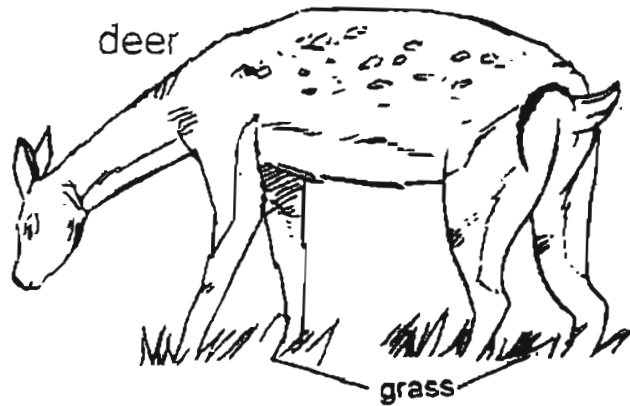


Based only on what you can see from the picture above,

- (a) state one similarity between plant X and plant Y. (1 m)
(Do not compare size or the shape and size of the leaves.)

- (b) What is the function of the pole and the tree trunk? (1 m)

23. Study the picture below.



(a) State one way how the grass depends on the deer. (1 m)

(b) State one way how the deer depends on the grass. (1 m)

24. Write 'T' for **true** statements or 'F' for **false** statements in the boxes provided. (2 m)

(a)	All fungi are harmful because they cause diseases to plants and animals.	
(b)	Bacteria and fungi belong to the same group of living things.	
(c)	Besides warmth and water, fungi need air in order to live.	
(d)	All fungi have chlorophyll.	

25. Mary carried out an experiment using 3 identical slices of bread. These slices of bread had undergone some treatment as shown in the table below.

Bread	Treatment done to the bread
A	It was put into a plastic bag with some water.
B	It was toasted and put on a plate.
C	It was put under a hot sun.

- (a) Which slice of bread is most likely to become mouldy first? (1 m)

- (b) Explain your answer in (a). (1 m)

-END OF PAPER-

Setters: Ms Aishah A
Ms Haslina H
Mdm Farhana H

2005 P3 SA1 Science

Setters: Ms Aisha
Ms Haslina
Mdm Farhana

ANSWER KEY

Section A (10 x 2 marks)

1.	2
2.	1
3.	3
4.	4
5.	2

6.	1
7.	4
8.	4
9.	1
10.	4

Section B (30 marks)

No.	Marks	Answers	Remarks																								
11a	1	Jar B.																									
b	1	Snail /Living thing needs air, water and food to survive/stay alive.	No marks for Jar B has holes.																								
12	2	<u>Any possible 2</u> - move by themselves - respond to changes around them - die																									
13a	1½	<p><u>Option 1</u></p> <table border="1"> <tr> <th>Group 1</th> <th>Group 2</th> <th>Group 3</th> </tr> <tr> <td>A</td> <td>B</td> <td>D</td> </tr> <tr> <td>E</td> <td>C</td> <td>F</td> </tr> <tr> <td></td> <td></td> <td>G</td> </tr> </table> <p>OR</p> <p><u>Option 2</u></p> <table border="1"> <tr> <th>Group 1</th> <th>Group 2</th> <th>Group 3</th> </tr> <tr> <td>A</td> <td>D</td> <td>B</td> </tr> <tr> <td>E</td> <td>F</td> <td>C</td> </tr> <tr> <td></td> <td>G</td> <td></td> </tr> </table>	Group 1	Group 2	Group 3	A	B	D	E	C	F			G	Group 1	Group 2	Group 3	A	D	B	E	F	C		G		According to the numbers of button. ½ m for each correct group.
Group 1	Group 2	Group 3																									
A	B	D																									
E	C	F																									
		G																									
Group 1	Group 2	Group 3																									
A	D	B																									
E	F	C																									
	G																										
b	½	<p><u>Option 1</u> Buttons in Group 1 has 4 holes but buttons in Group 2 has 2 holes.</p> <p>OR</p> <p><u>Option 2</u> Buttons in Group 1 has 4 holes but buttons in Group 2 has none.</p>	Answers depend on 13(a). If 13(a) is wrong, 13(b) is also marked wrong.																								
14a	1	Group A: Animals Group B: Fungi	- ½ m for wrong spelling																								
b	1	Living things in Group B <u>feed on decaying things.</u>																									
15a	1	outer coverings / body coverings	-½ m for wrong spelling																								
b	1	Group A: Animals with <u>scales</u> Group B: Animals with <u>shell</u>	½ m awarded for any wrong spelling of																								

			scales and shell.									
No.	Marks	Answers	Remarks									
16	2	ladybird hopping and flying house lizard crawling and swimming sparrow crawling and flying prawn running and crawling										
17a	1	<table border="1"> <thead> <tr> <th>Group A</th> <th>Group B</th> </tr> </thead> <tbody> <tr> <td>chicken emu penguin parrot</td> <td>bat platypus</td> </tr> </tbody> </table>	Group A	Group B	chicken emu penguin parrot	bat platypus	½ m awarded for any 2 correct answers					
Group A	Group B											
chicken emu penguin parrot	bat platypus											
b	1	(i) They have beaks. (ii) They have a pair of wings. OR They have two legs. OR They lay eggs. OR They have feathers.	½ m each They can fly (0 m)									
18a	1 ½	X. head Y. thorax Z. abdomen	0 marks for wrong spelling									
b	½	No										
c	½	It has 8 legs OR 2 body parts.										
19a	1	Animal X has fins/ scales.	½ m. for each correct answer 'Gills to help them breathe' is not acceptable									
b	½	Its fin(s)/tail										
20a	1	Any 1 possible X holds the plant upright. X supports the <u>branches</u> (½ m) and <u>leaves</u> (½ m). OR X transports water / mineral salts from the roots to the rest of the plant.										
b	1	Any 1 possible Y holds the plants firmly in the ground. Y take in water and mineral salts for the plant.										
21	2	<table border="1"> <thead> <tr> <th></th> <th>hibiscus plant</th> <th>water lily plant</th> </tr> </thead> <tbody> <tr> <td>places in which it is found</td> <td>garden / land</td> <td>pond / water</td> </tr> <tr> <td>edge of its leaf</td> <td>Jagged/ toothed</td> <td>Jagged/ toothed</td> </tr> </tbody> </table>		hibiscus plant	water lily plant	places in which it is found	garden / land	pond / water	edge of its leaf	Jagged/ toothed	Jagged/ toothed	½ m each 0 m for wrong spelling
	hibiscus plant	water lily plant										
places in which it is found	garden / land	pond / water										
edge of its leaf	Jagged/ toothed	Jagged/ toothed										

No.	Marks	Answers	Remarks
22a	1	Any 1 possible Both plant X and plant Y - have weak stems. - need support to climb. - cannot stand upright on its own.	
b	1	They are used as <u>support for the plants</u> (½ m) to stand upright. (½ m)	
23a	1	Plants need the <u>animals' droppings</u> (½ m) to <u>fertilise the soil</u> (½ m) OR Animals help plant to <u>pollinate</u> . OR Animals give plants <u>carbon dioxide</u> (½ m) to <u>make food/photosynthesis</u> (½ m)	-½ m if misspell pollinate
b	1	Some animals are <u>plant eaters</u> OR They obtain energy from the food / plants that they eat.	
24	2	a) F b) F c) T d) F	
25a	1	Bread A	
b	1	<u>Mould/fungi</u> (½ m) need <u>moisture/ water</u> (½ m) to grow.	No marks for white/yellow/green/ black patches appeared on the bread.

- END OF PAPER -