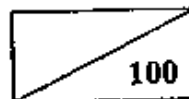


**NAN HUA PRIMARY SCHOOL**  
**MID-YEAR EXAMINATION - 2006**  
**PRIMARY THREE**  
**SCIENCE**



Name : \_\_\_\_\_ ( )

Class : Pr 3 \_\_\_\_\_

Date : 11<sup>th</sup> May 2006

Duration : 1 h 30 min

\_\_\_\_\_  
Parent's Signature

**SECTION A (30x2 marks)**

Each question is followed by four options. Choose the correct answer and write its number in the brackets provided.

1. Which of the following can reproduce itself ?

- A. stone
- B. moth
- C. toy train
- D. morning glory

1. A only

3. A and C only

2. B only

4. B and D only

( )

2. Which one of the following cannot move by itself ?



(1)



(2)



(3)



(4)

( )

3. Which one of the statements about non-living things is true ?

1. They need food to survive.
2. They need water.
3. They do not breathe.
4. They can reproduce themselves.

( )

4. Which of the products listed below is/are made from things that was/were once alive ?

- A. feather duster
- B. metal ruler
- C. leather handbag
- D. paper

1. A only
3. B and C

2. B only
4. A, C and D

( )

5. A plant is put into a cardboard box as shown below. The box is then placed in the garden. What will happen to the plant in a few days ?



1. It continues to grow towards the top of the box.
2. It will grow towards the hole to obtain light.
3. It will grow towards the hole to get air.
4. It will grow towards the pot to get water.

( )

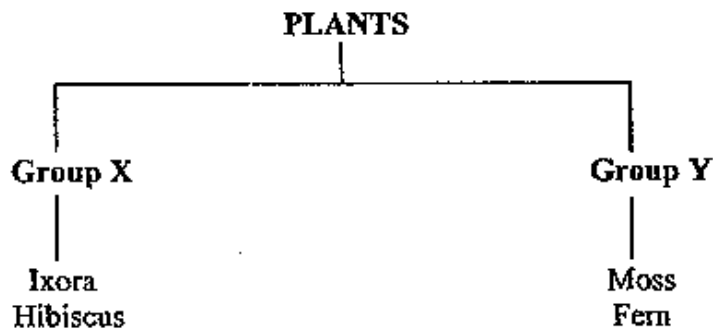
6. The diagram below shows some goldfish in a fish bowl. The fish are swimming near the surface of the water. What can be done to ensure that the fish will stay alive and not remain swimming at the surface of the water?



1. Place some sand in the water.
2. Put the fish bowl near the window.
3. Fix an air pump in the fish bowl.
4. Cover the fish bowl with an airtight cover.

( )

7. Study the classification table below. How are the plants grouped?



	<b>Group X</b>	<b>Group Y</b>
1	Green plants	Non-green plants
2	Edible plants	Non-edible Plants
3	Flowering Plants	Non-flowering plants
4	Poisonous Plants	Non-poisonous Plants

( )

8. Which one of the following statements is **not true** ?

1. Penicillium can be made into a useful drug.
2. Mushrooms can make their own food.
3. Yeast is used in making bread.
4. Amoeba is a micro-organism.

( )

9. The living things shown below can be classified together as they \_\_\_\_\_.



mushroom



mould



fern



bracket fungus

1. bear flowers
2. only live on trees
3. have chlorophyll
4. reproduce from spores

( )

10. Which one of these plants is a non-flowering plant ?

1. hair-cup moss
2. allamanda
3. orchid
4. daisy

( )

11. Which one of the statements about micro-organisms is true ?

1. Micro-organisms are not useful to man.
2. Micro-organisms are only found in water.
3. Micro-organisms can be seen through a microscope.
4. Micro-organisms can be seen with the naked eyes.

( )

12. A zebra and a whale are similar as they \_\_\_\_\_.

1. move in the same way
2. live in the same habitat
3. eat the same type of food
4. give birth to their young alive

( )

13. Which one of the following is not an insect ?



Grasshopper  
(1)



Bee  
(2)



Spider  
(3)



Cockroach  
(4)

( )

14. Which characteristics about the two animals shown below is correct ?



platypus



monkey

1. Both have four limbs each.
2. Both reproduce by laying eggs.
3. Both are able to live in the sea.
4. Both have flippers to help them to swim.

( )

15. The table below shows the characteristics of four animals, D, E, F and G. Which animal is most likely to be a dragonfly ?

Animal	Number of feelers	Number of wings	Number of legs
D	0	2	2
E	2	0	8
F	2	4	6
G	2	0	6

1. D
2. E
3. F
4. G

( )

16. An animal has the following characteristics:

- It lives in the water.
- It has fins on its body.
- It breathes with its gills.

The animal is a \_\_\_\_\_.

1. frog
2. prawn
3. fish
4. turtle

( )

17. Which of these objects is most likely made of one material only ?



Comb

(1)



Scissors

(2)



Spectacles

(3)



Computer

(4)

( )

18. Which of the following are natural materials ?

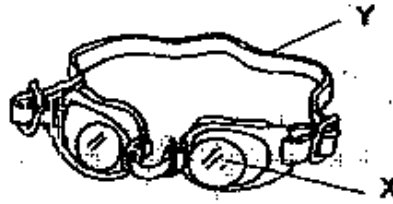
- A. Latex
- B. Wood
- C. Cotton
- D. Plastics

1. A, B and C only
3. A, C and D only

2. A and C only
4. A, B, C and D

( )

19. The picture below shows a pair of goggles. What are X and Y likely to be made of?



	X	Y
1	Glass	Metal
2	Paper	Rubber
3	Plastic	Rubber
4	Rubber	Plastic

( )

20. Plastic is used to make water hose and electrical cables because it is \_\_\_\_\_.

- A. durable
- B. brittle
- C. flexible
- D. hard

1. A only

2. B only

3. A and C only

4. C and D only

( )

21. \_\_\_\_\_ is suitable for making fishing lines as it is strong and durable.

- 1. Cotton
- 2. Copper
- 3. Nylon
- 4. Rubber

( )

22. Tommy threw a table-tennis ball, a marble, a sponge and a 10-cent coin into a pail of water for ten minutes. Which object/objects would most likely float in the water ?

- A. table-tennis ball
- B. marble
- C. sponge
- D. 10-cent coin

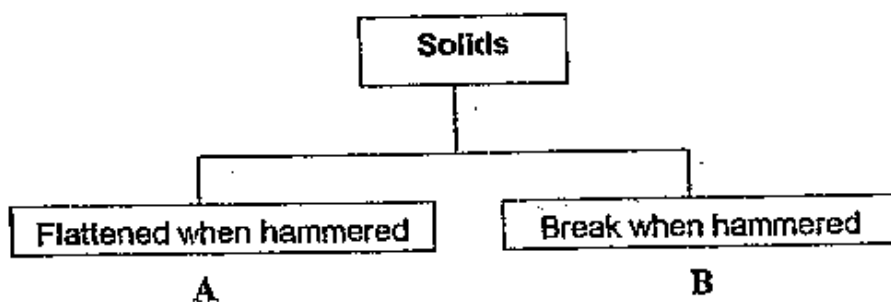
- 1. A only
  - 2. A and C only
  - 3. B and C only
  - 4. C and D only
- ( )

23. Which of the following properties are important in choosing a material for a raincoat ?

- A. Flexible
- B. Hard
- C. Light
- D. Waterproof

- 1. A only
  - 2. B and D only
  - 3. C only
  - 4. A, C and D only
- ( )

24. Study the classification table below. What are A and B ?

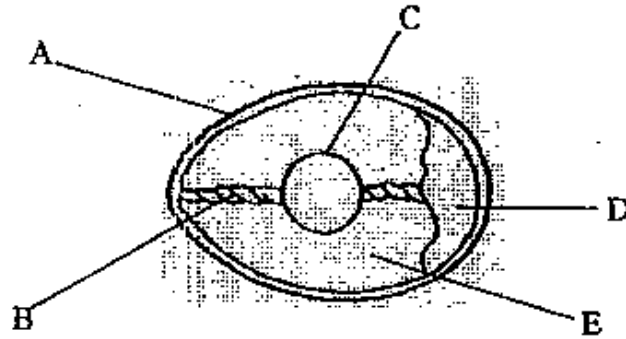


	A	B
1	clay flower pot	iron nail
2	iron nail	metal ruler
3	a ball of plasticine	ceramic vase
4	glass bowl	\$1 coin

( )



25. The diagram below shows a fertilized hen's egg. Which part/parts of the egg provides/provide food for the developing chick ?



1. A only  
 2. B only  
 3. B and D  
 4. C and E

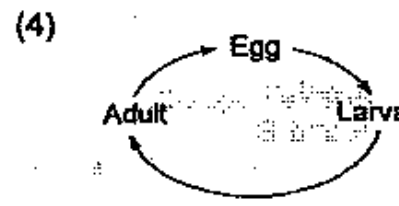
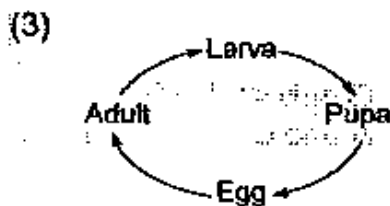
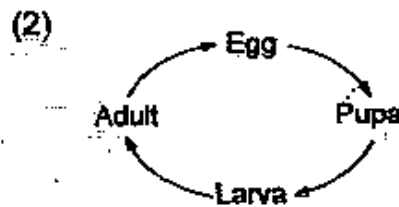
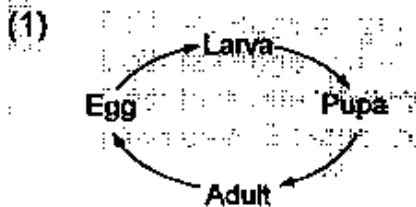
( )

26. Which of the following statements about the frog is not true ?

1. The young of a frog and an adult frog do not look alike.  
 2. The frogs' eggs are covered by a jelly-like substance.  
 3. There are four stages in its life cycle.  
 4. The frog lays eggs in the water.

( )

27. Which one of the following diagrams below shows the life cycle of a butterfly ?



28. It takes about \_\_\_\_\_ for a fertilized egg to hatch into a chick.

1. 7 days
2. 21 days
3. 3 months
4. 6 months

( )

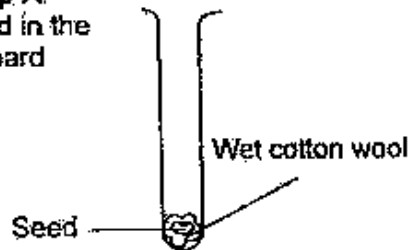
29. Which of the following statements is not true ?

1. The caterpillar grows fast.
2. The caterpillar eats very little food.
3. The caterpillar moults several times.
4. The chrysalis stops moving and eating.

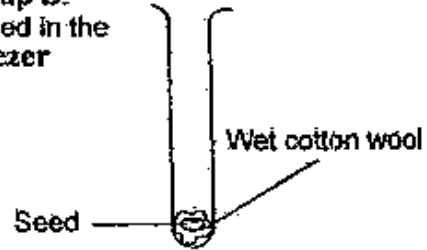
( )

30. Study the set-ups for an experiment shown below. In which set-up would the seed germinate ?

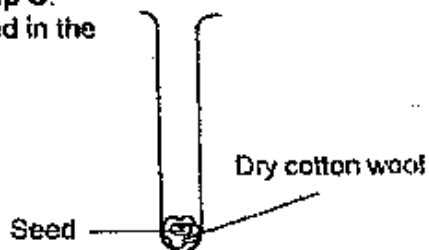
**Set-up A:**  
Placed in the cupboard



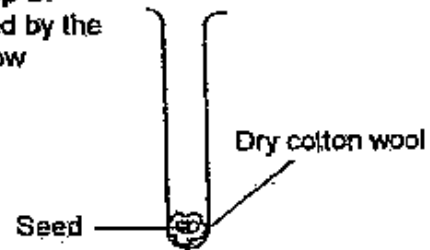
**Set-up B:**  
Placed in the freezer



**Set-up C:**  
Placed in the sun



**Set-up D:**  
Placed by the window



1. Set-up A
3. Set-up C

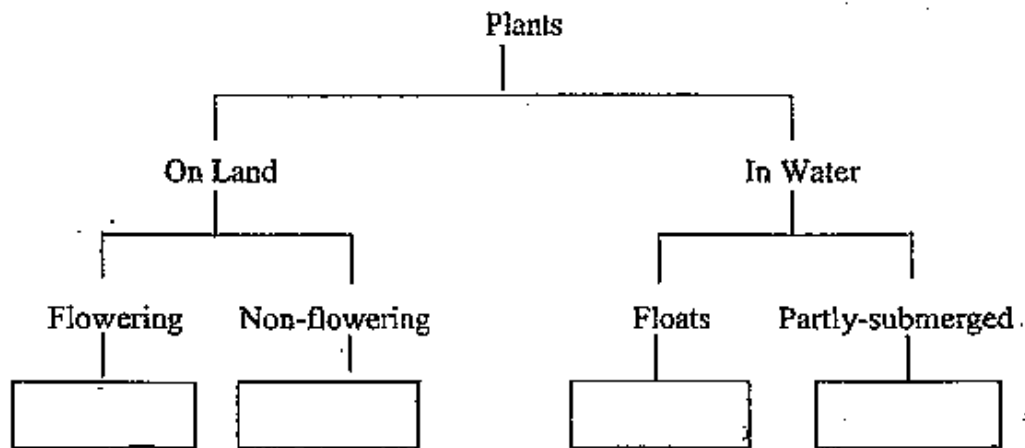
2. Set-up B
4. Set-up D

( )

**SECTION B (40 marks)**

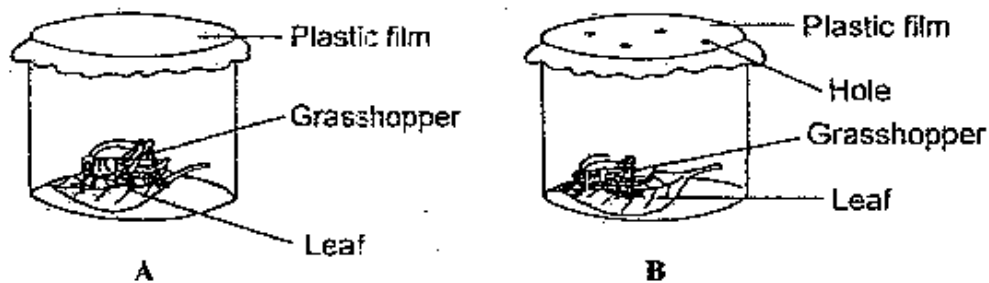
Read the questions carefully. Answer all the questions.

31. The diagram below shows a classification table. Put these plants in the correct boxes in the table below : rose, lotus, fern and duckweed



(4m)

32. Ken placed two grasshoppers in two different containers as shown in the diagram below. The two containers are sealed with a plastic film. In which of the containers would the grasshopper die after a few days ?



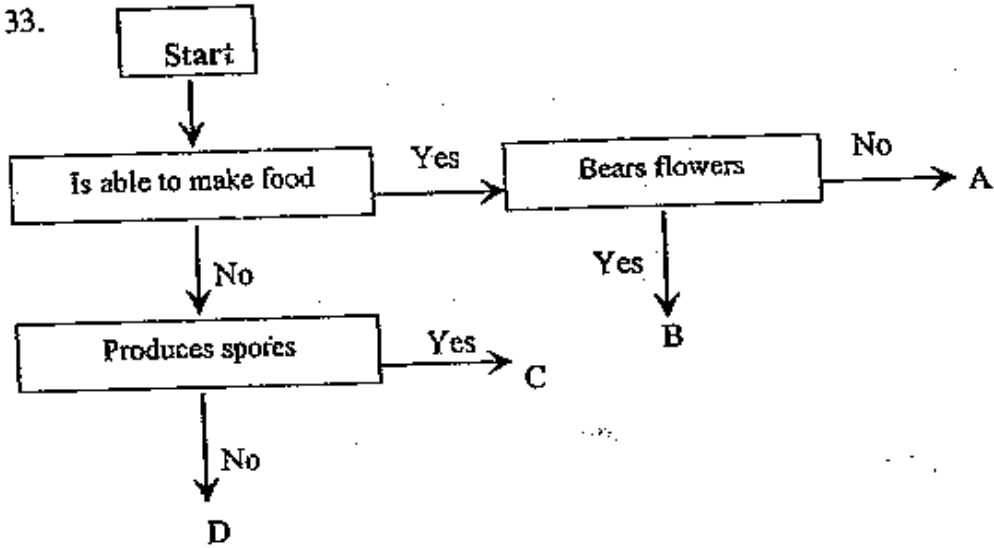
- a. In which of the containers would the grasshopper die after a few days ?

\_\_\_\_\_ (1m)

- b. Explain why this would happen.

\_\_\_\_\_ (1m)

33.



Where would you put the following living things , A, B, C or D ?

- a. Mushroom \_\_\_\_\_
- b. Bacteria \_\_\_\_\_
- c. Tree Fern \_\_\_\_\_
- d. Frangipani \_\_\_\_\_

(4m)

34. Study the classification table of animals shown below :  
How do you group these animals ?

Group A	Group B	Group C	Group D
giraffe	ostrich	dragonfly	tilapia
tiger	sparrow	housefly	guppy

Give a suitable heading for each group. Group A has been done for you

Group A : Mammals \_\_\_\_\_

Group B : \_\_\_\_\_

Group C : \_\_\_\_\_

Group D : \_\_\_\_\_

(3m)

35. The housefly is considered to be an insect because it has a pair of wings, a segmented body that is made up of \_\_\_\_\_ parts, a pair of \_\_\_\_\_ and \_\_\_\_\_ legs. (3m)

36. Make comparisons between the dolphin and the eagle and write the answers in the table given below.



dolphin



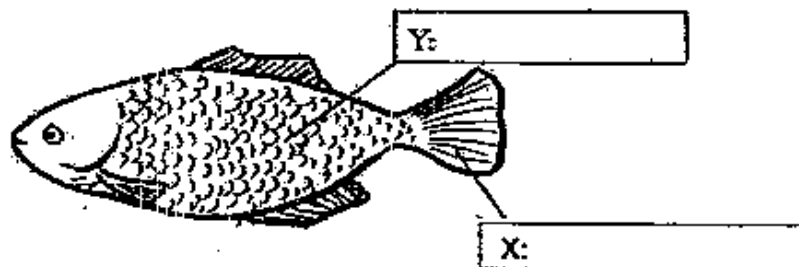
eagle

	Dolphin	Eagle
Body covering		
Reproduction		
Movement		

(3m)

37a. Write down the parts of the fish in the boxes in the diagram below.

(2m)



b. State the function of X and Y.

X: \_\_\_\_\_

Y: \_\_\_\_\_

(2m)

38.



a. Name a suitable material that is usually used to make Part X of the pot.

(1m)

b. Give a good reason for your choice of material.

(1m)

39. Draw lines to match the objects to the materials they are mainly made of. (4m)

**Objects**



Wok



Shirt



Brick



Tyre

**Materials**

• Clay

• Metal

• Cotton

• Rubber

40a. The two things added to latex to make it into rubber are

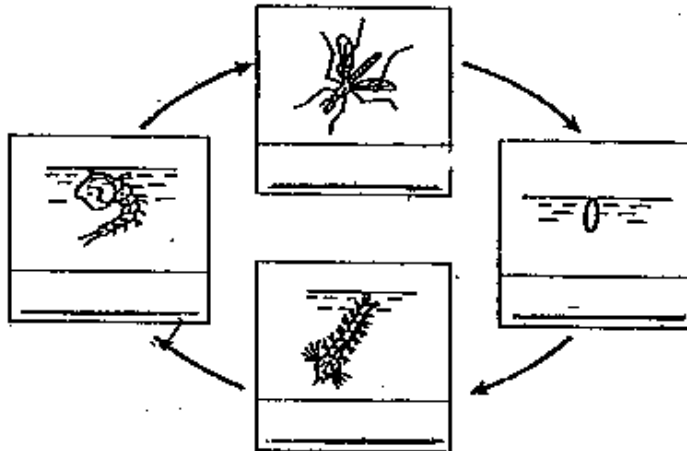
\_\_\_\_\_ and \_\_\_\_\_. (1m)

b. ~~Why~~ is titanium used to make artificial hip joints?

\_\_\_\_\_  
(1m)

41. The diagram below shows the life cycle of a mosquito.

a. Fill in the blanks in the diagram to show the various stages of its life cycle. (2m)



b. This insect is a pest as it \_\_\_\_\_

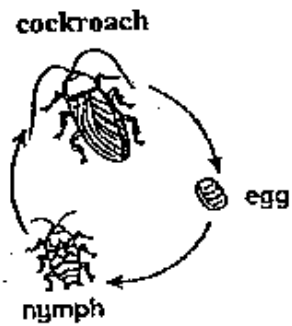
\_\_\_\_\_  
(1m)

c. At which stage of its life cycle is it **not** easy to kill it? Why is this so?

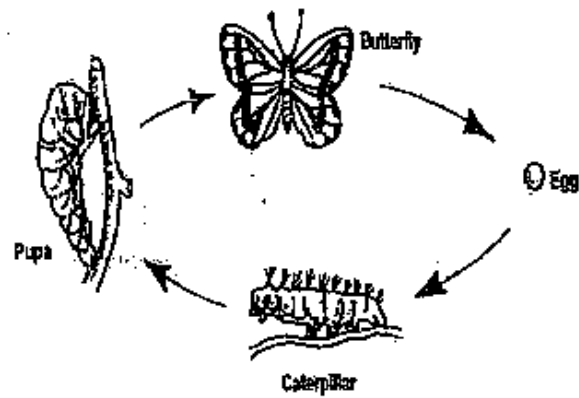
\_\_\_\_\_  
(2m)

42. Study the life cycles of the butterfly and the cockroach below.

**LIFE CYCLE OF THE COCKROACH**



**LIFE CYCLE OF THE BUTTERFLY**



State 2 differences between their life cycles.  
(Do not compare their size, habitat and colour)

a) \_\_\_\_\_  
\_\_\_\_\_ (2m)

b) \_\_\_\_\_  
\_\_\_\_\_ (2m)

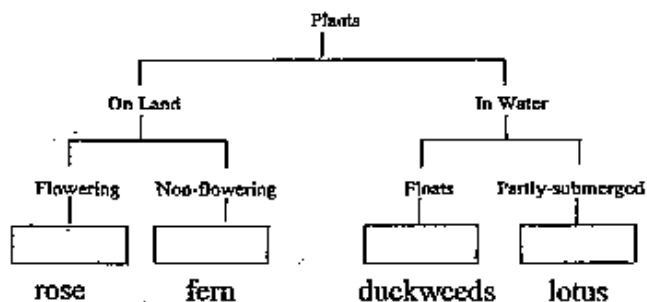
~End of Paper~



**Answer Sheets**  
**Nan Hua Pri 3 SAI / 2006 Science**

- |       |       |       |       |       |       |
|-------|-------|-------|-------|-------|-------|
| 1) 4  | 2) 2  | 3) 3  | 4) 4  | 5) 2  | 6) 3  |
| 7) 3  | 8) 2  | 9) 4  | 10) 1 | 11) 3 | 12) 4 |
| 13) 3 | 14) 1 | 15) 3 | 16) 3 | 17) 1 | 18) 1 |
| 19) 3 | 20) 3 | 21) 3 | 22) 2 | 23) 4 | 24) 3 |
| 25) 4 | 26) 3 | 27) 1 | 28) 2 | 29) 2 | 30) 1 |

Q31.



- Q32. a) Container A would die after a few days.  
b) It can't breathe. It needs air.

- Q33. a) Mushroom : C  
b) Bacteria : D  
c) Tree Fern : A  
d) Frangipani : B

- Q34. Group A : Mammals  
Group B : Birds  
Group C : Insects  
Group D : Fishes

- Q35. The housefly is considered to be an insect because it has a pair of wings, a segmented body that is made up of three parts, a pair of feelers and six legs.

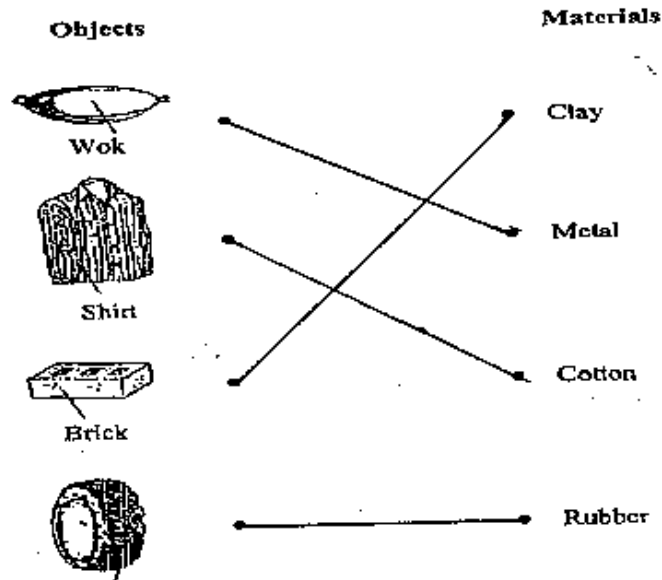
Q36.

	Dolphin	Eagle
Body covering	hair	feather
Reproduction	give birth	lay eggs
Movement	swim	fly

- Q37. a) Y : scales  
X : tail  
b) X : the tails helps the fish to swim  
Y : to protect its body

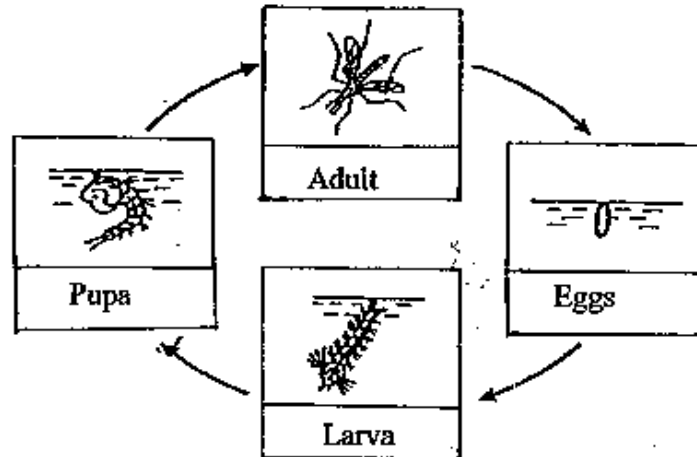
- Q38. a) metal  
b) it allows heat to pass through.

Q39.



- Q40. a) The two things added to latex to make it into rubber are water and acid.  
b) It is strong

Q41a.



Q41b. This insect is a pest as it suck our blood.

Q41c. Adult stage. Its has wings and can fly.

Q42a. The butterfly have 4 stages of life cycle, the cockroach have 3 stages of life cycle.

Q42b. The nymph resemble their parents but caterpillar does not.