

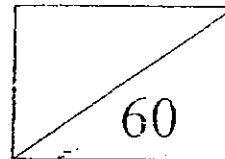
KONG HWA SCHOOL
SEMESTRAL ASSESSMENT ONE 2008
SCIENCE
PRIMARY 3

Name: _____ (.)

Class: Primary 3/ _____

Date : 9 May 2008

Marks



Parent's Signature: _____

BOOKLET A

30 MULTIPLE CHOICE QUESTIONS

60 MARKS

Total time for Booklets A and B: 1 h 30 mins

DO NOT LOOK AT THE QUESTIONS UNTIL YOU ARE TOLD TO DO SO.

FOLLOW ALL INSTRUCTIONS CAREFULLY.

DO NOT WASTE TIME. IF A QUESTION IS DIFFICULT FOR YOU, GO ON TO
THE NEXT ONE.

REMEMBER TO ANSWER ALL QUESTIONS.

Section A (2 x 30 marks)

For each question from 1 to 30, shade your answers on the OAS (Optical Answer Sheet) provided.

1. Which one of the following is not a living thing?

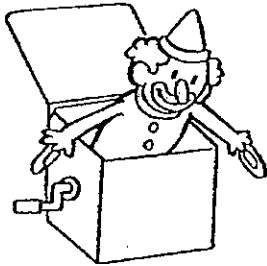
(1)



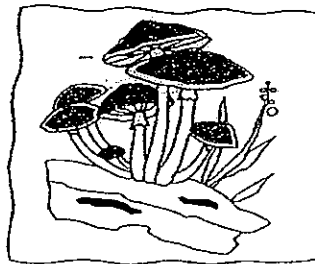
(2)



(3)



(4)



()

2. A fish uses its _____ to take in air in the water.

- (1) tail
- (2) scales
- (3) fins
- (4) gills

()

3. Study the table carefully.

Group A	Group B	Group C
Tiger	Guppy	Wasp
Whale	Goldfish	Beetle
Platypus	Swordtail	Housefly

How are the animals grouped?

	Group A	Group B	Group C
(1)	mammal	bird	fish
(2)	bird	mammal	insect
(3)	mammal	fish	insect
(4)	fish	insect	mammal

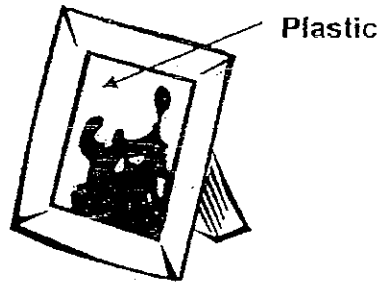
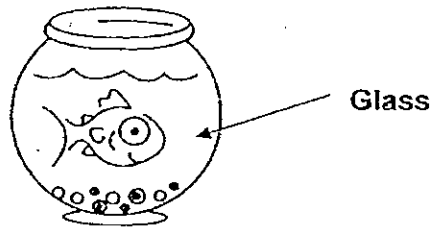
()

4. Animal X has a beak and feathers. It is a _____.

- (1) a kitten
- (2) a mosquito
- (3) a bee
- (4) a sparrow

()

5. The pictures below show a glass bowl and a photo frame. Which one of the properties listed below is shared by glass and plastic which makes them suitable for use in the above items?



- (1) both the glass and plastic are flexible
- (2) both the glass and plastic are transparent
- (3) both the glass and plastic are light
- (4) both the glass and plastic are strong

()

6. Which statement below is **not true** of animals which move?

- (1) They move to avoid danger.
- (2) They move to look for a mate.
- (3) They move to visit the other animals.
- (4) They move to look for shelter.

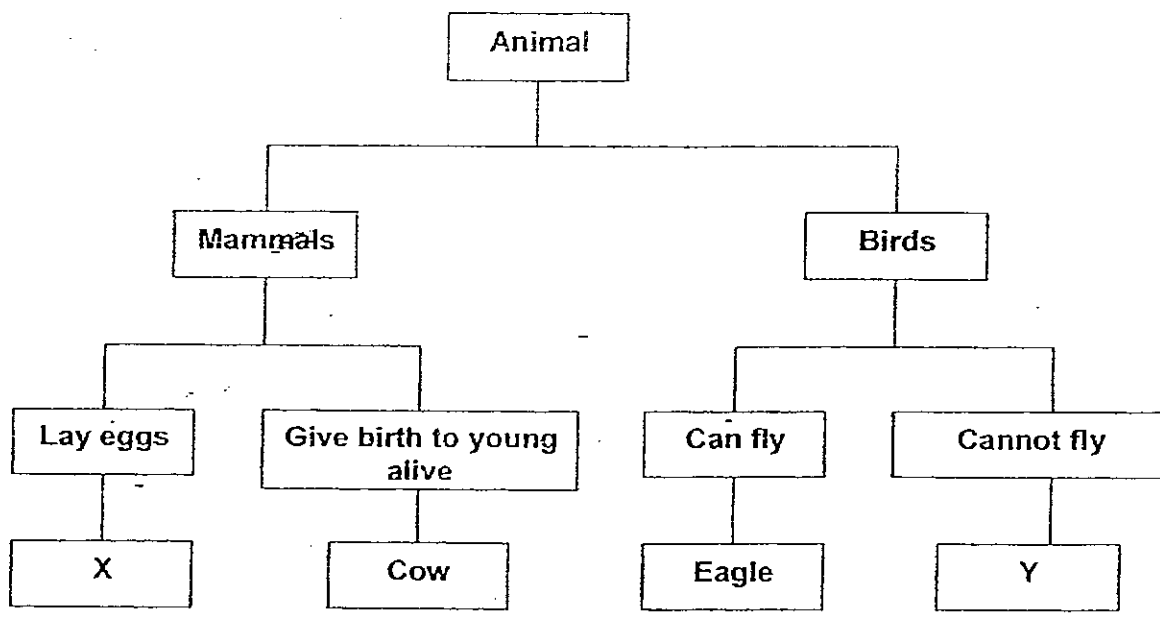
()

7. Why is an aircraft made of metal?

- (1) Metal is elastic.
- (2) Metal is strong and durable.
- (3) Metal is cheap.
- (4) Metal is waterproof.

()

8. Study the classification table below and answer the following question.



What are Animal X and Y most likely to be?

- | Animal X | Animal Y |
|--------------------|----------|
| (1) Spiny Anteater | Penguin |
| (2) Bear | Flamingo |
| (3) Platypus | Parrot |
| (4) Duck | Emu |

()

9. Zeff dropped a bottle. It fell to the ground and shattered into pieces.
Which of the following is likely to be the material?

- (1) wood
- (2) plastic
- (3) rubber
- (4) glass

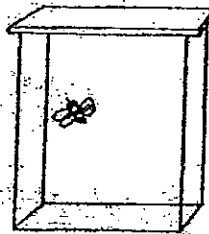
()

10. Which one of the following objects is made from rubber?

- (1) storybook
- (2) eraser
- (3) coin
- (4) plate

()

11. Gregory placed a housefly in a sealed glass container. Three days later, he opened the container and found that the housefly was dead. Which of the following explains its death?



- (1) There is no light.
- (2) Air in the container is used up.
- (3) It was lonely.
- (4) There is little food.

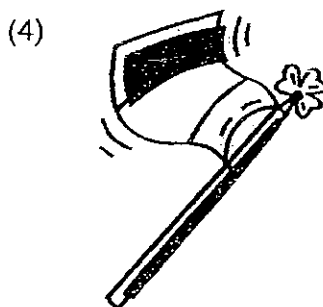
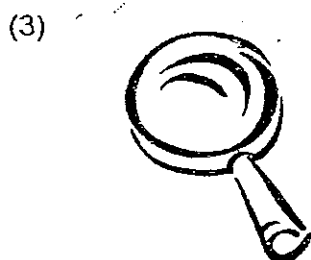
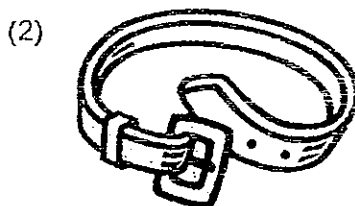
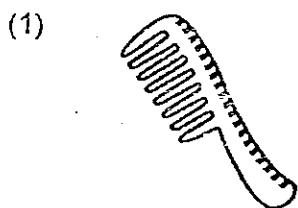
()

12. Joshua waved his hand near Dayna's face. As a result Dayna blinked her eyes. What does Dayna's reaction tell us?

- (1) Living things reproduce.
- (2) Living things grow.
- (3) Living things respond.
- (4) Living things are alive.

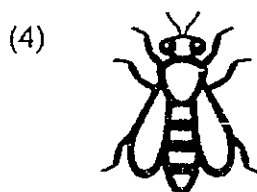
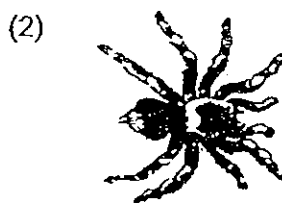
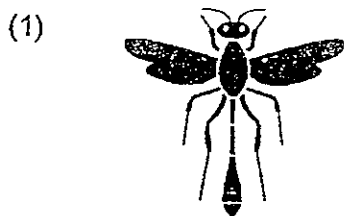
()

13. Which one of the objects is made of one type of material only?



()

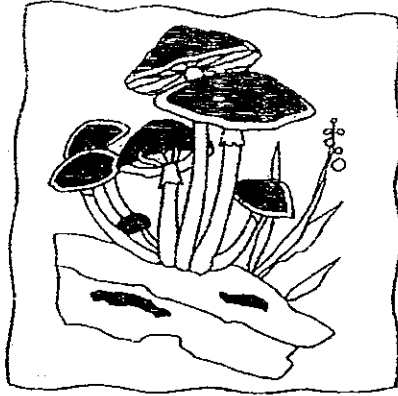
14. Which of these organisms is not an insect?



()

()

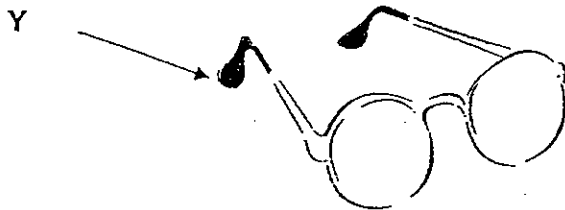
15. In the picture below, what is seen growing on the rotting log?



- (1) mosses
- (2) toadstool
- (3) ferns
- (4) cone

()

16. Which material is most suitable for making part Y of the object shown below?



- (1) metal
- (2) rubber
- (3) ceramic
- (4) fabric

()

17. Which of the following would not respond when touched?

- (1) A dog
- (2) A bird
- (3) A snake
- (4) A piece of beef

()

18. The classification table below shows the properties of 3 different types of materials.

Property	Material		
	A	B	C
Does it stretch?	No	Yes	Yes
Does it break easily?	No	Yes	No
Does it absorb water?	No	Yes	Yes

Which material would you use to make for yourself a t-shirt?

- (1) Material A
- (2) Material B
- (3) Material C
- (4) All the materials



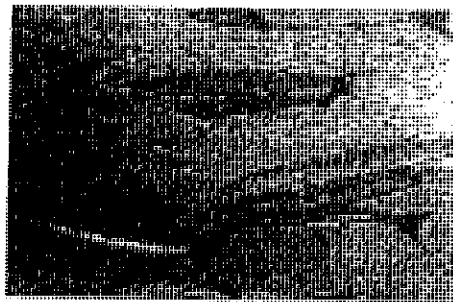
()

19. Why are fungi such as toadstool and mushrooms not able to make their own food?

- (1) They do not have chlorophyll.
- (2) They are not living things.
- (3) They are poisonous.
- (4) They do not have leaves.

()

20. Why do the fish stay near the surface of the water?



- (1) to get sunlight
- (2) to find food
- (3) to get supply of oxygen
- (4) to swim to shore

()

21. Which of the following statements is false about Bird's Nest fern?

- (1) It depends on decaying matter for food.
- (2) It is a non-flowering plant.
- (3) It reproduces from spores.
- (4) It does not produce flowers.

()

22. What do green plants need to make food?

- A. Sunlight
- B. Oxygen
- C. Carbon dioxide
- D. Sugar

- (1) A and B only
- (2) C and D only
- (3) A and C only
- (4) B and C only

()

23. Which one of the following objects is made from thing(s) that was once alive?



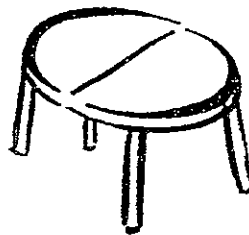
Metal Keys

(1)



Silk Blouse

(2)



Plastic Table

(3)



Ceramic Cup

(4)

()

24. Which food below will not turn bad if left on the table for a week?

- (1) A piece of salted fish
- (2) An opened can of tuna
- (3) A moist bread
- (4) A bowl of spicy curry

()

25. Which of the following materials come from plants?

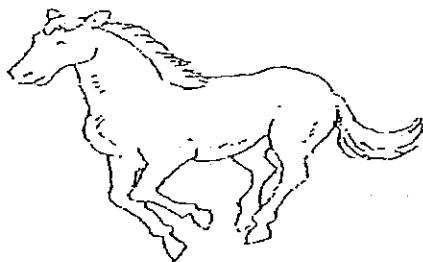
- A. Cotton
- B. Wool
- C. Silk
- D. Nylon

- (1) A only
- (2) B and C
- (3) A, B and C
- (4) A, B, C and D-

()

26. All the animals shown below have the same body covering except

(1)



(2)



(3)



(4)



()

27. What is the function of the antennae of insects?

- (1) to help insects sense their surroundings
- (2) to feed their young
- (3) to use it to sting
- (4) to support its head

()

28. Beatrice conducted an experiment during her Science lesson. She was given some cooked beans and some uncooked beans. She placed the uncooked beans in Beaker A and cooked beans in Beaker B. Both Beaker A and B were left overnight in class. Every morning, she recorded her observation as follows.

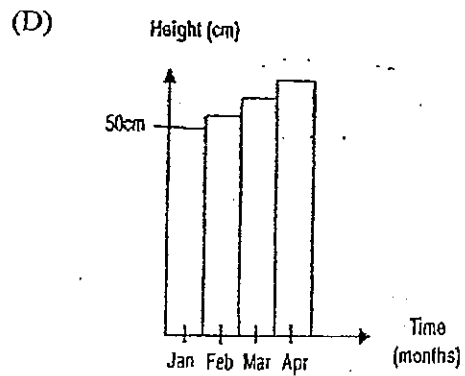
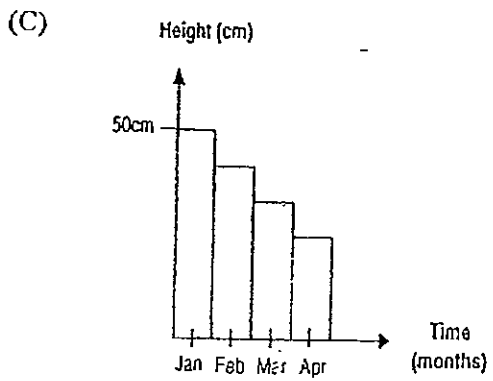
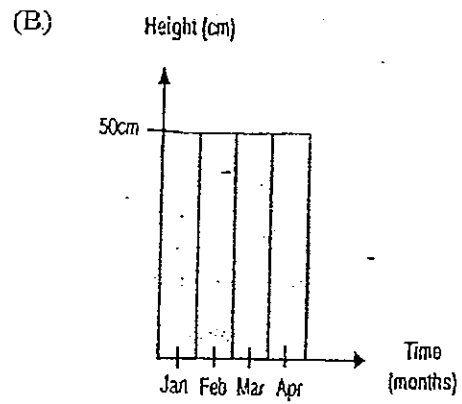
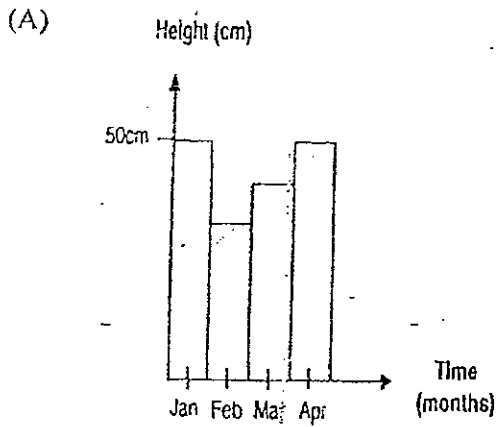
	Observations				
	Day 1	Day 2	Day 3	Day 4	Day 5
Beaker A (Uncooked beans)	No.	Has started to grow.	Has developed leaves.	Has grown into a tiny seedling.	Has grown into a tiny seedling.
Beaker B (Cooked beans)	No.	No.	No.	No.	No.

What could she conclude from this experiment?

- (1) Cooked beans will grow after the fifth day.
- (2) Uncooked beans need more water, sunlight and food to grow.
- (3) Cooked beans are no longer living things and hence, they cannot grow.
- (4) Uncooked beans will not grow.

()

29. Which of the following graphs show the height of an artificial pot of plant and the length(height) of a stretched rubber band respectively over a period of 4 months?



- | | plant | rubber band |
|-----|-------|-------------|
| (1) | A | B |
| (2) | A | C |
| (3) | B | D |
| (4) | C | D |

()

30. Sheng Yang grouped the following animals into groups as shown in the table below.

Insect	Bird	Mammal	Fish
Housefly	Sparrow	Horse	Turtle
Mosquito	Parrot	Whale	Guppy
Bee	Chicken	Cat	Seabass

Which one of the following groups of animals has been grouped wrongly?

- (1) Seabass
- (2) Turtle
- (3) Chicken
- (4) Whale

()



KONG HWA SCHOOL
SEMESTRAL ASSESSMENT ONE 2008
SCIENCE
PRIMARY 3

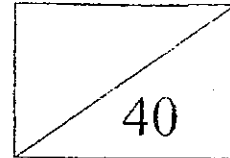
Name: _____ ()

Class: Primary 3/ _____

Date : 9 May 2008

Parent's Signature: _____

Marks



BOOKLET B

OPEN ENDED QUESTIONS

40 MARKS

Total time for Booklets A and B: 1 h 30 mins

DO NOT LOOK AT THE QUESTIONS UNTIL YOU ARE TOLD TO DO SO.

FOLLOW ALL INSTRUCTIONS CAREFULLY.

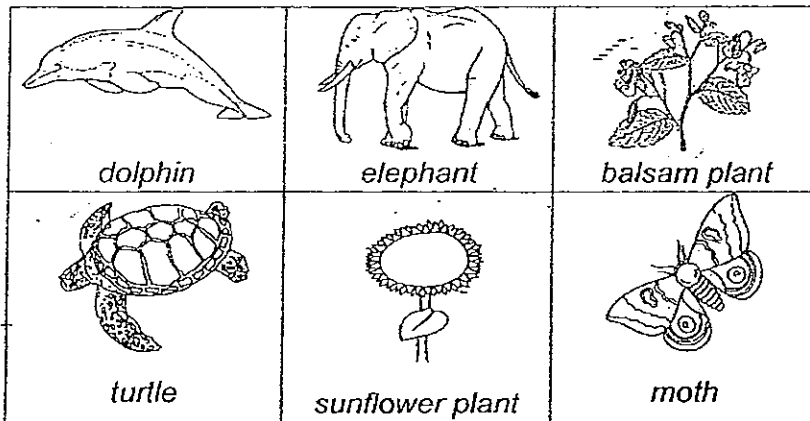
DO NOT WASTE TIME. IF A QUESTION IS DIFFICULT FOR YOU, GO ON TO THE NEXT ONE.

REMEMBER TO ANSWER ALL QUESTIONS.

Section B (40 MARKS)

Read the following questions carefully. Write your answers in the space provided.

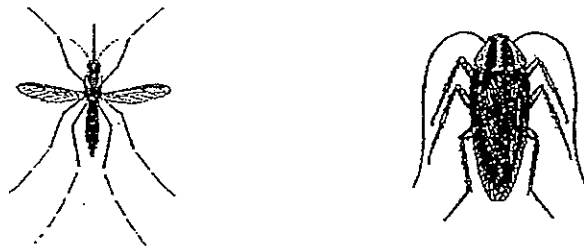
31. Write the names of the following living things in the correct blanks to show how they reproduce. (3m)



Reproduce by having seeds	Reproduce by laying eggs	Reproduce by having young alive
---------------------------	--------------------------	---------------------------------

- a) _____ c) _____ e) _____
 b) _____ d) _____ f) _____

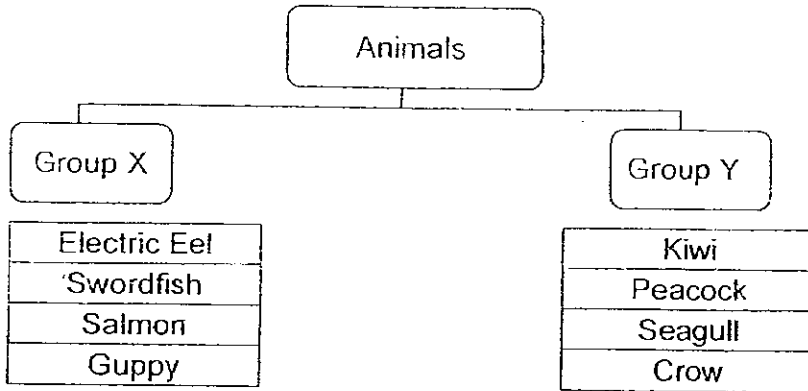
32. Study the insects shown below.



Both are alike in many ways. State two similarities that can be observed from the diagrams. (2m)

- i) _____
 ii) _____

33. Study the classification chart below.



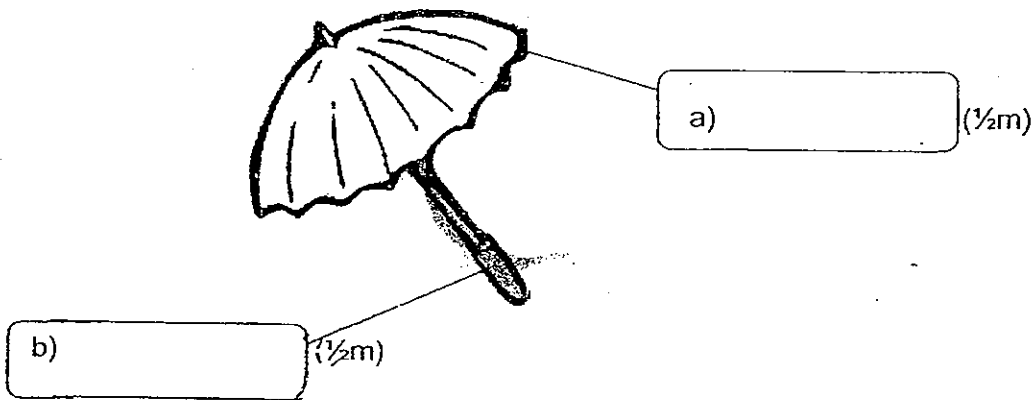
(a) In which group would you classify a **Catfish**? (1m)

(b) Suggest suitable headings for group X and Y. (2m)

(i) Group X: _____

(ii) Group Y: _____

34. Study the object and write down the material used to make each part. State one physical property for each material which makes it suitable for making the part.



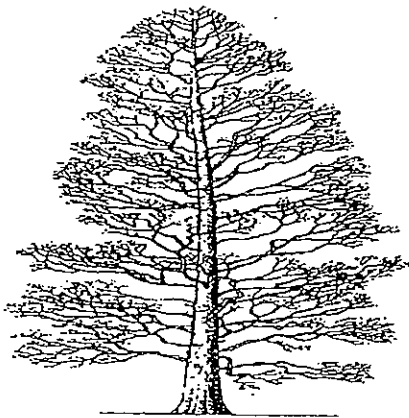
i) Why is **material (a)** suitable for making the object? (1m)

ii) Why **material (b)** suitable for making the object? (1m)

35. Fill in each blank with the correct word. (2m)

- a) A _____ is the young of a frog.
- b) A _____ is the young of a butterfly.
- c) A maggot is the young of a _____.
- d) A kitten is the young of a _____.

36. Observe the trees below and fill in the blanks with the most suitable answers. (2m)



Tree A



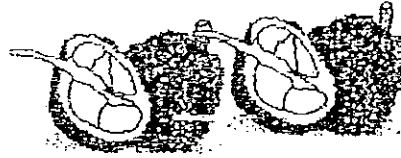
Tree B

Tree A and Tree B have different sizes and shapes. Both have

- (i) _____, and a strong trunk. Like animals, trees need
- (ii) _____, food and air.

37. Grace wanted to make a bag for her to carry 4 durians. She had the following objects.

- Iron sheet
- Cloth
- Tracing paper
- Glass sheet



(a) Which is the **most suitable** material to use for the bag? (1m)

(b) Give **two reasons** for your choice. (2m)

(i) _____

(ii) _____

38. Animal Q has the following characteristics:

Method of reproduction	Lays eggs	√
	Gives birth to its young alive	
Type of outer covering	Scales	
	Feathers	
	Hair or Fur	√
	No outer covering	
Number of limbs/legs	0	
	2	
	4	√
	6	
Method of breathing	Breathes air through lungs	√
	Breathes air through gills	

a) Which **group** of animals does Animal Q belong to? (1m)

b) Name **two examples** of Animal Q. (1m)

i) _____

ii) _____

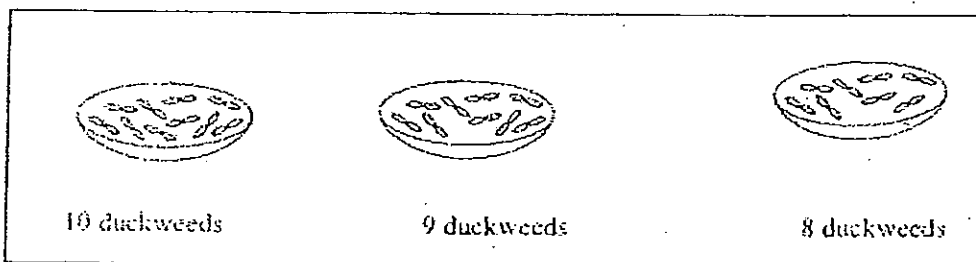
39. Write True (T) or False (F) in the brackets for each of the statements below. (1m each)
- (a) Toothpicks are made from materials that were once alive.
 - (b) Bacteria do not need air, food and water to survive.
 - (c) All living things move by themselves.
 - (d) Fish need their scales to swim.

40. Aloysius left his potted plant at a corner of a room for three days and caused the plant to wilt. Explain why the plant wilted. (1m)



The plant wilted as _____

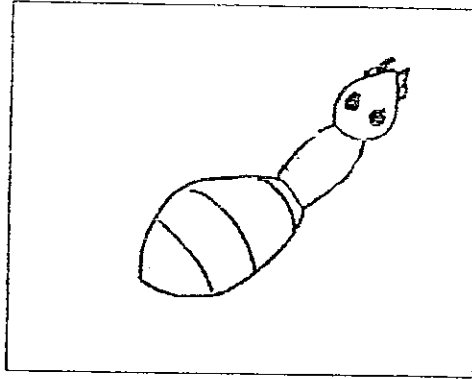
41. Alice set up an experiment as shown below to find out how different amount of water affect the growth of duckweeds.



- (a) Is the above experiment a fair test? Explain your answer. (2m)

- (b) How can you make the experiment a fair test? (1m)

42. The following are the three body parts of an insect. Draw clearly the six legs from the correct part. (1m)



Name the three parts of an insect. (3m)

a) _____ b) _____ c) _____

43. Mushrooms and mould are not plants.

a) They belong to a group of living things called _____ (½m)

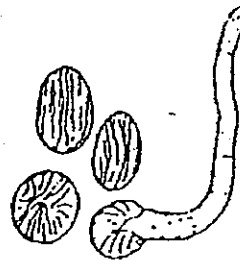


b) Name the other 3 main groups of living things.

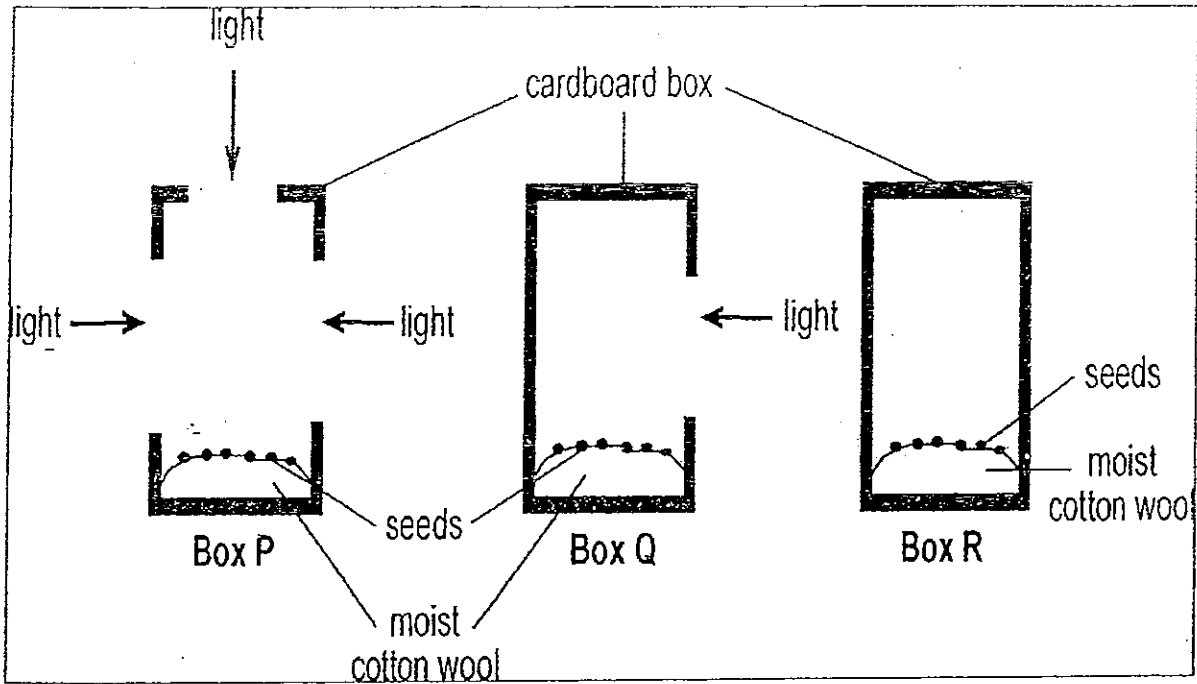
i) _____ (½m)

ii) _____ (½m)

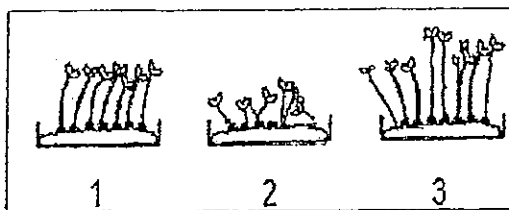
iii) _____ (½m)



44. Sharmaine observed the following diagram of an experiment about the effect of light on the growth of seedlings.



The 3 groups of seedlings were observed after one week and they were shown below.



(a) Match the groups of seedlings (1, 2 and 3) to the correct box (P, Q or R) they had been growing in. (1m)

Box P	Box Q	Box R
()	()	()

(b) Explain why the plants in Box Q all grew toward the same direction. (1m)

45. Read each riddle below and write down the names of the animals. (4m)

a) I fly high in the air and prey on small animals for food. I have sharp claws and beak. My body is covered by feathers.

I am a / an _____.

b) I am covered with hair and am known to be the biggest animal on land. I give birth to my babies alive and feed them with milk.

I am a / an _____.

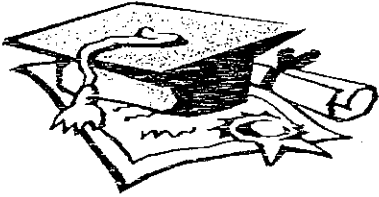
c) I'm six legged and have three body parts. I'm a pest in your house and will cause you to suffer from diarrhoea if you are not careful with what you eat.

I am a / an _____.

d) I live both in water and on land. I carry a hard shell wherever I go and I'm cold-blooded. I lay eggs.

I am a / an _____.

- End of Paper -



ANSWER SHEET

EXAM PAPER 2008

SCHOOL : KONG HWA PRIMARY SCHOOL
SUBJECT : PRIMARY 3 SCIENCE

TERM : SA 1

Q1	Q2	Q3	Q4	Q5	Q6	Q7	Q8	Q9	Q10	Q11	Q12	Q13	Q14	Q15	Q16	Q17
3	4	3	4	2	3	2	1	4	2	2	3	1	2	2	2	4

Q18	Q19	Q20	Q21	Q22	Q23	Q24	Q25	Q26	Q27	Q28	Q29	Q30
3	1	3	1	3	2	1	1	1	1	3	3	2

31) a) balsam plant b) sunflower plant c) turtle
 d) moth e) dolphin f) elephant

32) i) They both have six legs.
 ii) They both have three main body parts.

33) a) I would classify a catfish in Group X.
 b) i) Fish ii) Bird

34) a) nylon b) Rubber
 i) It is waterproof.
 ii) Rubber has a better grip as it doesn't slip easily.

35) a) tadpole b) caterpillar c) mosquito d) cat

36) i) leaves ii) water

37) a) cloth
 b) i) It is flexible. ii) It is strong.

38)a)Animal Q belongs to the mammal group.

b)i) spiny anteater

ii) Platapus

39)a)T b)F c)F d)F

40)It needs sunlight

41)a)It is not a fair test. They have different number of duck weeds.

b)Put the same number of duck weeds in each bowl.

42)a)head b)thorax c)abdomen

43)a)Fungi

b)i)Animals

ii)Micro-organisms

iii)Plants

44)a)3,1,2

b)The plant in Box Q respond to sunlight, thus, all grow towards the direction of sunlight.

45)a)eagle b)elephant c)ant d)tortoise