

南洋小學
NANYANG PRIMARY SCHOOL

PRIMARY THREE SCIENCE
SEMESTRAL ASSESSMENT 1

2008

BOOKLET A

Date : 5th May 2008

Duration : 1 h 45 min

Name : _____ ()

Class: Primary _____ ()

Marks Scored:

Booklet A:		60
------------	--	----

Parent's signature:

DO NOT OPEN THIS BOOKLET UNTIL YOU ARE TOLD TO DO SO.
FOLLOW ALL INSTRUCTIONS CAREFULLY.

Booklet A consists of 15 printed pages including this cover page.

Section A (30 x 2 marks = 60 marks)

For each question from 1 to 30, four options are given. One of them is the correct answer. Make your choice (1, 2, 3 or 4). Shade the correct oval (1, 2, 3 or 4) on the Optical Answer Sheet provide

1. Which one of the following statements is true about living things ?

- (1) All living things can grow.
- (2) All living things need air and water only.
- (3) All living things can make their own food.
- (4) All living things can move around on their own.

2. Which one of the following options consists of **only** non-living things?

- (1) Fish, pebbles and crabs.
- (2) Plastic spoons, puppies and keys.
- (3) Robots, baked beans and cooked rice.
- (4) Rose plant, bacteria and coconut tree.

3. The table below provides some information on P and Q.

Things	Able to move on its own?	Able to reproduce?	Able to make its own food?
P	Yes	Yes	No
Q	No	Yes	Yes

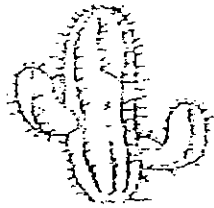
Which one of the following statements is true about P and Q?

- (1) Both P and Q are living things.
- (2) Both P and Q are non-living things.
- (3) P is a living thing and Q is a non-living thing.
- (4) P is a non-living thing and Q is a living thing.

4. The _____ do not lay eggs but give birth to the young alive.

- (1) butterfly , fish and frogs
- (2) horse, squirrel and cow
- (3) penguin , tiger and sparrow
- (4) snail, crocodile and mosquito

5. The diagram below shows two organisms.



Cactus



Toadstool

How are these two living things similar?

- (1) Both are fungi.
 - (2) Both can reproduce.
 - (3) Both can make food.
 - (4) Both are non-flowering plants.
6. The diagram below shows a bean plant.



bean plant

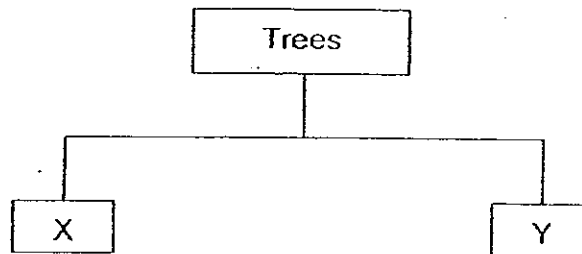
Which part of the plant helps it to climb up the stick?

- (1) Stem
- (2) Roots
- (3) Fruits
- (4) Leaves

7. The _____ causes food to turn bad.

- (1) fern
- (2) moss
- (3) mould
- (4) mushroom

8. Some trees are classified into two groups as shown below.



Which one of the following headings are suitable for X and Y ?

	Heading for X	Heading for Y
(1)	Has stem	No stem
(2)	Has leaves	No leaves
(3)	Has roots	No roots
(4)	Has flowers	No flowers

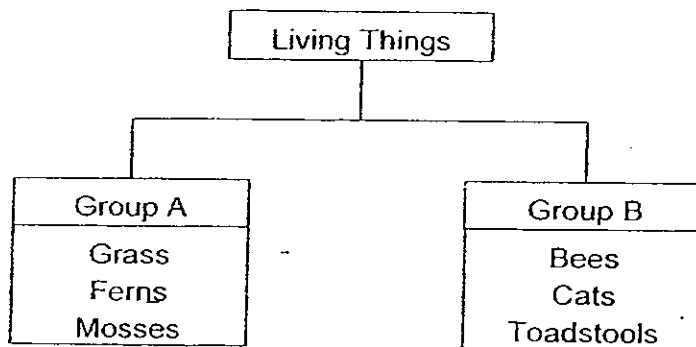
9. Which one of the following options consists of only micro-organisms?

- (1) ferns and fungi
- (2) moss and bacteria
- (3) bacteria and yeast
- (4) toadstool and mould

10. Halim placed some green beans in a plastic container with damp cotton wool. He placed the container on his table. He observed his green beans everyday. What would he see growing from the seeds first ?

- (1) roots
- (2) stems
- (3) shoots
- (4) leaves

11. Some living things are classified into two groups as shown.



Which of the following are suitable headings for Group A and B?

	Group A	Group B
(1)	Plants	Animals
(2)	Plants	Fungi
(3)	Moves freely on its own	Does not move freely on its own
(4)	Make their own food	Depend on others for food

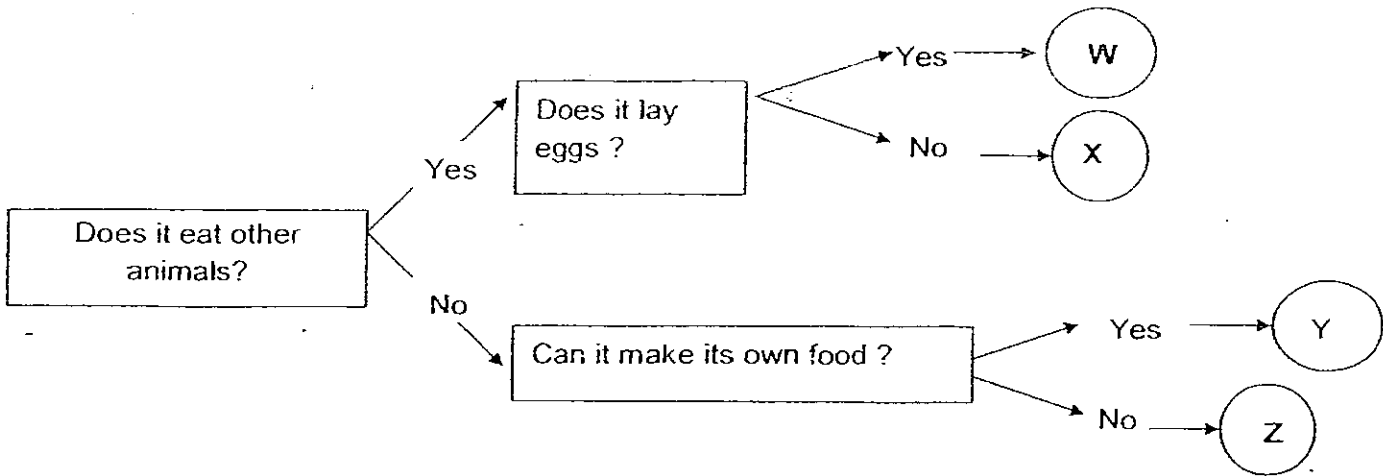
12. During a field trip, Flora had to look out for a tree in the Botanic Gardens. Before the trip, her teacher gave her some descriptions of the tree.

Which 3 descriptions would be most useful to her

- A The fruit is poisonous.
- B The leaves are oval in shape.
- C The bark is slightly green and rough.
- D The roots deep in the soil are brown and hairy.
- E The flowers are white and very fragrant.
- F The tree can be grown in different types of soil

- (1) A, C and D only
- (2) B, C and E only
- (3) C, D and F only
- (4) A, E and F only

13. Look at the flow chart below.



Which one of the following options gives the correct examples of ^W~~X~~ and Y?

	W	Y
(1)	Sheep	Money plant
(2)	Cockroach	Mould
(3)	Frog	Grass
(4)	Bacteria	Fern

14. Which one of the following does not reproduce from seed?

- (1) Mimosa
- (2) Rain tree
- (3) African Tulip
- (4) Staghorn fern

Refer to the table below and answer questions 15 and 16.

Some organisms are classified into 4 groups as shown below.

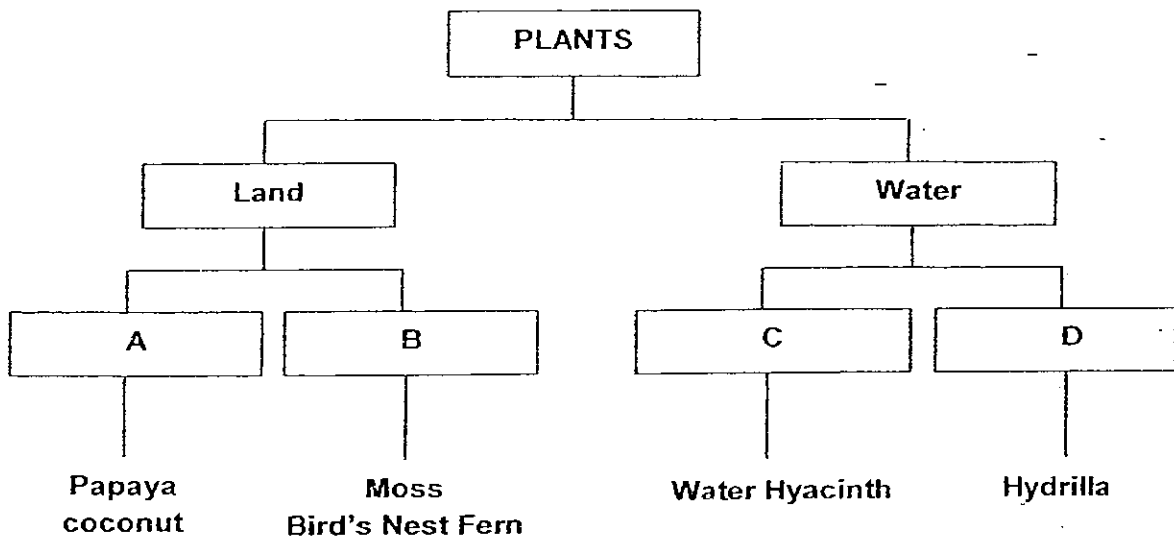
Group A	Group B	Group C	Group D
Water lily Hydrilla	Maidenhair fern Bird's nest fern	Button mushroom	Bread mould Toadstool

15. Which groups is / are plants?
- (1) A only
 - (2) A and B only
 - (3) A, B and C only
 - (4) A, B, C and D
16. Which groups produce spores?
- (1) A and B only
 - (2) C and D only
 - (3) B and C only
 - (4) B, C and D only
17. Which one of the following statements is **NOT** true of bacteria?
- (1) There are no bacteria in our body.
 - (2) Bacteria need food and water to live.
 - (3) Some bacteria can cause diseases.
 - (4) Some bacteria can help to produce food.

18. In which one of the following options are the animals classified correctly ?

	Lay egg on land	Lay egg in water
(1)	eagle	sparrow
(2)	turtle	frog
(3)	dragonfly	butterfly
(4)	bear	tiger

19. The following table shows information of some plants.



Which of the following headings are best for A, B, C and D ?

	A	B	C	D
(1)	Living things	Non-living things	Flowering	Non-flowering
(2)	Non-flowering	Flowering	Totally submerged	Floating
(3)	Flowering	Non-flowering	Floating	Totally submerged
(4)	Floating	Non-living things	Totally submerged	Living things

20. Some pupils made the following statements about bacteria.

A: Bacteria are small.

B: Bacteria are able to reproduce.

C: Bacteria are found everywhere.

D: Some bacteria move about freely.

Which of the following statement shows that bacteria are living thing?

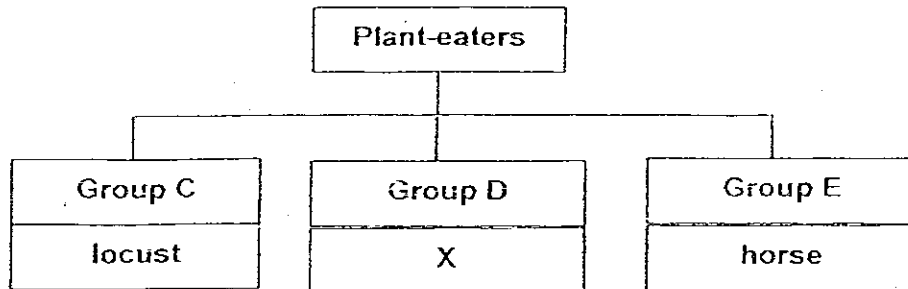
(1) A only

(2) B only

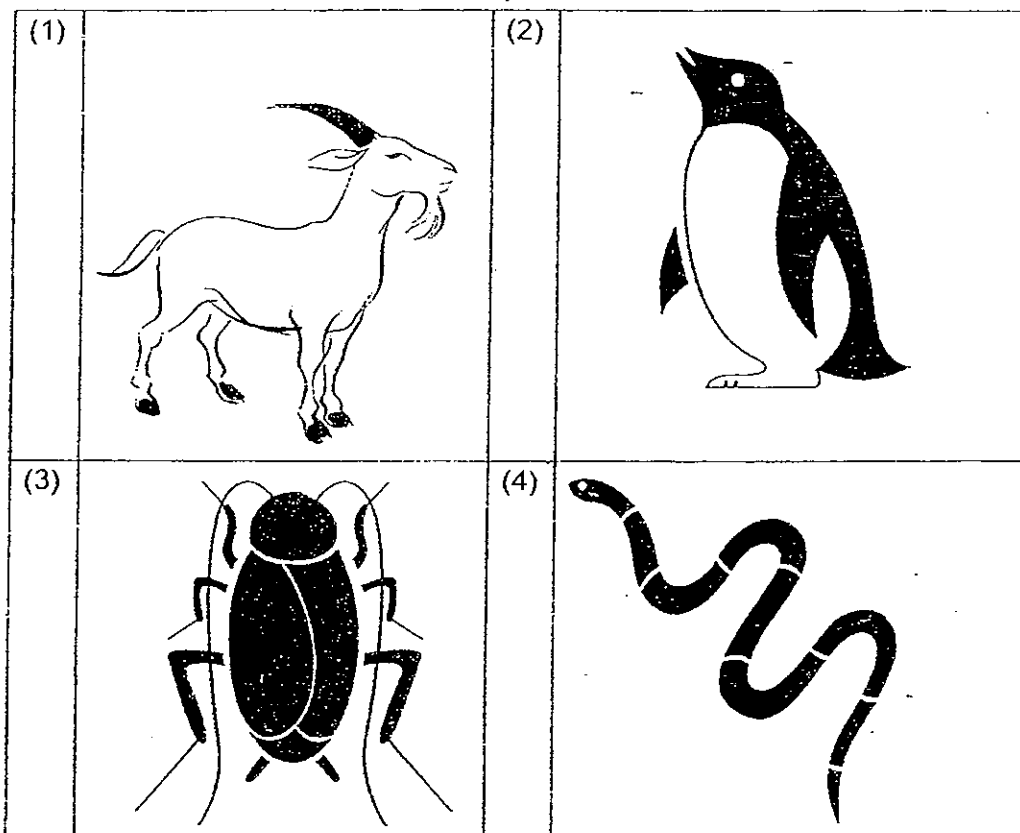
(3) A and C only

(4) B and D only

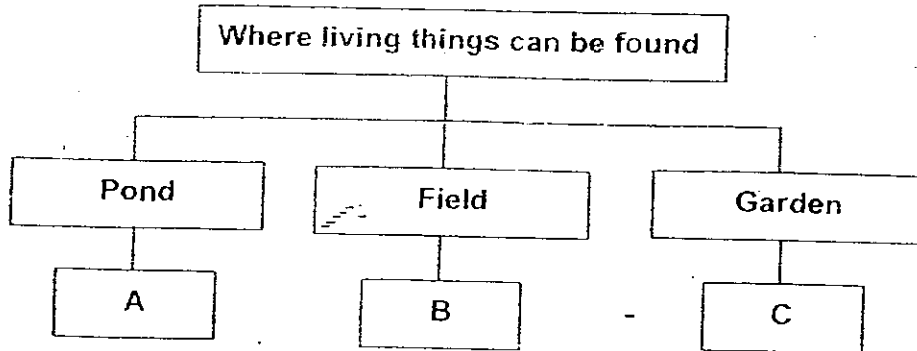
21. Study the classification chart below.



What could organism X be?



22. The chart below is used to classify some organisms according to where they are found.



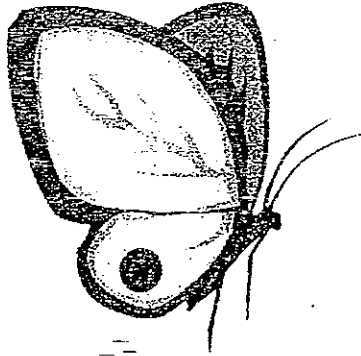
Which of the following options correctly state the organisms that best represent A, B and C ?

	A	B	C
(1)	tadpole	grass	Spider lily
(2)	grass	Ixora	goat
(3)	caterpillar	monkey	elephant
(4)	moss	Bird nest fern	apple

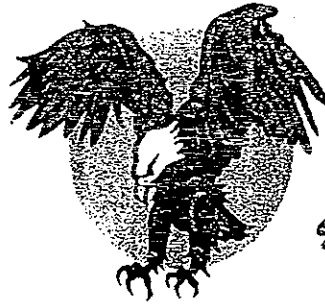
23. In which of the following options is the outer coverings matches correctly to the animals listed ?

	Animal			
	Sheep	Snail	Chicken	Fish
(1)	Feathers	Shell	Hair	Scales
(2)	Hair	Shell	Feathers	Scales
(3)	Hair	Scales	Feathers	Shell
(4)	Hair	Shell	Feathers	Hair

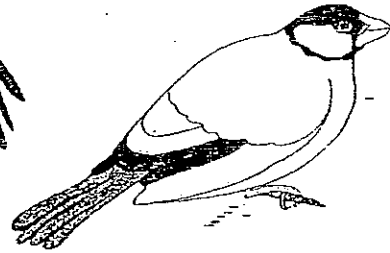
24. Study the animals shown below.



butterfly



eagle



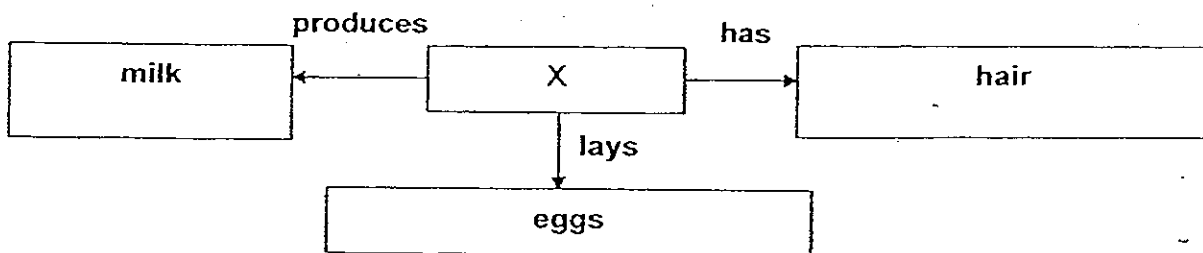
sparrow

Which of the following statement(s) is / are true for all the animals?

- A: They can fly.
- B: They are meat eaters.
- C: They lay eggs for reproduction.

- (1) A and B only
- (2) A and C only.
- (3) B and C only
- (4) A, B and C

25. Study the concept map below.



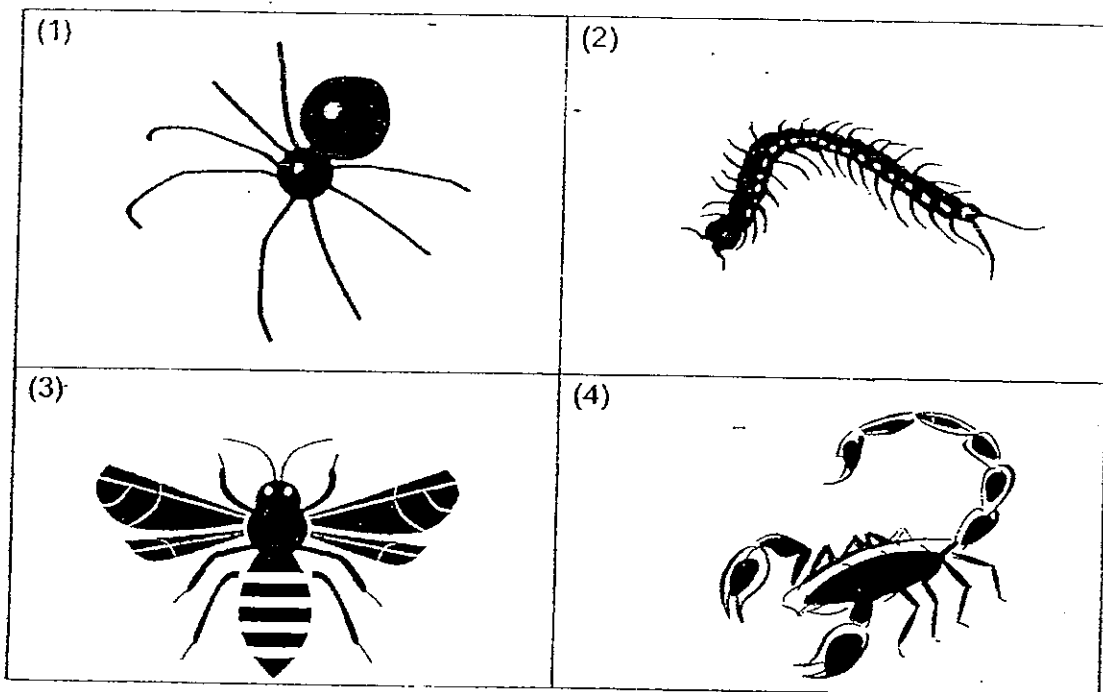
Which animal best represent X in the concept map ?

- (1) cat
- (2) duck
- (3) mouse
- (4) platypus

26. Which one of the following statement is true for birds and not other animals ?

- (1) They can fly.
- (2) They lay eggs.
- (3) They have two legs.
- (4) They have feathers.

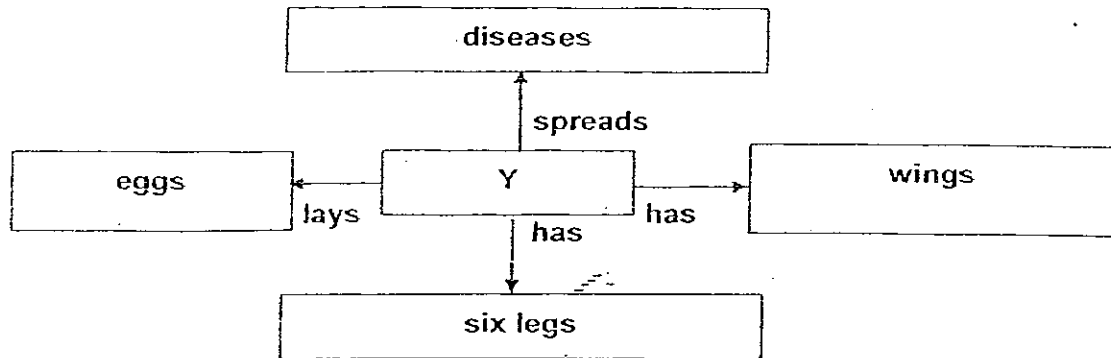
27. Which of the following animals is an insect?



28. Which of the following comparisons between a butterfly and tick is true?

	Butterfly	Tick
(1)	Has six legs	Has four legs
(2)	Lays eggs	Gives birth to young alive
(3)	Feeds on plant	Feeds on other animals
(4)	Has three body parts	Has three body parts

29. Study the concept map below.



Which of the following animals could be animal Y ?

- (1) Bee
- (2) Termite
- (3) Earthworm
- (4) Cockroach

30. Four pupils observed an adult animal and recorded the following information.

- It has more than 8 legs
- It lays eggs
- It has no fins and no gills
- It does not take care of its young
- It lives on land
- It has no outer covering on its body

Each pupil then made the following conclusions :

Pupil A: The animal is a fish.

Pupil B: The animal is a bird.

Pupil C: The animal is an insect.

Pupil D: The animal is a mammal.

Who made the correct conclusion ?

- (1) Pupil A and B only
- (2) Pupil C and D only
- (3) Pupil B, C and D only
- (4) None of the pupils

NANYANG PRIMARY SCHOOL

PRIMARY THREE SCIENCE

SEMESTRAL ASSESSMENT 1

2008

BOOKLET B

Date : 5th May 2008

Duration : 1 h 45 min

Name : _____ ()

Class: Primary _____ ()

Marks Scored:

Booklet A:	60
Booklet B :	40
Total :	100

Parent's signature:

DO NOT OPEN THIS BOOKLET UNTIL YOU ARE TOLD TO DO SO.
FOLLOW ALL INSTRUCTIONS CAREFULLY.

Booklet B consists of 11 printed pages including this cover page.

Section B (40 marks)

Write your answers to questions 31 to 46 in the spaces provided.

Marks will be deducted for misspelt key words.

31. Tom saw an organism that he had never seen before. It was green in colour and shaped like a leaf. He noticed it only after it moved to catch a flying insect, before eating it.

Based on what he had seen Tom concluded that it is an animal

Give 2 reasons why the organism he saw was an animal. (2m)

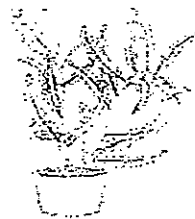
i) _____

ii) _____

32. The pictures show two living things.



ostrich

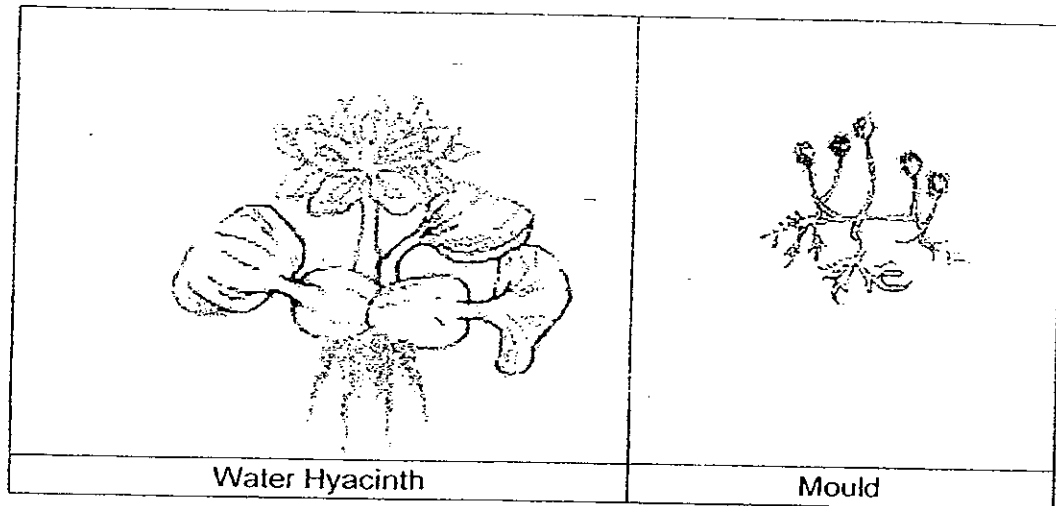


fern

a) Both the animal and the plant are living things. Besides needing food, air and water state another characteristic that they both have in common. (1m)

b) How are the two living things different in the way they move? (1m)

33. Study the two diagrams below.



a) Which group of living things does each of them belong to? (1m)

i) Water Hyacinth: _____

ii) Mould: _____

b) How do the two living things differ in the way they obtain their food? (1m)

34. For the following statements, write "T" if it is true or "F" if it is false in the brackets provided. (2m)

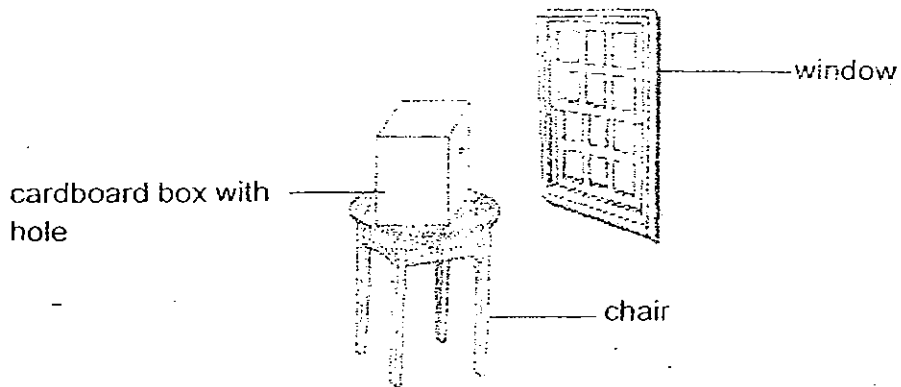
a) Bacteria are living thing. ()

b) All plants do not need food. ()

c) Living things can grow and die but non-living things cannot. ()

d) The bean seed needs sunlight to grow into a seedling. ()

35. Mary took a pot of plant from her garden and placed it on a chair next to a window. She then covered the potted plant with a cardboard box which has an opening on its side.

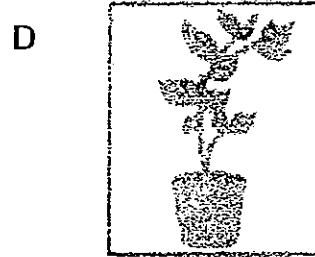
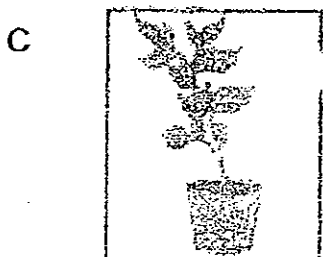
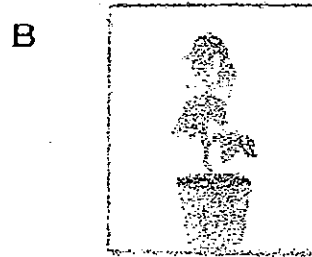
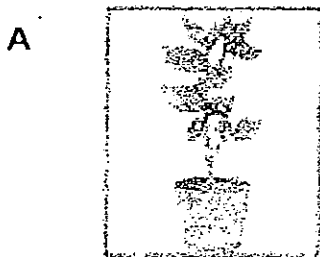


After a few days she went to check on her potted plant.

- (a) Which one of the diagrams below showed the way the plant grew after a few days?

Diagram _____

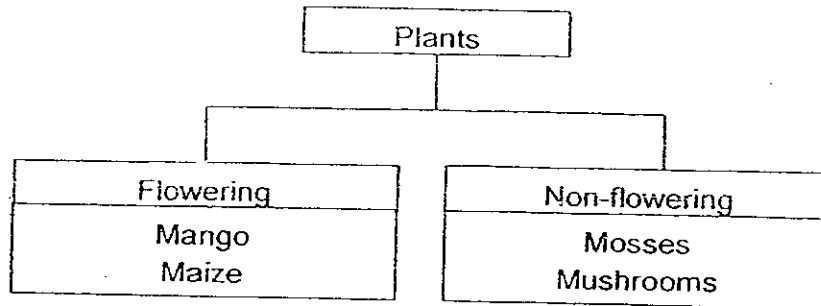
(1m)



- (b) Explain why Mary must water the plant before she covered it with the cardboard box. (1m)

36. Study the classification below.

(3m)



a) Which organism has been wrongly classified?

b) Explain your choice in (a)

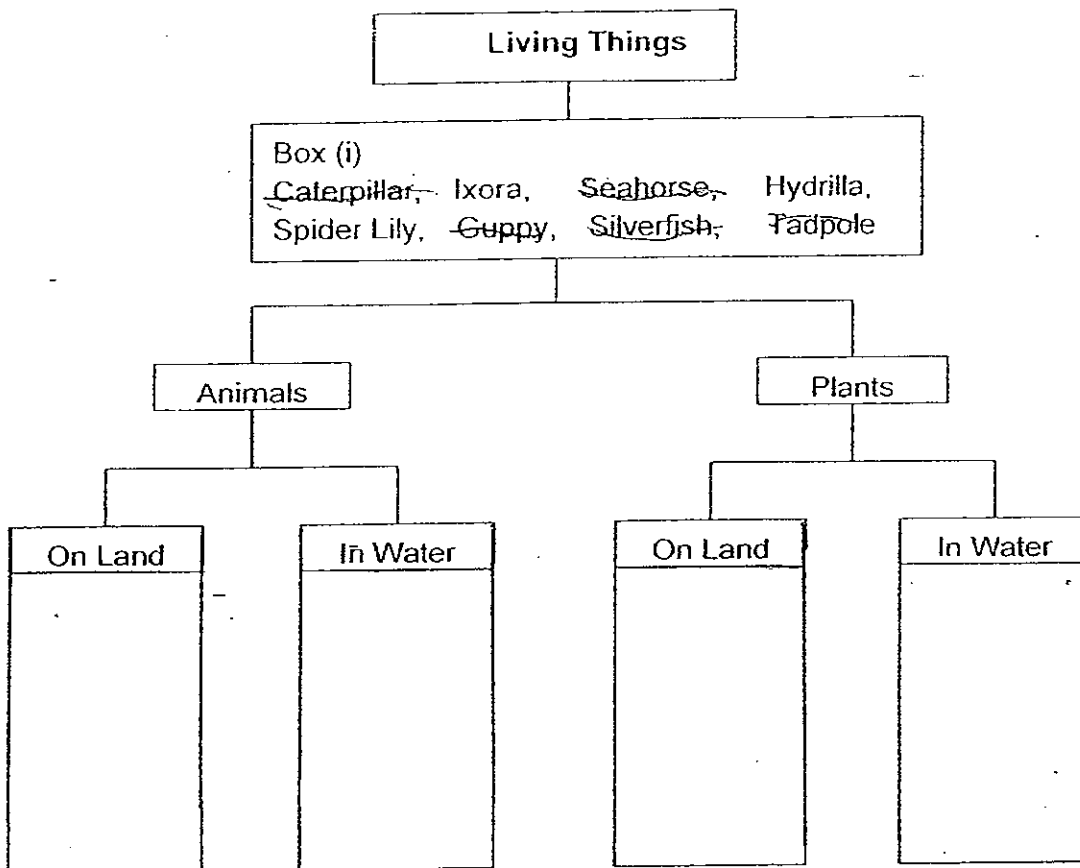
c) Name another group of plants which do not produce flowers.

37. Fill in the blank with the most suitable word.

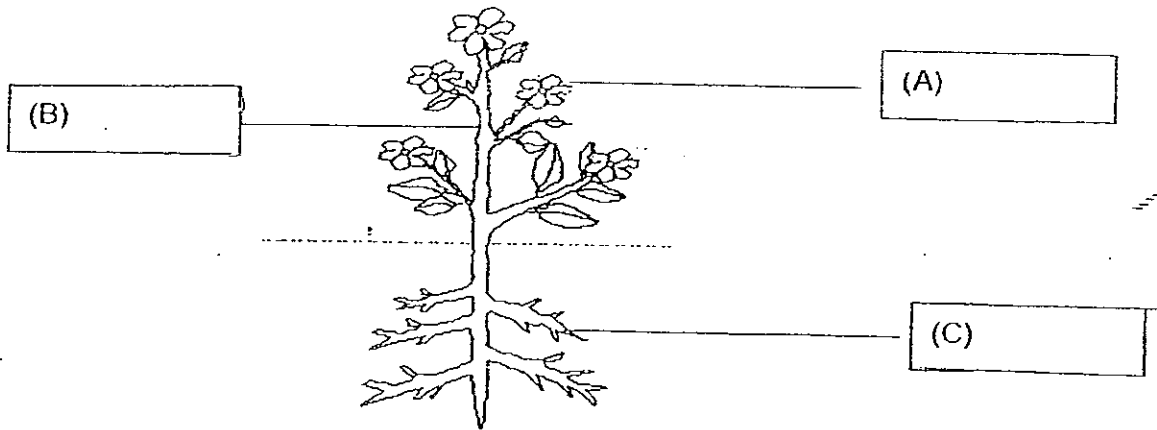
(3m)

When a seed takes in _____, it starts to swell. The seed coat covering the seed will burst open. A tiny _____ pushes out and grows downwards. Next, a tiny _____ grows above the soil. As the new _____ grows, it uses food stored in the seed. Soon the little green _____ which help the young plant appear to make its own _____

- 38 Classify the eight living things listed in Box (i) according to the whether they are animals or plants that live on land or in water. (4m)



39. Label the parts of the plant by writing the name of the parts in boxes A, B and C. (3m)



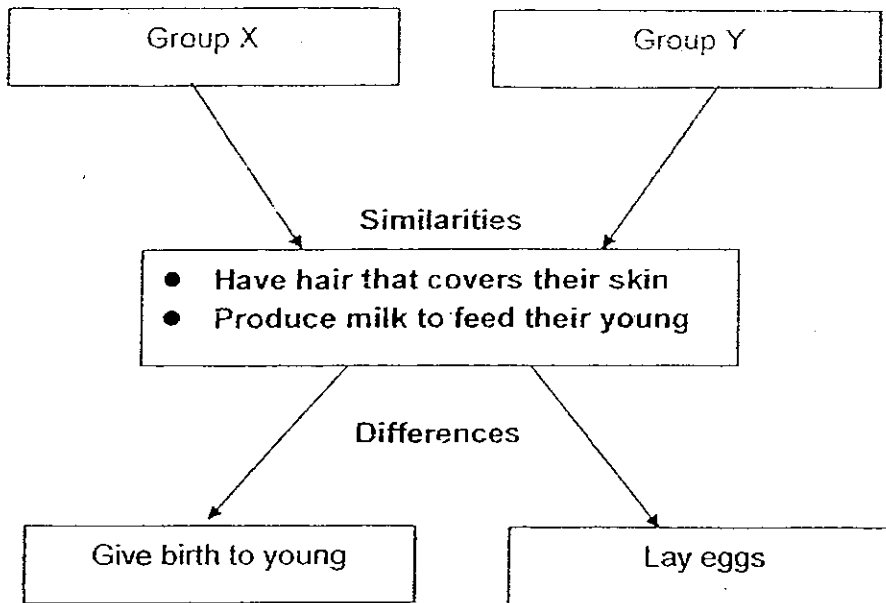
In the table below, state the parts of the plant that matches the functions stated.

Parts	Functions
(i)	To make food for the plant.
(ii)	To provide support by holding the plant firmly to the ground. Absorb water and nutrients needed for plant growth.
(iii)	To keep the plant upright.

40. In the table below, name the outer covering of each animal. (2m)

	Animal	Outer Covering
(i)	Bear	
(ii)	Duck	
(iii)	Fish	
(iv)	Hamster	

41. Study the graphic organizer below.



Based on the organizer, group the animals listed in the box below into Group X and Y by writing their names in the table below the box. (2m)

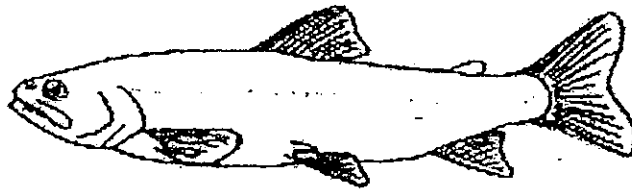
Spiny anteater, whale, gorilla, seal

Group X	Group Y

42. Complete the table below to show the differences between an eagle and a camel. (2m)

	Eagle	Camel
Type of Outer Covering		
Way of reproduction		

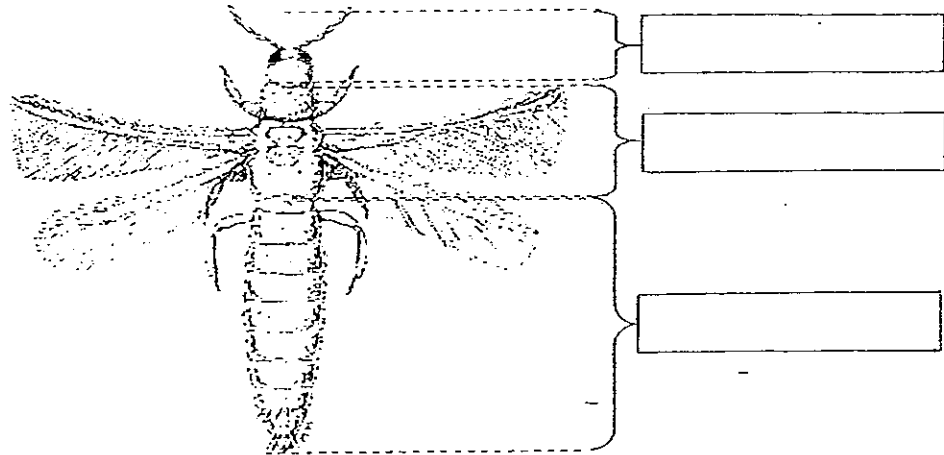
43. A diagram of a fish is shown below.



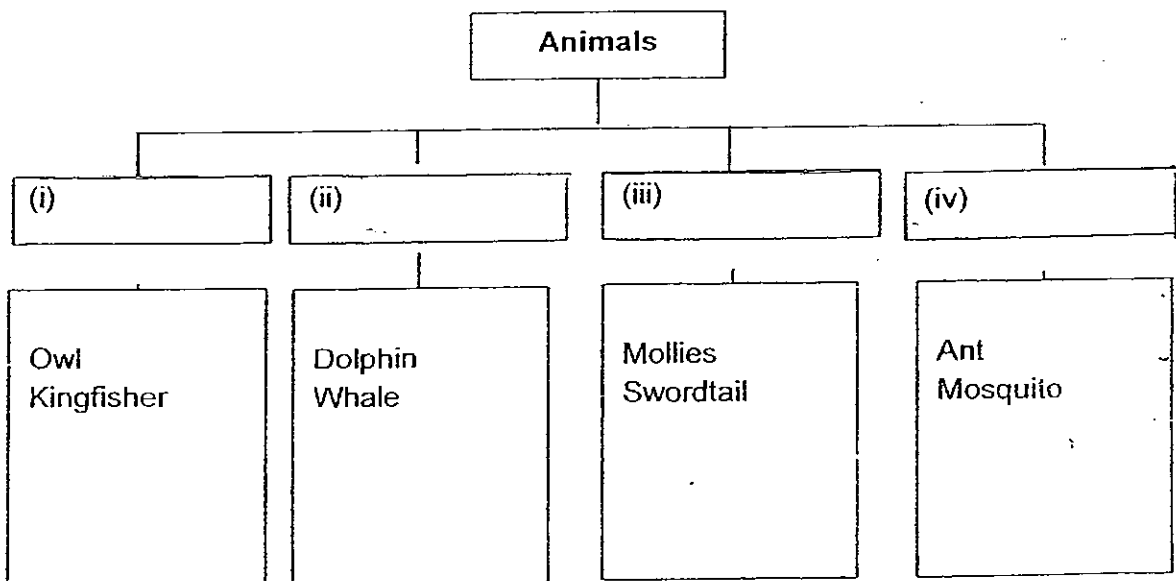
- (a) Which part of the fish helps it to move? (1m)

- (b) Which part of the fish helps it to breathe? (1m)

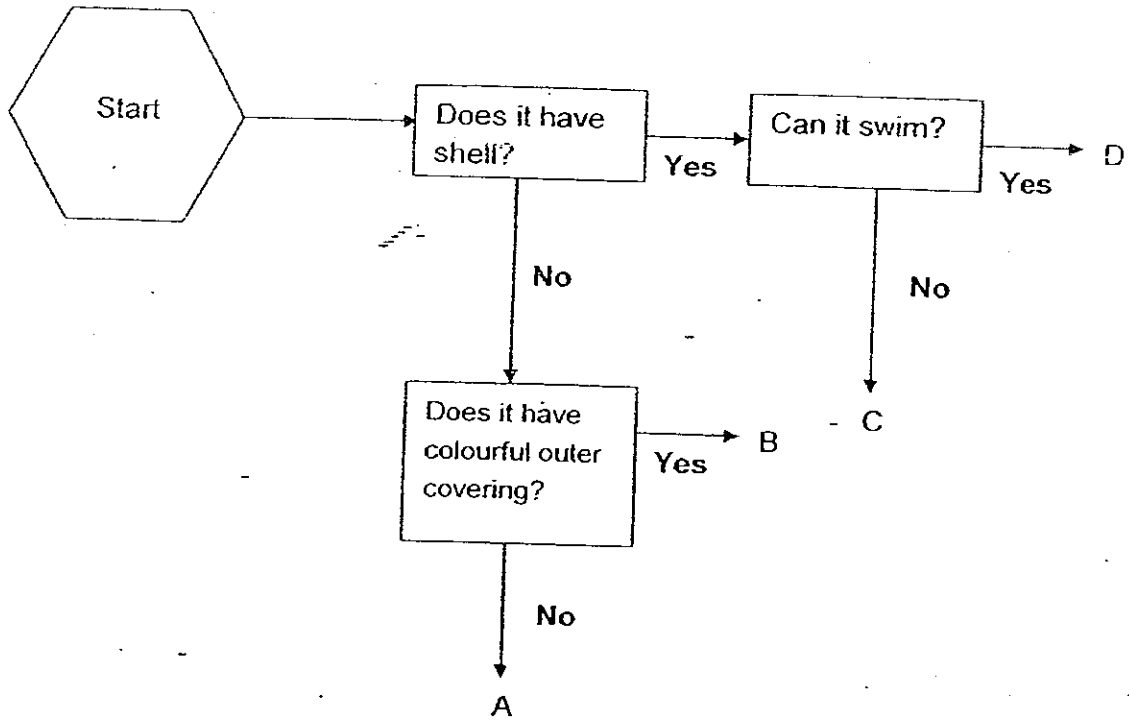
43. Label the three body parts of the insect by writing the name of each part in the boxes provided. (3 m)



44. Complete the classification chart below by filling in boxes (i),(ii),(iii) and (iv) with the correct heading. (2m)



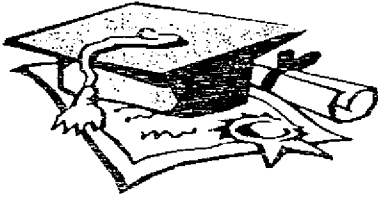
45. The flow chart below shows the similarities and differences among some animals A, B, C and D.



- (a) Based on the chart, state a similarity between animal C and D. (1m)
-
- (b) State a difference between animal A and B? (1m)
-
- (c) Using the information in the flow chart, match animal A, B, C and D correctly to each of the animals listed in the table below. (2m)

Turtle	Garden Snail	Mynah	Peacock

-----END OF PAPER-----



ANSWER SHEET

EXAM PAPER 2008

SCHOOL : NANYANG PRIMARY SCHOOL
SUBJECT : PRIMARY 3 SCIENCE

TERM : SA 1

Q1	Q2	Q3	Q4	Q5	Q6	Q7	Q8	Q9	Q10	Q11	Q12	Q13	Q14	Q15	Q16	Q17
1	3	1	2	2	1	3	4	3	1	4	2	3	4	2	4	1

Q18	Q19	Q20	Q21	Q22	Q23	Q24	Q25	Q26	Q27	Q28	Q29	Q30
2	3	4	1	1	2	2	4	4	3	3	4	4

31) i) It can move by itself. ii) It needs food.

32) a) Both can reproduce and grow.

b) The ostrich can move on its own but the fern cannot move about freely.

33) a) i) Plant ii) fungi

b) The water hyacinth can make its own food but the mould gets food from dead organisms.

34) a) T b) F c) T d) F

35) a) D.

b) The plant needs water to live

36) a) mushroom.

b) Mushroom is a fungi and not a plant.

c) Ferns or conifers.

37) water, root, shoot, leaves, food

38) On Land: caterpillar, silverfish
In water: seahorse, tadpole, guppy
On Land: ixora, spider lily
In water: Hydrilla

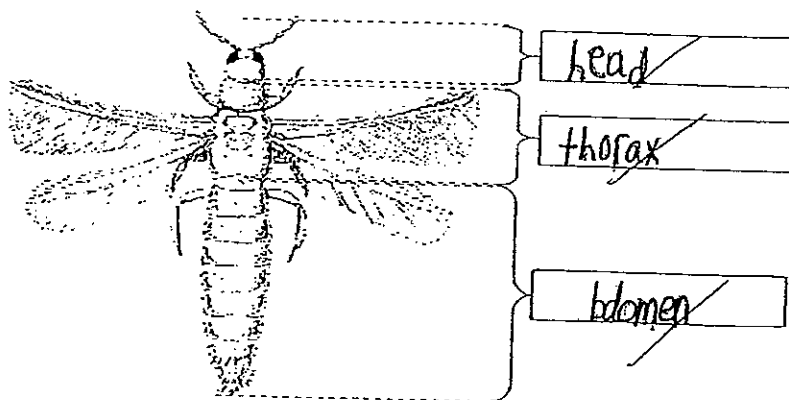
39) A: flower B: stem C: root
i) leaves ii) roots - iii) stem

40) i) hair ii) feathers iii) scales iv) fur

41) X: whale, gorilla, seal
Y: spiny anteater

42) Eagle: feather, lays eggs
Camel: hair, gives birth to young alive

43) a) The part is the tail:
b) The gills inside the gill cover.



44) i) birds ii) mammals iii) fishes iv) insects

45) a) Both have shell.
b) B has a colourful outer covering but A does not have.
c) D, C, A, B