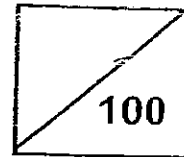




Rosyth School  
First Semestral Assessment for 2008  
SCIENCE  
Primary 3

Name: \_\_\_\_\_

Total  
Marks:



Class: Pr \_\_\_\_\_ Register No. \_\_\_\_\_ Duration: 1 h 30 min

Date: 12th May 2008 Parent's Signature: \_\_\_\_\_

Instructions to Pupils:

1. Do not open the booklets until you are told to do so.
2. Follow all instructions carefully.
3. This paper consists of 2 booklets, Booklet A and Booklet B.
4. For questions 1 to 30 in Booklet A, write the answer in the brackets provided.
5. For questions 31 to 46, write your answers in the spaces given in the Booklet B.

	Maximum	Marks Obtained
Booklet A	60 marks	
Booklet B	40 marks	
Total	100 marks	

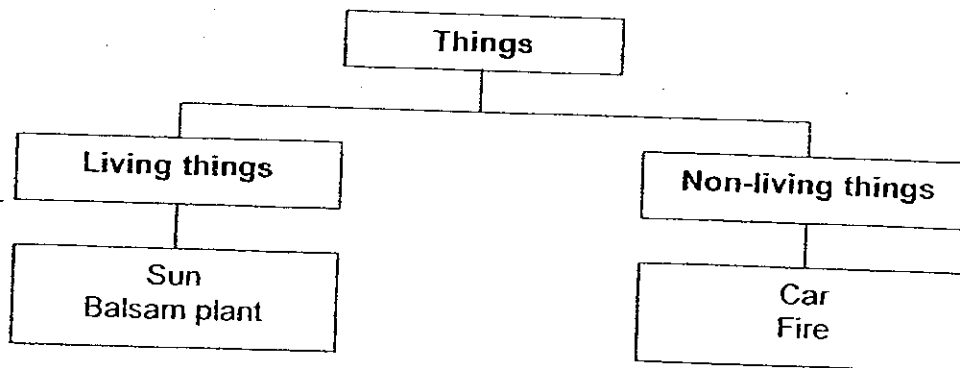
\* This booklet consists of 19 pages.

This paper is not to be reproduced in part or whole without the permission of the Principal.

**BOOKLET A (60 MARKS)**

For each question from 1 to 30, four options are given. One of them is the correct answer. Make your choice (1, 2, 3 or 4). Write the answers in the brackets provided.

1. Study the classification chart below carefully.



Which of the above has been classified wrongly?

- (1) Sun
- (2) Car
- (3) Fire
- (4) Balsam plant

( )

2. Ming Ming made the following observation about his sister.

When my sister sees a spider in the room, she screams and jumps until someone catches it.

What does the above observation tell us about Ming Ming's sister? :

- X: She can grow.
- Y: She can respond to changes.
- Z: She can move about on her own.

- (1) X and Y only
- (2) X and Z only
- (3) Y and Z only
- (4) X, Y and Z

( )

3. Henry keeps his guppies in two tanks (A and B) under different conditions. The table below shows the conditions that the fishes are kept.

	Amount of water	Amount of food	Number of guppies	Number of water plants
Tank A	1 litre	20 pellets a day	5	4
Tank B	1 litre	20 pellets a day	5	0

After one week, Henry found that the guppies in Tank A were swimming at the bottom of the tank while the guppies in Tank B were swimming near the water surface.

What could be the reason for the above difference in the observation made?

- (1) There was too much food in Tank B.
  - (2) There was not enough water in Tank B.
  - (3) There were too many guppies in Tank B.
  - (4) There was not enough air in Tank B.
- ( )
4. Which of the following correctly shows the height of a doll over a period of three years?

	Height in cm			
	Original height	After one year	After two years	After three years
(1)	30	25	20	15
(2)	30	30	30	30
(3)	30	35	35	30
(4)	30	35	40	45

( )

5. The following statements show some characteristics of clouds.

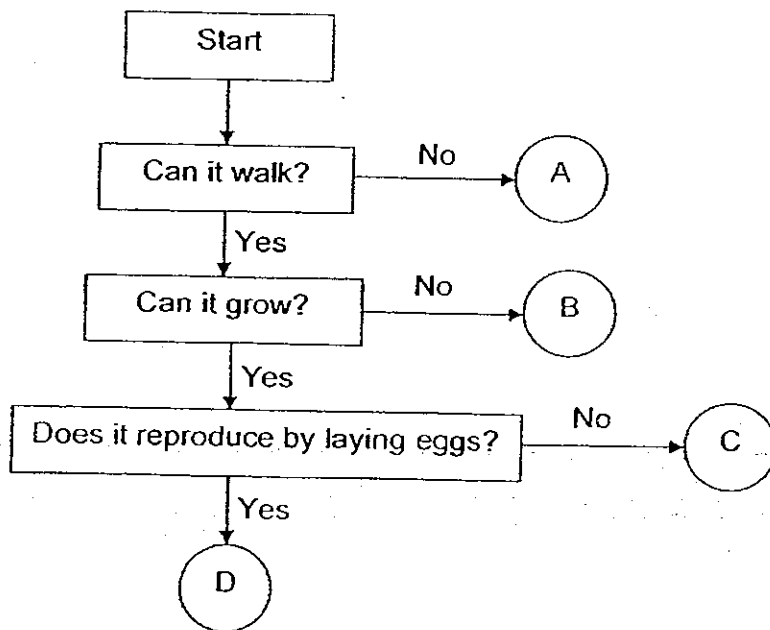
- A: Clouds can move.
- B: Clouds cannot die.
- C: Clouds can become bigger.
- D: Clouds do not need air, food and water.

Which of the above tells us that clouds are non-living things?

- (1) A only
- (2) D only
- (3) A and C only
- (4) B and D only

( )

6. Study the flowchart below.

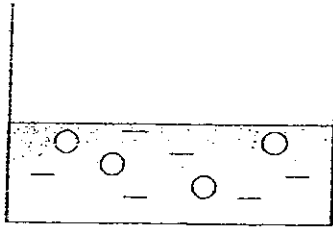


Which of the above is most likely to be a remote control dog?

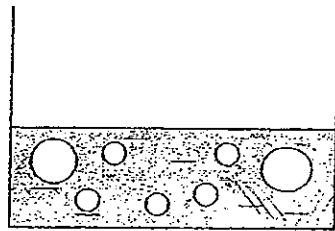
- (1) A
- (2) B
- (3) C
- (4) D

( )

7. Wenli placed some water jellies in a container as shown below.



After a few days, he made the following observation.

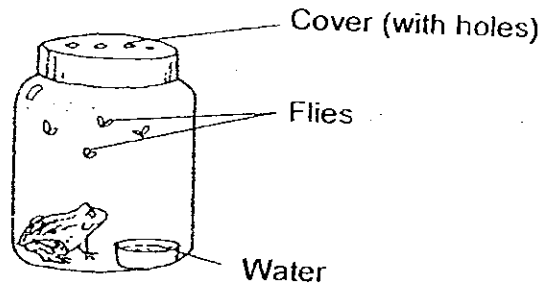


He concluded that the water jellies are living things.  
What could be the possible reasons to support his conclusion?

- A: Water jellies can grow.
- B: Water jellies move in water.
- C: Water jellies need water to survive.
- D: Water jellies can increase in numbers.

- (1) A and B only
- (2) A and D only
- (3) B and C only
- (4) C and D only

8. Ali was given a set-up as shown below.



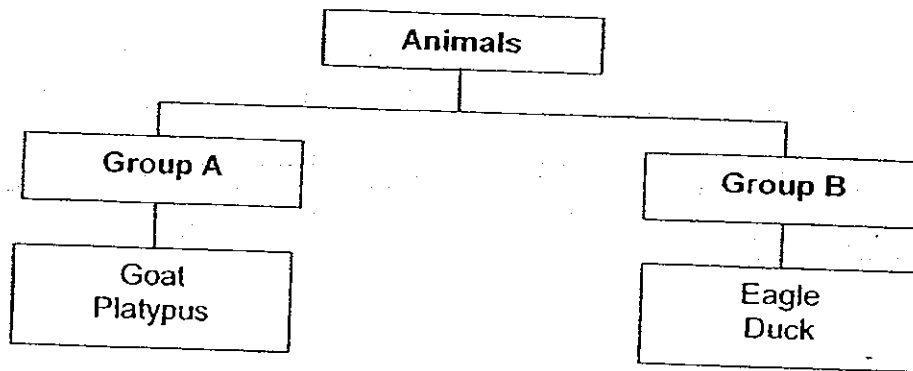
What should Ali do to the set-up to show that frogs need air to live?

- A: Remove the flies.
- B: Remove the water.
- C: Add another frog.
- D: Replace the cover (with holes) with a closed lid cover.

- (1) A only
- (2) D only
- (3) B and C only
- (4) A and D only

( )

9. Study the classification diagram below.

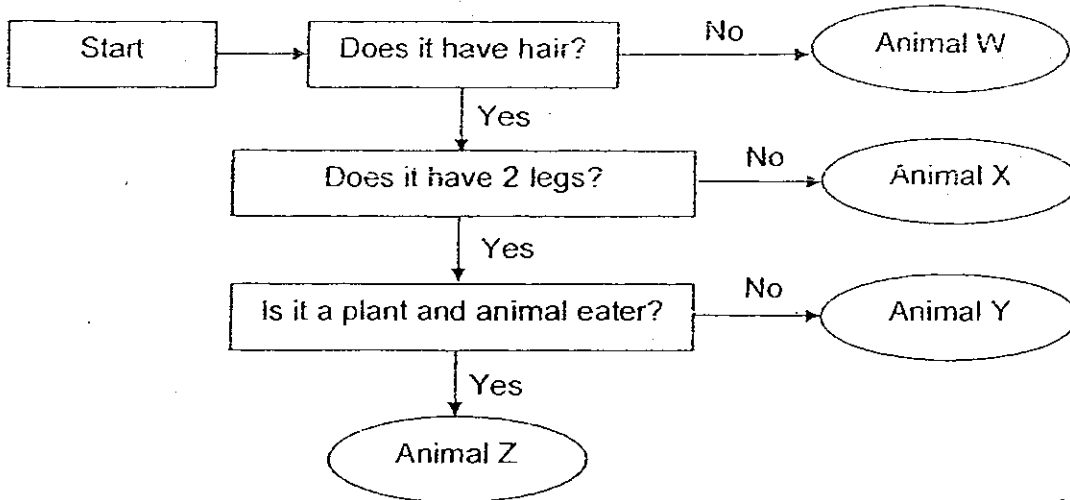


Which of the following is the most suitable set of headings for Group A and Group B?

	Group A	Group B
(1)	Live on land only	Live in water only
(2)	Lay eggs	Give birth to young alive
(3)	Animal eaters	Plant eaters
(4)	Have hair	Have feathers

( )

10. Study the flowchart below.



What is/are the similarities between Animal Y and Animal Z?

- A: Both have hair.
- B: Both have 2 legs.
- C: Both are plant and animal eaters

- (1) A only
- (2) C only
- (3) A and B only
- (4) A, B and C

( )

11. Muthu found an animal during one of his excursions. He brought it home and observed it. He then recorded his observations as shown below.



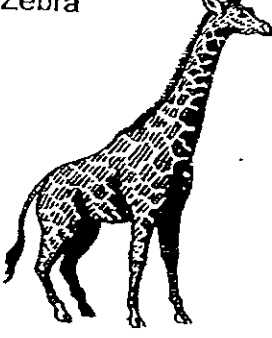



It lays eggs.  
It has a shell.  
It lives on land only.  
It does not have six legs.

Which of the following is most likely to be the animal that Muthu found?

- (1) Crab
- (2) Snail
- (3) Spider
- (4) Millipede

( )

12. The following animals are grouped into two groups as shown below.

Group R	Group S
 <p>Zebra</p>  <p>Squirrel</p>  <p>Giraffe</p>	 <p>Crocodile</p>  <p>Snake</p>  <p>Spiny anteater</p>

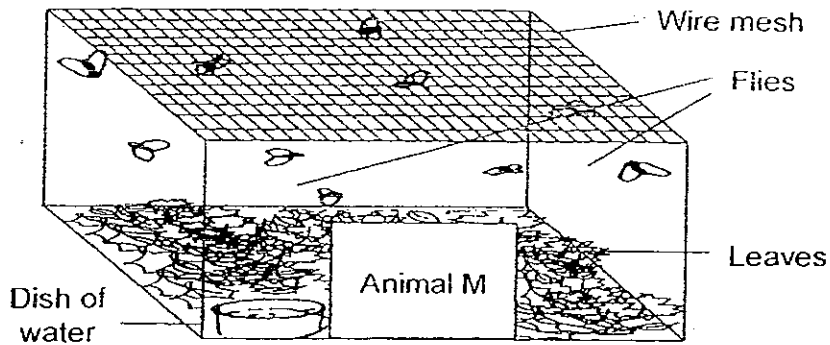
Which of the following headings below is most suitable for the animals in Group R and Group S?

	Group R	Group S
(1)	Animal and plant eater	Animal eater
(2)	Has hair as outer covering	Has scales as outer covering
(3)	Lives on land only	Lives in water only
(4)	Gives birth to young alive	Lays eggs

( )



13. An experiment was carried out where an unknown Animal M was placed in a tank with some water, leaves and some flies as shown below.



The amount of leaves and flies were recorded for the next three hours as shown below.

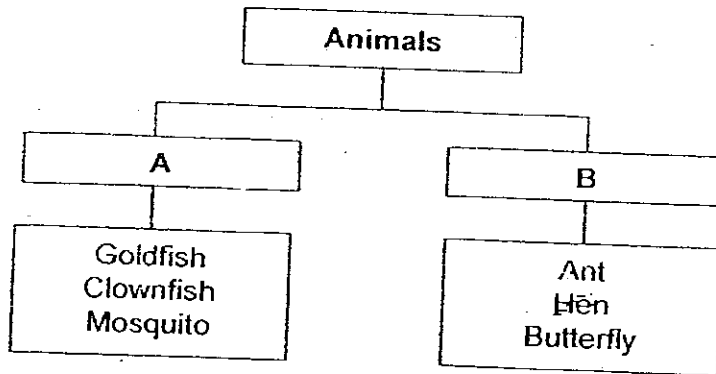
	Amount of leaves (in grams)	Number of flies
Start of experiment	100	10
After 1 hour	90	10
After 2 hours	70	10
After 3 hours	40	10

Which of the following best describes the eating habits of Animal M?

- (1) It is a plant eater.
- (2) It is an animal eater.
- (3) It is a plant and animal eater.
- (4) It does not eat anything at all.

( )

14. Study the classification diagram below.



Which one of the following set of headings are best represented by A and B?

	A	B
(1)	With gills	Without gills
(2)	With scales	Without scales
(3)	Lives in water	Lives on land
(4)	Lays eggs in water	Lays eggs on land

( )

15. The table below shows some characteristics of Animals E, F and G.

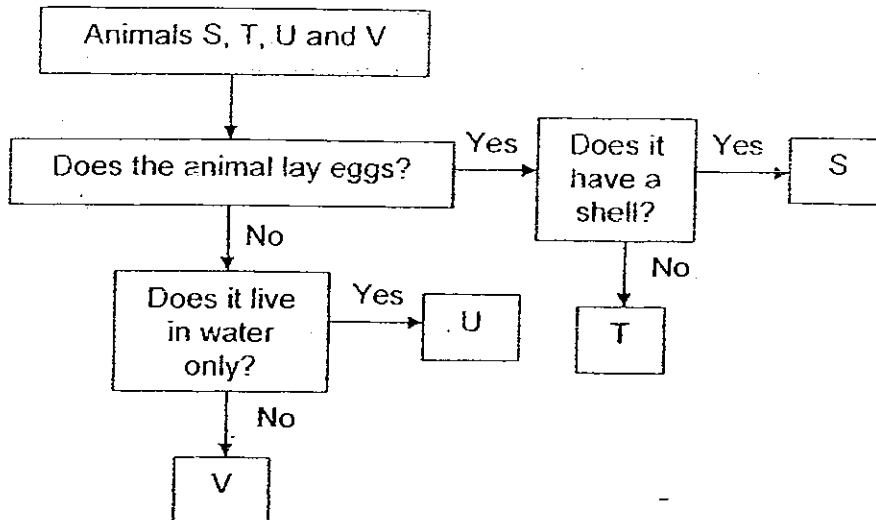
	Animals		
	E	F	G
Is it a mammal?	Yes	Yes	No
Does it give birth to young?	Yes	No	No

Which of the animals below correctly describes Animals E, F and G respectively?

	Animal E	Animal F	Animal G
(1)	rhinoceros	platypus	housefly
(2)	giraffe	elephant	chicken
(3)	mosquito	spiny anteater	parrot
(4)	mouse	gorilla	pigeon

( )

16. Study the flowchart below.



Four pupils gave four statements based on the flowchart above.

Ann: Animal S lays eggs and does not have a shell.

Ben: Animal T lays eggs and does not have a shell.

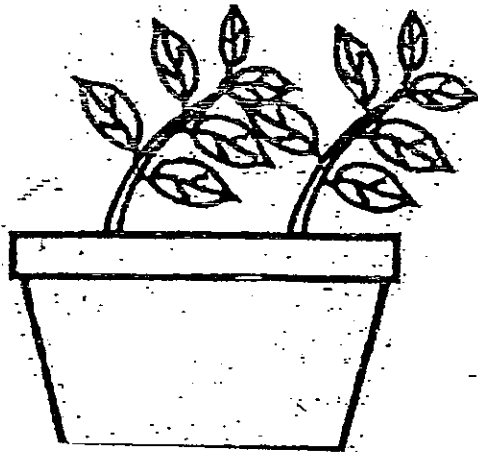
Cindy: Animal U lays eggs and lives in water only.

Dan: Animal V does not lay eggs and does not live in water only.

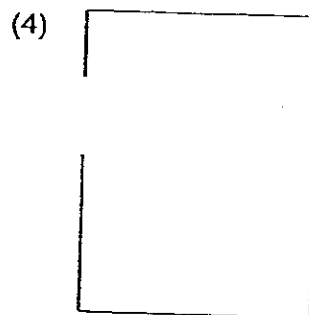
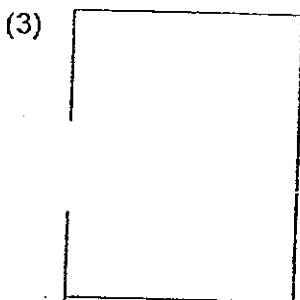
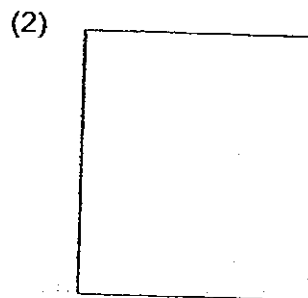
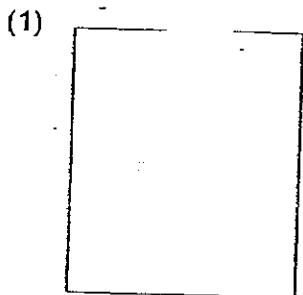
Which of the above pupil(s) has/have made the correct statements?

- (1) Ben only
- (2) Cindy only
- (3) Ann and Cindy only
- (4) Ben and Dan only

17. Susan placed a pot of plant in a black box. After a month, she observed the plant in the pot growing as shown below.

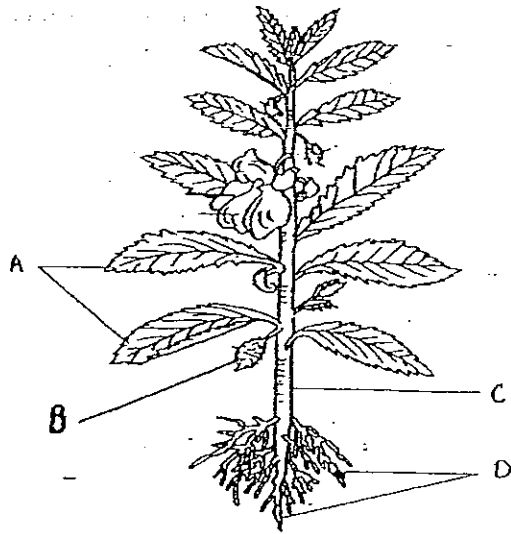


Which one of the following correctly shows the box in which the plant was placed?



( )

18. The picture below shows a plant.



Part	Function
A	Makes food for the plant.
B	Produces seeds for the plant.
C	Holds the plant firmly to the ground.
D	Absorbs water for the plant.

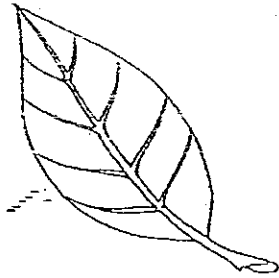
Which of the plant parts above are matched with the incorrect functions?

- (1) A and B
- (3) B and C

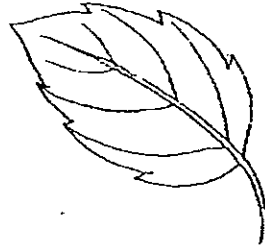
- (2) A and D
- (4) B and D

( )

19. The diagram below shows Leaf X and Leaf Y.



Leaf X



Leaf Y

From what you observe in the diagram, which one of the following comparisons between the two leaves is correct?

- (1) Leaf X and Leaf Y are thick and juicy.
- (2) Leaf X and Leaf Y have hairy surfaces.
- (3) Leaf X is oval in shape while Leaf Y is heart-shaped.
- (4) Leaf X is entire-edged while Leaf Y is toothed-edged.

( )

20. We eat certain plant parts. The table below shows the edible parts of certain plants.

	Plant	Plant Parts			
		Flower	Leaf	Fruit	Stem
(A)	Cabbage	√			
(B)	Broccoli		√		
(C)	Sugar cane				√
(D)	Lady's Finger			√	

Which of the following edible plant parts have been matched correctly?

- (1) A and B
- (2) A and C
- (3) B and C
- (4) C and D

( )

21. Jane's mother bought vegetable 'X' from the supermarket. Some of the characteristics of the vegetable were:

- smooth texture
- has many seeds
- small and round
- skin is red in colour

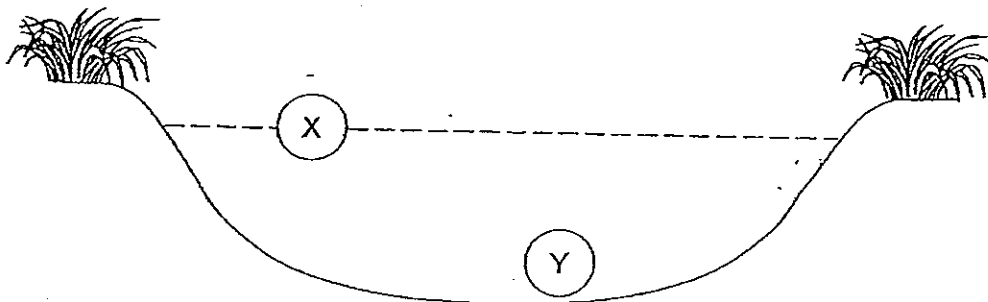
Which of the following vegetables can 'X' be?

- (1) chilli
- (3) tomato

- (2) brinjal
- (4) radish

( )

Refer to the diagram and answer Questions 22 and 23.  
The diagram below shows a section of a pond.



22. What characteristics would a plant have if it was found in part X of the pond?

- (1) It bears flowers.
- (2) It has a strong stem.
- (3) It has waterproof leaves.
- (4) It has roots growing to the bottom of the pond.

( )

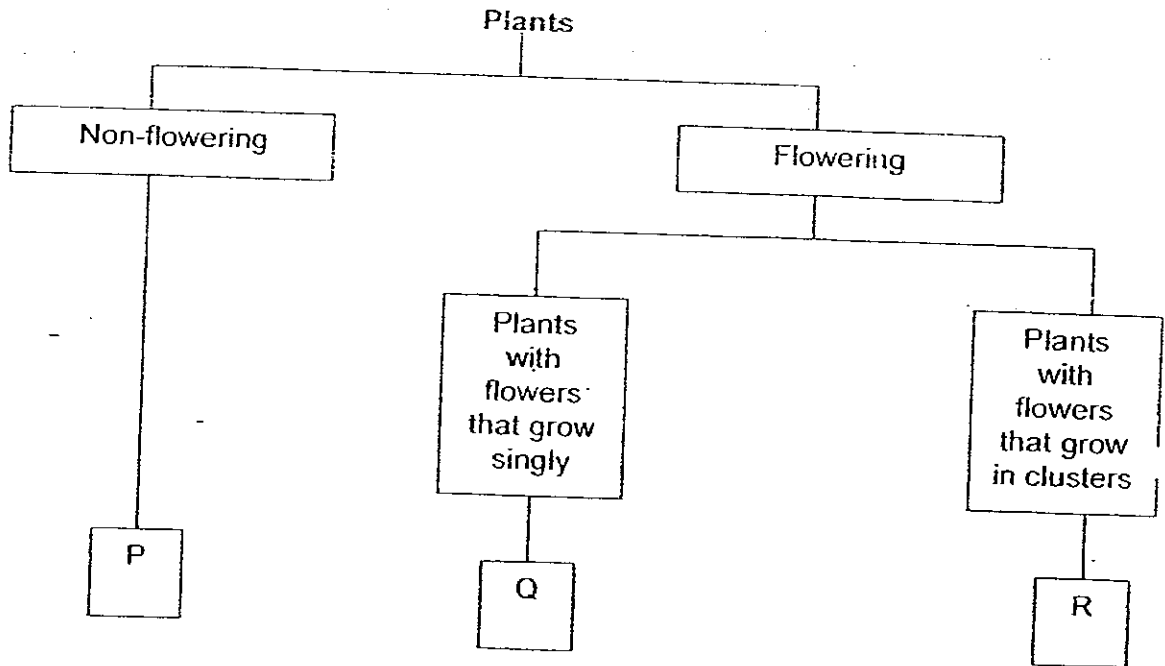
23. Which one of the following plants can be found in Part Y of the pond?

- (1) cattail
- (3) elodea

- (2) duckweed
- (4) arrowhead

( )

24. Study the classification diagram below

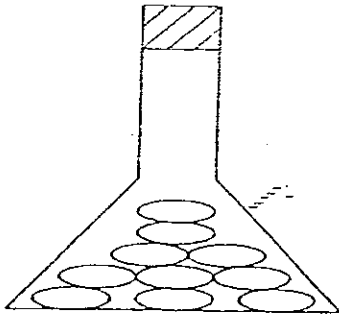


Which one of the following would P, Q and R most likely be?

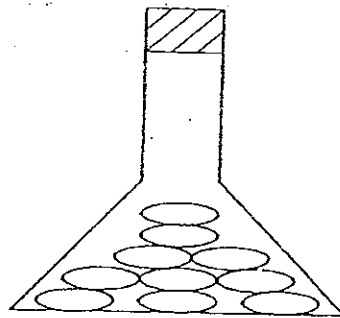
	P	Q	R
(1)	bird's nest fern	bougainvillea	sunflower
(2)	grass	Rafflesia	frangipani
(3)	stag's horn fern	jasmine	rose
(4)	ladder fern	hibiscus	ixora



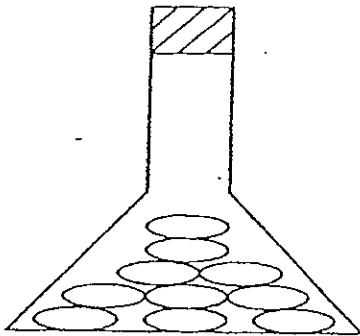
25. Sam placed four containers of cooked and uncooked rice in different conditions as shown below.



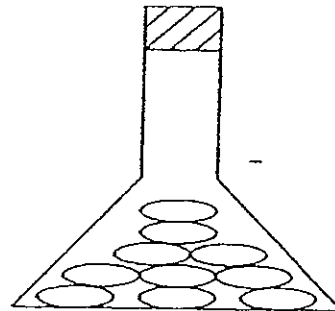
**A**  
cooked rice in freezer



**B**  
cooked rice in dark cupboard



**C**  
cooked rice in room temperature



**D**  
uncooked rice in room temperature

After three days, he observed that only the cooked rice in flask B and flask C had decomposed.

Which of the following can be concluded from the above experiment?

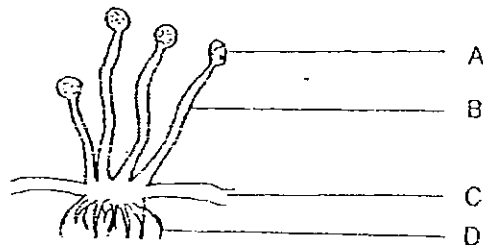
- A: Decomposers need light.
- B: Decomposers need warmth.
- C: Decomposers need moisture.

- (1) A only
- (3) B and C only

- (2) A and B only
- (4) A, B and C

( )

26. Study the diagram of bread mould below.



Mouldy bread

Which part (A, B, C or D) enables the bread mould to reproduce?

- (1) A
- (2) B
- (3) C
- (4) D

( )

Read the following to answer Questions 27 and 28.  
Shanti bought a do-it-yourself mushroom growing kit.

27. Which of the following places should she put her kit in order to harvest the most mushrooms?

- A: Kitchen
- B: Bathroom
- C: Open garden
- D: Air-conditioned room

- (1) A and B
- (3) B and D

- (2) B and C
- (4) C and D

( )

28. Shanti recorded the following statements.

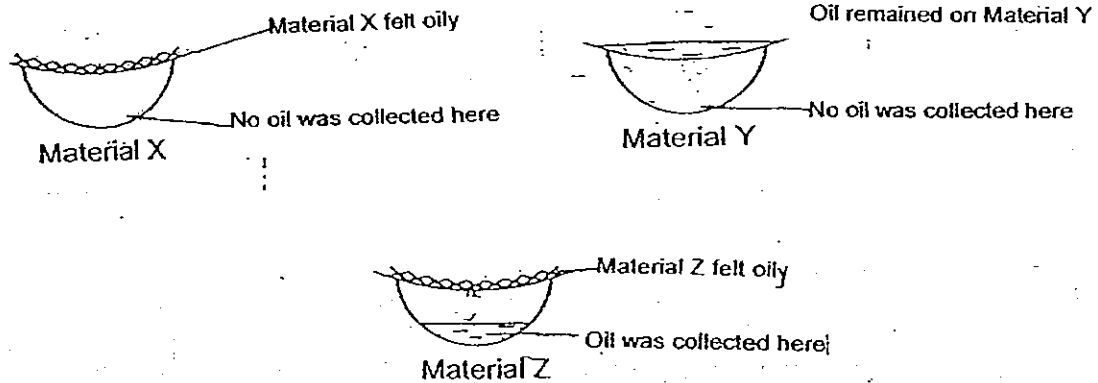
- A: Harvested the mushroom.
- B: Watered the kit two times a day.
- C: Little mushroom appeared on the surface of the kit.
- D: The mushroom absorbed the nutrients from the kit.

Which one of the statements above is an observation?

- (1) A
  - (2) B
  - (3) C
  - (4) D
- ( )

29. Which of the following is classified correctly?

Jane placed three sheets made of different materials, X, Y and Z, over the mouth of three plastic containers. She then poured a tablespoon of oil onto each material. She observed the following.

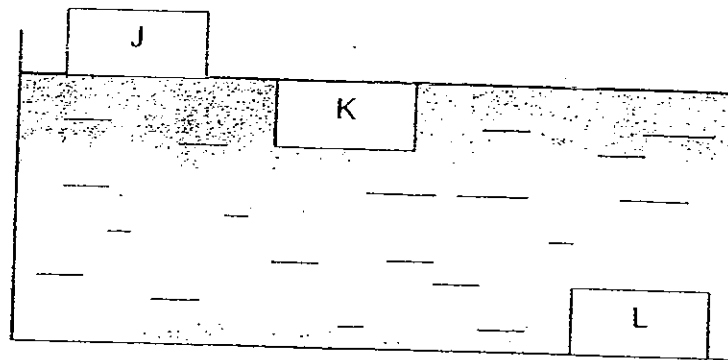


Which of the following conclusions were correct?

- A: Material Z absorbs the most oil.
- B: Material Y absorbs the least oil.
- C: Material X absorbs more oil than Material Z

- (1) A and B only
  - (2) B and C only
  - (3) A and C only
  - (4) A, B and C
- ( )

30. Peter placed Object J, Object K, and Object L in a tank of water. The three objects were made of different materials – styrofoam, wood and metal. The diagram below shows the position of the three objects in the tank of water.



Based on your observations, identify Object J, Object K and Object L.

	Object J	Object K	Object L
(1)	wooden chopsticks	styrofoam ball	metal ruler
(2)	styrofoam ball	wooden chopsticks	metal ruler
(3)	wooden chopsticks	metal ruler	styrofoam ball
(4)	metal ruler	wooden chopsticks	styrofoam ball

( )

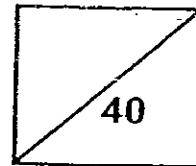
End of Booklet A



Rosyth School  
First Semestral Assessment for 2008  
SCIENCE  
Primary 3

Name: \_\_\_\_\_

Total  
Marks:



Class: Pr \_\_\_\_\_ Register No. \_\_\_\_\_ Duration: 1 h 30 min

Date: 12<sup>th</sup> May 2008 Parent's Signature: \_\_\_\_\_

---

---

## Booklet B

Instructions to Pupils:

1. For questions 31 to 46, write your answers in the spaces given in this Booklet.

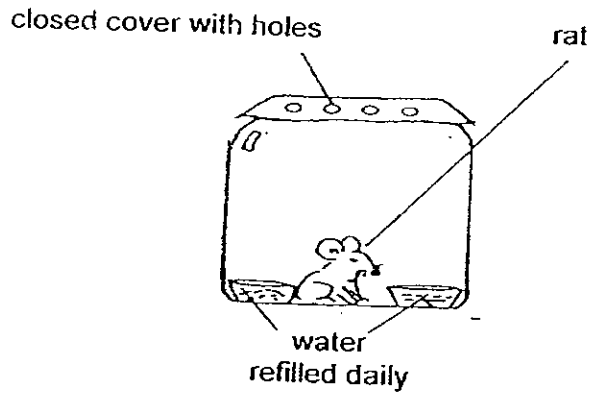
\* This booklet consists of 15 pages.

This paper is not to be reproduced in part or whole without the permission of the Principal.

**BOOKLET B (40 MARKS)**

For questions 31 to 46, write your answers in this booklet.

31. A rat was placed in a jar as shown in the set-up below.

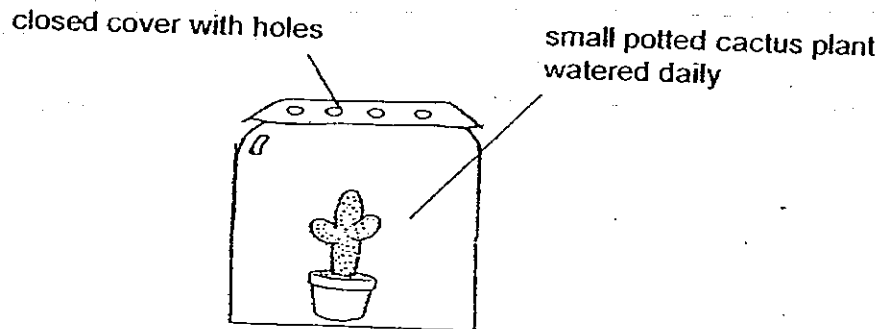


(a) After one month, do you think the rat will still be alive? Give a reason for your answer. (1m)

---

---

(b) If the rat was replaced by a small potted cactus plant as shown below, will it still be alive after one month? Give a reason for your answer. (1m)

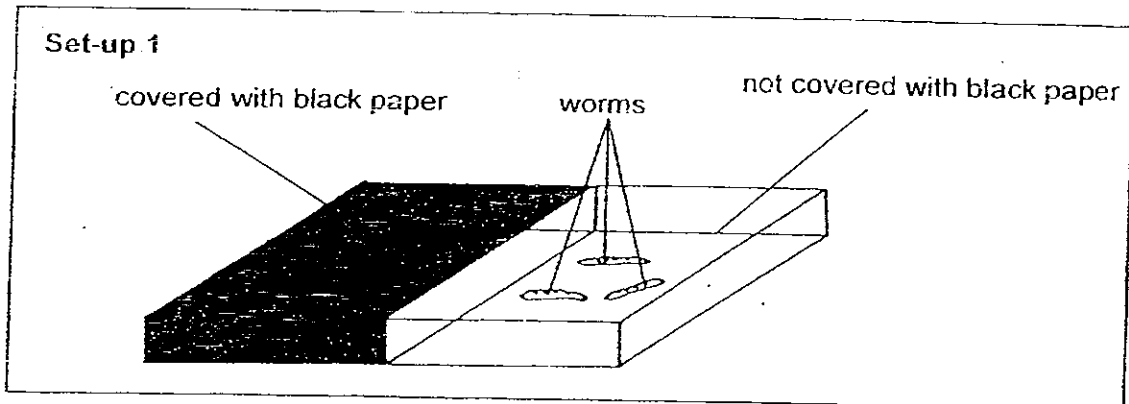


---

---

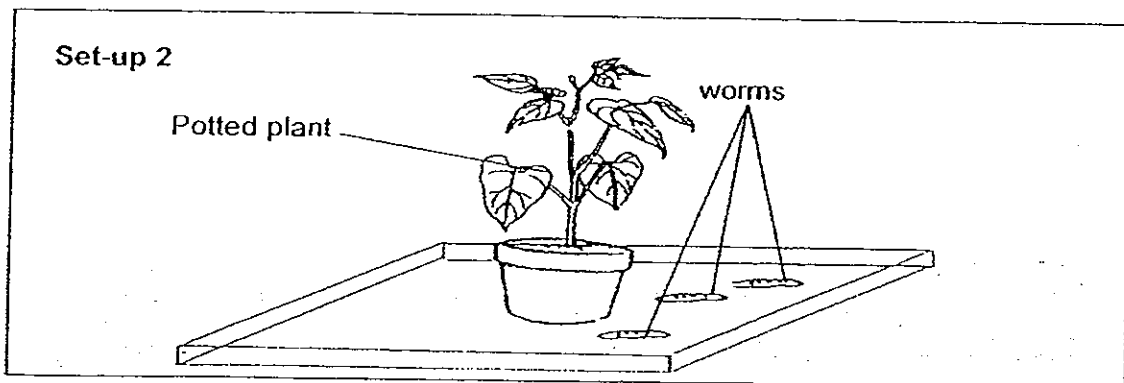
---

32. Kok Meng covered one half of a box with black paper. He placed some worms in the other half without any black paper as shown below.



He left the box in the garden during the day. After a while, Kok Meng discovered that the worms had crawled to the covered part of the box.

Kok Meng then placed the worms in the set-up as shown below.



- (a) Which part of the potted plant would the worms most likely be found after half an hour? (1m)

---

---

- (b) Support your answer in part (a) using the observation Kok Meng made in Set-up 1 (1m)

---

---

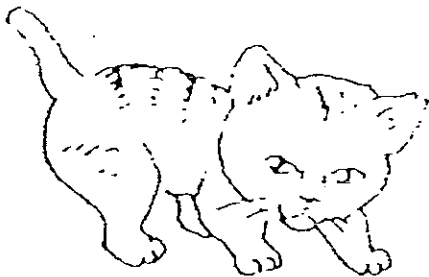
33. The table below shows four plants (of the same kind) being grown under different conditions.

Plants	Conditions		
	Air	Water	Sunlight
A	Yes	Yes	Yes
B	Yes	Yes	No
C	No	Yes	Yes
D	No	No	No

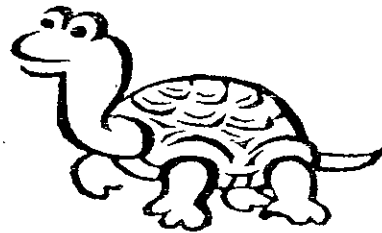
- (a) Which plant will survive the longest? (1m)
- \_\_\_\_\_
- (b) Which plant will most likely die first? (1m)
- \_\_\_\_\_
- (c) From the above data, state one similarity in the conditions given to Plant A and Plant B. (1m)
- \_\_\_\_\_
- \_\_\_\_\_



34. Look at the two animals shown below.



Kitten



Terrapin

Based on only what you see from the pictures above, state one similarity and one difference between the two animals. (Do not compare their shapes or sizes) (2m)

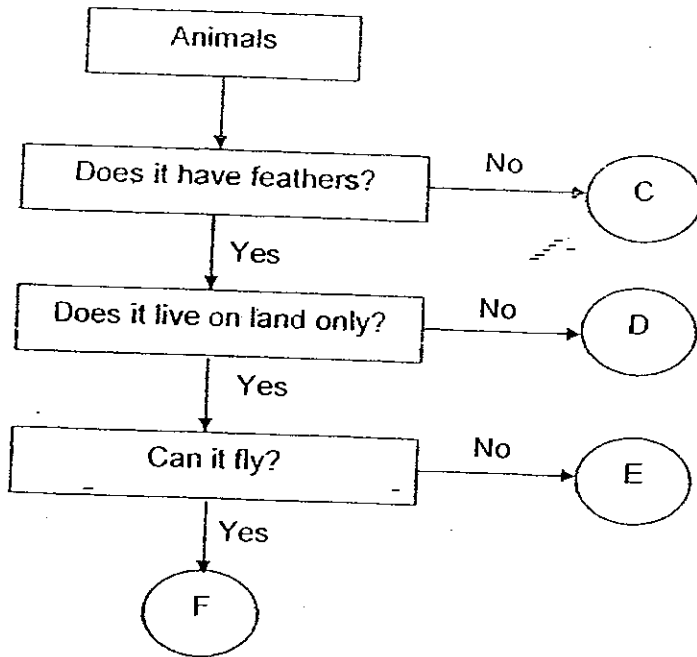
(a) Similarity: \_\_\_\_\_

\_\_\_\_\_

(b) Difference: \_\_\_\_\_

\_\_\_\_\_

35. Study the flowchart below.



(a) Which of the above letters best represent the following animals? (2m)

(i) Bee: \_\_\_\_\_

(ii) Kiwi: \_\_\_\_\_

(iii) Eagle: \_\_\_\_\_

(iv) Duck: \_\_\_\_\_

(b) From the flowchart above, state one difference between Animal E and Animal F. (1m)

---

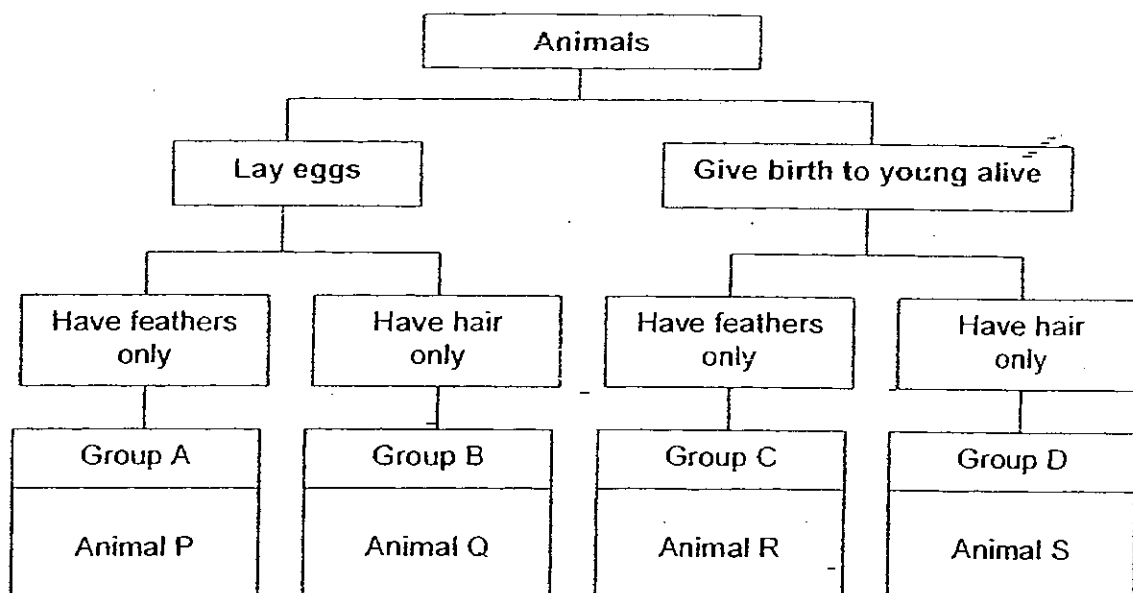
---

(c) Maria said that 'D' must be an insect. Do you agree with Maria? Support your answer with a reason. (1m)

---

---

36. Study the classification diagram below.



(a) Using the information from the above classification diagram, regroup the above animals (P, Q, R and S) into the table below. (1m)

Animals that have feathers only	Animals that have hair only

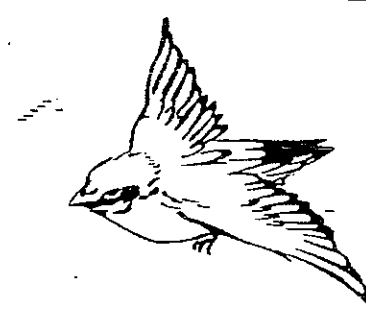
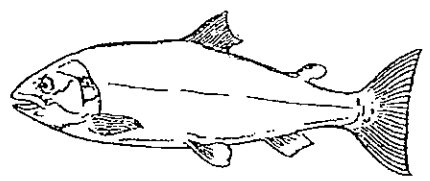
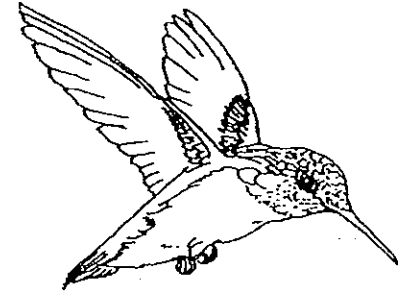
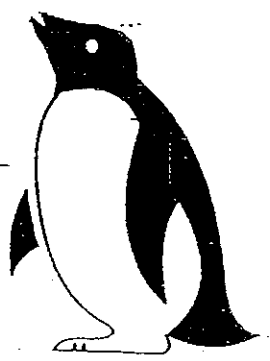
(b) Explain why chicken cannot be placed under Group C. (1m)

---



---

37. Tom had classified four animals according to the animal groupings shown in the table below. However, his teacher told him that one of the animals had been grouped wrongly.

Animals	
Birds	Fishes
 Sparrow	 Salmon
 Hummingbird	 Penguin

- (a) Which of the above animals had been grouped wrongly? (1m)

---

- (b) Give a reason for your answer in (a). (1m)

---

---

38. The table below shows some characteristics of four imaginary animals P, Q, R and S. A tick (✓) shows the animal has the characteristic.

Animals	Number of legs		Plant eater	Has feathers	Give birth to young
	2	4			
P		✓			✓
Q	✓			✓	
R		✓	✓	✓	✓
S	✓			✓	✓

- (a) Describe the characteristics of Animal R. (1m)

---



---

- (b) If some eggs were found near the four animals, whose eggs could they be? Give a reason for your answer. (2m)

---



---

39. The diagram below shows a picture of a money plant.



Money plant

- (a) Describe the characteristic of the stem of the money plant. (1m)

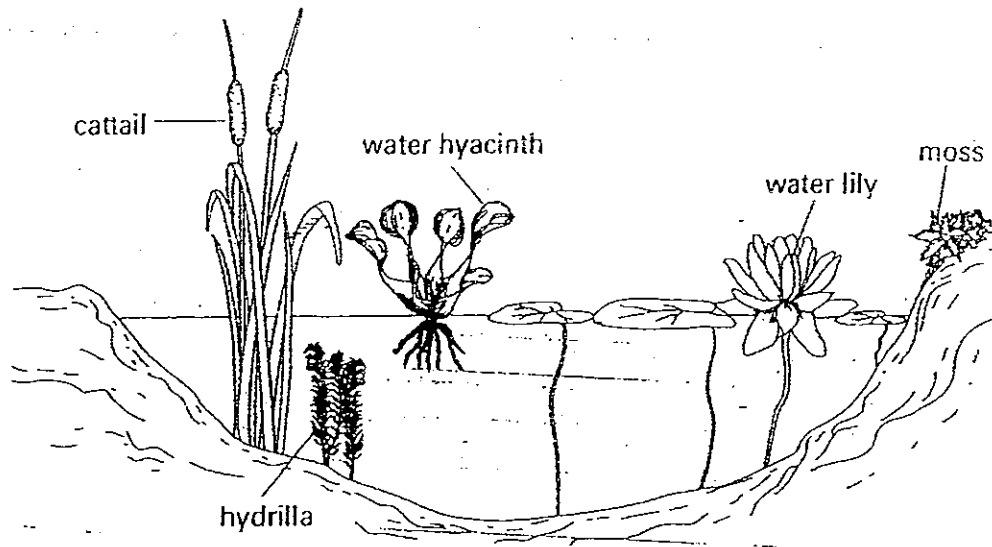
---

- (b) Identify the shape of the leaves of the money plant. (1m)

---



41. Look at the picture below.



(a) Which one of the above plants is different from the others based on the place where they are found? (1m)

---

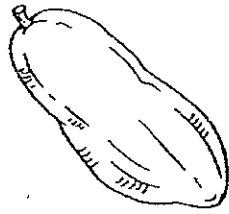
---

(b) Give a reason for your choice in part (a). (1m)

---

---

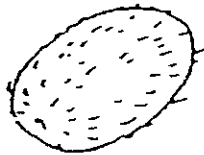
42. Study the fruits shown below.



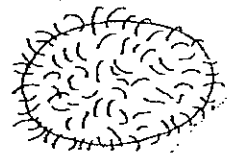
papaya



mango



kiwi fruit



rambutan

(a) Classify the fruits into two groups, A or B. Write the names of the fruits in the table given below. (2m)

Group A	Group B

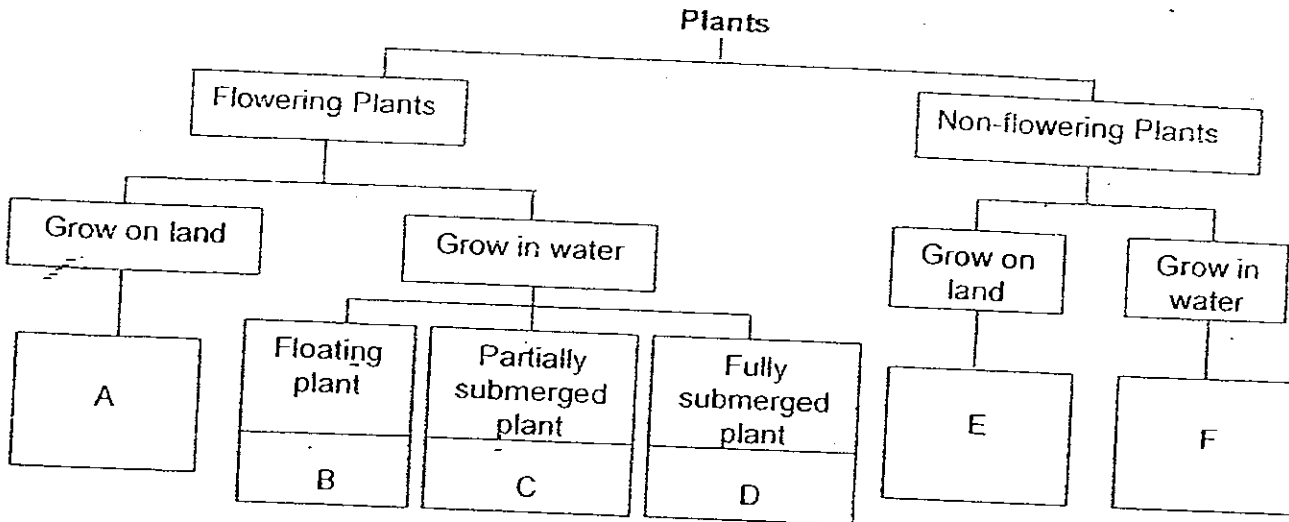
(b) Write suitable headings for your classification. (1m)

Group A: \_\_\_\_\_

Group B: \_\_\_\_\_



43. Study the classification diagram below.



(a) In which group (A, B, C, D, E or F) would you place the cucumber plant? Give reasons for your answer. (1m)

---



---

(b) Which group of plants is most likely to reproduce by spores? (1m)

---

(c) If you want to put plants in your fish tank that are completely under water, from which group will you choose from? (1m)

---

Read the description of plant X below.

Plant X grows on land. It has heart-shaped leaves and a strong stem.

(d) Would you be able to place plant X in the above classification chart? Explain why. (1m)

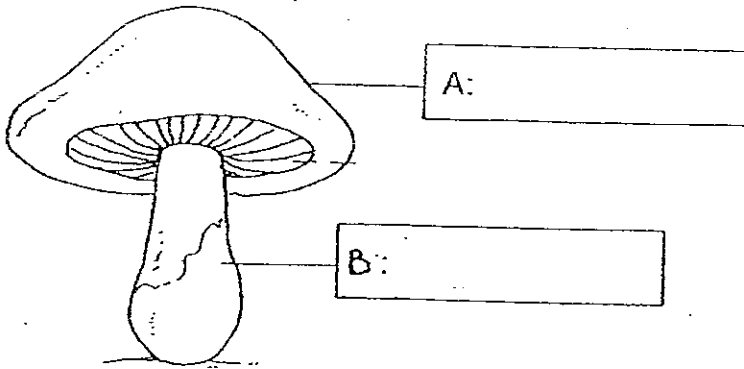
---



---

44. The picture below shows a mushroom.

(a) Identify the parts marked 'A' and 'B'. (2m)

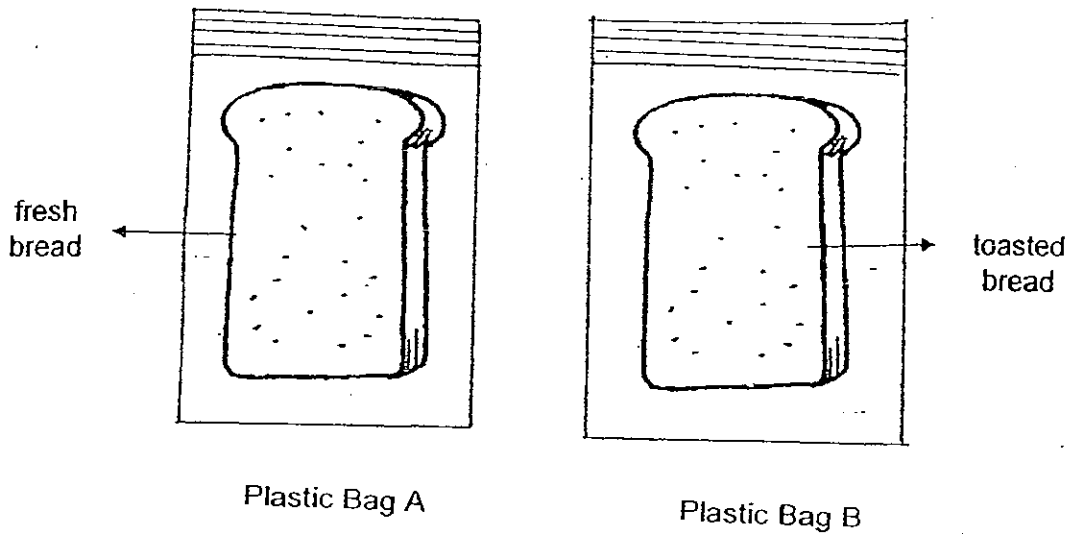


Mushroom

(b) Where are the spores found? (1m)

---

45. Peter sprinkled some water on a piece of fresh bread and placed it in a sealed plastic bag labelled A. He placed a piece of toasted bread in another sealed plastic bag and labelled it B.



- (a) State ~~two~~ observations Peter would make in plastic bag A after a few days. (1m)

---

---

Peter

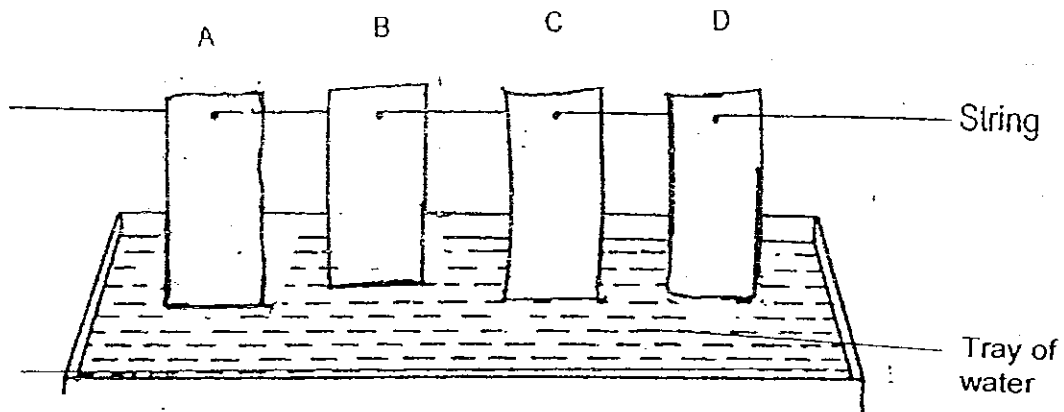
Ali found no mould on the bread in plastic bag B after a few days.

- (b) What prevented the mould from growing on the bread? (1m)

---

---

46. David placed 4 strips of different materials in a tray of water as shown in the diagram below.



He measured the height of the water level of the materials on Day 2. The results were recorded as shown below.

Material	Height of water level(cm)	
	Day 1	Day 2
A	0	20
B	0	45
C	0	50
D	0	0

- (a) Which property of the material was tested in the above experiment? (1m)

---

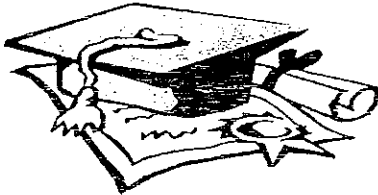


---

- (b) Based on the data given, which material would be the most suitable for making a towel? (1m)

---

End of Paper



# ANSWER SHEET

EXAM PAPER 2008

SCHOOL : ROSYTH PRIMARY SCHOOL  
SUBJECT : PRIMARY 3 SCIENCE

TERM : SA 1

Q1	Q2	Q3	Q4	Q5	Q6	Q7	Q8	Q9	Q10	Q11	Q12	Q13	Q14	Q15	Q16	Q17
1	3	4	2	4	2	1	2	4	3	2	4	1	4	1	4	2

Q18	Q19	Q20	Q21	Q22	Q23	Q24	Q25	Q26	Q27	Q28	Q29	Q30
3	4	4	3	3	3	4	3	1	1	3	2	2

31)a)No, as there is no food.

b)Yes, it will be alive because it can make its own food.

32)a)In the soil.

b)The worms crawled to the covered part of the box showing that they did not like light.

33)a)Plant A.

b)Plant D.

c)Both plants have air and water.

34)a)Both the kitten and terrapin have four legs.

b)The terrapin has shell as an outer cover in but the kitten has fur as an outer covering.

35)a)i)C ii)E iii)F iv)D

b)Animal F can fly but Animal E cannot.

c)No. If it was an insect it would not have feathers.

36)a)Animal P  
Animal R

Animal Q  
Animal S

b)A chicken lays eggs, but does not give birth to young alive.

37)a)The penguin.

b)It is not a fish.

38)a)It has 4 legs, is a plant eater has feathers and gives birth to its young.

b)Animal Q's eggs. In the chart it said that Animal Q does not give birth to its young, so it must lay eggs.

39)a)It is weak.

b)They are heart-shaped.

40)a)T b)F c)T d)T

41)a)The mass.

b)The mass grows on land, where as the other plants grow in water.

42)a)A: Kiwi fruit, rambutan B: papaya, mango

b)A: Hairy skin B: Smooth skin

43)a)In group A. The cucumber plant has flowers and grows on land.

b)Group E.

c)I would choose from group D.

d)No. I do not know if it is non-flowering or not.

44)a)A: cap B: stalk b)In the gills

45)a)He would find out that the bread has turned mouldy and will no longer be white.

b)All the moisture from the bread was taken out, and mould needs damp place to grow.

46)a)How much water could each material could soak up.

b)Material C.