

Tao Nan School
Primary 3 Science Mid-year Examination 2008

Name : _____

Date : 8 May 2008

Class : Pr 3 ()

Time : 7.45 a.m. to 9.00 a.m.

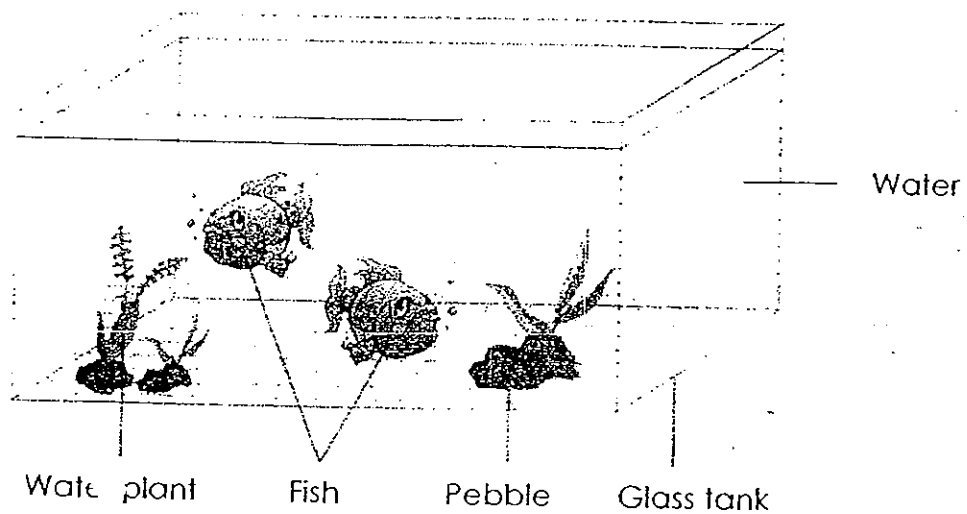
Parent's Signature : _____

Marks : _____ / 100

Section A (30 x 2 marks)

For each question, choose the most suitable answer and shade its correct oval (1, 2, 3 or 4) on the Optical Answer Sheet.

1. Study the picture below.



Based on the picture, which of the following statements is correct?

- (1) There are two non-living things.
- (2) There are three living things.
- (3) Two fish are living in the tank.
- (4) All the living things in the tank eat food.

2. A tiger hunts a deer. What does this tell us?

- (1) Living things breathe air.
- (2) Living things need food.
- (3) Living things need sunlight.
- (4) Living things make food.

3. John classified some living things in his nature book. Which one of the following groups is not correct?

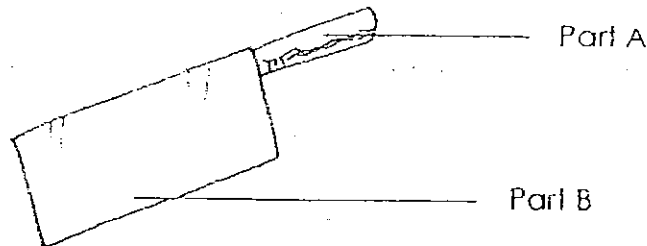


4. How is the mushroom similar to the Bracket Fungus?

- A : They cannot make their own food.
- B : They reproduce by spores.
- C : They have leaves, stems and roots.
- D : They do not have chlorophyll.

- (1) A and D only
- (2) B and C only
- (3) A, B and D only
- (4) B, C and D only

5. Look at the chopping knife below.



What is it made of?

	Part A	Part B
(1)	Glass	Ceramic
(2)	Metal	Wood
(3)	Wood	Metal
(4)	Ceramic	Glass

6. Which of the following makes a complete plant system?

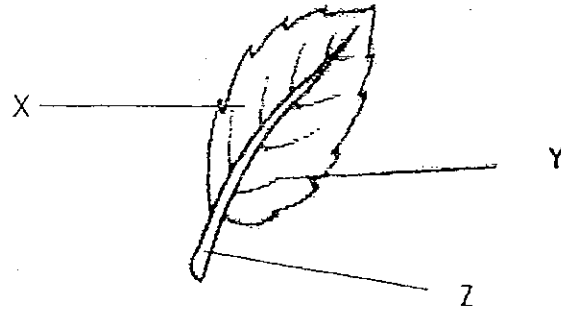
- (1) Leaves, stems and fruit
- (2) Leaves, stems and roots
- (3) Fruit, flowers and stems
- (4) Flowers, stems and roots

7. Which of the following are functions of leaves?

A : They take in air.
B : They absorb water.
C : They absorb mineral salts.
D : They make food for the plant.

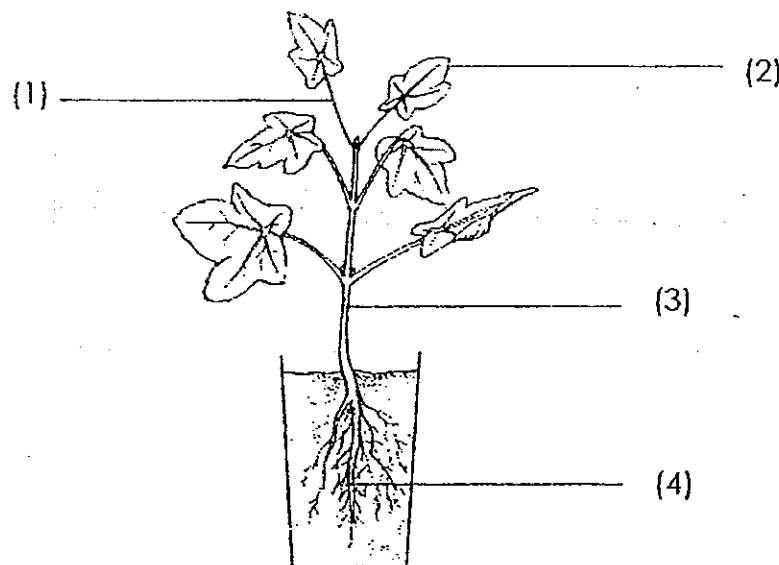
- (1) A and B only
- (2) A and D only
- (3) B and C only
- (4) C and D only

8. Name the parts of the leaf labelled X, Y and Z.

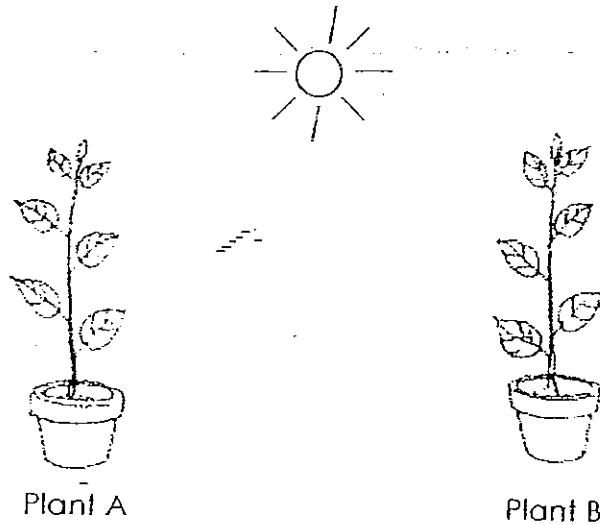


	X	Y	Z
(1)	Leaf Vein	Leaf Blade	Leaf Stalk
(2)	Leaf Stalk	Leaf Vein	Leaf Blade
(3)	Leaf Blade	Leaf Vein	Leaf Stalk
(4)	Leaf Blade	Leaf Stalk	Leaf Vein

9. In the plant below, which part absorbs mineral salts and water?



10. Two pots of plants are left in the garden. Plant A is watered daily but Plant B is not watered at all.



If it does not rain at all, what will happen to the two plants after two weeks?

- (1) Plant A will die but Plant B will survive.
 - (2) Plant A will survive but Plant B will die.
 - (3) Both of the plants will survive.
 - (4) Both of the plants will die.
11. Which of the following is **true** about stems of trees?
- (1) They take in air.
 - (2) They make food.
 - (3) They hold the plant firmly to the ground.
 - (4) They hold the leaves up to receive sunlight.
12. The leaves of a mimosa plant closed after being touched. Which characteristic of plants does this show?
- (1) Plants grow.
 - (2) Plants reproduce.
 - (3) Plants need air, sunlight and water.
 - (4) Plants respond to changes around them.

13. Which of the following statements about roots are **true**?

A : Roots make food for the plant.

B : Roots hold the plant firmly to the ground.

C : Roots take in water and minerals from the soil.

D : Roots help the plant to move from one place to another.

(1) A and B only

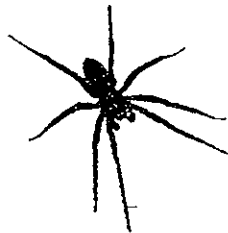
(2) A and D only

(3) B and C only

(4) C and D only

14. Which of the following is the odd one out?

(1)



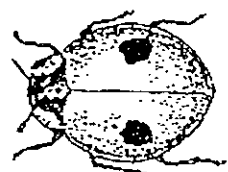
Spider

(2)



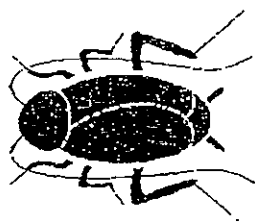
Butterfly

(3)



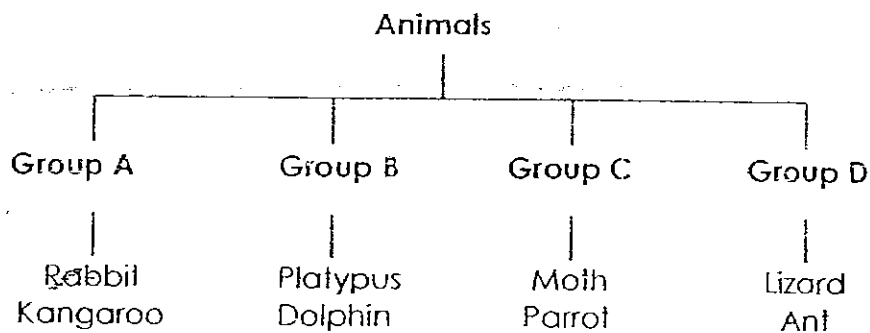
Beetle

(4)



Cockroach

15. Study the classification chart below.



The animals in the classification chart above are grouped according to _____.

- (1) how they move
- (2) what they feed on
- (3) how they reproduce
- (4) where they are found

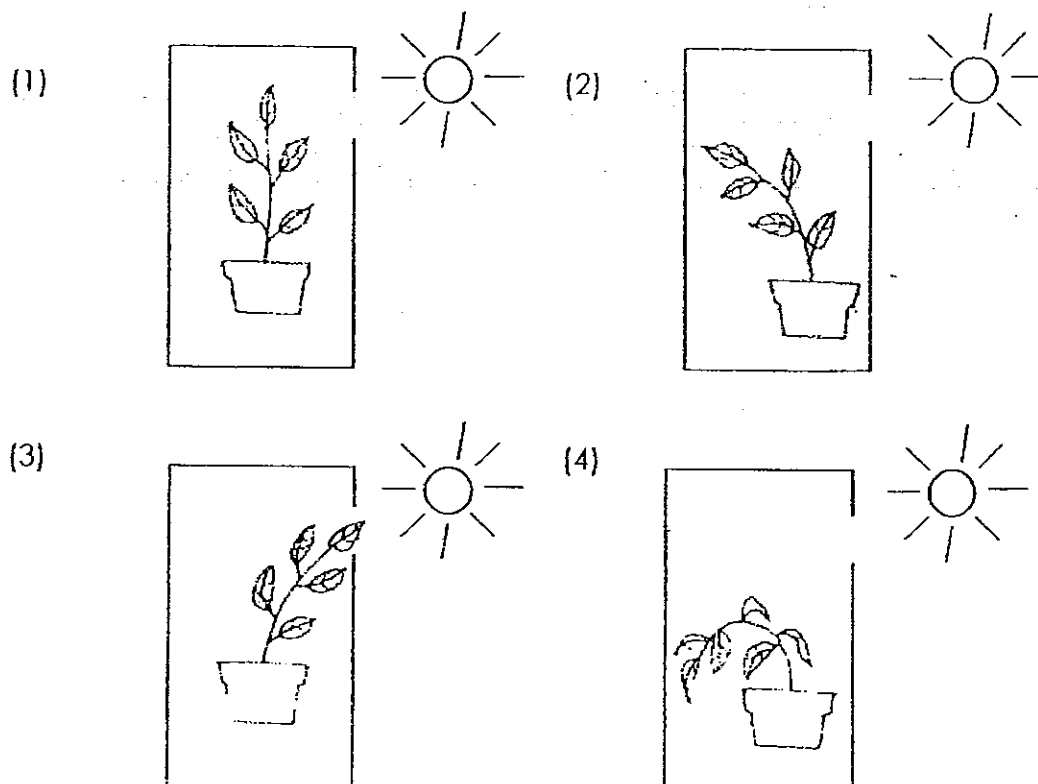
16. Look at the table below. Which is correct?

	Object	Property of Object	Material used
(1)	Cloth	Flexible	Plastic
(2)	Brick	Soft	Clay
(3)	Nail	Hard	Metal
(4)	Eraser	Strong	Wood

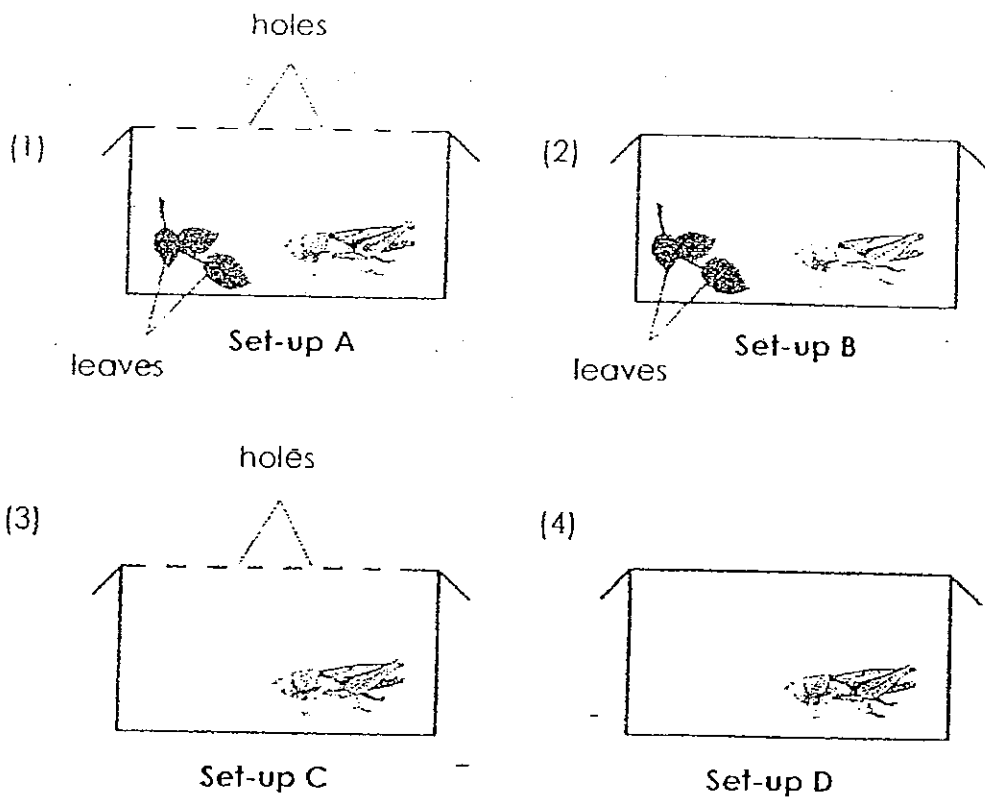
17. In the table below, which of the following object is **not** matched according to the material it is made of?

		Fabric	Glass	Metal	Plastic	Wood
(1)	A cup		✓	✓	✓	
(2)	A comb				✓	✓
(3)	A pillow	✓				
(4)	A window grille	✓	✓			

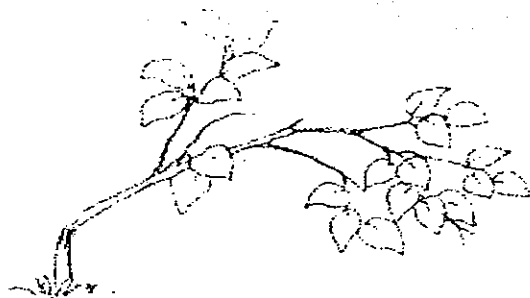
18. The plants below are placed in four similar wooden boxes. Which shows how the plant would respond to sunlight after a few days?



19. The set-ups below are left untouched for several days. In which set-up will the grasshoppers survive longest?



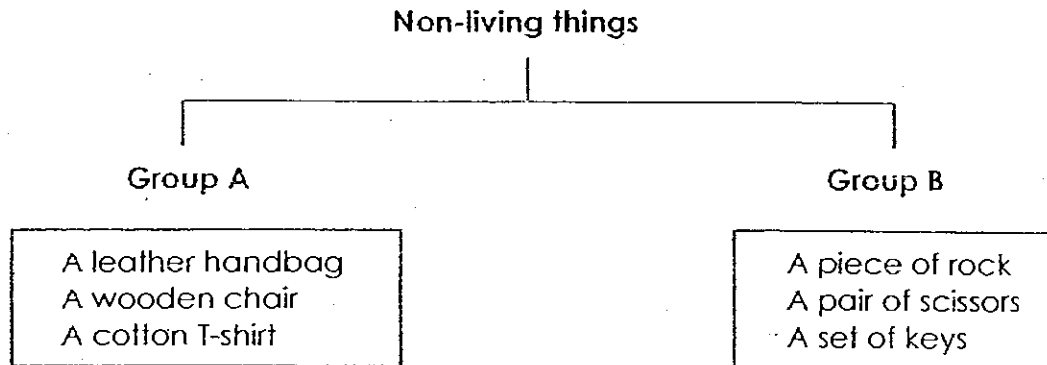
20. The stem of a plant snapped as shown below. Three days later, the plant died.



The plant died because the roots cannot _____.

- (1) store food for the plant
- (2) hold the plant firmly to the ground
- (3) absorb water and mineral salts for the plant
- (4) transfer water and mineral salts to the leaves

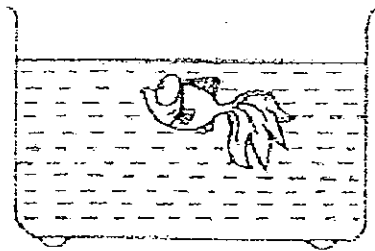
21. Study the classification chart below.



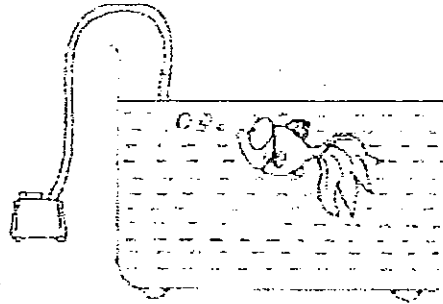
Which of the following can be classified under Group A?

- (1) A coin
 - (2) A housefly
 - (3) A piece of newspaper
 - (4) A stalk of plastic flower
22. Some single-celled organisms were placed in a beaker of water and left in the open for two weeks. It was observed that the number and size of organisms increased after two weeks. Which process(es) could have caused the changes?
- (1) Growth only
 - (2) Reproduction only
 - (3) Food and growth
 - (4) Growth and reproduction

23. Wendy placed a fish each into Bowl A and Bowl B.



Bowl A



Bowl B

The following day, she notices that the fish in Bowl A constantly swims near the surface of the water. What does this show?

The fish needs _____.

- (1) food
- (2) sunlight
- (3) oxygen
- (4) carbon dioxide

24. Sifi prepared four identical jars and provided them with the basic necessities as shown in the table below.

Jar	Is there water?	Is there air?	Is there food?	Is there sunlight?
(1)	Yes	Yes	Yes	No
(2)	No	Yes	No	Yes
(3)	No	No	Yes	Yes
(4)	Yes	Yes	No	Yes

In which jar should Sifi place a plant so that it can survive well?

25. Some fruits are classified into two groups as shown below.

Group A	Group B
Mango	Papaya
Plum	Watermelon
Longan	Pear
X	Y

What can X and Y be?

	Group A	Group B
(1)	Apple	Orange
(2)	Lychee	Coconut
(3)	Honeydew	Banana
(4)	Rambutan	Kiwi

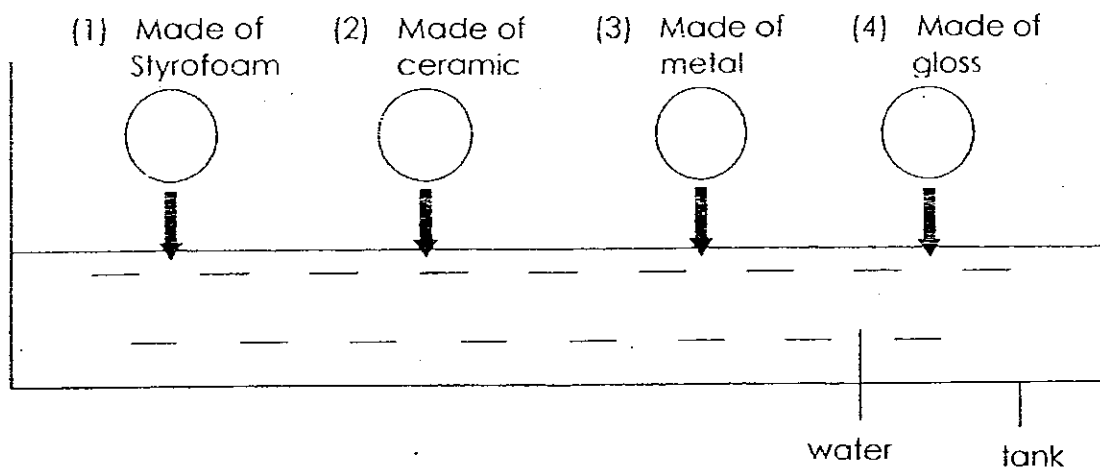
26. In an experiment, Animal X was placed in a tank with some water, some leaves and some flies. For three days, the amount of leaves and the number of flies left in the tank were recorded in the table below.

	Amount of leaves	Number of flies
Day 1	80 g	5
Day 2	50 g	5
Day 3	20 g	5

What would Animal X be?

- (1) Frog
- (2) Lizard
- (3) Mosquito
- (4) Caterpillar

27. Four similar balls made using different materials are placed in a tank of water as shown below. Which will float?

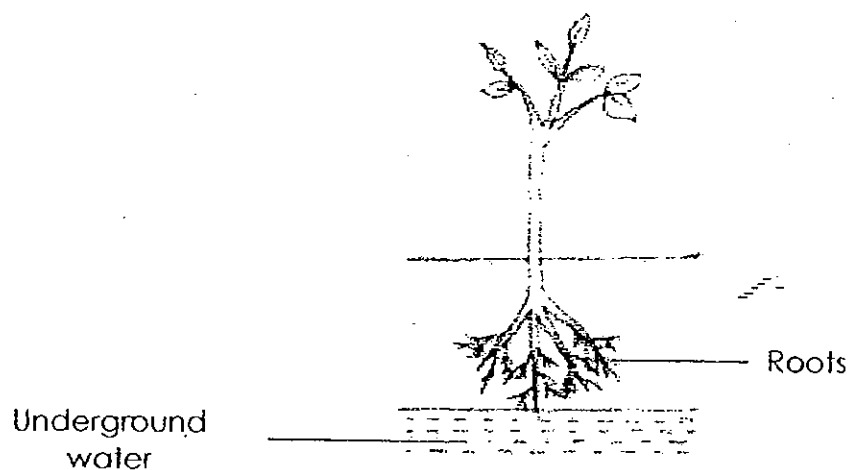


28. Material X can be used to make paper.
Houses and furniture can be made using it.
It comes from a living thing.

What is Material X?

- (1) Metal
 - (2) Wood
 - (3) Plastic
 - (4) Rubber
29. Tom covered a plant with a trash bag. He then recorded the height of the plant daily. What would Tom observe about the plant's height after a week?
- (1) It had increased.
 - (2) It had decreased.
 - (3) It had remained the same.
 - (4) It had decreased and then increased.

30. Study the picture below.



What can be observed about the roots after a few weeks?
The roots will _____.

- (1) die
- (2) remain the same
- (3) grow above the ground
- (4) grow towards the underground water

Tao Nan School
Primary 3 Science Mid-year Examination 2008

Name : _____ (

Date : 8 May 2008

Class : Pr 3 ()

Time: 7.45am to 9.00 am

Parent's Signature : _____

Marks : _____ / 40

Section B (40 marks)

Write your answers in the spaces provided.

31. Study the classification table below.

Group X	Group Y
Ruler	Cat
Teddy bear	Mould
Wooden bench	Rose plant

Give a suitable heading for Group X and Group Y.

(a) Group X : _____ (1 mark)

(b) Group Y : _____ (1 mark)

(c) A watch should be placed in Group _____ (1 mark)

32. Study the pictures below. (2 marks)



Picture A

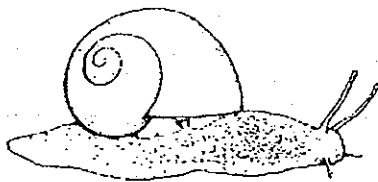


Picture B

(a) Picture A shows that living things need _____

(b) Picture B shows that living things need _____

33. Alex used his finger to touch a snail as shown below.



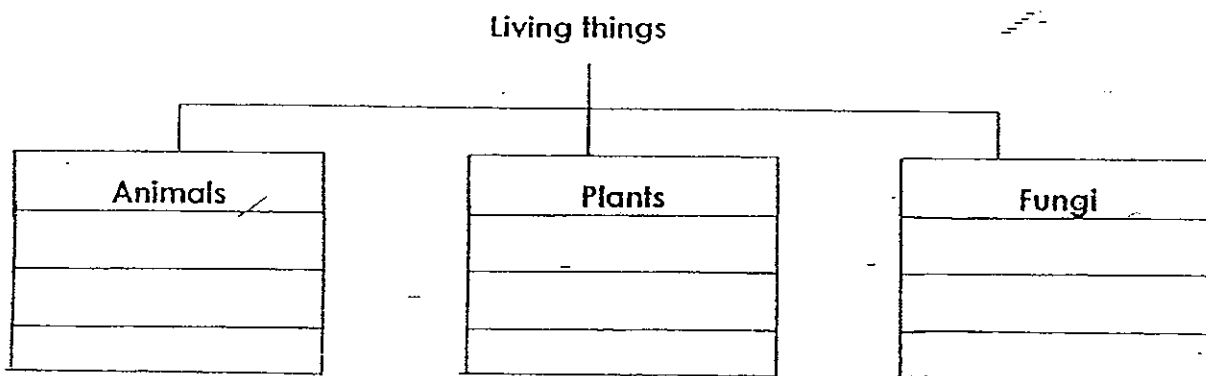
A snail

(a) How do you think the snail will respond? (1 mark)

(b) What characteristic of living things is it showing? (1 mark)

34. Classify the following living things in the classification chart below.
(3 marks)

Living Things		
bee	mushroom	moss
meat	fern	dolphin



35. Based on your **observation** only of the pictures below, state **one** similarity and **one** difference between a housefly and a bird.



A housefly

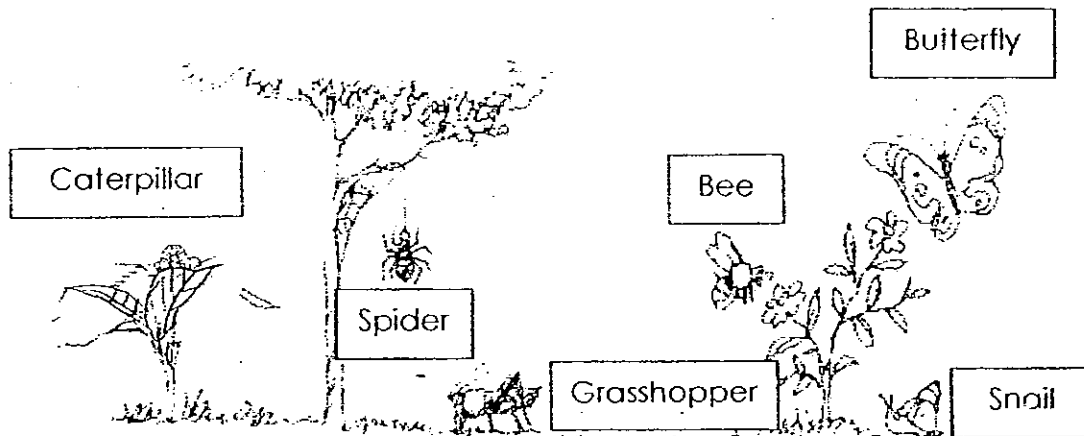


A bird

- (a) Similarity (1 mark)

- (b) Difference (1 mark)

36. The picture below shows a garden.



(a) How many insects can be found in the above picture? (1 mark)

(b) Name **two** animals which are not insects in the above picture. (2 marks)

_____ and _____

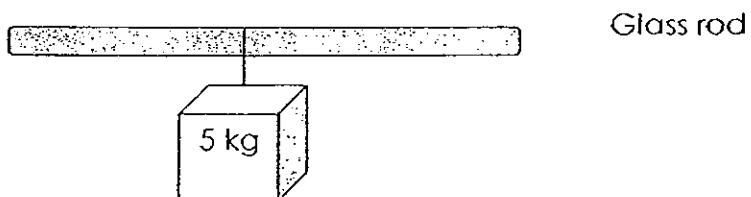
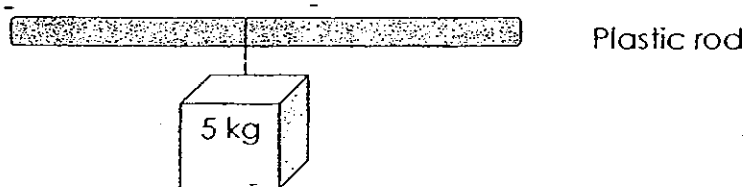
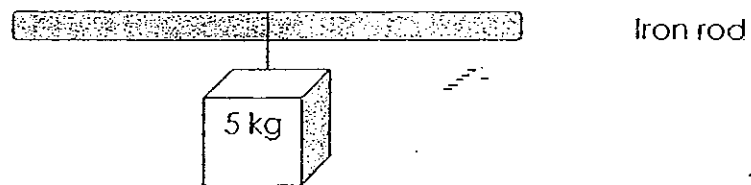
37. Fill in the blanks with the helping words provided. Each helping word can only be used once. (2 marks)

Helping Words

stretched	strong	scratched
properties	flexible	fragile

Materials can be classified according to their physical
 (a) _____. A (b) _____ material does not break easily. A (c) _____ material can be bent without breaking. A hard material cannot be (d) _____ easily.

38. Kim hung a 5 kg weight onto three similar rods, an iron rod, a plastic rod and a glass rod, as shown below. (3 marks)



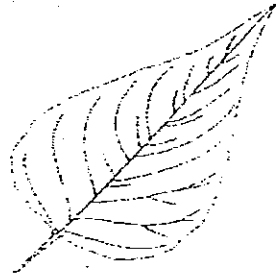
After a few minutes, one rod broke, one bent and one remained as it was.

(a) Which rod broke? _____

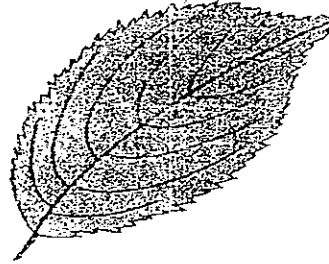
(b) Which rod bent? _____

(c) Which rod remained as it was? _____

39. Based on the picture below, indicate whether each of the statements given below is True, False or Not Possible To Tell. Put a tick (✓) in the correct box. (2 marks)



Leaf A



Leaf B

	Statement	True	False	Not Possible To Tell
(a)	Leaf A has a jagged edge.			
(b)	Leaf B has a smooth edge.			
(c)	Both leaves have network veins.			
(d)	There are tiny openings on the surfaces of the leaves to allow gaseous exchange.			

40. Read the story below.

Rita visited a chicken farm. She saw a hen sitting on some eggs. A few weeks later, when Rita visited the farm again, she saw that the eggs had hatched into chicks.

When Rita tried to pick up one of the chicks, it ran away from her. She then put a bowl of seeds near the chicks. The chicks began eating the seeds.

A few weeks later, during another visit, Rita saw that the chicks were much bigger.

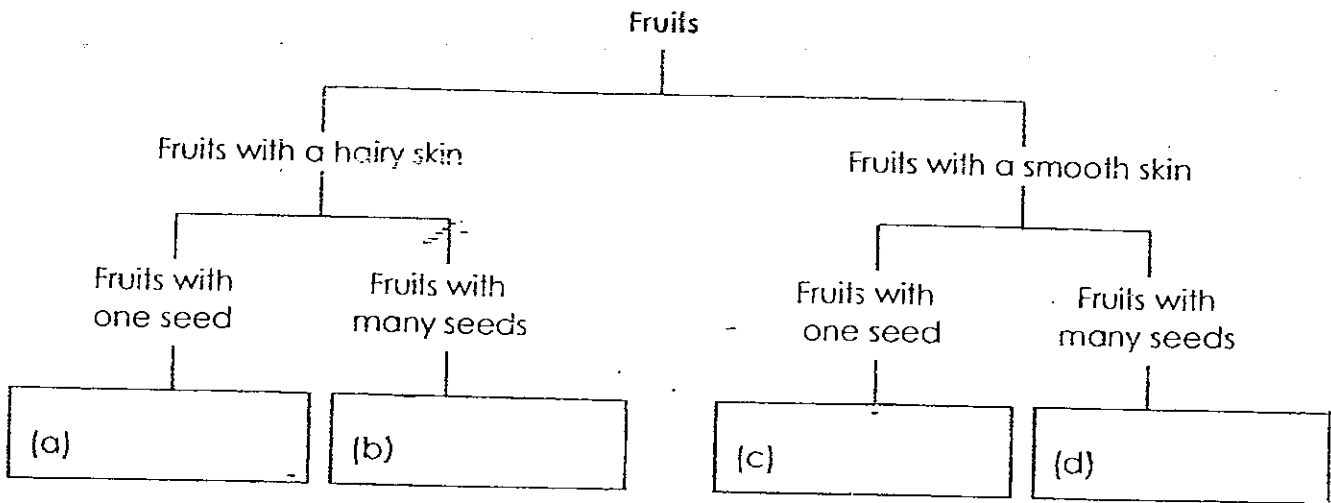
Name **three** characteristics of living things you can infer from this story. (3 marks)

(a) _____

(b) _____

(c) _____

41. Complete the classification chart below with the correct fruit. (2 marks)



42. Study the table below. Name **one** animal for each group. (3 marks)

		Characteristics	Animals
(a)	Group A	Give birth to their young alive Produce milk to feed their young	
(b)	Group B	Have feathers Have beak	
(c)	Group C	Have 3 main body parts Have six legs	

43. Each of the objects below is made of different materials. Write down two materials they are made of and state the property which makes them suitable for that object. (4 marks)

(a)

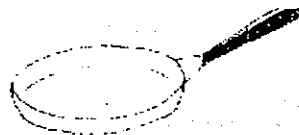
Leather shae



	Material	Property
(i)		
(ii)		

(b)

Frying pan



	Material	Property
(i)		
(ii)		

44. Some water containing red dye was poured into the soil of a potted plant. After a few hours, some parts of the flowers and leaves turned red.

Which of the following statements are correct for the potted plant? Write T if the statement is true and F if the statement is false. (2 marks)

	Statements	T/F
(a)	Water is taken in by the roots.	
(b)	Water is transported to the leaves.	
(c)	Water is transported to the flowers.	
(d)	Water is carried through the stem.	

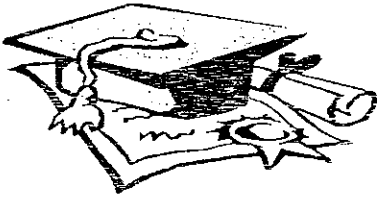
45. (a) What is the function of a leaf? (1 mark)

- (b) What is the function of a flower? (1 mark)

46. Plants make food.

Where is the food transported to? (2 marks)

- (a) _____
- (b) _____
- (c) _____
- (d) _____



ANSWER SHEET

EXAM PAPER 2008

SCHOOL : TAO NAN PRIMARY SCHOOL
SUBJECT : PRIMARY 3 SCIENCE

TERM : SA 1

Q1	Q2	Q3	Q4	Q5	Q6	Q7	Q8	Q9	Q10	Q11	Q12	Q13	Q14	Q15	Q16	Q17
3	2	2	3	3	2	2	3	4	2	4	4	3	1	1	3	4

Q18	Q19	Q20	Q21	Q22	Q23	Q24	Q25	Q26	Q27	Q28	Q29	Q30
3	1	4	3	4	3	4	4	4	1	2	1	4

31)a) Non-living things.

b) Living things

c) X

32)a) food. b) water.

33)a) I think it will with draw its whole body it's the shell.

b) It is showing that living things can respond to changes around them.

34) Animals → bee, dolphin

Plants → fern, moss

Fungi → mould, mushroom

35)a) Both have wings.

b) A housefly has 6 legs but a bird has 2 legs.

36)a) 4

b) Spider and snail.

37)a)Properties b)strong c)flexible d)scratched

38)a)glass rod b)plastic rod c)iron rod

39)a)F b)F c)T d)Not

40)a)They can respond to changes around them.
b)They can reproduce.
c)They can grow.

41)a)rambutan b)kiwi c)mango d)papaya

42)a)cat b)eagle c)ant

43)a)i)rubber It is flexible and waterproof.
ii)leather It is flexible and strong.
b)i)Plastic It is a poor conductor of heat.
ii)metal It is a good conductor of heat.

44)a)T b)T c)T d)T

45)a)It is to make food for the plant.
b)It is to bear fruit for reproduction.

46)a)leaves b)stem c)roots d)flower