



**NAN HUA PRIMARY SCHOOL
SEMESTRAL ASSESSMENT 1 – 2009
PRIMARY 3**

SCIENCE

BOOKLET A

30 Multiple Choice Questions (60 marks)

Total Time for Booklets A and B : 1 hours 45 minutes

INSTRUCTIONS TO CANDIDATES

1. Write your name and index number in the space provided.
2. Do not turn over the page until you are told to do so.
3. Follow all instructions carefully.
4. Answer all questions.
5. Shade your answers in the Optical Answer Sheet (OAS) provided.

Marks Obtained

Booklet A		/ 60
Booklet B		/ 40
Total		/100

Name: _____ () **Class: P 3** _____

Date : 14 May 2009

Parent's Signature: _____

Section A: (30 x 2marks = 60marks)

For each question from 1 to 30, four options are given. One of them is the correct answer. Make your choice (1, 2, 3 or 4). Shade the correct oval (1, 2, 3 or 4) on the Optical Answer Sheet.

1. Which one of the following is a living thing?

- (1) wallet
- (2) butterfly
- (3) plastic bottle
- (4) glass marble

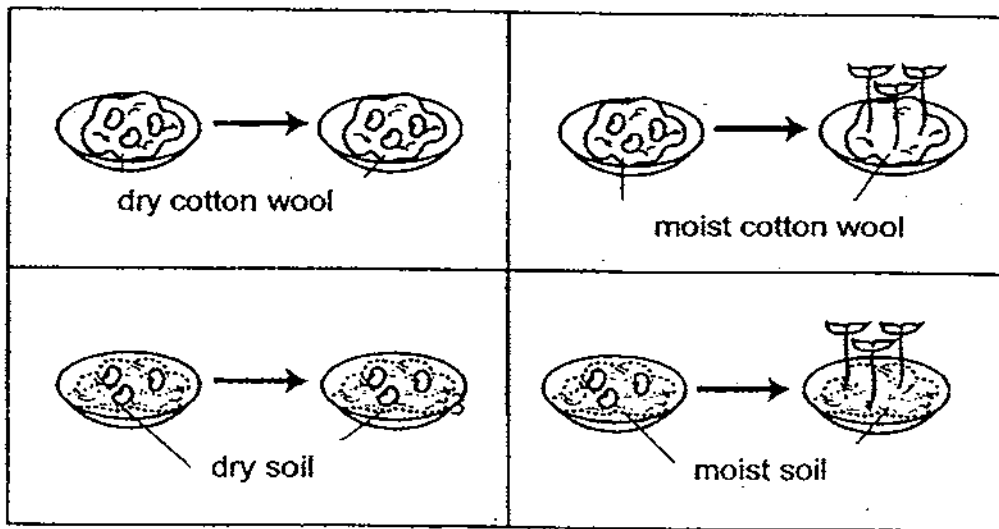
2. The number of crows in a town has increased. Which one of the following best explains this increase?

- (1) Living things grow old and die.
- (2) Living things need water and food.
- (3) Living things reproduce their own kind.
- (4) Living things respond to changes around them.

3. Which one of the following statement is wrong?

- (1) Some bacteria make us fall sick.
- (2) Some bacteria can live inside our body.
- (3) Micro-organisms can be seen with our naked eyes.
- (4) We need a microscope to see micro-organisms.

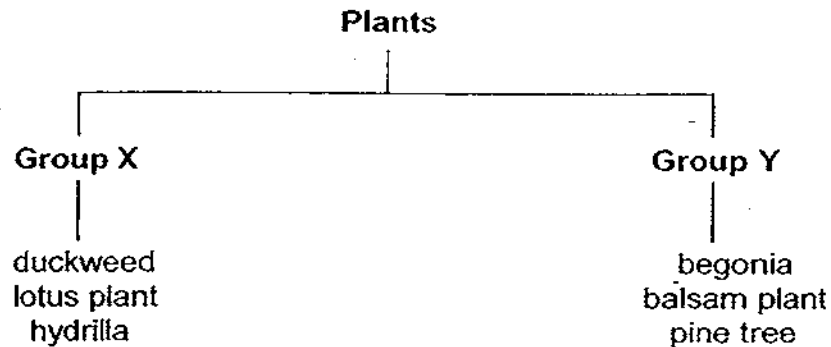
4. Samuel carried out an experiment with some green beans under different conditions. The diagrams below illustrate his observations after four days.



What does this experiment show?

- (1) The beans are non-living things.
- (2) The beans need water to grow.
- (3) The beans can only grow in soil.
- (4) The beans can grow without water.

5. Study the classification diagram below. How are the plants grouped?

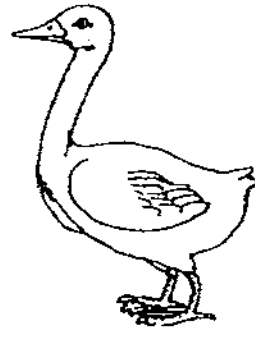


	Group X	Group Y
(1)	Water plants	Land plants
(2)	Green plants	Non-green plants
(3)	Flowering plants	Non-flowering plants
(4)	Poisonous plants	Non-poisonous plants

6. Compare the following animals. How are they similar?



duck-billed platypus



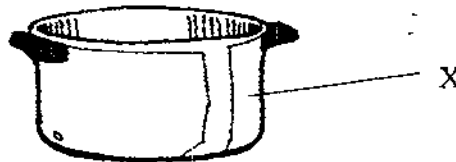
duck

- (1) Both lay eggs.
- (2) Both have wings.
- (3) Both have four legs.
- (4) Both are covered with fur.

7. Which of the following animals shown in the table below has the outer covering matched correctly ?

	Animal	Body Covering
(1)	molly	fur
(2)	horse	hair
(3)	moth	feathers
(4)	ostrich	scales

8. The diagram below shows a cooking pot.



Metal is chosen to make the part of the pot labelled X because it _____.

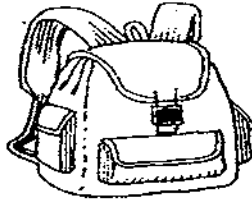
- A: It is shiny.
- B: It is strong.
- C: It is flexible.
- D: It conducts heat.

- (1) A only
- (2) A and B only
- (3) B and D only
- (4) C and D only

9. Mrs Thomson needs to go to the wet market to buy fresh fish and meat. Which of the bags shown below is **most suitable** for carrying the food she intends to buy?



Paper Bag



Cotton Bag



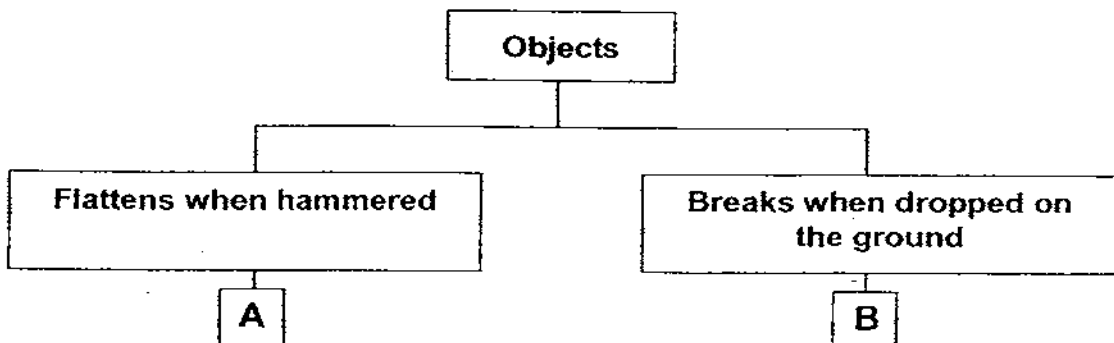
Plastic Bag



Leather Handbag

- (1) paper bag
- (2) cotton bag
- (3) plastic bag
- (4) leather handbag

10. Study the classification table below.



Which two objects given below best represent A and B?

	A	B
(1)	metal spoon	clay pot
(2)	wine glass	nail
(3)	clay pot	iron bar
(4)	porcelain bowl	metal spoon

11. The mug and bucket is made from plastic. Which of the following properties of plastic is important for making these objects?



mug



bucket

- A: It is strong.
- B: It is flexible.
- C: It is waterproof.
- D: It is transparent.

- (1) A only
- (2) B only
- (3) A and C only
- (4) C and D only

12. The table below shows the characteristics of four animals, A, B, C and D.

Animal	Number of legs				Wings	Feelers
	0	2	4	6		
A	√					
B		√			√	
C			√			
D				√	√	√

Which animal shows the characteristics of a bird ?

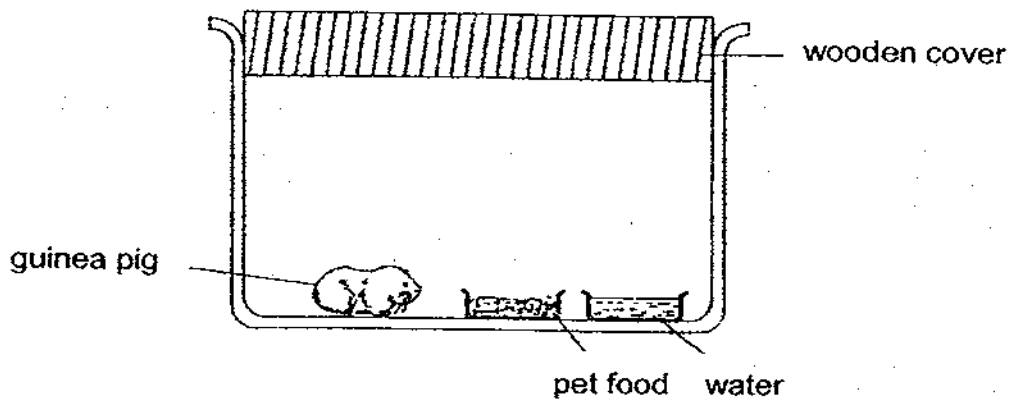
- (1) A
- (2) B
- (3) C
- (4) D

13. Which of the following materials come from plants?

- A: Cotton
- B: Wool
- C: Silk
- D: Nylon

- (1) A only
- (2) B and C only
- (3) A, B and C only
- (4) A, B, C and D

14. The diagram below shows a guinea pig in a sealed container.



The guinea pig is found dead after 1 day. Which of the following is most likely to have caused the guinea pig to die?

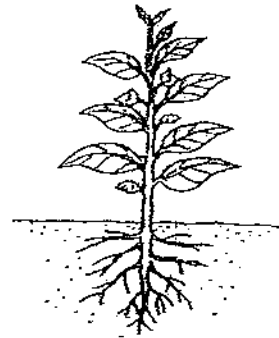
- (1) There is not enough air in the container.
 - (2) There is not enough food in the container.
 - (3) There is not enough water in the container.
 - (4) There is not enough space for the guinea pig to move about.
15. What are the common characteristics of the living things shown below?



mushroom



mimosa

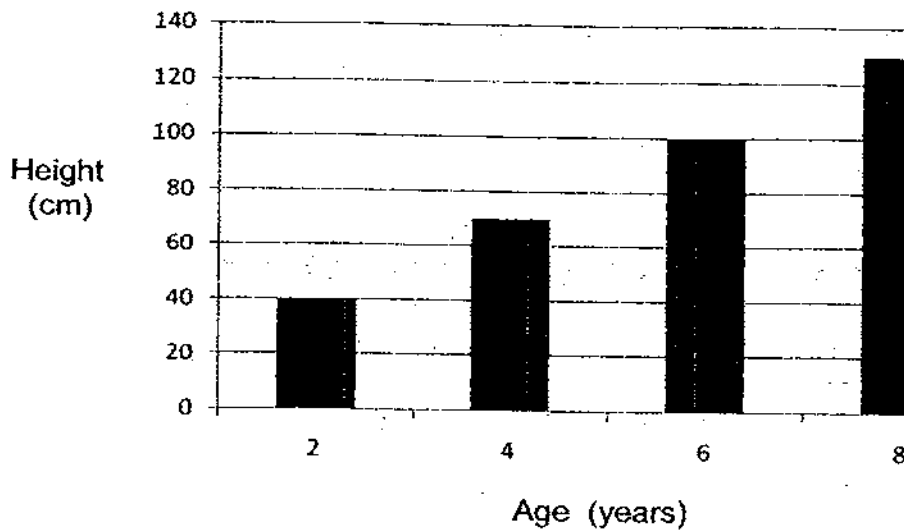


balsam plant

- A: They produce spores for reproduction.
B: They respond to changes around them.
C: They make their own food during the day.
D: They cannot move freely from place to place.

- (1) A and B only
- (2) B and D only
- (3) B and C only
- (4) A,C and D only

16. The graph below shows information about a girl growing up.



What can you infer from the graph?

- (1) The girl has become taller as she grows older
- (2) The girl has become heavier as she grows older.
- (3) The girl has become thinner as she grows older.
- (4) The girl has become stronger as she grows older.

17. Why do animals move from place to place?

- A: To look for food
- B: To look for water
- C: To look for shelter
- D: To escape from danger

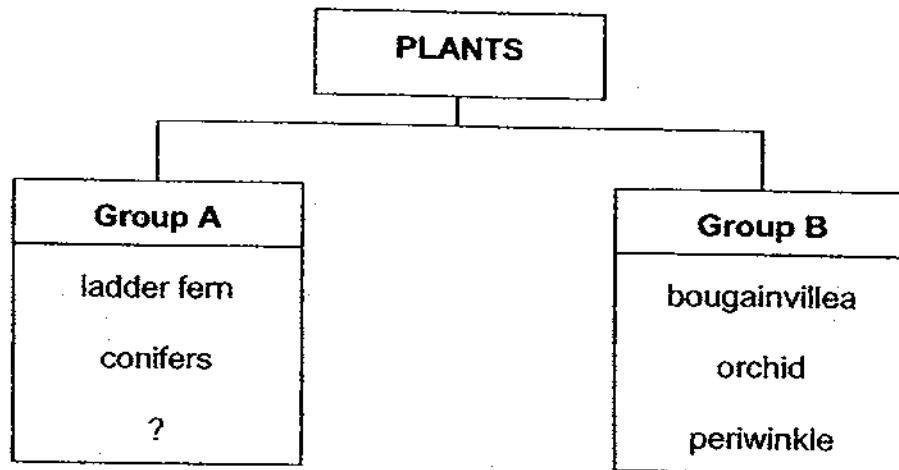
- (1) D only
- (2) A and B only
- (3) B, C and D only
- (4) A, B, C and D

18. Which of the following statements about fungi are true?

- A: They need water to grow.
- B: They do not have leaves.
- C: They make their own food.
- D: They reproduce from spores.

- (1) A and B only
- (2) B and C only
- (3) C and D only
- (4) A, B and D only

19. Study the classification chart below.



Which one of the following can be placed in **Group A**?

- | | |
|-----------|-----------|
| (1) Rose | (2) Moss |
| (3) Daisy | (4) Ixora |

20. Study the two plants shown below. How are they similar ?



Bird's Nest Fern



Hibiscus

- A: They have leaves.
- B: They have flowers.
- C: They reproduce from spores.
- D: They can make their own food.

- | | |
|------------------|------------------|
| (1) A only | (2) B only |
| (3) C and D only | (4) A and D only |

21. Which of the following statements about birds are true?

- A: Birds feed on seeds only.
- B: Birds have only two legs.
- C: Birds are the only animals that have wings to fly.
- D: Birds are the only animals with an outer covering of feathers.

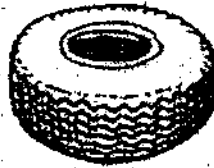
- | | |
|------------------|---------------------|
| (1) A only | (2) A and C only |
| (3) B and D only | (4) B, C and D only |

24. Which of the following objects are made from the same material?



envelope

A



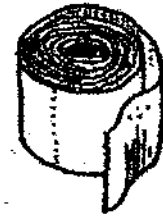
tyre

B



brick

C

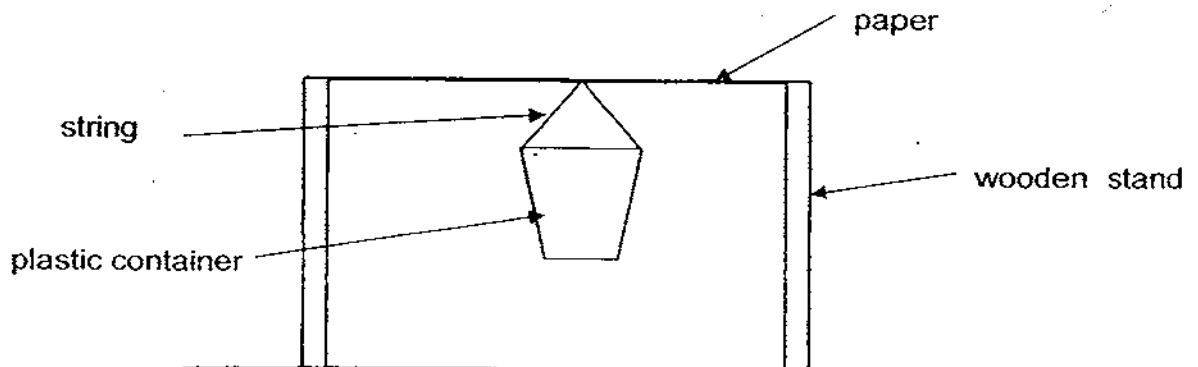


toilet roll

D

- (1) A and B only
- (2) A and D only
- (3) B and C only
- (4) C and D only

25. Nicolas set up an experiment as shown below to find out the strength of different types of paper.



The number of buttons the plastic container could hold before the paper tore was recorded in the table below.

Type of paper	Number of buttons
Tissue paper	1
Art paper	11
Newspaper	4
Waxed paper	7

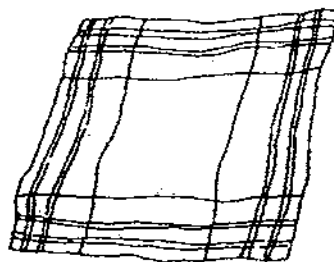
Based on the above results, which type of paper is the strongest?

- (1) Tissue paper
- (2) Art paper
- (3) Newspaper
- (4) Waxed paper

26. The things shown below are made of cotton.



Shirt



Handkerchief

Why is cotton suitable for making the shirt and the handkerchief?

- A: Cotton is waterproof.
- B: Cotton is a soft material.
- C: Cotton absorbs water easily.

- (1) A only
- (2) B and C only
- (3) B only
- (4) A, B and C

27. The table below shows the characteristics of three objects A, B and C.

	A	B	C
Bends easily	√	√	√
Gets stretched easily	√	√	x
Absorbs water	x	√	√

Which one of the following sets of objects best fits the description in the table above?

	A	B	C
(1)	Swim suit x	Paper	Rubber band
(2)	Paper x	Swim suit	Rubber band
(3)	Rubber band ✓	Sponge ✓	Paper
(4)	Paper x	Rubber band	Swim suit

28. Rubber can be used to make _____ as it is flexible.

- A: gloves
- B: doors
- C: hoses
- D: slippers

- (1) A only
- (2) B only
- (3) B and C only.
- (4) A, C and D

29. Four children were discussing the use of materials. Whose idea reflects the **correct** use of the material that was chosen ?

Alice said, "I will use metal to make a raft."

Larry said, "I will use glass to make a float."

Joyce said, "I will use ceramic to make a mug."

Sammy said, "I will use plastic to make a cooking pot."

- (1) Alice
- (2) Larry
- (3) Joyce
- (4) Sammy

30. The table below shows the properties of four objects.

Properties Objects	Floats on water	Break easily	Transparent
Iron nail	√	√	×
Ceramic bowl	×	×	×
Styrofoam plate	√	√	×
Steel spoon	√	√	×

The properties of the _____ shown above are correct.

- (1) iron nail
- (2) steel spoon
- (3) ceramic bowl
- (4) styrofoam plate



**NAN HUA PRIMARY SCHOOL
SEMESTRAL ASSESSMENT 1 – 2009
PRIMARY 3**

Science

BOOKLET B

14 Open-ended questions (40 marks)

Total Time for Booklets A and B : 1 hours 45 minutes

INSTRUCTIONS TO CANDIDATES

1. Write your name and index number in the space provided.
2. Do not turn over the page until you are told to do so.
3. Follow all instructions carefully.
4. Answer all questions.
5. Write your answers in this booklet.

Marks Obtained

Section B

	/40
--	-----

Name: _____ () **Class: P 3** _____

Date : 14 May 2009

Parent's Signature: _____

Section B (40 marks)

Write your answers to questions 31 to 44. The marks available is shown in brackets [] at the end of each question or part question.

31. A mimosa plant is shown in the diagram below.



(a) What will happen if you touch the leaves of the mimosa plant?

[1]

(b) ^{What} ~~Why~~ characteristic of living things does your answer in (a) show?

[1]

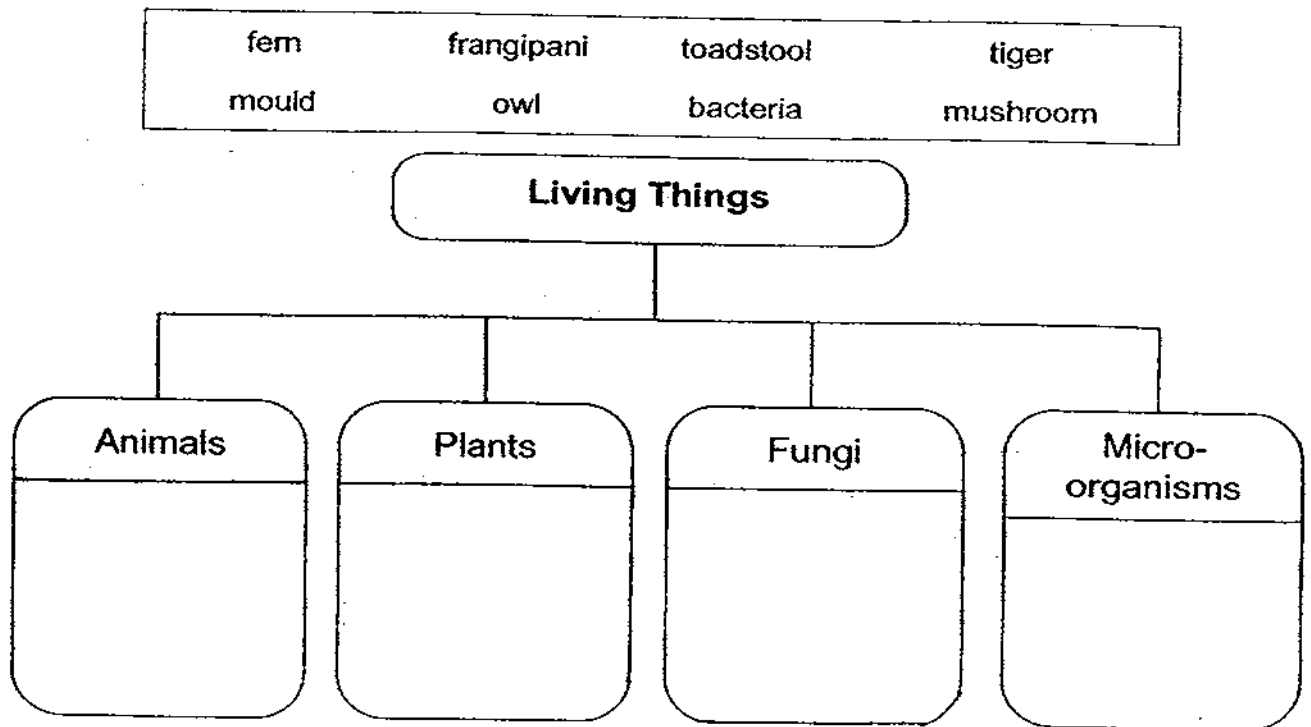
32. Classify the things given below under the correct heading.

[3]

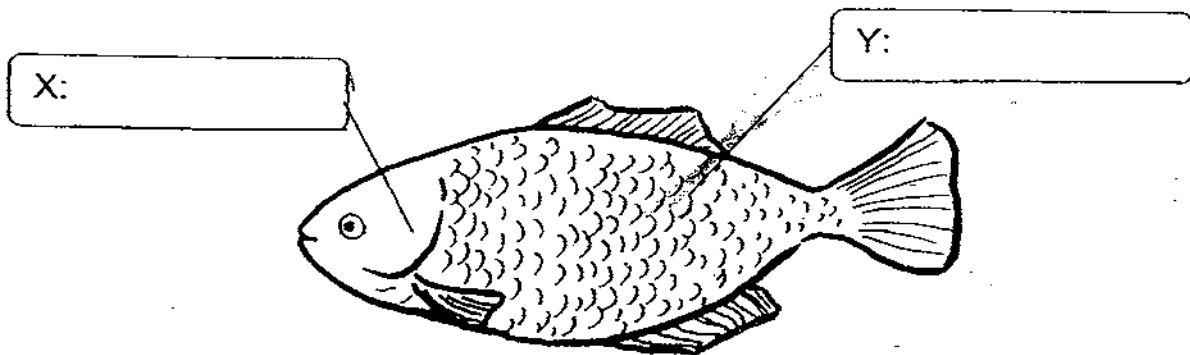
grass	book	computer	monkey	watch	centipede
-------	------	----------	--------	-------	-----------

Living Things	Non-living Things

33. (a) Group the living things given in the box correctly in the classification chart below. [4]



34. (a) Write the name of the parts of the fish labelled X and Y in the diagram below [1]



(b) Name the part that is beneath X. State its function. [2]

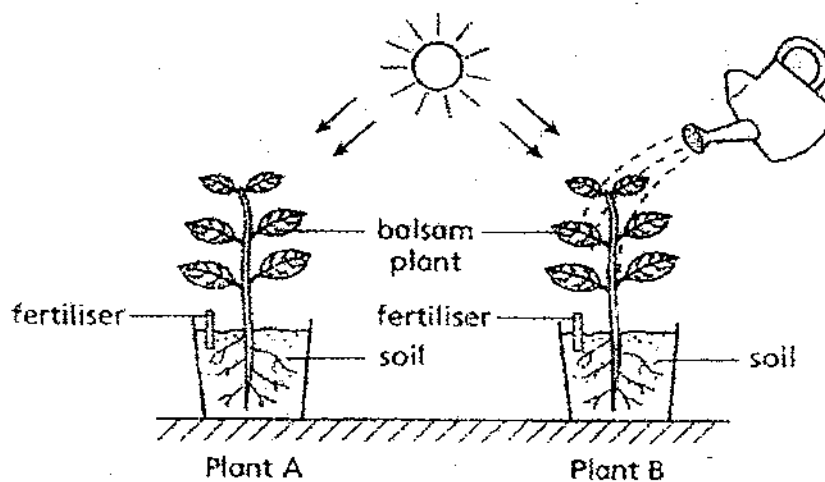
(c) State the function of Y. [1]

35. Classify the materials listed below under the correct headings. [4]

cork	leather	olive oil	silk
clay	pearl	rocks	linen

Materials from Plants	Materials from Animals	Materials from the Ground

36. Study the diagram below. John carried out an experiment using two pots of balsam plants labelled Plant A and Plant B. They are both given fertilisers. Plant B is watered everyday but not Plant A.






(a) What is the aim of the experiment? [1]

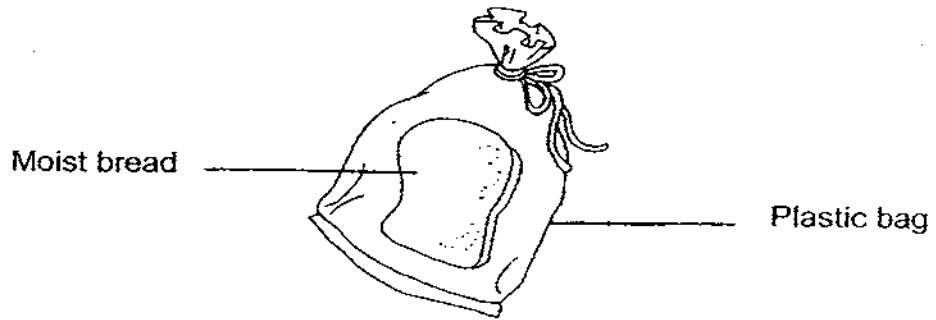
(b) John carried out another experiment to find out if the type of soil affects the growth of the balsam plant. Put a tick (✓) against the condition(s) that has/have to be kept the same in order to carry out a fair test. [2]

Conditions	
Amount of soil	
Type of soil	
Amount of fertiliser	
Amount of water	

37. Study the diagram given below. Write the names of the young in the boxes provided. [3]

Animal			
Adult	hen	butterfly	frog
Young			

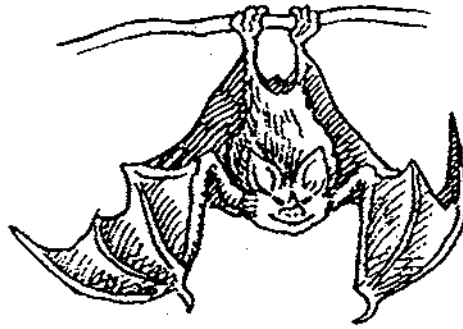
38. Mary added a few drops of water to a piece of bread. She then put the bread in a plastic bag as shown below. After a few days, some black patches are seen on the bread.



(a) What organism has grown on the bread? [1]

(b) Name one condition that is needed for the growth of the organism that you mentioned in (a). [1]

39. A bat can fly like a bird but it is actually a mammal, not a bird.



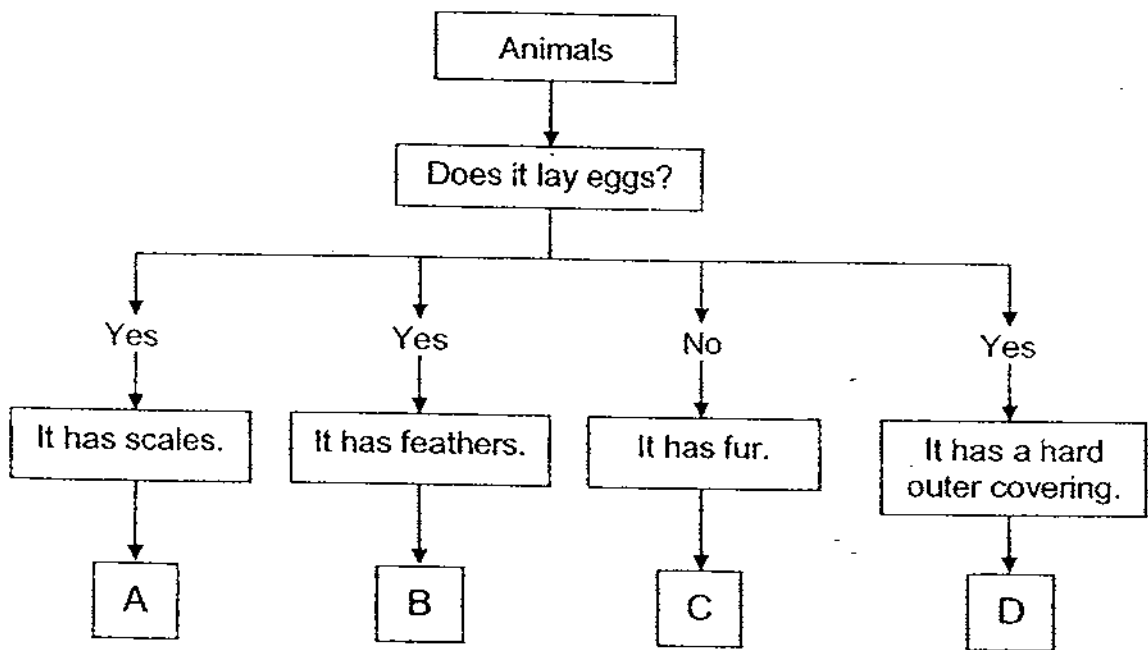
Give two reasons why a bat is a mammal.

[2]

Reason 1 : _____

Reason 2 : _____

40. Study the flow chart below.



Identify the letters in the flow chart that represent each of the following animals below and put these letters into each of the boxes.

[2]

(a) Pigeon:

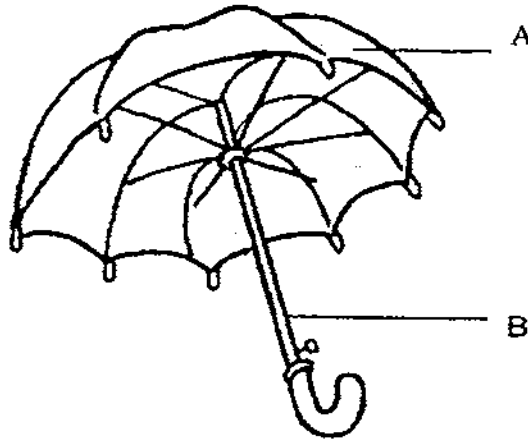
(b) Beetle:

(c) Salmon:

(d) Panda:

Score	4
-------	---

41. The diagram below shows an umbrella.



(a) John used an umbrella on a rainy day. He exclaimed, "I'm not wet!"
 What property of the material used to make part A of the umbrella helps to keep him dry? [1]

(b) The part labelled 'B' needs to be strong and lasting.
 What material can be used to make this part? [1]

42. The table below shows 4 objects and the properties of the materials used to make them.

Object	Bag	Toothpick	Towel	Car screen ^{Wind screen}
Flexible	Yes	No	Yes	No
Absorbs water	No	Yes	Yes	No
Can see through	Yes	No	No	Yes
Light	No	Yes	Yes	No

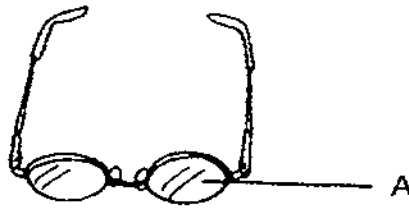
State the material that can be used to make the following objects based on the properties stated in the table above. [4]

(a) Bag : _____ (b) Toothpick : _____

(c) Towel : _____ (d) Car windscreen : _____

Score	6
-------	---

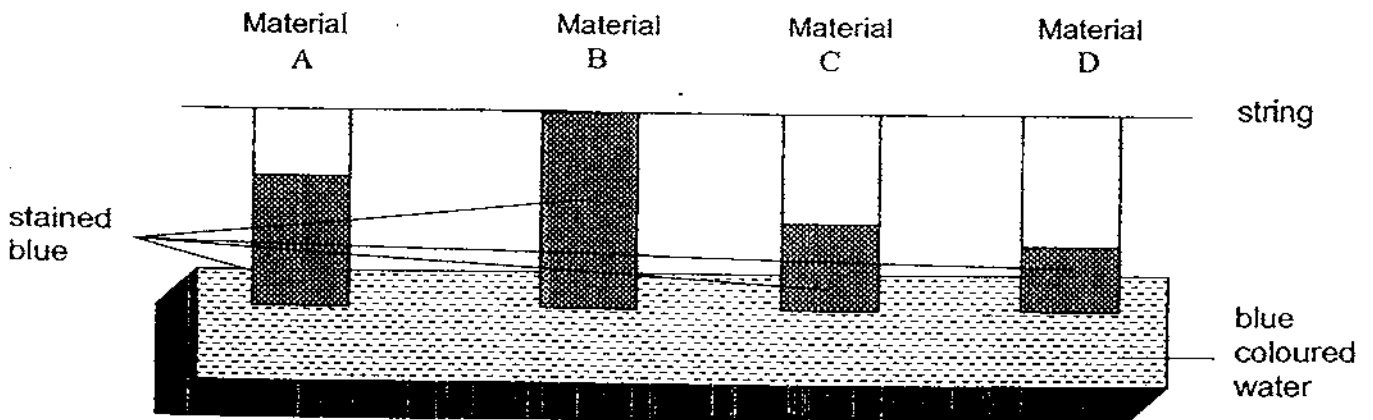
43. Part A of the pair of spectacles shown below is made of glass.



(a) Name another material that is suitable for making part A. [1]

(b) What characteristic of the material in your answer in (a) makes it a suitable choice? [1]

44. Julian carried out an experiment as shown in the diagram below. Four different materials, A, B, C and D, were hung on a string and dipped into a container of blue coloured water as shown in the diagram below.



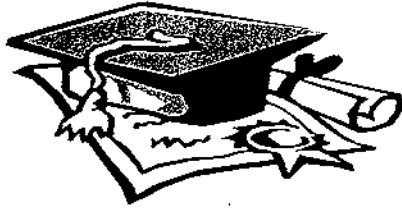
(a) What do you think Julian was trying to find out from his experiment? [1]

(b) Which material (A, B, C or D) is the **most suitable** for wiping his perspiration? Give a reason for your choice. [2]

End of Paper

Score	5
-------	---





ANSWER SHEET

EXAM PAPER 2009

SCHOOL : NAN HUA PRIMARY SCHOOL

SUBJECT : PRIMARY 3 SCIENCE

TERM : SA 1

Q1	Q2	Q3	Q4	Q5	Q6	Q7	Q8	Q9	Q10	Q11	Q12	Q13	Q14	Q15	Q16	Q17
2	3	3	2	1	1	2	3	3	1	3	2	1	1	2	1	4

Q18	Q19	Q20	Q21	Q22	Q23	Q24	Q25	Q26	Q27	Q28	Q29	Q30
4	2	4	3	3	1	2	2	2	3	4	3	4

31)a)The leaves will fold up.

b)All living things respond to changes.

32)Living Things : grass, monkey, centipede

Non-living Things : computer, book, watch

33)Animals: owl, tiger

Plants : fem, frangipani

Fungi : mushroom, toadstool, mould

Micro-organisms : bacteria

34)a)X: gill cover Y: scales

b)It is the gills. It helps the fish to breathe in water.

c)It protects the fish.

35)Olive oil leather rocks

Linen silk clay

Cork pearl

36)a)To see whether plant A need water.

b)Amount of soil.

Amount of fertiliser

Amount of water

37)chick caterpillar tad pole

38)a)bread mould.

b)It needs water to grow.

39)1)It give birth to young.

2)It feeds its young with milk.

40)a)B b)D c)A d)C

41)a)It is waterproof.

b)metal.

42)a)rubber b)wood c)fabic d)glass

43)a)plastic.

b)It is transparent.

44)a)Which is most absorbent.

b)Material B. It can absorb the most water.

