



南洋小學  
NANYANG PRIMARY SCHOOL

PRIMARY THREE SCIENCE  
SEMESTRAL ASSESSMENT 1

2009

**BOOKLET A**

Date : 8 May 2009

Duration : 1 h 45 min

Name : \_\_\_\_\_ ( )

Class: Primary 3 ( )

Marks Scored:

Booklet A:		60
Booklet B :		40
Total :		100

Parent's signature: .....

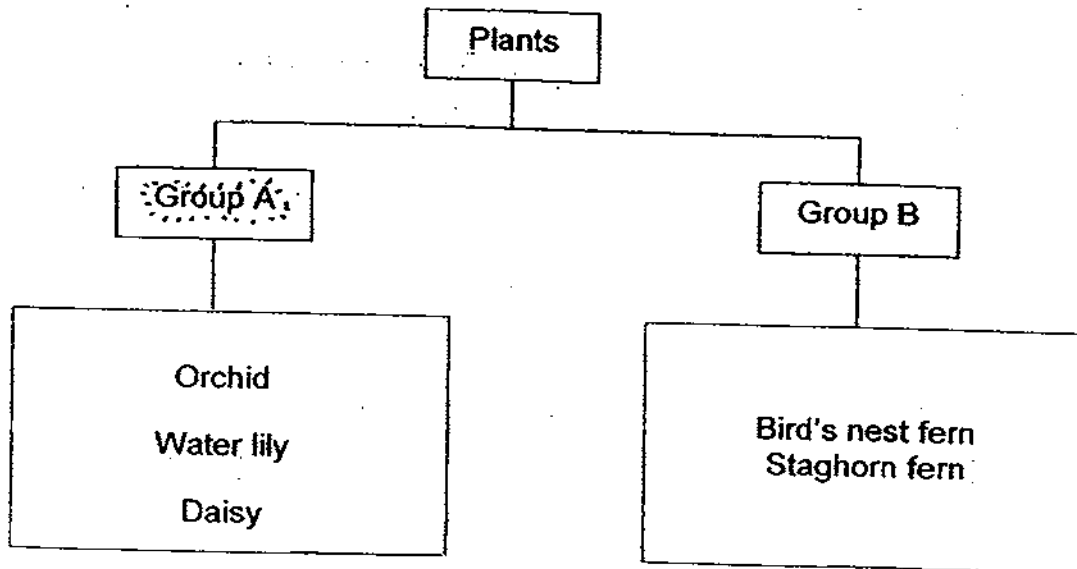
DO NOT OPEN THIS BOOKLET UNTIL YOU ARE TOLD TO DO SO.  
FOLLOW ALL INSTRUCTIONS CAREFULLY.

Booklet A consists of 14 printed pages.

**Section A (30 x 2 marks = 60 marks)**

For each question from 1 to 30, four options are given. One of them is the correct answer. Make your choice (1, 2, 3 or 4). Shade the correct oval (1, 2, 3 or 4) on the Optical Answer Sheet provided.

1. Study the classification chart below.



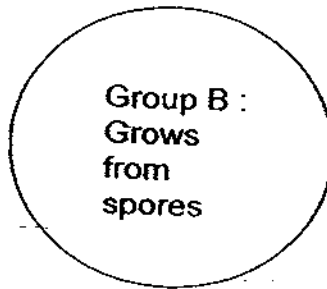
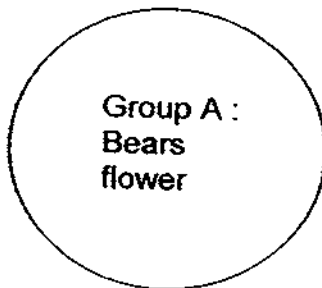
Which one of the following can be placed in Group B?

- (1) Lantana
- (2) Hibiscus
- (3) Rain tree
- (4) Dragon's scales.

2. A group of children was walking in the rain forest. One of them did a sketch of the picture shown below.



In which of the following groups can the above organism be placed in?



- (1) Groups A and B only  
(2) Groups A and C only  
(3) Groups B and C only  
(4) Groups A, B and C
3. Which one of the following statements is true?
- (1) Fungi are not plants.  
(2) Fungi make their own food.  
(3) Mushrooms are a type of bacteria.  
(4) Mould belongs to a group of non-living things.

4. Which of the following organisms are grouped correctly?

	Water Plants	Non-flowering plants	Fungi	Micro-organisms
(1)	Duckweed	Mosses	Toadstool	Bacteria
(2)	Duckweed	Toadstool	Mosses	Bacteria
(3)	Duckweed	Toadstool	Bacteria	Mosses
(4)	Mosses	Duckweed	Bacteria	Toadstool

5. The following statements describe a living thing.

It reproduces from spores.  
 It grows in many different places.  
 It does not bear flowers.  
 It does not contain chlorophyll.

Which one of the following best represents the living thing?

- (1) Mimosa
- (2) Dumbcane
- (3) Ladder fern
- (4) Bracket fungus

6. Which one of the animals shown below is not an insect?



(1)



(2)

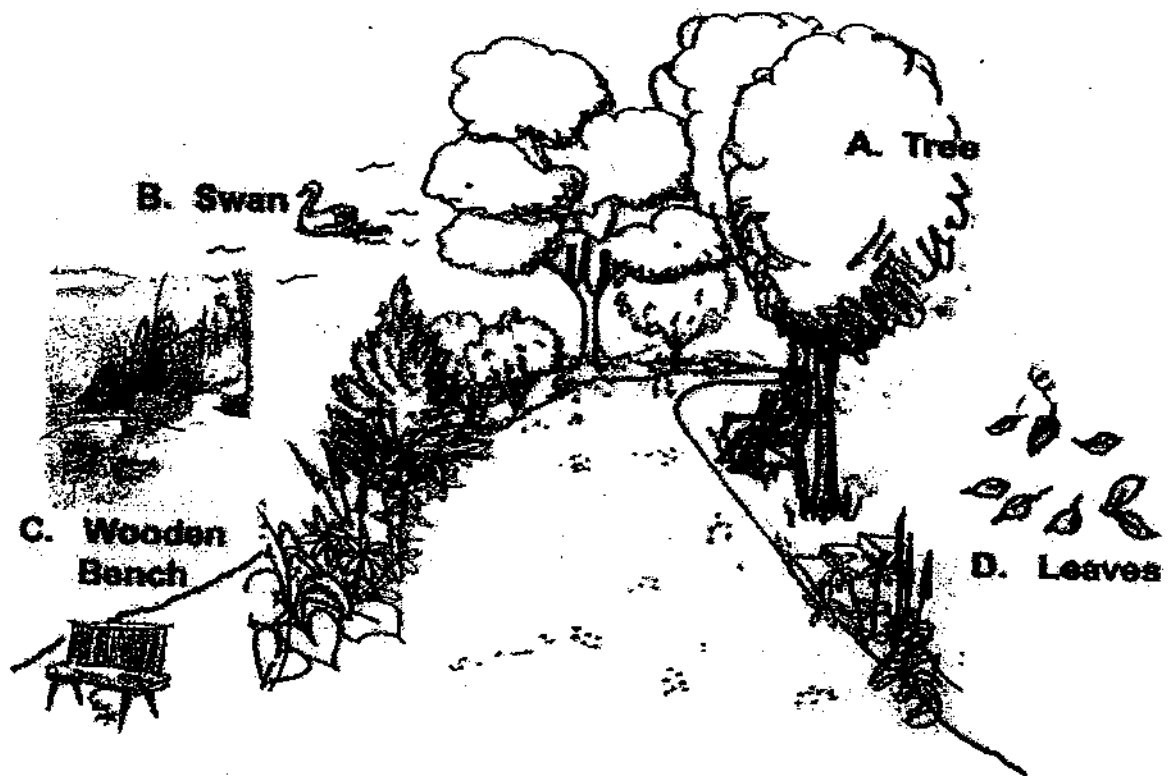


(3)



(4)

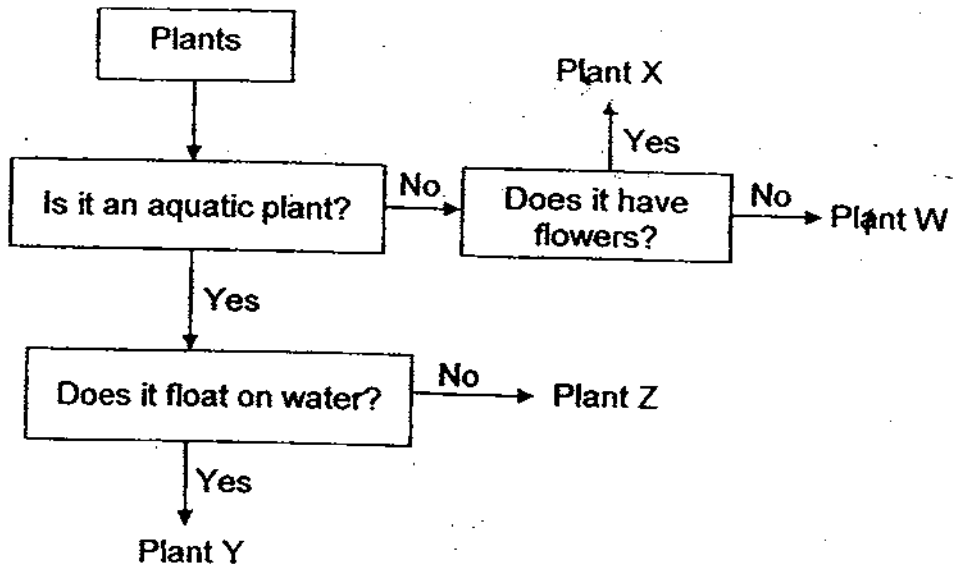
7. Which of the following things in the garden are once alive?



(1) A and B only  
(3) A, B and C only

(2) C and D only  
(4) A, B, C and D

8. Study the flow chart below carefully.



Which of the following are examples of Plant W and Plant X?

	Plant W	Plant X
(1)	Frangipani	Ixora
(2)	Duckweed	Moss
(3)	Ladder fern	Rose
(4)	Grass	Pitcher plant

9. Study the plants as shown below.



Ladder fern



Bird's nest fern

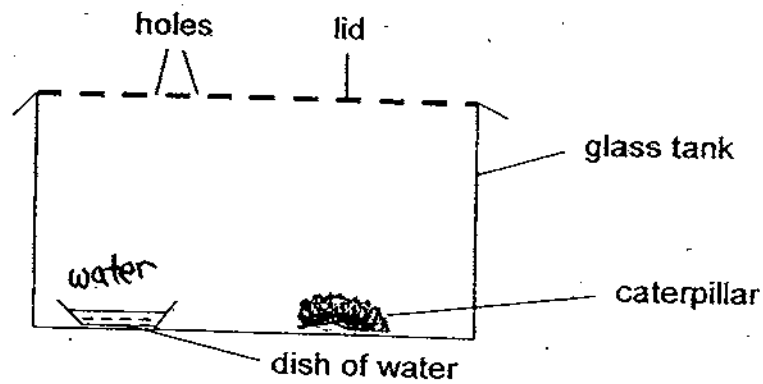


Mosses

Which one of the following characteristics is shared by the plants shown above?

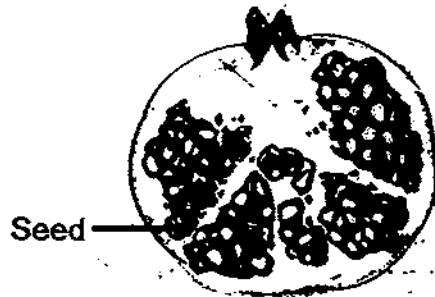
- (1) They are harmful plants.
- (2) They reproduce by spores.
- (3) They are found on land and in water.
- (4) They feed on other plants and animals.

10. John carried out an experiment as shown below. After a few weeks, the caterpillar died. What does this experiment show?



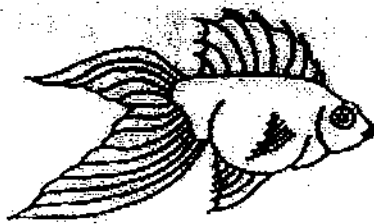
- (1) The caterpillar needs air to survive.
- (2) The caterpillar needs food to survive.
- (3) The caterpillar needs space to survive.
- (4) The caterpillar needs sunlight to survive.

11. Study the cross-section of a fruit as shown below.



How are the seeds useful to the plant?

- (1) They beautify the plant.
  - (2) They help the plant to grow.
  - (3) They give nutrients to the plant.
  - (4) They help the plant to reproduce.
12. The diagram below shows two animals.



goldfish



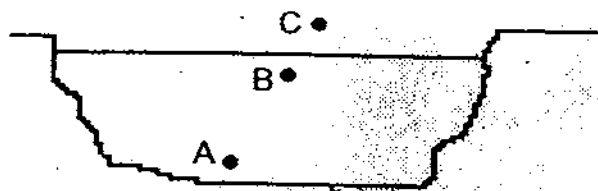
whale

Which one of the following characteristics is shared by the animals shown above?

- (1) They lay eggs.
  - (2) They breathe through gills.
  - (3) Their tails help them to swim.
  - (4) Their bodies are covered with scales.
13. Jane planted a balsam in a pot of garden soil. She placed the potted plant in her bedroom away from the window. The plant was watered daily. Two weeks later, the leaves turned pale and the plant died. What could have happened?
- (1) She did not give the plant nutrients.
  - (2) The plant did not have enough water.
  - (3) There was not enough air for the plant.
  - (4) There was not enough sunlight for the plant to make food.



14. Study the cross-section of a pond below.



If water hyacinth, water lily and hydrilla are growing healthily in the pond above, at which point(s) A, B or C could parts of the plants be seen?

	Water hyacinth	Water lily	Hydrilla
<del>(X)</del>	A only	A and B only	B only
<del>(X)</del>	B only	C only	A and B only
<del>(3)</del>	B and C only	A, B and C	A only
<del>(X)</del>	A and B only	B only	A, B and C

15. Which of the following statement(s) about plants is / are true?

- A Some water plants bear flowers.
- B All flowering plants bear colourful flowers.
- C Both grass and fern are non-flowering plants.
- D Only some land and water plants can make food.

- ~~(1)~~ A only
- ~~(3)~~ B and C only

- ~~(2)~~ A and C only
- ~~(4)~~ B and D only

16. The table below provides some information about three plants, X, Y and Z. A tick (✓) shows that the plant has the characteristic.

Characteristics	X	Y	Z
Bears edible fruits	✓		
Bears flowers	✓	✓	

Which one of the following best represents plants X, Y and Z?

	X	Y	Z
(1)	Mimosa	Pong pong tree	Mushroom
(2)	Mango tree	Hibiscus	Moss
(3)	Bird's nest fern	Orchid	Pine tree
(4)	Coconut tree	Cherry tree	Bread mould

17. Julie classified some plants in four different ways using four different classification tables as shown below. Which one of the classification tables would not have suitable headings?

(1)

P	Q
Conifers	Sunflower
Staghorn fern	Palm tree

(2)

R	S
Apple tree	Sunflower
Durian tree	Hibiscus

(3)

T	U
Lantana	Rose
Ixora	Hibiscus

(4)

V	W
Dragon scale fern	Staghorn fern
Hydrilla	Water lily

18. Which of the following statement(s) below correctly describe(s) the differences between ladder fern and papaya tree?

- A Both ladder fern and papaya tree have leaves.
- B Ladder fern does not have roots while papaya tree has roots.
- C Ladder fern reproduces by spores while papaya tree reproduces by seeds.

- ~~(1)~~ A only
- ~~(3)~~ A and B only

- ~~(2)~~ C only
- ~~(4)~~ A, B and C

19. Which one of the following statements about fish is **false**?

- ~~(1)~~ Most fish have scales.
- ~~(2)~~ All fish have fins and a tail.
- ~~(3)~~ All fish are cold-blooded animals.
- ~~(4)~~ Some female fish produce milk for their young.

The table below shows the characteristics of four animals P, Q, R and S. Use the information to answer questions 20, 21 and 22.

Animal	Number of legs				Wings
	0	2	4	6	
P	√				
Q		√			√
R			√		
S				√	

20. Which animals could be mammals?

- ~~(1)~~ P and S only
- ~~(3)~~ P, Q and R only

- ~~(2)~~ Q and R only
- ~~(4)~~ Q, R and S only

21. Which one of the following animals has the same reproduction method as animal S?

- (1) Cat  
 (2) Guppy  
 (3) Horse  
 (4) Spiny anteater

22. If animals P and Q have the same type of movement, which one of the following pairs of animals best represents animals P and Q?

	P	Q
(4)	Earthworm	Duck
(2)	Molly	Penguin
(3)	Caterpillar	Eagle
(4)	Snail	Ostrich

23. Which of the following characteristics do all insects have?

- A Wings  
 B Six legs  
 C A pair of feelers  
 D Three body parts

- (1) A and B only  
 (2) C and D only  
 (3) A, B and C only  
 (4) B, C and D only

24. Which of the following groups of animals have backbones?

- A Fish  
 B Birds  
 C Insects  
 D Mammals

- (1) D only  
 (2) A and C only  
 (3) A, B and D only  
 (4) A, B, C and D

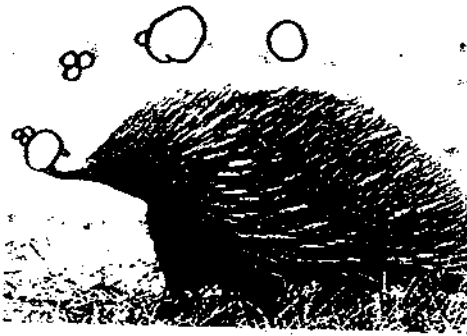
25. Study the classification table below. The animals are classified into three groups F, G and H.

F	G	H
Chicken	Grasshopper	Spider
Penguin	Butterfly	Scorpion
Bat	Cockroach	Tick

The animals are grouped according to \_\_\_\_\_.

- (1) their habitats  
(2) their animal groups  
(3) the way they move  
(4) the number of legs they have
26. Which of the following animals can breathe through their skin?
- A Bat  
B Frog  
C Whale  
D Earthworm
- (1) A and C only  
(2) B and C only  
(3) B and D only  
(4) A, B and D only

27. Study the pictures below.



spiny anteater



dolphin

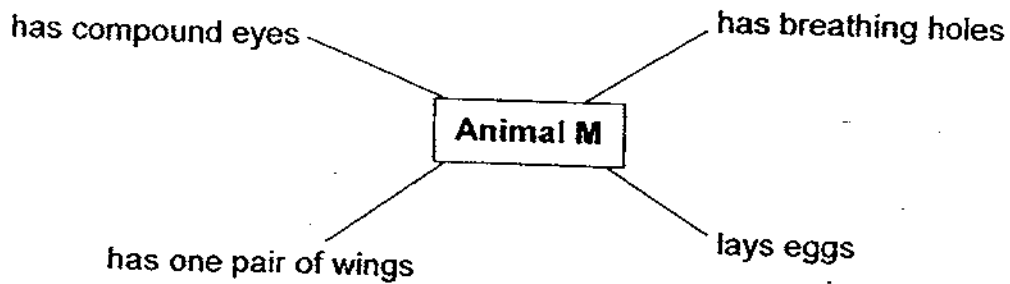
The two animals differ in their \_\_\_\_\_.

- A habitat
- B body shape
- C outer covering
- D method of reproduction

- (1) A and B only
- (3) A, B and D only

- (2) C and D only
- (4) A, B, C and D

28. Study the concept map below.

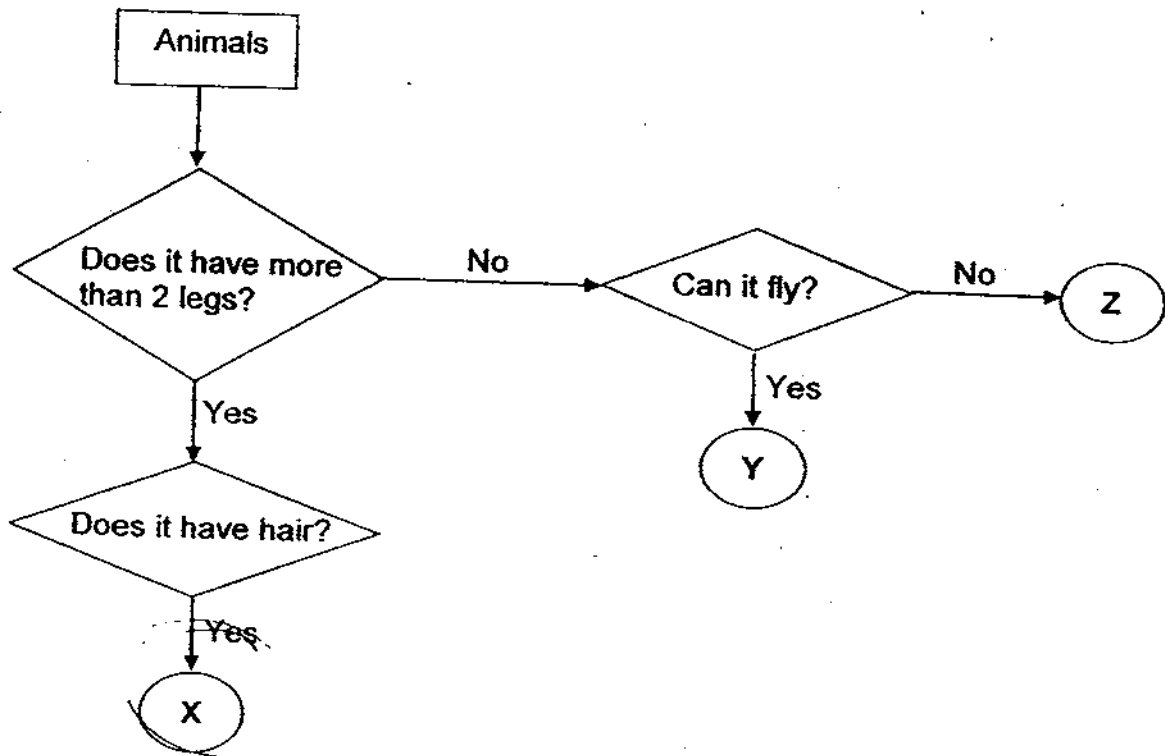


Which one of the following animals best represents animal M?

- (1) Penguin
- (3) Dragonfly

- (2) Housefly
- (4) Silverfish

The flow chart below gives the information about animals X, Y and Z. Use the information to answer questions 29 and 30.



29. Which one of the following statements about the animals is correct?

- (1) Animal Y has no legs.
- (2) Animal X has four legs.
- (3) Animal Z must be a bird.
- (4) Animals Y and Z are insects.

30. Which of the following animals best represent animal Z?

- A Emu
- B Owl
- C Kiwi
- D Eagle

- (1) A and B only
- (2) A and C only
- (3) B and C only
- (4) C and D only



南洋小学

NANYANG PRIMARY SCHOOL

PRIMARY THREE SCIENCE

SEMESTRAL ASSESSMENT 1

2009

**BOOKLET B**

Date : 8 May 2009

Duration : 1 h 45 min

Name : \_\_\_\_\_ ( )

Class: Primary 3 ( )

Marks Scored:

Booklet A:		60
Booklet B :		40
Total :		100

Parent's signature: \_\_\_\_\_

DO NOT OPEN THIS BOOKLET UNTIL YOU ARE TOLD TO DO SO.  
FOLLOW ALL INSTRUCTIONS CAREFULLY.

Booklet B consists of 10 printed pages.



**Section B (40 marks)**

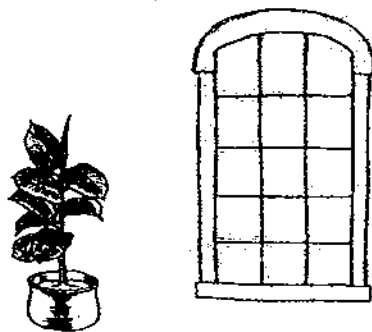
Write your answers to questions 31 to 44 in the spaces provided.  
Marks will be deducted for misspelt key words.

31. Why do living things need to reproduce? [2]

---

---

32. Peter placed a potted plant next to the window. A week later, he observed some changes taking place in the plant.



Draw how the potted plant will look like a week later in the box provided below.

[2]

One week later

A rectangular box containing the text "One week later" at the top left and a drawing of a window with a grid pattern on the right side. The window is identical to the one in the previous image.

33. Study the animals shown in the box below.

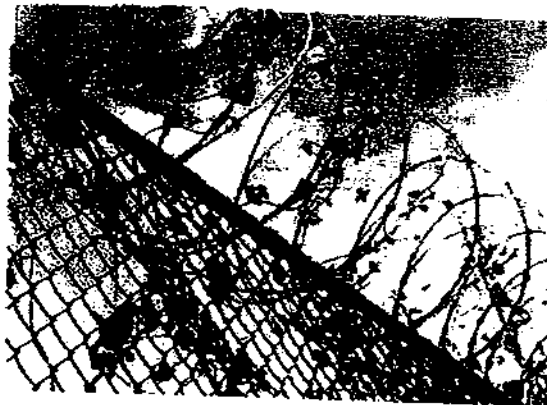
millipede	earthworm	seal
hamster	turtle	cobra

Classify all the animals according to the different parts they use for movement in the table below.

[3]

Flippers	Whole Body	Legs

34. Lucas saw a plant on his way to school as shown below. He walked closer to observe the plant. He noticed that the plant has weak stems and it climbed up the fence for support.



Why does the plant need to climb up the fence?

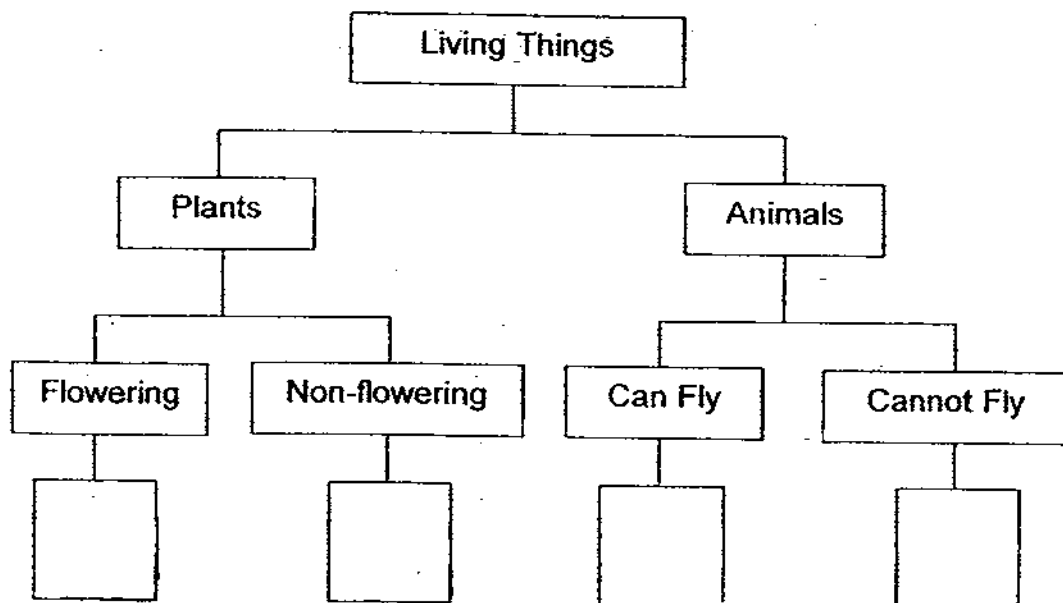
[2]

35. The table below gives information about the organisms C, D, E and F, based on their characteristics. A tick ( ✓ ) shows that the living thing has the characteristics.

Living things Characteristics	C	D	E	F
Organism that bears fruit	✓			
Organism does not bear fruit but makes its own food			✓	
Organism with wings				✓
Organism without wings		✓		

From the above information, fill in the boxes in the classification chart below with letters C, D, E and F. Each letter could only be used once.

[4]



36. Study the diagrams as shown below carefully.



Mould  
on a  
bread



Staghorn  
fern

State two ways in which the two organisms are similar.

[2]

(a)

---

---

(b)

---

---

37. Draw lines to match the following living things on the left to the characteristics that describe them.

[3]

Cattail •

• It has a strong stem.

Morning Glory •

• It is an aquatic plant.

Bird's Nest Fern •

• It has a weak stem.

Rain Tree •

• ~~It~~ is a micro-organism.

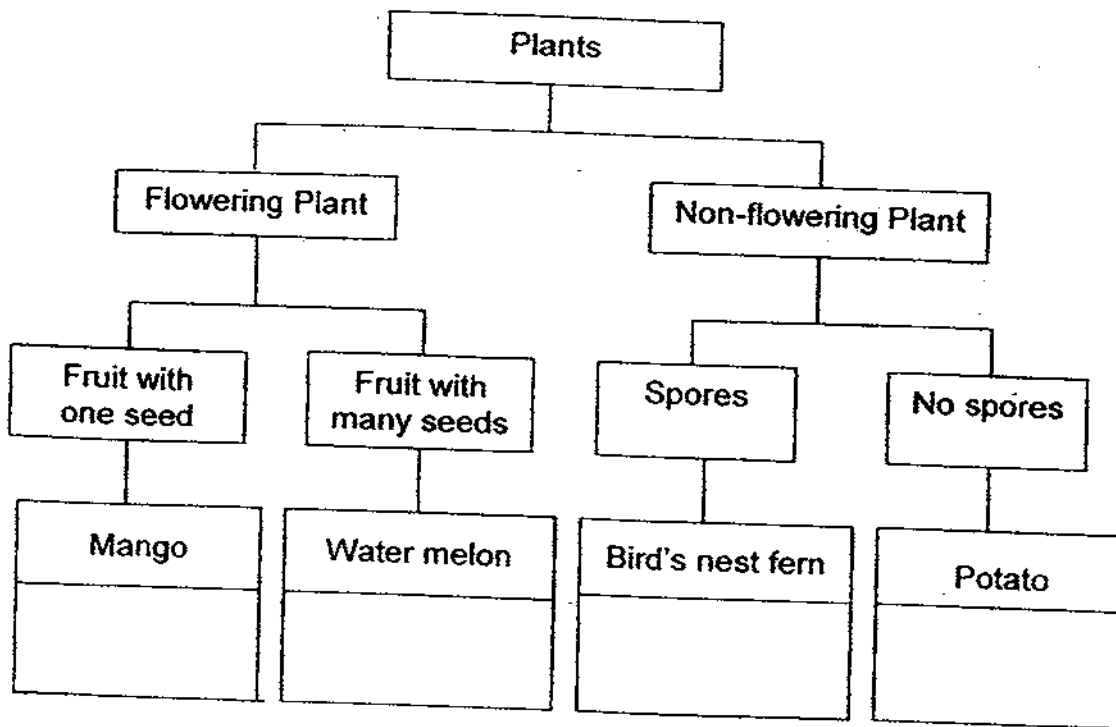
Bacteria •

• ~~It~~ is a non-flowering organism.

Mushroom •

• It is a plant that grows on another plant.

38. Study the classification chart below.



(a) Based on the classification chart above, write down two characteristics of the water melon?

[2]

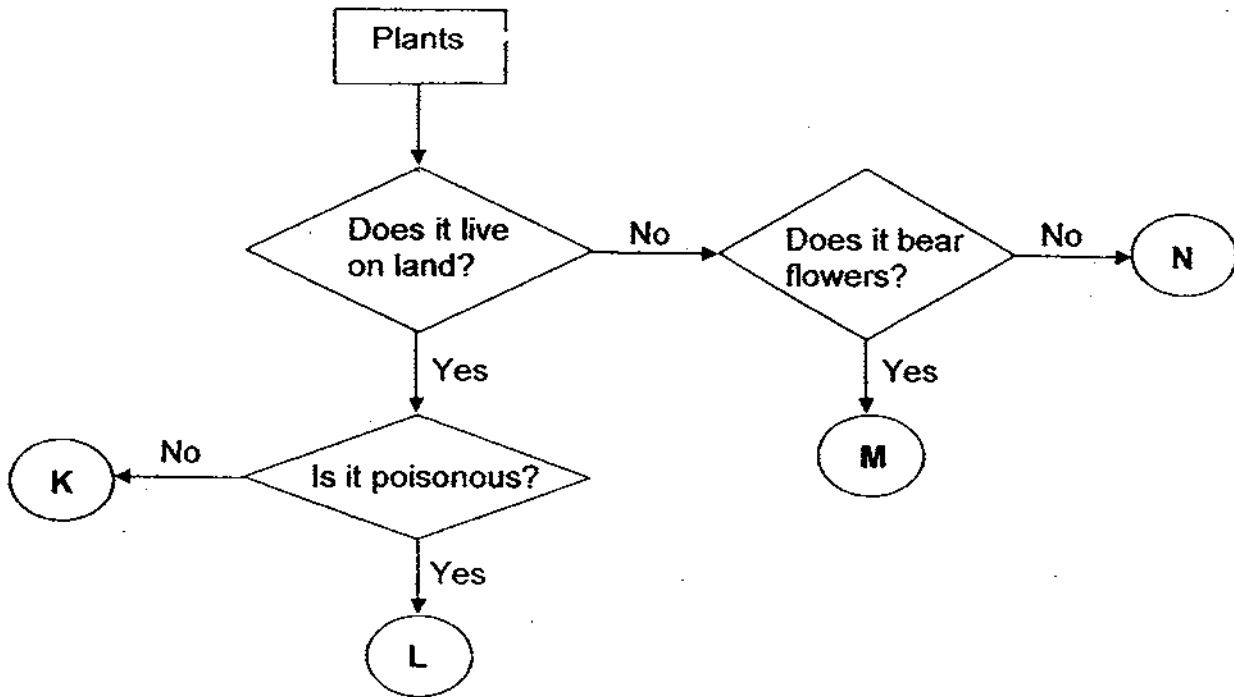
---

---

(b) Put 'Rambutan' and 'Moss' in the correct boxes in the classification chart above.

[2]

39. Study the flow chart below.



Based on the information above, put a tick (✓) in the appropriate boxes to indicate whether the statements are 'True', 'False' or 'Not possible to tell'.

[2] (4)

	Statements	True	False	Not possible to tell
(a)	M and N are not poisonous.			
(b)	Allamanda is an example of L.			
(c)	K is a flowering plant.			
(d)	M and N are water plants			

40. Classify all the following animals into two groups using the table provided. Give a heading for each group. [3]

silverfish	bat	ostrich	butterfly
------------	-----	---------	-----------


41. Study the two animals below.



bee



pigeon

Write down two similarities between the bee and the pigeon. (Do not compare sizes and shapes.) [2]

(a) \_\_\_\_\_

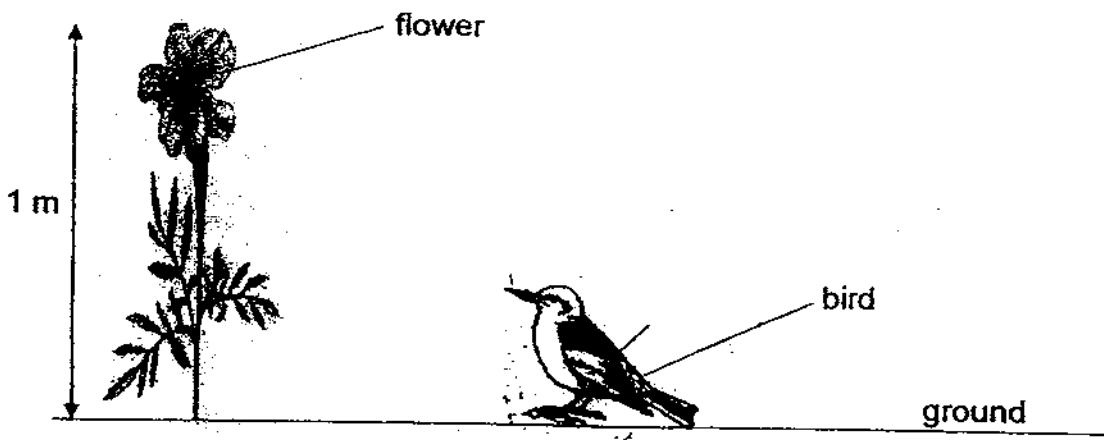
\_\_\_\_\_

(b) \_\_\_\_\_

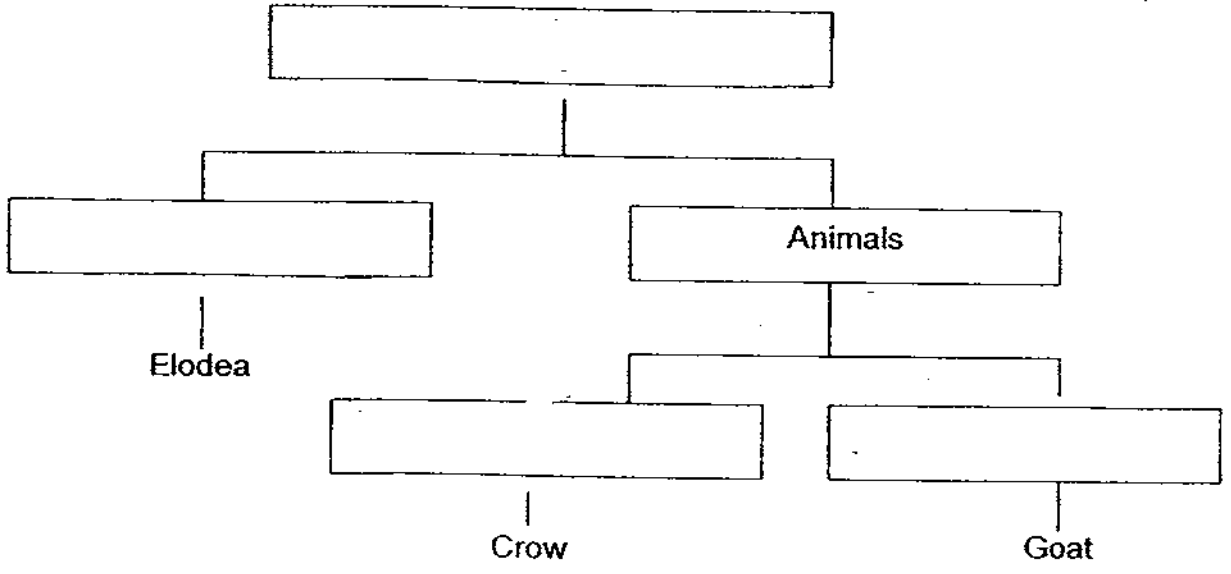
\_\_\_\_\_



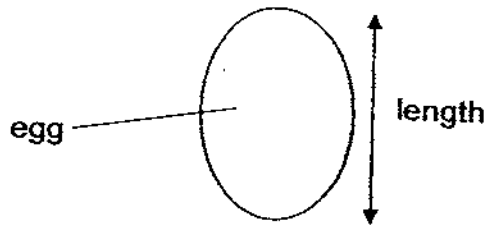
42. Study the picture below. The flower is 1 m above the ground. In the picture below, label the body parts of the bird which allow it to get to the flower and to feed on the nectar from the flower. [2]



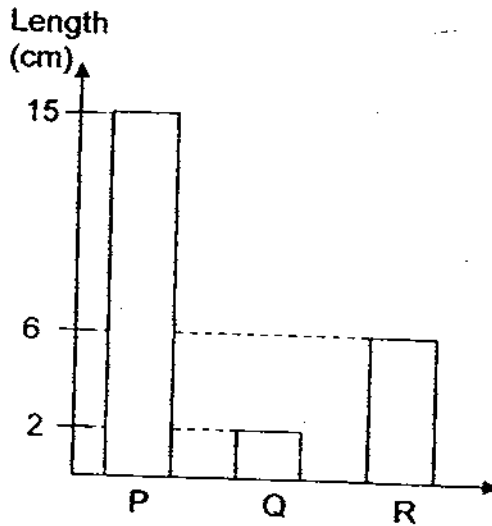
43. Study the classification chart below. Fill in the boxes with the correct headings. [4]



44. Wei Liang measured the lengths of three different eggs, P, Q and R as shown below. The eggs belong to three birds, chicken, ostrich and quail.



The bar graph below shows the lengths of the eggs.



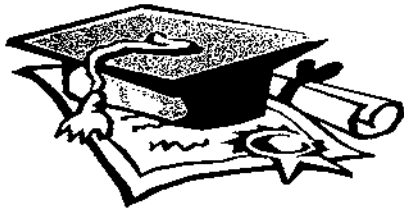
Write down the birds which lay the eggs in the table below.

[3]

Egg	Bird
P	
Q	
R	

----- END OF PAPER -----

Setters: Mdm Pauline Chew  
Ms Tan Si Ming

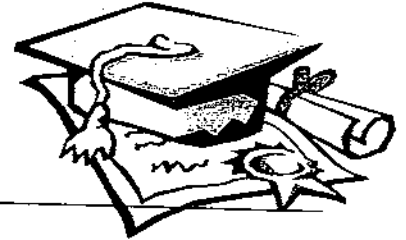


# ANSWER SHEET

**EXAM PAPER 2009**

**SCHOOL : NANYANG PRIMARY  
SUBJECT : PRIMARY 3 SCIENCE**

**TERM : SA1**



Q1	Q2	Q3	Q4	Q5	Q6	Q7	Q8	Q9	Q10	Q11	Q12	Q13	Q14	Q15	Q16	Q17
4	3	1	1	4	4	2	3	2	2	4	3	4	3	1	2	4
Q18	Q19	Q20	Q21	Q22	Q23	Q24	Q25	Q26	Q27	Q28	Q29	Q30				
2	4	3	4	2	4	3	4	3	3	2	2	2				

31) To make sure continuity of their type.

32)



33) Flippers  
Seal  
Turtle

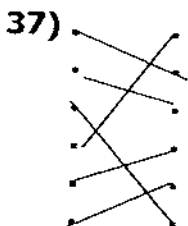
Whole Body  
earthworm  
cobra

Legs  
millipede  
hamster

34) It needs sunlight to make food.

35) C, E, F, D

36) a) Both reproduce from spores.  
b) They do not bear flowers.



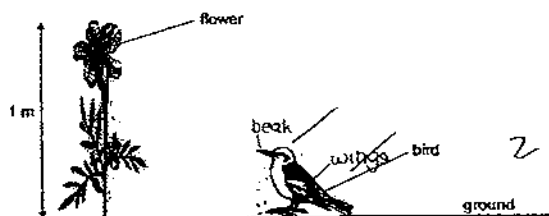
38)a)The watermelon is a flowering plant and has a lot of seeds.  
b)Rambutan, Moss

39)a)Not b)T c)Not d)T

40)Can fly                      Cannot fly  
Butterfly                      Silverfish  
Bat                              Ostrich

41)a)Both have wings.  
b)Both can fly.

42)



43)                      Living things

Plants

Animals

Elodea

birds

mammals

44)P: Ostrich  
Q: Quail  
R: Chicken