

ANGLO-CHINESE SCHOOL
(JUNIOR)



SEMESTRAL ASSESSMENT 1 (2010)
PRIMARY 3

SCIENCE

BOOKLET A

Friday

14 May 2010

1 hour 30 minutes

Name : _____ ()

Class : P3 _____

INSTRUCTIONS TO PUPILS

DO NOT TURN OVER THE PAGES UNTIL YOU ARE TOLD TO DO SO

Follow all instructions carefully.

There are 25 questions in this booklet.

Answer **ALL** questions.

INFORMATION FOR PUPILS

The total marks for this booklet is 50.

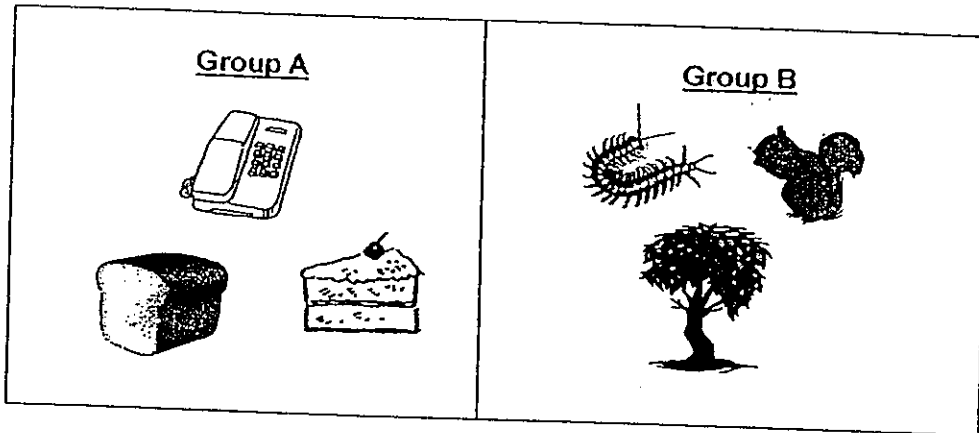
The total time for Booklets A and B is 1 hour 30 minutes.

This question paper consists of 10 printed pages. (Inclusive of cover page)

Section A (50 marks)

For each question from 1 to 25, four options are given. One of them is the correct answer. Choose the correct option (1, 2, 3 or 4) and shade the correct oval on the Optical Answer Sheet (OAS) provided.

1. The diagram below shows two groups of things.



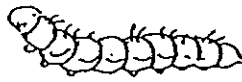
The things are classified according to whether they are _____.

- (1) heavy or light
- (2) strong or weak
- (3) plants or animals
- (4) living things or non-living things

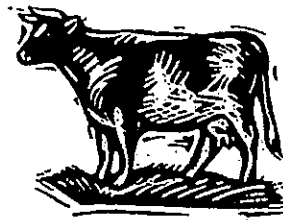
2. Study the animals below carefully.



Zebra



Caterpillar



Cow

Which of the following characteristics can be used to group the above animals together?

- (1) They have six legs.
- (2) They feed on plants.
- (3) They live in a garden.
- (4) They give birth to their young.

3. Joe saw an animal at the Singapore Botanical Gardens. He noticed that it could swim and fly. Which one of the following animals did Joe see?

- (1) bee
- (2) frog
- (3) swan
- (4) snake

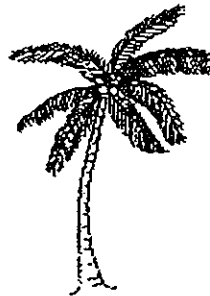
4. Some trees are shown below.



A



B



C



D

Which of the trees above would be suitable for planting along a stretch of road to provide the most shade?

- (1) A
- (2) B
- (3) C
- (4) D

5. Which of the followings are true of all living things?

- A They will die.
- B They can reproduce.
- C They make their own food.
- D They need air and water only.

- (1) A and B only
- (2) A and D only
- (3) B and C only
- (4) C and D only

6. Sam classified the leaves into 2 groups as shown below. Which one of the following best describes the shape of each leaf?

Leaf A



Leaf B



	Leaf A	Leaf B
(1)	oval	round
(2)	palm	heart
(3)	heart	palm
(4)	round	heart

7. Duck A lives in Farmer Wong's farm and Duck B is used by his children during bath time. What is the difference between Duck A and Duck B?



Duck A



Duck B

- (1) Duck A has fur but Duck B has feathers.
 (2) Duck A has wings but Duck B has flippers.
 (3) Duck A does not give birth but Duck B gives birth.
 (4) Duck A does not need help to move but Duck B needs help to move.
8. Michelle was preparing dinner for her family. She 'cried' as she was cutting some onions in the kitchen. Which characteristics of living things did Michelle show?

Living things can _____.

- (1) grow
 (2) reproduce
 (3) respond to changes
 (4) move by themselves

9. The bark of a tree protects the _____.

- (1) root
- (2) trunk
- (3) leaves
- (4) branches

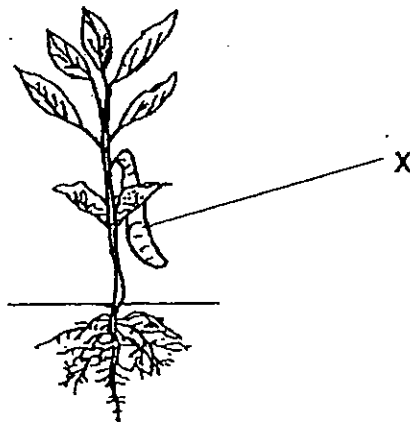
10. The diagram below shows a tree.



The branches and leaves help to take in _____.

- (1) more warmth
- (2) more water from the air
- (3) as much sunlight as possible
- (4) as much nutrients as possible

11. The picture below shows a string bean plant.



Part X is the _____.

- (1) leaf
- (2) fruit
- (3) root
- (4) flower

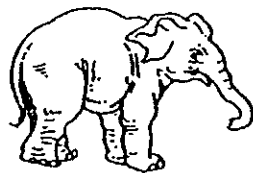
12. The table below shows how some plants are classified.

A	B	C
Rain tree Coconut tree	Allamanda Bougainvillea	String bean Money plant

In which group would you put Ixora?

- (1) A
 (2) B
 (3) C
 (4) None of the above
13. Tom loves to eat fruits. Which of the following fruits has seed(s) that Tom would not usually eat?
- (1) Kiwi
 (2) Mango
 (3) Banana
 (4) Strawberry
14. Which of the following statements is true for both allamanda and water lily?
- (1) Both are flowering plants.
 (2) Both reproduce from spores.
 (3) Both cannot make their own food.
 (4) Both have flowers that grow in clusters.
15. Which one of the following animals reproduces in a way that is different from the rest?

(1)



Elephant

(2)



Cow

(3)



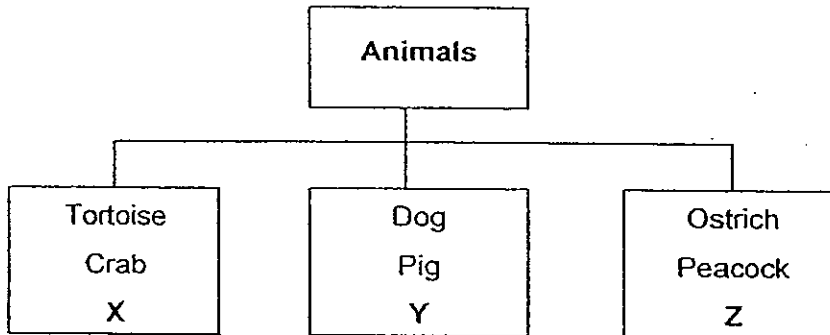
Dog

(4)



Platypus

16. The animals below have been grouped according to their outer coverings. What animals can X, Y and Z be?



	X	Y	Z
(1)	Sparrow	Porcupine	Snail
(2)	Snail	Polar bear	Emu
(3)	Lobster	Emu	Porcupine
(4)	Polar Bear	Lobster	Sparrow

17. Which characteristic(s) about animals is/are false?

- A All animals grow.
 B ~~All~~ animals give birth.
 C All animals feed on other living things.

- (1) ~~A~~ only
 (2) A and C only
 (3) B and C only
 (4) A, B and C

18. Sue gave two types of food, vegetables and meat, to Animal H. After a few days, she noticed that the amount of vegetables did not change but the meat was gone.

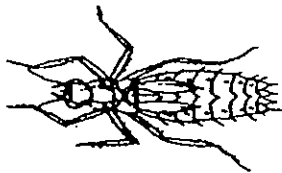
Animal H is probably a _____.

- (1) dog
 (2) rabbit
 (3) giraffe
 (4) caterpillar

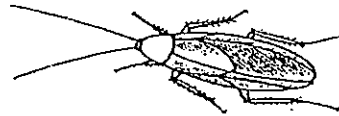
19. The table below shows the characteristics of 4 animals. A tick (✓) represents that the animal has that characteristic. Which animal best represents the whale?

	Animal	Has 6 legs	Suckles its young	Reproduce by laying eggs	Live in water
(1)	A			✓	
(2)	B	✓		✓	✓
(3)	C		✓		
(4)	D		✓		✓

20. Study the diagrams of the two animals below. Based on what you observe, both Animals P and Q _____.



P



Q

- (1) can fly
 (2) have 6 legs
 (3) spread diseases
 (4) live in the same place
21. Three boys, Max, Ben and Joe, studied the classification table below.

Have wings	Have fins	Have 6 legs	Have hair on their body
Penguin	Guppy	Damselfly	Bat
Sparrow	Shark	Mosquito	Human

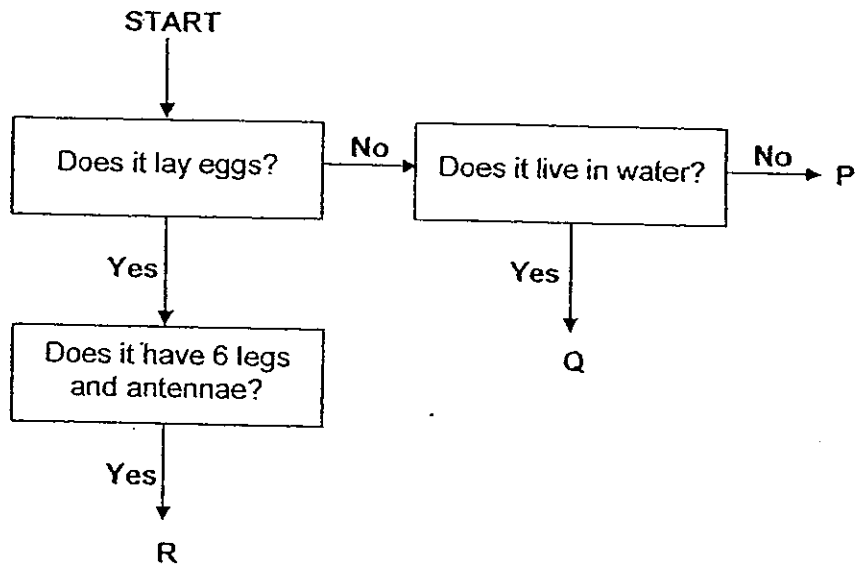
They then made the following statements:

- Max: The table shows that a penguin and sparrow can fly.
 Ben: The table shows that animals are grouped according to their common characteristics.
 Joe: The table shows that animals are grouped according to the way they move.

Who made the correct statement(s)?

- (1) Ben only
 (2) Joe only
 (3) Ben and Max only
 (4) Joe and Max only

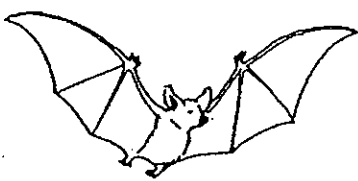



22. Study the flowchart on 3 animals.



Which of the following best represents P, Q and R?

	P	Q	R
(1)	Seal	Spider	Shark
(2)	Hamster	Dolphin	Ant
(3)	Dolphin	Seal	Spider
(4)	Ant	Shark	Hamster

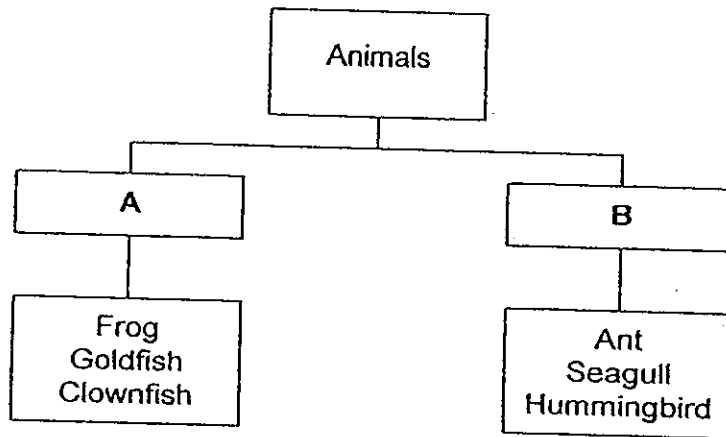
23. Which animal is not a bird?

(1)  Bat	(2)  Ostrich
(3)  Eagle	(4)  Sparrow

24. Which one of the following animals does not move like the rest?

- (1) Snake
- (2) Hamster
- (3) Millipede
- (4) Centipede

25. Study the classification diagram below.



Which one of the following headings best represent A and B?

	A	B
(1)	Has fins	Has no fins
(2)	With scales	Without scales
(3)	Live in water only	Live on land only
(4)	Lay eggs in water	Lay eggs on land

ANGLO-CHINESE SCHOOL
(JUNIOR)



SEMESTRAL ASSESSMENT 1 (2010)
PRIMARY 3

SCIENCE

BOOKLET B

Friday

14 May 2010

1 hour 30 minutes

Name : _____ ()

Class : P3 _____

INSTRUCTIONS TO PUPILS

DO NOT TURN OVER THE PAGES UNTIL YOU ARE TOLD TO DO SO

Follow all instructions carefully.

There are 14 questions in this booklet.

Answer **ALL** questions.

INFORMATION FOR PUPILS

The number of marks is given in brackets [] at the end of each question or part question.

The total marks for this booklet is 40.

The total time for Booklets A and B is 1 hour 30 minutes.

This question paper consists of 11 printed pages. (Inclusive of cover page)

BOOKLET A	150
BOOKLET B	140
TOTAL	1100 90
Parent's signature/ Date:	

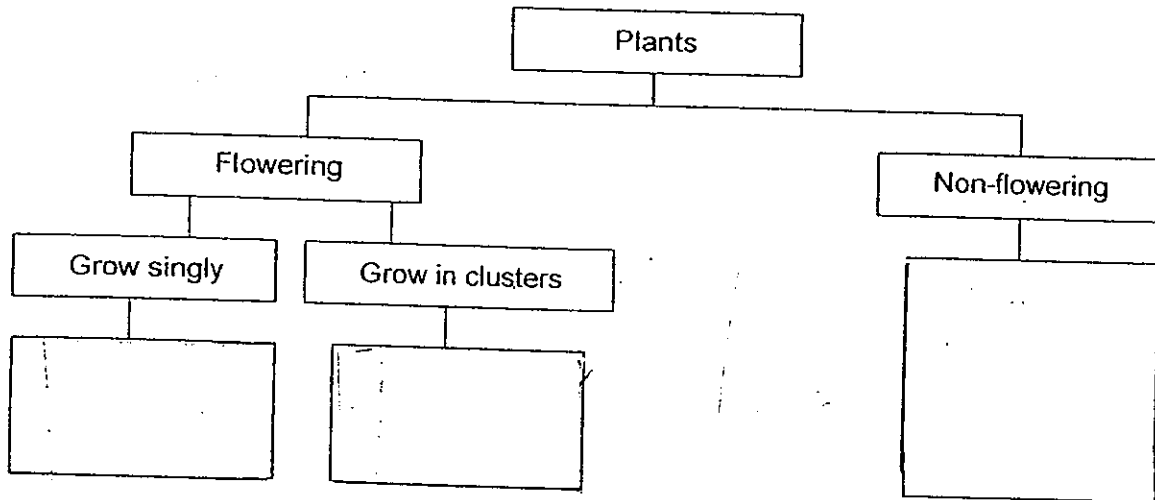
Section B (40 marks)

For questions 26 to 39, write your answers in this booklet. The number of marks is shown in the brackets [] at the end of the question or part question.

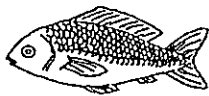
26. Classify the following plants in their correct group.

[3]

Rose	Hibiscus	Ixora
Bird's Nest Fern	Frangipani	Moss



27. The diagrams below show two living things, J and K.



Living thing J



Living thing K

(a) How are they similar in the way they reproduce?

[1]

(b) How are they different in their outer coverings?

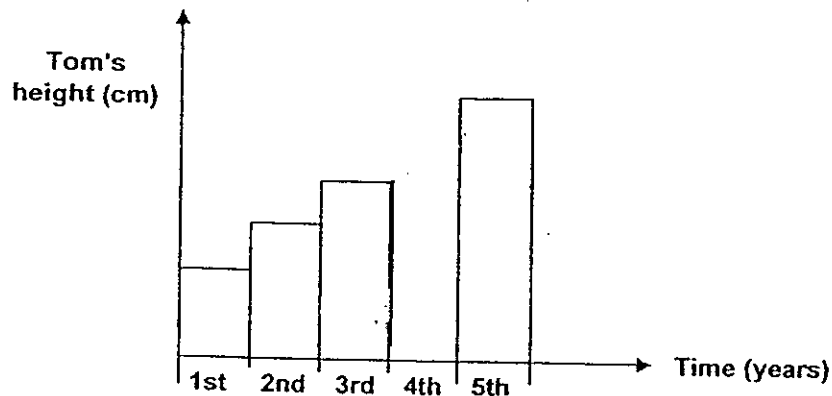
[1]

(c) Name another animal that has the same outer covering as K.

[1]

--

28. (a) The graph below shows Tom's height from the time he was born to the time he was 5 years old. Complete the graph below to show Tom's height when he was 4 years old. [1]



- (b) Based on the change in height, state one characteristic of a living thing. [1]

A living thing can _____

- (c) The baby will eventually become an adult. He will be able to _____ to ensure continuity of his own kind. [1]

29. Justin found a millipede in his backyard. He used his finger to touch it.



- a) What would he observe when he touched the millipede? [1]

- b) Why did the millipede behave in this way? [1]

- c) Circle the living thing which behaves in a similar manner when it is touched. [1]

mimosa

balsam

aloe vera

--

30. Study the fruits of the durian and rambutan below. Based on your observation, state one similarity and one difference between the fruits. (Do not compare shape and size) [2]



Durian



Rambutan

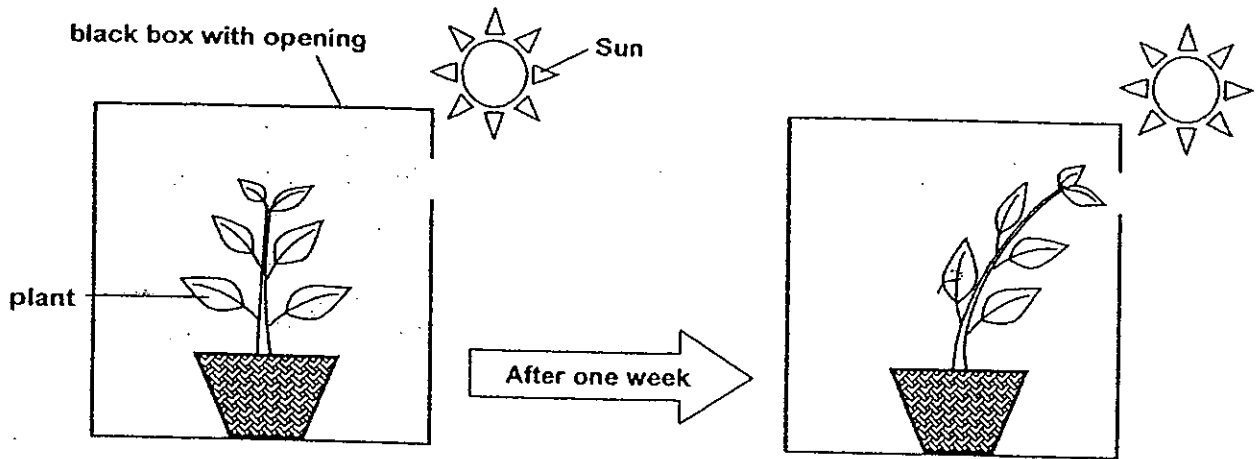
(a) Similarity : _____

(b) Difference : _____

(c) Why are seeds important to a plant? [1]

--

31. Sumei set up the experiment shown below for a week. The diagrams show how the plant looked at the start and at the end of the experiment.



(a) Why did the plant bend towards the opening?

[1]

(b) Without removing the plant from the box, what could Sumei do to make the plant grow upright again? Put a tick in the correct box. [1]

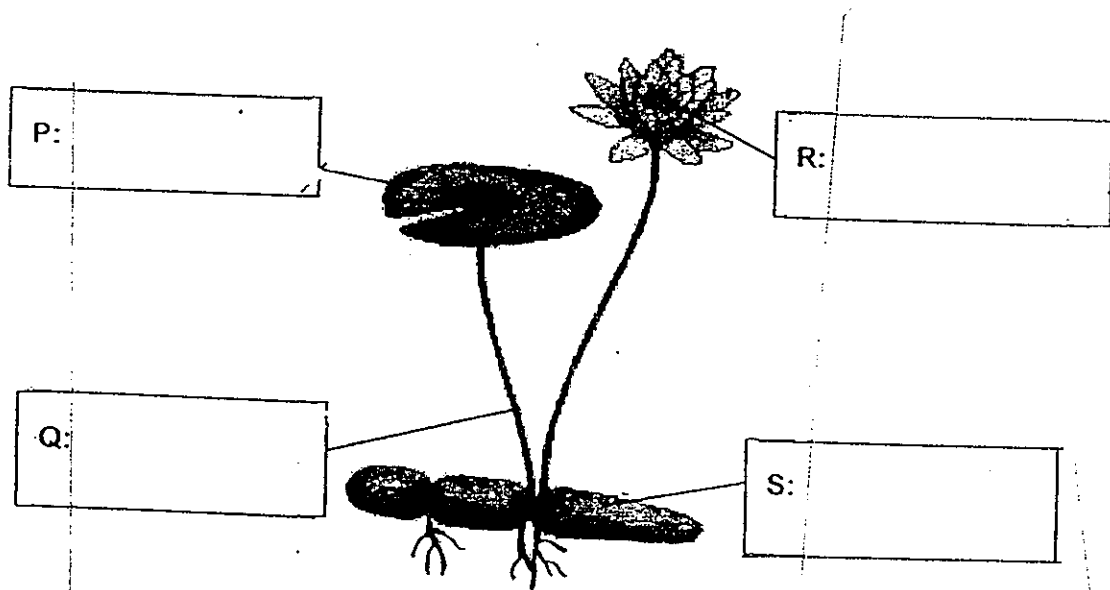
Suggested actions	Put a tick (✓)
Seal the opening.	
Make an opening on the top only.	
Seal the opening and make an opening on top.	

32. Study the picture of the morning glory below.



(a) The morning glory needs support because _____ [1]

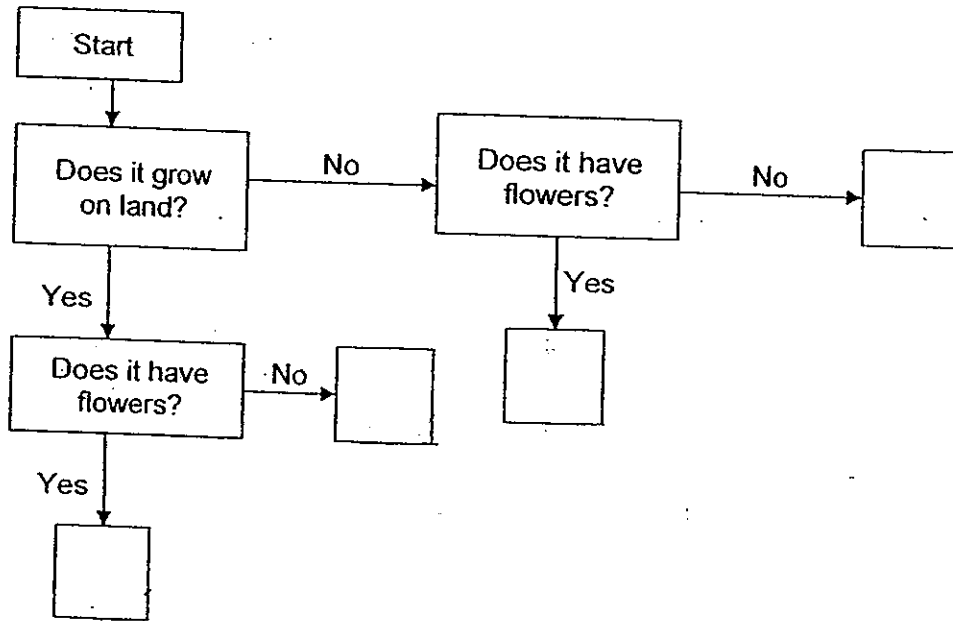
(b) Study the picture of the water lily below. Identify and label the parts P, Q, R and S. [2]



33. The table below gives information on four plants (P, Q, R and S) based on two characteristics.

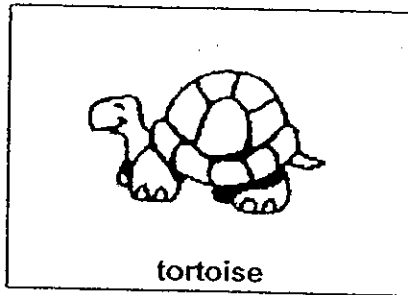
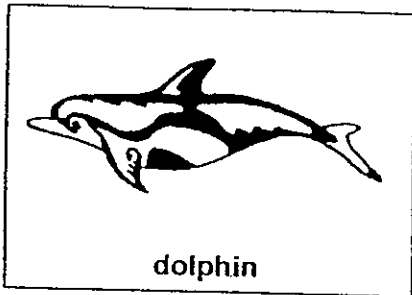
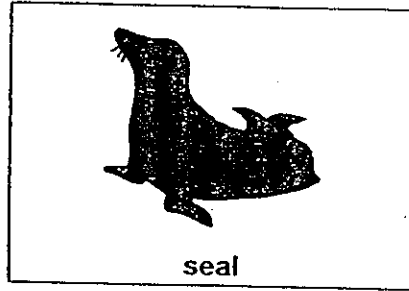
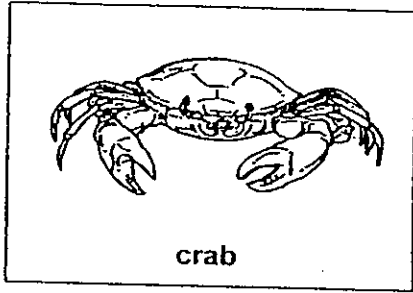
Characteristics	P	Q	R	S
bears fruit	✓		✓	
grows on land			✓	✓

(a) Using the information above, write P, Q, R and S into the correct boxes in the flowchart below. [2]



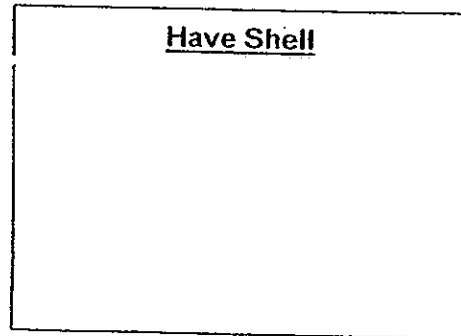
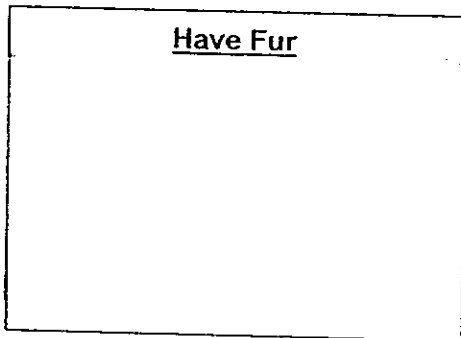
(b) The lotus is likely to be plant _____ [1]

34. Sue has four picture cards of some animals as shown below.

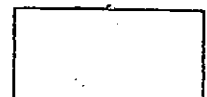


(a) Help her to classify them into the correct boxes.

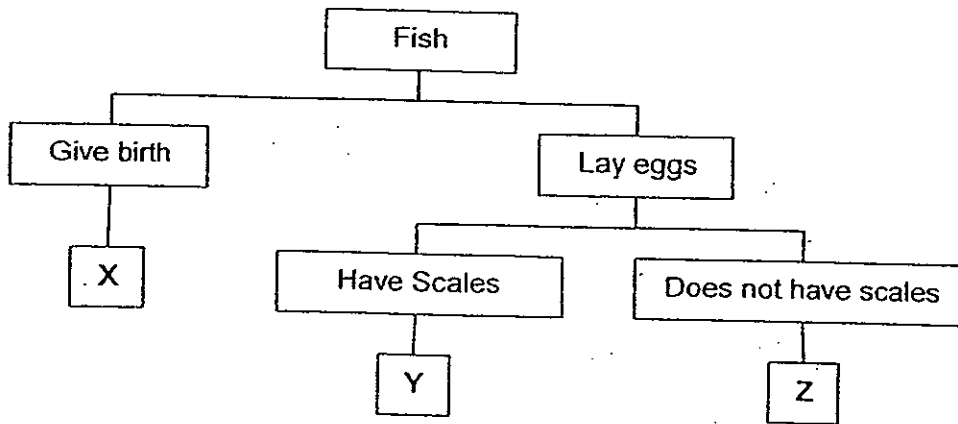
[2]



(b) Name another way the four animals can be classified such that there are two animals in each group. [1]



35. Study the classification chart below.



(a) Based on the classification chart, state one similarity and one difference between Fish Y and Fish Z. [2]

Similarity : _____

Difference : _____

(b) What could Fish X be?

36. Animal Z has the following characteristics.

- ✓ Lives on land
- ✓ Has Hair
- ✓ Lays eggs

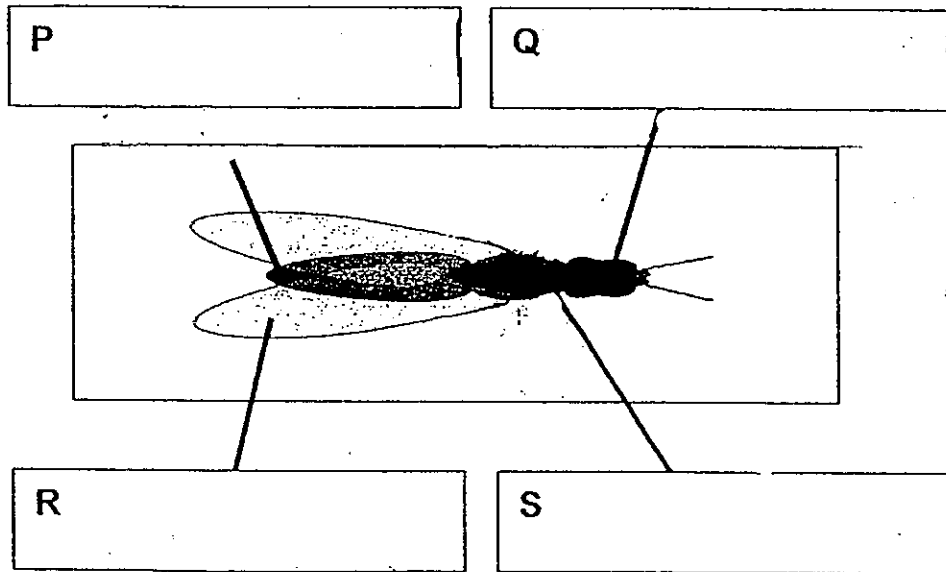
(a) Which group of animals does Animal Z belong to? [1]

(b) Give an example of Animal Z. [1]

37. The diagram below shows an insect.

(a) Identify and label the parts P, Q, R and S. [2]

In the diagram below, draw in the six legs of the insect in their correct positions. [1]



38. Observe the two animals below.



Penguin

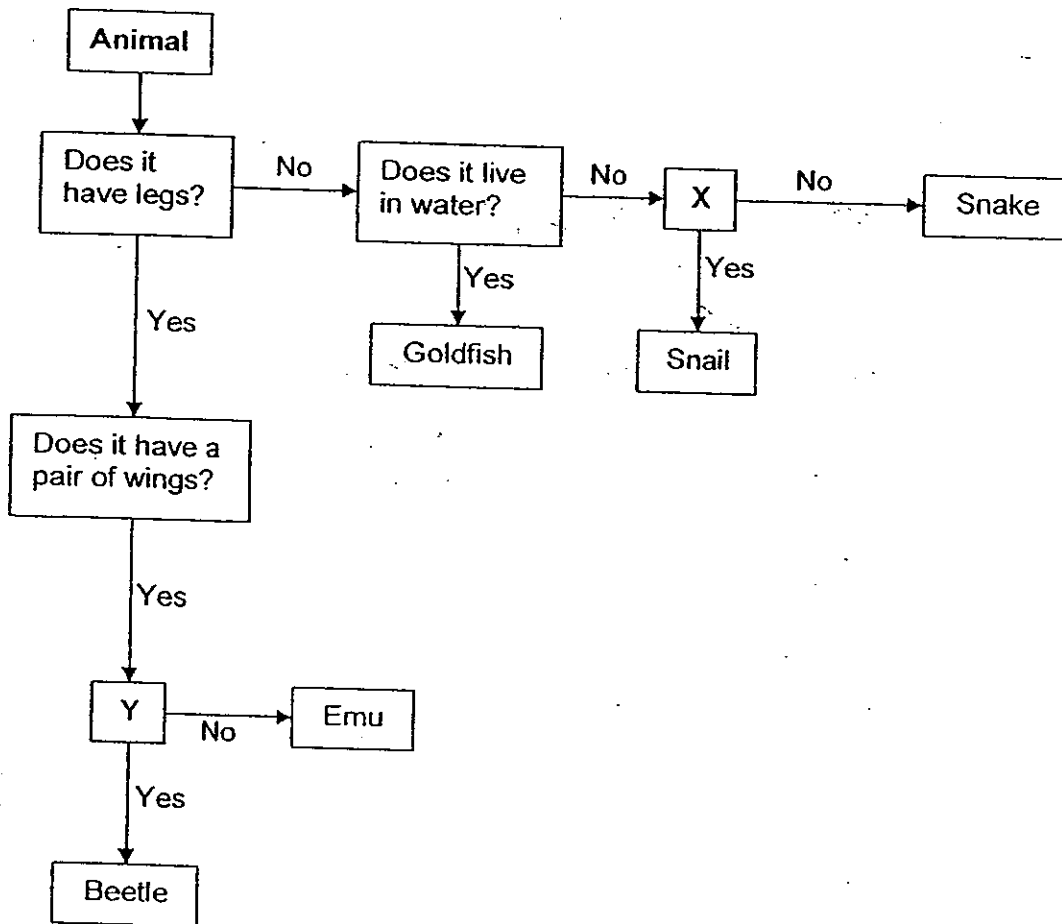


Pigeon

(a) Besides having feathers, name 2 other characteristics which both animals have in common. [2]

(b) How are feathers useful to both birds? [1]

39. Study the flowchart below.



(a) The letters X and Y represent questions that are used to classify animals in the flowchart above. Write the letters, X and Y, in the box given below to represent the questions in the flowchart. Each letter can only be used once. [2]

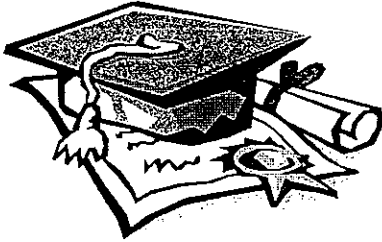
Question	Letter
Can it fly?	
Does it lay eggs?	
Does it have a shell?	
Does it have feathers?	

(b) Give an example of an animal which has all the same characteristics as the beetle in the flowchart above. [1]

End of paper

--



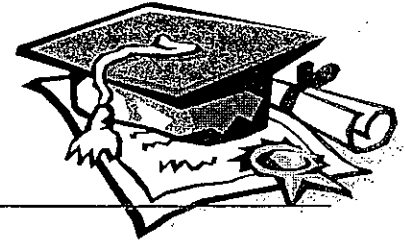


ANSWER SHEET

EXAM PAPER 2010

**SCHOOL : ACS (JUNIOR) PRIMARY
SUBJECT : PRIMARY 3 SCIENCE**

TERM : SA1



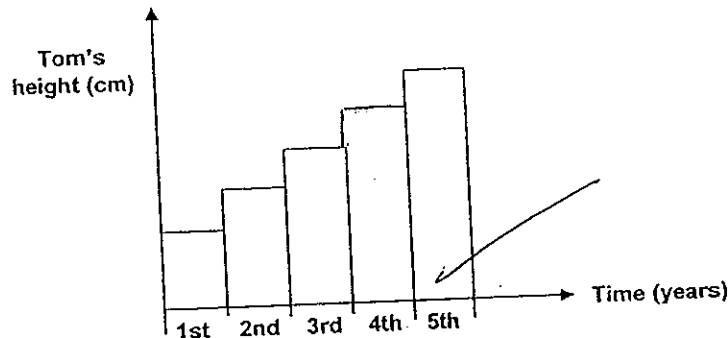
Q1	Q2	Q3	Q4	Q5	Q6	Q7	Q8	Q9	Q10	Q11	Q12	Q13	Q14	Q15	Q16	Q17
4	2	3	2	1	3	4	3	2	3	2	2	2	1	4	2	1

Q18	Q19	Q20	Q21	Q22	Q23	Q24	Q25
1	4	2	1	2	1	1	4

26) Hibiscus, rose Frangipani, Ixora Bird's Nest Fern, Moss

27) a) Both of them lay eggs.
 b) Living thing J has scales as its outer covering while living thing K has feathers as its outer covering.
 c) The sparrow has the same outer covering as living thing K.

28) a)



b) grow
 c) reproduce

29) a) He would observe that the millipede will curl up.
 b) The millipede behaved in this way as it is responding to touch.
 c) Mimosa.

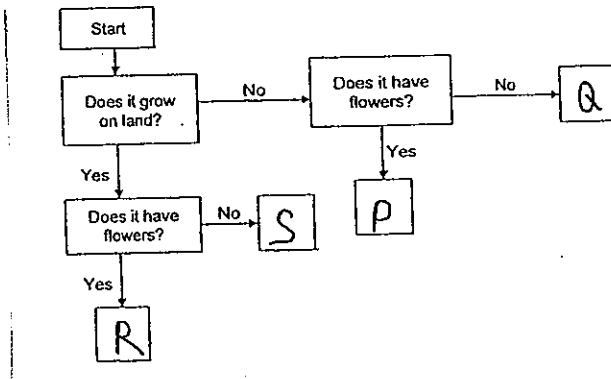
30) a) The durian and the rambutan have rough skin.
 b) The durian has a few seeds while the rambutan has one.
 c) Seeds are important to plants because it helps the plant to reproduce.

31) a) The plant bent towards the opening as it needs sunlight and there is sunlight only at the opening.
 b) Seal the opening and make an opening on top.

32)a)it has a weak stem.

b)P: leaf Q: stem R: flower S:stem

33)a)



b)P.

34)a)Have Fur
Dolphin
Seal

Have Shell
tortoise
crab

b)Whether they give birth to young alive or whether they lay eggs.

35)a)Similarity: Fish Y and Z lay eggs.

Difference: Fish Y have scales while Fish Z do not have scales.

b)Fish X could be a sword tail.

36)a)Animal Z belong to the group of mammals.

b)An example is the platypus.

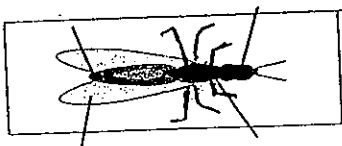
37)a)P: abdomen

Q: head

R: wings

S: thorax

b)



38)a)Both have beaks.

b)It keeps the birds warm.

39)a)Can it fly----Y

Does it have a shell---X

b)Another example is the butterfly.