



RED SWASTIKA SCHOOL

SCIENCE 2015 SEMESTRAL EXAMINATION 1 PRIMARY 3

Name : _____ ()

Class : Primary 3/ _____

Date : 12 May 2015

BOOKLET A

Total time for Booklets A & B: 1h 30 min

Booklet A: 18 questions (36 marks)

Note:

1. Do not open the booklet until you are told to do so.
2. Read carefully the instructions given at the beginning of each part of the booklet.
3. Do not waste time. If the question is too difficult for you, go on to the next question.
4. Check your answers thoroughly and make sure you attempt every question.
5. In this booklet, you should have the following:
 - a. Page 1 to Page 9
 - b. Questions 1 to 18

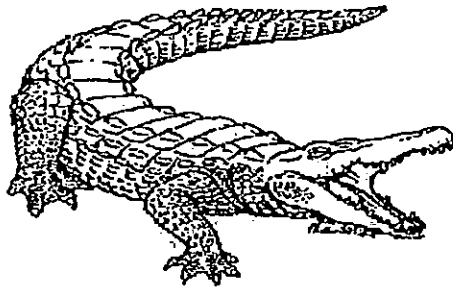
Section A: Multiple Choice Questions

For Questions 1 to 18, choose the most suitable answer and shade its number in the OAS provided.

- 1 Mr Tan scolded his daughter and her eyes became teary. What characteristic of living things does this show?

Living things can _____.

- (1) grow
 - (2) reproduce
 - (3) move on their own
 - (4) respond to changes
- 2 What outer body covering does this animal have?



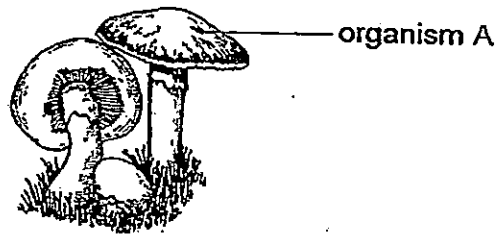
- (1) fur
 - (2) shell
 - (3) scales
 - (4) feathers
- 3 Four students made the following statements about mammals.

Joan	:	The females produce milk for their young.
Gabriella	:	They live on land only.
Mei Ling	:	They have hair as outer body covering.
Ashley	:	All mammals give birth to their young alive.

Which student(s) has/have made the correct statement(s)?

- (1) Ashley only
- (2) Mei Ling only
- (3) Joan and Mei Ling only
- (4) Gabriella, Joan and Ashley only

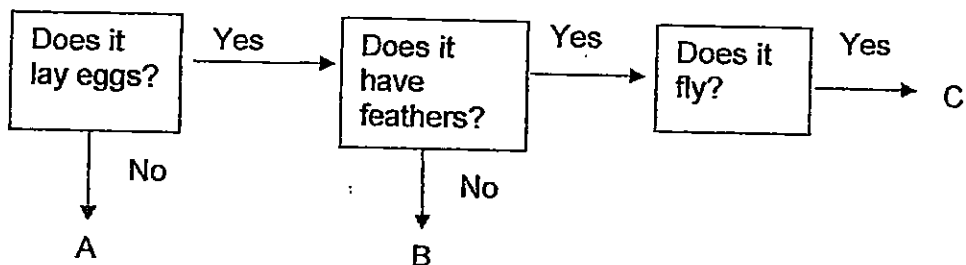
4 Pillay found organism A growing in the school garden.



Which of the following correctly describes the organism?

	Type of organism	Reproduce by
(1)	fungi	spores
(2)	fungi	seeds
(3)	flowering plant	seeds
(4)	non-flowering plant	spores

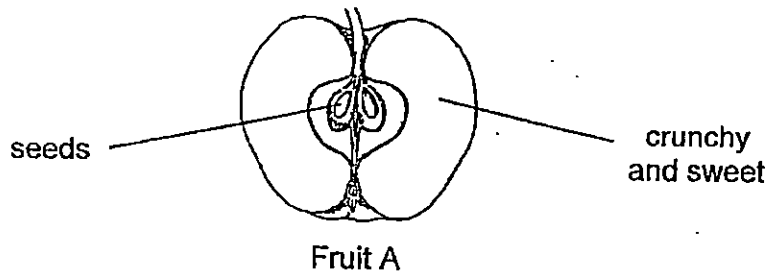
5 Study the flow chart below.



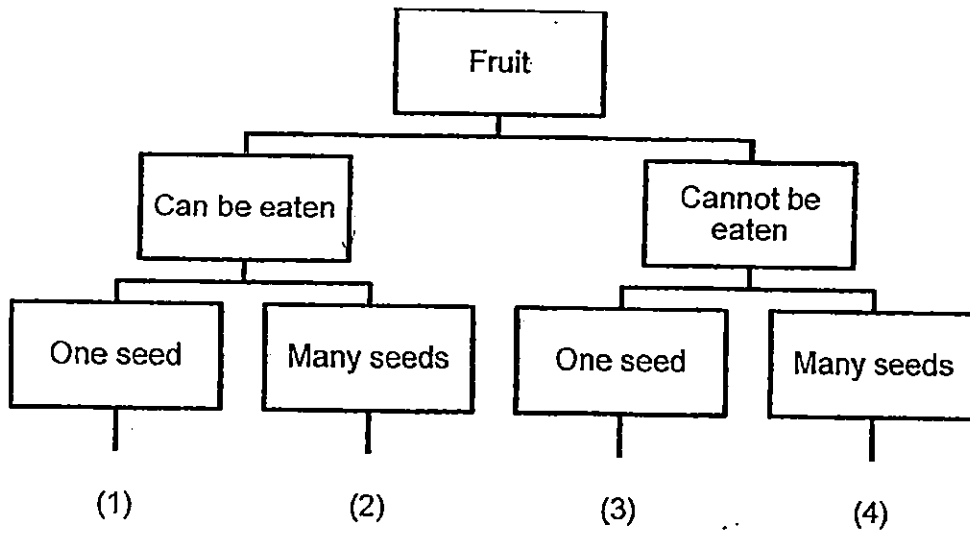
What animals do A, B and C represent?

	A	B	C
(1)	goldfish	parrot	cat
(2)	cat	goldfish	parrot
(3)	cockroach	goldfish	parrot
(4)	cat	parrot	bat

6 Mary cuts fruit A into half. The diagram shows what can be found inside the fruit.



Where can fruit A be placed in the classification chart below?



7 The table provides some information about a group of objects A, B and C.

Object	Able to reproduce?	Able to make food?	Need water to survive?
A	no	no	no
B	yes	no	yes
C	yes	yes	yes

Based on the table, which of the following is correct?

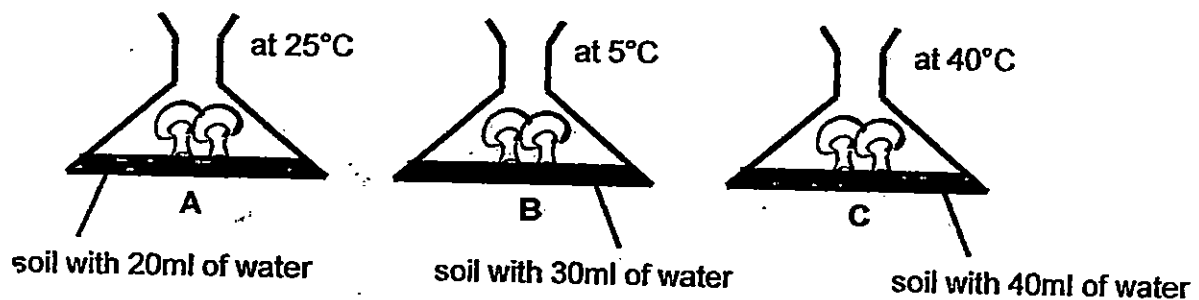
	Living thing	Non-living thing
(1)	B	A, C
(2)	C	A, B
(3)	A, C	B
(4)	B, C	A

- 8 Shannon wants to find out the type of food that insect X prefers to eat. She prepares four set-ups using similar containers in her experiment.

Set-up	Number of insect X	Type of food	Amount of food (g)
A	10	candy	30
B	10	candy	50
C	10	bread	30
D	15	bread	50

Which two set-ups must she compare to ensure that it is a fair test?

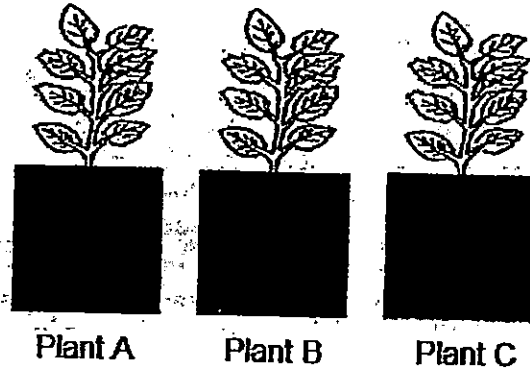
- (1) A and B
 - (2) A and C
 - (3) B and C
 - (4) B and D
- 9 Frank wanted to find out if the amount of water affected the growth of mushrooms. He created three set-ups, A, B and C as shown below.



His teacher said that he did not conduct a fair experiment. What can Frank do to conduct a fair experiment?

- (1) Add one more mushroom to set-up B.
- (2) Reduce the amount of water from set-up A.
- (3) Use the same temperature for all the set-ups.
- (4) Change the container for set-up C.

- 10 Mrs Lee added different amounts of water daily to three plants. The plants had the same height and size at the start of the experiment. The plants were placed in the same location at the garden.



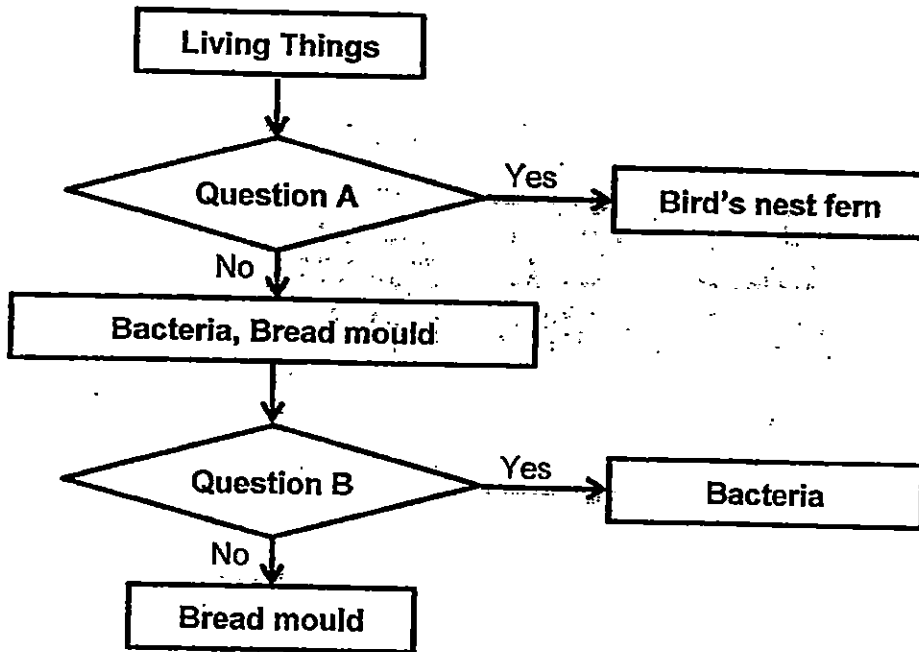
After two weeks, the height of the plants were measured and recorded in the table below.

Plant	Amount of water added daily	Height of plant at the end of 2 weeks
A	200 ml	25 cm
B	300 ml	35 cm
C	400 ml	48 cm

Which of the following is correct?

- (1) Plant A grew the least as it has the most water. ~~X~~
 - (2) Plant C grew the tallest as it had the most water.
 - (3) Plant B grew more than plant A as plant B had less water.
 - (4) Plant C grew more than plant B as plant C had less water.
- 11 Hayley knows that there is only a little sugar left in a container just by looking at the container. Which one of the following materials is the container likely to be made of?
- (1) wood
 - (2) metal
 - (3) ceramic
 - (4) clear glass

- 12 Study the flow chart below. Three living things have been classified based on their characteristics.



Based on the flow chart, what can question A and question B be?

	Question A	Question B
(1)	Are they fungi?	Do they make us fall sick?
(2)	Are they fungi?	Do they reproduce by spores?
(3)	Are they non-flowering plants?	Do they need a microscope to be seen?
(4)	Are they flowering plants?	Do they need a microscope to be seen?

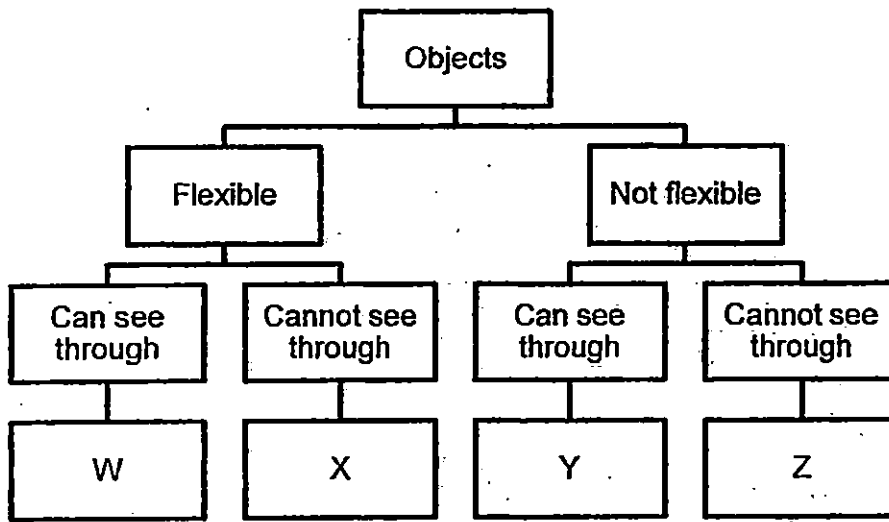
- 13 The following is a description of material B.

- bends easily without breaking
- can come from animals or plants
- usually used to make objects such as clothes



Which of the following is most likely to be material B?

- (1) fabric
- (2) metal
- (3) rubber
- (4) ceramic

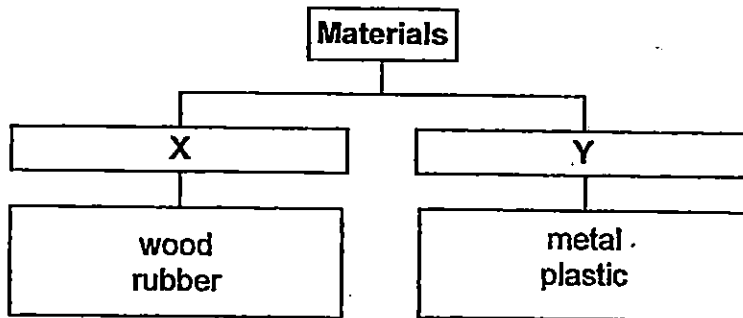
14 Study the classification table below carefully.



In which group would the spectacle lens and the rubber gloves be placed?

	 spectacle lens	 rubber gloves
(1)	W	X
(2)	Y	Z
(3)	W	Z
(4)	Y	X

15 Study the classification table below.



Which of the following are the correct headings for X and Y?

	X	Y
(1)	from animals	from the ground
(2)	from plants	from animals
(3)	from plants	from the ground
(4)	from the ground	from plants

16 Jeremy wanted to find out if four materials float or sink in water. He conducted an experiment and recorded the results in the table shown.

Material	Metal	Non-metal	Floats in water
S	√		√
T		√	
U	√		
V		√	√

Which material was most likely wood?

- (1) S
- (2) T
- (3) U
- (4) V

- 17 Raincoats are usually made from plastic. What is the most important physical property for the material used to make a raincoat?



It must _____.

- (1) be breakable
 - (2) float on water
 - (3) be waterproof.
 - (4) allow light to pass through it
- 18 Winnie was given four different types of paper bags. She put similar oranges, one at a time, into each bag until it began to tear. She recorded her observation in a table as shown below.

Type of paper bags	Number of oranges put in the bag before it began to tear
P	9
Q	11
R	7
S	13

Based on the results from the table above, which one of the following statements is correct?

- (1) Material P is stronger than Material Q.
- (2) Material Q is less flexible than Material P.
- (3) Material R is more flexible than Material S.
- (4) Material S is stronger than Material R.

End of Section A
Please check your answers.



RED SWASTIKA SCHOOL

SCIENCE 2015 SEMESTRAL EXAMINATION 1 PRIMARY 3

Name : _____ ()

Class : Primary 3/ _____

Date : 12 May 2015

BOOKLET B

8 Questions
24 Marks

In this booklet, you should have the following:

- Page 10 to Page 17
- Questions 19 to 26

MARKS

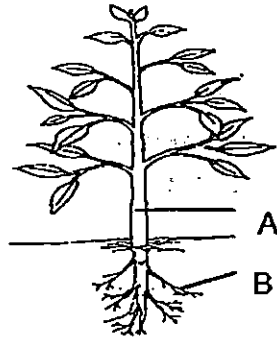
	OBTAINED	POSSIBLE
BOOKLET A		36
BOOKLET B		24
TOTAL		60

Parent's Signature : _____

Section B: Open-ended Questions

Answer all questions in the space provided.

19 Study the diagram below.

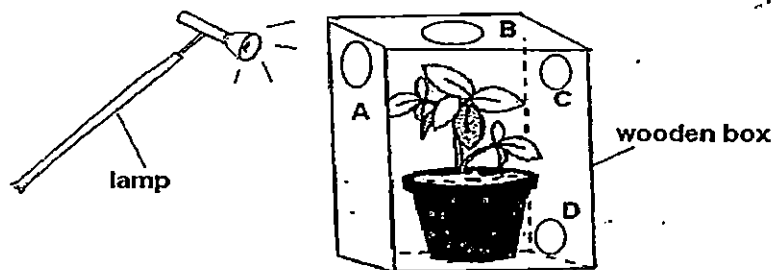


a) Label the parts of the plant marked A and B. (1m)

Part A: _____

Part B: _____

A plant was placed in a wooden box with 4 holes A, B, C and D. The lamp was switched on throughout the experiment. The lamp was the only source of light in the room.

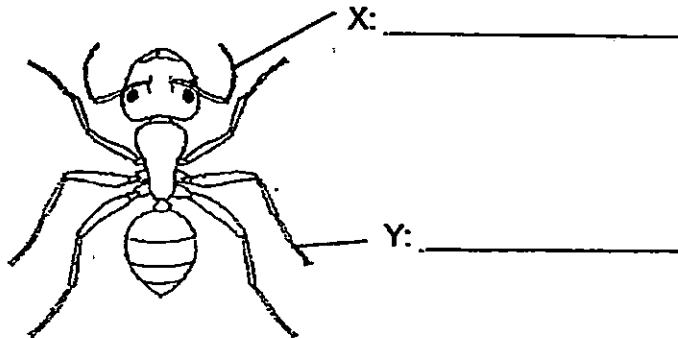


b) After some time, the plant was observed to grow towards a particular hole. Which hole was that? (1m)

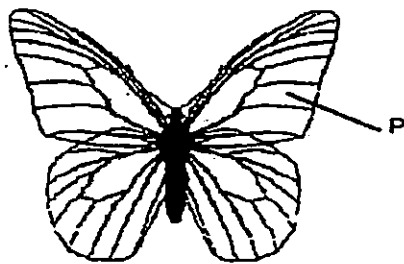
c) For the answer in part (b), which characteristic of living things does it show? (1m)

20 Aminah was given a picture of the animal shown.

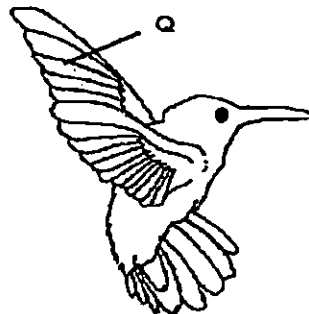
a) Identify part X and part Y of the animal. Write the answer in the blanks provided. (1m)



Study the two animals shown below.



insect

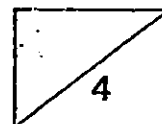


bird

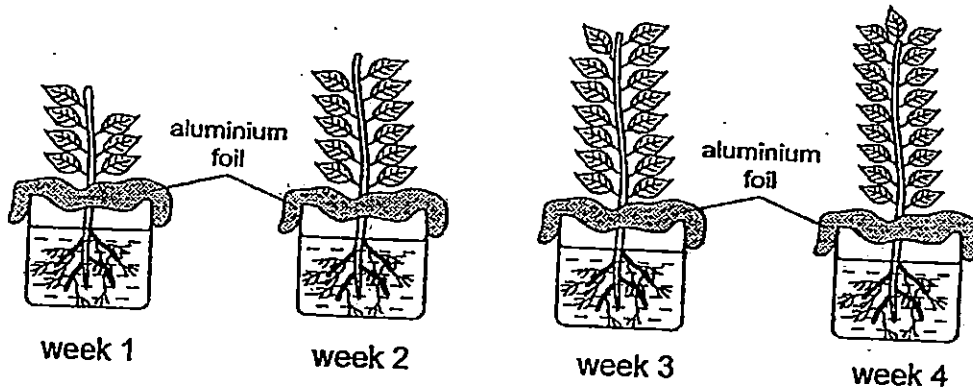
b) What is the similarity in function for part P and part Q for the two animals? (1m)

c) How are the two animals similar in terms of the way they reproduce? (1m)

d) Identify part Q. (1m)



21 Jackie carried out an experiment on a plant for four weeks as shown below.



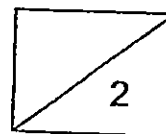
She placed the plant near the window. She made a marking on the container to show the water level at the start of the experiment.

At the end of each week, she re-filled the container so that the water level reaches the marking she had made. She recorded the amount of water she had to re-fill each week in the table below.

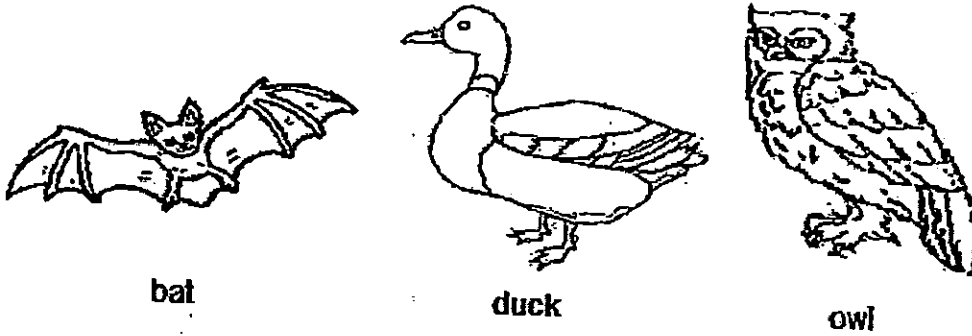
	At the end of			
	Week 1	Week 2	Week 3	Week 4
Amount of water added (ml)	170	?	195	220

a) Based on the diagram, state one difference between the plant at week 1 and the plant at week 3. (1m)

b) Predict the amount of water added at the end of the week 2. (1m)



22 Devi observed a group of animals as shown below.



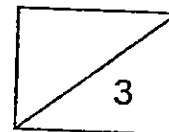
a) Which animal is not classified in the same group of living things as the other two animals? (1m)

Study the table below and answer the questions that follow.

Characteristic	Animal A	Animal B	Animal C
Can swim	✓	✓	✓
Has four legs	✗	✓	✗
Feeds on plants	✓	✓	✓

b) What is the similarity between animals A and C? (1m)

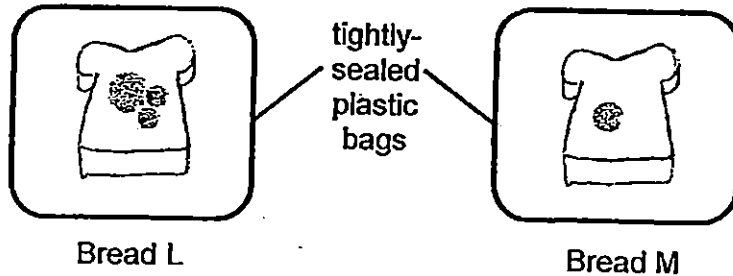
c) A duck feeds on plants. Can animal B be a duck? Why? (1m)



23 Raymond conducted an experiment with two pieces of bread taken from the same loaf of bread. One of the pieces of bread was toasted. Some water was added to the other piece of bread.

The toasted bread was cooled down before it was kept in the plastic bag. Both plastic bags were kept in the kitchen cupboard.

After two weeks, he found more mould growing on one piece of bread than the other.

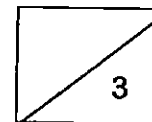


a) Based on the information above, which piece of bread, L or M, was most likely toasted? (1m)

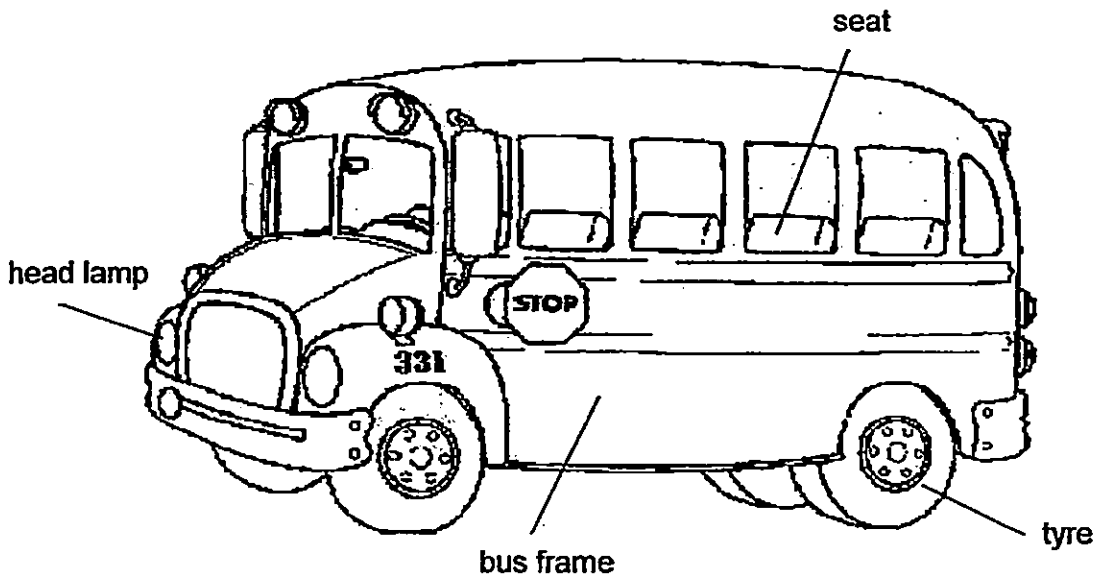
b) Name one condition necessary for bread mould to grow. (1m)

c) Raymond did another experiment with a new piece of bread. The bread was kept in the freezer for 10 days.

After 10 days, Raymond observed that no mould grew on the bread. Why was this so? (1m)



24 The diagram shows a bus.

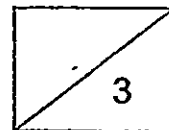


a) For each of the parts of the bus listed in the table below,

- (i) Identify a suitable material that is used to make the part.
- (ii) Write down the (physical property) of the material. (2m)

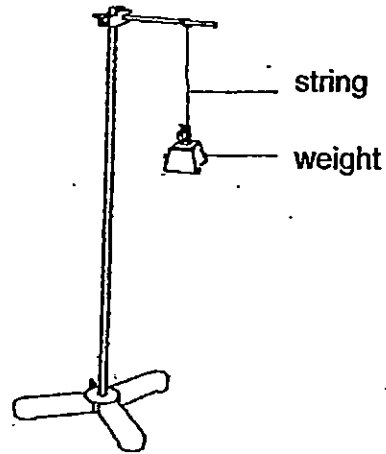
	(i) Material used	(ii) Physical Property of the material
tyre		
bus frame		

b) Can the head lamp be made from ceramic instead of glass? Why? (1m)



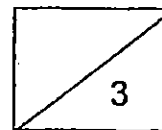
- 25 Charlene carried out an experiment with three types of strings. She hung 50g weights one at a time on each string until the string broke. She recorded her findings in the table below.

String	Weight hung on the string before the string broke
A	150g
B	100g
C	200g



- a) Which physical property of the strings was Charlene testing? (1m)
- _____
- b) Based on the results, what can be concluded about string B? (1m)
- _____
- c) Which of the following must Charlene keep the same for the experiment to be a fair test. Tick the correct box(es). (1m)

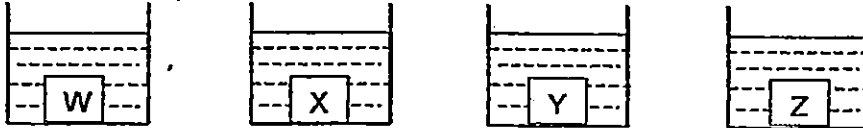
Variable to keep the same	Tick (✓) the correct box(es)
1. Length of the string	
2. Total number of weights added	
3. Material of the string	



26 There are 4 different types of materials, W, X, Y and Z of same thickness and size. Bryan set up an experiment to find out which material will absorb the most amount of water.

He placed the 4 materials into similar container containing 70 ml of water at the same time.

Start of experiment



After 5 minutes, he removed the materials and recorded the amount of water left in each container in the table below.

Material	Amount of water left in the container (ml)
W	69
X	47
Y	23
Z	55

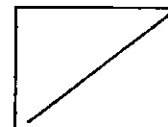
a) Based on the table, which material, W, X, Y or Z, absorbs the least water? (1m)

b) Which material, W, X, Y or Z, is the most suitable material for making a bath towel? (1m)

c) Explain your answer in part (b). (1m)

End of Booklet B

Please check your answers.





EXAM PAPER 2015

LEVEL : PRIMARY 3

SCHOOL : RED SWASTIKA SCHOOL

SUBJECT : SCIENCE

TERM : SA1

Q1	Q2	Q3	Q4	Q5	Q6	Q7	Q8	Q9	Q10
4	3	1	1	2	2	4	2	3	2
Q11	Q12	Q13	Q14	Q15	Q16	Q17	Q18		
4	3	1	4	3	4	3	4		

Q19a. Part A: Stem Part B: Roots

Q19b. A. Q19c. Living things respond to changes around them.

Q20a. X: feeler Q20a. Y: leg

Q20b. Allows / helps the animal to fly.

Q20c. Both animals reproduce by laying eggs.

Q20d. Wings

Q21a. The plant at week one was shorter and has lesser leaves than plant at week three.

Q21b. 185ml

Q22a. Bat

Q22b. Both animal A and C feed on plants.

Q22c. No, a duck has two legs, but animal B has four legs.

Q23a. Bread M

Q23b. Moisture / Water / oxygen / Air

Q23c.. No, mould grew on the bread as there was not enough / insufficient warmth in the freezer.

Q24a. Tyre – rubber – waterproof / flexible / strong

Q24a. Bus frame – metal – strong / waterproof

Q24b. No, ceramics does not allow light to pass through but the head lamp should allow (most) light to pass through.

Q25a. Strength of the string

Q25b. String B was the weakest because it holds the least weight before it broke.

Q25c. Length of the string.

Q26a. Material W

Q26b. Material Y

Q26c. The water left in the container was the least which shows that material Y absorbs the most amount of water.