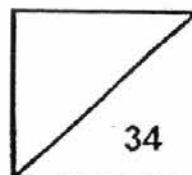




Rosyth School
Semestral Examination 1 for 2016
SCIENCE
Primary 3

Name: _____

Total
Marks:



Class: Pr 3 _____ Register No. _____ Duration: 1 h 30 min

Date: 11 May 2016 Parent's Signature: _____

BOOKLET A

Instructions to Pupils:

1. Do not open the booklets until you are told to do so.
2. Follow all instructions carefully.
3. This paper consists of 2 booklets, Booklet A and Booklet B.
4. For questions 1 to 17 in Booklet A, shade the correct ovals on the Optical Answer Sheet (OAS) provided using a 2B pencil.
5. For questions 18 to 26, give your answers in the spaces given in Booklet B.

* This booklet consists of 12 printed pages (including cover page):

Booklet A (34 marks)

For each question from 1 to 17, four options are given. One of them is the correct answer. Make your choice (1, 2, 3 or 4) and shade the correct oval (1, 2, 3 or 4) on the Optical Answer Sheet (OAS).

1. Study the table below carefully.

Group A	Group B
Tree	Television
Tiger	Coins
Y	Z

What are Y and Z likely to be?

	Y	Z
(1)	Mushroom	Paper
(2)	Eraser	Stone
(3)	Butterfly	Ant
(4)	Belt	Dog

2. Four children found a car. The remote control can be used to move the car.



car



remote control

They made the following statements.

Ayden: The car is a living thing because it responds to changes

Barry: The car is a non-living thing because it needs battery to move.

Cathy: The car is a living thing because it is able to move from place to place,

Dylan: The car is a non-living thing because it does not need air, food and water.

Who has/have made the correct statement(s)?

(1) Ayden only

(2) Cathy only

(3) Barry and Dylan only

(4) Barry and Cathy only

3. Ting Ting put two fish in a tank. She observed and recorded the number of fish in the tank from Day 1 to Day 50 in a table below.

	Number of Fish
Day 1	2
Day 10	6
Day 30	12
Day 50	25

From the data collected, what can she say about the characteristic of living things?

- (1) Living things reproduce.
- (2) Living things move by themselves.
- (3) Living things respond to changes around them.
- (4) Living things need air, food and water to stay alive.

4. Which of the following characteristics are similar between animals and plants?

- A: Both grow.
- B: Both reproduce.
- C: Both need air and water.
- D: Both make their own food.

- (1) A and C only
- (2) B and D only
- (3) A, B and C only
- (4) A, C and D only

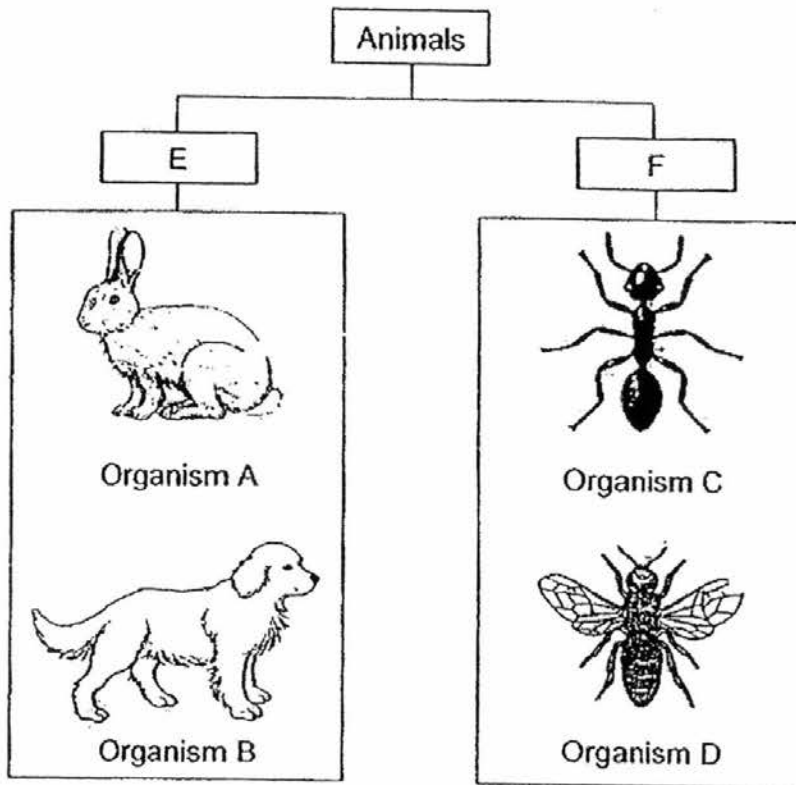
5. Ali observed an organism and wrote down the following statements.

- A: It lays eggs
- B: It has a beak.
- C: It has feathers.
- D: It has two legs.

Which of the following statements helped him to identify that the organism is a bird?

- (1) A and B only
- (2) A and C only
- (3) B and C only
- (4) C and D only

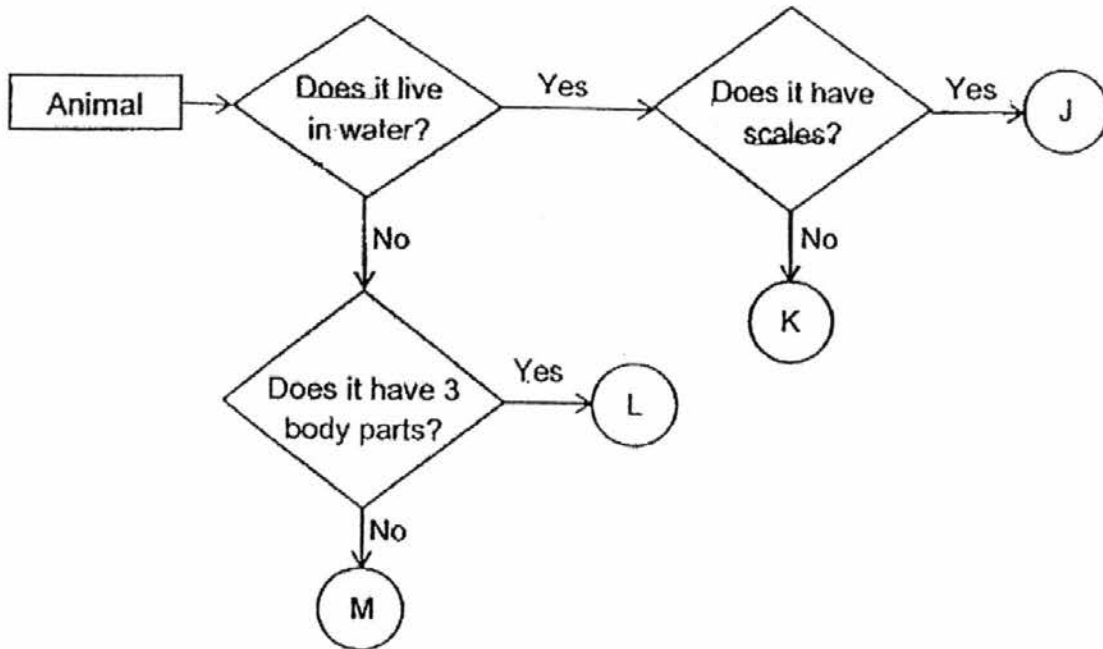
6. Study the classification chart below.



Which one of the following set of headings best represents E and F?

	E	F
(1)	Has feelers	Does not have feelers
(2)	Has six legs	Does not have six legs
(3)	Does not have wings	Has wings
(4)	Does not have three body parts	Has three body parts

Study the flow chart below carefully and answer questions 7 and 8.

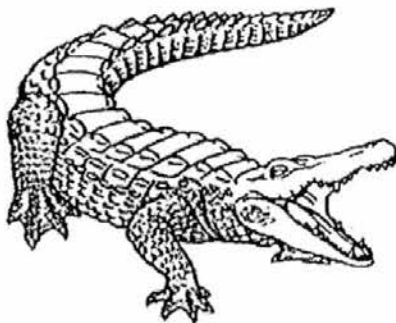


7. Which of the following statement(s) is/are the characteristic(s) of animal L?

- A: It has scales.
- B: It has 3 body parts.
- C: It does not live in water

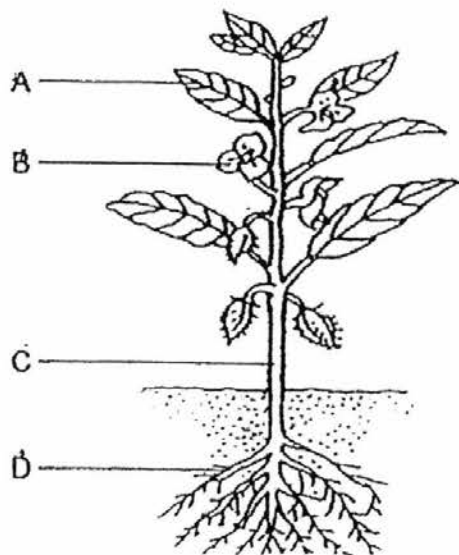
- (1) A only
- (2) B only
- (3) B and C only
- (4) A, B and C

8. Which letter, J, K, L or M, best represents the animal shown below?



- (1) J
- (2) K
- (3) L
- (4) M

9. The diagram below shows a plant.



10. Which one of the following correctly represents the parts marked A, B, C and D?

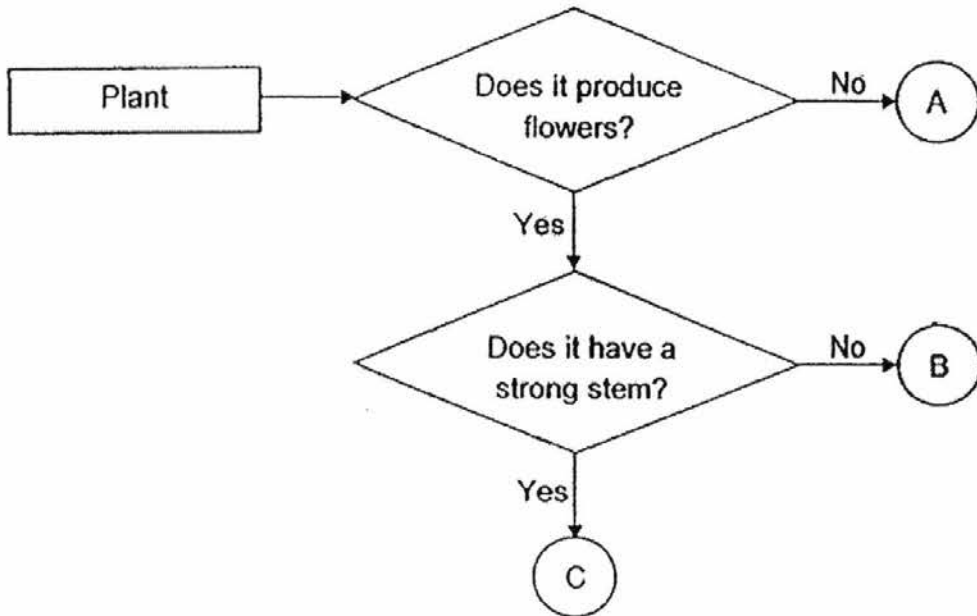
	A	B	C	D
(1)	Flower	Leaf	Root	Stem
(2)	Leaf	Flower	Stem	Root
(3)	Root	Stem	Flower	Leaf
(4)	Leaf	Fruit	Stem	Root


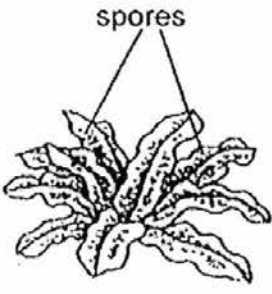
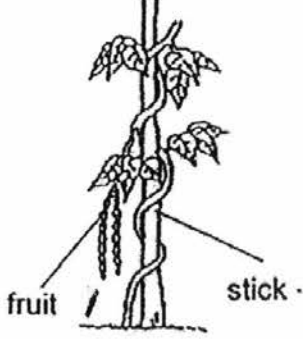
Plants and ferns have common characteristics. Which of the following are the common characteristics?

- W: They reproduce from seeds
 X: They can make their own food.
 Y: They can move from place to place
 Z: They need air, food and water to survive.

- (1) W and X only (2) X and Y only
 (3) X and Z only (4) Y and Z only

11. Study the flow chart below.



Plant W	Plant X	Plant Y
		

Which of the plants above can be classified as A, B and C in the flow chart?

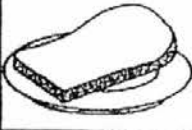


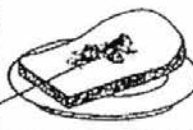
	A	B	C
(1)	Plant W	Plant X	Plant Y
(2)	Plant X	Plant Y	Plant W
(3)	Plant Y	Plant W	Plant X
(4)	Plant Y	Plant X	Plant W

12. Mary saw a living thing in her garden. She described the characteristics of the living thing as shown below.

It lives on land.
It does not bear flowers.
It reproduces from spores.
It cannot make its own food.

Which one of the following groups of living things does it most likely belong to?

- (1) Plants
(2) Animals
(3) Fungi
(4) Micro-organisms
13. Tom took four slices of bread from the same loaf. He added different amount of water on the four slices of bread, Bread A, Bread B, Bread C and Bread D. He kept them in a dark room. The results are as shown in the pictures below.

	Bread A	Bread B	Bread C	Bread D
Number of droplets of water added to the bread	0	10	5	15
Bread mould on bread (if any)				

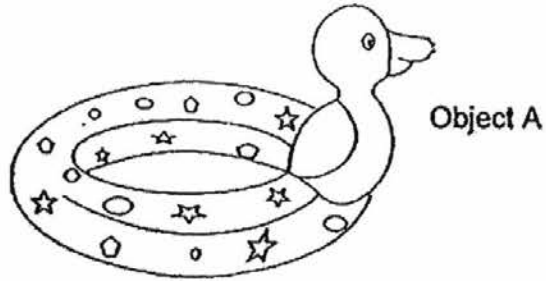
a patch of mould on each slice of bread

Tom made the following statements based on his observations.
Which of the statements below are correct?

- P: Bread mould needs water to grow.
Q: Bread mould grows better in the dark.
R: Bread mould grows better when there is more water.

- (1) P and Q only
(2) P and R only
(3) Q and R only
(4) P, Q and R

14. The picture below shows an object A.



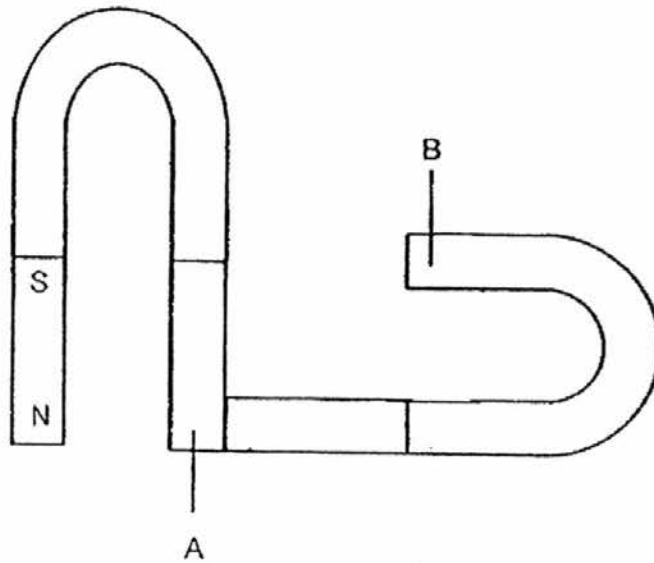
What could be the reasons why object A is usually made of plastic?

- A: It is light.
- B: It is waterproof.
- C: It is transparent.
- D: It is able to float in water

- (1) A and B only
- (3) A, B and C only

- (2) C and D only
- (4) A, B and D only

15. Study the arrangement of the five magnets below. They are attracted to each other.

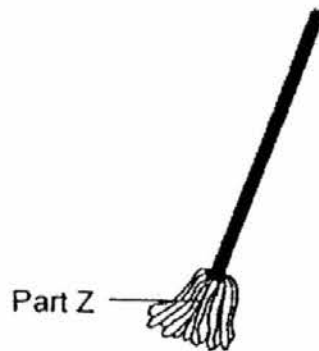


What should the poles at A and B be?

	A	B
(1)	North pole	North pole
(2)	South pole	South pole
(3)	South pole	North pole
(4)	North pole	South pole

16. The classification table shows the properties of four materials, E, F, G and H.

Properties of material	Material			
	E	F	G	H
Is it flexible?	No	No	Yes	Yes
Is it able to absorb water?	Yes	No	Yes	No
Does it break easily when dropped?	No	Yes	No	No



Based on the table above, which material is most suitable for making part Z of the mop shown above?

- (1) E
- (3) G

- (2) F
- (4) H

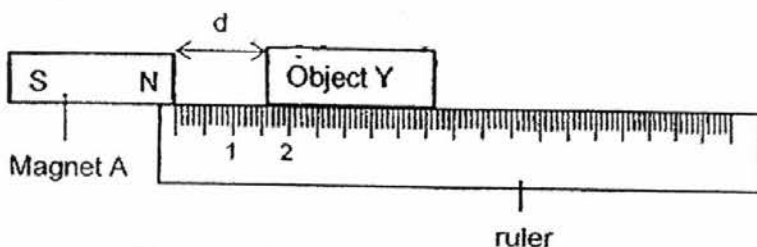
17. Siti placed magnet A and object Y at both ends of a ruler as shown in diagram 1.

Diagram 1



She then moved object Y towards magnet A and measured the distance, d , at which object Y is attracted as shown in diagram 2.

Diagram 2



She repeated the experiment using Magnets B, C and D. Then she recorded the results in the table below.

Magnet	Distance between magnet and object Y d (in cm)
A	1
B	4
C	3
D	2

Based on the results above, which of the following correctly shows the magnet with the strongest magnetic attraction to the magnet with the weakest magnetic attraction.

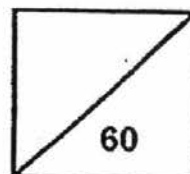
	strongest magnetic attraction			weakest magnetic attraction
		→		
(1)	A	B	C	D
(2)	B	C	D	A
(3)	C	D	A	B
(4)	D	A	B	C

End of Booklet A



Rosyth School
Semestral Examination 1 for 2016
SCIENCE
Primary 3

Total
Marks:



Name: _____

Class: Pr 3 _____ Register No. _____ Duration: 1 h 30 min

Date: 11 May 2016 Parent's Signature: _____

BOOKLET B

Instructions to Pupils:

1. For questions 18 to 26, give your answers in the spaces given in this Booklet B.

	Maximum	Marks Obtained
Booklet A	34 marks	
Booklet B	26 marks	
Total	60 marks	

* This booklet consists of 8 printed pages (including cover page).

Booklet B (26 marks)

For questions 18 to 26, write your answers in this booklet.

18. The table below shows the height of a child over a period of 5 years.

Year	Height (cm)
1	74
2	85
3	94
4	100
5	107

- (a) From the table above, what do you observe about the height of the child from the Year 1 to Year 5? (1m)

- (b) What is the characteristic of living things observed in part (a)? (1m)

19. Norlin found three things, Q, R and S in her house. She observed them for a month and stated their characteristics as shown in the table below.

Characteristics	Q	R	S
• Able to grow	No	Yes	Yes
• Able to make its own food	No	Yes	No
• Able to respond to changes	No	Yes	Yes
• Able to move from place to place	No	No	Yes

- (a) Based on the table, match the items given below with the letter Q, R or S. (2m)
- (i) Water Bottle: (ii) Cat:
- (b) Which three things, Q, R or S is definitely a plant? Explain why. (1m)

20. Yiting saw an Animal W as shown below.



Animal W

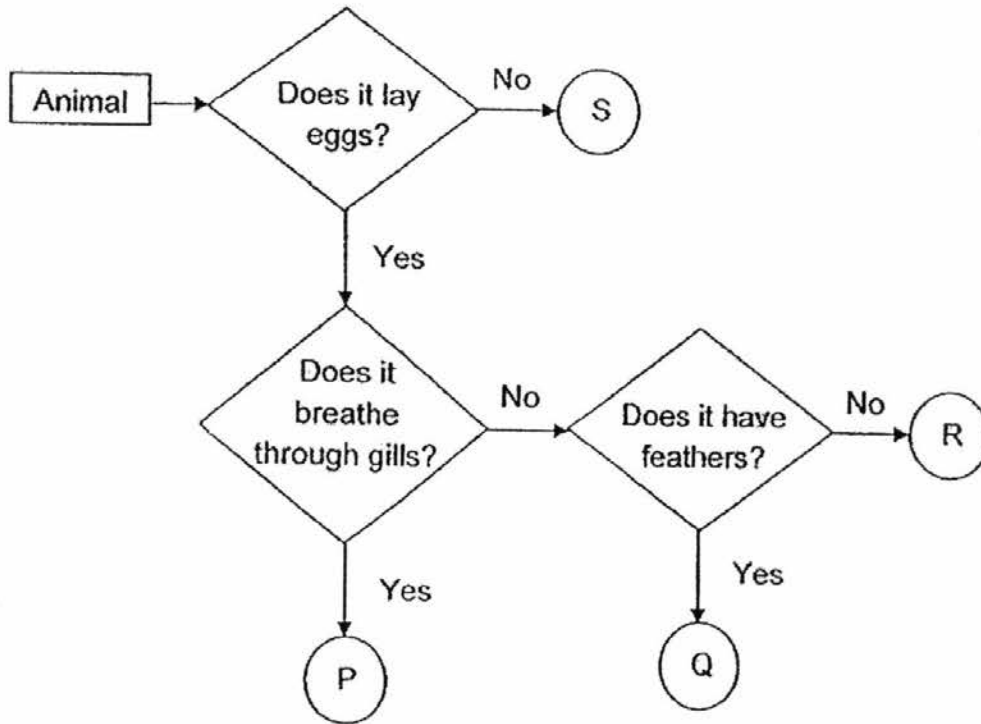
- (a) Which group of animals would she most likely classify animal W under? (1m)

- (b) State two characteristics of the group of animal that you have stated in (a). (2m)

(i)

(ii)

21. Study the flow chart below.



(a) State a similarity between animals, R and Q. (1m)

(b) State a difference between animals, P and Q. (1m)

(c) Which group of animals do P and S belong to? Fill in the boxes with 'Mammals' or 'Fishes'. (2m)

(i) P:

(ii) S:

22. Fungi and bacteria are organisms.

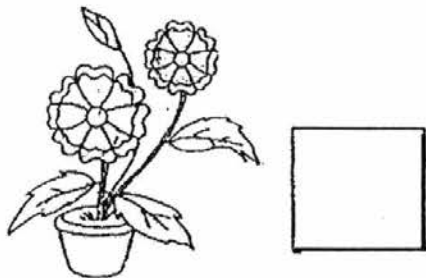
(a) State one similarity between fungi and bacteria. (1m)

(b) Give one example of fungi. (1m)

23. Study the classification table below.

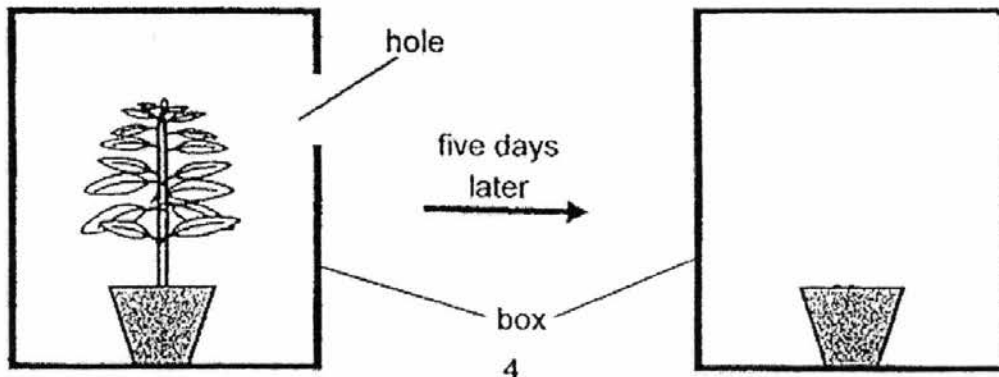
Plant	A	B	C	D
Grows on land?	No	Yes	No	Yes
Bears flowers?	Yes	No	No	Yes

(a) Based on the classification table, which of the letter, A, B, C or D, best represents the plant shown below? Write A, B, C or D in the box provided. (1m)

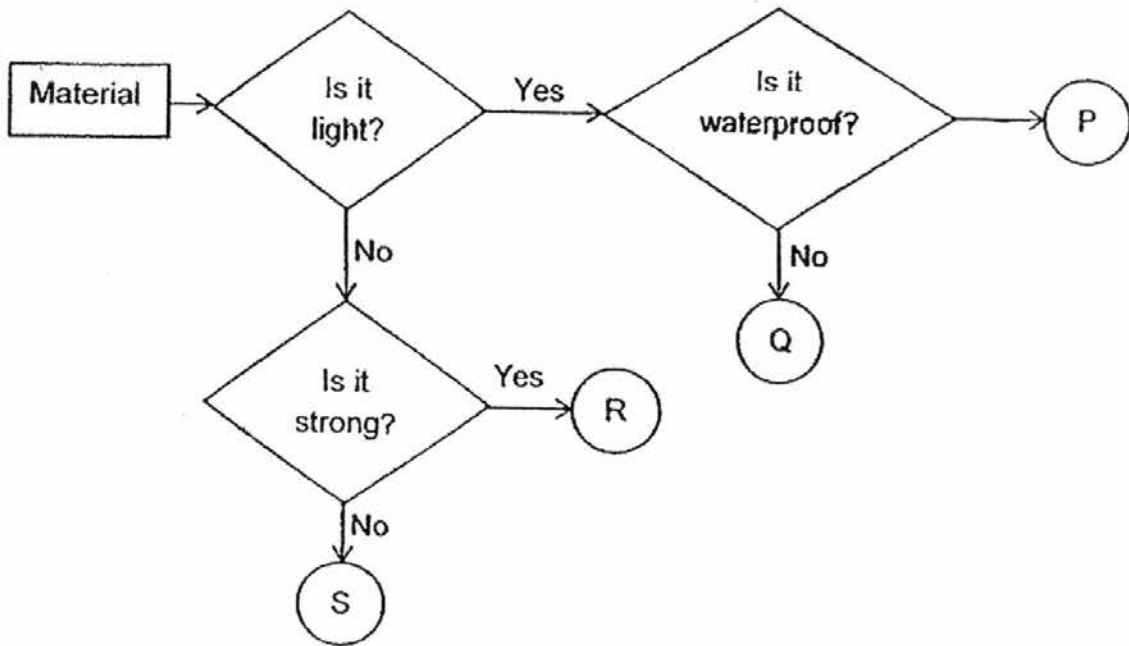


(b) Andrew put a plant in a box with a hole as shown below to find out if the plant responds to light. He placed the box in an open area and watered the plant daily.

Draw the plant in the space provided to show what Andrew would observe five days later. (1m)



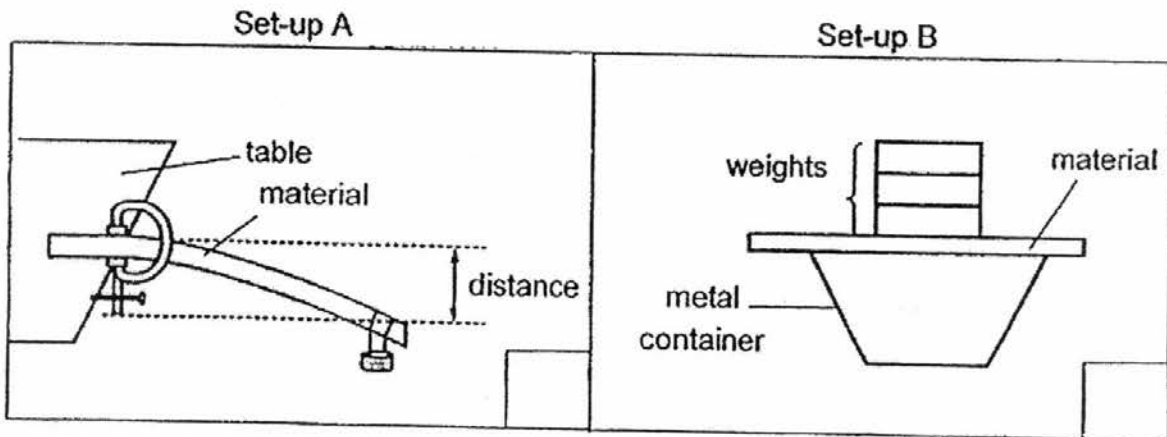
24. Study the flow chart below carefully.



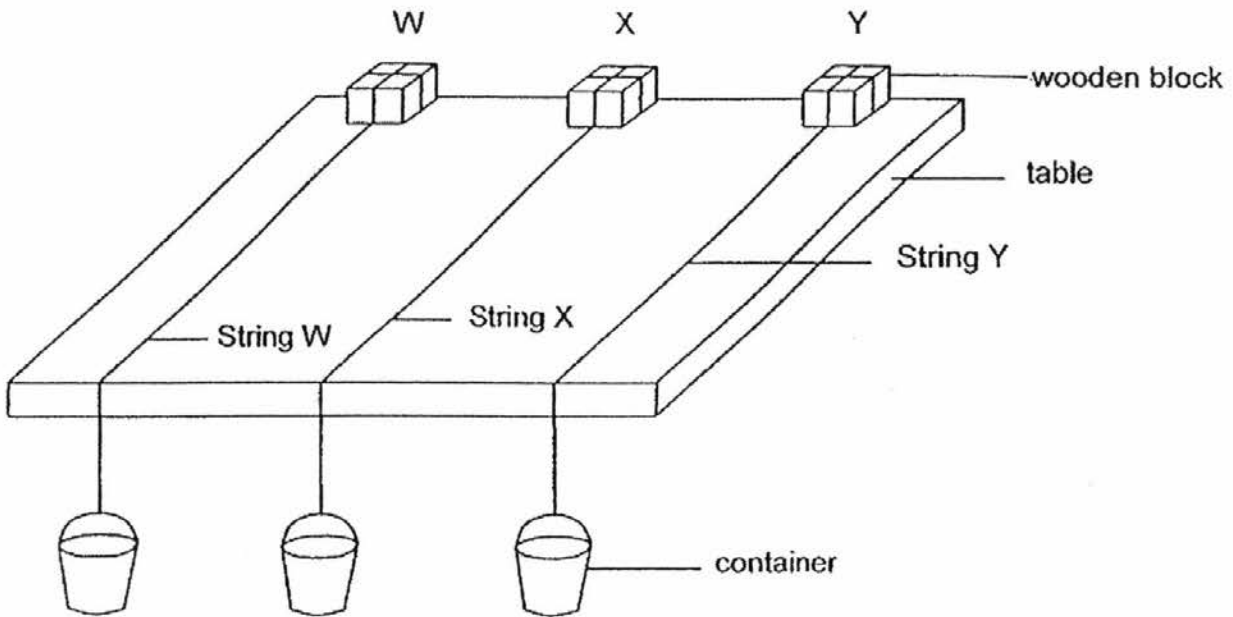
(a) Which material, P or Q, would you use to make a toy boat? Explain why. (2m)

(b) Ahmad was given some material. Which one of the set-up below should he use to find out if the material is strong?

Pick a tick (✓) in Set-up A or Set-up B below to indicate your choice. (1m)



25. Terence set up an experiment to find out which was the best material for carrying heavy objects. He took an equal length of three different strings, W, X and Y. He tied them to three identical wooden blocks on a table and hung three identical containers at the end of the string as shown below.



He dropped some marbles, one at a time into each container until the string broke. The table below shows the number of marbles in each container just before the string broke.

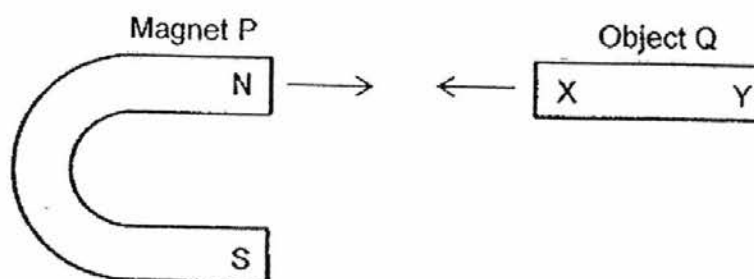
String	Number of marbles in the container before the string broke
W	67
X	96
Y	75

- (a) Arrange the materials W, X and Y, according to their strength starting from the weakest to the strongest. (1m)

weakest

- (b) Which material, W, X or Y, is most suitable to be used as the string to fly a kite? Explain why? (2m)

26. The diagram below shows a U-shaped magnet and an object Q.



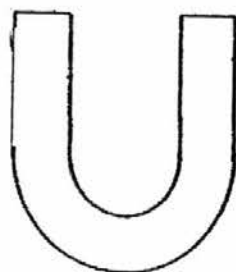
Side X is attracted to the north pole of the magnet but side Y will repel the north pole of the magnet.

- (a) Study the following statements and put a tick (✓) in the correct box. (2m)

	Statements	True	False
(i)	Object Q is made of non-magnetic material.		
(ii)	The south pole of the magnet will attract side Y of object Q.		

- (b) Explain your answer for statement (ii) above. (1m)

- (c) Circle the part(s) of the U-shaped magnet below that can attract the most iron nails. (1m)



End of Booklet B

EXAM PAPER 2016 (P3)

SCHOOL : ROSYTH

SUBJECT : SCIENCE

TERM : SA1

Q1	Q2	Q3	Q4	Q5	Q6	Q7	Q8	Q9	Q10
1	3	1	3	3	4	3	1	2	3
Q11	Q12	Q13	Q14	Q15	Q16	Q17			
2	3	2	4	2	3	2			

18)a)The child grew taller each year but the amount it grew became smaller until the 4 year.

b)Living things grow.

19)a)i)Q ii)S

b)R it is able to make its own food , a plant can make its own food.

20)a)Amphibians.

b)i)Amphibians live on land and in water.

ii)Amphibians have moist skin.

21)a)Both R and Q lay eggs.

b)P breathes through while Q does not.

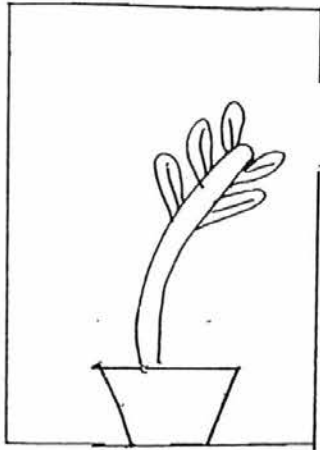
c)i)P: Fishes ii)S: Mammals

22)a)Both do not make their own food.

b)Toadstools.

23)a)D

b)



24)a)P, as it must be waterproof if it not it will sink in the water.

b)Set-up B

25)a)W, Y, X

b)X. It is the strongest as it could hold the most number of marbles before it broke , so that the string will not snap when you fly the kite.

26)a)i)False ii)True

b)Unlike poles attract, so side Y, which is a North Pole, will attract Magnet P's South Pole.

c)

