



Anglo-Chinese School (Primary)

P3 SCIENCE 2007

END-OF-YEAR EXAMINATION

BOOKLET A

Name: _____ () Class: Primary 3 ___

Date: 1 November 2007

Duration of paper: 1h 15 min

Parent's/Guardian's signature

**THIS BOOKLET CONTAINS 13 PAGES.
DO NOT OPEN THIS BOOKLET UNTIL YOU ARE TOLD TO DO SO.
FOLLOW ALL INSTRUCTIONS CAREFULLY.**

PART I

For each of the following questions from 1 to 15, four options are given. One of them is the correct answer. Make your choice (1, 2, 3 or 4) and shade the correct answer on the Optical Answer Sheet. [15 x 2 marks]

1. Which of the following are living things?

- A. Moss
- B. Spider
- C. Leather
- D. Mushroom

- (1) A and D only
- (2) B and C only
- (3) A, B and D only
- (4) A, B, C and D

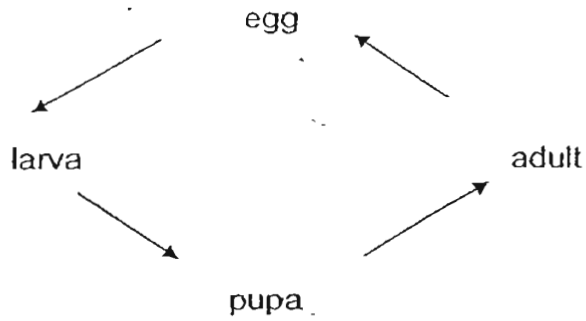
2. The table below gives some information about animals X, Y and Z.

	Animals		
	X	Y	Z
Is it a mammal?	Yes	Yes	No
Does it lay eggs?	No	Yes	Yes

Which of the animals in the table below correctly represents animal X, Y and Z respectively?

	X	Y	Z
(1)	giraffe	dolphin	duck
(2)	goat	spiny anteater	dragonfly
(3)	penguin	platypus	frog
(4)	pig	ostrich	goldfish

3. Which one of the following animals has the life cycle shown below?



- (1) Frog
- (2) Chicken
- (3) Butterfly
- (4) Cockroach

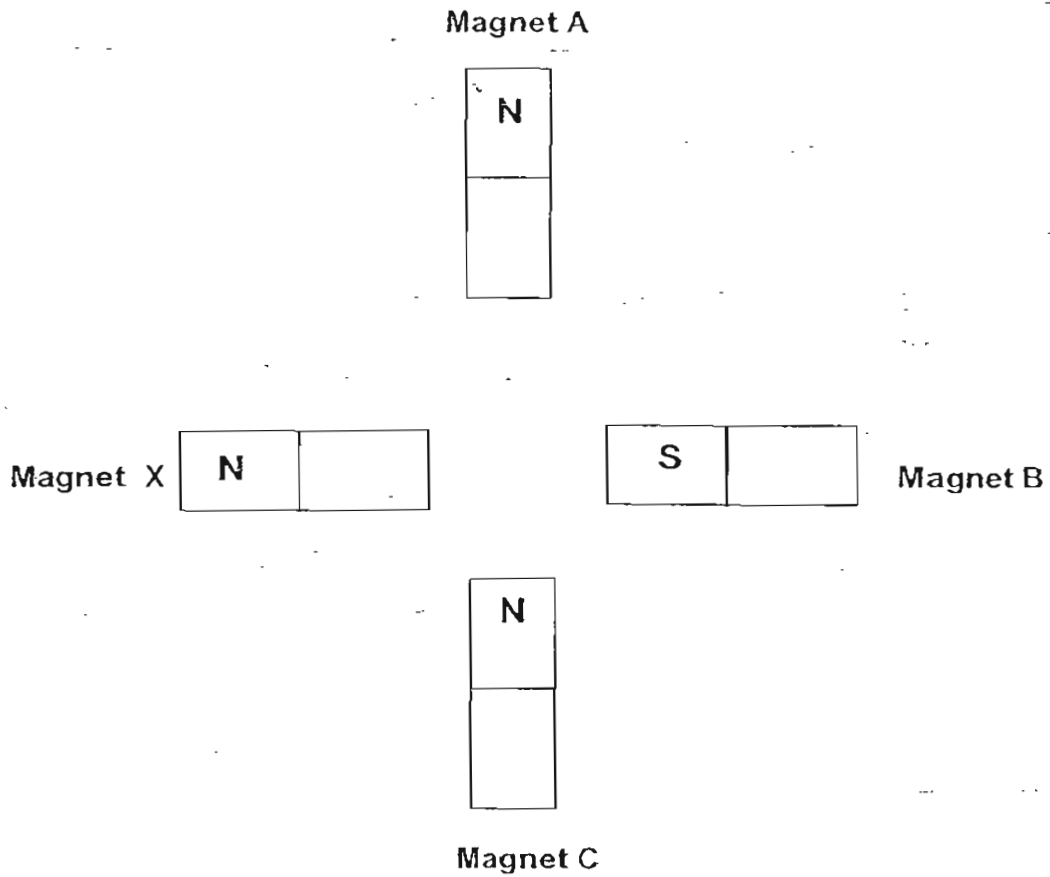
4. The statements below describe the observations made as a string bean plant grows from a seed.

- A. Fruits appear
- B. Roots appear
- C. Shoot appears
- D. Leaves appear
- E. Flowers appear

Which one of the following shows the correct order of growth?

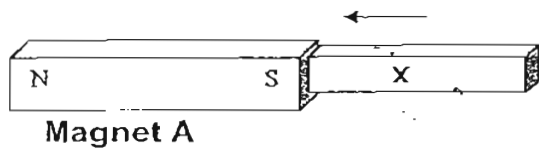
- (1) A → B → E → C → D
- (2) C → B → E → D → A
- (3) D → A → B → C → E
- (4) B → C → D → E → A

5. Four bar magnets are placed in the positions as shown below. Which magnet(s) will be attracted to magnet X?



- (1) Magnet A only
- (2) Magnet C only
- (3) Magnets A and B only
- (4) Magnets B and C only

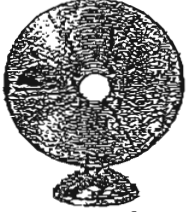
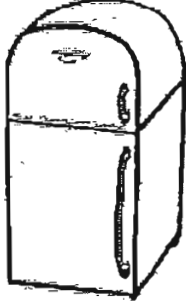
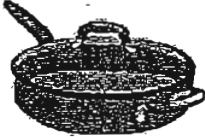

6. The diagram below shows an object 'X' being attracted to magnet A.



Which one of the following materials could object 'X' be made of?

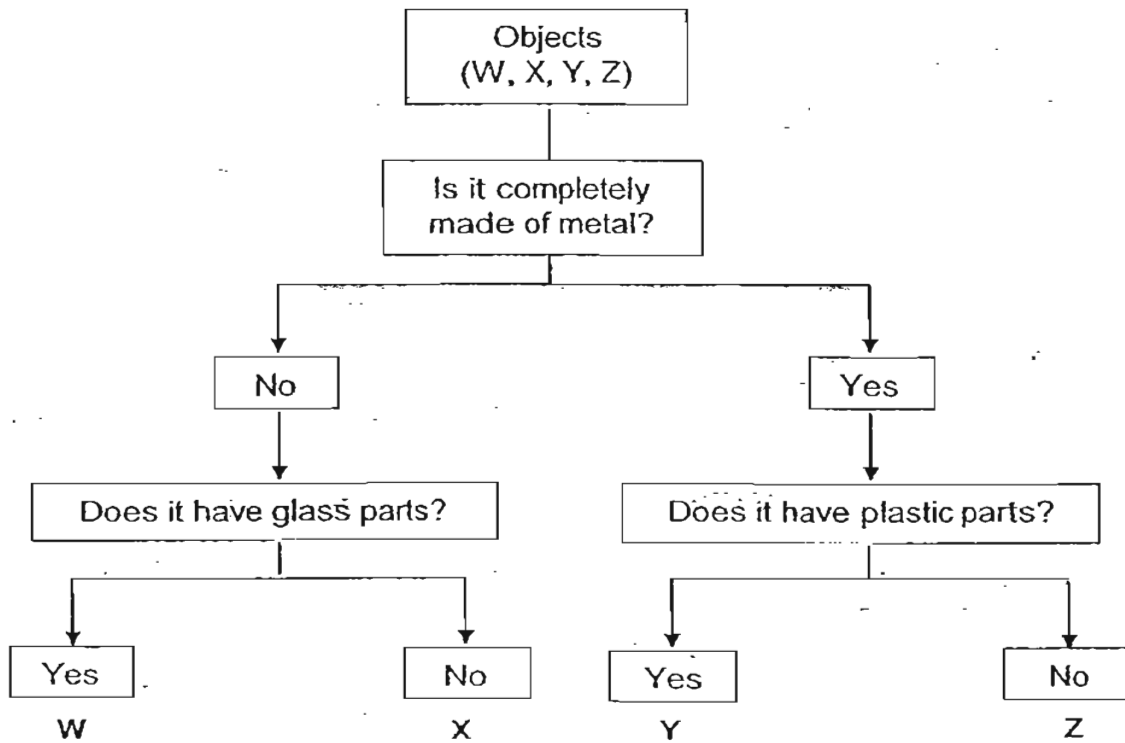
- (1) Iron
- (2) Silver
- (3) Copper
- (4) Aluminum

7. Which of these objects make use of magnets to function properly?

<p>(A)</p>  <p>a fan</p>	<p>(B)</p>  <p>a refrigerator</p>
<p>(C)</p>  <p>a cooking pan</p>	<p>(D)</p>  <p>a computer</p>

- (1) A and C only
- (2) A and D only
- (3) A, B and D only
- (4) A, B, C and D.

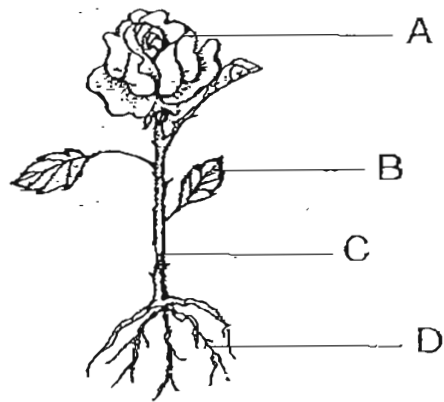
8. The classification chart below shows how a group of 4 objects (W, X, Y and Z) are grouped according to certain characteristics.



Which one of the following most likely represents a car?

- 1) W
- 2) X
- 3) Y
- 4) Z

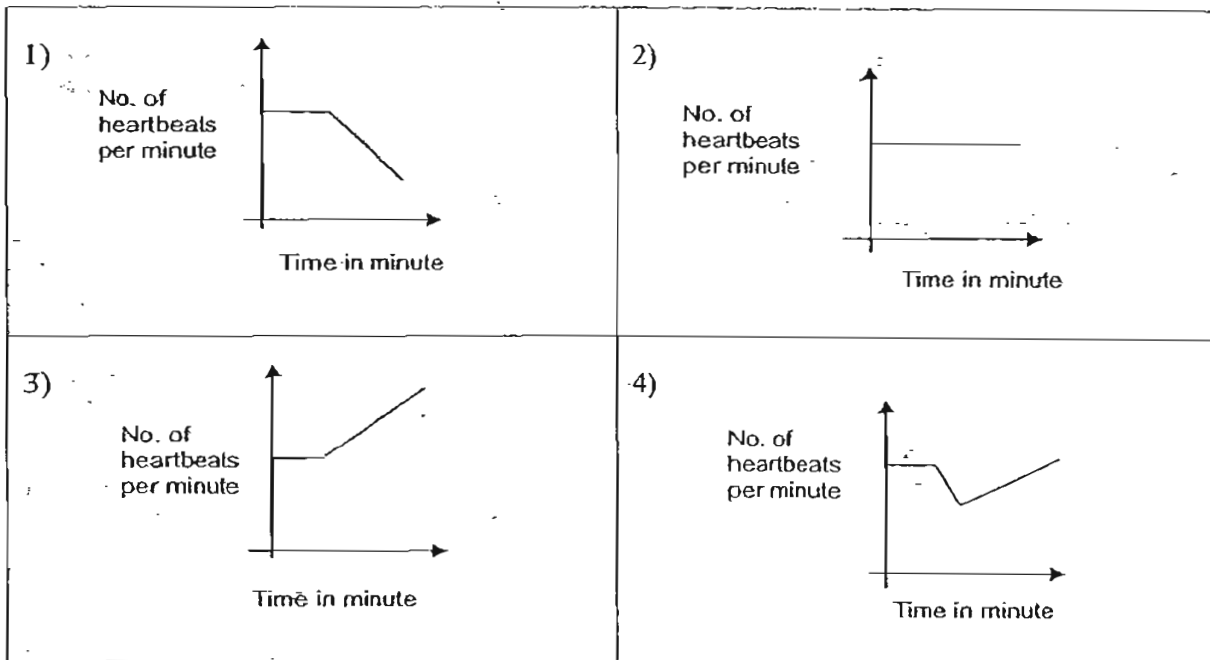
9. The diagram below shows a rose plant.



In which part of the rose plant (A, B, C or D) does photosynthesis take place?

- (1) A
- (2) B
- (3) C
- (4) D

10. In a 100-metre race which Raj took part in, he sped until he crossed the finishing line. Which one of the following graphs below shows the change in his heartbeat during the race?



11. The functions of three body systems (X, Y and Z) are stated below.

System X : Transports food, water, oxygen and waste within the body

System Y : Breaks down food into simpler substances for the body to absorb

System Z : Takes in oxygen and gives out carbon dioxide

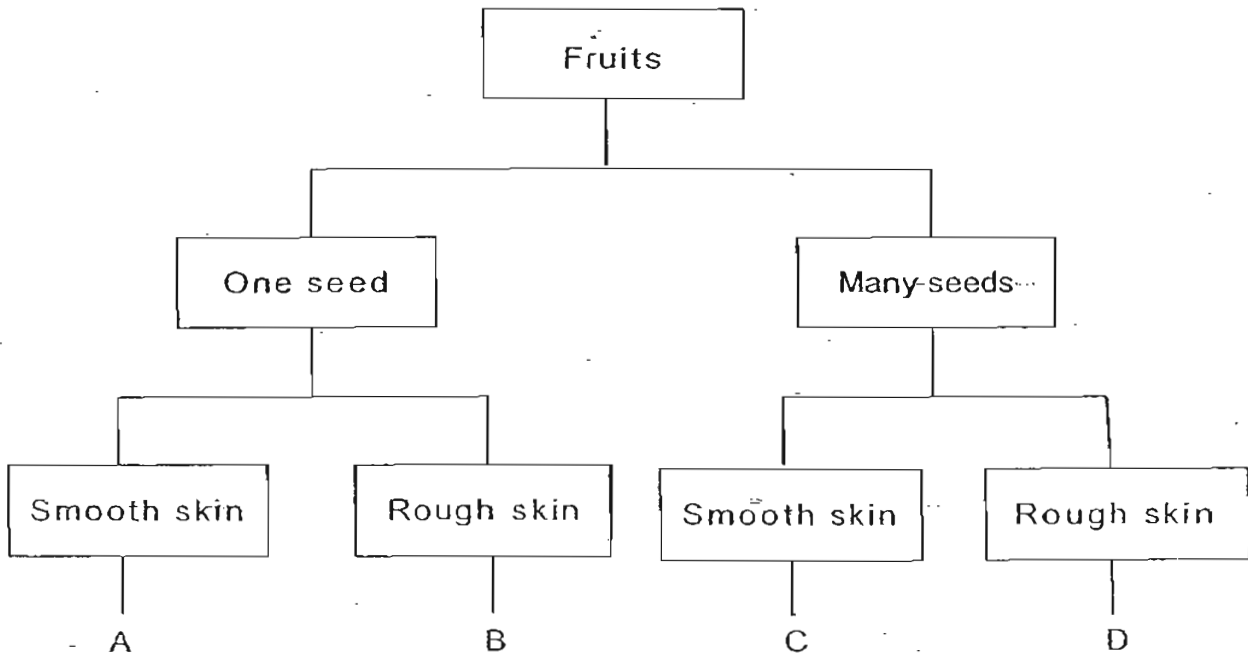
Which one of the following is correct?

	System X	System Y	System Z
1.	Digestive	Respiratory	Blood Circulatory
2.	Blood Circulatory	Digestive	Respiratory
3.	Respiratory	Blood Circulatory	Digestive
4.	Blood Circulatory	Respiratory	Digestive

12. The table below gives some information about two fruits, W and X, based on two characteristics. A tick (✓) indicates the presence of the characteristic in each fruit.

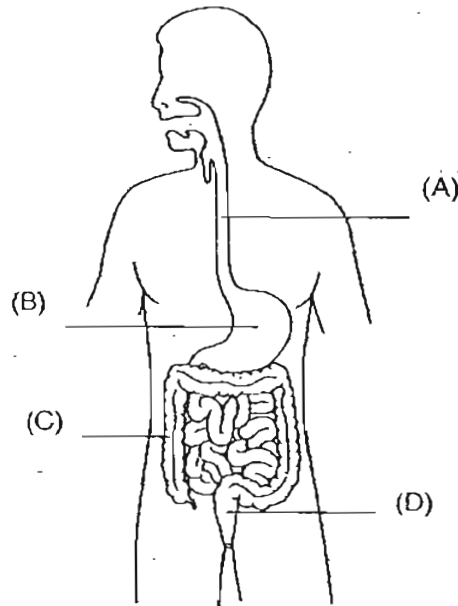
Fruits	W	X
Characteristics		
Many seeds	✓	✓
Smooth skin		✓

Using the information above, which letters (A, B, C or D) correctly represent the fruits W and X respectively in the classification table shown below?



	Fruit W	Fruit X
(1)	B	A
(2)	C	B
(3)	D	C
(4)	A	D

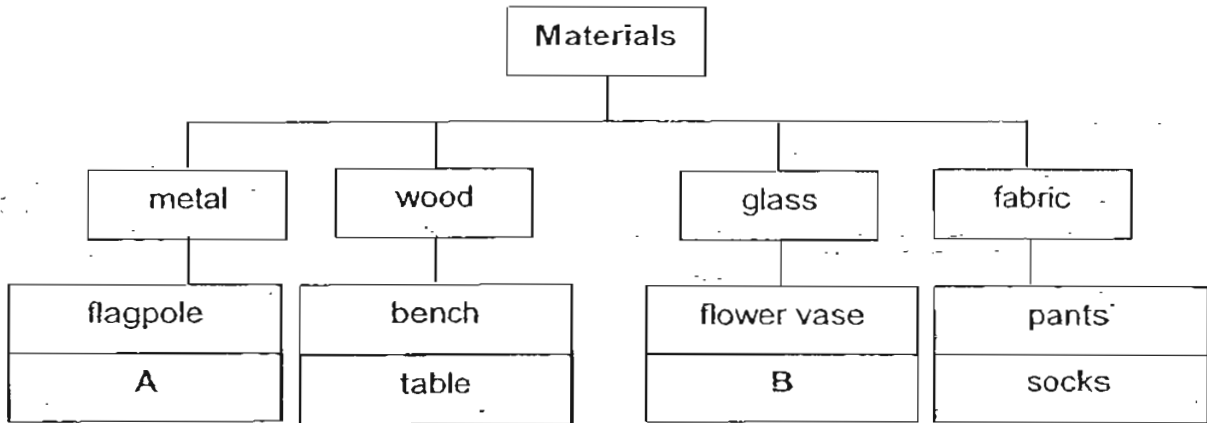
13. Yiwen studied the diagram of the digestive system as shown below. She made a table to list the functions of the parts labelled A, B, C and D.



Which part of the digestive system (A, B, C or D) has an incorrect function listed next to it?

	Parts of the digestive system	Functions
(1)	A	Muscular tube which pushes the food that has been swallowed into the stomach
(2)	B	Stores digested food
(3)	C	Removes water from undigested food
(4)	D	Stores undigested food

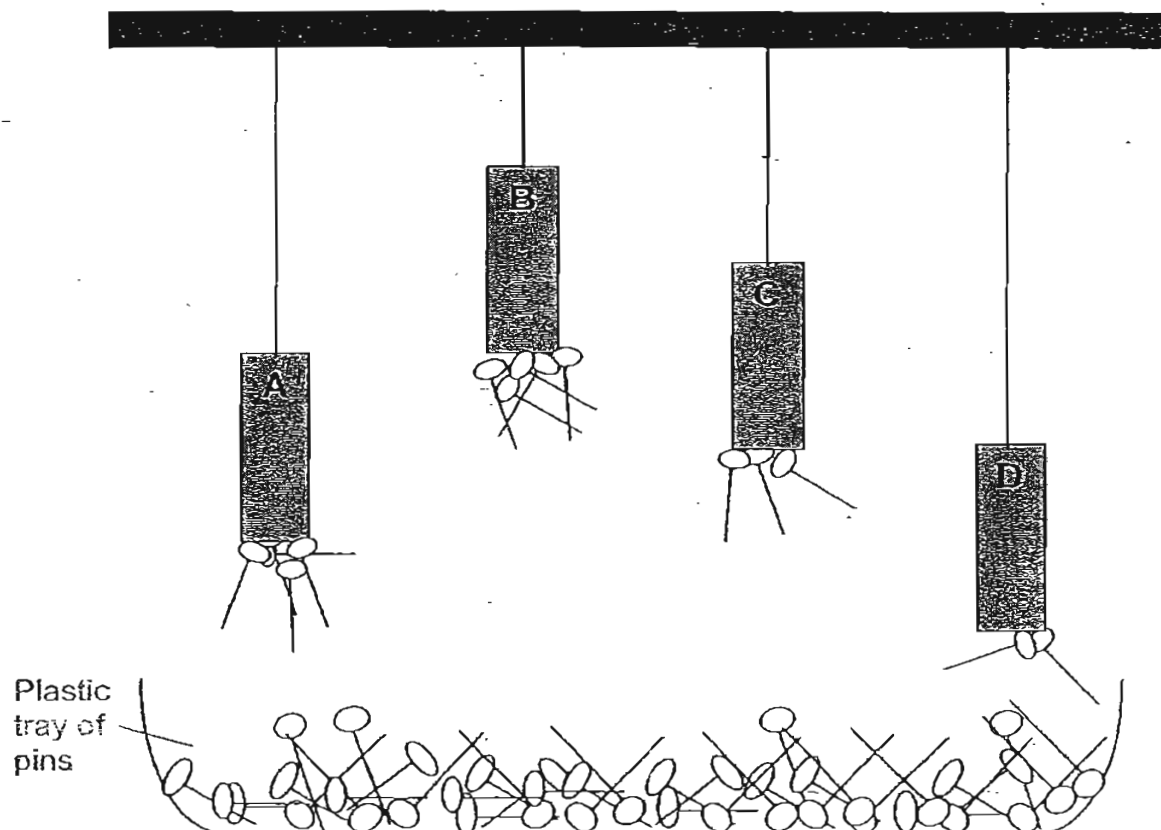
14. Study the classification table below. It shows how some objects have been grouped according to what material it is made up of.



Based on the above classification, what are objects A and B most likely to be?

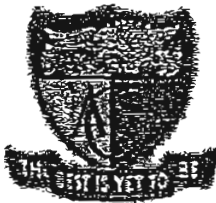
	A	B
1.	cup	eraser
2.	window grille	window pane
3.	chair	shirt
4.	mat	mirror

15. Four similar-sized magnets, A, B, C and D are hung from strings of different lengths as shown below. A plastic tray of iron pins was placed below the magnets and a different number of pins are observed to be attracted to the magnets.



Which magnet is most likely the strongest?

- (1) A
- (2) B
- (3) C
- (4) D



Anglo-Chinese School (Primary)

P3 SCIENCE 2007

END-OF-YEAR EXAMINATION

BOOKLET B

Name: _____ () Class: Primary 3 _____

Date: 1 November 2007

Duration of paper: 1h 15 min

	Maximum Marks	Marks Obtained
Section A / Booklet A	30	
Section B / Booklet B	20	
Total	50	

THIS BOOKLET CONTAINS 9 PAGES.

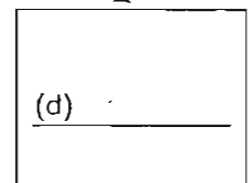
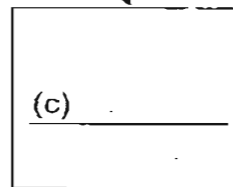
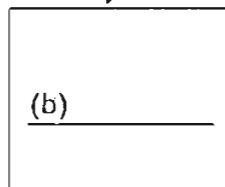
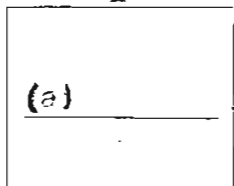
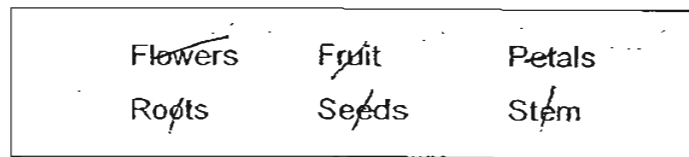
DO NOT OPEN THIS BOOKLET UNTIL YOU ARE TOLD TO DO SO.

FOLLOW ALL INSTRUCTIONS CAREFULLY.

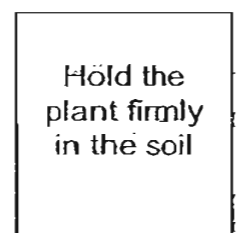
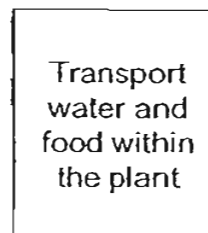
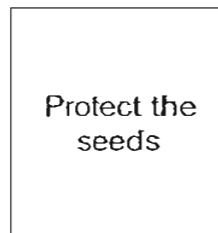
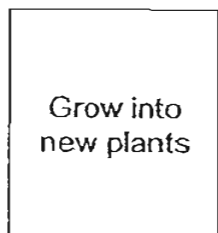
PART II

Read each question carefully and write your answer(s) in the space(s) provided.
(20 marks)

16. Study the classification chart below. Fill in the four blanks (a, b, c, d) using the given helping words. Each word can only be used once. [2]



Functions of the plant part



17. Jack planted 5 similar plants in 5 pots named A, B, C, D and E. The pots contained the same type of soil and he watered each of them with the same amount of water everyday. Each day at 8 am, he put the 5 pots of plants in the same area under the sun for different lengths of time. He did this for 4 weeks. On the 28th day, he measured their heights and recorded his observations in the table below.

	Pot A	Pot B	Pot C	Pot D	Pot E
Number of hours in the sun each day	5	6	7	8	9
Height in cm	5	10	15	15	15

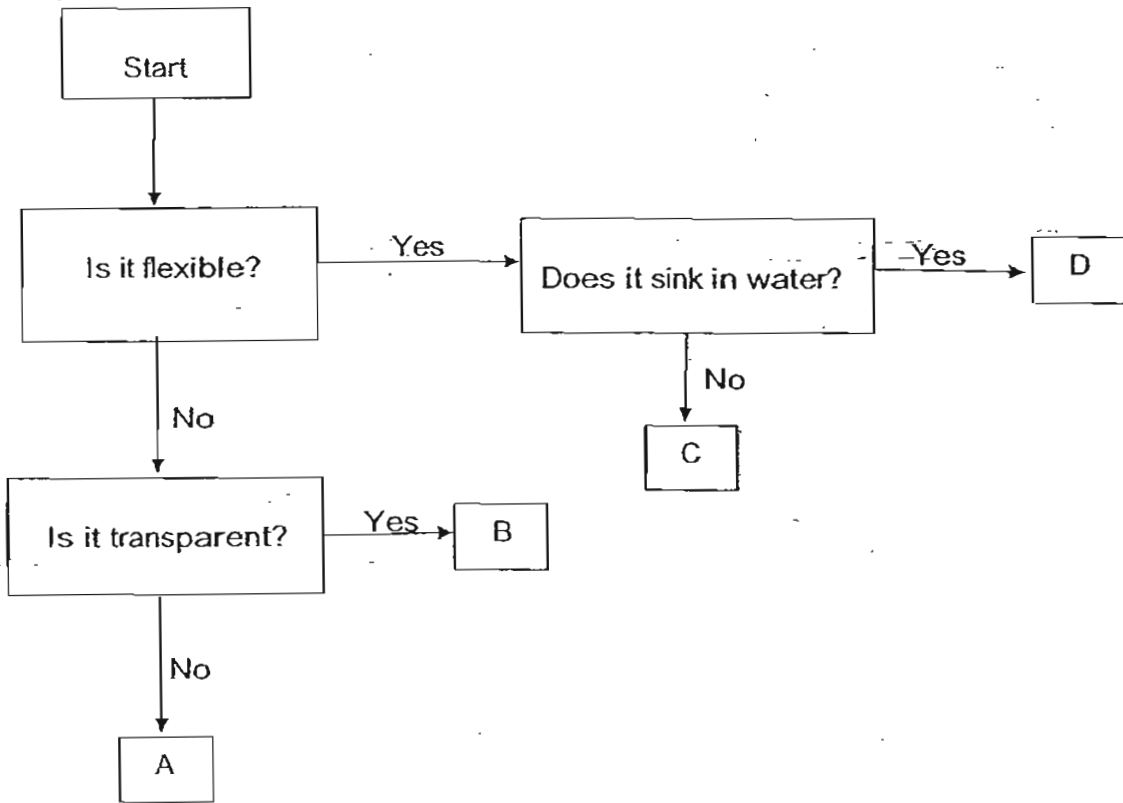
a) From the table above, what is the least number of hours the plants need each day to make sure that it grows to its maximum height?

[1]

b) Why is sunlight important to plants?

[1]

18. Study the flowchart below.



Using the given helping words as shown below, identify the objects A, B, C and D correctly. Each word can only be used once. [2]

Glass rod Brick Eraser Plastic ruler

A	
B	
C	
D	

19. Pete was at the seaside. He observed that it was a hot day so he decided to go for a swim. The water was cold. All of a sudden, he observed that dark clouds had covered the sky. It was time to go home.

Pete had used some of his senses in making the above observations. In the table below, tick () the senses he had used to make the above observations. [2]

Senses	Senses used by Pete
Hearing	
Sight	
Smell	
Taste	
Touch	

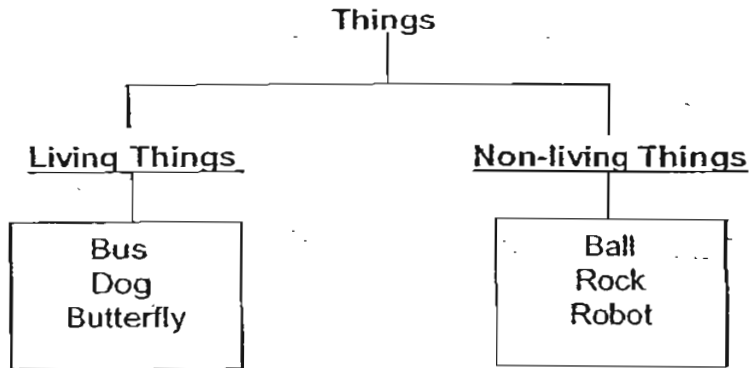
20. A boy was asked to carry out the following 4 activities on 4 different occasions:

- Activity A – Watching a documentary on television
- Activity B – Walking his dog
- Activity C – Sleeping on his bed
- Activity D – Skipping activity using his skipping rope

His breathing rates were measured and recorded in the table below. Based on the information given, indicate the 4 different activities using the letters A, B, C and D in the table below. Each letter can only be used once. [2]

Most Likely Activity	Number of breathes every minute (Breathing rate)
	12
	18
	30
	45

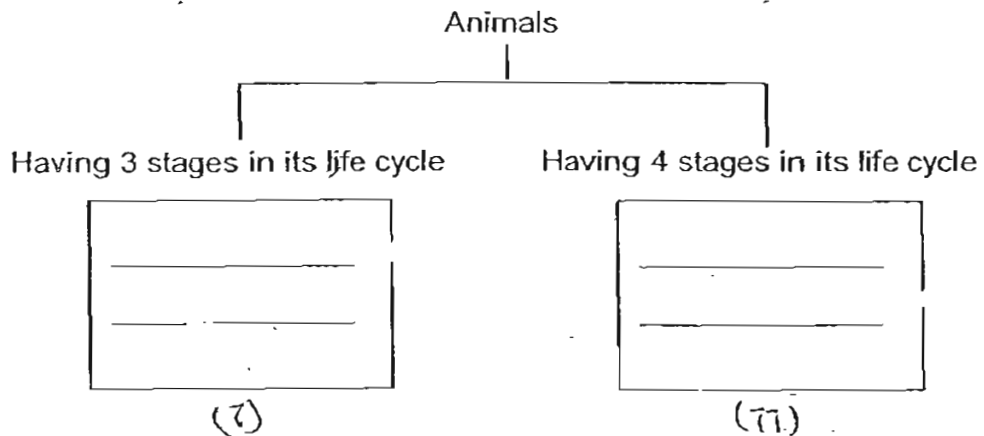
21. Joshua grouped the following things as shown in the classification table below.



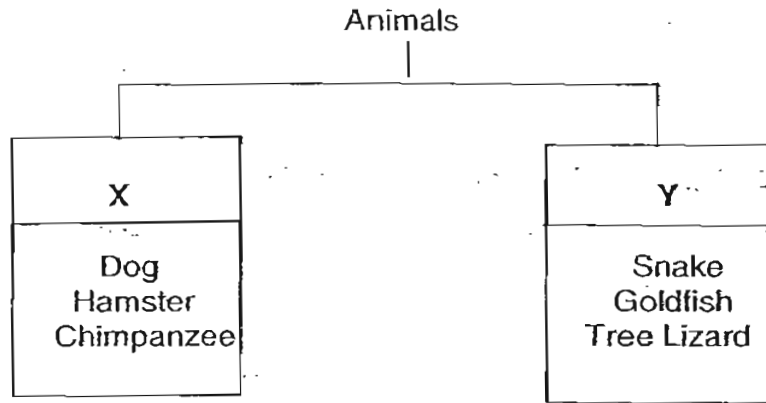
a) Which object was classified wrongly? [1]

b) Give a reason to explain your answer in (a), [1]

22. Classify the following animals into the groups based on their lifecycle. [2]



23. Study the classification table below. It shows how six animals are grouped according to their method of reproduction.



(a) Give a suitable heading for

X: _____

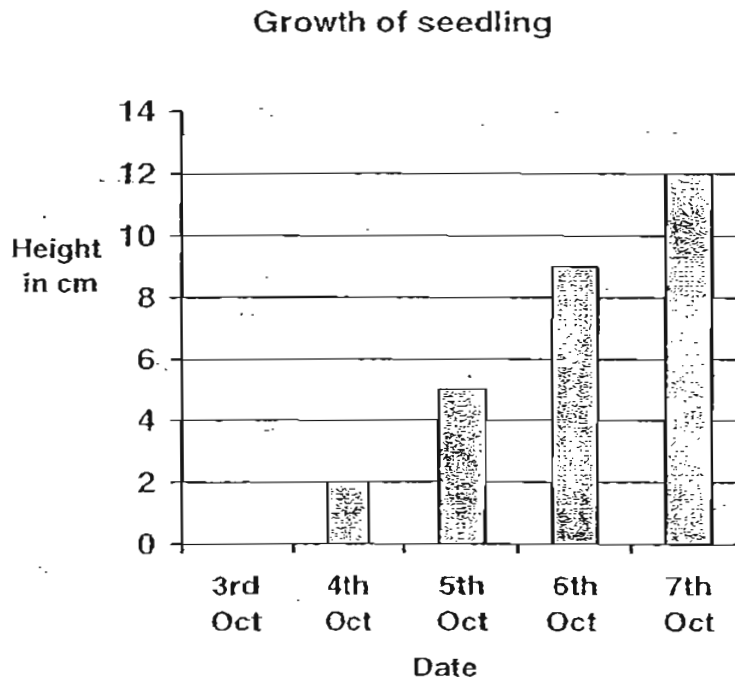
Y: _____

[1]

(b) In which group should a crocodile be classified under?

[1]

24. Benjamin planted a seed on 2nd October. He watered it every day and observed how it grew. He measured the seedling every day and recorded its growth over 5 days as shown in the graph below.



- a) What is the increase in the height of the seedling from 4th to 5th October?

_____ [1]

- b) The greatest growth of the seedling was recorded during the period from

the _____ Oct to _____ Oct.

[1]

25. Look at the picture of a bar magnet shown below.
The bar magnet was placed in a plastic tray of paper clips and was lifted soon after. The number of paper clips attracted to the magnet at the 4 positions were observed and recorded in the table below.



A bar magnet

Position	Number of paper clips attracted
A	8 to 10
B	4 to 6
C	4 to 6
D	?

- (a) What is the most likely number of papers clips attracted at position D? [1]

- (b) What do you call the parts of the magnet with the strongest attraction? [1]

~~~~ End of Paper ~~~~



# ACS Primary School

## Primary 3 Science SA2 Exams (2007)

### *Answer Keys*

#### SECTION A

| Qn no. | Ans |
|--------|-----|
| 1      | 3   |
| 2      | 2   |
| 3      | 3   |
| 4      | 4   |
| 5      | 2   |
| 6      | 1   |
| 7      | 3   |
| 8      | 1   |
| 9      | 2   |
| 10     | 3   |

| Qn no. | Ans |
|--------|-----|
| 11     | 2   |
| 12     | 3   |
| 13     | 2   |
| 14     | 2   |
| 15     | 2   |

#### SECTION B

16a. Seeds

16b. Fruit

16c. Stem

16d. roots

17a. 7 hours

17b. The chlorophyll of the plants trap sunlight to make food, without sunlight the plants cannot make food and it will die.

18. A: Brick  
B: Glass rod  
C: Plastic ruler  
D: Eraser

19. Sight  
Touch

20. Activity C 12  
Activity A 18  
Activity B 30  
Activity D 45

21a. Bus.

21b. The bus does not move by itself and living things move by itself so the bus is not a living thing.

22. (i) Frog, cockroach  
(ii) Moth, Mosquito

23a. X : give birth to young alive.  
Y : lay eggs

23b. Group Y

24a. 3 cm

24b. 5, 6

25a. 8 to 10 paper clips.

25b. poles