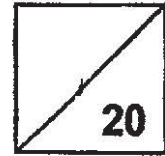


Red Swastika School
2019 P3 Science Topical Quiz 3
Your amazing body as a system
Plants and their parts



Name: _____ ()

Parent's Signature: _____

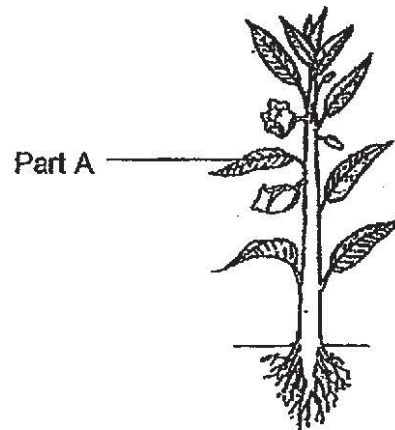
Class : P3 _____

Date: _____

Section A: Multiple-Choice Questions (7 x 2 = 14 marks)

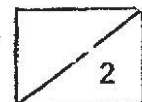
Choose the most suitable answer and write its number in the brackets provided.

1. The diagram below shows a plant.

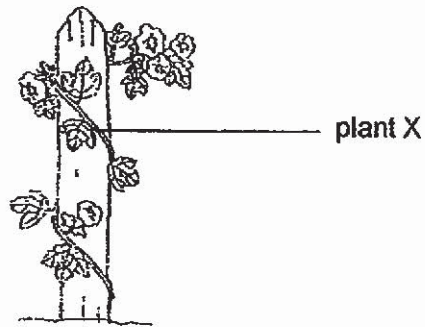


Which of the following statements about Part A is true?

- (1) It helps the plant to stay upright.
- (2) It helps the plant to absorb water.
- (3) It helps the plant to make food.
- (4) It contains seeds that allow the plant to reproduce.

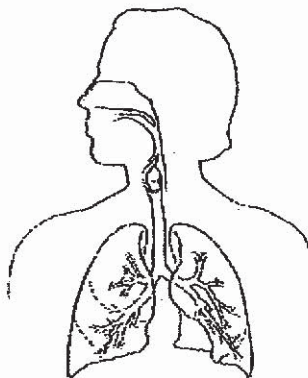


2. Kamal noticed plant X growing around a fence in his school's science garden.



Which of the following is most likely not true of plant X?

- (1) It has a weak stem.
 - (2) It absorbs water from the fence.
 - (3) It needs a support to grow upwards.
 - (4) It grows upwards so that it can get more sunlight.
3. Which organ system is shown below?

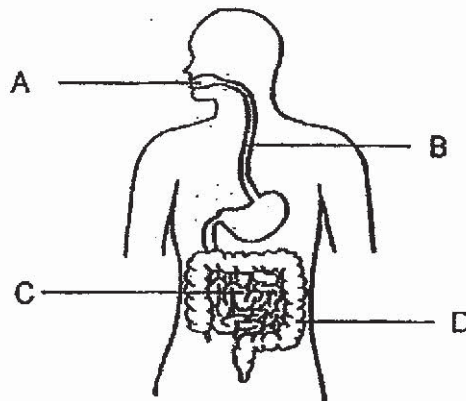


- (1) Respiratory system
- (2) Digestive system
- (3) Circulatory system
- (4) Muscular system

4. Which of the following systems is correctly matched to its function?

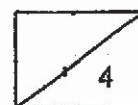
	System	Function
(1)	Skeletal system	It protects some of our organs.
(2)	Muscular system	It gives our body shape.
(3)	Digestive system	It carries useful substances to all parts of our body.
(4)	Respiratory system	It breaks down food into simple substances.

5. Study the human digestive system below.

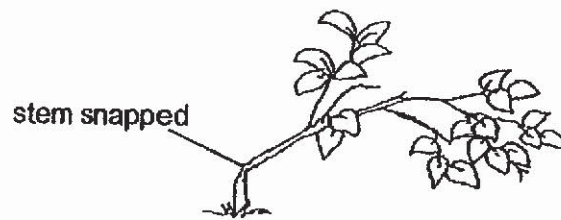


Which two parts, A, B, C or D, have digestive juices added?

- (1) A and B
- (2) A and C
- (3) B and C
- (4) B and D

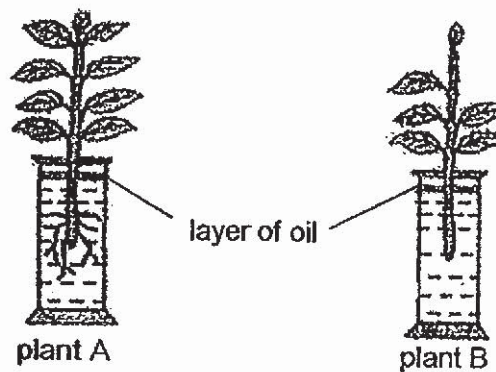


6. A young plant's stem was snapped during a thunderstorm.



The plant died a few days later. Which of the following could be the explanation?

- (1) The stem was unable to support the plant.
 - (2) The plant was unable to take in and give out air.
 - (3) The plant was unable to trap sunlight to make food.
 - (4) The plant was unable to receive water from the roots.
7. Adam wanted to find out if plants take in water through their roots. He set up the experiment as shown below.

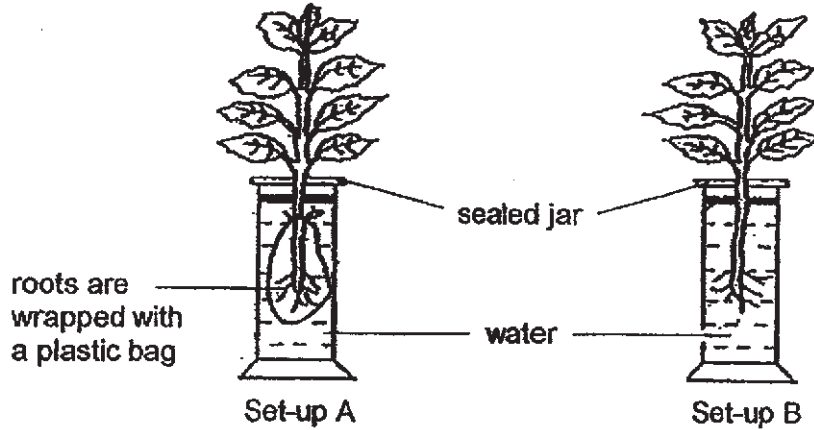


His teacher said that his experiment was not a fair one. What change should Adam make to ensure his experiment was fair?

- (1) Add more water to plant B.
- (2) Remove all the leaves for plant A.
- (3) Remove the layer of oil for plant B.
- (4) Make sure both plants have the same number of leaves.

Section B: Open-ended Questions (2 Questions – 6 marks)

8. Peter conducted an experiment using set-ups A and B as shown below. He made sure that both set-ups had the same amount of water and left them in an open field for five days.



Peter recorded his observations in the table below.

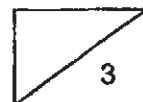
Set-up	Volume of water at the start (ml)	Volume of water after five days (ml)
A	150	?
B	150	100

- a) What will the volume of water in Set-up A be after five days? (1m)

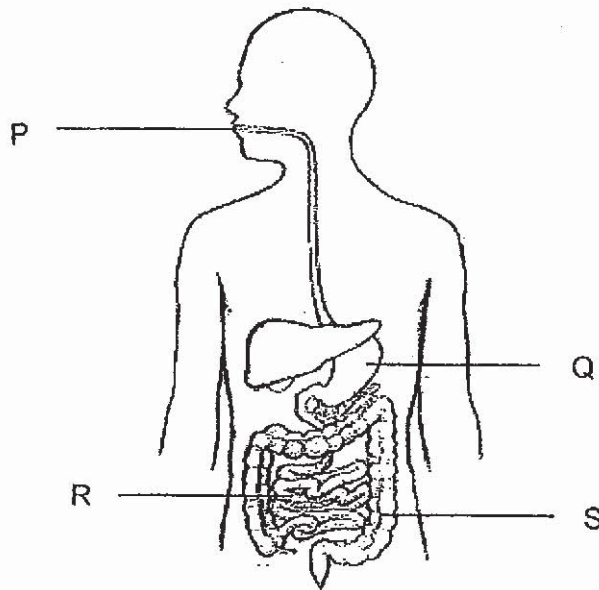
_____ ml

- b) Give a reason for your answer. (1m)

- c) How do the roots in soil help prevent plants from falling over during a thunderstorm? (1m)



9. The diagram below shows a human digestive system.

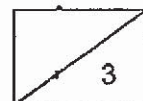


a) Tick the correct boxes (True or False) for the statements below. (2m)

Statement	True	False
Digestion begins in part P.	<input type="checkbox"/>	<input type="checkbox"/>
Digested food passes through the walls of part Q and into the blood.	<input type="checkbox"/>	<input type="checkbox"/>
Digestion is completed in part R.	<input type="checkbox"/>	<input type="checkbox"/>
Water is absorbed from the undigested food in part S.	<input type="checkbox"/>	<input type="checkbox"/>

b) Which organ system will work together with the digestive system to carry digested food to all parts of the body? (1m)

END OF PAPER
 ☹️ PLEASE CHECK YOUR WORK. ☹️



SCHOOL : RED SWASTIKA PRIMARY SCHOOL

LEVEL : PRIMARY 3

SUBJECT : SCIENCE

TERM : 2019 CA2

SECTION A

Q 1	Q2	Q3	Q4	Q5	Q6	Q7
3	2	1	1	2	4	4

SECTION B

Q8)	a)150 ml b)Its because the roots are not able to absorb water with a plastic wrapped around the roots. c)Roots hold the plant firmly to the ground.								
Q9)	a) <table border="1" data-bbox="504 1272 916 1489"><tr><td>True</td><td></td></tr><tr><td></td><td>False</td></tr><tr><td>True</td><td></td></tr><tr><td>True</td><td></td></tr></table> b)Circulatory system.	True			False	True		True	
True									
	False								
True									
True									