

Catholic High School (Primary)
Primary 3 Science
Weighted Assessment 2

Name: _____ ()

Class: Pri 3 _____

| | |
|-------|----|
| MARKS | 20 |
|-------|----|

Parent's Signature: _____

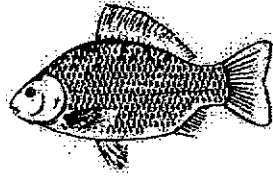
Section A (6 × 2 marks)

For each question from 1 to 6, four options are given. One of them is the correct answer. Make your choice (1, 2, 3 or 4). Write your answer in the brackets provided.

1. Which observation correctly matches the characteristic of living things?

| | Observation | Characteristic |
|-----|--|---|
| (1) | A frog lays eggs. | Living things can grow. |
| (2) | A caterpillar changes into a butterfly. | Living things need air, food and water. |
| (3) | A boy moves his foot away from a sharp object he had stepped on. | Living things can reproduce. |
| (4) | A monkey swings from tree to tree. | Living things can move on its own. |

2. The diagrams below show two animals.



fish



insect

Which is a common characteristic of a fish and an insect?

- (1) Both lay eggs.
- (2) Both have six legs.
- (3) Both live on land only.
- (4) Both have scales on their body.

()

3. The table below shows the characteristics of two groups of animals. A tick (✓) represents that the animal has the characteristic.

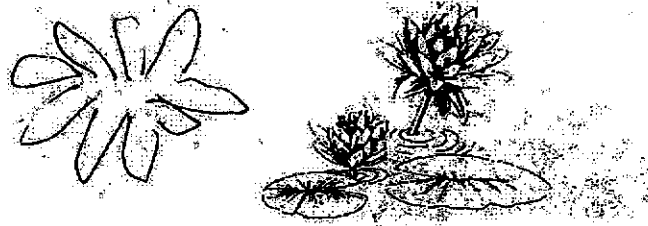
| Characteristics | Group S | Group T |
|---------------------------|---------|---------|
| lives in water only | | ✓ |
| has dry skin | ✓ | |
| reproduces by laying eggs | ✓ | ✓ |
| has scales | ✓ | ✓ |

Which of the following best represents Groups S and T?

| | Group S | Group T |
|-----|-----------|-----------|
| (1) | bat | whale |
| (2) | crocodile | goldfish |
| (3) | whale | crocodile |
| (4) | crocodile | bat |

()

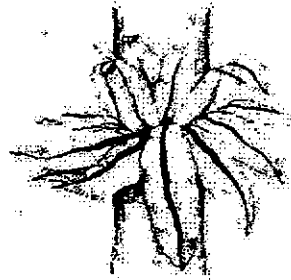
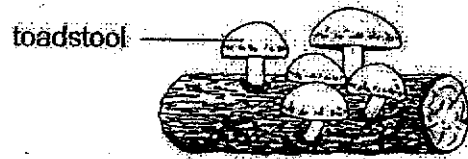
4 The diagram below shows a plant found in a pond.



Which set of characteristics below best represents the above plant?

| Characteristics | | | |
|-----------------|------------|--------------------|---------------|
| | has flower | makes its own food | grows on land |
| (1) | ✓ | ✓ | ✓ |
| (2) | | ✓ | |
| (3) | ✓ | ✓ | |
| (4) | | | ✓ |

5. Study the diagrams:



bird's nest fern

Which statement(s) about the living things is/are not correct?

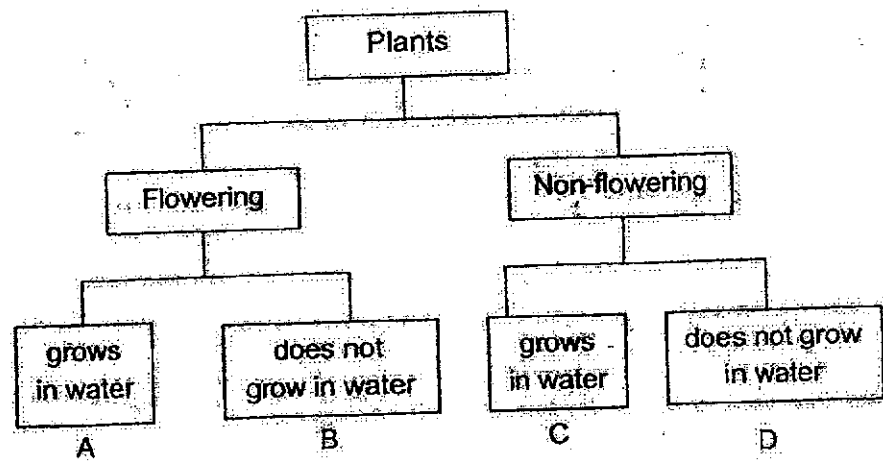
- A Both have flowers.
- B Both reproduce from spores.
- C Both cannot make their own food.

- (1) B only
- (2) C only
- (3) A and B only
- (4) A and C only

()

6 The table below contains some information on two plants X and Y.

| Characteristics | Plant X | Plant Y |
|-----------------|---------|---------|
| bears flowers | ✓ | |
| grows on land | | ✓ |



From the information given in the table above, where would you classify plants X and Y in the diagram?

| | Plant X | Plant Y |
|-----|---------|---------|
| (1) | A | C |
| (2) | A | D |
| (3) | B | C |
| (4) | B | D |

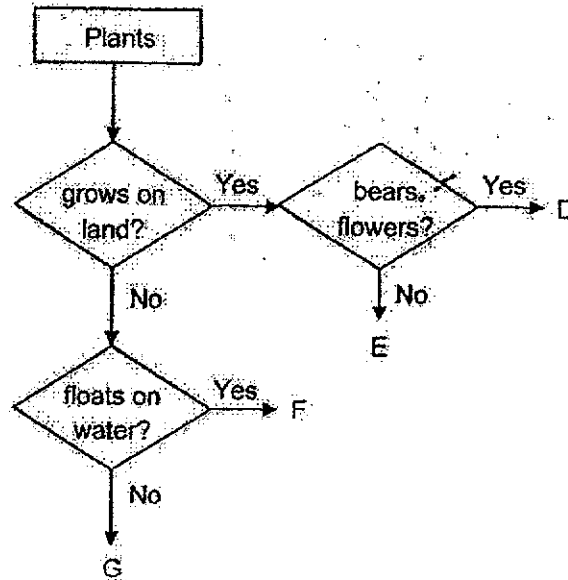
Section B (8 marks)

For questions 7 to 9, write your answers in this space provided.

The number of marks available is shown in brackets [] at the end of each question or part question.

(8 marks)

7 Study the diagram.



(a) State a similarity between plants F and G.

[1]

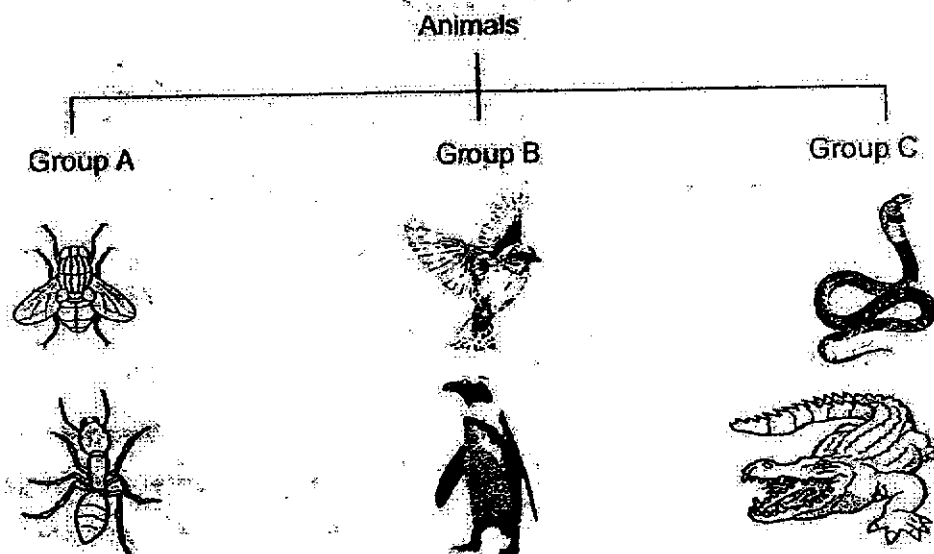
(b) State a difference between plants D and E.

[1]

(Go on to the next page)

| | |
|-------|---|
| SCORE | 2 |
|-------|---|

8 Study the groups of animals.



(a) Name the group of animals for Group A and Group B. [1]

Group A: _____

Group B: _____

(b) Based on the diagram, state one main characteristic of the animals in Group C that is not a characteristic of animals in Groups A and B. [1]

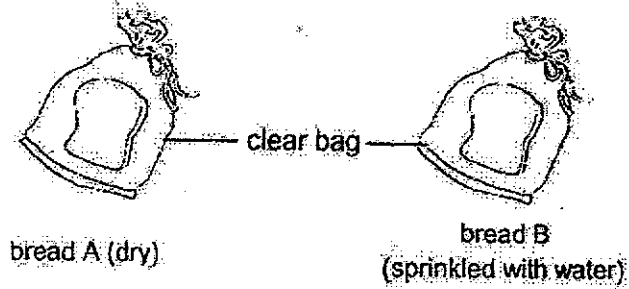
(c) Write "T" for true and "F" for false in the boxes. [2]

| | | |
|------|---|--|
| i. | Birds are the only animals with feathers. | |
| ii. | Amphibians live on land. | |
| iii. | Mammals produce milk for their young. | |
| iv. | Only insects lay eggs. | |

(Go on to the next page)

| | |
|-------|---|
| SCORE | 4 |
|-------|---|

- 9 Amanda carried out an experiment using two pieces of bread A and B. They were placed on a table in the same room.



She recorded her observations for 7 days in the table below.

| Day | bread A | bread B |
|-----|----------------------|----------------------|
| 2 | no observable change | no observable change |
| 4 | no observable change | a few dark spots |
| 7 | no observable change | more dark spots |

She observed that the dark spots on bread B were mould.

- (a) Which group of living things does mould belong to? [1]

- (b) What should Amanda keep the same in this experiment? Put a tick (✓) in the correct box. [1]

| | Tick (✓) |
|-------------------|----------|
| type of bread | |
| presence of water | |
| type of clear bag | |

| | |
|-------|---|
| SCORE | 2 |
|-------|---|

End of Paper

ANSWER KEY

LEVEL : PRIMARY 3
 SCHOOL : CATHOLIC HIGH SCHOOL (PRIMARY)
 SUBJECT : SCIENCE
 TERM : WA2

BOOKLET A

| | | | | | | | | | |
|----|---|----|---|----|---|----|---|----|---|
| Q1 | 4 | Q2 | 1 | Q3 | 2 | Q4 | 3 | Q5 | 4 |
| Q6 | 2 | | | | | | | | |

BOOKLET B

| | | | |
|------|--|----------|--|
| Q7a) | They both do not grow on land. | | |
| Q7b) | Plant D bears flowers while plant E does not bear flowers. | | |
| Q8a) | Group A: Insects Group B: Birds | | |
| Q8b) | Group C has dry skin with scales. | | |
| Q8c) | i) T ii) F iii) T iv) F | | |
| Q9a) | Fungi | | |
| Q9b) | | Tick (✓) | |
| | Type of bread | ✓ | |
| | Presence of water | | |
| | Type of clear bag | ✓ | |

