

Name: _____ ()

Class : Primary 4 _____

CHIJ ST NICHOLAS GIRLS' SCHOOL (PRIMARY)



Primary 4 Mathematics

2014 Semestral Assessment One

Booklet A

12 May 2014

TOTAL TIME FOR BOOKLETS A AND B: 1 HOUR 45 MINUTES

**Do not turn over this page until you are told to do so.
Follow all instructions carefully.
Answer all questions.**

This booklet consists of 10 printed pages including the cover pages.

Section A: (20 x 2 marks)

For each question, four options are given. One of the options is the correct answer. Shade the correct oval (1, 2, 3 or 4) on the Optical Answer Sheet. Please use only 2B pencil and SHADE the oval completely.

1. In the number 17 823, which digit is in the ten thousands place?

- 1) 1
- 2) 2
- 3) 7
- 4) 8

2. Which one of the following is the best estimate for 38×63 ?

- 1) 40×70
- 2) 40×60
- 3) 30×70
- 4) 30×60

3. Which one of the following numbers when rounded off to the nearest ten, becomes 37 500?
- 1) 37 448
 - 2) 37 494
 - 3) 37 496
 - 4) 37 507
4. Which one of the following numbers gives a quotient of 467 and a remainder of 3 when it is divided by 8?
- 1) 1401
 - 2) 1409
 - 3) 3736
 - 4) 3739
5. Which one of the following numbers is a multiple of 4 and a factor of 64?
- 1) 12
 - 2) 24
 - 3) 32
 - 4) 128

6. How many sixths are there altogether in $2\frac{1}{3}$?

1) 1

2) 2

3) 12

4) 14

7. When a number is divided by 4, the remainder is 2. When the same number is divided by 5, the remainder is 1. Which one of the following numbers is a possible answer?

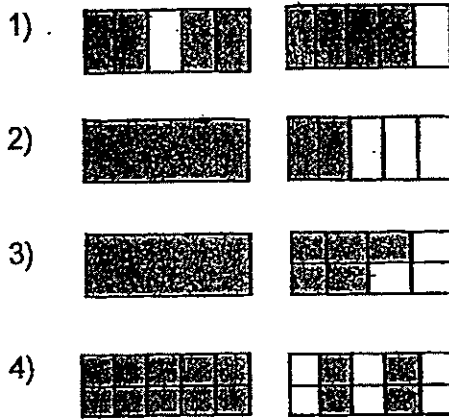
1) 105

2) 106

3) 115

4) 116

8. Which one of the following figures shows that $1\frac{3}{5}$ of the figure is shaded?



9. A box contains red and green marbles. $\frac{3}{5}$ of the marbles are red and the rest are green. If there are 120 green marbles, how many red marbles are there?

- 1) 300
- 2) 180
- 3) 80
- 4) 24

10. Which one of the following fractions is greater than half?

- 1) $\frac{1}{3}$
- 2) $\frac{3}{5}$
- 3) $\frac{4}{9}$
- 4) $\frac{5}{10}$

The table below shows the number of fruits sold at Uncle Tan's fruit stall on Monday. Use the table and answer questions 11 and 12.

Type of fruit	Number of fruits sold	Cost of each fruit	Amount of money collected
Avocado	57	\$2	\$114
Peach		\$3	
Guava	100	\$1 20	\$120
Total			\$342

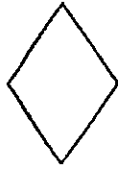
11. How many peaches did Uncle Tan sell?

- 1) 36
- 2) 74
- 3) 76
- 4) 108

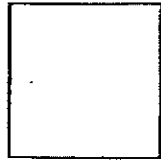
12. On Tuesday, Uncle Tan packed 100 guavas into bags of 5. He sold all the bags of guavas at \$4 each. How much less did he collect from the sale of all the guavas on Tuesday than on Monday?

- 1) \$ 30
- 2) \$ 40
- 3) \$ 80
- 4) \$ 200

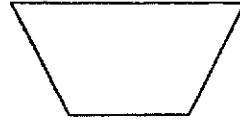
13. Which one of the following figures has only 1 pair of parallel lines?



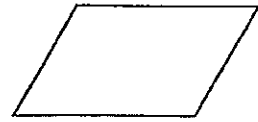
A



B



C



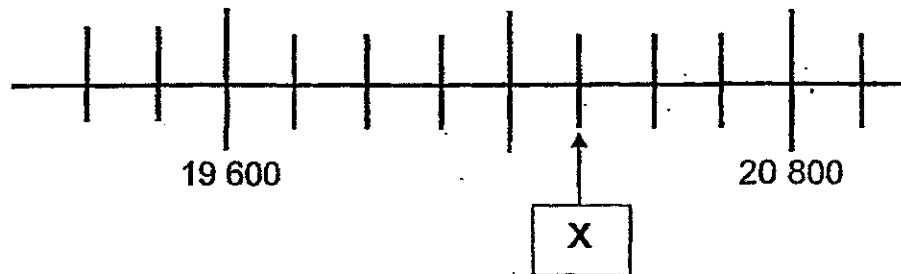
D

- 1) A
- 2) B
- 3) C
- 4) D

14. Mr. Kong bought $\frac{3}{4}$ kg of sugar on Tuesday. He bought another $\frac{2}{3}$ kg of sugar on Wednesday. How much sugar did he buy altogether?

- 1) $\frac{5}{7}$ kg
- 2) $\frac{1}{7}$ kg
- 3) $1\frac{7}{12}$ kg
- 4) $1\frac{5}{12}$ kg

15. What is the value of X in the number line?



- 1) 20 200
- 2) 20 320
- 3) 20 350
- 4) 20 500

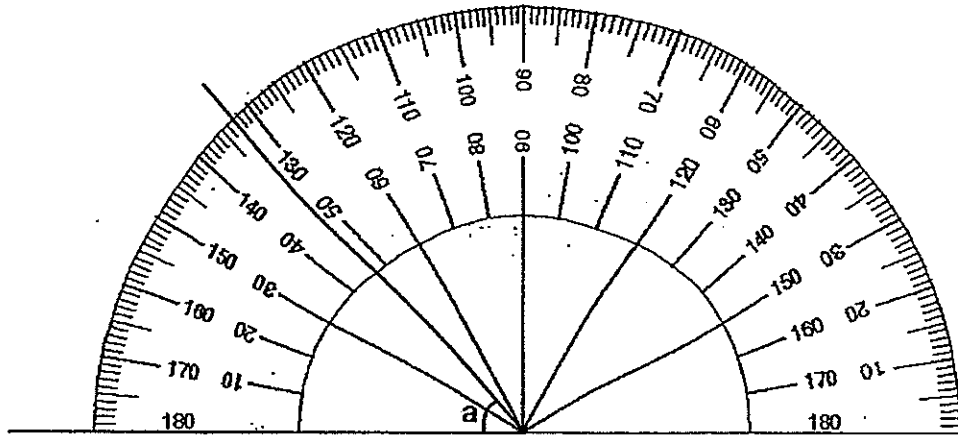
16. A pair of soccer boots and 4 similar jerseys cost a total of \$440. The pair of soccer boots costs the same as the 4 jerseys. How much does each jersey cost?

- 1) \$55
- 2) \$88
- 3) \$110
- 4) \$220

17. Arlene was facing the Southwest direction at first. She made a 135° turn in an anti-clockwise direction. What direction was she facing after the turn?

- 1) North
- 2) South
- 3) East
- 4) West

18. Find $\angle a$.

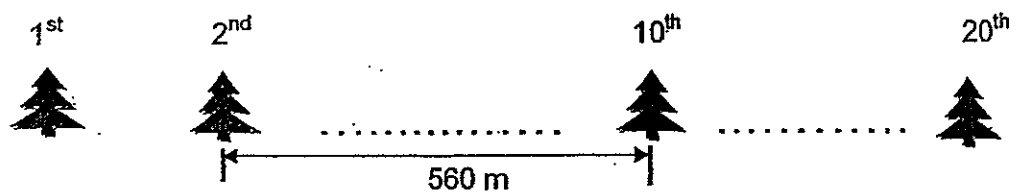


- 1) 47°
- 2) 53°
- 3) 133°
- 4) 147°

19. Tommy's age is 7 times of Kiera's age. Tommy is 12 years older than Kiera. What is their total age?

- 1) 16
- 2) 24
- 3) 72
- 4) 84

20. Some trees were planted at an equal distance apart from one another. The distance between the 2nd and the 10th tree is 560 m. A total of 20 trees were planted. What is the distance between the first tree and the last tree?



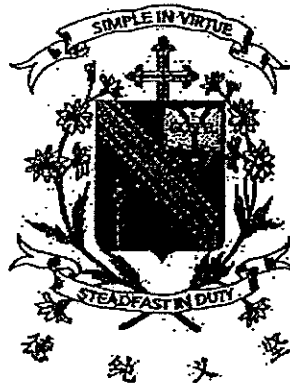
- 1) 1197 m
- 2) 1260 m
- 3) 1330 m
- 4) 1400 m

- END OF BOOKLET A -

Name: _____ ()

Class : Primary 4 _____

CHIJ ST NICHOLAS GIRLS' SCHOOL (PRIMARY)



Primary 4 Mathematics

2014 Semestral Assessment One

Booklet B

12 May 2014

Booklet A :	/ 40
Booklet B :	/ 60
Total :	/ 100

Parent's/Guardian's Signature

TOTAL TIME FOR BOOKLETS A AND B: 1 HOUR 45 MINUTES

Do not turn over this page until you are told to do so.
Follow all instructions carefully.
Answer all questions.

This booklet consists of 14 printed pages including the cover page.

Section B: (20 x 2 marks)

Do not
write in this
space

Write down your answers in the spaces provided. For questions which require units, give your answers in the units stated. Show all workings clearly.

21. Write 25 944 in words.

Ans : _____

22. Study the number pattern below. What are the missing numbers, A and B?

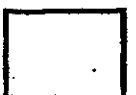
32 190 , 32 610, 33 030 , A , B , 34 290

Ans : A = _____

B = _____

23. The sum of 3 numbers is 3240. The first number is 906.
The second number is twice of the third number.
What is the third number?

Ans : _____



Do not
write in
this space

24. The number of competitors at a marathon, when rounded off to the nearest hundred, is 12 400. What is the greatest possible number of competitors at the marathon?

Ans : _____

25. Meylor baked 93 cupcakes. He packed all of them into boxes. There were 8 cupcakes in each box. How many boxes did he use to pack all the cupcakes?

Ans : _____

26. Xiaowei's monthly pocket money is \$210. Every month, she spends \$30 on transport, \$100 on food and saves the rest. How much will she save in a year?

Ans : \$ _____



27. List all the factors of 42.

Do not
write in
this space

Ans : _____

28. Use the numbers below to form the largest 5-digit odd number.

7	0	4	9	5
---	---	---	---	---

Ans : _____



29. Shaun has 420 stickers and Rahman has 360 stickers. How many stickers must Shaun give to Rahman so that each of them has the same number of stickers?

Do not
write in
this space

Ans : _____

30. Keryi packed some lollipops equally into bags of 102. He gave away 5 such bags. Then he had 36 lollipops left. How many lollipops did he pack at first?

Ans : _____

31. There are 6 adults and 48 children on board a train. What fraction of the passengers are adults? Give your answer in the simplest form.

Ans : _____



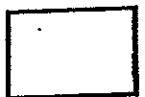
32. Leroy had 2ℓ of orange juice. He drank $\frac{1}{8}\ell$ of it in the morning. In the evening, he drank twice of what he drank in the morning. How many litres of orange juice did he have left? Express your answer as a mixed number.

Do not
write in
this space

Ans : _____ ℓ

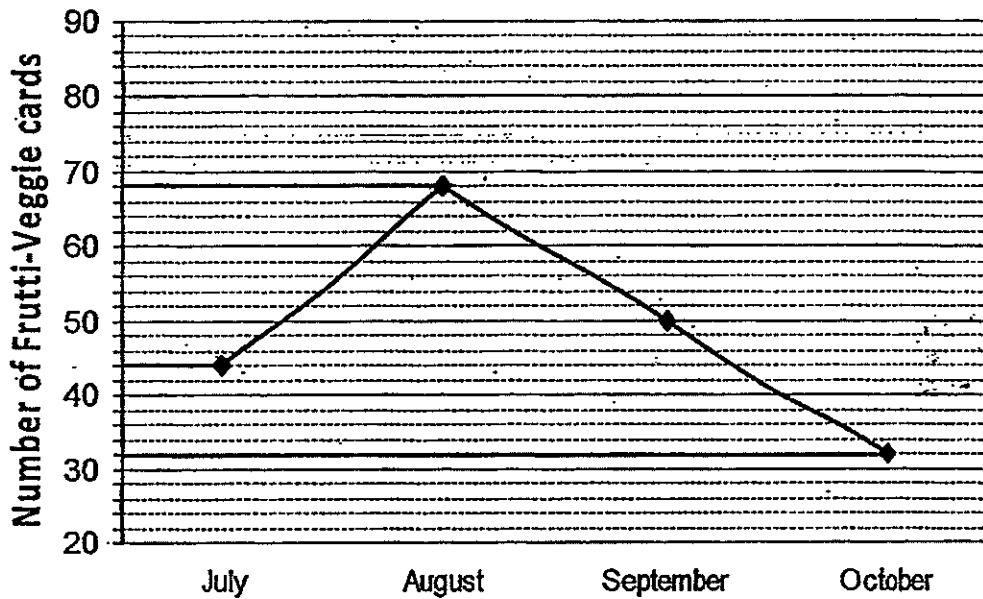
33. There were 4950 people at the Singapore Air show. $\frac{5}{6}$ of them were adults and the rest were children. If there were 345 girls, how many boys were there?

Ans : _____



The line graph below shows the number of Frutti-Veggie cards collected by a Primary 4 class from July to October. Study the graph carefully and answer questions 34 and 35.

Do not write in this space



34. Every pupil in the class collected 2 cards in August. How many pupils were there in the class?

Ans : _____

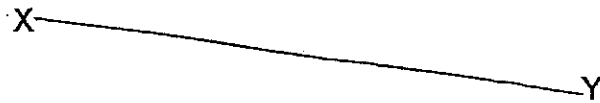
35. How many cards did the class have to collect in November so that a total of 300 cards would be collected from July to November?

Ans : _____



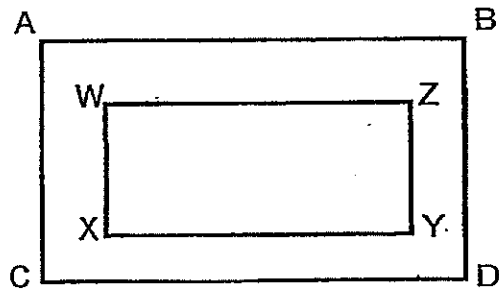
36. Draw a line perpendicular to XY passing through the point Z.

• Z



Do not write in this space

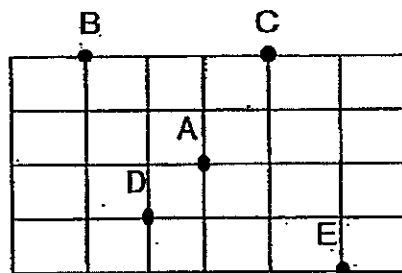
37. Name a vertical and a horizontal line in the figure below.



Ans : Vertical Line : _____

Horizontal Line : _____

38. Study the diagram below and answer the following question.



Point A is north-west of Point _____ .

Ans : _____



39. Martha had \$340. Jane had 3 times as much money as Martha. Jane had 2 times as much money as Belle. How much money did the 3 girls have altogether?

Do not
write in
this space

Ans : \$ _____

40. In a reading corner, books were placed equally on 6 shelves. 2 shelves were removed and the books on these shelves were placed on the remaining shelves. As a result, 4 extra books were placed on each remaining shelf. How many books were there in the reading corner?

Ans : _____



Section C: (20 marks)

Solve the following problems. All mathematical working and statements must be shown clearly.

Do not
write in this
space

41. At a funfair, a total of 5385 cookies were for sale. There were 3 times as many chocolate cookies as oatmeal cookies. There were 190 fewer oatmeal cookies than strawberry cookies. How many strawberry cookies were for sale?

Ans : _____ [3]



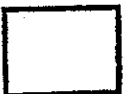
Do not
write in this
space

42. Margaret was given 2 pieces of ribbons of lengths 47 cm and 115 cm respectively. She was asked to cut out as many 6-cm pieces of ribbons as possible from them. What was the maximum possible number of such 6-cm pieces of ribbons Margaret could cut out?

Ans : _____ [3]

43. A truck containing 9200 litres of water was at a farm. After the truck transferred some water into a tank on the farm, the truck had 4 times as much water as the tank. If the tank had ~~350~~²¹³⁵ litres of water in the end, how much water did the truck transfer into the tank?

Ans : _____ [3]



44. Harry bought some meat. He gave $\frac{2}{9}$ of it to his brother, $\frac{1}{3}$ of it to his sister and the rest to his parents. His parents received 400 g more meat than his sister. How many grams of meat did Harry buy in all?

Do not
write in this
space

Ans : _____ [3]



45. 2 packets of flour and 2 bags of sugar weigh 2160 g. The mass of one packet of flour is $\frac{1}{3}$ the mass of one bag of sugar. What is the mass of one bag of sugar?

Do not
write in this
space

Ans: _____ [4]



46. Zulhaimi bought 4 similar shirts. Each shirt cost \$49. Dinesh bought 3 similar belts and paid \$56 more than Zulhaimi. How much would 15 such belts cost?

Do not
write in this
space

Ans : _____ [4]



****END OF PAPER****

CHIJ ST NICHOLAS GIRLS' SCHOOL (PRIMARY)

Primary 4 Mathematics

2014 Semestral Assessment One

1) 1

2) 2

3) 3

4) 4

5) 3

6) 4

7) 2

8) 1

9) 2

10) 2

11) 1

12) 2

13) 3

14) 4

15) 3

16) 1

17) 3

18) 1

19) 1

20) 3

21) Twenty-five thousand, nine hundred and forty-four.

22) A = 33450 , B = 33870



23) $3240 - 906 = 2334$

$2334/3 = 778$

24) 12499

25) 12

26) $\$210 - \$30 - \$100 = \80

$\$80 \times 12 = \960

27) 1, 2, 3, 6, 7, 14, 21, 42

28) 97 405

29) $420 - 360 = 60$

$60/2 = 30$

30) $102 \times 5 = 510$

$510 + 36 = 546$

31) $6/54 = 1/9$

32) $1/8 \times 3 = 3/8$

$2 - 3/8 = 1/5/8$

33) $5/6 \times 4950 = 4125$

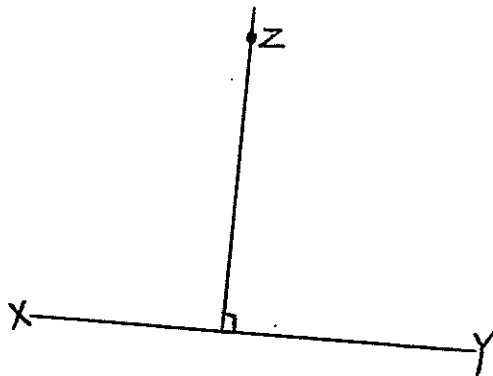
$4950 - 4125 = 825$

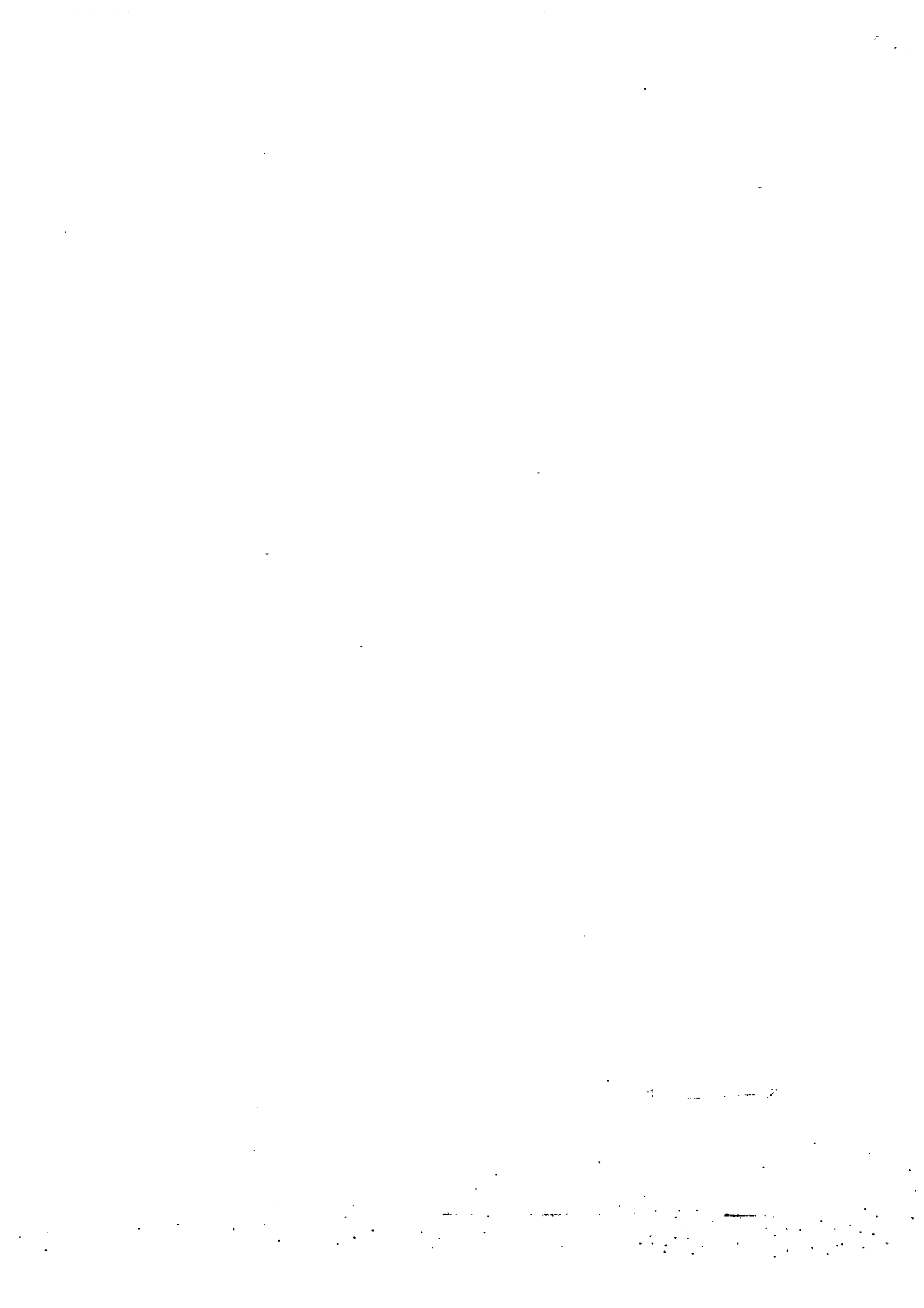
$825 - 345 = 480$

34) 34

35) $300 - 44 - 68 - 50 - 32 = 106$ cards

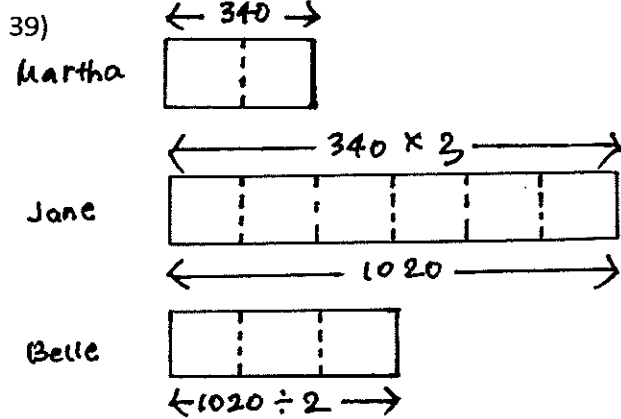
36)





37) Vertical Line : AC , Horizontal Line : AB

38) E



$$\$340 \times 3 = \$1020 \text{ (Jane)}$$

$$\$1020 / 2 = \$510 \text{ (Belle)}$$

$$\$340 + \$1020 + \$510 = \$1870$$

40) $6 - 2 = 4$ (number of shelves left)

$$4 \times 4 = 16 \text{ (extra books placed on the remaining shelves)}$$

$$16 / 2 = 8 \text{ (number of books on 1 shelf)}$$

$$8 \times 6 = 48 \text{ (number of books on 6 shelves)}$$

41)

chocolate
cookies



atmeal cookies



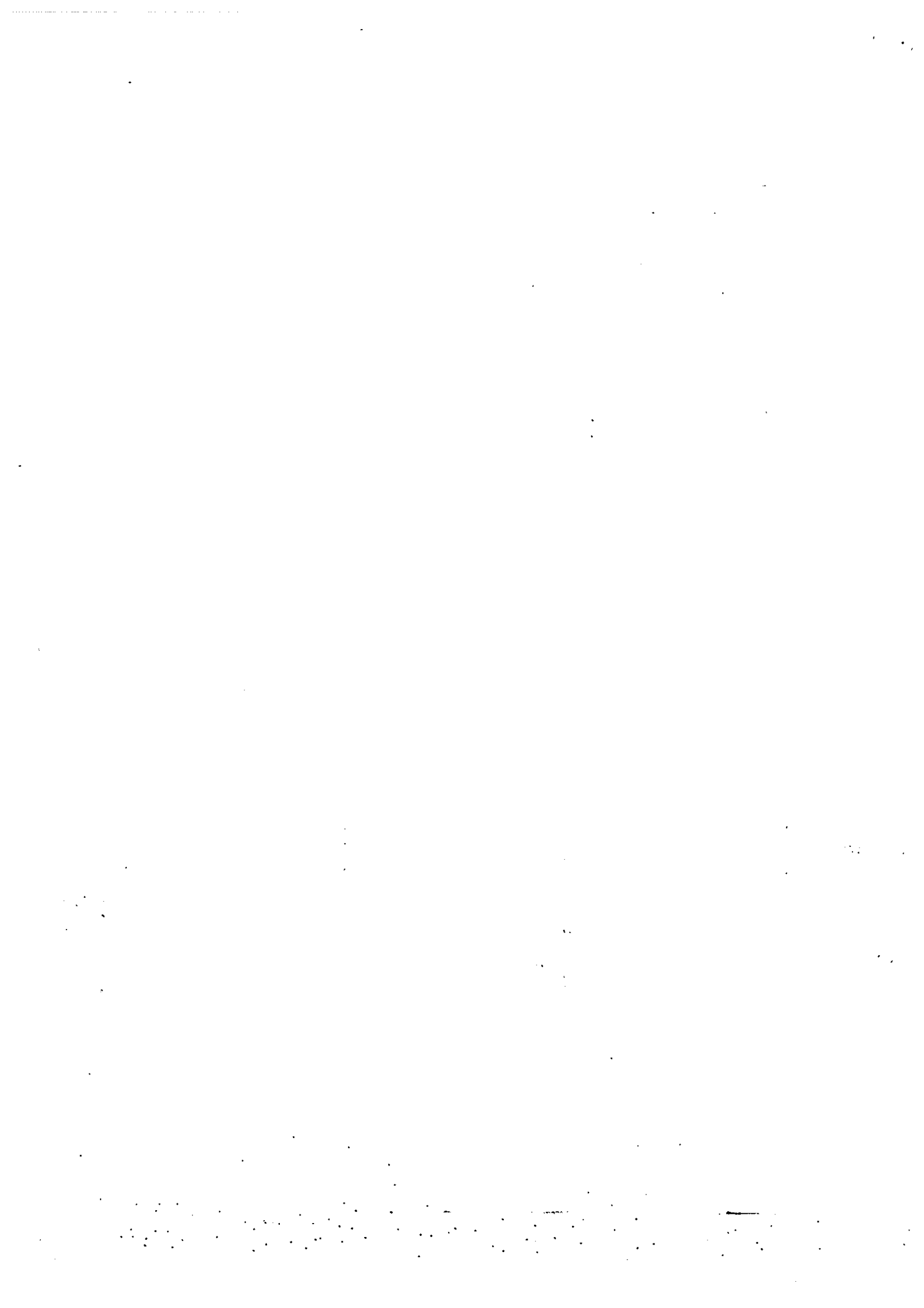
strawberry
cookies



$$5385 - 190 = 5195$$

$$5195 / 5 = 1039$$

$$1039 + 190 = 1229 \text{ strawberry cookies}$$



42) $47/6 = 7 \text{ R } 5$

$115/6 = 19 \text{ R } 1$

$7+19 = 26$ pieces of ribbon

43) $2135/ \times 4 = 8540/$

$9200/ - 8540/ = 660/$

44) $2/9 = 4/18$

$1/3 = 6/18$

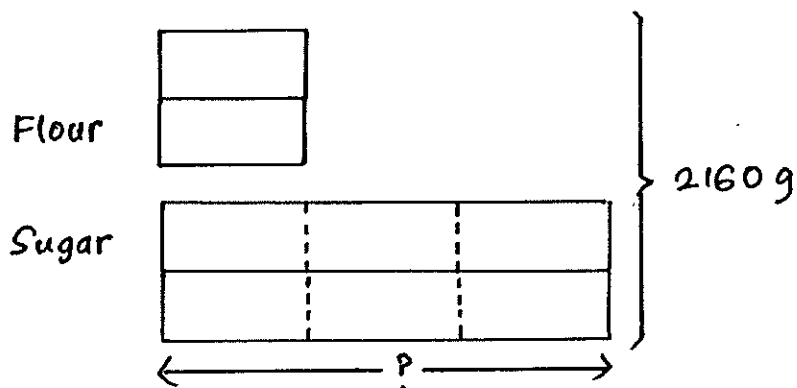
$18u - 6u - 4u = 8u$ (parents)

$8u - 6u = 2u$ (difference between parents & sister)

$2u \rightarrow 400 \text{ g}$

$18u \rightarrow 18/2 \times 400 \text{ g} = 3600 \text{ g}$

45)



$2160/8 = 270 \text{ g}$

$270 \times 3 = 810 \text{ g}$

