

<p>PEI CHUN PUBLIC SCHOOL</p> <p>PRIMARY 4</p> <p>TERM 2 WEIGHTED ASSESSMENT 2024</p> <p>SCIENCE</p> <p>Time: 30 min</p>
--

Name: _____ ()

Class: Primary 4 / () _____

Date: 15 May 2024

Science Teacher: _____

Parent's Signature: _____

SECTION A	10
SECTION B	10
TOTAL	20

INSTRUCTIONS TO CANDIDATES

1. Do not turn over this page until you are told to do so.
2. Follow all instructions carefully.
3. Answer all questions.
4. Write your answers in this booklet.

This booklet consists of **8** printed pages including the cover page.

Section A (5 × 2 marks)

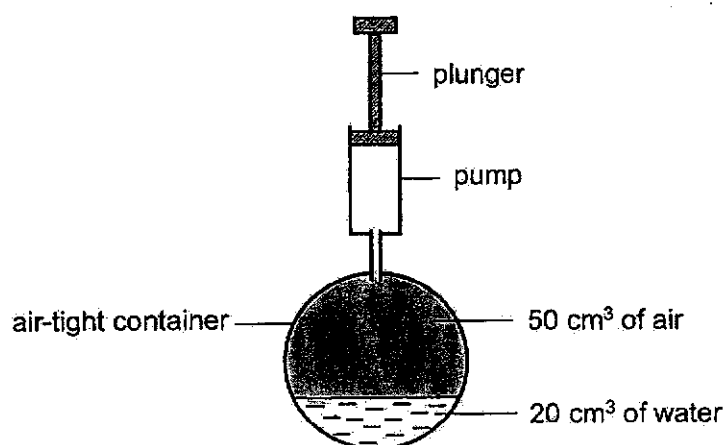
For questions 1 to 5, choose the most suitable answer and write its number (1, 2, 3 or 4) in the brackets provided.

1 Which of the following is **not** matter?

- (1) air
- (2) glue
- (3) paper
- (4) shadow

()

2 The container holds 20 cm^3 of water and 50 cm^3 of air:



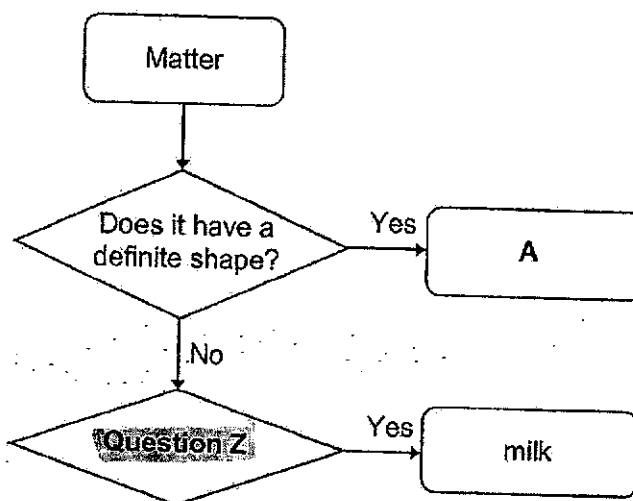
When the plunger was pushed in completely, 10 cm^3 of air was forced into the container.

What would be the final volume of the air in the container?

- (1) 10 cm^3
- (2) 50 cm^3
- (3) 60 cm^3
- (4) 80 cm^3

()

- 3 Study the flow chart shown below.



What could A and question Z be?

	A	Question Z
(1)	coin	Does it have definite volume?
(2)	air	Does it have definite volume?
(3)	coin	Can it be compressed?
(4)	air	Can it be compressed?

()

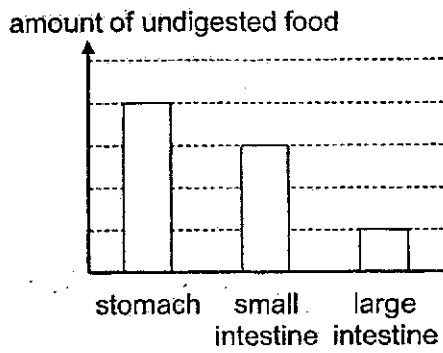
- 4 In which of the following parts of the human digestive system is digested food absorbed into the blood?

- (1) mouth
- (2) stomach
- (3) small intestine
- (4) large intestine

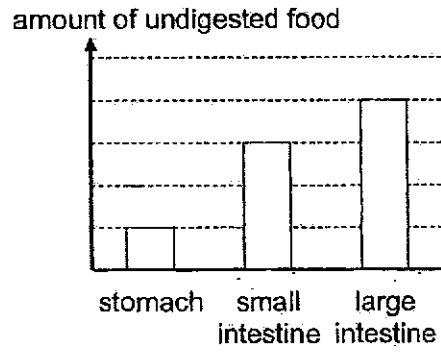
()

5 Which of the following graphs correctly shows the amount of undigested food leaving some of the organs in the digestive system after a meal?

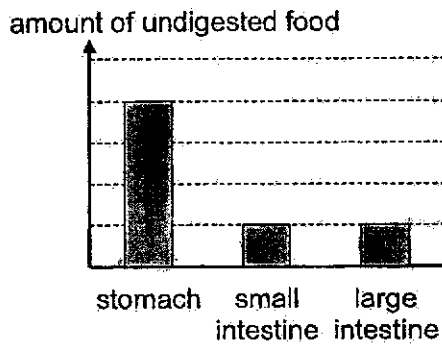
(1)



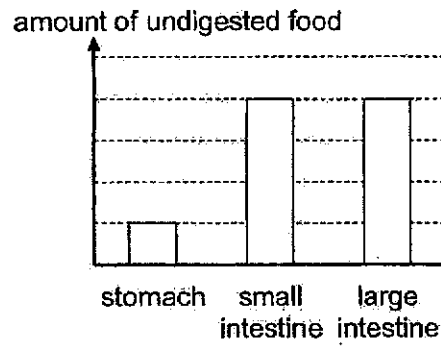
(2)



(3)



(4)



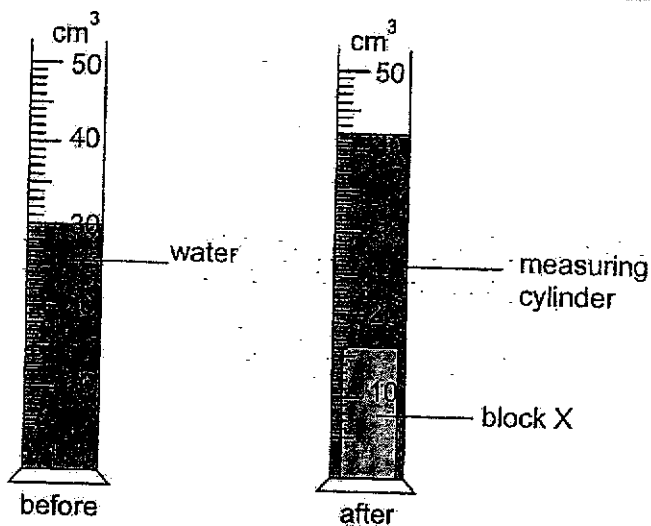
()

End of Section A

Section B (10 marks)

For questions 6 to 9, write your answers in the spaces provided.

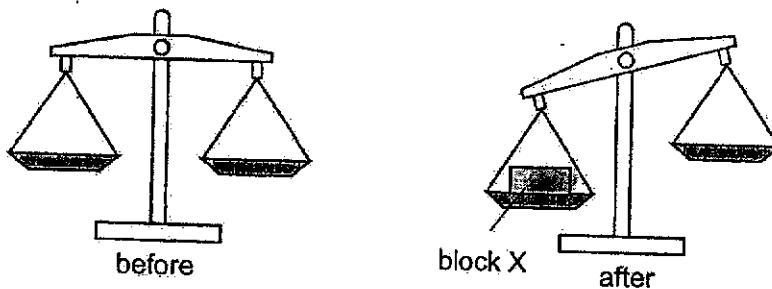
6 Siti placed block X into a measuring cylinder with some water as shown below.



(a) What was the volume of the metal block? [1]

_____ cm³

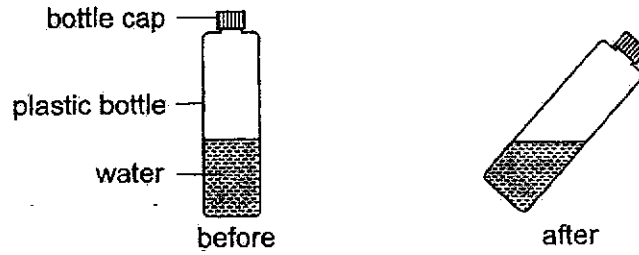
(b) Siti conducted an experiment by placing block X on a balance. The diagram below shows what she observed.



Which property of matter was shown in this experiment? [1]

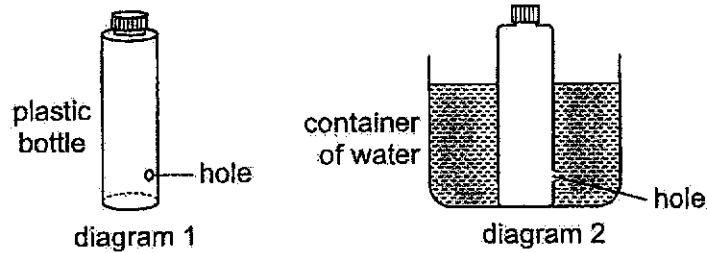
SCORE	
-------	--

- 7 Andy filled a plastic bottle with some water. The diagram below shows what he observed when he tilted the bottle.



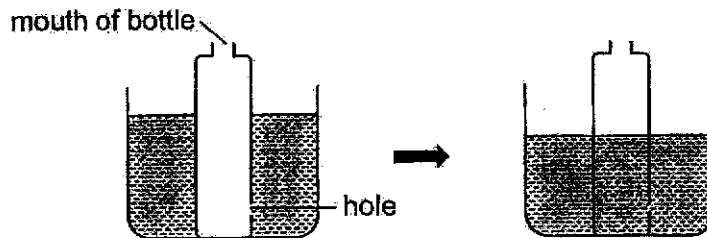
- (a) Explain his observation using a property of liquid. [1]

- (b) Andy emptied the bottle and poked a hole on it as shown in diagram 1. He placed the bottle into a container of water as shown in diagram 2.



- (i) Andy observed that the water in the container could not enter the bottle through the hole. Explain his observation [1]

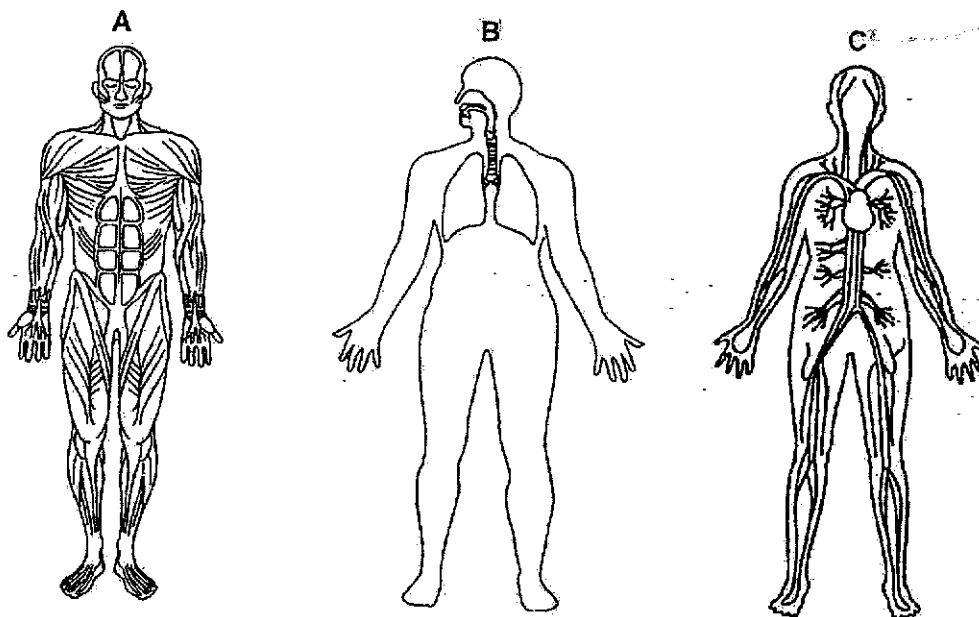
- (ii) Andy removed the bottle cap as shown below.



- Explain why water was able to enter the bottle when the bottle cap was removed. [1]

SCORE	
-------	--

8 Each diagram below represents a body system.



(a) Which system, A, B, or C, represents the respiratory system? [1]

System _____

(b) One of the body systems carries oxygen, digested food and water to different parts of the body.

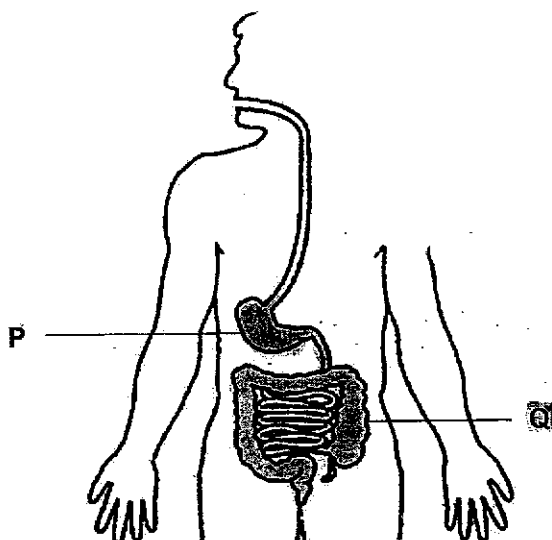
(i) Which system, A, B, or C, represents this system? [1]

System _____

(ii) Name this system. [1]

_____ system

- 9 The diagram below shows the human digestive system.



- (a) Name organ P. [1]

- (b) State the function of organ Q. [1]

End of Section B

SCORE	
-------	--

Pei Chu Public School
Primary 4 Science
Term 2 Weighted Assessment 2024

Section A

Qn.	Ans.
	4
	2
	1
	3
	3

Section B

6a)	<p><i>Skill: Measuring volume of solid using measuring cylinder and water</i></p> <p>12 cm³ (42 cm³ - 30 cm³ = 12 cm³)</p>
b)	<p><i>Concept: A balance is used to compare the masses of two objects.</i></p> <p>Matter has mass.</p>
7a)	<p><i>Concept: Liquid has no definite shape.</i></p> <p><i>Observation: The shape of the water in the bottle changed.</i></p> <p>The water <u>has no definite shape</u> as it takes the shape of the bottle.</p>
b)	<p><i>Concept: Matter occupies space.</i></p> <p><i>Observation: Water could not enter the bottle through the hole.</i></p> <p>There was <u>air occupying the space in the bottle</u>. The air was trapped and it prevented water from entering the bottle, through the hole, to occupy the space.</p>
c)	<p><i>Concept: Matter occupies space.</i></p> <p><i>Observation: Water could enter the bottle through the hole when the cap was removed.</i></p> <p>Some of the <u>air in the bottle could escape through the mouth of the bottle</u>. Water would be able to enter through the hole and occupy the space that was previously occupied by the air.</p>

8a)	System B is the respiratory system
b)	i) System C ii) Circulatory system
9a)	Stomach
b)	<u>Water is absorbed from the undigested food into the blood.</u>