

卍慈学校
一年级高级华文复习 (一)

姓名: _____ ()

成绩: _____ / 20

班级: 1 / _____

日期: 2月26日

家长签名: _____

(一) kàn hàn zì, quān pīn yīn (看汉字, 圈拼音) 7分

例: 八 bā bá bǎ bà

1. 弟 dī dí dǐ dì

2. 日 rì ní rǐ rì

3. 几 jǐ jí jǐ jì

4. 和 hē hé hě hè

5. 我 wǒ wó wǒ wò

6. 这 zhè zhé zhě zhè

7. 书 shū shú shǔ shù

(二) kàn tú xuǎn pīn yīn (看图选拼音) 7分

mǔ jī

yǐ zi

bì hǔ

dú shū

shū zi

yè zi

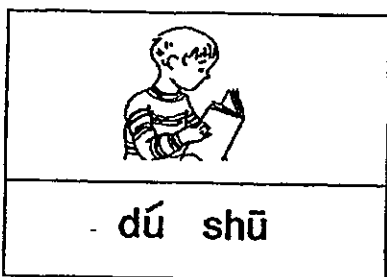
lì zhī

bā shí

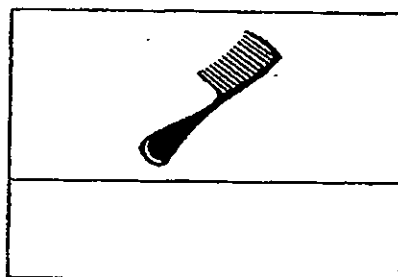
mǎ yǐ

bā shì

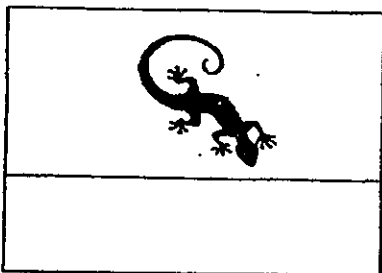
例:



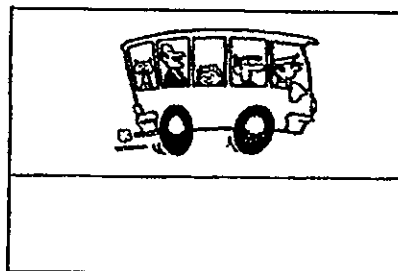
1.



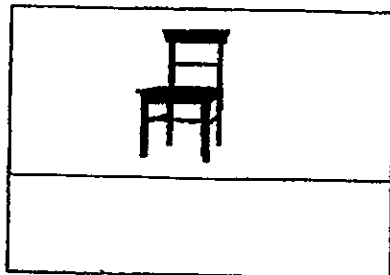
2.



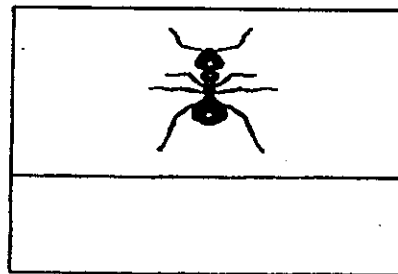
3.



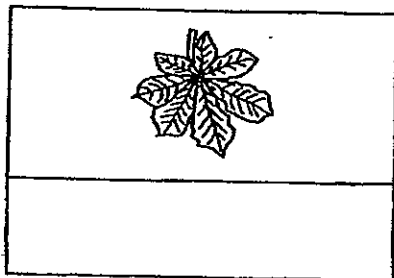
4.



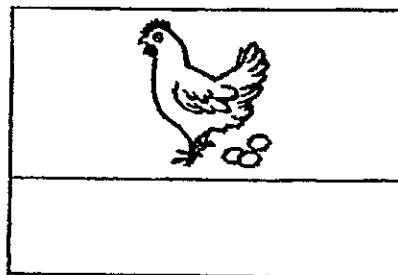
5.



6.



7.



(三) kàn tú lián yi lián (看图连一连) 6分

例:



•

•

qì chē

1.

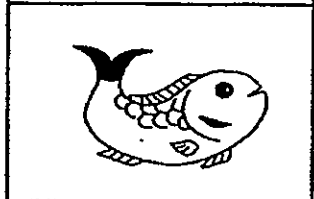


•

•

xǐ yī fu

2.



•

•

dú shū

3.



•

•

yú

4.

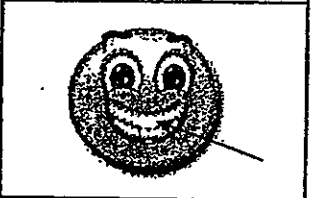


•

•

zhī zhū

5.

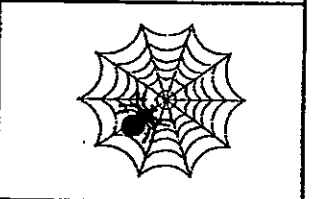


•

•

hú li

6.

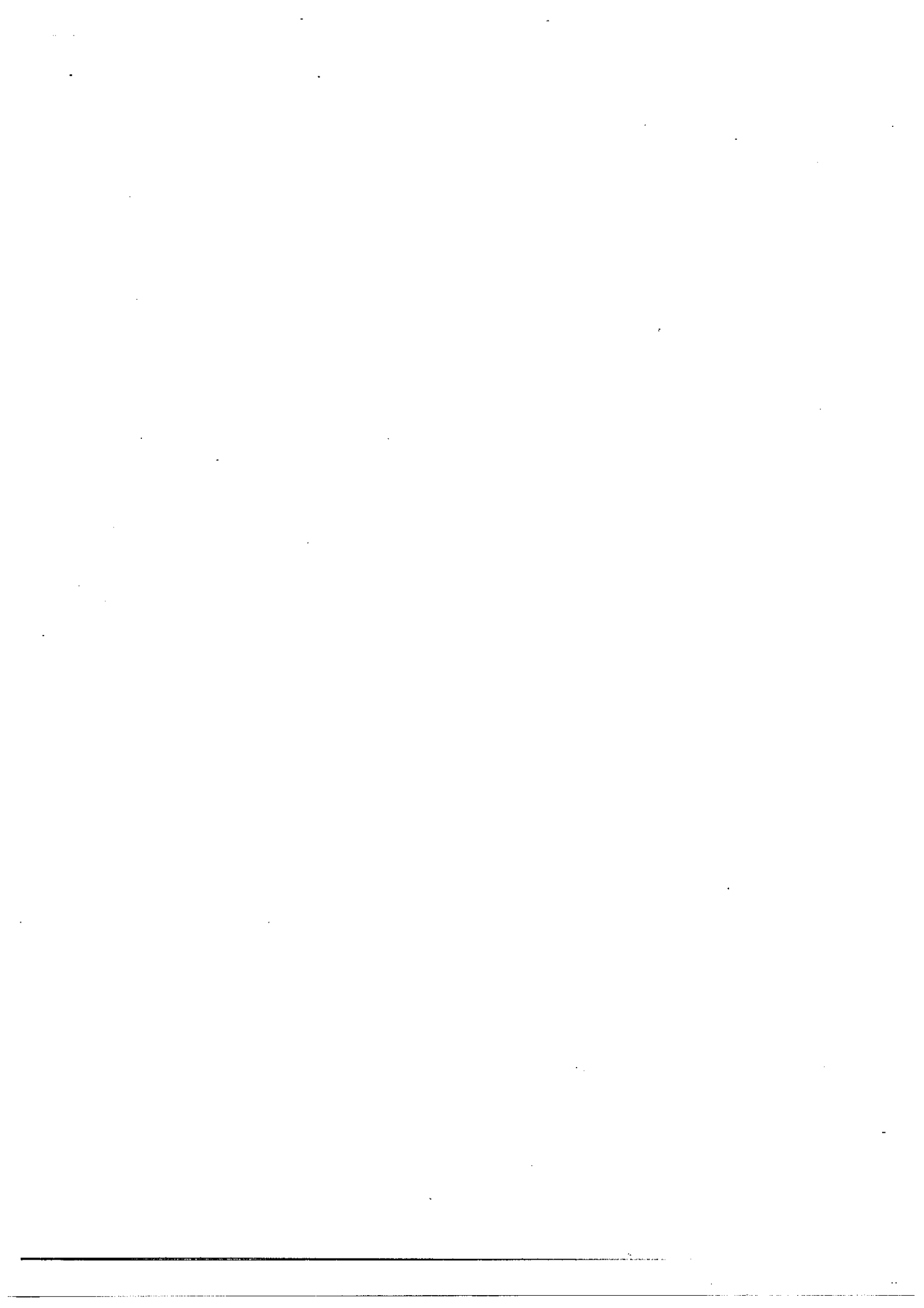


•

•

yá chǐ

qǐng rèn zhēn jiǎn chá
-请认真检查-



ANSWER SHEET

EXAM PAPER 2013

SCHOOL : RED SWASTIKA

SUBJECT : PRIMARY 1 CHINESE

TERM : TEST 1

复习 (一)

(一)

Q1 d ì

Q2 r ì

Q3 j ì

Q4 h é

Q5 w ǒ

Q6 z h è

Q7 s h ū

(二)

Q1 s h ū z i

Q2 b ì h ŭ

Q3 b ā s h ì

Q4 y ĭ z i

Q5 m ǎ y ĭ

Q6 y è z i

Q7 m ŭ y ĭ

(三)

Q1 q i c h ē

Q2 y ú

Q3 x i y ī f ú

Q4 h.ú l i

Q5 y á c h ĭ

Q6 z h ī z h ū