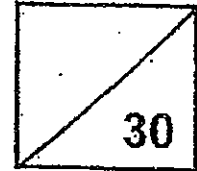




**Rosyth School**  
**Topical Test for 2012**  
**SCIENCE**  
**Primary 3**

Name: \_\_\_\_\_

Total  
Marks:



Class: Pr 3 \_\_\_\_\_

Register No. \_\_\_\_\_

Duration: 1 h

Date: 29<sup>th</sup> February 2012

Parent's Signature: \_\_\_\_\_

Instructions to Pupils:

1. Do not open the booklet until you are told to do so.
2. Follow all instructions carefully.
3. This paper consists of 2 sections, Part I and Part II.
4. For questions 1 to 7, write the correct answer in the brackets provided.
5. For questions 8 to 12, give your answers in the spaces provided in Part II.

	<b>Maximum</b>	<b>Marks Obtained</b>
<b>Part I</b>	<b>14 marks</b>	
<b>Part II</b>	<b>16 marks</b>	
<b>Total</b>	<b>30 marks</b>	

\* This booklet consists of 10 pages. (pg. 1 to 10)

This paper is not to be reproduced in part or whole without the permission of the Principal.

**Part 1 (14 marks)**

For each question from 1 to 7, four options are given. One of them is the correct answer. Make your choice (1, 2, 3 or 4). Write the correct answer in the brackets provided.

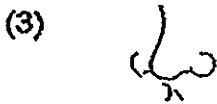
1. Which of the following characteristics can be used to classify things into living and non-living things?

- A: Can die
- B: Can grow
- C: Can move
- D: Need air, water and food

- (1) A only
- (2) D only
- (3) A, B and D only
- (4) B, C and D only

( )

2. Lina could smell the fish curry that her mother was cooking. Which one of the sense organs was she using?



( )

3. Two students were at the garden and made the following statements.

Alex: The fish swims away when I put my hand in the pond.  
Sarah: The earthworm curls up when I pick it up.

Which two characteristics of living things do the above statements describe?

- A: Living things can grow.
- B: Living things can reproduce.
- C: Living things can respond to stimuli.
- D: Living things can move by themselves.

- (1) A and B
- (2) B and D
- (3) A and C
- (4) C and D

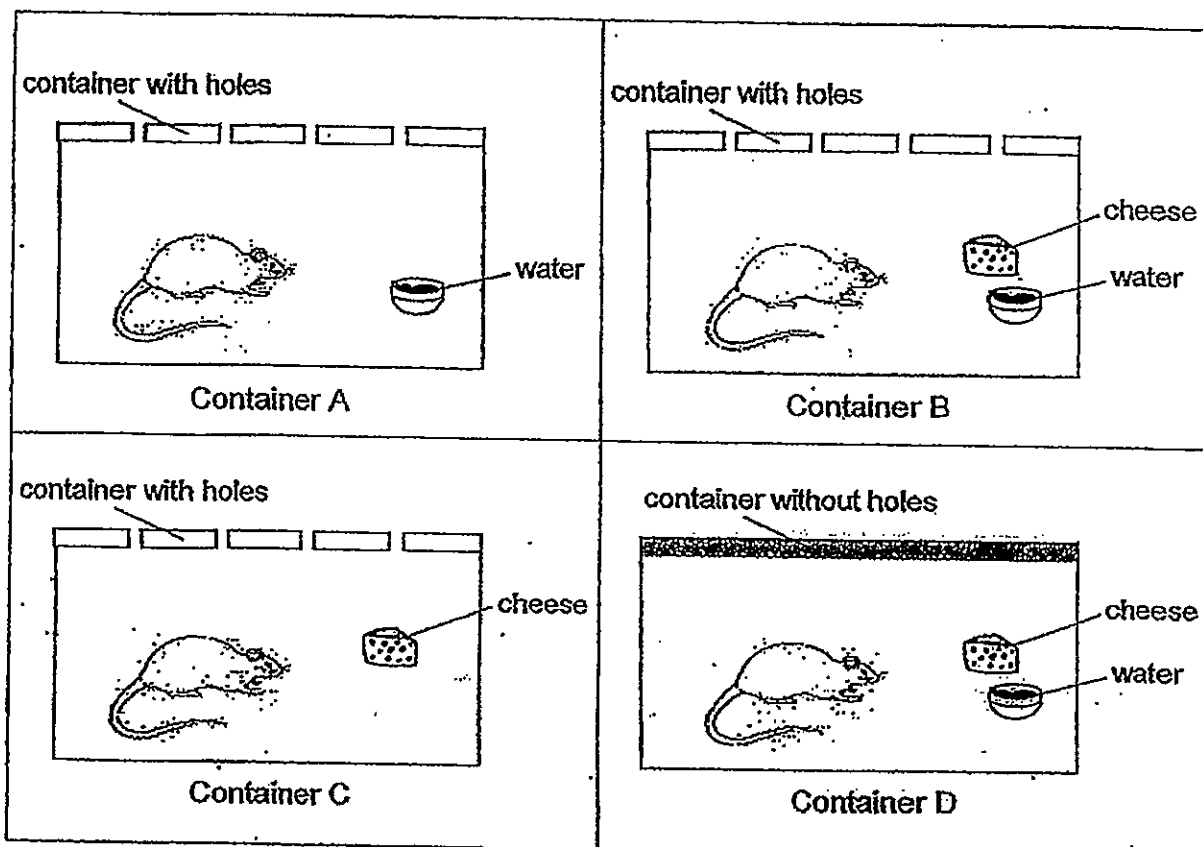
( )

4. Which of the following are examples of living things?

- (1) cat, snake and table
- (2) ball, cup and monkey
- (3) bird's nest fern, mango tree and ant
- (4) rubber ball, bird's nest fern and man

( )

5. Siti kept four rats in four different containers, A, B, C and D. They were left untouched for one week. Study the pictures carefully.

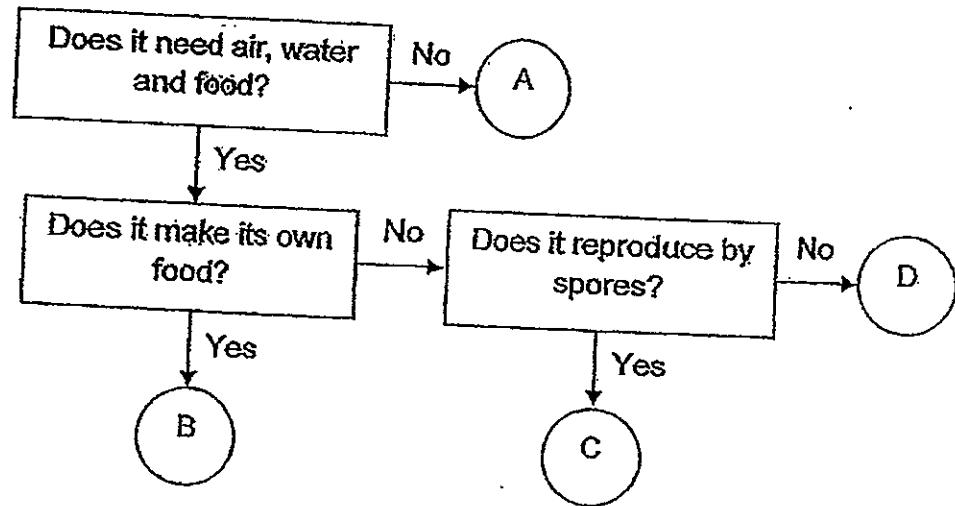


In which container will the rat most likely to live for the longest time?

- (1) A
- (2) B
- (3) C
- (4) D

( )

6. Study the flowchart below carefully to identify the groups of living things.



Which of the following is classified as animals?

- (1) A
- (2) B
- (3) C
- (4) D

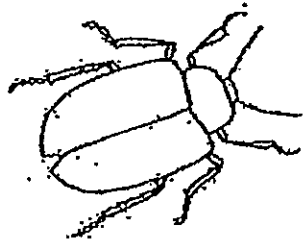
( . . )

⋮

7. The table below shows some characteristics of animal P, Q, R and S.

Animal	Characteristics	
P	Has antennae	Has six legs
Q	Has a tail	No legs.
R	Has a beak	Two legs
S	Has wings	Two legs

David found a picture of an animal as shown below.



Which animal (P, Q, R or S) has similar characteristics as the above animal?

- (1) P
- (2) Q
- (3) R
- (4) S

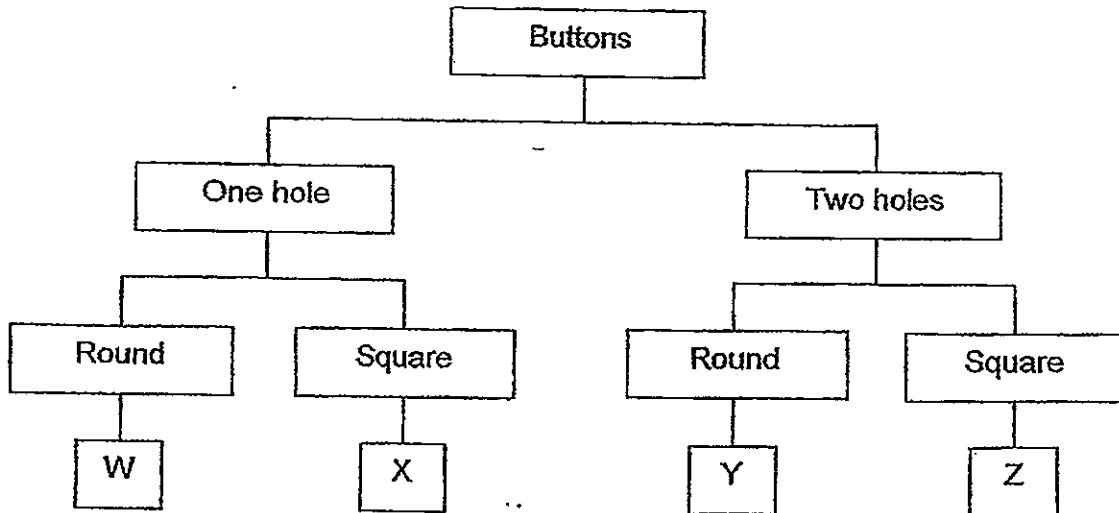
( )

End of Part 1

**Part II (16 marks)**

For questions 8 to 12, write your answers in the blanks provided.

8. Minah used two characteristics to classify a packet of buttons as shown below.



(a) Minah stated one of the characteristic she has used to classify the buttons in the blank below. State the other characteristic she has used.

(1m)

Characteristic 1: \_\_\_\_\_

Characteristic 2: \_\_\_\_\_

(b) State the similarity between the buttons W and X.

(1m)

\_\_\_\_\_

(c) State the difference between the buttons Y and Z.

(1m)

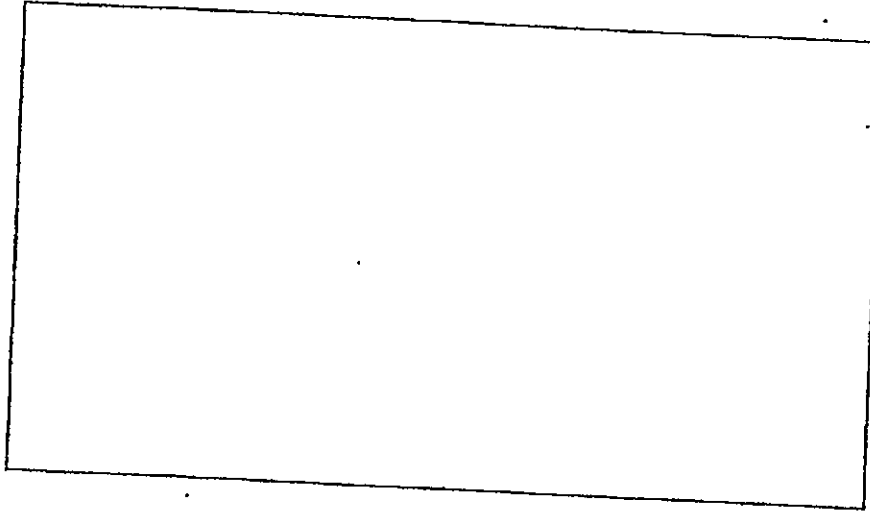
\_\_\_\_\_

⋮

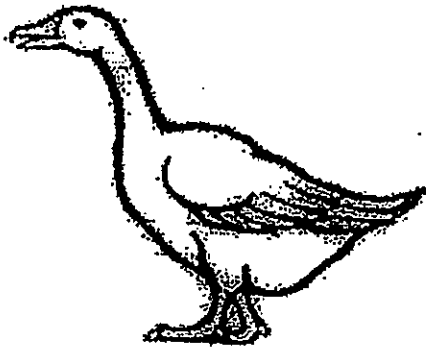
(Q8 continues on page 7.)

(d) Draw button Y in the box given below.

(1m)



9. Study the picture below.



(a) Which group of animals would you place the animal above?

(1m)

---

(b) Give a reason to support your answer in (a).

(1m)

---

⋮

---



10. Ming Hui prepared two tanks of guppies as shown below.

	Amount of water (litre)	Amount of food (gram per day)	Number of guppies
Tank A	2	20	5
Tank B	2	0	5

She placed the two tanks at the same place for a week. She also added some water plants in the tanks.

(a) In which tank would the guppies die first? Explain why (1m)

---



---

(b) How do the water plants help the guppies survive? (1m)

---



---

(c) Two weeks later, Ming Hui found 10 more guppies in the tank.

Which characteristic of living things does this show? (1m)

---

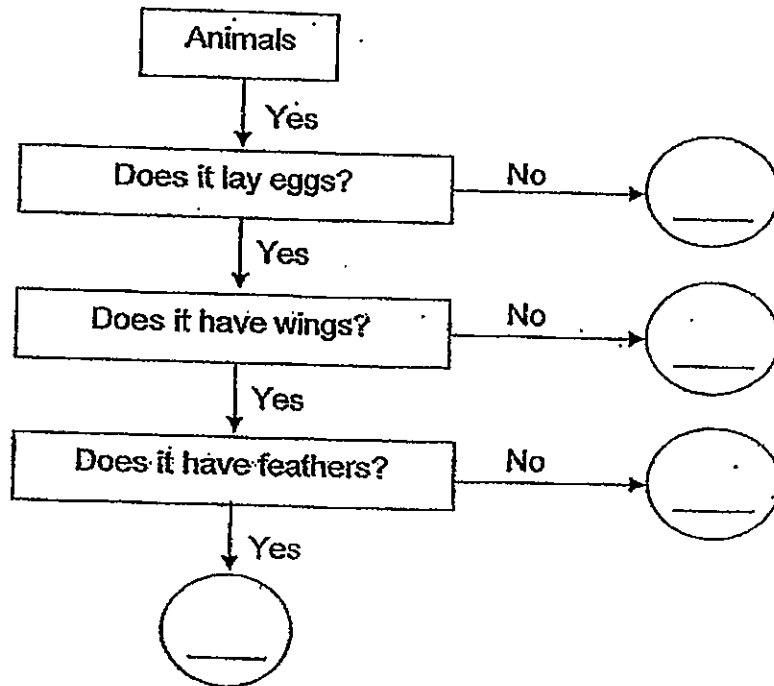


---

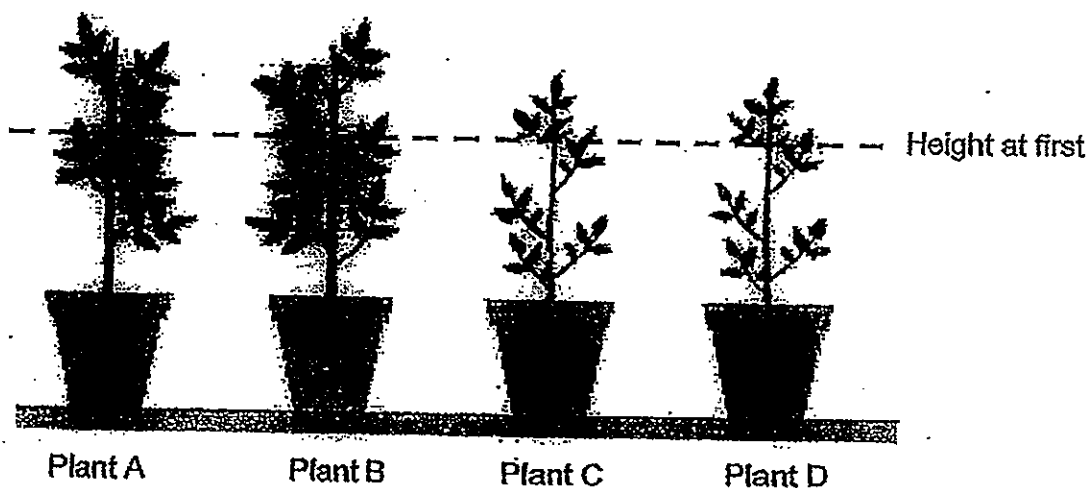
11. Study the table below.

Animal	Characteristics
A	It lays eggs, has wings and feathers.
B	It lays eggs, has wings and does not have feathers.
C	It lays eggs and does not have wings.
D	It does not lay eggs.

(a) Using the table above complete the flowchart by filling in animals A, B, C and D in the circle below. (4m)



12. Sally placed four pots of plants in her garden. At first, the plants were at the same height. A month later, she observed the four plants again as shown below.



(a) What is the characteristic of living things that Sally has observed from the plants? (1m)

---

---

(b) State the similarity between plants A and B after a month. (1m)

---

---

Sally kept the plants for three months. Then she made the following statement on her observation. Plants A, B, C and D are flowering plants.

(c) What did she observe that cause her to make the above statement? (1m)

---

---

End of Paper



# ANSWER SHEET

**EXAM PAPER 2012**

**SCHOOL : ROSYTH SCHOOL**

**SUBJECT : PRIMARY 3 - SCIENCE**

**TERM : CA 1**

**Order :**

---

Q1	Q2	Q3	Q4	Q5	Q6	Q7
3	3	4	3	2	4	1

8. a) Shape of button

b) Both buttons W and X have one hole.

c) Button Y is round but button Z is square.

d)



9. a) I would place the animal above into the group of birds.

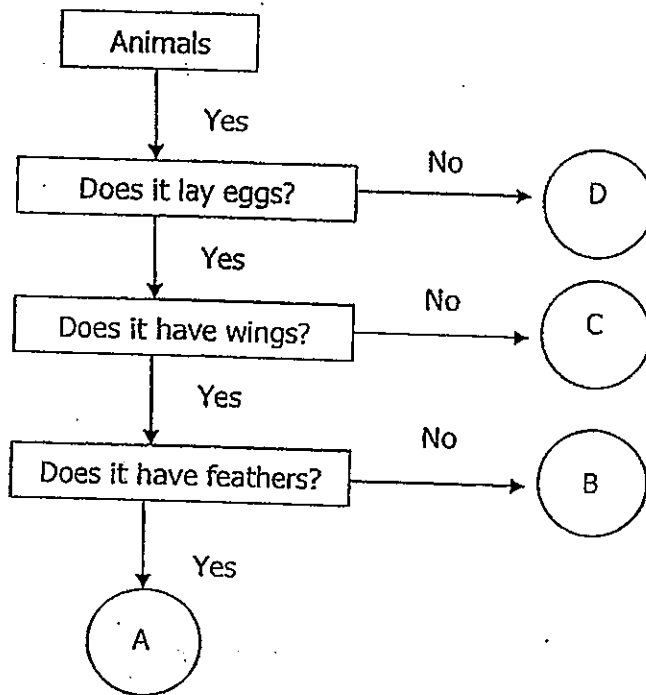
b) It has feathers and birds have feathers.

10. a) The guppies in tank B would die. They have no food.

b) The water plants produce air for the guppies.

c) Living things reproduce.

11.



12. a) Sally observed the growth of the plants.

b) Both plant A and B have the same height.

c) She saw flowers.