

ANGLO-CHINESE SCHOOL
(JUNIOR)



SEMESTRAL ASSESSMENT 1 (2013)
PRIMARY 3

SCIENCE

BOOKLET A

Friday

10 May 2013

1 hour 30 minutes

Name : _____ ()

Class : P3 _____

INSTRUCTIONS TO PUPILS

DO NOT TURN OVER THE PAGES UNTIL YOU ARE TOLD TO DO SO

Follow all instructions carefully.

There are 25 questions in this booklet.

Answer **ALL** questions.

INFORMATION FOR PUPILS

The total marks for this booklet is 50.

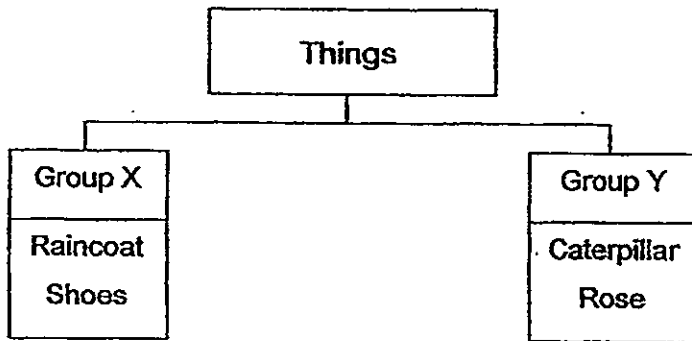
The total time for Booklets A and B is 1 hour 30 minutes.

This question paper consists of 13 printed pages. (Inclusive of cover page)

Section A (50 marks)

For each question from 1 to 25, four options are given. One of them is the correct answer. Choose the correct option (1, 2, 3 or 4) and shade the correct oval on the Optical Answer Sheet (OAS).

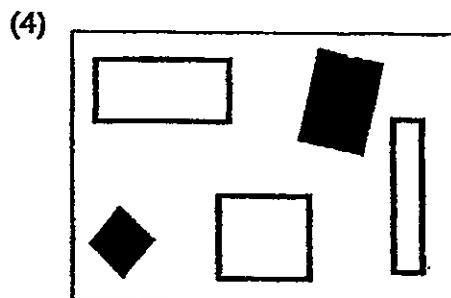
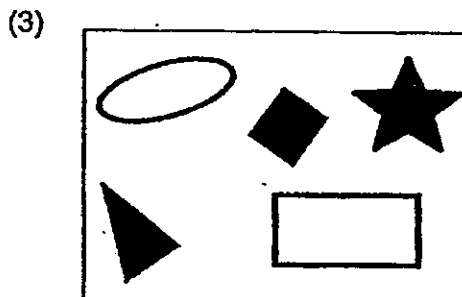
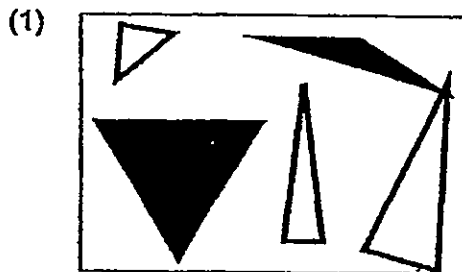
1 Study the classification chart below.



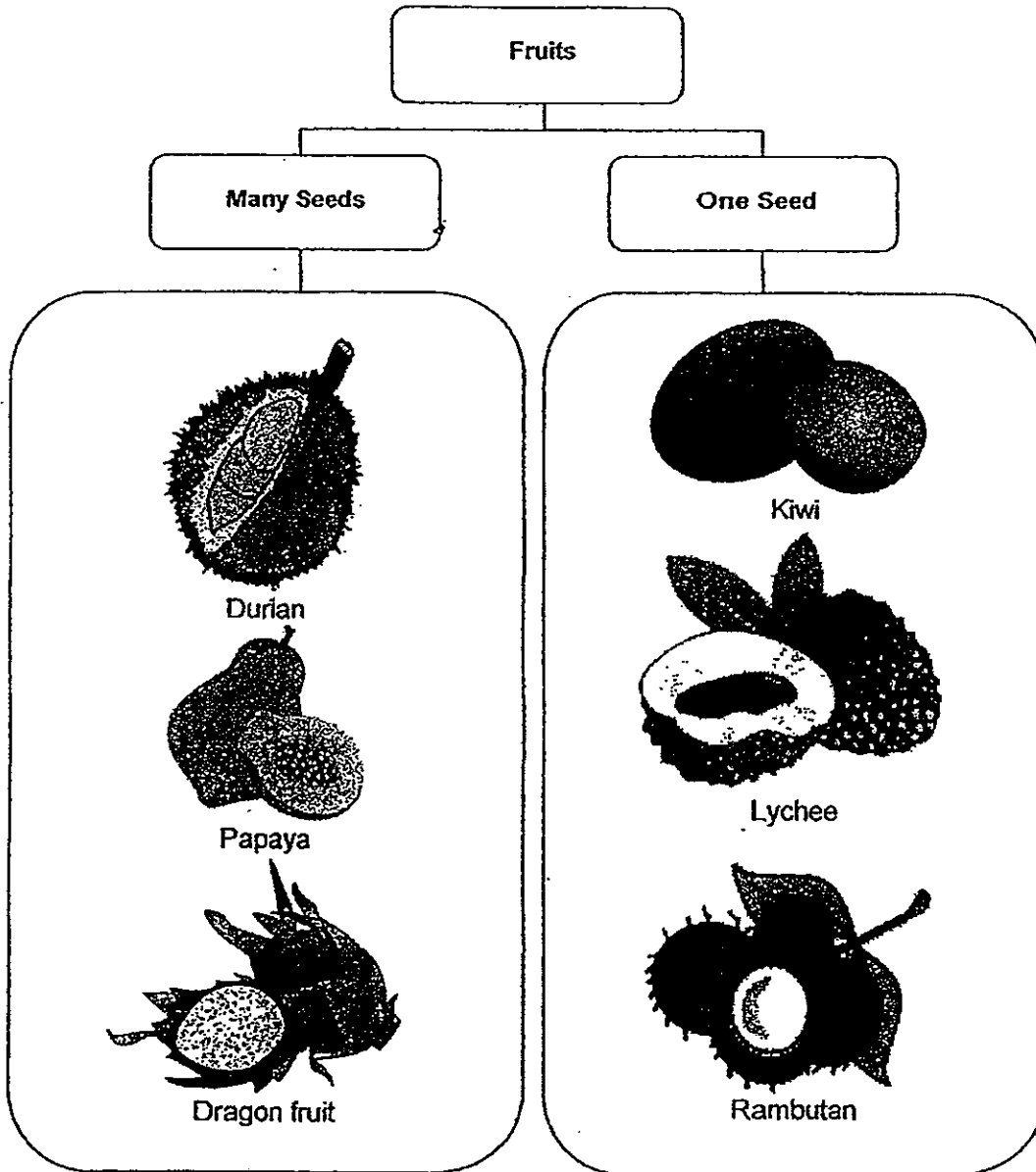
Which of the following things are best classified under Groups X and Y respectively?

	Group X	Group Y
(1)	Fern	Pencil
(2)	Mushroom	Cat
(3)	Sofa	Crocodile
(4)	Car	Teddy Bear

2 Which of the following set of shapes is not grouped by the number of corners?



3 Study the classification table below.



Which fruit has been classified wrongly?

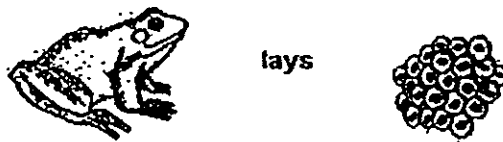
- (1) Kiwi
- (2) Durian
- (3) Papaya
- (4) Rambutan

4 Other than air, all living things need _____ to survive.

- A food
- B water
- C sunlight

- (1) A and B only
- (2) A and C only
- (3) B and C only
- (4) A, B and C

5 The diagram below shows that the adult frog can _____.



- (1) grow
- (2) reproduce
- (3) respond to changes
- (4) move by themselves

6 Aston classified the leaves into 2 groups as shown below.



Which of the following best describes the shape of each leaf?

	Leaf A	Leaf B
(1)	oval	round
(2)	palm	heart
(3)	heart	oval
(4)	round	heart

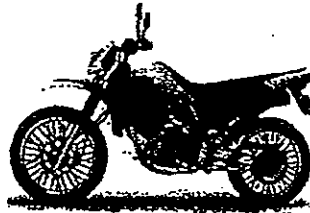
7 Study the objects below.



A: Seedling



B. Aeroplane



C. Motorcycle



D: Centipede

Which of these objects can move by itself / themselves?

- (1) D only
- (2) A and D only
- (3) B and C only
- (4) A, B, C and D

8 Three boys, James, Ken and Lance, studied the classification table below.

Have wings	Have fins	Have 6 legs	Have hair on their body
Ostrich	Goldfish	Damselfly	Bat
Sparrow	Shark	Mosquito	Human





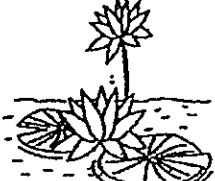

They then made the following statements:

- James: The table shows that an ostrich and sparrow can fly.
Ken: The table shows that animals are grouped according to their common characteristics.
Lance: The table shows that animals are grouped according to the way they move.

Who made the correct statement(s)?

- (1) Ken only
- (2) Lance only
- (3) James and Ken only
- (4) James and Lance only

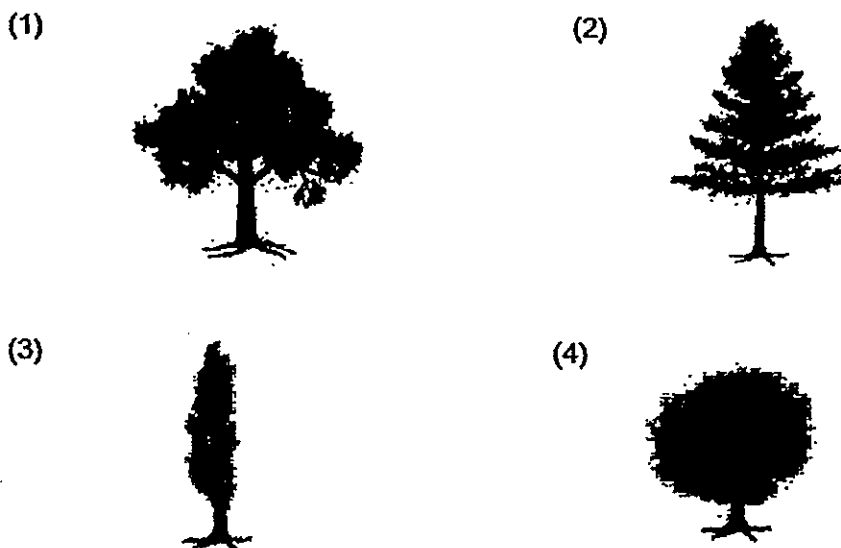
9 A florist classified some flowers into two groups as shown below.

Group 1	Group 2
 <p data-bbox="231 645 343 676">Flower Q</p>  <p data-bbox="510 645 622 676">Flower R</p>  <p data-bbox="399 900 510 931">Flower S</p>	 <p data-bbox="821 654 933 685">Flower T</p>  <p data-bbox="1069 654 1181 685">Flower U</p>  <p data-bbox="933 900 1045 931">Flower V</p>

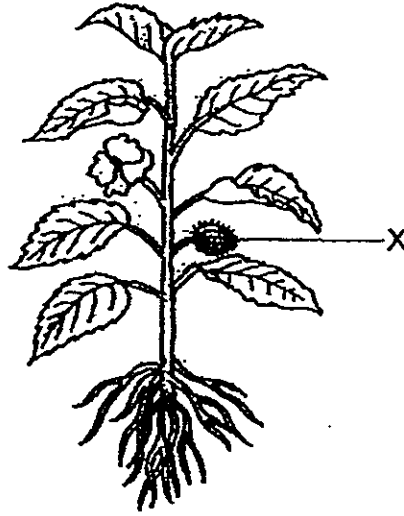
Which flower has been put into the wrong group?

- (1) Flower R
- (2) Flower S
- (3) Flower T
- (4) Flower U

10 The diagrams below show different types of trees. Which tree is able to provide the least shade?



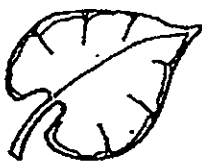
11 The diagram shows a plant.



Identify the plant part X.

- (1) root
- (2) fruit
- (3) leaf
- (4) stem

12 The diagrams below show some leaves.



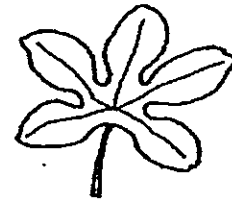
A



B



C

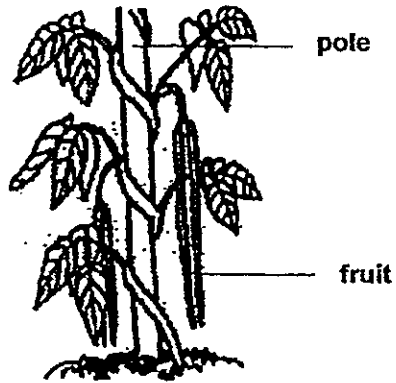


D

Which of these leaves has jagged edges?

- (1) A
- (2) B
- (3) C
- (4) D

- 13 The diagram below shows a plant grown in a garden.



Which of the following is/are true about the plant shown?

- A It has no roots.
- B It has a weak stem.
- C It is a flowering plant.

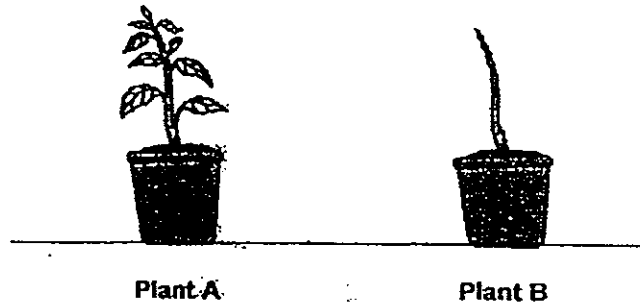
- (1) B only
- (2) A and B only
- (3) B and C only
- (4) A, B and C

- 14 Which of the following plants give off a sweet smell?

- A Rose
- B Jasmine
- C Rafflesia

- (1) A only
- (2) A and B only
- (3) B and C only
- (4) A, B and C

- 15 Mr Ali bought 2 pots of plants of the same type and size. He removed all the leaves on Plant B. He watered both plants with the same amount of water daily and left them in the garden.



A week later, Mr Ali noticed that plant B had dried up while plant A was growing well. This shows that plants need _____.

- (1) air to live
 - (2) sunlight to grow
 - (3) water to survive
 - (4) leaves to make food
- 16 Which of the following plants can be used to make food for Man?
- A jasmine
 - B allamanda
 - C chrysanthemum
- (1) A and B
 - (2) A and C
 - (3) B and C
 - (4) A, B and C

17 Observe the animal in the picture below.



Which part of its body does it use to eat?

- (1) legs
- (2) beak
- (3) wings
- (4) feathers

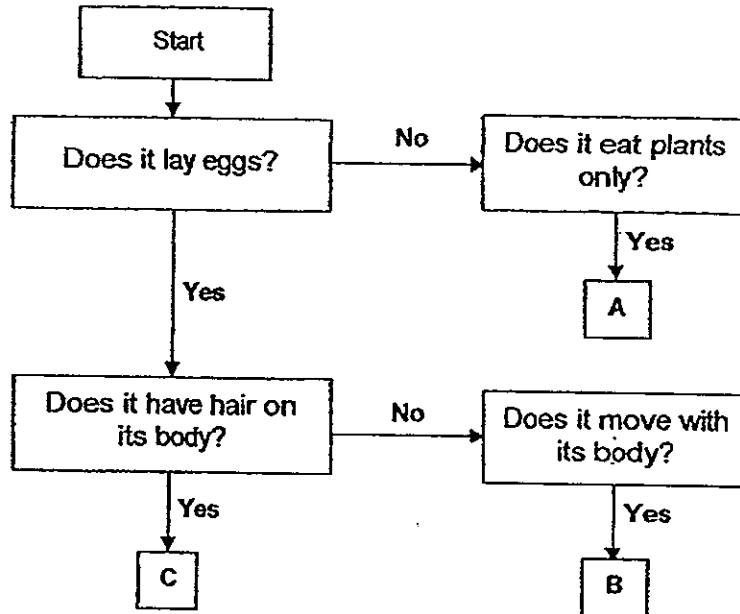
18 Isaac found some animals in the eco-garden. His brother told him that they were fish. To find out if his brother was right, Isaac decided to observe:

- A what they eat
- B type of outer coverings they have
- C the parts of the body that help them move

Which of the above will help him decide if the animals are really fish?

- (1) A and B only
- (2) A and C only
- (3) B and C only
- (4) A, B and C

19 Study the flow chart below carefully.



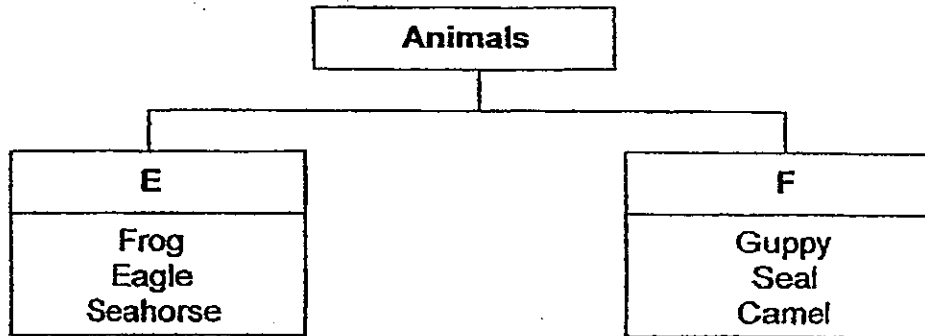
Which of the following best represent A, B and C respectively?

	A	B	C
(1)	Mouse	Dolphin	Cat
(2)	Zebra	Snake	Platypus
(3)	Cat	Platypus	Mouse
(4)	Platypus	Snake	Dolphin

20 Which of the following statements is true about living things responding to changes in their surrounding?

- (1) A hen laying eggs.
- (2) A tadpole growing into a frog.
- (3) A horse giving birth to its young.
- (4) A millipede coiling itself when someone touches it.

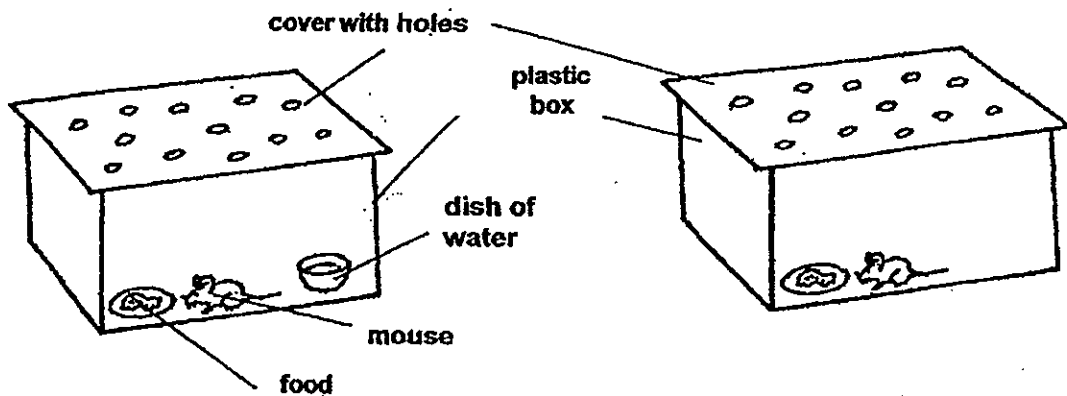
21 Some animals are classified into two groups as shown below.



Which of the following sets of sub-heading is correct?

	E	F
(1)	Fish	Mammals
(2)	Plant-eaters	Animal-eaters
(3)	Animals that live in the water	Animals that live on land
(4)	Animals that lay eggs	Animals that give birth to live young

22 Arjun conducted the following experiment.

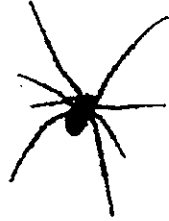


Based on the above experiment, Arjun wanted to find out if the mouse needs _____ to survive.

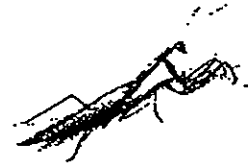
- (1) air
- (2) food
- (3) water
- (4) a box

23 Which of these is not an insect?

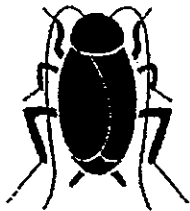
(1)



(2)



(3)



(4)



24 The diagram below shows a seagull.



The main reason why the seagull is a bird is because it _____.

- (1) can fly
- (2) lays eggs
- (3) has wings
- (4) has feathers

25 A fish and a house lizard may be put in the same group because they _____.



- (1) have a slimy body
- (2) live in the same place
- (3) move in the same way
- (4) have similar outer coverings

ANGLO-CHINESE SCHOOL
(JUNIOR)



SEMESTRAL ASSESSMENT 1 (2013)
PRIMARY 3

SCIENCE

BOOKLET B

Friday

10 May 2013

1 hour 30 minutes

Name : _____ ()

Class : P3__

INSTRUCTIONS TO PUPILS

DO NOT TURN OVER THE PAGES UNTIL YOU ARE TOLD TO DO SO

Follow all instructions carefully.

There are 14 questions in this booklet.

Answer **ALL** questions.

INFORMATION FOR PUPILS

The number of marks is given in brackets [] at the end of each question or part question.

The total marks for this booklet is 40.

The total time for Booklets A and B is 1 hour 30 minutes.

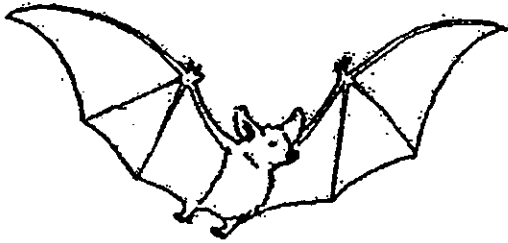
This question paper consists of 13 printed pages. (Inclusive of cover page)

BOOKLET A	150
BOOKLET B	140
TOTAL	90
Parent's signature/ Date:	

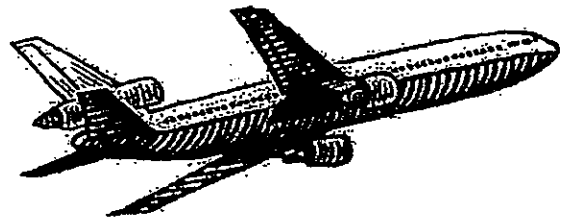
Section B (40 marks)

For questions 26 to 39, write your answers in this booklet. The number of marks available is shown in the brackets [] at the end of each question or part question.

26 Observe the two things below.



Thing Q



Thing R

(a) Based on what you can see, state one similarity between the two things. [1]

(b) State two differences between the two things. (Do not compare size) [2]

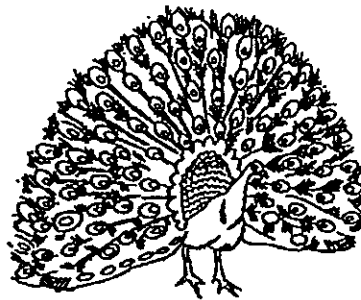
--

27 Study the classification chart below.

Animals	
Group A	Group B
Blue whale	Clownfish
Hippopotamus	Peacock

(a) State one way in which the above animals are grouped. [1]

(b) Some male animals, like the peacock, are more colourful than the female animal, the peahen.



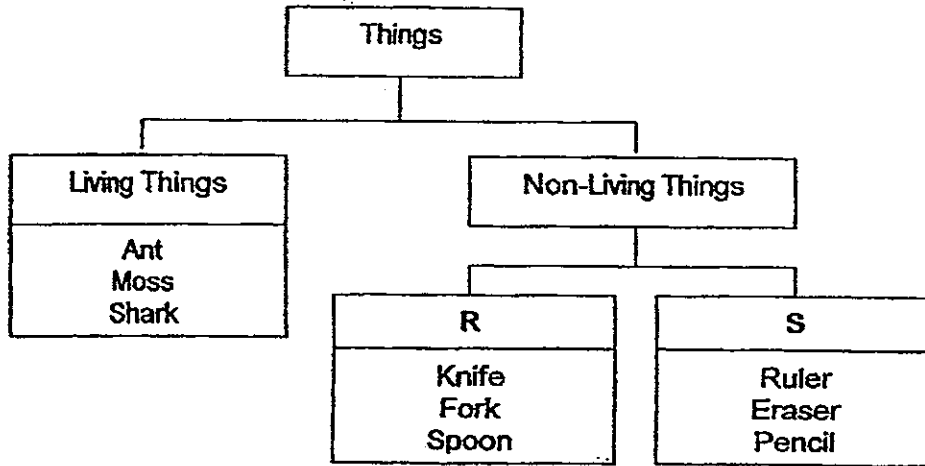
peacock

How is this useful to the male peacock? [1]

(c) Compare the outer coverings of the clownfish and the peacock. Name one difference in their outer coverings. [1]

--

28 Study the classification chart below.



(a) Give appropriate sub-headings to the above classification chart. [1]

R: _____

S: _____

(b) In which group (R or S), would you classify a plate? [1]

29 Alex has some guppies, water plants and tubifex worms in his fish tank. He observed them for four weeks and recorded his observation as shown in the table below.

Type of living thing	Number of living things at the end of			
	Week 1	Week 2	Week 3	Week 4
Guppies	4	4	5	7
Worms	80	55	30	5
Water plant	6	6	6	6

(a) Based on the results of Alex's experiment, what could he infer about the diet of the guppies? Circle the correct answer. [1]

plant eater

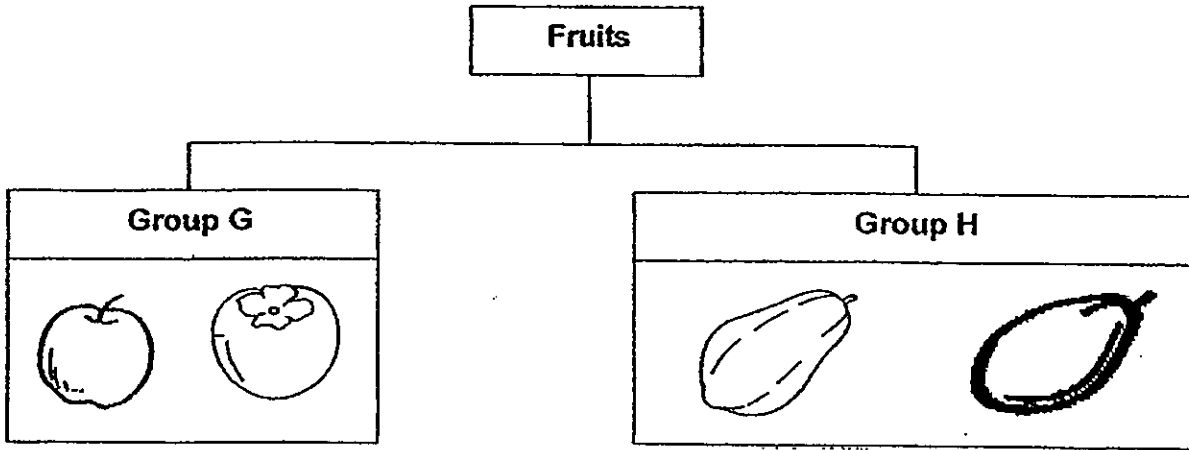
meat eater

plant and meat-eater

(b) Based on the results of Alex's experiment, state one characteristic of living things shown by the guppies. [1]

--

30 The classification chart below shows how some fruits are grouped.



(a) How are the fruits in Group H similar in terms of shape? [1]

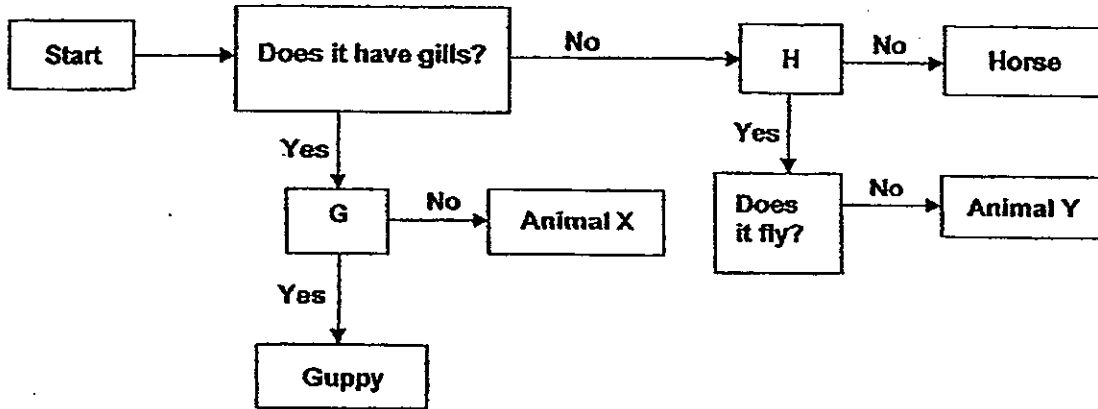
(b) In which group would you put an orange? [1]



(c) Explain your choice in (b) [1]

--

31 Study the flow chart about animals below.

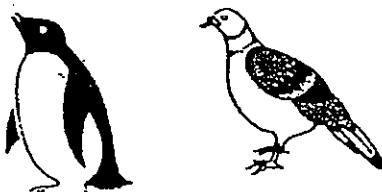



The letters, G and H, in the chart represent questions that help to classify the animals. Write the letters, G and H, in the correct boxes below to indicate the question they represent. Each letter can only be used once. [1]

Question	Letter
Does it lay eggs?	
Does it give birth to its young alive?	

(b) Based on the above information, state all the characteristics of Animal Y. [1]

32 The pictures below show how Arthur classified some animals.

Group J	Group K
	



(a) Write suitable headings for Group J and Group K. [1]

Group J: _____
 Group K: _____

(b) (i) What kind of outer covering do the animals in Group J have? [1]

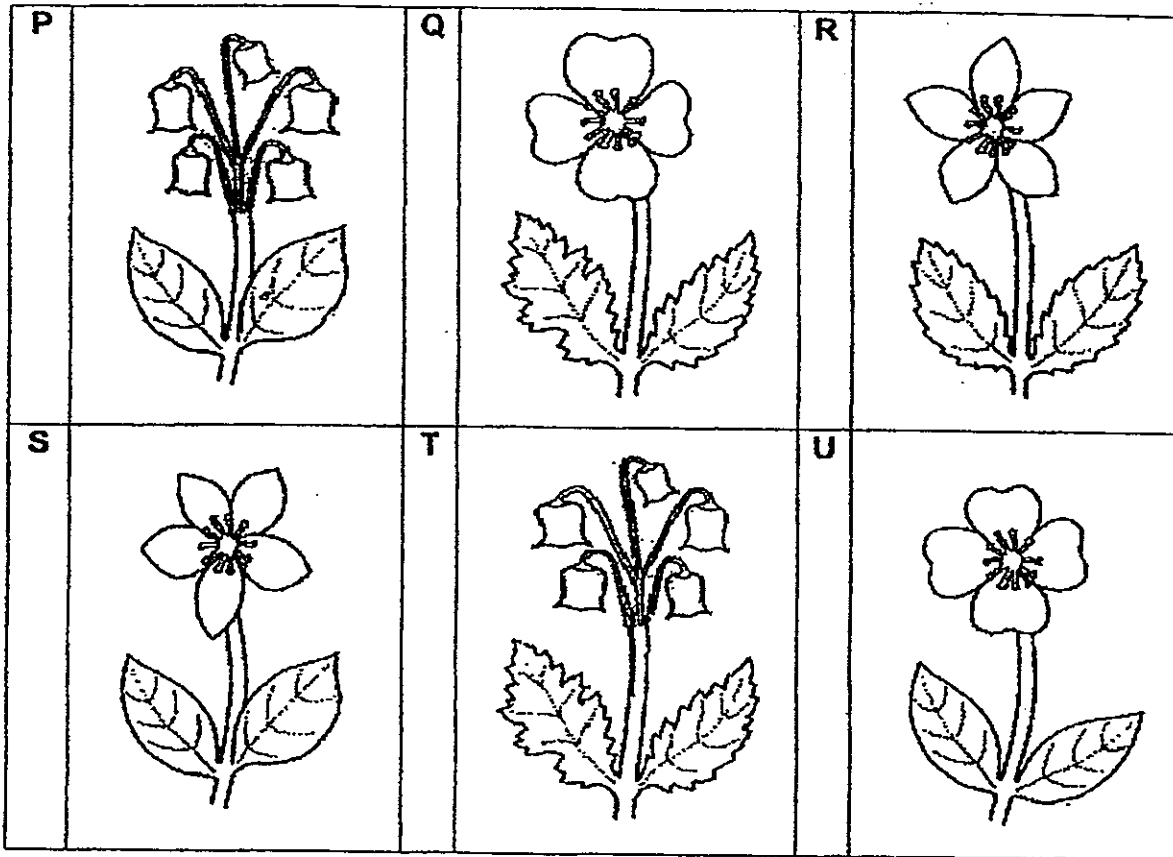
(ii) State one use of the outer covering of the animals in Group J. [1]

(c) Arthur reclassified the animals into 2 other groups as shown below.

Group L	Group M
	

State the characteristic which was used to regroup the animals. [1]

33 The diagram below shows the various plants with pink flowers that Ivy saw in the garden.



(a) Ivy wants to sort them into groups. Suggest two ways to sort these plants into two groups. [2]

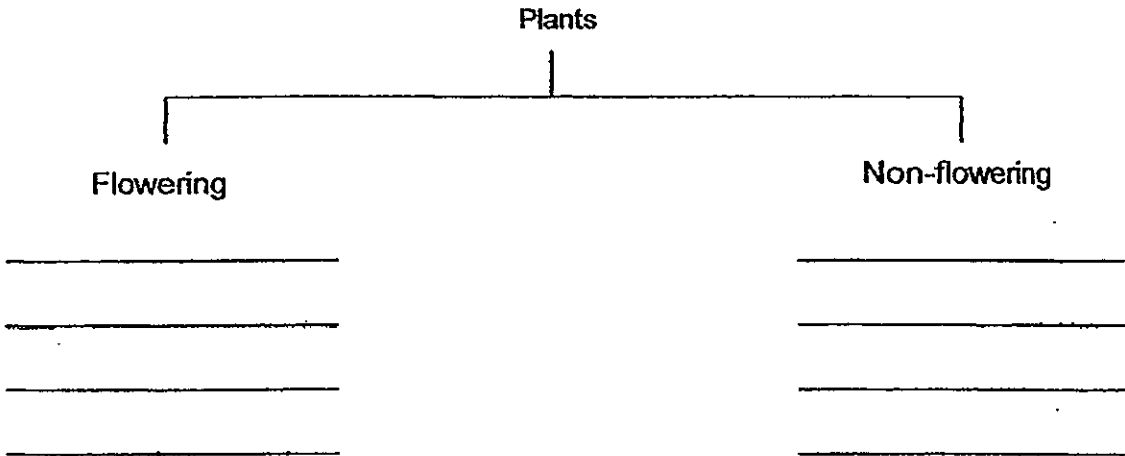
Suggestion 1: _____

Suggestion 2: _____

(b) Mrs Ong's favourite plant has flowers in groups and leaves with jagged edges. Which plant (P, Q, R, S, T or U) is Mrs Ong's favourite plant? [1]

(a) Complete the classification table below by placing the plants into the two groups. [2]

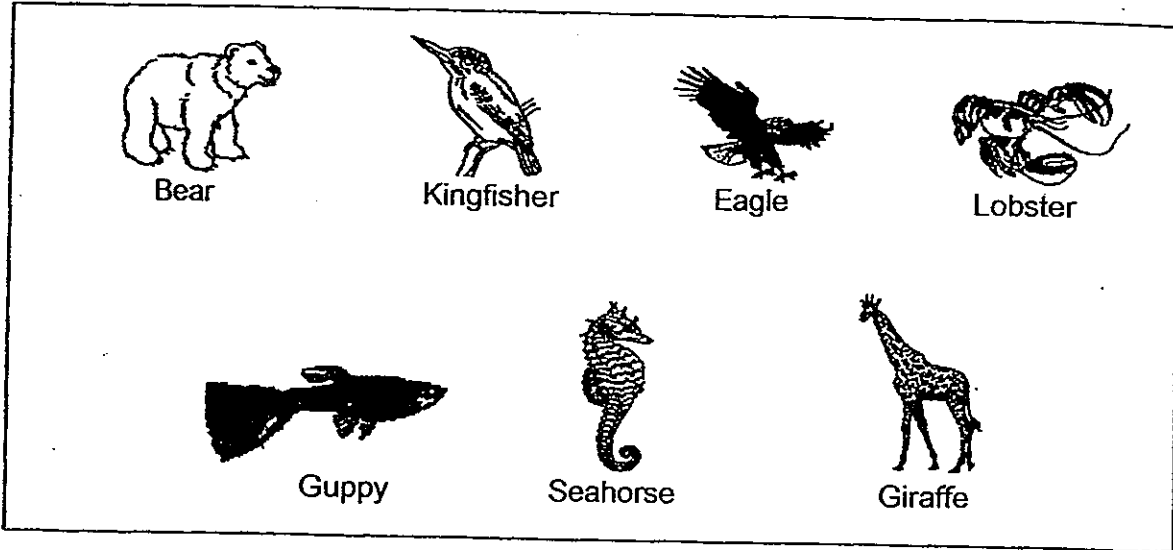
Fern	Orchid	Ixora	Rose	Morning Glory
------	--------	-------	------	---------------



(b) Under which sub-heading should grass be categorised? [1]

--

The diagram below shows different types of animals.



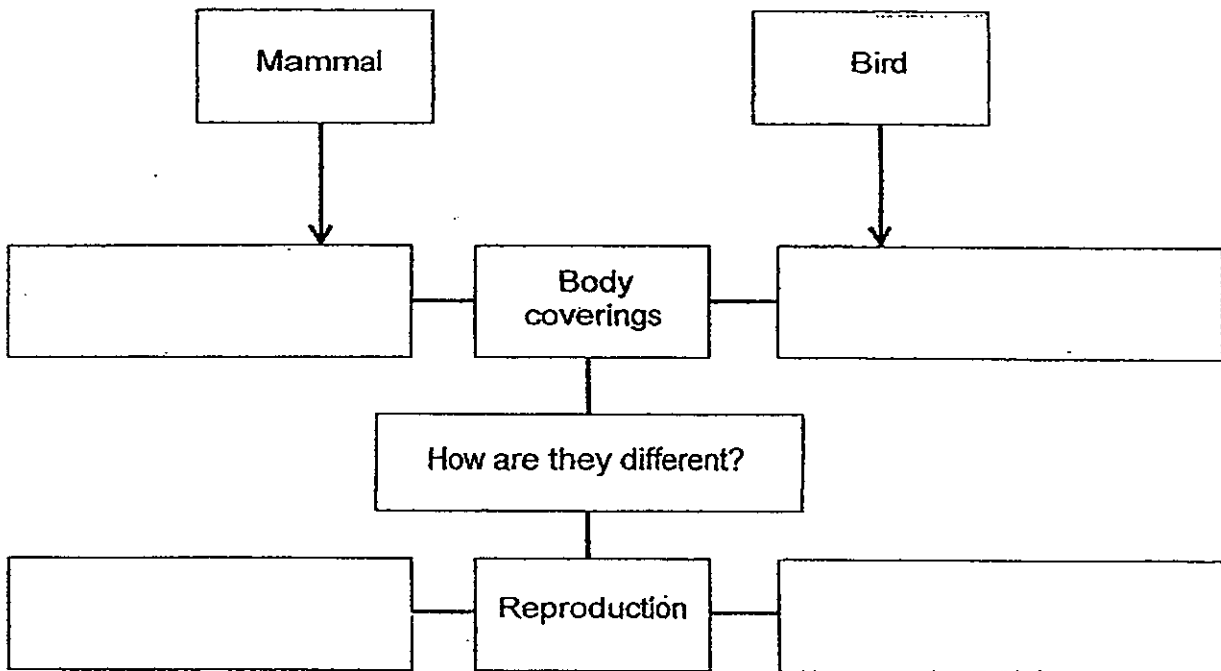
(a) Fill the classification table below with the animal names given above. [2]

Outer coverings			
Scales	Feathers	Y	Shell
		Pony	

(b) Give a suitable heading for 'Y'. [1]

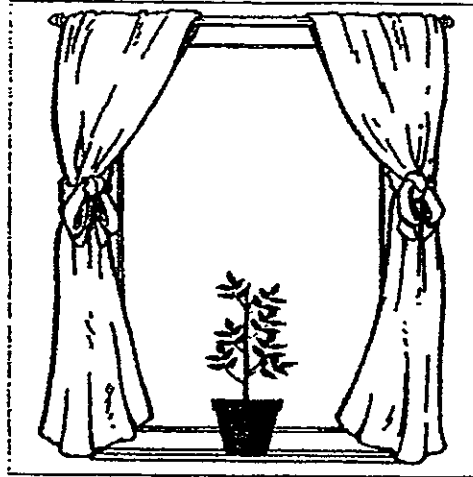
The flowchart below compares mammals and birds.

- (a) Fill in the boxes below with suitable words to show how mammals and birds are different. [2]



- (b) A bat can fly like a bird but it is not a bird. Which group of animal does the bat belong to? Give a reason for your answer. [1]

- 37 Matthew put a plant near his window and observed it. He measured and recorded the plant's height over six weeks.



Week	Height (cm)
1	12
2	18
3	24
4	34
5	?
6	54

- (a) Which characteristic of living things does the plant show? [1]
- _____
- _____
- (b) What does the plant need to survive? [1]
- _____
- (c) Using the results of Matthew's experiment, what would be the height of the plant in Week 5? [1]
- The height of the plant in Week 5 would be _____ cm.

--

38 The table below shows the characteristics of four animals W, X, Y and Z.

Animal	Number of legs				Wings	Feelers
	0	2	4	6		
W			✓			
X				✓		✓
Y		✓			✓	
Z	✓					

Put a tick (✓) in the correct box for each of the following statements.

[2]

Statements	True	False	Not possible to tell
Animal W is likely to be a mammal.			
Animal X is likely to be an insect.			
Animal Y is likely to be a bird.			
Animal Z is likely to be a fish.			

39 Study the classification table below.

Animals		
W	X	Y
Shark Seahorse	Squirrel Panda	Dragonfly Grasshopper

(a) What are the most suitable headings for each group of animals?

[3]

W	X	Y

(b) In which group can a cow be categorised under?

[1]

--

ANSWER SHEET

EXAM PAPER 2013

SCHOOL : ANGLO-CHINESE SCHOOL (JUNIOR)

SUBJECT : PRIMARY 3 SCIENCE

TERM : SA1

Q1	Q2	Q3	Q4	Q5	Q6	Q7	Q8	Q9	Q10	Q11	Q12	Q13	Q14	Q15	Q16	Q17
3	3	1	4	2	3	2	1	4	3	2	3	2	2	4	2	2

Q18	Q19	Q20	Q21	Q22	Q23	Q24	Q25
3	2	4	4	3	1	4	4

Section B

Q26

- a) Both of them can fly
- b) Thing Q can move by itself, while thing R cannot move by itself.
Thing Q can reproduce while thing R cannot reproduce

Q27

- a) Group A animals give birth to young alive, while Group B lays eggs
- b) The male peacock can attract the female peacock so that it can reproduce
- c) The clownfish has an outer covering of scales while the peacock has a outer covering of feathers

Q28

- a) R: Utensils
S: Stationery
- b) Group R

Q29

- a) Meat eater

b) Living things need food

Q30

a) The fruits in Group H are oval shaped

b) Group G

c) The fruits have the same shape

Q31

a)

Question	Letter
Does it lay eggs?	H
Does it give birth to its young plant	G

b) Animal Y does not have gills, lays eggs and does not fly

Q32

a) J: Birds

K: Insects

b) i) feathers

ii) To keep them warm

c) Can fly and cannot fly

Q33

a) Plants grow singly and in clusters

Jagged edged and smooth edged plants

b) Mrs Ong's favourite plant is T

Q34

a) Flowering : Rose, Ixora, Orchid, Morning glory

Non-flowering: Fern

b) Flowering plants

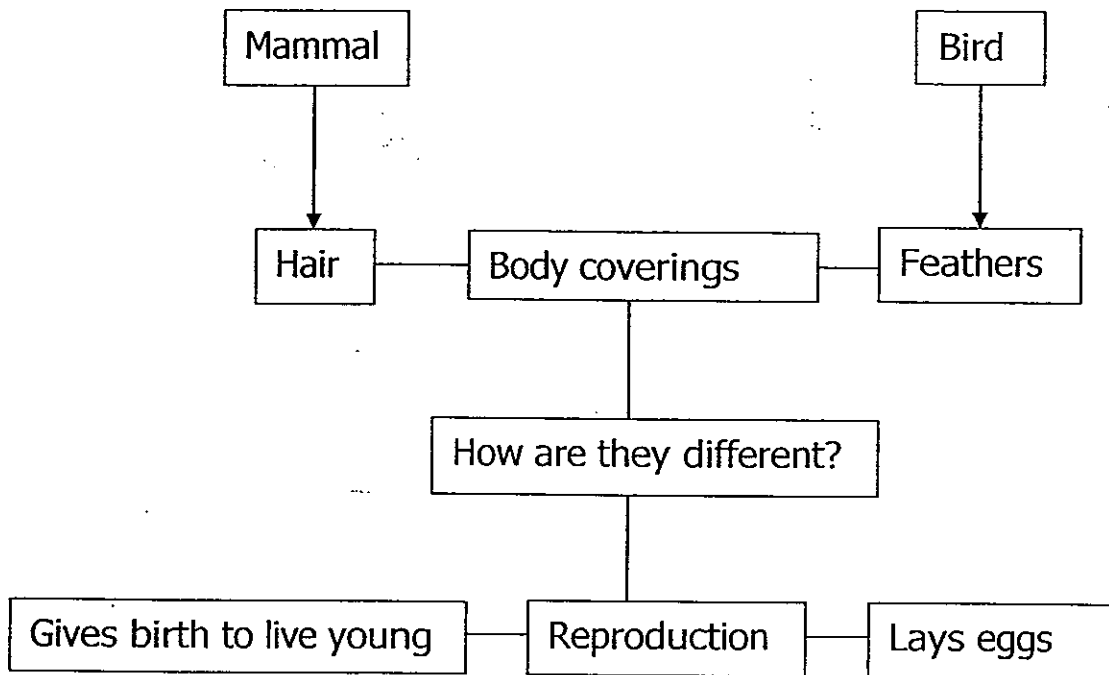
Q35

a)

Outer coverings			
Scales	Feathers	Y	Shell
Guppy	Kingfisher	Pony	Lobster
Seahorse	Eagle	Giraffe	
		Bear	

b) Hair

Q36)



b) Mammal. As a bat gives birth to young alive

Q37

- a) Living things grow
- b) The plant needs air, food, water and sunlight to survive
- c) 44

Q38

Statements	true	false	Not possible to tell
Animal W is likely to be a mammal	√		√
Animal X is likely to be an insect	√		
Animal Y is likely to be a bird	√		√
Animal Z is likely to be a fish	√		√

Q39

- a) W: fishes
X: Mammals
Y: Insects
- b) Group X

