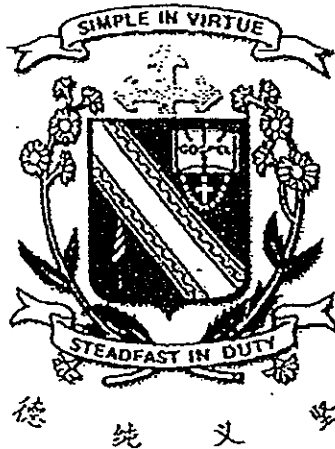


Name: _____ ()

Class : Primary 3 _____

CHIJ ST NICHOLAS GIRLS' SCHOOL



Primary 3

Semestral Assessment One

SCIENCE

BOOKLET A

15 May 2013

Total Time for Booklets A and B: 1 h 45 min

30 Questions

60 Marks

Do not open this booklet until you are told to do so.

Follow all instructions carefully.

Answer all questions.

This booklet consists of 17 printed pages.

Section A : (30 x 2 MARKS)

For each question from 1 to 30, 4 options are given. One of them is the correct answer. Make your choice (1, 2, 3 or 4). Shade your answer on the Optical Answer Sheet.

1. Which one of the following groups is classified correctly?

	Living Things	Non-living Things
(1)	cow	balsam seed
(2)	wooden table	chair
(3)	coconut tree	flowerpot
(4)	dried leaf	vase

2. The table below shows the characteristics of plants A, B, C and D.

Characteristic	Plants			
	A	B	C	D
Does the plant live on land?	Yes	Yes	No	Yes
Are the fruits poisonous?	No	No	No	Yes
Do the flowers grow singly?	No	Yes	Yes	No

Based on the information given in the table above, which one of the following statements about plants A, B, C and D is true?

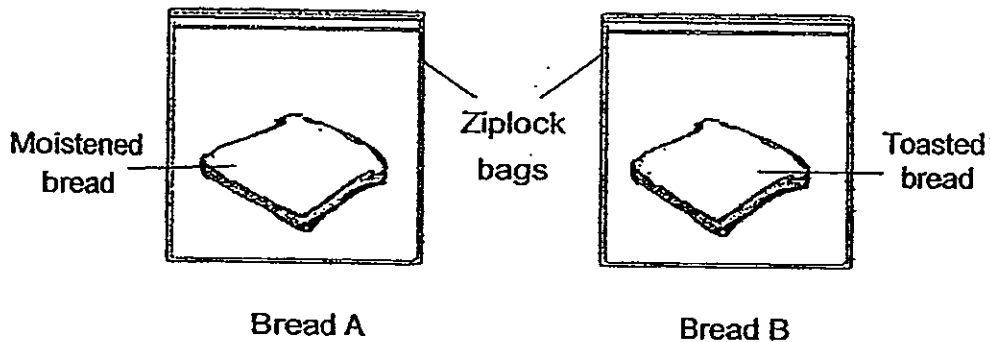
- (1) Plant A bears poisonous fruits and the flowers grow singly.
- (2) Plant B bears poisonous fruits and the flowers grow singly.
- (3) Plant C is not a land plant and it bears non-poisonous fruits.
- (4) Plant D bears non-poisonous fruits and it does not grow on land.

3. The diagram below shows the leaves of a mimosa plant folding up after being touched.



This shows that living things _____.

- (1) can grow
 - (2) can reproduce
 - (3) need air, food and water
 - (4) can respond to changes around them
4. Mori removed 2 slices of bread, A and B from a single loaf. She sprinkled some water on A only and toasted B. She put them in Ziplock bags and left the 2 slices of bread in a dark corner of the kitchen.

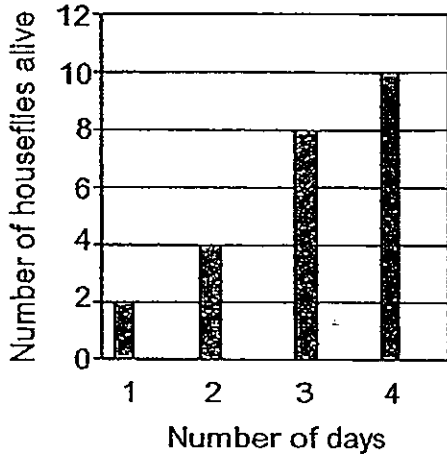


Which one of the following observations would Mori most probably make after 1 week?

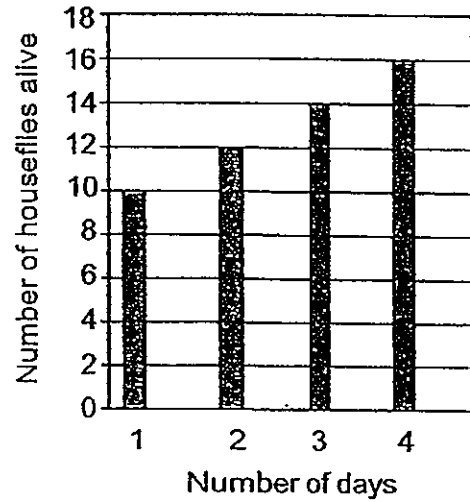
- (1) Mould is growing on bread A and B.
- (2) Mould starts to grow on bread A only.
- (3) Mould starts to grow on bread B only.
- (4) No mould is growing on bread A and B.

Gary put 10 houseflies, some slices of banana and some water into an empty jam jar. He then screwed on the lid tightly. Which one of the following graphs best represents the number of live houseflies in the jar over the next four days?

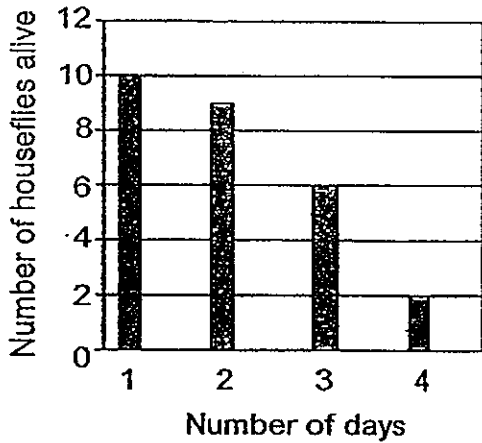
(1)



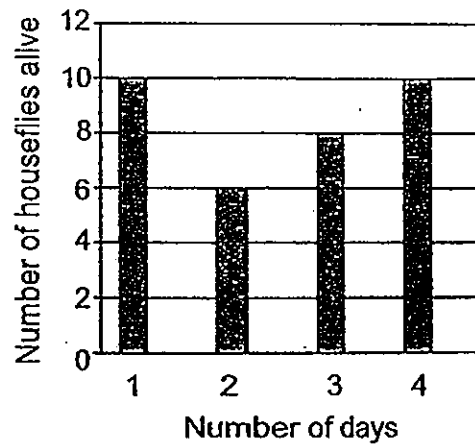
(2)



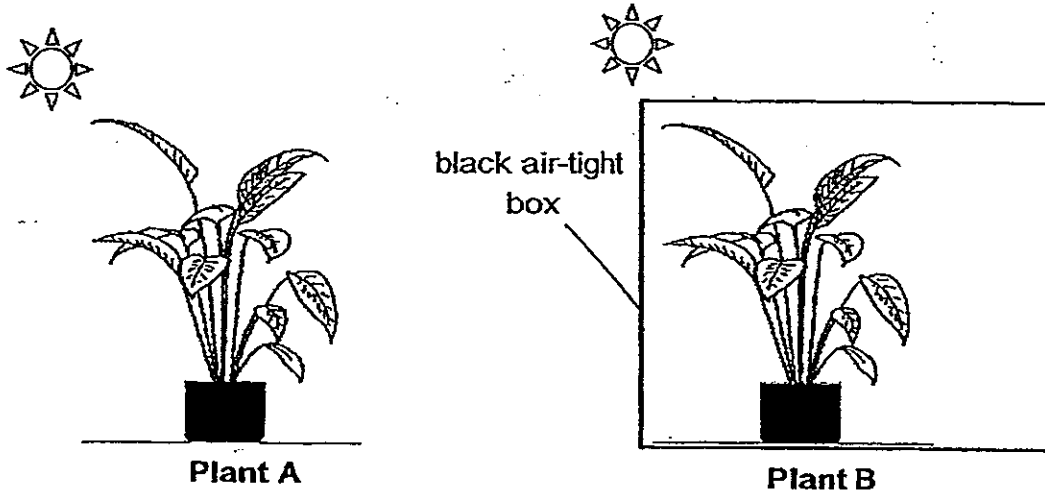
(3)



(4)

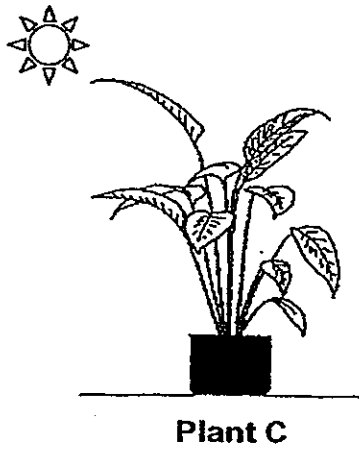


6. 4 similar plants, A, B, C and D, are given different conditions as shown in the diagram below.



Plant A
Amount of water given – 50ml
Location plant is placed - garden

Plant B
Amount of water given – 50ml
Location plant is placed - garden



Plant C
Amount of water given – 0ml
Location plant is placed - garden



Plant D
Amount of water given – 50ml
Location plant is placed – dark room

In which of the above set-ups will the plant survive the best?

- (1) A
- (2) B
- (3) C
- (4) D

7. Which of the following statements are true about the staghorn fern?

- A It is a flowering plant.
- B It reproduces by spores.
- C It is an example of fungi.
- D It can make its own food.

- (1) A and C only
- (2) B and D only
- (3) A, B and D only
- (4) B, C and D only

8. Four pupils, Abi, Ben, Cleo and Dan, made the following statements about living things.

- Abi Living things do not increase in size as they grow.
- Ben Living things will respond to all changes around them.
- Cleo All living things need food, sunlight and water to survive.
- Dan All living things reproduce so that their kind will continue to exist.

Which of the above pupils has/have made the incorrect statements about living things?

- (1) Abi only
- (2) Abi and Cleo only
- (3) Cleo and Dan only
- (4) Abi, Ben and Cleo only

9. Which one of the following statements best describes the similarity between fungi and bacteria?

- (1) They can make their own food.
- (2) They need air, food and water to survive.
- (3) They can be seen only with the help of a microscope.
- (4) They are able to move from place to place by themselves.

10. Alice saw an organism. She wanted to find out whether it is an insect. Which of the following actions would enable her to do so?

- A Measure its length.
- B Find out whether it has wings.
- C Count the number of legs it has.
- D Find out whether it has three body parts.

- (1) A and B only
- (2) C and D only
- (3) B, C and D only
- (4) A, B, C and D

11. Which of the following statements are true of all mammals?

- A They have hair or fur.
- B The adult mammals give birth to live young.
- C The female mammals produce milk to feed their young.

- (1) A and B only
- (2) B and C only
- (3) A and C only
- (4) A, B and C

12. Which one of the following animals has the same kind of outer body covering as the peacock?

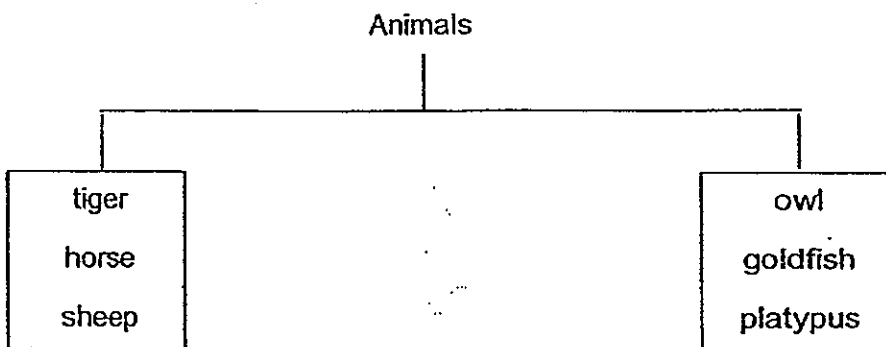
- (1) bear
- (2) seal
- (3) eagle
- (4) whale

13. Osman tested four different types of chemicals, L, M, N, P, on some insects including insect Q. The table below shows the effects of the different chemicals on the insects.

Chemical	Effect on insect Q	Effect on other insects
L	Attracts	None
M	Attracts	Kills
N	Kills	Kills
P	Kills	None

Which one of the above chemicals, L, M, N or P, should Osman use to reduce the number of insect Q only?

- (1) L
 - (2) M
 - (3) N
 - (4) P
14. Some animals are classified in a chart as shown below.



These animals are grouped according to _____.

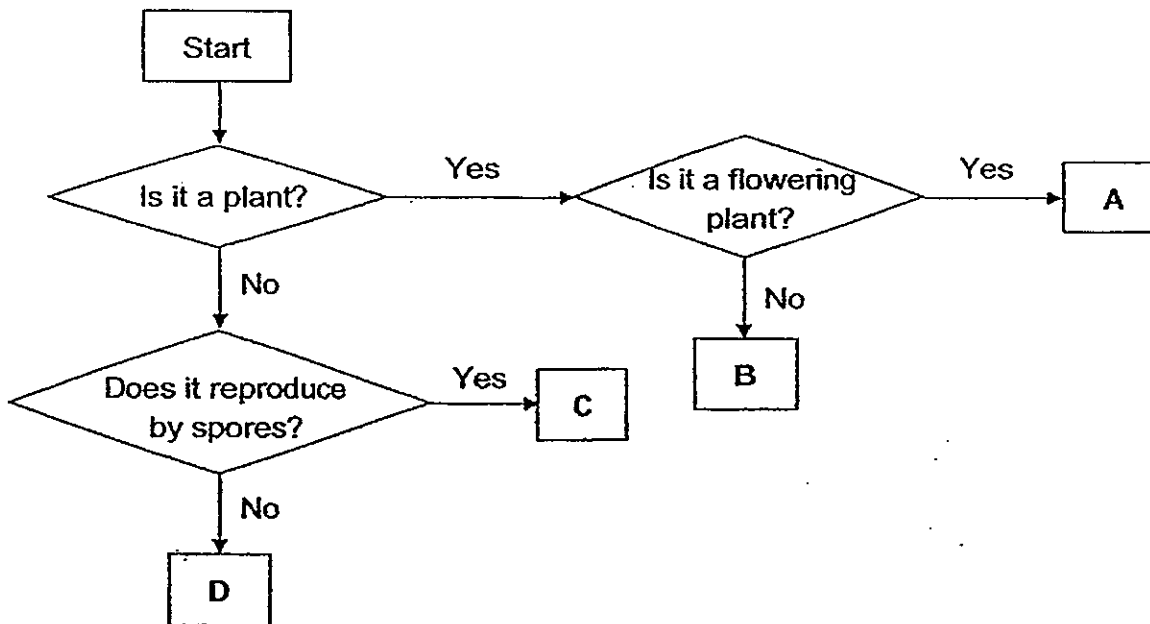
- (1) the way they move
- (2) how they reproduce
- (3) their body coverings
- (4) whether they can respond to changes

15. Which of the following correctly explain the importance of the fins to a fish?

- A Fins help to protect the fish's body.
- B Fins enable a fish to swim in water.
- C Fins help a fish to keep its balance.
- D Fins enable a fish to breathe in water.

- (1) A and D only
- (2) B and C only
- (3) A, B and C only
- (4) A, B, C and D

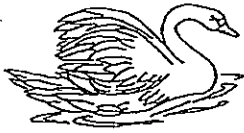
16. Study the flowchart below.



Based on the above flowchart, which one of the following best represents A, B, C and D?

	A	B	C	D
(1)	Orchid	Moss	Fem	Hibiscus
(2)	Rose	Mushroom	Bacteria	Toadstool
(3)	Conifer	Fem	Bracket fungus	Bacteria
(4)	Hibiscus	Conifer	Toadstool	Giraffe

17. Yati had to classify four animals shown below.



swan



bat

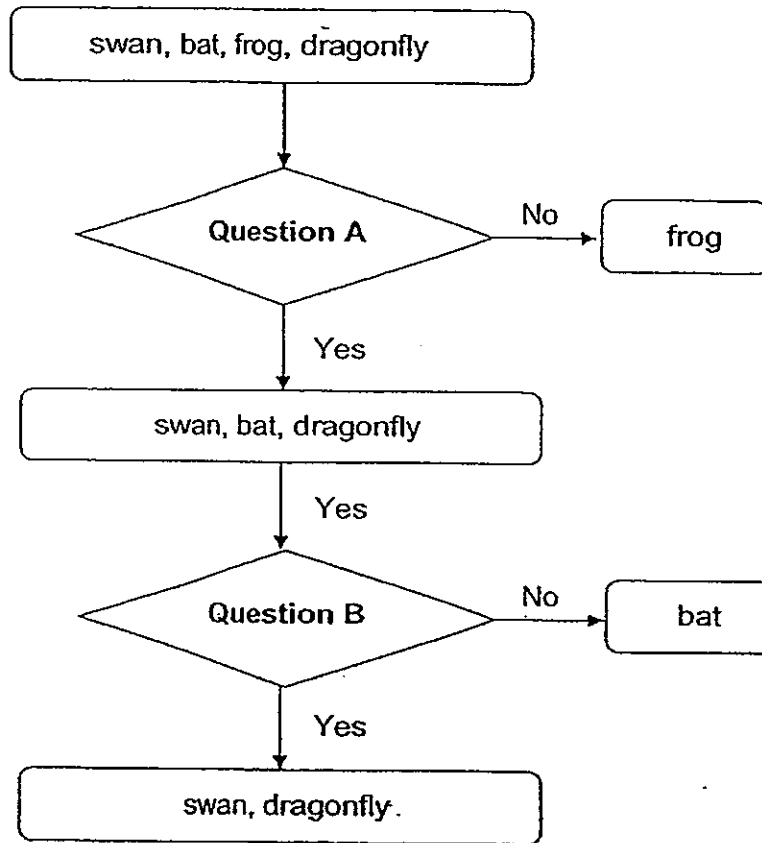


frog



dragonfly

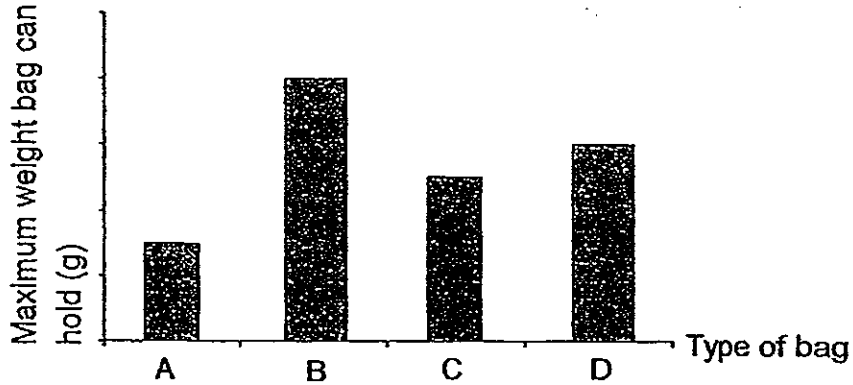
She classified them with the help of the flowchart below.



Which one of the following correctly represents question A and B in the above flowchart?

	Question A	Question B
(1)	Does it have wings?	Does it lay eggs?
(2)	Does it reproduce?	Does it have wings?
(3)	Does it have wings?	Does it take care of its young?
(4)	Does it lay eggs?	Does it take care of its young?

18. The bar graph below shows the maximum weight four different types of bags, A, B, C and D, can hold before tearing.



Based on the graph above, which one of the following statements about the bags is true?

- (1) Bag B is the hardest.
 - (2) Bag A is the least flexible.
 - (3) Bag C is harder than bag A.
 - (4) Bag D is stronger than bag C.
19. The table below shows the results of the scratch test for four different materials A, B, C and D.

Results
A can scratch B, C and D.
B cannot scratch C.
C can scratch D.

Based on the results given above, what materials are A, B, C and D most likely to be?

	Rubber	Wood	Metal	Plastic
(1)	C	B	A	D
(2)	B	A	D	C
(3)	D	C	A	B
(4)	D	A	B	C

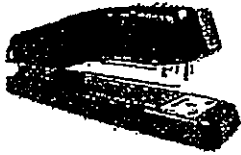
20. Which one of the following objects is made from only one material?



pencil



eraser



stapler



iron nail

- (1) pencil and stapler only
- (2) eraser and iron nail only
- (3) pencil, eraser and iron nail only
- (4) eraser, pencil, stapler and iron nail

21. Rubber bands are commonly used by teachers to tie stacks of worksheets together. Which one of the following properties of a rubber band best explains why it is used?

- (1) It is not hard.
- (2) It breaks easily.
- (3) It stretches easily.
- (4) It can float on water.

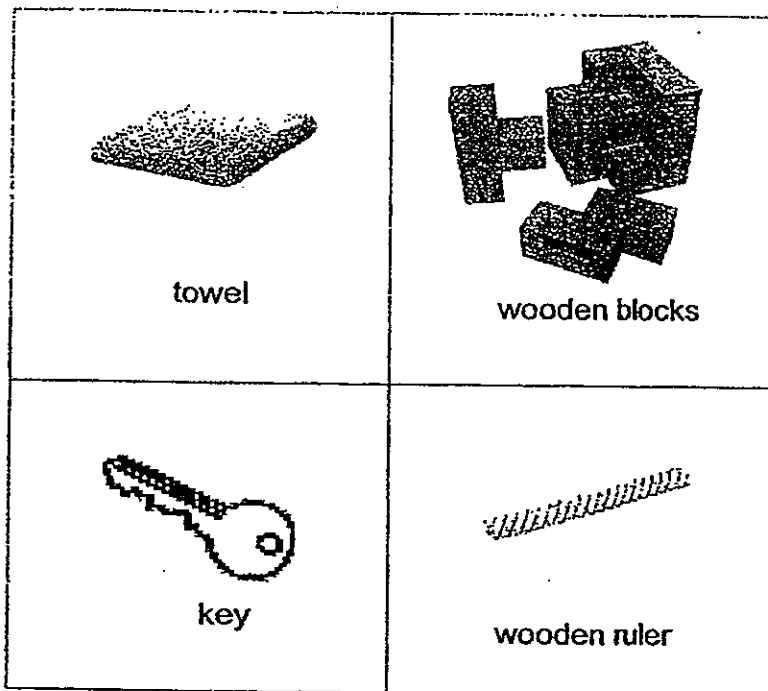
22. Study the table given below.

Group A	Group B
ceramic mug	disposable plastic fork
metal spoon	wooden toothpick
canvas bag	styrofoam cup

The things in group A and B are classified based on whether they are _____

- (1) strong
- (2) flexible
- (3) waterproof
- (4) transparent

23. Karen was blindfolded and asked to guess the object using her sense of touch. She described the object to be strong and flexible. What can the object be?



- (1) key
- (2) towel
- (3) wooden ruler
- (4) wooden blocks

24. Elite Company makes raincoats for sale.



raincoat

The table below shows the properties of 4 materials P, Q, R and S.

Materials	Property			
	Waterproof	Transparent	Flexible	Light
P		✓	✓	
Q	✓	✓		
R	✓		✓	✓
S		✓	✓	✓

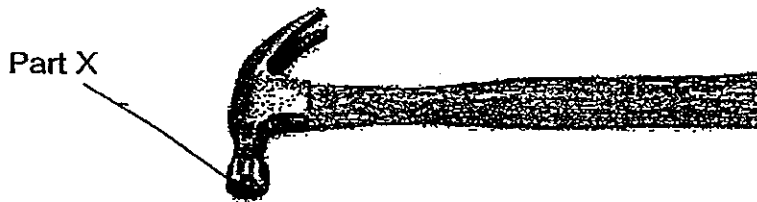
Which one of the above materials, P, Q, R or S, should Elite Company choose to make their raincoats?

- (1) P
- (2) Q
- (3) R
- (4) S

25. Which one of the following materials is not suitable for making a pencil case?

- (1) glass
- (2) metal
- (3) fabric
- (4) plastic

26. The picture below shows a hammer.



Part X of the hammer is usually made of metal. Which one of the following statements best explains why metal is used to make part X?

- (1) It is waterproof.
- (2) It does not rust easily.
- (3) It is strong and does not break easily.
- (4) It is hard and can be used to scratch other materials.

27. Which one of the following groups of materials is obtained from living things only?

- (1) wood, paper, silk, soil
- (2) glass, plastic, cotton, sand
- (3) silk, natural rubber, cotton, wool
- (4) plastic, wood, natural rubber, iron

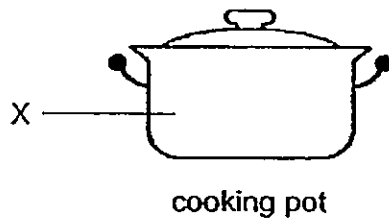
28. The properties of 4 different bags, A, B, C and D, are shown in the table below.

Property \ Bag	Bag A	Bag B	Bag C	Bag D
Strong	X	X	√	√
Light	√	X	X	√
Waterproof	√	√	√	X

Which one of the above bags, A, B, C or D, should Francis choose for a 5-day hike in a dense forest in Malaysia?

- (1) Bag A
- (2) Bag B
- (3) Bag C
- (4) Bag D

29. The diagram below shows a cooking pot.



Which one of the following materials would not be suitable for making part X of the cooking pot shown above?

- (1) steel
- (2) glass
- (3) wood
- (4) ceramics

30. The diagram below shows a roll of paper towel. The paper towel is used in the kitchen to wipe spills.



Which of the following properties of paper is/are important for it to be used for making the paper towel?

- A Paper is flexible.
 - B Paper absorbs liquid.
 - C Paper can be dyed to other colours.
 - D Paper allows some light to pass through.
- (1) A only
- (2) A and B only
- (3) B and C only
- (4) C and D only

End of booklet A

Name: _____ ()

Class: Primary 3 _____

CHIJ ST NICHOLAS GIRLS' SCHOOL



Primary 3

Semestral Assessment One

SCIENCE

BOOKLET B

15 May 2013

Total Time for Booklets A and B: 1 h 45 min

14 Questions
40 Marks

Do not open this booklet until you are told to do so.
Follow all instructions carefully.

This booklet consists of 11 printed pages.

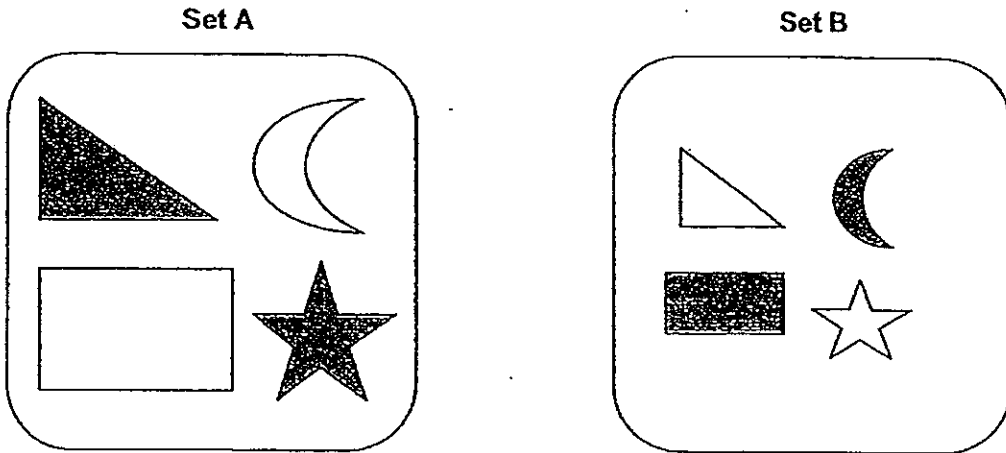
Booklet A	60
Booklet B	40
Total	

Parent's Signature/Date

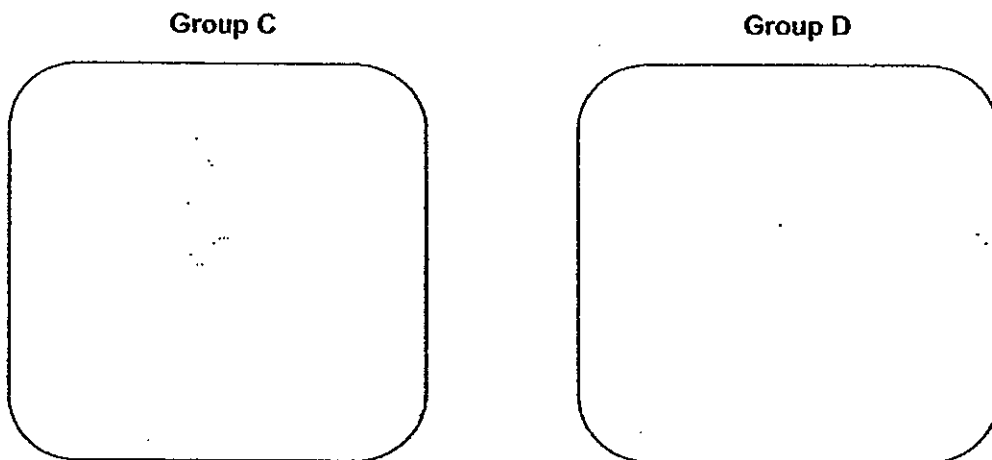
Section B : (40 marks)

For questions 31 to 44, write your answers in this booklet. The number of marks available is shown in the bracket [] at the end of each question or part question.

31. Look at the pictures given below carefully.



- (a) The objects in sets A and B are grouped according to _____ [1]
- (b) Using the same objects above, draw to show how you would group them in C and D, using another characteristic, such that there is an equal number of objects in each group. [2]



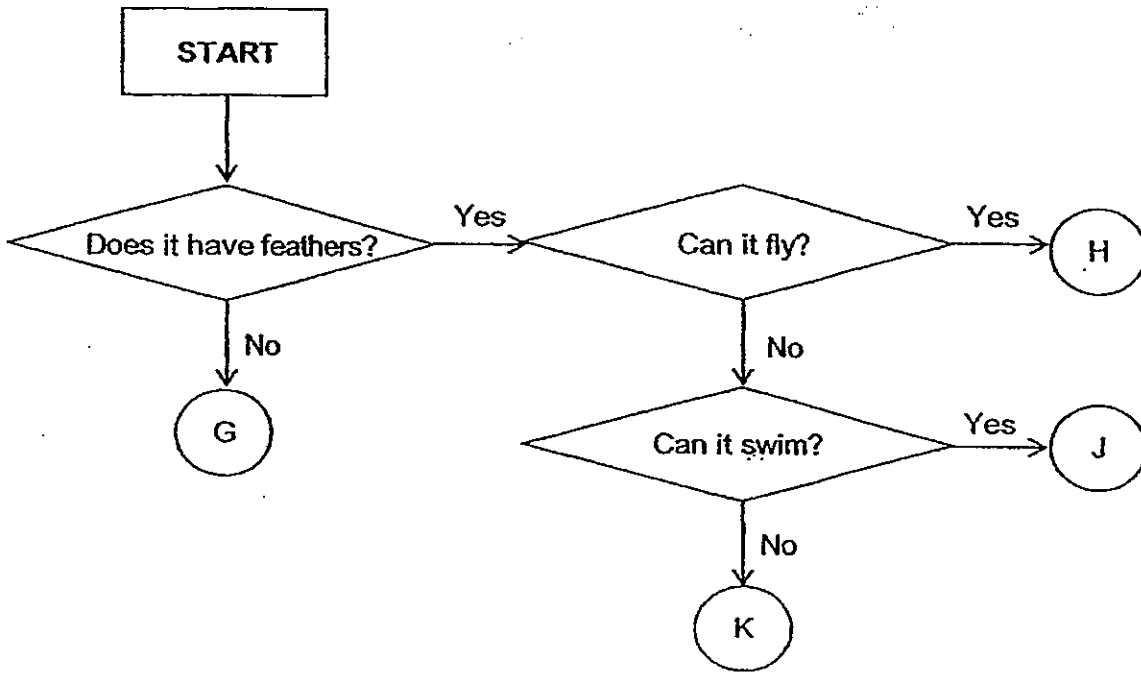
(c) Based on your answer in (b), write down the headings for groups C and D.

Group C: _____ [½]

Group D: _____ [½]



32. The flowchart below shows how four different animals, G, H, J and K, are classified.



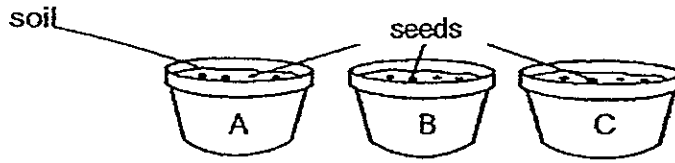
Based on the flowchart above, identify the four animals, G, H, J and K, using the names provided in the box below. [2]

bee	ostrich	penguin	parrot
-----	---------	---------	--------

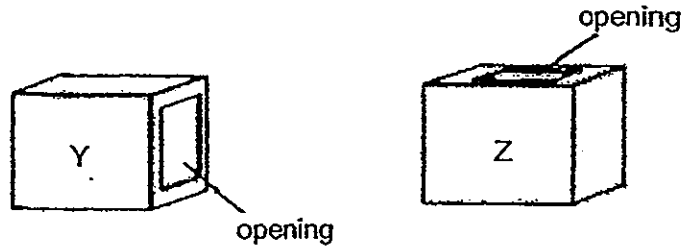
- (a) Animal G: _____
- (b) Animal H: _____
- (c) Animal J: _____
- (d) Animal K: _____



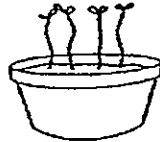
33. Shuling planted an equal number of seeds in pots A, B and C as shown below.



She had two boxes Y and Z as shown below.

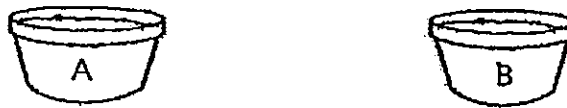


She placed pot A into box Y and pot B into box Z. She left pot C in the open and the plants in pot C grew as shown below.



Three days later, she took out pots A and B from the boxes and she observed the plants growing.

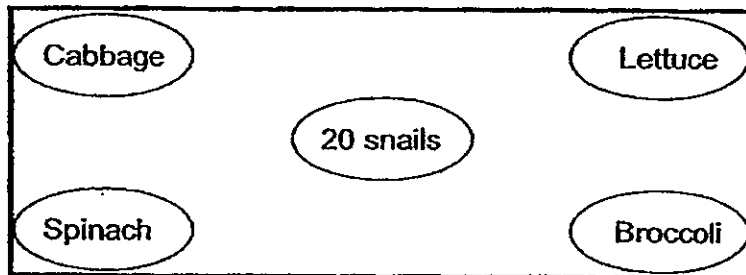
(a) Draw in the diagram below to show how the plants in pots A and B would have grown. [2]



(b) Based on your drawing in (a), explain why the plants in pot A were growing that way. [1]



34. Sarah wanted to find out the type of vegetables snails like to eat the most. She placed the same number of cabbage, lettuce, spinach and broccoli in each corner of a glass tank before placing 20 snails of the same species in the centre of the glass tank as shown below.



She checked all the plants daily over 4 days and recorded the number of snails she found on these plants in a table as shown below.

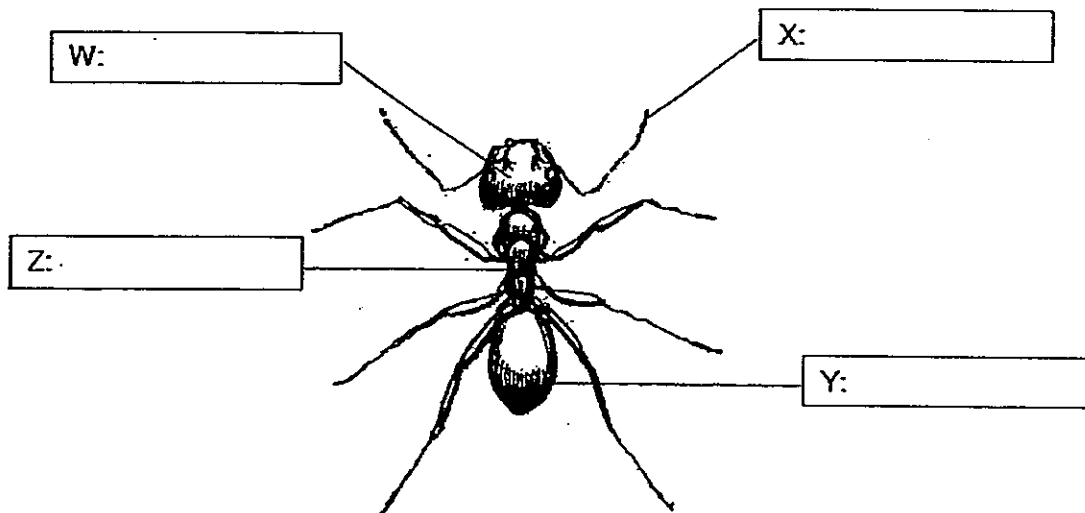
Day	Number of snails found			
	Cabbage	Lettuce	Spinach	Broccoli
Day 1	1	1	2	3
Day 2	3	2	8	7
Day 3	3	2	8	7
Day 4	3	2	8	7

- (a) Based on the results in the above table, state 2 vegetables that the snails seem to like the most. [1]

- (b) If all the vegetables were removed from the glass tank except cabbage, how do you think the 20 snails will respond? Explain your answer. [2]



35. The picture below shows an ant. Write down the names of the parts labeled W, X, Y and Z. [2]



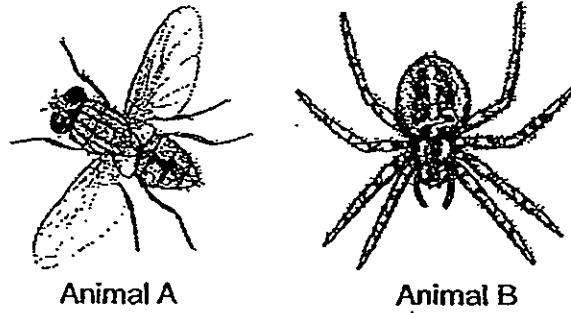
36. Michael observed the height of a bean plant over 5 weeks and he recorded his observations in the table below.

Week	1	2	3	4	5
Height (cm)	2	5	8	?	14
Mass (g)	3	7	12	17	23

- (a) Suggest what the height of the bean plant would be at the end of week 4? [1]
- _____
- (b) Michael's observation shows that living things can _____ [1]
- (c) Based on the above data, state how the mass of the plant changes over time. [1]
- _____



37. The diagram below shows two animals A and B.

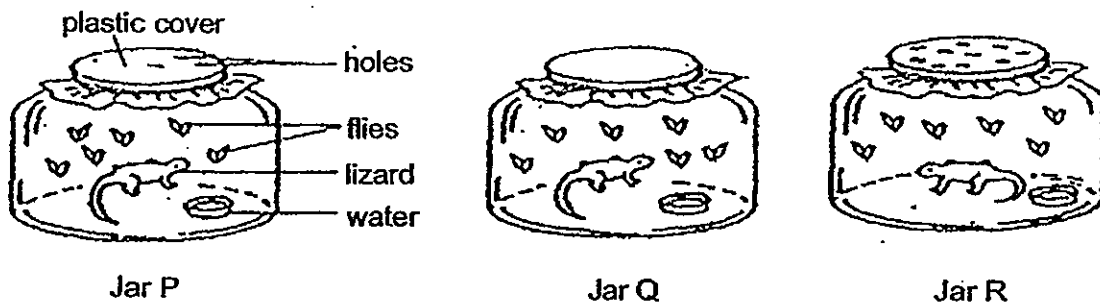


Based on what is observable in the diagram above, state two differences in physical characteristics between animal A and B. (Do not mention size, eyes and feelers.) [2]

- (a) _____

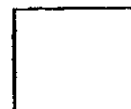
- (b) _____

38. Shuning kept three similar lizards in three separate jars P, Q and R as shown below.

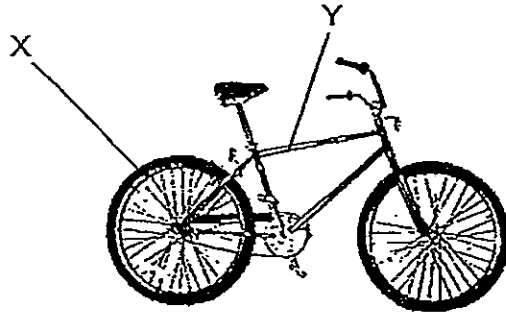


(a) Which is the most suitable way of keeping the lizard? [1]

(b) Explain your answer in (a). [2]



39. The diagram below shows a bicycle.



(a) Suggest what materials can be used to make part X and Y of the bicycle. [2]

Part X: _____ Part Y: _____

(b) State a property of the material that you have chosen to make part Y and explain why it is suitable. [2]

40. The table below shows the properties of 4 different materials, W, X, Y and Z. A tick (✓) indicates the presence of the property.

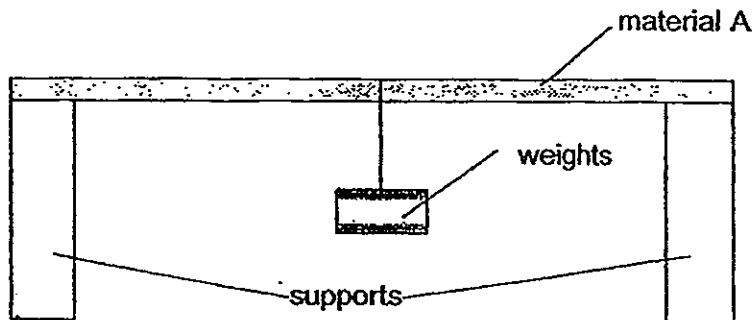
Properties	Material			
	W	X	Y	Z
It looks shiny when polished.	✓			
It breaks easily when hit with a hammer.		✓	✓	
It is waterproof.	✓	✓		
It can float on water.				✓
It is transparent.			✓	✓

(a) Based on the table above, how is material W different from the other materials? [1]

(b) Based on the table above, suggest which material, W, X, Y or Z, is most suitable for making a key. [1]

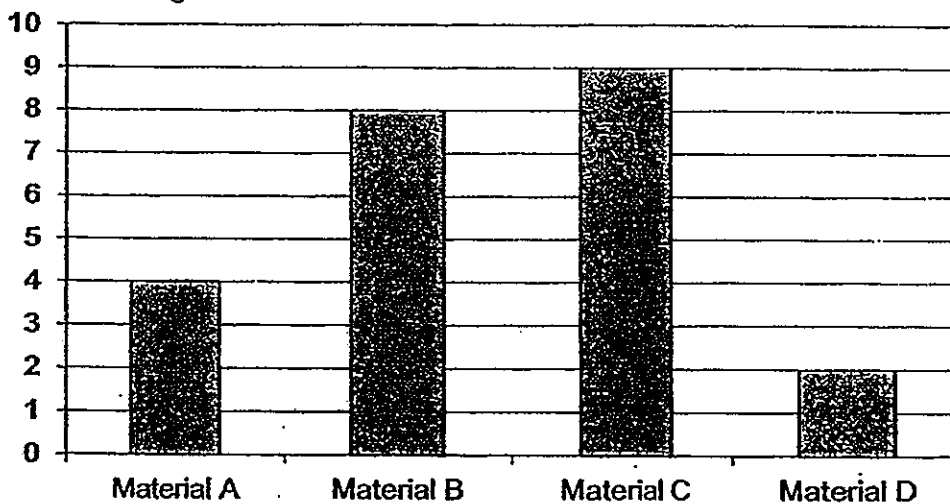


41. Jaylit placed a piece of material A over two supports as shown in the diagram below. Weights of the same mass were then hung in the middle of the material until it broke. He then repeated the experiment using materials B, C and D.



The bar graph below shows the number of weights it took to break each piece of material.

Number of weights



- (a) Which material, A, B, C or D, should Jaylit choose to make a table? [1]

- (b) Explain your answer in (a). [2]



42. The diagram below shows a pair of spectacles. The part marked X is made of glass.



(a) Suggest another material suitable for making part X. [1]

(b) What is an important characteristic of the material suggested in (a) that makes it more suitable than glass for making part X? [1]

43. Ginny had just finished swimming and wanted a bag to contain her swimming costume. She was offered 2 bags of the same mass by her friend as shown below.



plastic bag



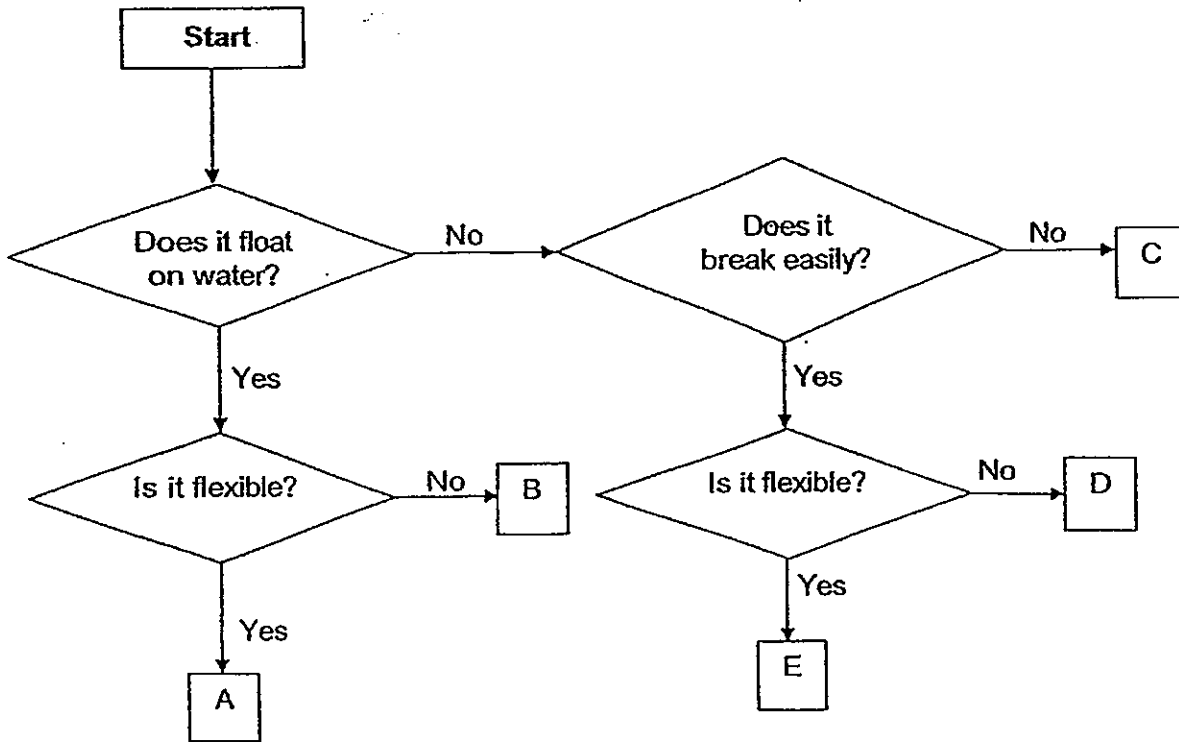
paper bag

(a) Which bag should Ginny choose? [1]

(b) State a property of the bag chosen in (a) and explain why it is better able to meet Ginny's needs. [2]



44. Study the flowchart given below.



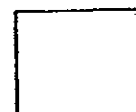
(a) Based on the above flowchart, state a similarity and a difference between objects A and E. [2]

Similarity: _____

Difference: _____

(b) Using information from the above flowchart, identify the letters, A, B, C, D or E, that best represents each of the following objects. Use each letter once only. [2]

Object	Letter
Screw	
Mirror	
Plastic straw	
Plastic bottle cap	



ANSWER SHEET

EXAM PAPER 2013

SCHOOL : CHIJ ST NICHOLAS GIRLS' SCHOOL

SUBJECT : PRIMARY 3 SCIENCE

TERM : SA1

Q1	Q2	Q3	Q4	Q5	Q6	Q7	Q8	Q9	Q10	Q11	Q12	Q13	Q14	Q15	Q16	Q17
3	3	4	2	3	1	2	4	2	2	3	3	4	2	2	4	1

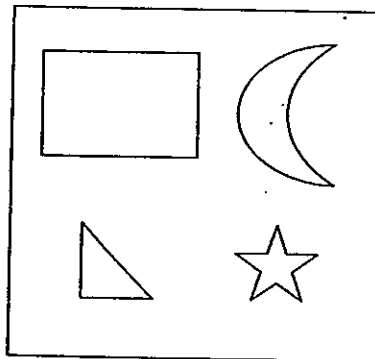
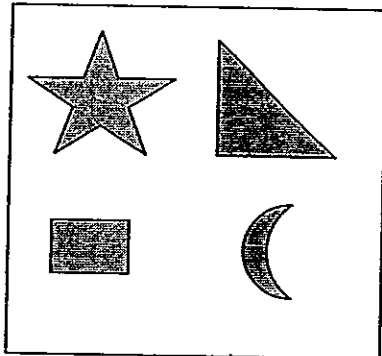
Q18	Q19	Q20	Q21	Q22	Q23	Q24	Q25	Q26	Q27	Q28	Q29	Q30
4	3	2	3	1	2	3	1	3	3	3	3	2

Section B

Q31

a) size

b)



c) C: Shapes with colour

D: Shapes without any colour

Q32

a) G: Bee

b) H: Parrot

- c) J: Penguin
- d) K: Ostrich

Q33

a)



b) Plants need sunlight to grow, as Plant A is not getting enough sunlight, it will grow towards the sunlight

Q34

- a) Spinach and Broccoli
- b) All twenty snails will eat the cabbage, as snails need food to survive

Q35) W: Head

Z: Torso

X: Feelers

Y: Abdomen

Q36

- a) 11cm
- b) grow
- c) As the plant grows taller, more weight is added

Q37

- a) Animal A has six legs while Animal B has eight legs.
- b) Animal A has wings while Animal B has no wings

Q38

- a) Jar R is the most suitable
- b) There is more air coming in as there are more holes than Jar P and Q.

Q39

- a) X: Rubber, Y: metal
- b) Part Y need to be strong and durable to hold the weight of the cyclist. Metal is a strong material and thus it is suitable.

Q40

- a) Material W look shiny when polished while the other material don't look shiny when polished
- b) Material W

Q41

- a) Material C
- b) C holds the most number of weights, showing that C is the strongest.

Q42

- a) Clear Plastic
- b) Plastic cannot break as easily as glass, and thus is more suitable

Q43

- a) The plastic Bag
- b) The plastic bag is waterproof. Ginny's swimming clothes is wet and when she put it into the plastic bag, water will not drip out

Q44

- a) Similarity: Both A and E are flexible
Difference: A floats in water while E does not
- b)

Object	Letter
Screw	C
Mirror	D
Plastic straw	A
Plastic bottle cap	B

