



SERANGOON JUNIOR COLLEGE
JC2 PRELIMINARY EXAMINATION 2017
Higher 1

GEOGRAPHY

8813/01

Paper 1

Wednesday
13 Sept 2017
3 hours

Additional materials : Writing Paper
1 Insert
World outline map

READ THESE INSTRUCTIONS FIRST

Write your name and civics group on all the work you hand in.
Write in dark blue or black pen on both sides of the paper.
You may use a soft pencil for any diagrams, graphs, or rough working.
Do not use staples, paper clips, highlighter, glue or correction fluid.

Answer **four** questions in total.

Section A

Answer Question 1.

Section B

Answer Question 2.

Section C

Answer **two** questions, each from a different theme.

The Insert contains all the Resources referred to in the question paper.
You should make reference to appropriate examples studied in the field or the classroom, even where such examples are not superficially requested by the question.
Diagrams and sketch maps should be drawn whenever they serve to illustrate an answer.
The world outline map may be annotated and handed in with relevant answers.
You are reminded of the need for good English and clear presentation in your answers.

At the end of the examination, fasten all your work securely together.
The number of marks is given in brackets [] at the end of each question or part question.

Section A

Theme 3 : Geographical Investigation

- 1 A group of university students wanted to examine living conditions of slums in Lagos (Nigeria). For their investigation, they chose two slum neighbourhoods, Makoko and Ijora Oloye. They carried out their fieldwork investigations between June and October 2010.

The study population consisted of individuals above 15 years and living permanently in Makoko and Ijora Oloye. Sampling techniques were used to select households across different socio-economic background in the two study locations. A questionnaire survey was used to interview the respondents of the sample households to seek information on both quantifiable and non-quantifiable factors, which included migration, household annual income, and living and health conditions. The questionnaire surveys were administered via face-to-face interviews.

Resource 1 shows the location of the two slum neighbourhoods, Makoko and Ijora Oloye. Resource 2 features selected demographic characteristics. Resource 3 shows the perceptions of living conditions in the two slum neighbourhoods.

- (a) With reference to Resources 1 and 2, outline the challenges associated with selecting these two slum neighbourhoods for the investigation. [4]
- (b) Using Resource 2 and your own knowledge, suggest **three** reasons why the questionnaire surveys were administered via face-to-face interviews. [6]
- (c) Explain why Resource 2 **may not** be an accurate representation of the demographic characteristics in both slum neighbourhoods. [4]
- (d) Suggest **one** limitation of the data representation method shown in Resource 3. Propose and sketch an alternative data representation method to represent the different perceptions of challenges of living in the two slums. [5]
- (e) Beyond questionnaire surveys, suggest other ways to collect data to investigate the living conditions in the two slums. [6]

Section B**Theme 1 : Climate Change and Flooding****Flooding in Cagayan de Oro city (Philippines)**

- 2** Resource 4 shows the flooded area and affected population of Cagayan de Oro city in the Philippines in December 2011. The city of Cagayan de Oro is located in the Mindanao Region of the Philippines. The Cagayan River flows into the Macajalar Bay passing through the city. On 16 December 2011, Tropical Storm Sendong passed through the region, an area seldom frequented by typhoons, causing massive flooding. Resource 5 shows land use along the Cagayan River. Resource 6 shows before and after the flooding satellite pictures of a stretch of the Cagayan River. Resource 7 shows a flood control project along a stretch of the Cagayan River.
- (a)** Using Resource 5, describe the locations worst affected by flooding. [3]
- (b)** With the help of Resources 5 and 6, show how river flooding has been promoted. [5]
- (c)** Suggest reasons, using Resource 5 and your own knowledge, why river flooding in the region will become more frequent and intense in future. [4]
- (d)** With reference to Resource 6, examine the effects of floods within the Cagayan River floodplain. [6]
- (e)** Assess the effectiveness of the flood alleviation measure depicted in Resource 7. [7]

Section C

Answer **two** questions from this section. **Either** Question 3 **or** Question 4 and **Either** Question 5 **or** Question 6.

Theme 1 : Climate Change and Flooding

- 3 (a) Explain why the ITCZ (inter tropical convergence zone) is important in the understanding of tropical climates. [9]
- (b) To what extent are the climatic effects of tropical monsoons different from that of tropical cyclones? [16]
- 4 (a) Explain **three** different types of evidence for past climate change. [9]
- (b) To what extent do you agree that it is easier to adapt to climate change than to mitigate against it? [16]

Theme 2 : Urban Change

- 5 (a) Explain how the issue of crowding **or** fear is produced in cities in countries at high levels of development. [9]
- (b) Assess the success of strategies used to try to mitigate the issue of either crowding **or** fear in the city. [16]
- 6 (a) Explain the urban issues affecting the aged community in countries at different levels of development. [9]
- (b) "Improving mobility in the city is the first step towards creating an age-friendly city." [16]
To what extent do you agree with the statement?

End of paper



SERANGOON JUNIOR COLLEGE
JC2 PRELIMINARY EXAMINATION 2017
Higher 1

GEOGRAPHY

8813/01

Paper 1
INSERT

Wednesday
13 Sept 2017
3 hours

READ THESE INSTRUCTIONS FIRST

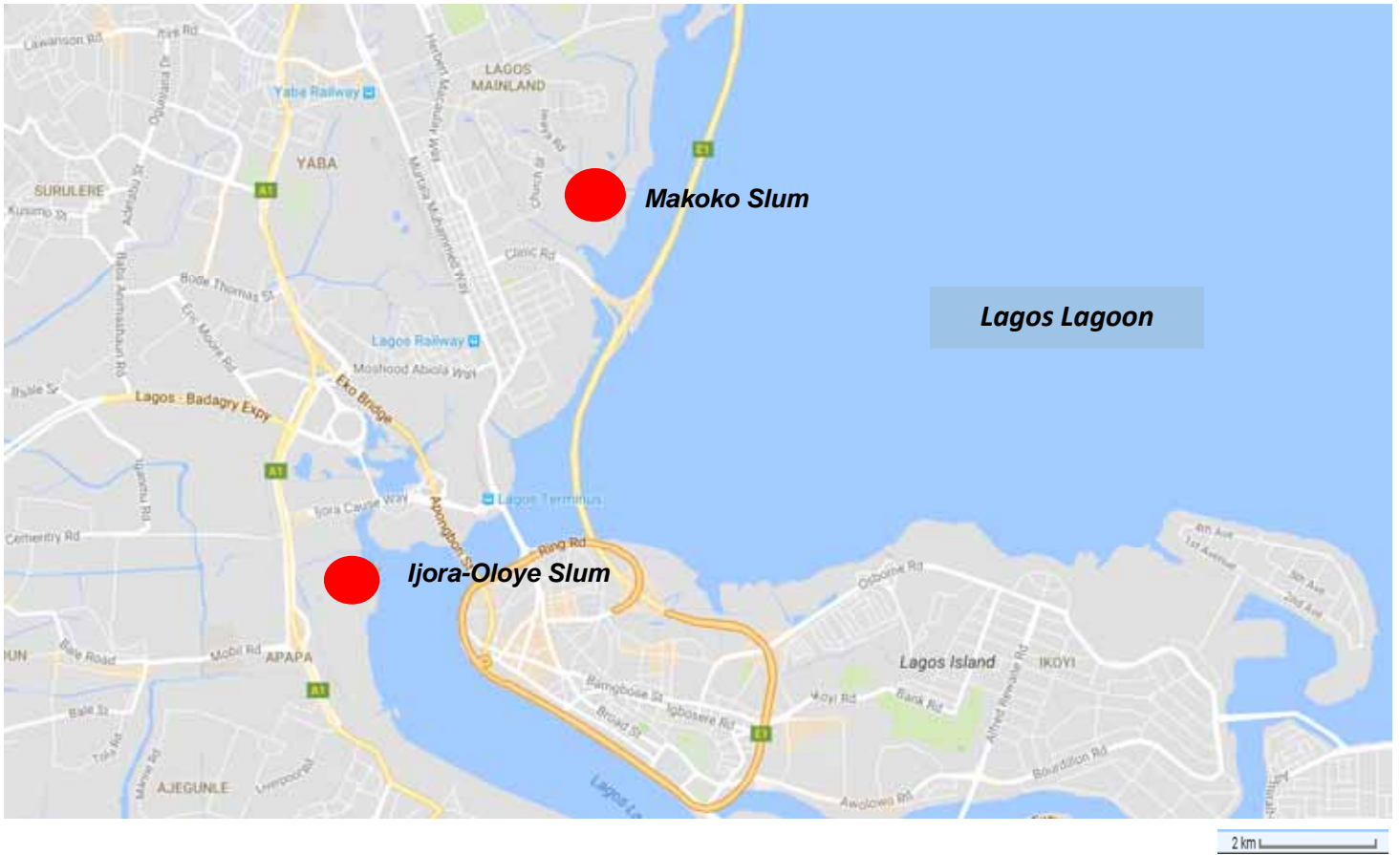
This insert contains all the Resources referred to in the questions.

This document consists of 7 printed pages.

[Turn over

Resource 1 for Question 1

Location of two slums in Lagos (Nigeria)



Resource 2 for Question 1

Selected Demographic characteristics of the respondents

Characteristics	Ijora-Oloye (n* = 805)	Makoko (n * =815)
Migrants (ie : not born in the slum neighbourhood)	45%	49%
Sex		
Male	43.2%	51.2%
Female	56.8%	48.8%
Ethnic Group		
Yoruba	92.7%	77.8%
Igbo	2.1%	15.3%
Hausa	2.4%	0.5%
Others	2.8%	6.4%
Annual household Income		
Less than USD 320	56.9%	3.4%
USD320 ≤USD 640	6.0%	2.3%
USD 640 ≤ USD 1,280	0.7%	0.9%
USD 1,280≤ USD 2,560	0.4%	0.5%
USD 2,560 ≤ USD 5,120	0.1%	0.2%
Don't know	1.1%	2%
No response	34.8%	90.7%
Education		
No formal schooling	22.2%	13.1%
Less than Primary school	4.1%	4%
Primary school completed	27.8%	24.7%
Secondary school completed	34.3%	46.3%
Post secondary school completed	6.3%	8.7%
Postgraduate degree	0.7%	1.3%
Quranic	3.5%	1%
No response	1.0%	1%

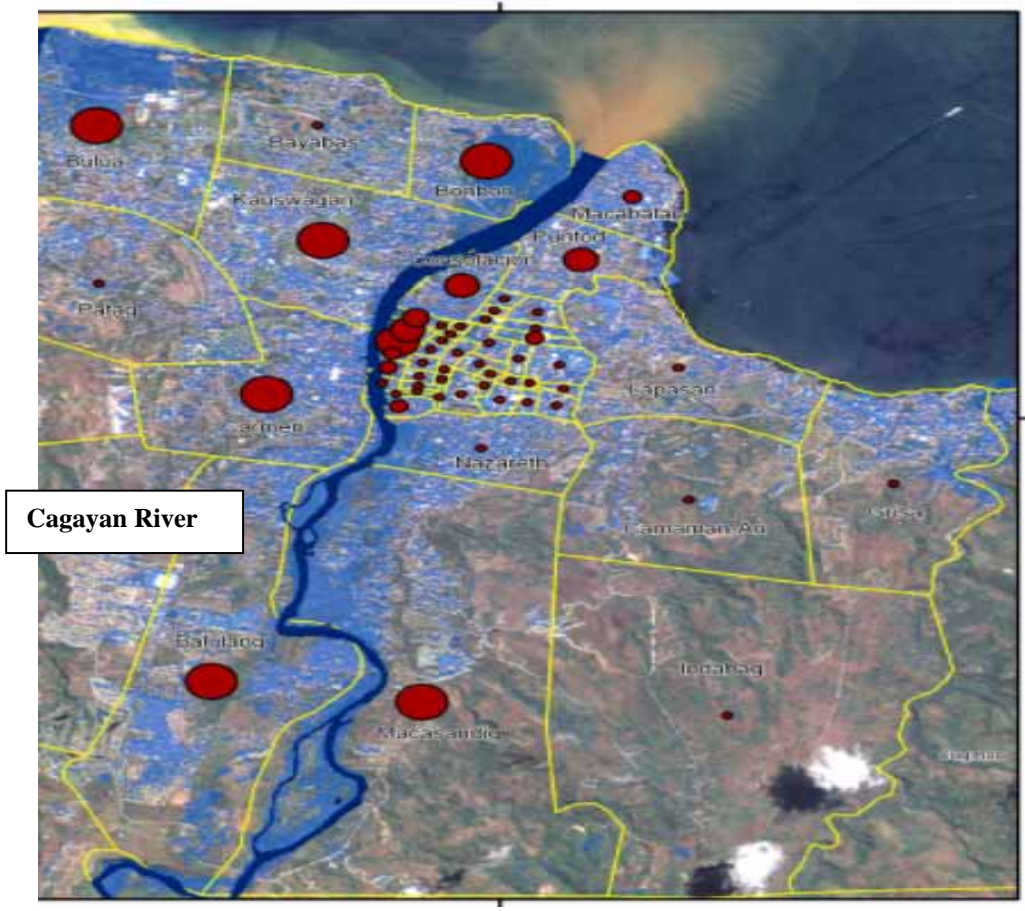
**n denotes sample size*

Resource 3 for Question 1**Challenges of living in a slum in Makoko and Ijora-Oloye**

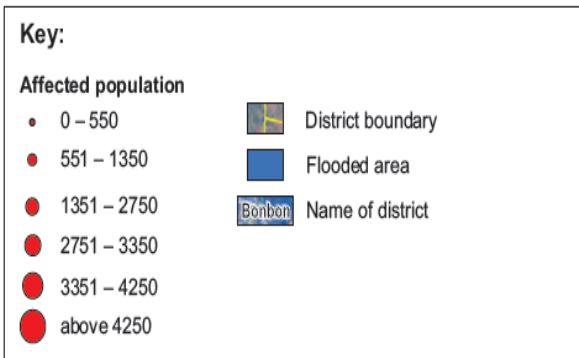
Challenges of living in a slum	Percentage of slum population
Unclean latrine facilities	54.4%
Perennial flood	30.1%
Unemployment	22.6%
Mosquitos	89.3%
Lack of electrical supply	63.2%
Extreme heat	55.7%

Resource 4 for Question 2

Flooded area and affected population in Cagayan de Oro city (Philippines), December 2011



Cagayan de Oro River basin



Resource 5 for Question 2
Land use along the Cagayan River



Resource 6 for Question 2
Before and after the flooding satellite pictures of a stretch of the Cagayan River



Resource 7 for Question 2
Flood control project along a stretch of the Cagayan River



End of Insert