



Pei Hwa Presbyterian Primary School

First Continual Assessment – 2011

Science

Primary 3

(Time: 1 hour 30 minutes)

Booklet A	/ 30
Booklet B	/ 20
Total	/ 50

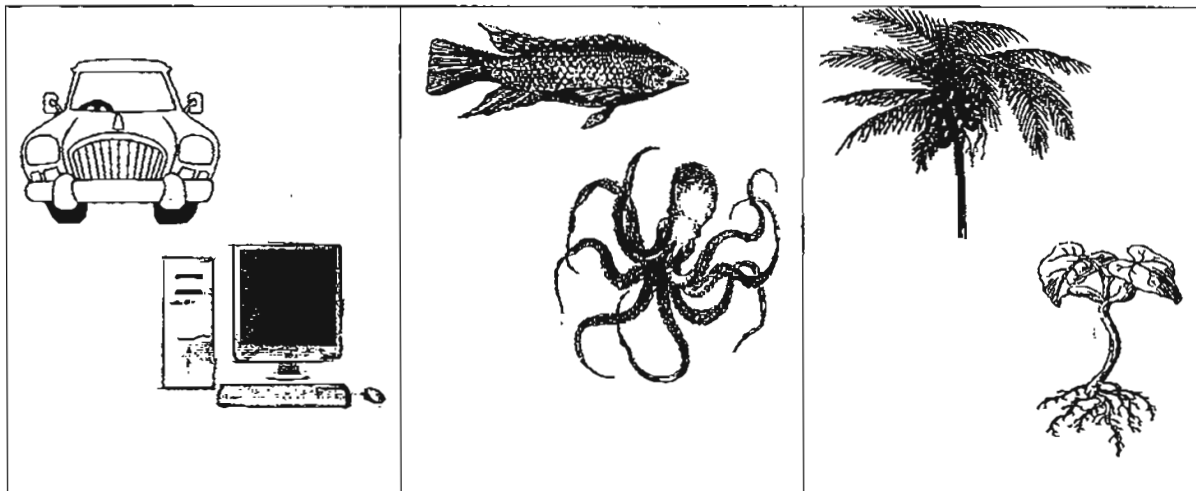
Name: _____ () Class: Responsibility ()

Date: _____ Parent's Signature: _____

BOOKLET A (15 × 2 = 30 MARKS)

For each question, from 1 to 15, four options are given. Only one of them is correct. Make your choice (1, 2, 3, or 4). Shade the correct oval (1, 2, 3, or 4) on the Optical Answer Sheet.

1 Which of the following groups of things need air, food and water to stay alive?



Group A

Group B

Group C

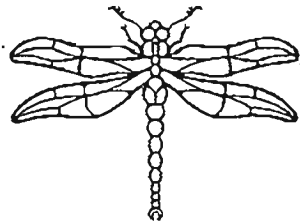
- (1) B only
- (2) A and B only
- (3) B and C only
- (4) A and C only

2 Which of the following observation(s) show(s) that plants can move their parts by themselves?

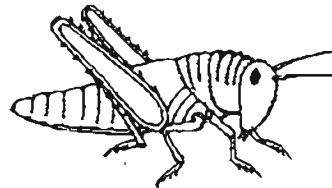
- A Young plants grow towards the direction of light.
- B The leaves of a tree sway when the wind blows.
- C The water lily opens its flowers during the day and closes them at night.

- (1) A only
- (2) B only
- (3) B and C only
- (4) A and C only

3 The diagrams below show a dragonfly and a grasshopper.



Dragonfly



Grasshopper

Both are similar in many ways. One such similarity is that each has

- (1) four legs
- (2) two antennae
- (3) two body parts
- (4) a soft outer covering

4 Which pair of animals breathes through its gills?

- (1) Bees and ants
- (2) Seahorses and dolphins
- (3) Goldfishes and lionfishes
- (4) Monkeys and elephants

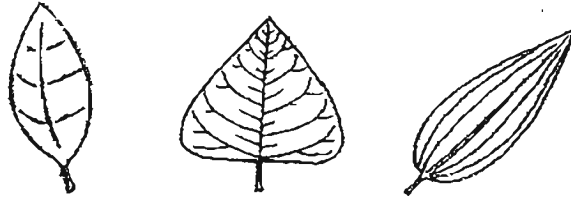
5 John observed 4 items M, N, O and P and recorded their characteristics in the table below. The tick indicates that the item has the described characteristic.

Items	Able to make food	Able to reproduce	Able to move from one place to another	Able to respond to changes
M				✓
N			✓	✓
O		✓	✓	✓
P	✓	✓	✓	✓

Based on the information above, how many non-living things are there in the classification table above?

- (1) 1
- (2) 2
- (3) 3
- (4) 4

6 The leaves in the group below are similar in some ways.



Which one of the following leaves can be put in the same group as the above?

(1)



(2)



(3)



(4)



7 Which of the following statements about a bee and a butterfly are false?

- A Both of them can fly.
- B Both of them have 8 legs.
- C Both of them reproduce by laying eggs.
- D Both of them have young that look like them.

- (1) A and B only
- (2) C and D only
- (3) B and D only
- (4) A and C only

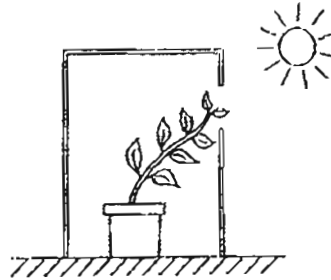
8 The table below shows the characteristics of 4 different animals, P, Q, R and S.

Animals	Has 4 legs	Body covered with fur	Use gills to breathe	Give birth to young alive
P	Yes	Yes	No	No
Q	No	No	No	No
R	No	No	Yes	No
S	No	No	Yes	Yes

Which one of the animals can be a guppy?

- (1) P
- (2) Q
- (3) R
- (4) S

9 The diagram below shows a plant that was left in a black box placed in a field.



Based on the picture, what does the experiment tell us? Plants need _____ to survive.

- (1) air
- (2) water
- (3) sunlight
- (4) reproduction

10 The table below shows the height of the green bean plant over 7 days.

Age(in days)	Height in centimeters (cm)
3	6
5	9
7	12

What can we conclude about the green bean plant from the data in the table above? It _____.

- (1) can reproduce
- (2) responds to changes
- (3) needs air, food and water to survive
- (4) increases its height by 3 cm every 2 days

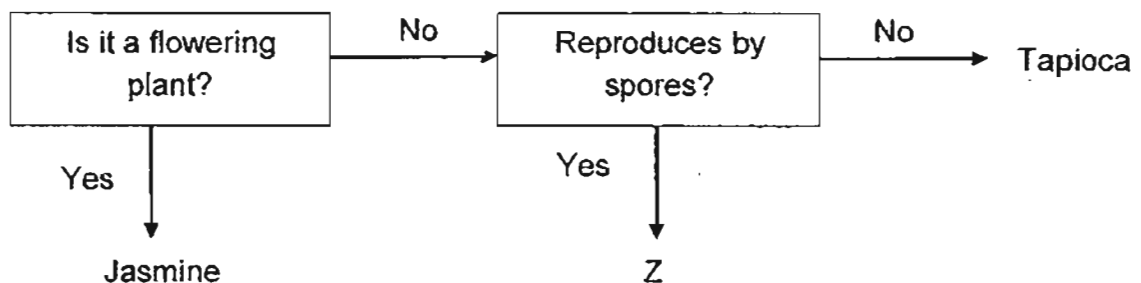
11 Study the classification table below.

Group A	Group B	Group C
Lion	Cow	Pig
Wolf	Giraffe	Bear
Alligator	Rabbit	Chicken

Which of the following gives the correct headings?

	Group A	Group B	Group C
(1)	Live on land and water	Live on land	Live on water
(2)	Have hair	Have scales	Have skin
(3)	Meat eaters	Plant eaters	Both meat and plant eaters
(4)	Have one young	Have a few young	Have many young

12 Study the flow chart below.



What could plant Z be?

- (1) Mimosa
- (2) Rain tree
- (3) Angsana Tree
- (4) Staghorn Fern

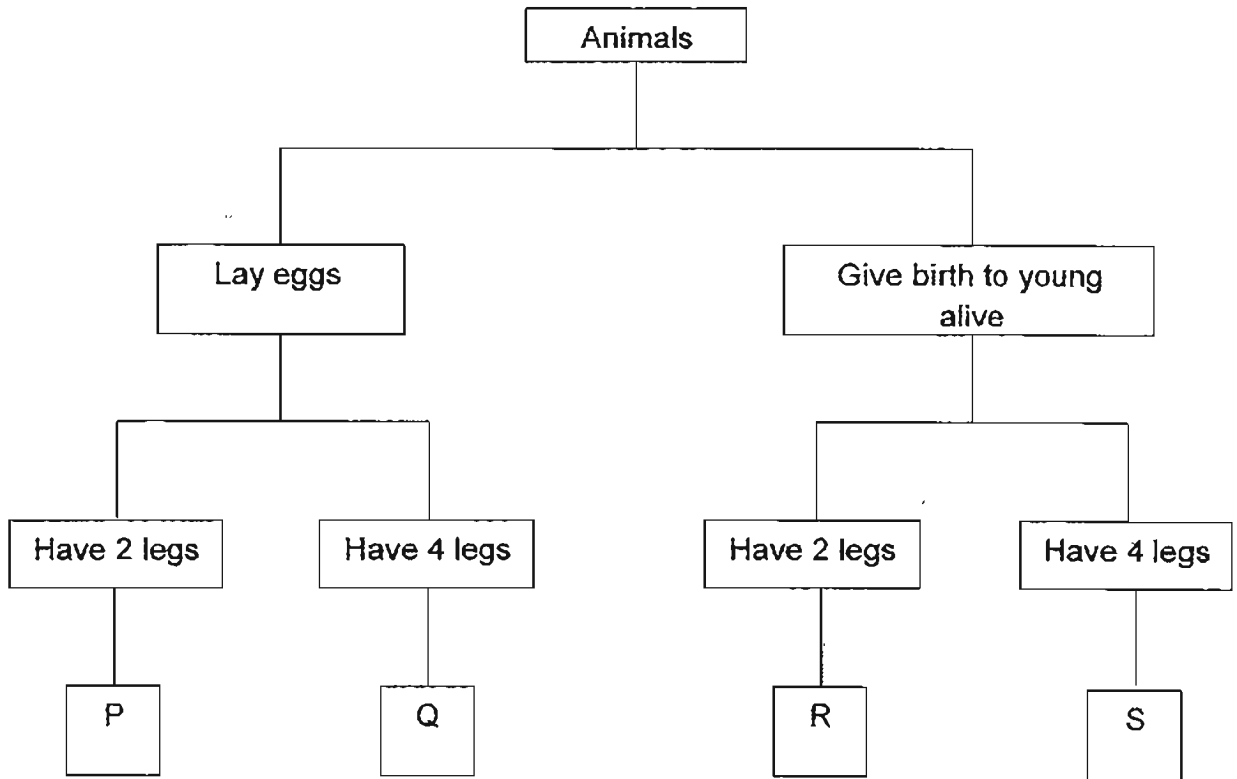
- 13 Animal Y was placed in a tank with 15 leaves, 15 flies and some water. The table below shows the number of leaves and flies which remained after 3 days.

Day	Number of leaves	Number of flies
1 st	15	15
2 nd	15	10
3 rd	15	7

If the experiment was to continue, how many leaves would there be left in the tank at the end of the 7th day?

- (1) 12
 - (2) 13
 - (3) 14
 - (4) 15
- 14 Which of the following is a living thing?
- (1) A waterfall
 - (2) A fallen leaf on the ground
 - (3) A cake becoming big and fluffy in an oven
 - (4) A Venus flytrap closing its leaves to trap animals

15 Study the classification chart below.



Where would you put the ostrich in the classification chart above?

- (1) P
- (2) Q
- (3) R
- (4) S



Pei Hwa Presbyterian Primary School
First Continual Assessment – 2011

Science

Primary 3

(Time: 1 hour 30 minutes)

Booklet A	/ 30
Booklet B	/ 20
Total	/ 50

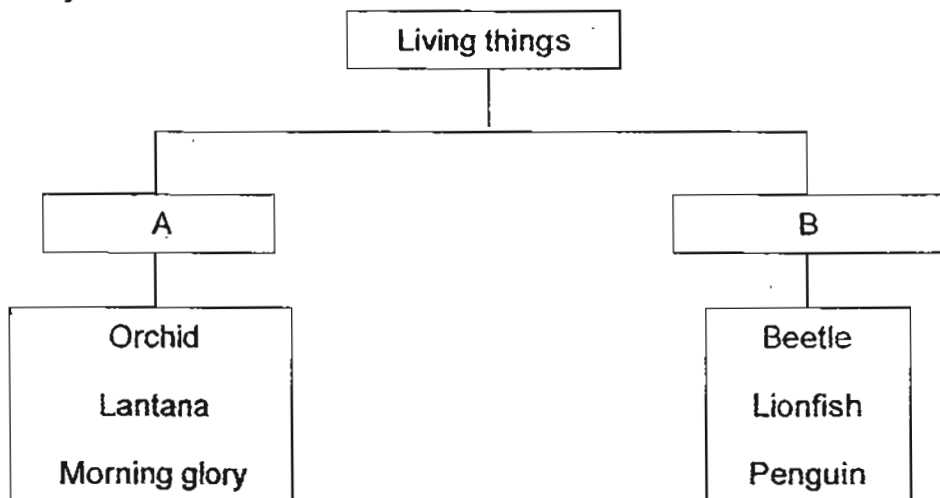
Name: _____ () Class: Responsibility ()

Date: _____ Parent's Signature: _____

BOOKLET B (20 MARKS)

Write your answers to questions 16 to 22 in the spaces provided.

16 Study the classification table below.

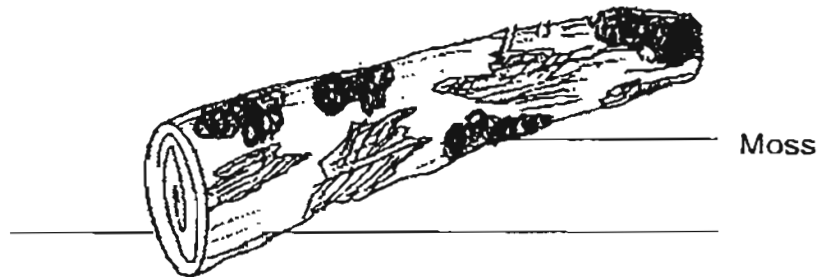


(a) Based on the table above, identify the sub-headings A and B. [1]

A: _____ B: _____

(b) Under which group (A or B) would you place 'clover'? [1]

- 17 Victor and his brother, Mark, went for a hike at Bukit Batok Nature Reserve. During the hike, they noticed that many of the rocks and fallen logs were covered with moss.



- (a) Why do you think mosses are usually found on the rocks and fallen logs at the nature reserve? [1]

Victor and Mark also saw some Bird's Nest ferns growing on the trees.



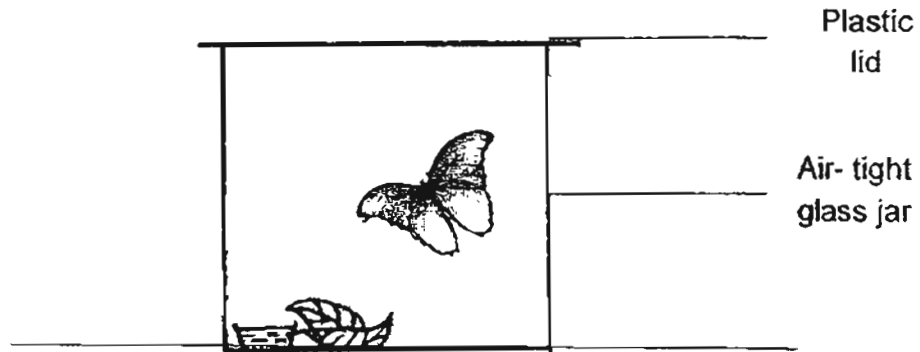
Bird's Nest Fern

- (b) State two ways the Bird's Nest fern and moss are similar? [2]

(i) _____

(ii) _____

- 18 Audrey placed a butterfly in an air-tight glass jar with enough food and water to last a week. After two days, she found the butterfly dead.



- (a) Why did the butterfly die? [1]

- (b) What could she have done to prevent the butterfly from dying? [1]

- 19 Jun Xiang was watching a documentary on 'Animals'. He made two observations below. State the characteristics of living things each observation describes.

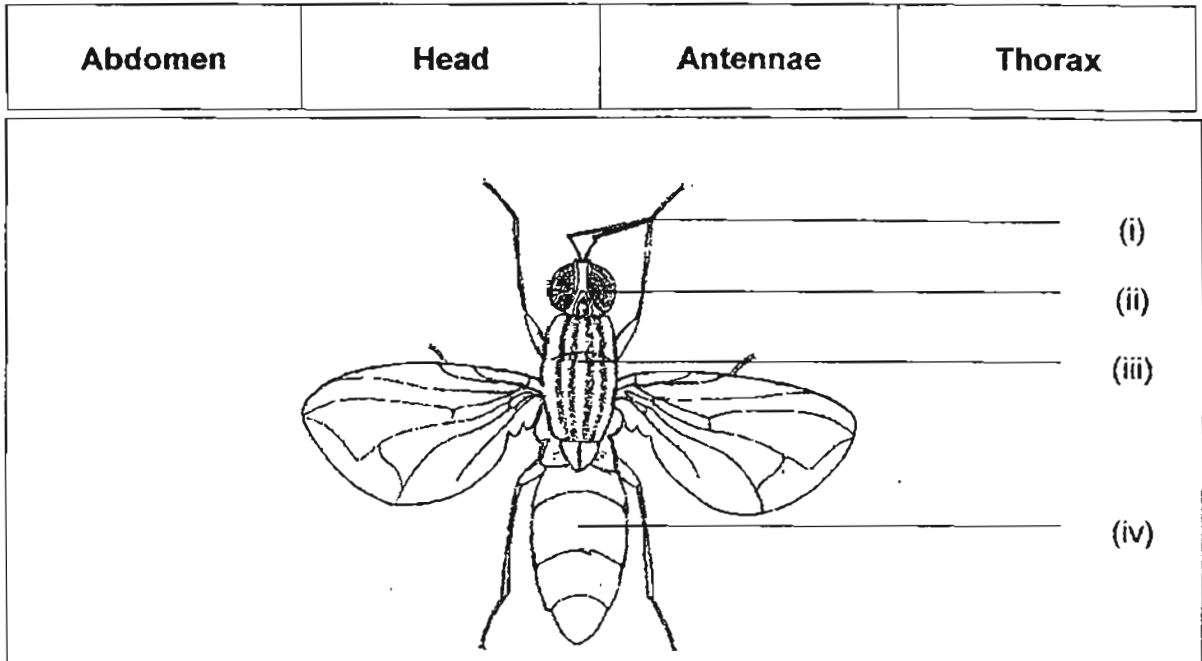
- (a) Observation: 'The animals ran away when the hunter fired a shot from his gun'. [1]

Characteristic: _____

- (b) Observation: 'A female frog laying eggs in a pond'. [1]

Characteristic: _____

20 The picture below shows an insect.



Label the parts of the insect using the helping words provided above. [2]

(a) (i): _____

(ii): _____

(iii): _____

(iv): _____

(b) How many body parts does the insect have? [1]

(c) What does the insect have to protect its body with? [1]

21 Study the table below carefully.

Animals		
X: Covered with hair	Y: Covered with feathers	Z: Covered with Scales
Dog	Eagle	Eel
Deer	Parrot	Stingray
Tiger	Pigeon	Swordtail

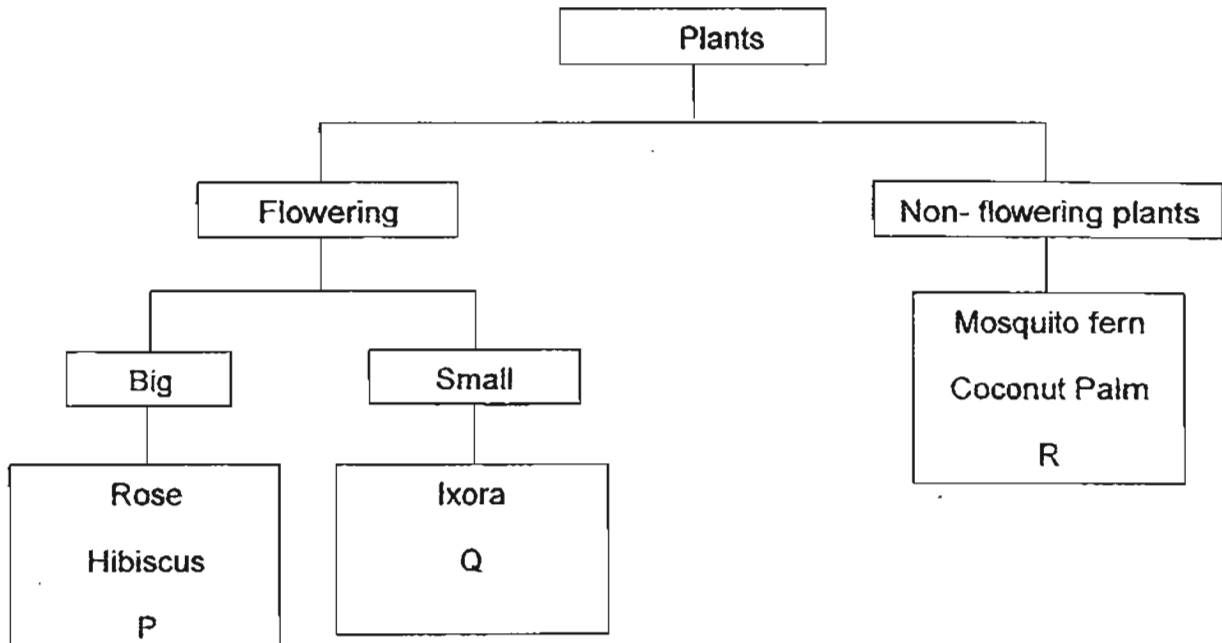
(a) Besides a difference in their outer covering, state two other differences between the animals in group X and Y. [2]

(i) _____

(ii) _____

(b) Under which group (X, Y or Z) would you place a 'crocodile'? [1]

22 Jason collected some plants and classified them according to the chart below.



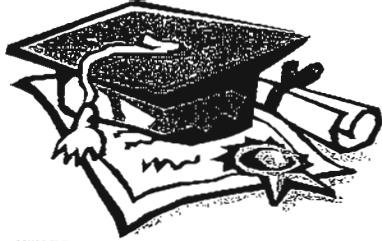
(a) From the table above, what is the difference between the hibiscus and ixora plants? [1]

(b) In the table above, one plant is wrongly classified. Identify the plant? [1]

(c) In the table above, which letter (P, Q or R) represents the 'rice plant'? [1]

(d) Since mosquito fern is a non-flowering plant, how does it reproduce? [1]

----- End of Paper -----



ANSWER SHEET

EXAM PAPER 2011

SCHOOL : PEI HWA *Science*
SUBJECT : PRIMARY 3 CHINESE

TERM : CA1



Q1	Q2	Q3	Q4	Q5	Q6	Q7	Q8	Q9	Q10	Q11	Q12	Q13	Q14	Q15
3	4	2	3	2	3	3	4	3	4	3	4	4	4	1

16)a)A: Plants B: animal b)I will place the clover in group A.

17)a)Mosses are usually found on rocks and fallen logs because it is a little damp, not much sunlight and a little soil on it, so you can find mosses on it.

b)i)They are both non-flowering.

ii)They grow from spores.

18)a)The butterfly die because there were not enough air in the glass jar.

b)Poke some holes on the plastic lid.

19)a)Living things respond to changes.

b)Living things reproduce.

20)a)i)Antennae ii)head iii)thorax iv)abdomen

b)An insect has 3 body parts.

c)The exo-skeleton.

21)a)i)X give birth to live young and Y lay eggs.

ii)X have 4 legs and Y have only two legs.

22)a)A ixora is smaller than the Hibiscus.

b)The coconut plant is wrongly classified because the coconut plant has flowers.

c)The letter Q represents the rice plant.

d)It reproduces by spores.