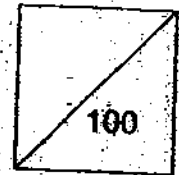


**HENRY PARK PRIMARY SCHOOL  
2009 SEMESTRAL EXAMINATION I  
SCIENCE  
PRIMARY 3**



Duration of Paper: 1 h 45 min

Name: \_\_\_\_\_ ( )

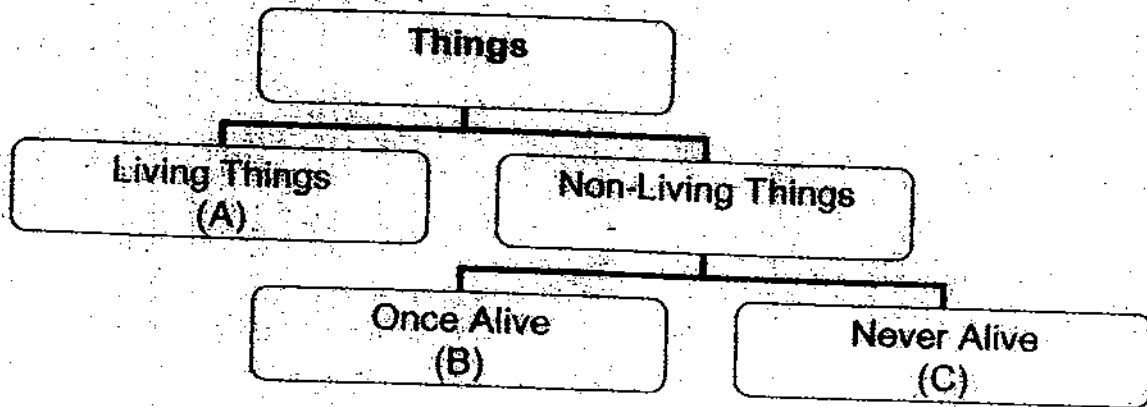
Class: Pr 3 \_\_\_\_\_

Parent's Signature: \_\_\_\_\_

**PART 1 (60 marks)**

For each question from 1 to 30, four options are given. One of them is the correct answer. Make your choice (1, 2, 3 or 4). Shade the correct oval (1, 2, 3 or 4) on the Optical Answer Sheet.

1. Look at the diagram below and answer the following question.



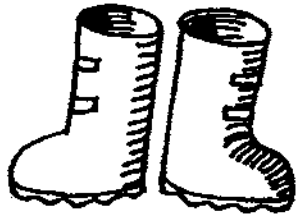
Which one of the following represent A, B and C correctly?

	A	B	C
(1)	Snake	Cardboard	Whale
(2)	Computer	Envelope	Ruler
(3)	Bracket Fungus	Dried Leaves	Pebble
(4)	Seashells	Rubber Tree	Book

( )

2. Which of the following is made from something that was once part of a living thing?

(1)



Rubber Boots

(2)



Plastic Shopping Bag

(3)



Metal Pot

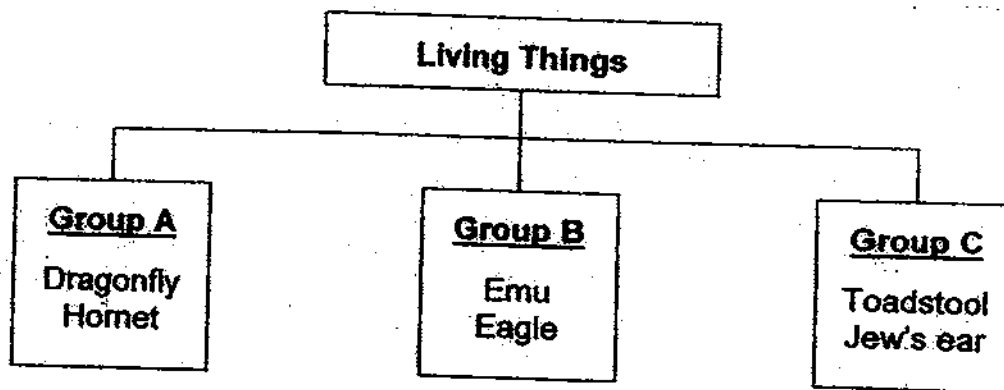
(4)



Ceramic Cup

( )

3. Study the classification table below.



Which one of the following shows the correct headings for Groups A, B and C?

	<b>Group A</b>	<b>Group B</b>	<b>Group C</b>
(1)	Birds	Fungi	Insects
(2)	Insects	Birds	Bacteria
(3)	Birds	Fish	Fungi
(4)	Insects	Birds	Fungi

4. Sam saw a cat running when a dog was chasing it. Which characteristics of living things are shown by both animals?

- A: Living things grow
- B: Living things reproduce
- C: Living things move on their own
- D: Living things respond to changes

- (1) A and B only
- (2) A and C only
- (3) B and D only
- (4) C and D only

5. A teacher gave her pupils some information about **Animal B** as shown below.

<b>It has no gills</b>
<b>It does not lay eggs</b>
<b>It feeds its young with milk</b>
<b>It has hair as outer covering</b>

Four pupils then made the statements about animal B.

Sam : It can fly.

Xiaoling: It is a fish.

Siti : It lives in water.

Gupta : It is a mammal.

Which pupil made the correct conclusion?

- (1) Siti
- (2) Sam
- (3) Gupta
- (4) Xiaoling

( )

6. The table below shows some characteristics of Animals **P**, **Q**, **R** and **S**. A tick (✓) shows the characteristics that each animal has.

Animal	Lay eggs	Give birth to their young	Breathe air through gills	Can fly	Feed their young with milk
<b>P</b>	✓		✓		
<b>Q</b>	✓				✓
<b>R</b>		✓		✓	
<b>S</b>		✓			✓

Which one of the following is correct?

- (1) **P** is a goldfish
- (2) **Q** is a ladybird
- (3) **R** is a penguin
- (4) **S** is a young butterfly

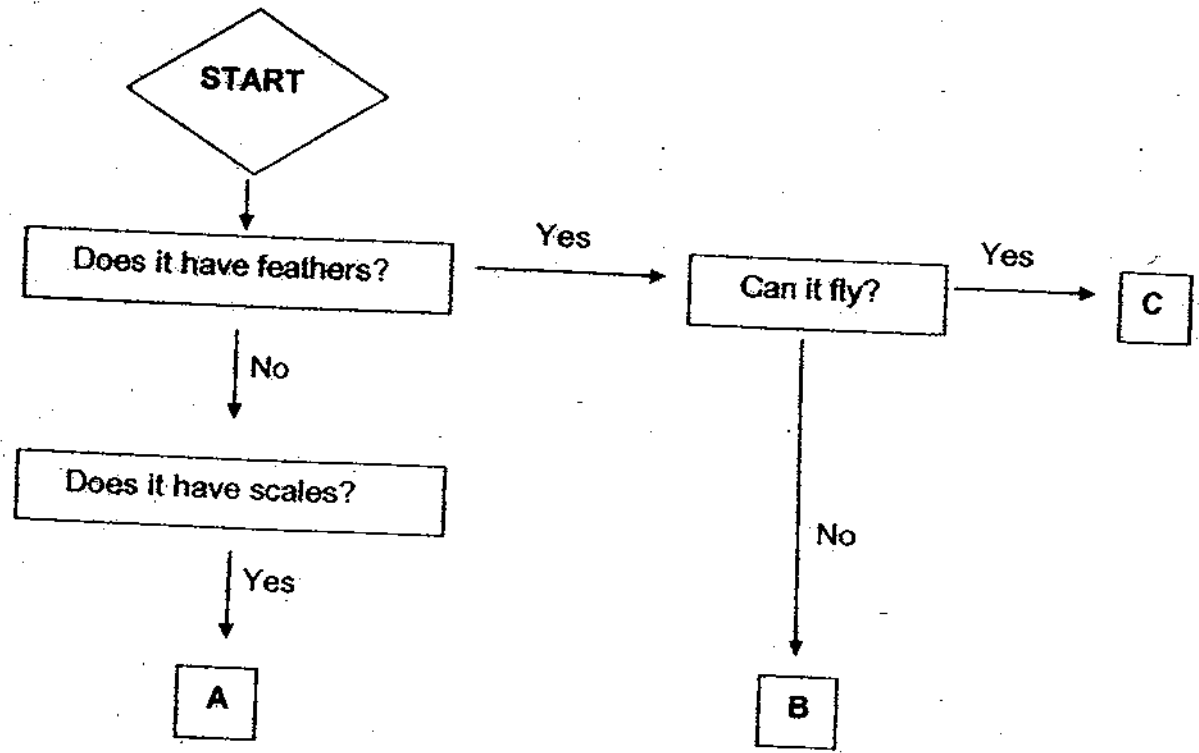
( )

7. Insect is the only group of animals that has \_\_\_\_\_

- A: wings.
- B: six legs.
- C: three body parts.
- D: gills that take in air dissolved in water.

- (1) A and D only
- (2) A and C only
- (3) B and C only
- (4) B and D only

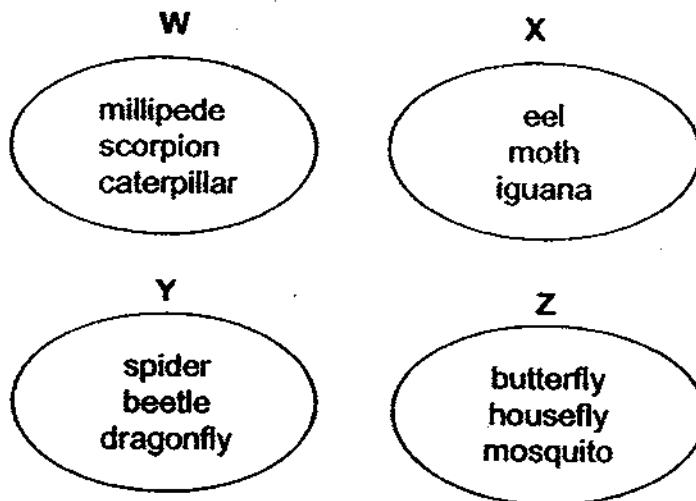
8. The flow chart below is used to identify animals A, B and C.



Which one of the following correctly represents A, B and C?

	A	B	C
(1)	parrot	goldfish	ostrich
(2)	guppy	emu	kingfisher
(3)	sardine	crow	penguin
(4)	owl	chicken	shark

9. Study Groups W, X, Y and Z carefully.

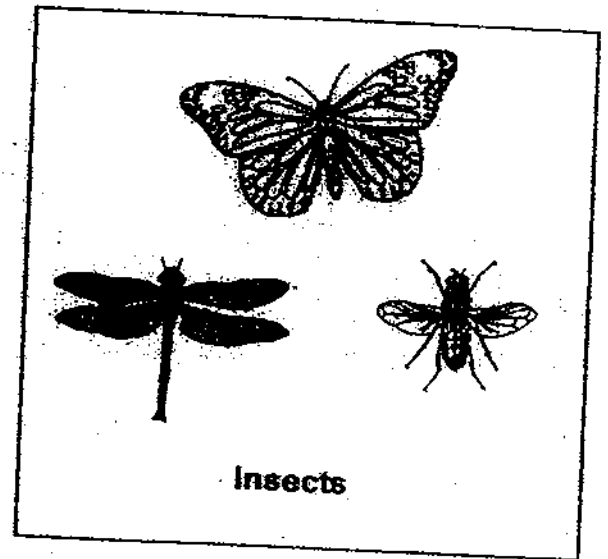
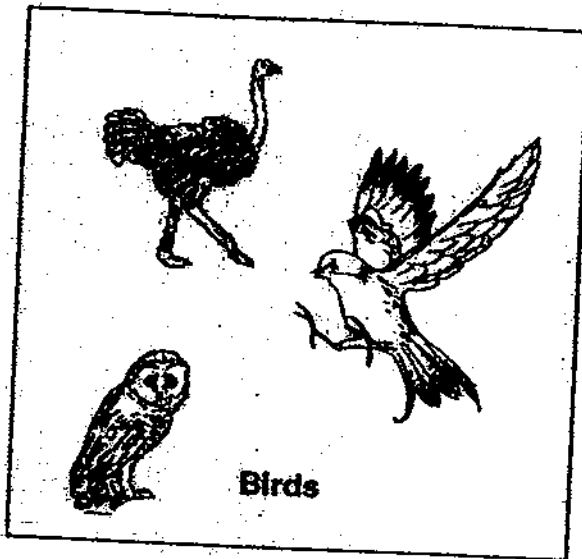


Which one of the groups above is made up of insects only?

- (1) Group W
- (2) Group X
- (3) Group Y
- (4) Group Z

( )

10. The pictures below show two groups of animals.



In what ways are the two groups similar?

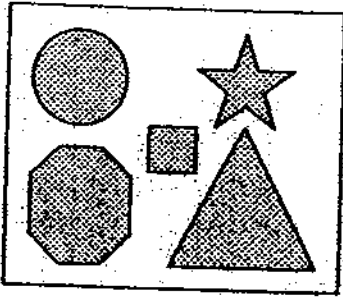
- A: They can fly.
- B: They have wings.
- C: They search for food.
- D: They give birth to live young.

- (1) A and B
- (2) A and D
- (3) B and C
- (4) D and C

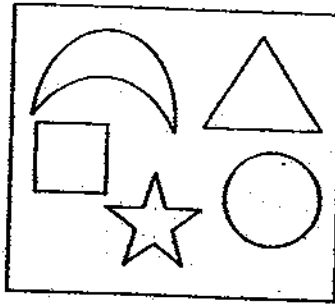
( )

11. Study Groups A, B and C carefully.

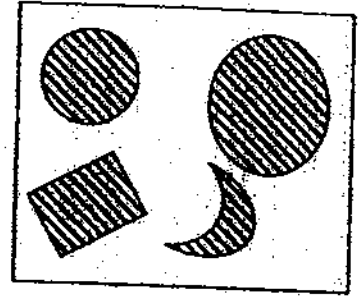
A



B



C



In what way are the objects classified?

- (1) Sizes
- (2) Shapes
- (3) Patterns
- (4) Number of sides

( )

12. Look at the pictures of the four animals below. Which animal is **not** an insect?

(1)



(2)



(3)



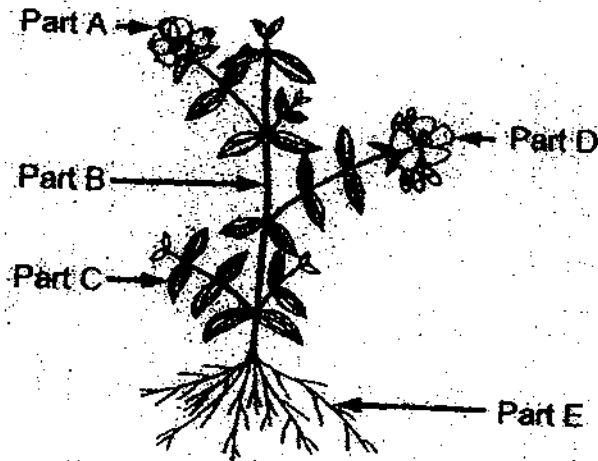
(4)



( )



13. Look at the picture of the plant below.

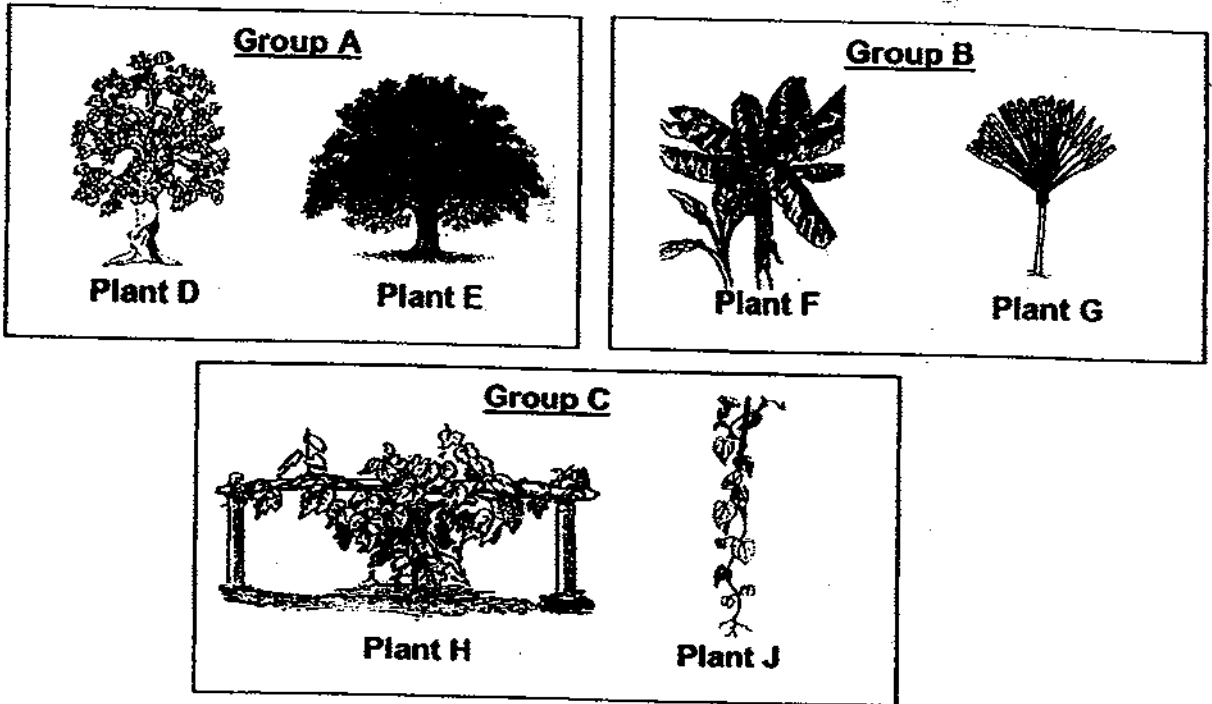


Which of the following shows the correct names of the plant parts?

	Part A	Part B	Part C	Part D	Part E
(1)	Stem	Flower	Leaf	Fruit	Roots
(2)	Stem	Fruit	Roots	Flower	Leaf
(3)	Fruit	Stem	Leaf	Flower	Roots
(4)	Flower	Leaf	Stem	Fruit	Roots

( )

14. Amy classified some plants into Groups A, B and C.



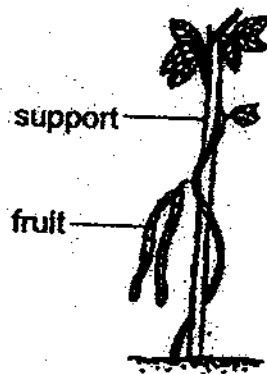
Amy saw Plants K and L in Judy's garden.



Based on Amy's classification for Groups A, B and C above, which groups, A, B or C should she place Plants K and L in?

	Plant K	Plant L
(1)	Group C	Group B
(2)	Group C	Group A
(3)	Group A	Group C
(4)	Group B	Group A

15. The picture below shows a plant growing in the garden.



- A: It has a weak stem.  
B: It reproduces by seeds.  
C: It is a non-flowering plant.  
D: It cannot make its own food.

Which of the above statements are true of the plant?

- (1) A and B only  
(2) A and C only  
(3) B and D only  
(4) C and D only

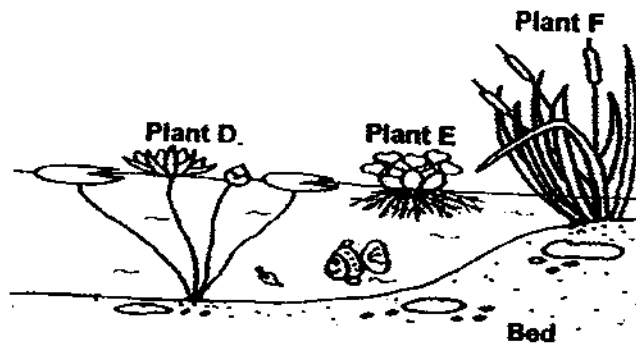
16. Three boys wrote the following statements after observing some plants.

**Ali:** Mosses are non-flowering plants.  
**Edwin:** Ferns can make their own food.  
**Nelson:** Plants cannot move.

Who wrote an incorrect statement?

- (1) Edwin only  
(2) Nelson only  
(3) Ali and Edwin only  
(4) Ali and Nelson only

17. The picture below shows some water plants.



Which are the floating water plants in the picture above?

- (1) E only
  - (2) D and E only
  - (3) E and F only
  - (4) D, E and F only
- ( )
18. The crown of a tree casts a shadow when there is sunlight.  
The crown is the branches and leaves extending from the stem.



Zack observes Plants A, B, C and D at the same time of the day.



Plant A



Plant B



Plant C

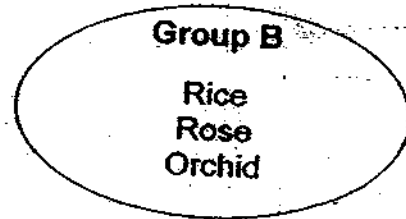
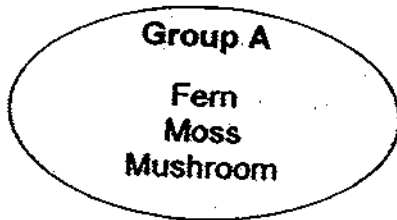


Plant D

Which plant, A, B, C or D, would provide the most shade?

- (1) Plant A
  - (2) Plant B
  - (3) Plant C
  - (4) Plant D
- ( )

19. Devi grouped some living things as shown below.



How did Devi group the living things?

	<b>Group A</b>	<b>Group B</b>
(1)	Non-flowering plants	Flowering plants
(2)	Feed on decaying matter	Makes its own food
(3)	Reproduce by spores	Reproduce by seeds
(4)	Cannot make its own food	Can make its own food

20. The table below shows the characteristics of Plants P, Q, R and S. A tick (✓) means that the plant has the characteristic.

Plants	Characteristics			
	Has a weak stem	Reproduces by spores	Found in water	Bears flowers
P	✓			
Q		✓		✓
R	✓			
S	✓	✓	✓	✓

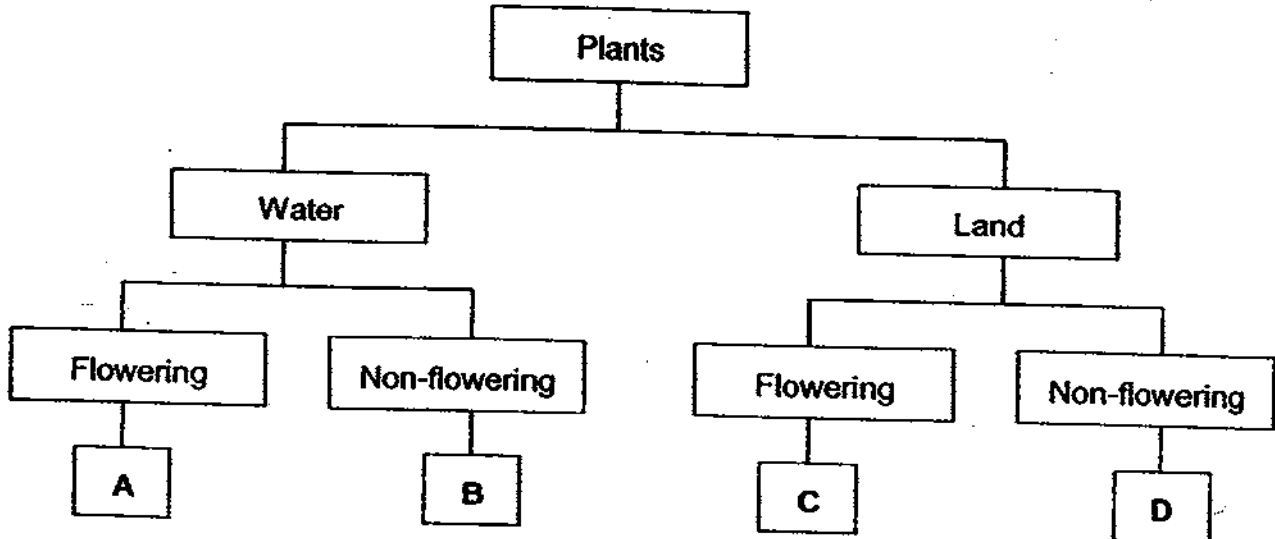
Which characteristic differentiates Plant R from Plants P, Q and S?

- (1) Where it grows
- (2) How it reproduces
- (3) Whether it bears flowers or not
- (4) Whether it has a strong or weak stem

21. The table below shows some characteristics of Plants X and Y.

Plants	Bears fruit	Grows in water
X	Yes	No
Y	No	Yes

Based on the characteristics of Plants X and Y, Lynn placed them in the classification table below.

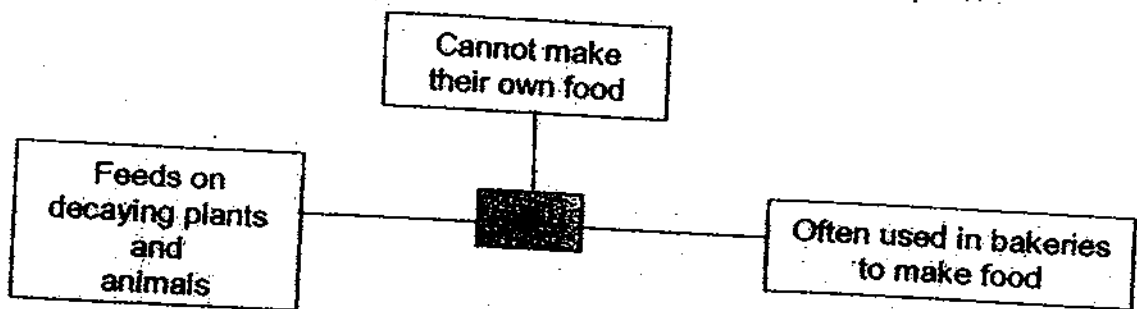


Which one of the following shows where Lynn should place Plants X and Y in the classification table?

	Plant X	Plant Y
(1)	A	B
(2)	C	B
(3)	C	D
(4)	D	A

( )

22. The diagram below shows different characteristics of X.



What is X likely to be?

- (1) Ferns
- (2) Yeast
- (3) Cactus
- (4) Mosses

23. The table below provides information on the characteristics of two living things, X and Y. Use the information to answer questions 23 and 24.

Characteristics	X	Y
Can reproduce	✓	✓
Can move from place to place		✓
Can only be seen with the help of a microscope		✓

Based on the information given above, which of the following correctly represent X and Y?

	X	Y
(1)	Spore	Bacteria
(2)	Puffball	Mosses
(3)	Bracket fungus	Bacteria
(4)	Spore	Puffball

24. In what way are the living things in X and Y similar?

- (1) Both can be seen easily.
- (2) Both are able to move about.
- (3) Both can make their own food.
- (4) Both are able to reproduce their own kind.

25. The table below shows some materials that have been put into two groups.

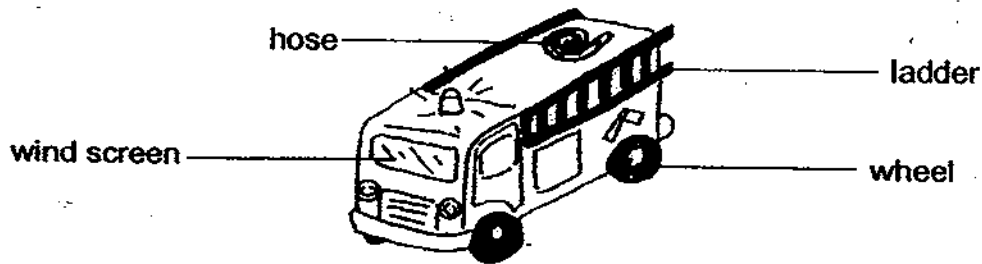
Group A	Group B
Silk	Cotton
Wool	Rubber
Leather	Rattan

Which one of the following shows suitable headings for Groups A and B?

	Group A	Group B
(1)	From Plants	From Animals
(2)	Man-made	Natural
(3)	From Animals	From Plants
(4)	Natural	Man-made

( )

26. The picture below shows a real fire engine.



**Real Fire Engine**

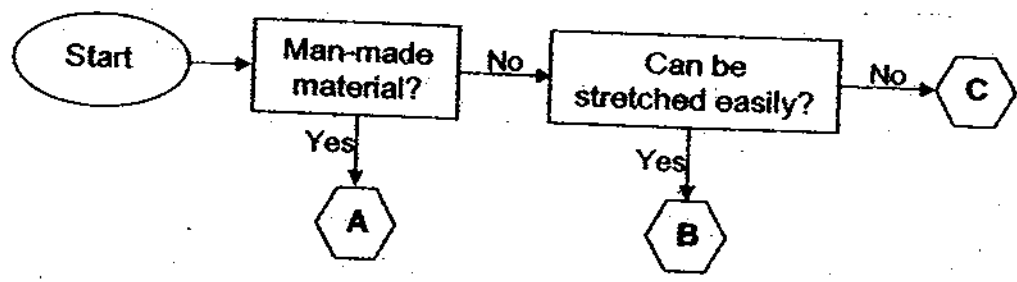
Which two parts are made from the same material?

- (1) Hose and wheel
- (2) Hose and ladder
- (3) Wind screen and wheel
- (4) Wind screen and ladder

( )



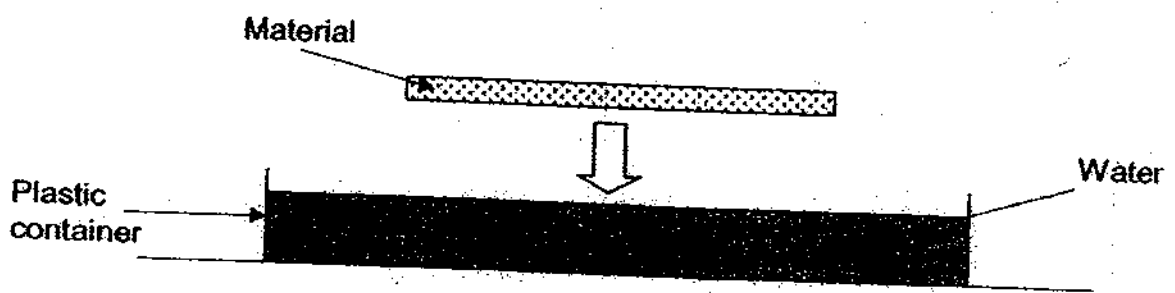
27. Study the flow chart below.



Which one of the following correctly represents Materials A, B and C?

	Materials		
	A	B	C
(1)	Ceramic	Metal	Rubber
(2)	Glass	Rubber	Wood
(3)	Wood	Silk	Cotton
(4)	Metal	Wood	Silk

28. Lydia uses 2 materials, E and F, to set up 2 similar setups as shown below. The materials are of the same size, shape and thickness.



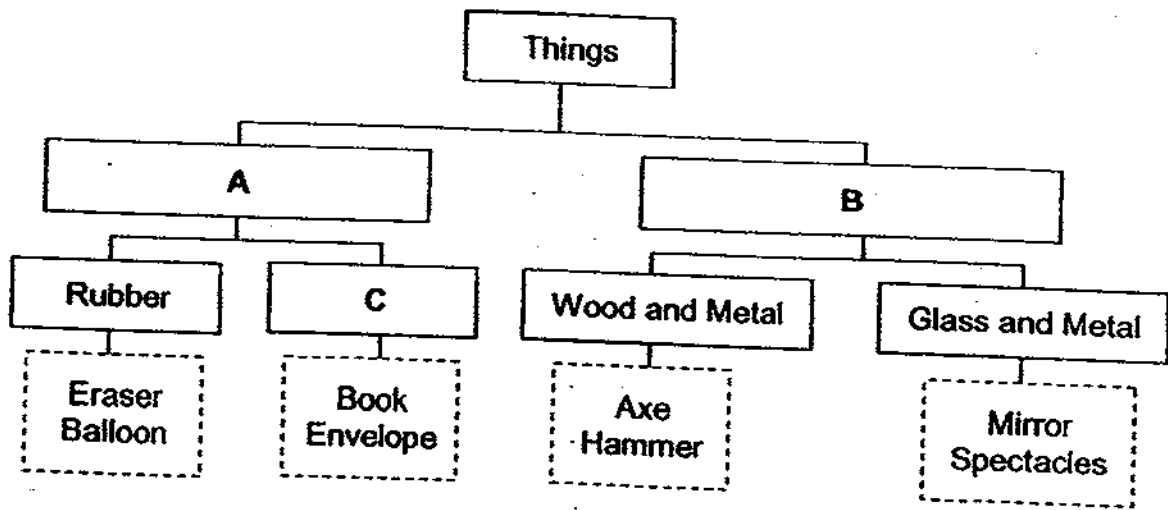
Lydia places each material gently on the water surface and observes the following.

Material	Observation made
E	Sinks immediately to the bottom of the container
F	Remains afloat after 10 minutes

Based on the observations made by Lydia, which one of the following shows what materials E and F are most likely to be?

	Materials	
	E	F
(1)	Ceramic	Metal
(2)	Metal	Ceramic
(3)	Rubber	Metal
(4)	Metal	Rubber

29. The classification table below shows how some objects are grouped according to the materials they are made of.

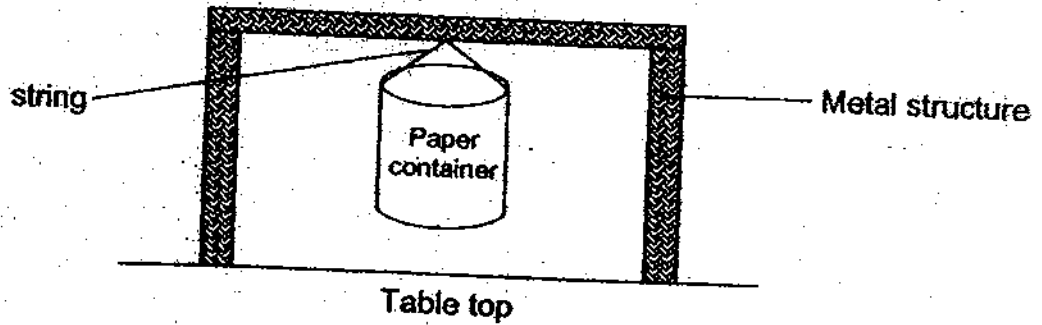


Which one of the following correctly represents the headings for A, B and C in the classification table above?

Headings			
	A	B	C
(1)	Plants	Animals	Paper
(2)	Plants	Animals	Fabric
(3)	One Material	Two Materials	Fabric
(4)	One Material	Two Materials	Paper

( )

30. Susan had 4 different types of paper of the same thickness. She made 4 containers of the same size from the papers. She then prepared a setup as shown below to test the strength of the papers.



Susan then dropped marbles of the same size and mass into the paper containers until they tore. The number of marbles the paper containers could hold before the paper tore was recorded in the table below.

Type of paper	Number of marbles
Tissue paper	2
Cardboard	40
Newspaper	7
Magazine paper	10

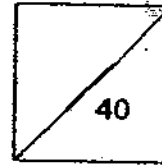
Based on the above results, which type of paper is the strongest?

- (1) Cardboard
- (2) Newspaper
- (3) Tissue paper
- (4) Magazine paper

( )

End of Part 1

HENRY PARK PRIMARY SCHOOL  
2009 SEMESTRAL EXAMINATION I  
SCIENCE  
PRIMARY 3



Name: \_\_\_\_\_ ( )

Class: Pr 3 \_\_\_\_\_

**PART 2 (40 marks)**

Write your answers to questions 31 to 44 in the spaces given.

31. Sarah placed 2 potted plants, A and B near a window.  
She watered plant A everyday while she did not water plant B at all.  
Both plants receive sufficient sunlight and fertilisers were also added to the soil.

(a) After 1 week, one of the plants dried up and died.  
Which plant is it?

(1m)

---

(b) State a reason why the plant in (a) died.

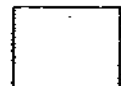
(1m)

---

(c) Which characteristic of living things does the above situation show?

(1m)

---



32. Study the two objects below.



**Car**



**Plant**

(a) State one similarity between a car and a plant.

(1m)

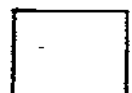
---

(b) State two differences between a car and a plant.

(2m)

---

---



33. Ben recorded some observations of animals E, F, G and H in the table below.

Animal	What they eat	How they reproduce	Where they live
E	Plants	Lays eggs	Pond
F	Insects	Lays eggs	Forest
G	Animals	Lays eggs	Mountain
H	Fruits	Lays eggs	Ocean

(a) State one similarity between Animals E, F, G and H. (1m)

---

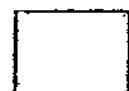
---

(b) Ben then classified the animals into 2 groups, Group S and Group T. (2m)

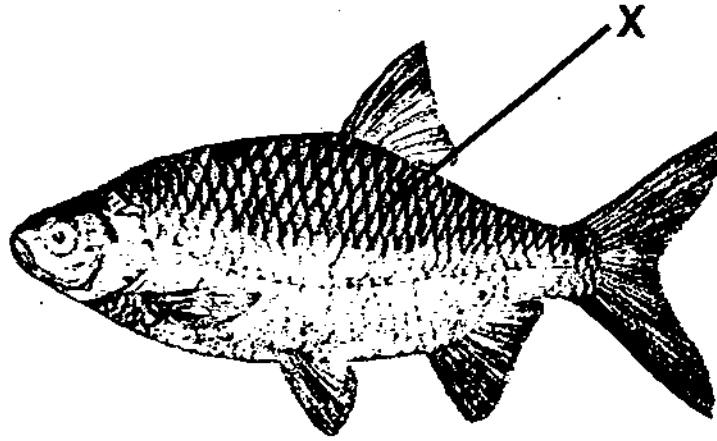
In the boxes below, show how Ben could have classified Animals E, F, G and H based on the characteristics he observed.

Give a heading to each group.

Group S: _____	Group T: _____



34. Study the diagram of a fish below and answer the questions that follow.



(a) What is Part X?

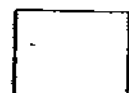
(1m)

---

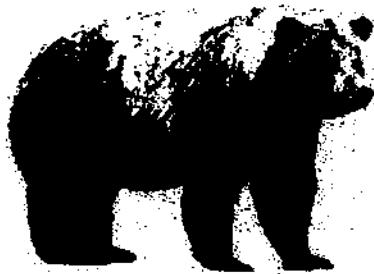
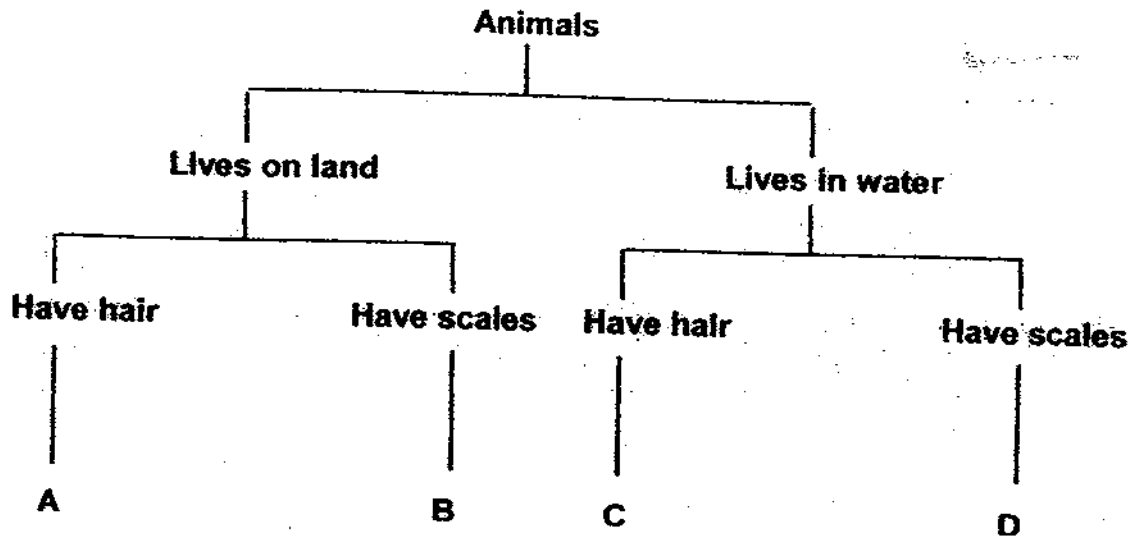
(b) How does Part X help the fish?

(1m)

---



35. Study the diagram below carefully and answer the following questions.



(a) Which group, A, B, C or D does the animal above belong to? (1m)

It belongs to Group \_\_\_\_\_

(b) State one difference between the animals in Group B and D. (1m)

\_\_\_\_\_

\_\_\_\_\_

(c) Name one animal that can be in Group C. (1m) (1m)

The animal is \_\_\_\_\_





36. The following animals are grouped according to their outer coverings.

Group A	Group B	Group C	Group D
crab	ant	chimpanzee	pelican
lobster	grasshopper	kangaroo	ostrich
prawn	cockroach	bat	snail

An animal has been placed in the wrong group.

(a) Name the animal that has been wrongly grouped.

(1m)

---

(b) Explain your answer.

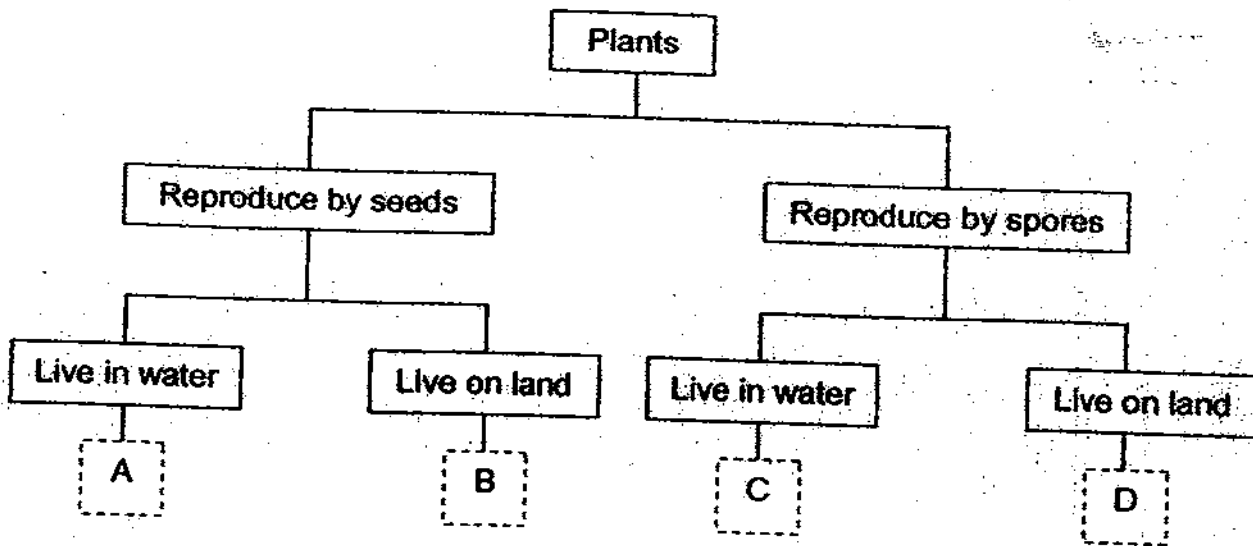
(1m)

---

---



37. The classification table below shows the characteristics of Plants A, B, C and D.



(a) State a similarity and a difference between Plants A and C.

(2m)

Similarity:

---

---

Difference:

---

---



38. Jason collected some leaves from the school garden.



Leaf J



Leaf K



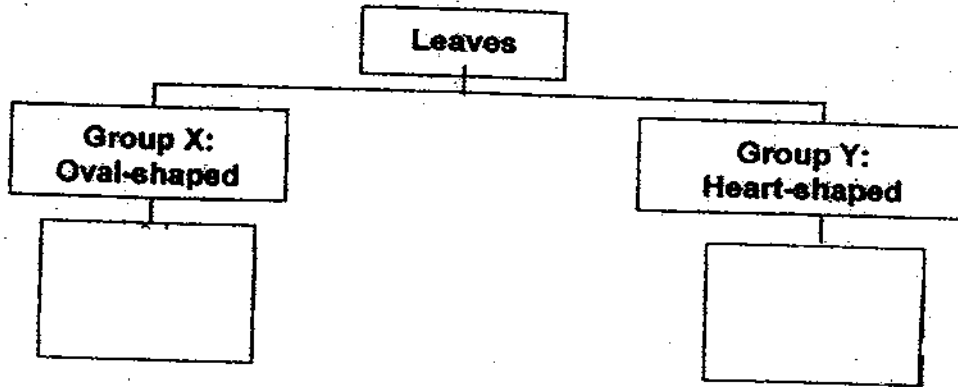
Leaf L



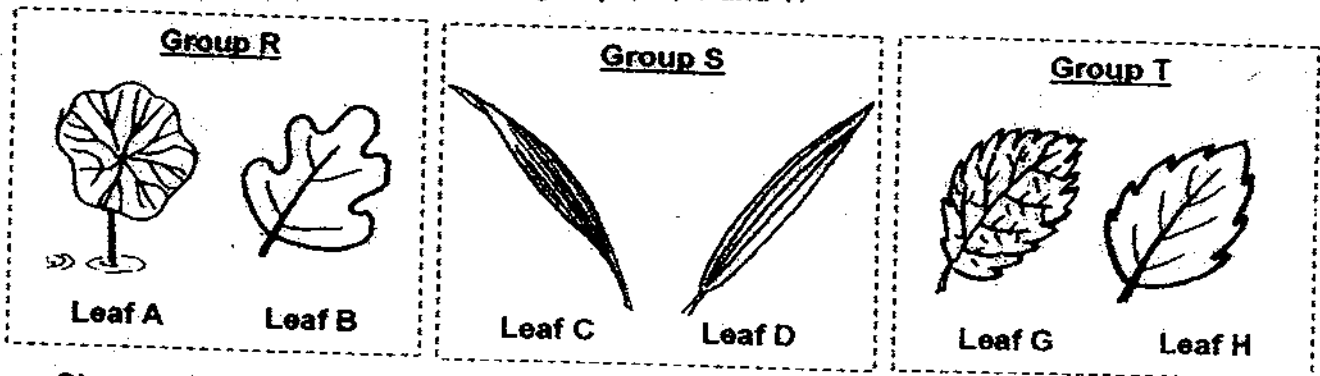
Leaf M

(a) Jason drew the classification table below. Observe the leaves carefully. Help Jason to complete it by writing the letters, J, K, L and M in the boxes provided.

(2m)



Jonathan classified 6 leaves into 3 groups, R, S and T.



Observe Leaf Z.

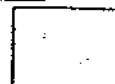


(b) Which group, R, S or T would you place Leaf Z in? Give a reason for your answer.

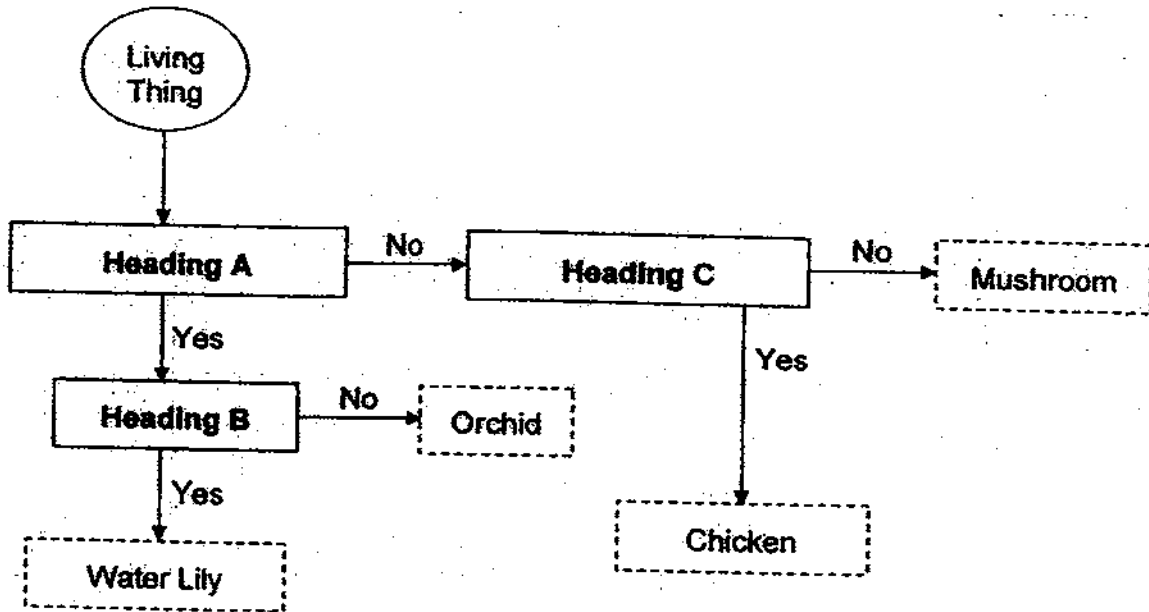
(1m)

\_\_\_\_\_

\_\_\_\_\_



39. Study the flow chart below.



Draw lines to match the headings to their descriptions to complete the flow chart. (3m)

Heading A ★

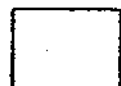
Heading B ★

Heading C ★

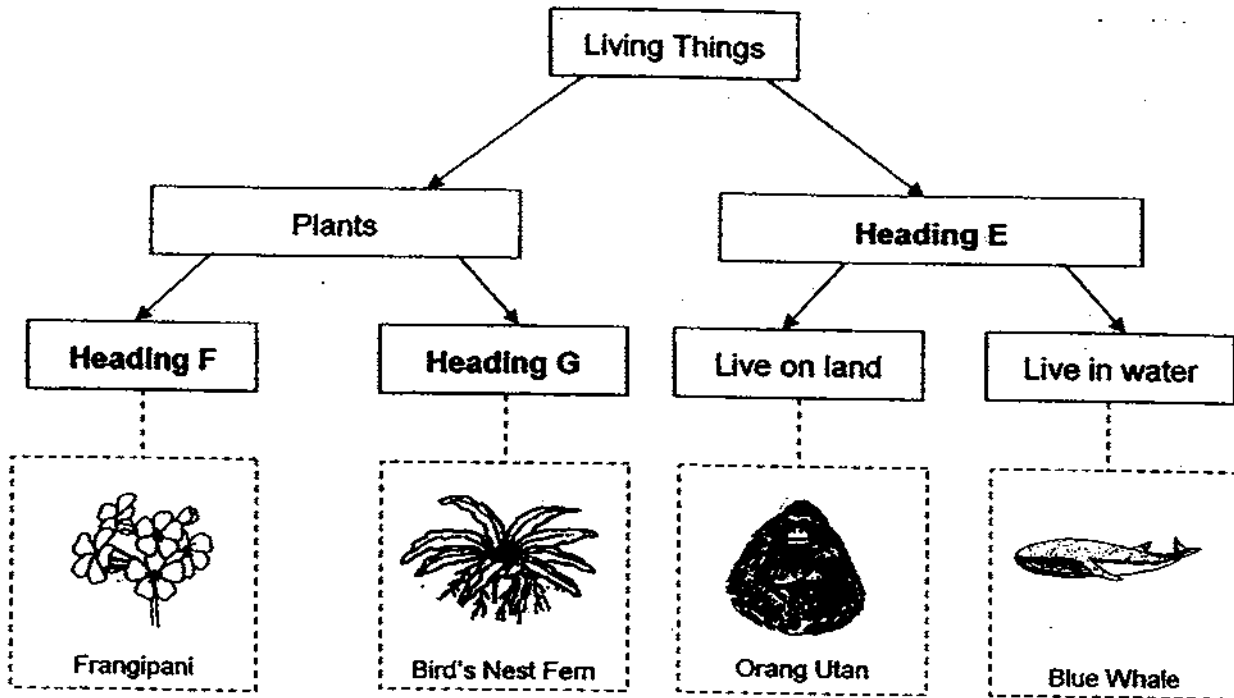
★ Does it hunt for food?

★ Is it found in water?

★ Is it a plant?



40. Esther drew the classification table below.



(a) What would be a suitable heading for E?

(1m)

---

(b) State a similarity and a difference between the frangipani and bird's nest fern.

(2m)

Similarity:

---



---

Difference:

---



---



41. Alice left a slice of bread on a table for 3 weeks. After 3 weeks, she observed that black spots have grown on the slice of bread. Below is a picture of the slice of bread with the black spots.



- (a) What are the black spots most likely to be? (1m)

\_\_\_\_\_

- (b) Which group of living things do the black spots belong to? (1m)

\_\_\_\_\_

42. Look at the picture below and answer the following questions.



- (a) Name Part A and Part B. (1m)

(i) Part A: \_\_\_\_\_

(ii) Part B: \_\_\_\_\_

- (b) What can be found in Part B? (1m)

\_\_\_\_\_



43. The picture below shows the materials used to make a pair of spectacles.



(a) Other than using glass, name another material which can be used to make the spectacle lens. (1m)

\_\_\_\_\_

(b) State the characteristic of glass and the material you chose in part (a) that makes them suitable for making the lens. (1m)

\_\_\_\_\_

Seth had 3 materials, A, B and C, of the same size and thickness. He used each material to scratch the other 2 materials and recorded his observations in the table below.

A tick (✓) shows that there are scratch marks while a cross (✗) means there is no scratch marks.

Material used to scratch the other 2 materials	Presence of scratch marks		
	Material A	Material B	Material C
A		✓	✗
B	✗		✗
C	✓	✓	

(c) Based on Seth's experiment, which property of material was he testing for? (1m)

\_\_\_\_\_

Part D of a car needs to be scratch-proof (cannot be scratched easily). (1m)

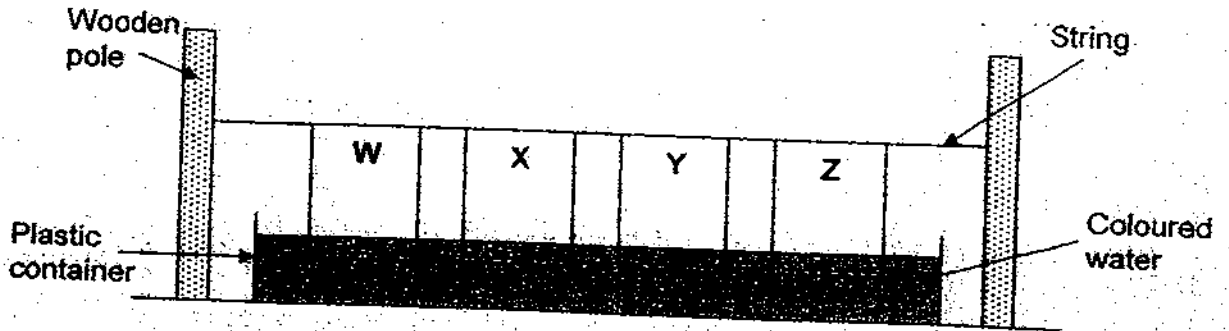


(d) Which material, A, B or C, should be used to make Part D?

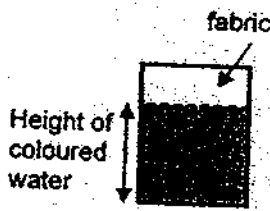
\_\_\_\_\_



44. Joo Nam cut a piece of fabric of identical size and shape from Materials W, X, Y and Z. With the cut-out fabrics, he set up the experiment as shown below.



After 3 minutes, he measured the height of the coloured water shown on each fabric. He recorded his findings in the table below.



Material	Height of coloured water (cm)
W	10
X	3
Y	1
Z	6

Absorbency is how much water a material is able to take in. A material that is able to take in more water is more absorbent than a material that takes in less water.

- (a) Based on Joo Nam's findings, place the materials, W, X, Y and Z, in order of their absorbency. (1m)

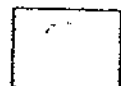
Most absorbent Least absorbent

- (b) Which material, W, X, Y or Z, is the most suitable material for making a bath towel? (1m)

- (c) Explain <sup>why</sup> the material you chose in part (b) is suitable for making a bath towel. (2m)

End of Part 2

Settlers: Mdm Fathion Tawfik  
Mrs Joyce Wee





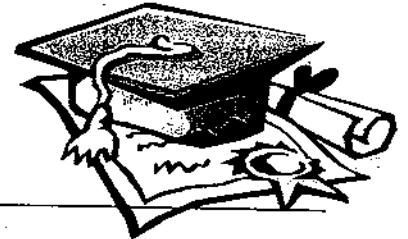


# ANSWER SHEET

**EXAM PAPER 2009**

**SCHOOL : HENRY PARK PRIMARY**  
**SUBJECT : PRIMARY 3 SCIENCE**

**TERM : SA1**



Q1	Q2	Q3	Q4	Q5	Q6	Q7	Q8	Q9	Q10	Q11	Q12	Q13	Q14	Q15	Q16	Q17
3	1	4	4	3	1	3	2	4	3	3	2	3	2	1	2	1

Q18	Q19	Q20	Q21	Q22	Q23	Q24	Q25	Q26	Q27	Q28	Q29	Q30
3	3	1	2	2	3	4	3	1	2	4	4	1

31)a)Plant B.

b)Plant B does not have water at all.

c)Living things need water to survive.

32)a)They can move.

b)The plant have leaves but the car do not have.

33)a)All of them lays eggs.

b)Group S: Live in water.

Group T: Live on land.

E

F

H

G

34)a)Scales.

b)Part X help the fish to protect the fish body.

35)a)A.

b)Group B live on land but group D liv in water.

c)Dolphin.

36)a)Snail.

b)The snail does not have feathers as on outer covering.

37)a)Similarity: Both live in water.

Difference: plant A reproduce be seeds but Plant C reproduce by spores.

b)A: floating B: half submerged

38)a)X: Leaf K, Leaf L

Y: Leaf M, leaf J

b)I would place leaf Z in group T. It is toothed edge.

39)A



40)a)Animals.

b)They can make its own food.

c)Bird's nest fern reproduce by spores but frangipani reproduce by seeds.

41)a)The black spots are bread mould.

b)The black spots belong to Fungi.

42)a)i)cap ii)gills

b)We can found spores in part B.

43)a)Plastic.

b)Both are waterproof and transparent.

c)The hardness.

d)material C.

44)a)W, Z, X, Y

b)material W.

c)Material W can absorb the most water.