

Pei Chun Public School
Semestral Assessment 1 – 2014
Science
Primary 3

Name : _____ () Date : 16 May 2014

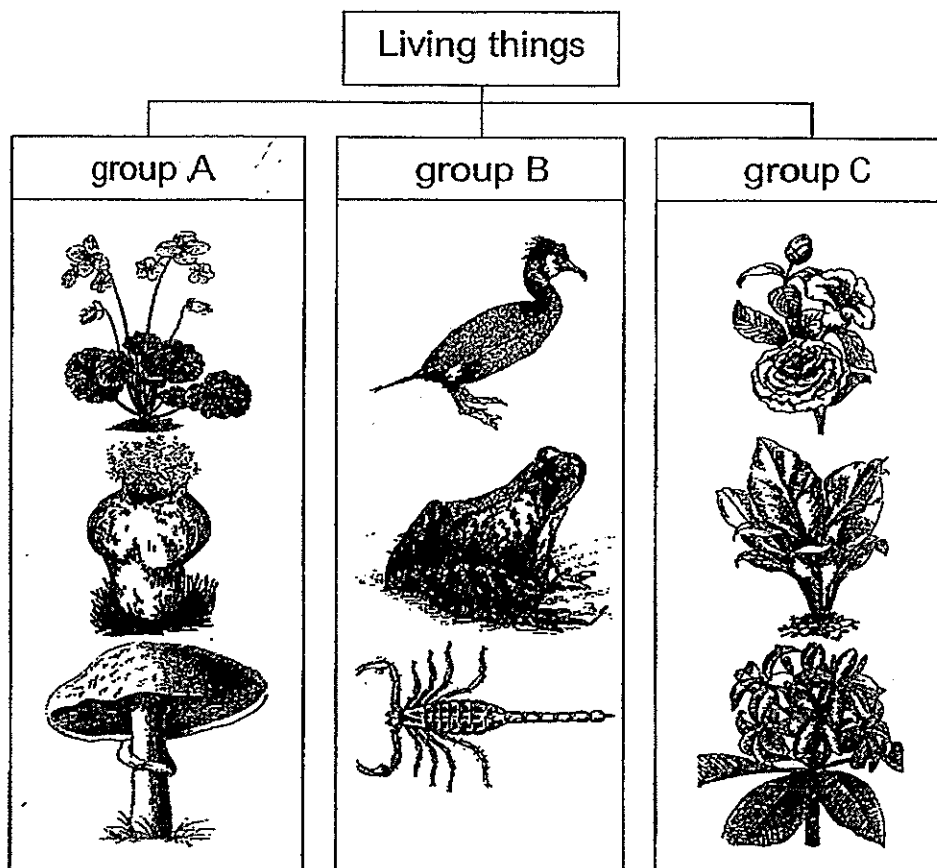
Class : Pri. 3 ()

Science Teacher : _____ Time : 50 min

Section A (15 × 2 marks)

For questions 1 to 15, choose the most suitable answer and shade its number (1, 2, 3 or 4) on the Optical Answer Sheet (OAS) provided.

1. Study the classification diagram below.



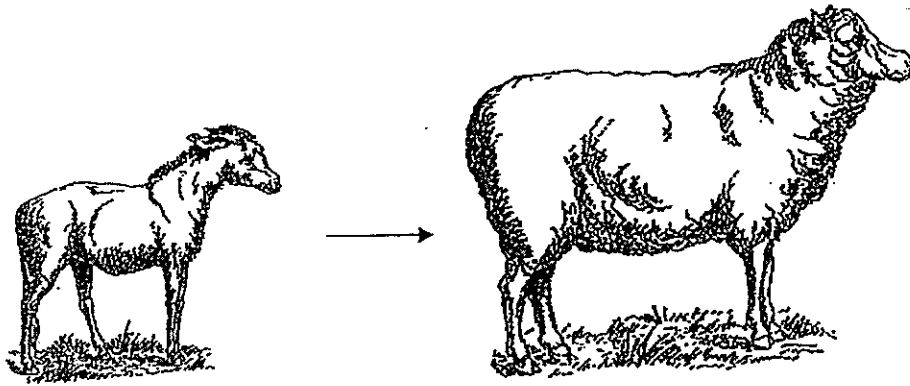
Which group(s) has/have a living thing wrongly classified?

- (1) A only
 (2) B only
 (3) A and C only
 (4) B and C only

()



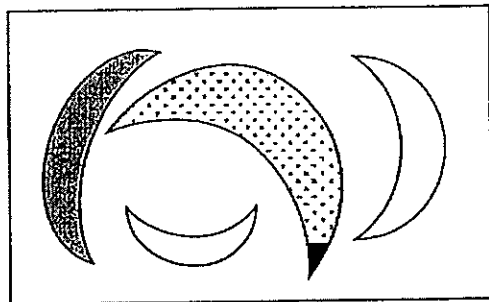
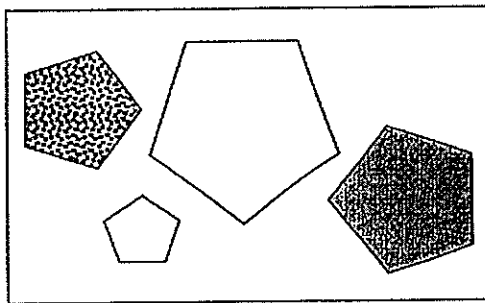
2. The diagrams below show an animal.



Based on the diagrams above, which characteristic of living things does the animal show?

- (1) It needs air, food and water to survive.
 - (2) It moves by itself.
 - (3) It grows.
 - (4) It dies.
- ()

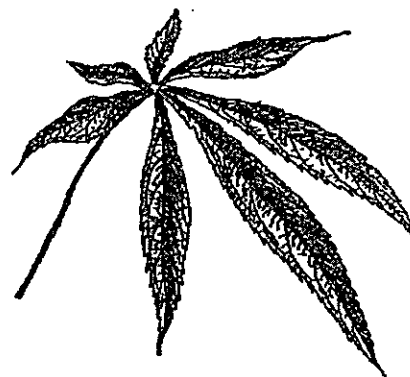
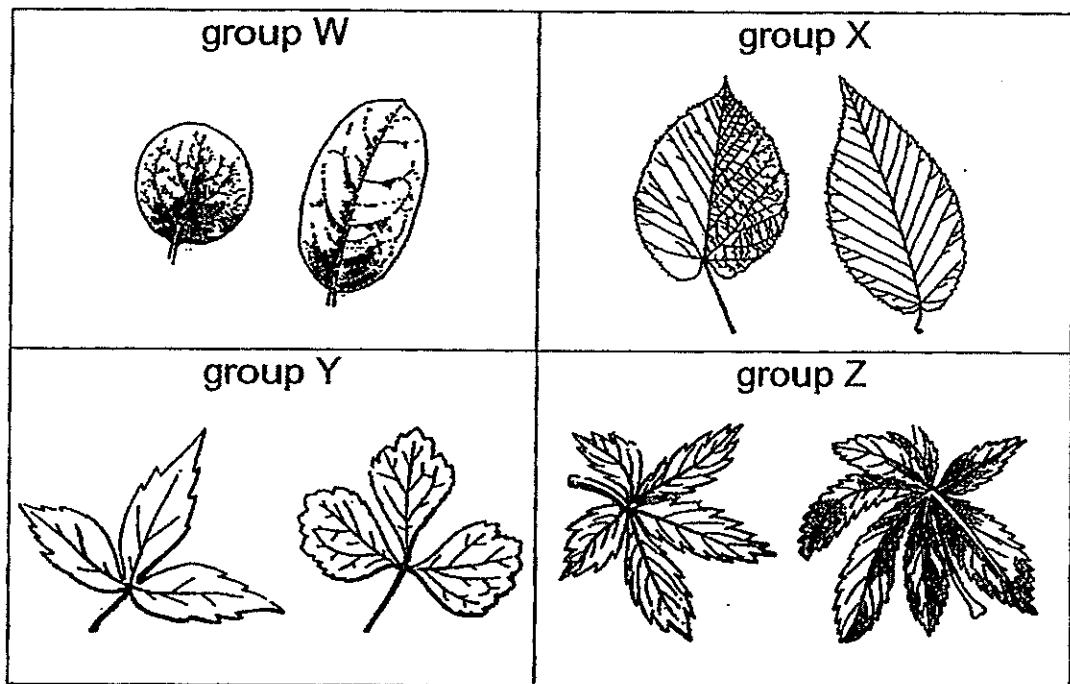
3. Study the diagrams below carefully.



The objects are grouped according to their _____.

- (1) patterns
 - (2) shapes
 - (3) colours
 - (4) sizes
- ()

4. The diagrams below show four different groups of leaves.

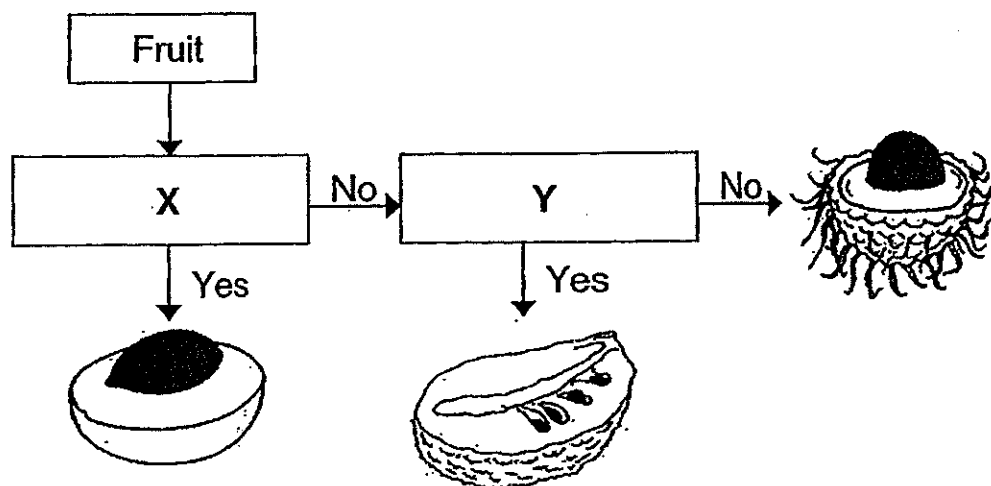


In which group would you classify the leaf shown above?

- (1) Group W
- (2) Group X
- (3) Group Y
- (4) Group Z

()

5. Study the flowchart of some fruits below.



Which of the following are suitable characteristics for X and Y?

	X	Y
(1)	Does it have rough skin?	Does it have one seed?
(2)	Does it have many seeds?	Does it have smooth skin?
(3)	Does it have one seed?	Does it have rough skin?
(4)	Does it have smooth skin?	Does it have many seeds?

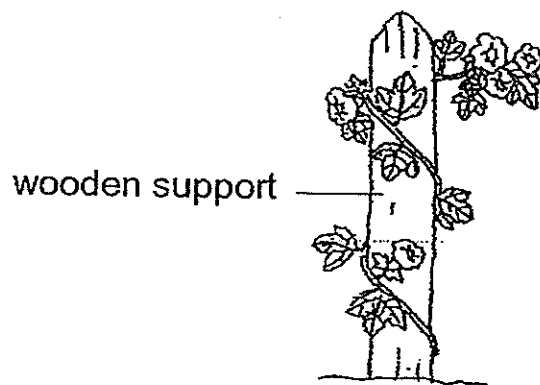
6. Study the classification table below.

Animals	
Give birth	Lay eggs
elephant seal	goose whale

Which of the animals above has been classified wrongly?

- (1) elephant
- (2) goose
- (3) whale
- (4) seal

7. The diagram below shows a plant.



Based on the diagram above, which of the following statements are correct about this plant?

- A : It has leaves.
- B : It has a weak stem.
- C : It is a flowering plant.
- D : The stem enables the plant to stand upright.

- (1) B and D only
- (2) A, B and C only
- (3) A, C and D only
- (4) A, B, C and D

()

8. The diagrams below show three animals.



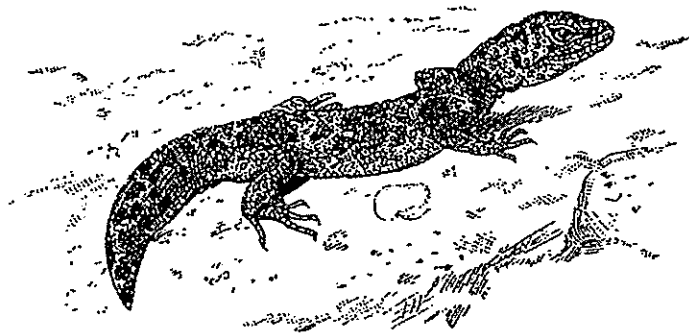
Based on the diagrams above, what common characteristics do these animals have?

- A : They have wings.
- B : They have feelers.
- C : They have six legs.

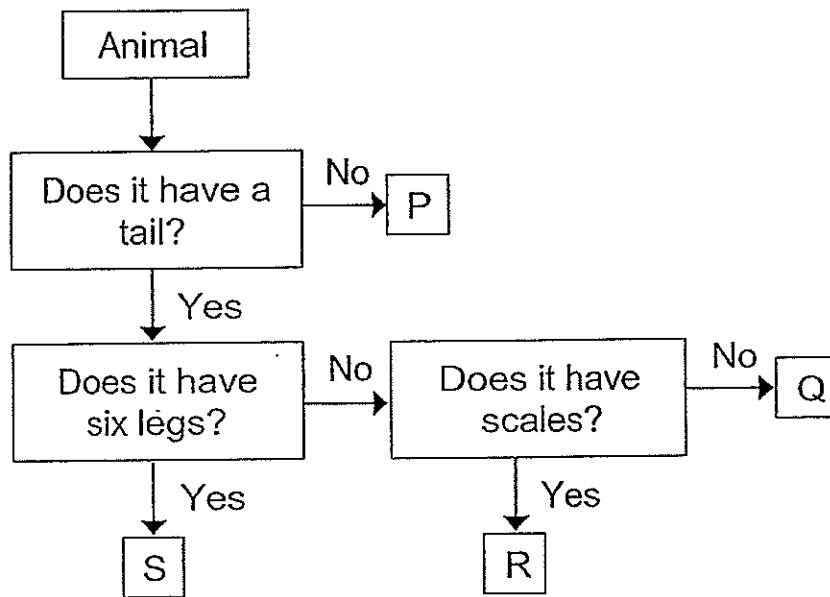
- (1) A and B only
- (2) A and C only
- (3) B and C only
- (4) A, B and C

()

9. Study the animal carefully.



Which of the letters in the flowchart represents the animal above?



- (1) P
- (2) Q
- (3) R
- (4) S

()

10. Kerry made the following statements about the characteristics of bacteria.

P : All bacteria are harmful to us.

Q : All bacteria reproduce from spores.

R : Most bacteria can make their own food.

S : Bacteria can only be seen using a microscope.

Which of the statement(s) is/are true about bacteria?

(1) S only

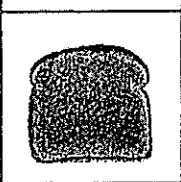
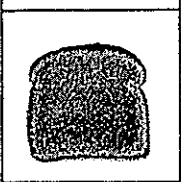
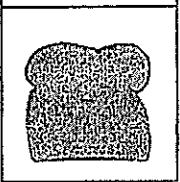
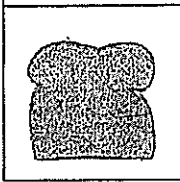
(2) P and S only

(3) Q and R only

(4) P, Q, R and S

()

11. Jie Yi took four slices of bread from the same loaf of bread and placed them under the following conditions as listed in the table below.

Set-up A	Set-up B	Set-up C	Set-up D
			
toasted bread 25°C	toasted bread 10°C	moist bread 25°C	moist bread 10°C

Which set-up would she see the most amount of mould growing on the bread?

(1) A

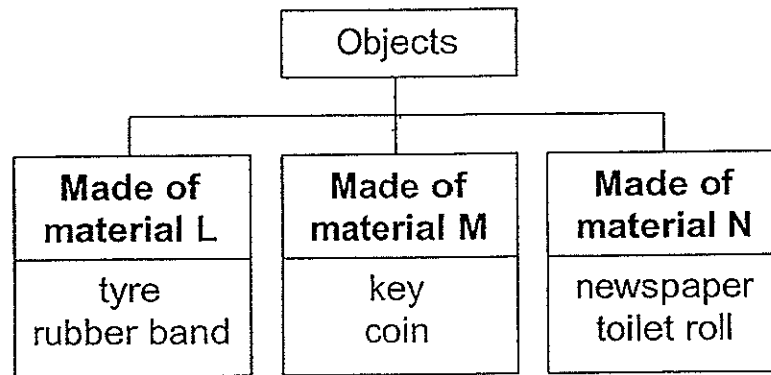
(2) B

(3) C

(4) D

(3)

12. The classification chart below shows how some objects have been grouped according to their materials, L, M and N.



Which of the following objects are correctly classified?

	Made of material L	Made of material M	Made of material N
(1)	eraser	cap	envelope
(2)	shirt	cap	cork
(3)	shirt	iron nail	envelope
(4)	eraser	iron nail	cork

()

13. The diagram below shows an umbrella with a part marked Y.

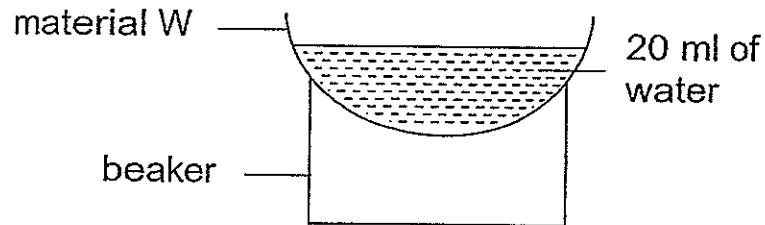


Based on the information below, which material is most suitable for making part Y for use on both rainy and sunny days?

	Material	Allows most light to pass through	Waterproof	Flexible
(1)	A		✓	✓
(2)	B		✓	
(3)	C			✓
(4)	D	✓	✓	

()

14. Aisyah set up an experiment as shown below. A sheet of material W was put over a beaker and 20 ml of water was poured onto it. She carried out this experiment with three other different materials of the same thickness, X, Y and Z.



She recorded the amount of water that remained on the material as shown below.

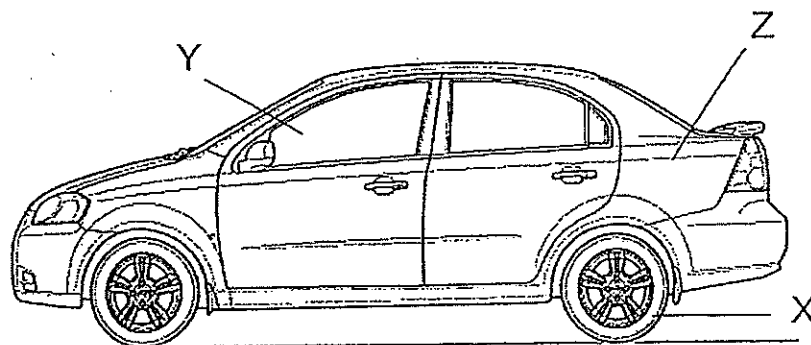
Material	Amount of water collected on the material (ml)
W	15
X	0
Y	9
Z	20

Based on the table, which material is waterproof?

- (1) W
- (2) X
- (3) Y
- (4) Z

()

15. The diagram below shows a car.



The parts labelled X, Y and Z are made of certain materials. The table below shows the reason why they are chosen.

Part	Why this material is chosen
X	It is waterproof and flexible.
Y	It does not allow light to pass through it.
Z	It is waterproof and strong.

Which of the parts are matched to the correct reasons?

- (1) X and Y only
- (2) X and Z only
- (3) Y and Z only
- (4) X, Y and Z

()

End of Section A

Pei Chun Public School
Semestral Assessment 1 – 2014
Science
Primary 3

Name : _____ ()

Class : Pri. 3 ()

Date : 16 May 2014

Time : 50 min

Science Teacher : _____

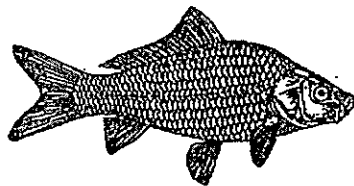
Parent's signature: _____

Section A	30
Section B	20
Total	50

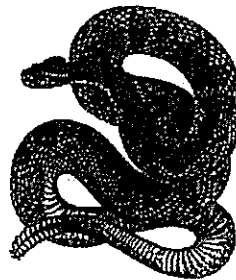
Section B (20 marks)

For questions 16 to 22, write your answers in the spaces provided.

16. Study the diagrams below.



carp



rattlesnake

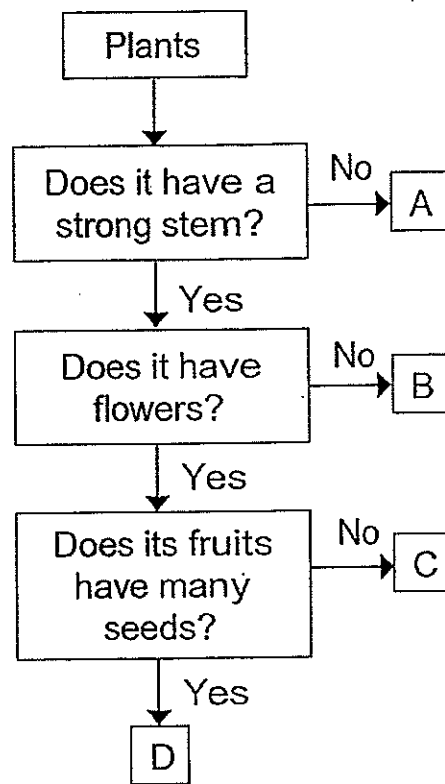
both the
^

a) Which group of living things do carp and rattlesnake belong to? [1]

b) State the body covering these two living things have in common.

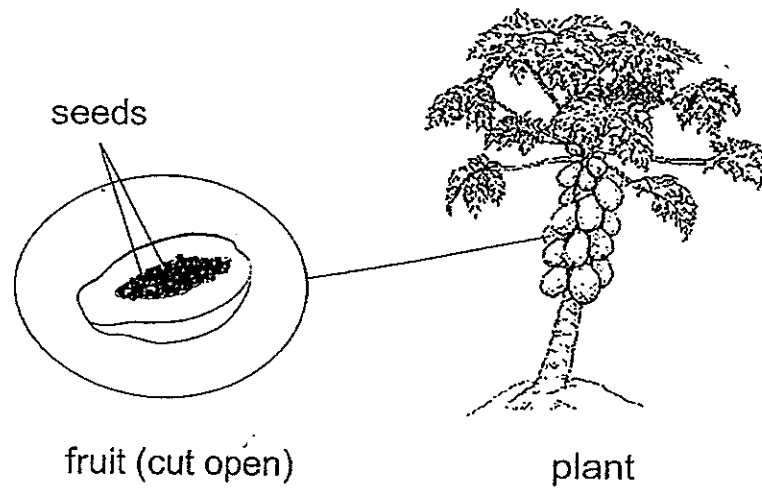
[1]

17. Study the flowchart below.



a) Based on the flowchart above, name two characteristics of plant B. [1]

b) The diagram below shows a plant.



- i) Based on your observation of the diagram above, which of the following statements about the plant is/are true? Put a tick (✓) in the correct box(es). [1]

Statement	True?
Its fruits have many seeds.	<input type="checkbox"/>
It has a strong stem.	<input type="checkbox"/>
It has flowers.	<input type="checkbox"/>

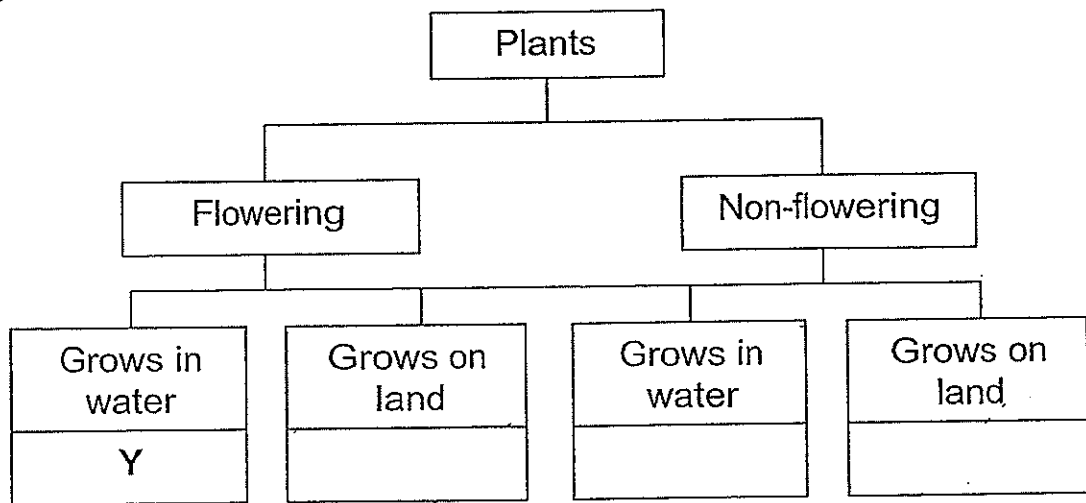
- ii) Based on the flowchart, which letter, A, B, C or D, represents the plant? [1]

Letter _____ represents the plant.

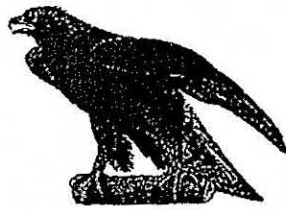
18. The table below provides information on four plants, W, X, Y and Z, based on two characteristics. A tick (✓) shows that the plant has the characteristic.

Characteristics	W	X	Y	Z
Bears fruit	✓		✓	
Grows in water		✓	✓	

The four plants are classified in the chart below. Write the letters, W, X, Y and Z in the correct box. The letter, Y, has been written for you. [3]



19. The diagrams below show a group of animals.



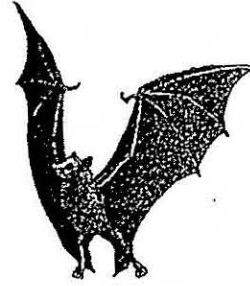
A



B



C



D

- a) One animal does not belong to the group. Identify the animal by writing the letter A, B, C or D. [1]

- b) Give a reason for your answer in (a). [1]

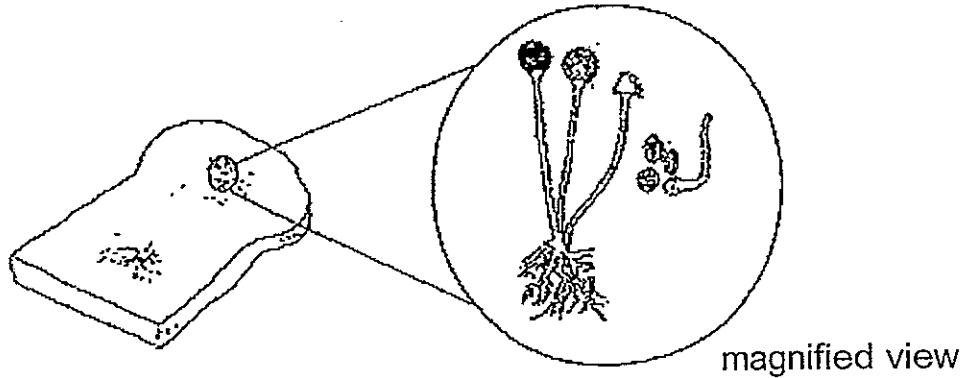
- c) The diagram below shows animal X.



animal X

State the part of its body that the animal uses to breathe when it is underwater. [1]

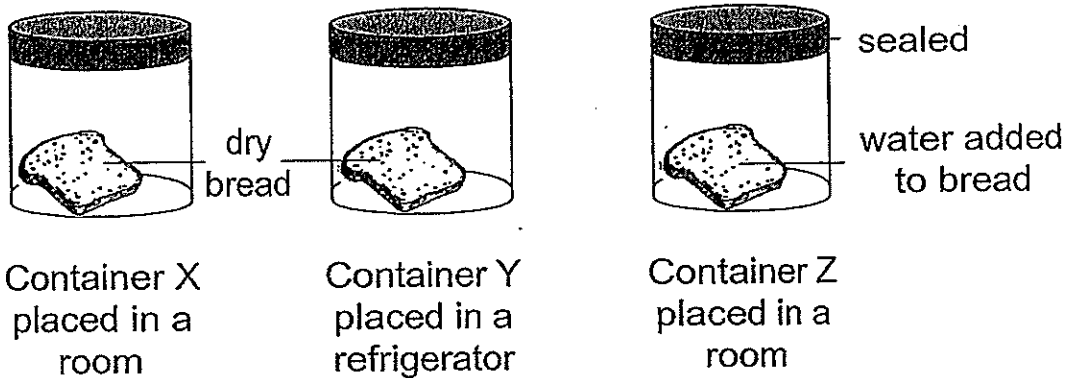
20. The picture below shows bread mould seen under the microscope.



a) How does the bread mould reproduce? [1]

b) Paul said, "The bread mould is a plant." Do you agree with him? Give a reason for your answer. [1]

c) The diagrams below show three sealed containers, X, Y and Z, with a piece of bread each.

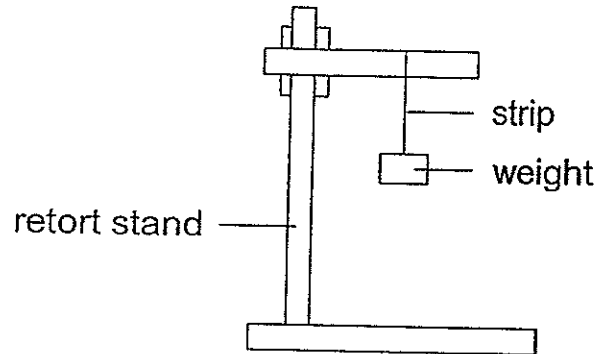


Arrange the letters, X, Y and Z, below, starting from the bread that will grow mould the slowest to the bread that will grow mould the fastest. [1]

(slowest)

(fastest)

21. Hwa Yong set up an experiment as shown below. He used four strips of different materials, P, Q, R and S. All four strips are of the same length.



He recorded the total number of weights on the strip just before it breaks, in the table below.

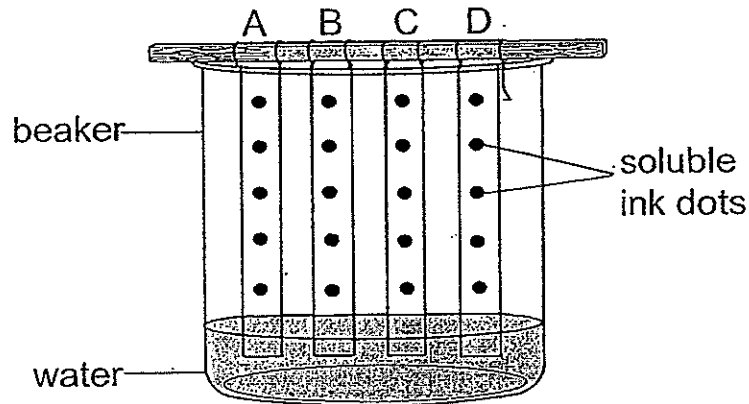
Material	P	Q	R	S
Number of weights before material breaks	4	9	18	12

- a) Which property of the materials was he trying to test? [1]

- b) Hwa Yong wanted to make a grocery bag that can hold 15 weights without breaking. Which material, P, Q, R or S, should he use for the grocery bag? [1]

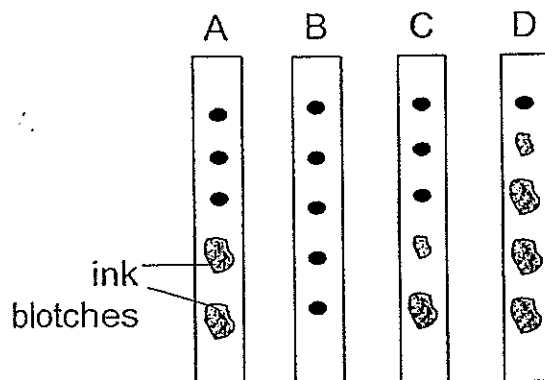
- c) Give a reason for your answer in (b). [1]

22. John wanted to find out which material absorbs the most amount of water. Strips of materials, A, B, C and D, were dotted with ink that can dissolve in water. He hung them in a beaker of water as shown below.



The water absorbed by the materials would smudge the ink dots along the length of each strip, creating blotches of ink.

The diagram below shows what was observed after some time.



- a) ~~Diapers keep babies dry.~~ Based on the above observation, which material, A, B, C or D, is the most suitable for making bath towel? [1]

- b) Give a reason for your answer in (a). [1]

- c) Which material would be suitable for making a raincoat? [1]

End of Section B



Pei Chun Public School

Science SA1 2014

Section A

Q1) 1	Q2) 3	Q3) 2	Q4) 4	Q5) 5
Q6) 3	Q7) 2	Q8) 3	Q9) 3	Q10) 1
Q11) 3	Q12) 4	Q13) 1	Q14) 4	Q15) 2

Section B

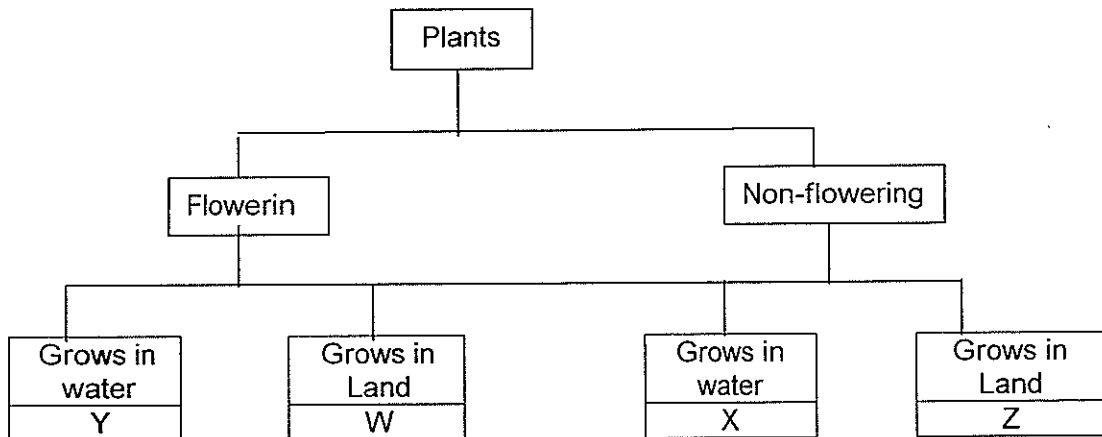
- 16) (a) They belong to the animals group.
 (b) Both animals have scales.

- 17) (a) B has a strong stem and B does not have flowers.
 (b) (i)

Statement	True?
Its fruits have many seeds.	/
It has a strong stem.	/
It has flowers.	

(ii) D

18)



- 19) (a) D
 (b) Animal D is a mammal but the others are birds.
 (c) It uses its moist skin to breathe underwater.
- 20) (a) It reproduces by spores.
 (b) No. Bread mould cannot make its own food, but plants can.
 (c) Y, X, Z
- 21) (a) He was trying to test the strength of the materials.
 (b) R
 (c) Only R can hold 15 weights without breaking.
- 22) (a) D
 (b) D could absorb the most amount of water.
 (c) B

