



# RAFFLES GIRLS' PRIMARY SCHOOL

## SEMESTRAL ASSESSMENT (1) 2015

Section A	36
Section B	24
Your score out of 60 marks	
Parent's signature	

Name : \_\_\_\_\_ Index No: \_\_\_\_\_ Class: P3 \_\_\_\_\_

7 May 2015

**SCIENCE**

Attn: 1h 15min

### SECTION A (18 x 2 marks)

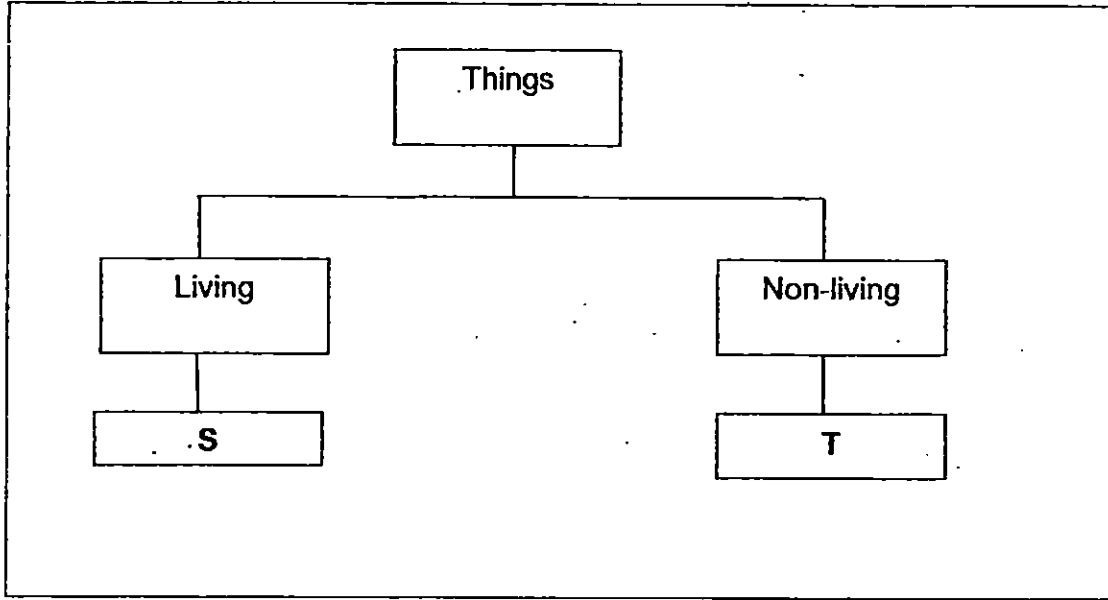
For each question from 1 to 18, four options are given.

One of them is the correct answer. Make your choice (1, 2, 3 or 4).

Shade the correct oval (1, 2, 3 or 4) on the Optical Answer Sheet (OAS) provided.

1. Which one of the following is not a characteristic of living things?
  - (1) Living things grow.
  - (2) Living things reproduce.
  - (3) Living things have body coverings.
  - (4) Living things need air, food and water to stay alive.
  
2. Which one of the following shows that living things respond to changes around them?
  - (1) The fire alarm sounded when there was a fire.
  - (2) The female cat gave birth to three kittens this morning.
  - (3) Min Min cried loudly when she was pricked by a needle.
  - (4) The tomato plant has grown taller over the last two days.

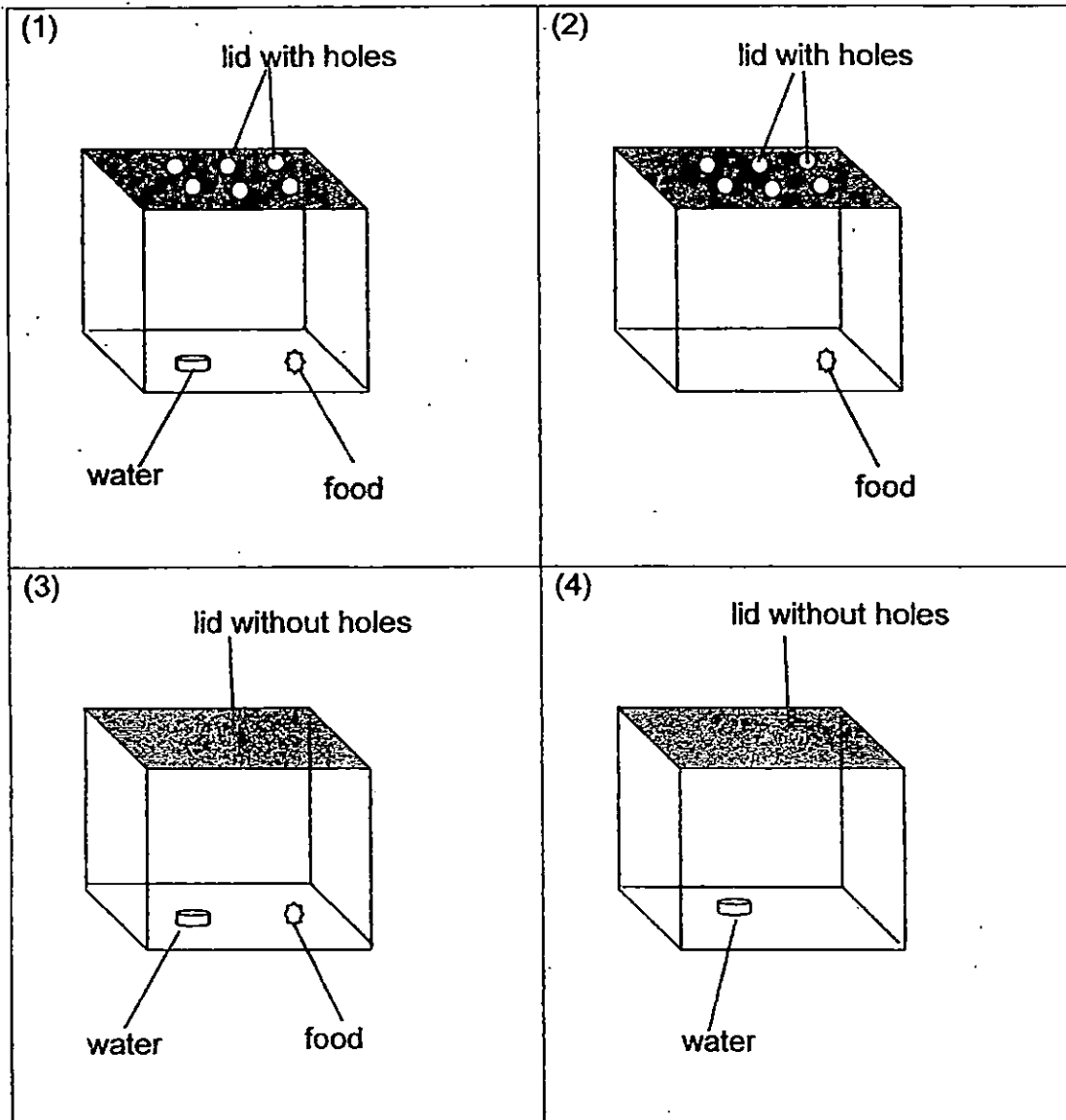
3. In the diagram below, Tommy classified some things into 2 groups namely S and T.



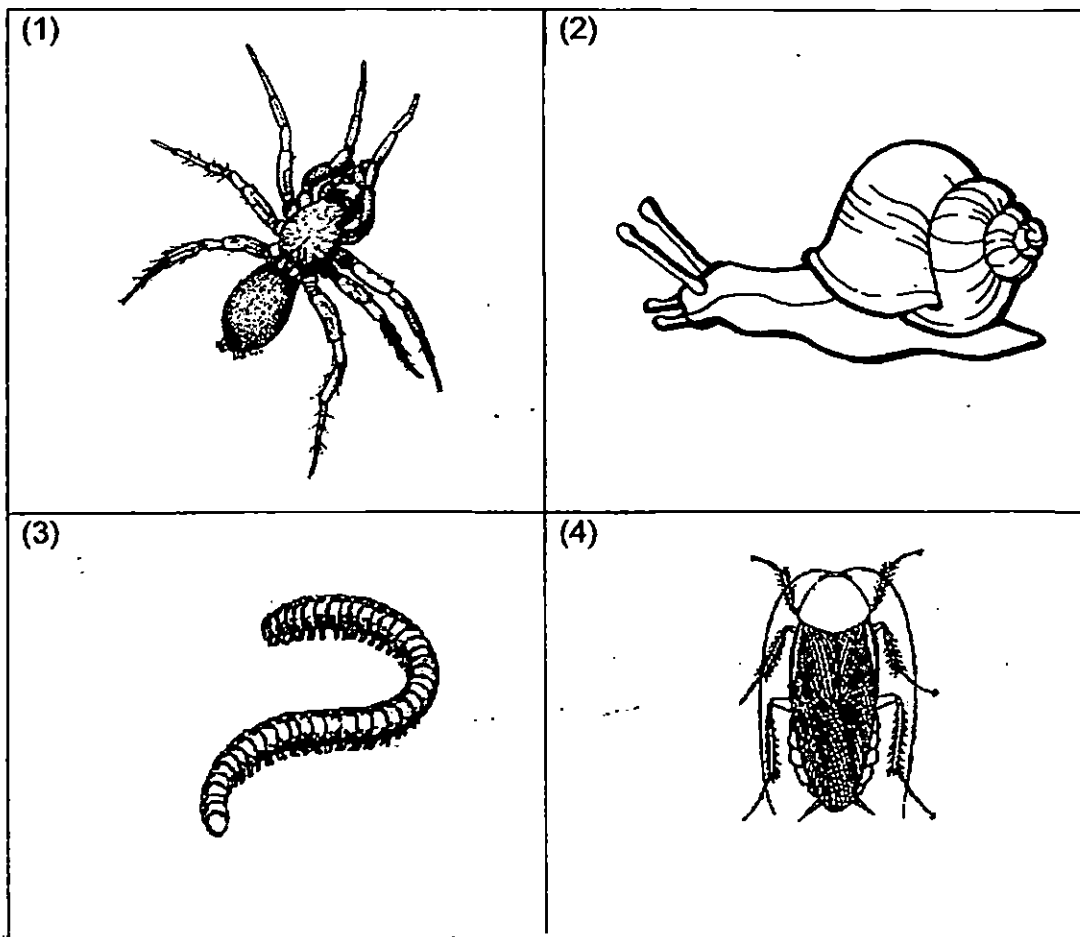
Which one of the following sets did Tommy classify correctly?

	<b>Group S</b>	<b>Group T</b>
(1)	ant	ball
(2)	paper	cow
(3)	horse	snake
(4)	lizard	baby

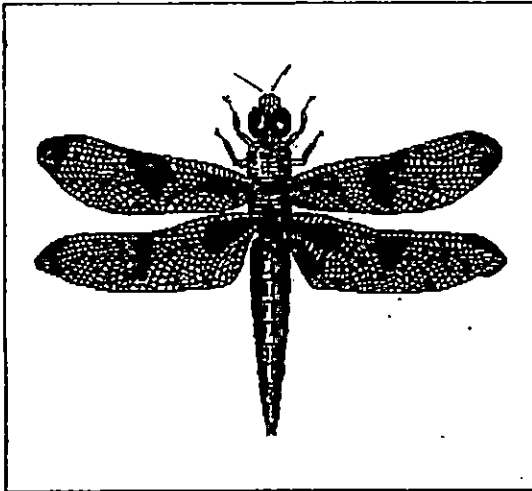
4. Which one of the following containers should John choose to keep his hamster so that it can live for the longest period of time?



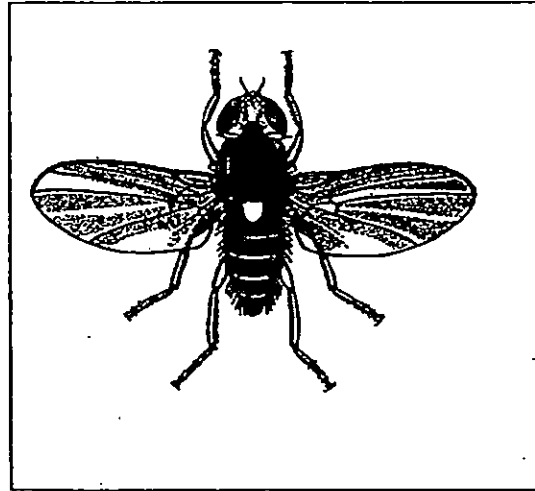
5. Which one of the following animals is an insect?



6. Study Animals P and Q as shown in the diagrams below.



P

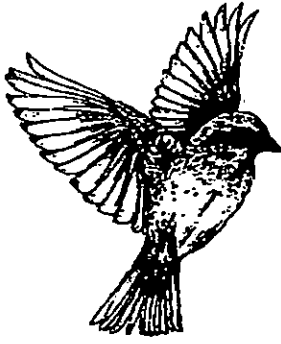


Q

Which one of the following statements about Animals P and Q is not correct?

- (1) Both have 3 body parts.
- (2) Both have 3 pairs of legs.
- (3) Both have 2 pairs of wings.
- (4) Both have 1 pair of feelers.

7. The diagrams below show some animals.



A



B



C

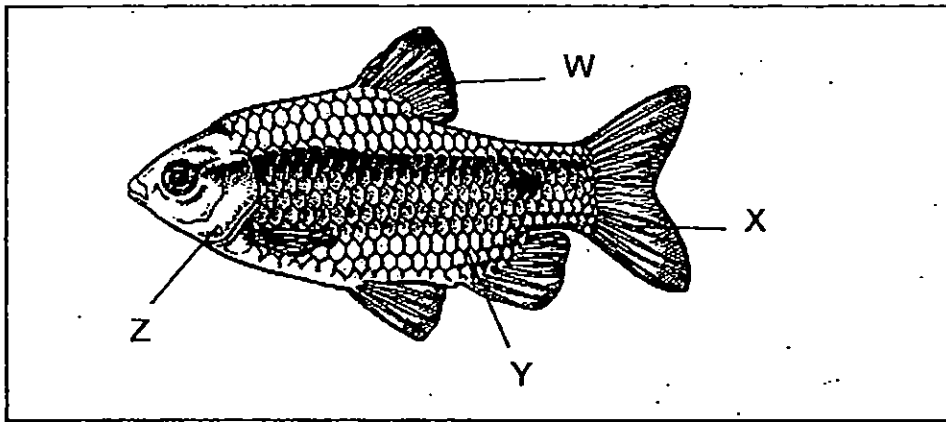


D

Animals A, B and C are grouped together based on a common characteristic. Animal D does not belong to the group because it \_\_\_\_\_.

- (1) has hair
- (2) has a tail
- (3) does not have wings
- (4) does not have feelers

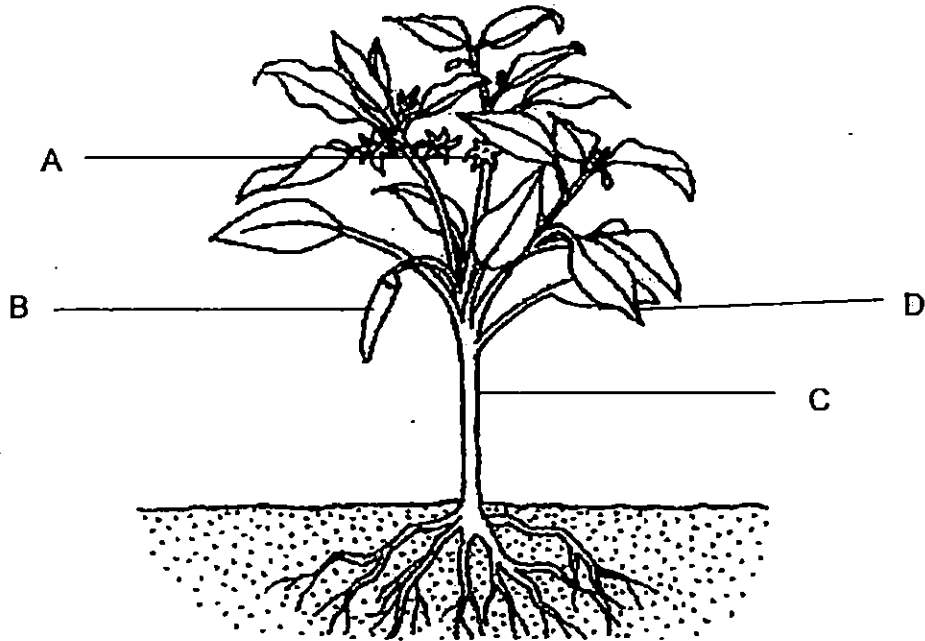
8. The diagram below shows a fish with its labelled parts.



Which of the following part(s) of the fish help(s) it to swim?

- (1) Z only
  - (2) W and X only
  - (3) W and Y only
  - (4) X and Z only
9. Which one of the following statements about plants is true?
- (1) Fungi are non-flowering plant.
  - (2) Non-flowering plants reproduced from seeds.
  - (3) Flowering plants produce flowers when they become adult plants.
  - (4) Plants cannot move from place to place so they do not respond to changes.

10. The diagram below shows a plant with its labelled parts.



Based on the diagram above, which of the following part(s) of the plant help(s) to conclude that it is a flowering plant?

- (1) A only
- (2) D only
- (3) A and B only
- (4) B and C only

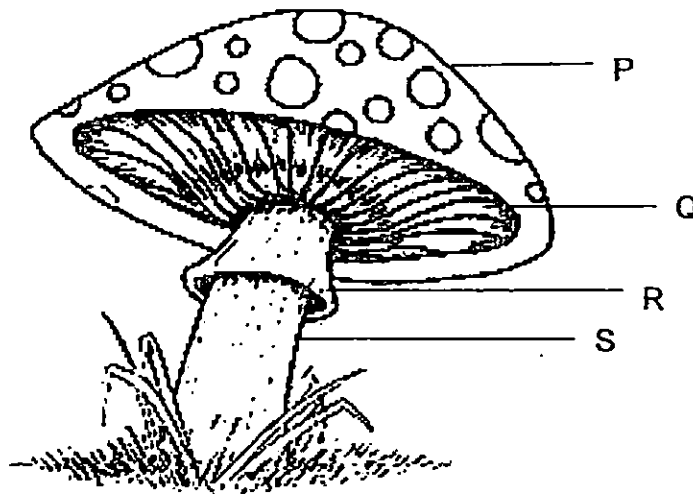


11. Which of the following statement(s) describe(s) the similarities between plants and fungi?

- A Both reproduce by seeds.
- B Both make their own food.
- C Both have a stem, roots and leaves
- D Both respond to changes around them.

- (1) C only
- (2) D only
- (3) B and C only
- (4) C and D only

12. The diagram below shows a fungus.  
Where are the spores of the fungus stored?



Where are the spores of the fungus stored?

- (1) P
- (2) Q
- (3) R
- (4) S

13. Four children made the following statements.

Ali : All fungi are harmful.

Bob : Fungi feed on things which are dead or alive.

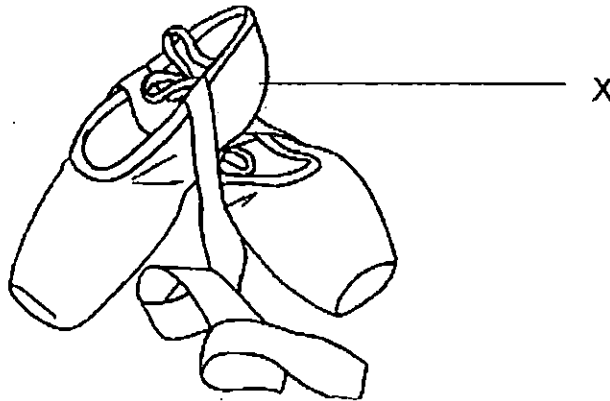
Cai Li : Some fungi can only be seen under a microscope.

Dolly : Fungi have spores which are very light.

Which of the children made the correct statement(s) about fungi?

- (1) Ali only
- (2) Cai Li and Dolly only
- (3) Ali, Bob and Cai Li only
- (4) Bob, Cai Li and Dolly only

14. The diagram shows pair of ballet shoes.



Which of the following is/are the properties of material X taken into consideration when it is used to make the ballet shoes?

- A flexible
  - B can float on water
  - C can allow all light to pass through
- (1) A only
  - (2) B only
  - (3) A and B only
  - (4) A and C only

15. Peter conducted an experiment by bending objects A and B as shown below.

Before the experiment:



A



B

After the experiment:



A

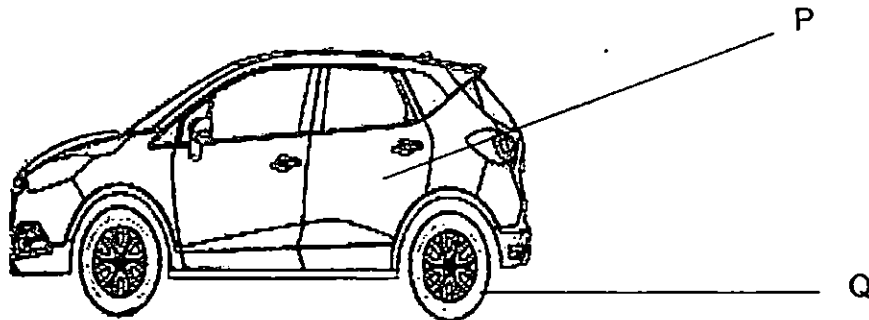


B

Which one of the following statement about objects A and B is true?

- (1) A is stronger than B
- (2) B is stronger than A
- (3) A is more flexible than B
- (4) B is more flexible than A

16. The diagram below shows Mr. Tan's car which he drives to work daily.



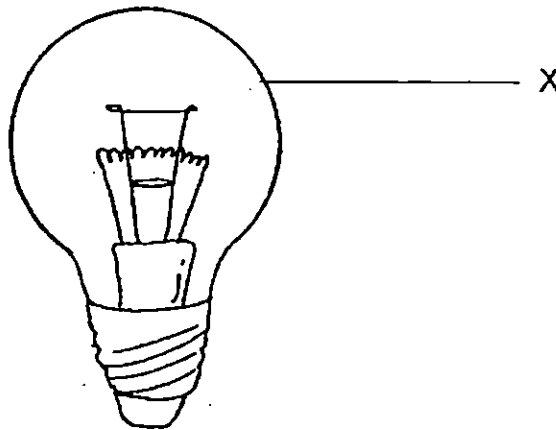
Which one of the following sets of materials is most suitable to make parts P and Q of the car?

	P	Q
(1)	plastic	wood
(2)	wood	plastic
(3)	metal	rubber
(4)	rubber	metal

17. The table below shows the properties of each material: A, B, C and D.

Material	Properties
A	sink in water and transparent
B	float on water and not transparent
C	not flexible and not transparent
D	not flexible but transparent

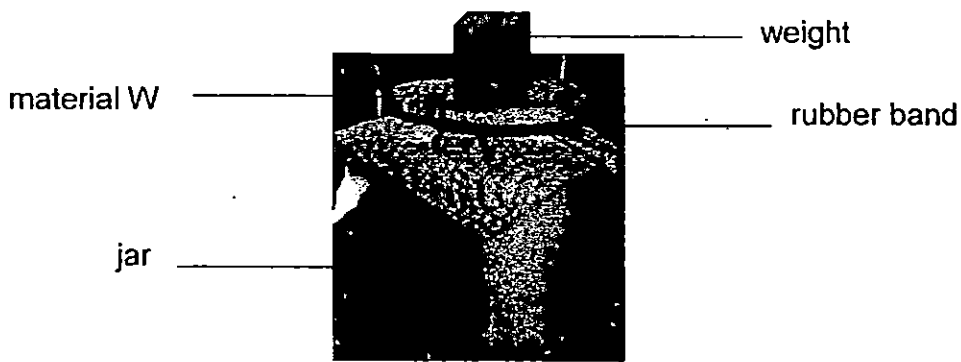
Which one of the materials, A, B, C or D is used to make part X labelled in the diagram below?



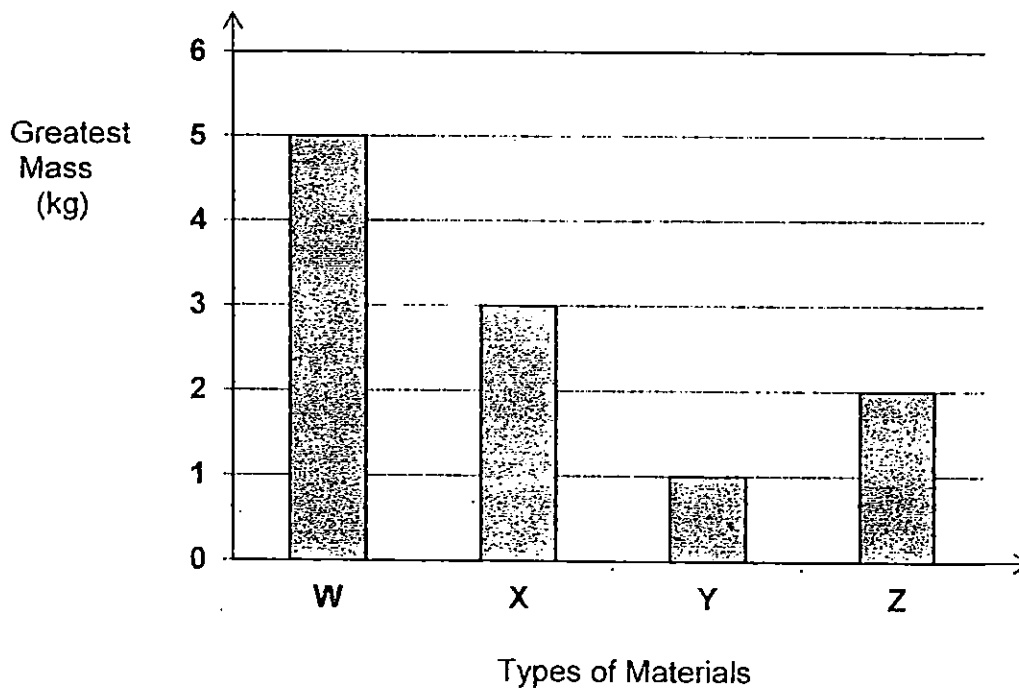
- (1) A and B only
- (2) A and D only
- (3) B and D only
- (4) C and D only

18. Adam wanted to find out which type of material, W, X, Y, Z, is the strongest. He cut each type of material into sheets of the same size.

He covered the brim of a jar using a sheet of material W and secured it with a rubber band. He added weights on the sheet of material W until it started to tear. He recorded the greatest mass that it could hold just before it tore. He repeated the experiment as shown in the diagram below using material X, Y and Z.



The graph below shows the greatest mass of each material it could hold just before it tore.



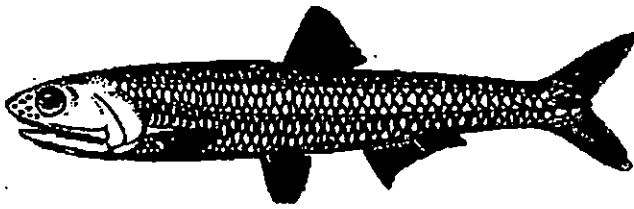
Which one of the following statements is true?

- (1) W is the weakest
- (2) W is stronger than X
- (3) Y is the strongest
- (4) Y is the stronger than Z

**SECTION B (24 marks)**

For questions 19 to 30, write your answers clearly in the spaces provided. The number of marks available is shown in brackets [ ] at the end of each question or part question.

19. Study Animals P, Q, R and S below carefully.



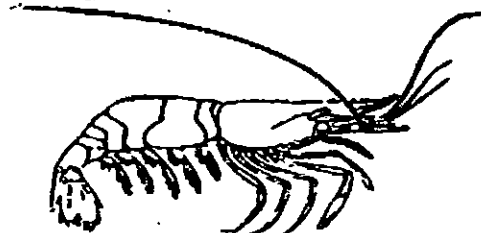
P



Q



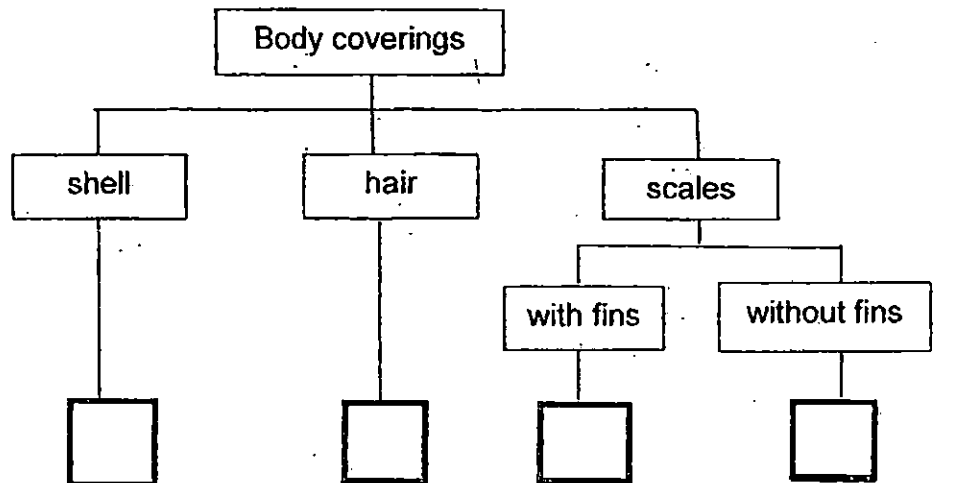
R



S

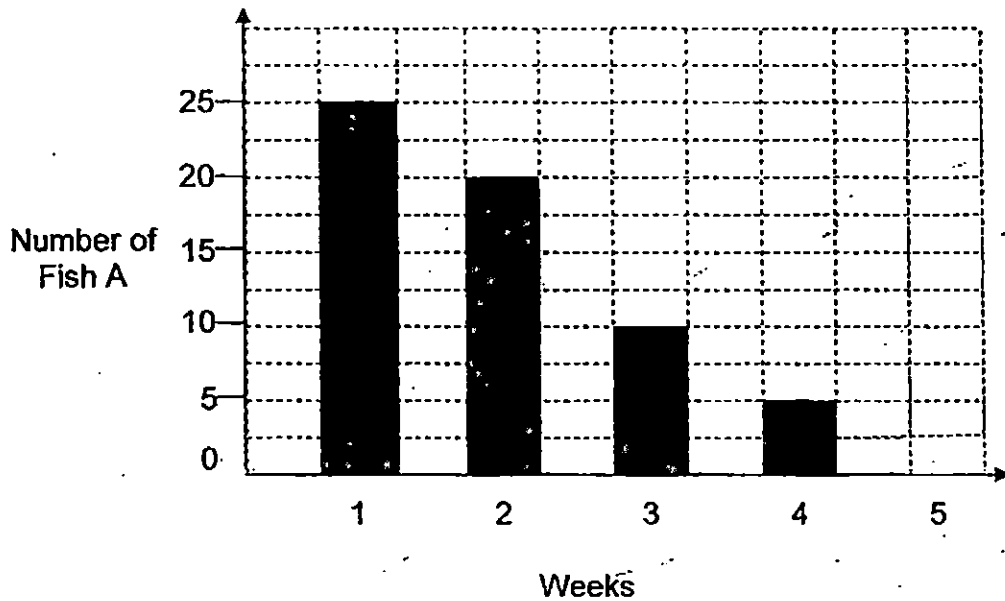
The animals above are classified based on their body coverings. Write the letters P, Q, R and S in the correct boxes below.

[2]



Score	2
-------	---

20. Bob kept 25 male and female Fish A in his fish tank. No additional Fish A were put in the tank for the next 5 weeks. Fish A were infected by a disease. The graph below shows the number of Fish A observed over 4 weeks.



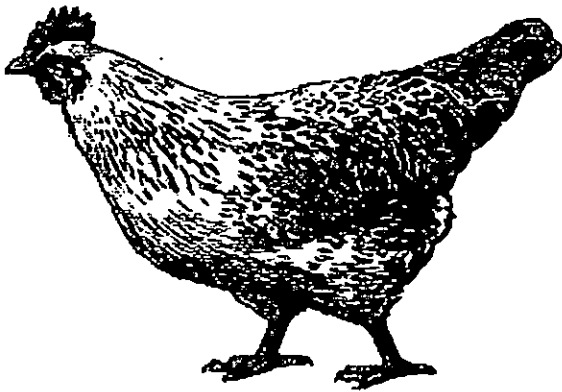
- (a) Some Fish A were left in Week 5.  
In the bar graph above, **draw** a bar to show the likely number of fish left in Week 5. [1]
- (b) Bob treated the infected Fish A.  
By Week 10, the number of Fish A has increased by twenty.  
Give a possible reason for the increase in the number of Fish A. [1]

---

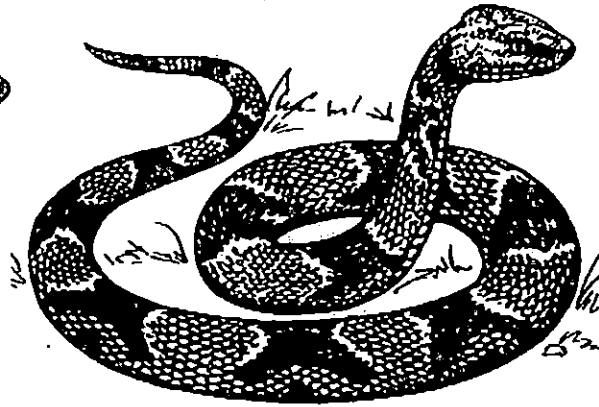
---

Score	2
-------	---

21. Study Animals P and Q as shown in the diagrams below.



Animal P



Animal Q

Based on your observations, state two different observable physical characteristics between Animal P and Animal Q. [2]

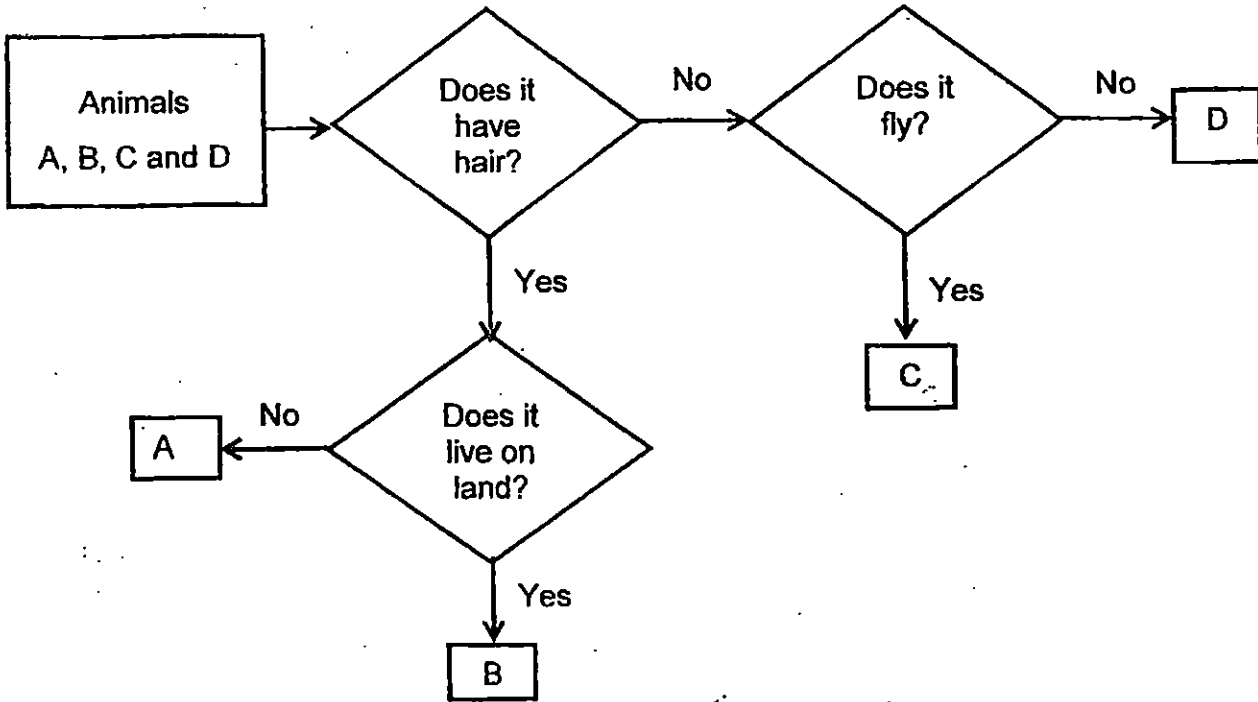
(Do not compare sizes, colours, body shapes and patterns)

<b>Difference 1</b>	<hr/> <hr/> <hr/> <hr/>
<b>Difference 2</b>	<hr/> <hr/> <hr/> <hr/>

Score	2
-------	---



22. Study the classification chart below carefully.



Based on the information above, answer the following questions:

(a) Name two characteristics of Animal C.

[2]

<b>Characteristic 1</b>	<hr/> <hr/>
<b>Characteristic 2</b>	<hr/> <hr/>

(b) Which 2 animals, A, B, C and/or D are mammals? Give a reason for your answer.

[1]

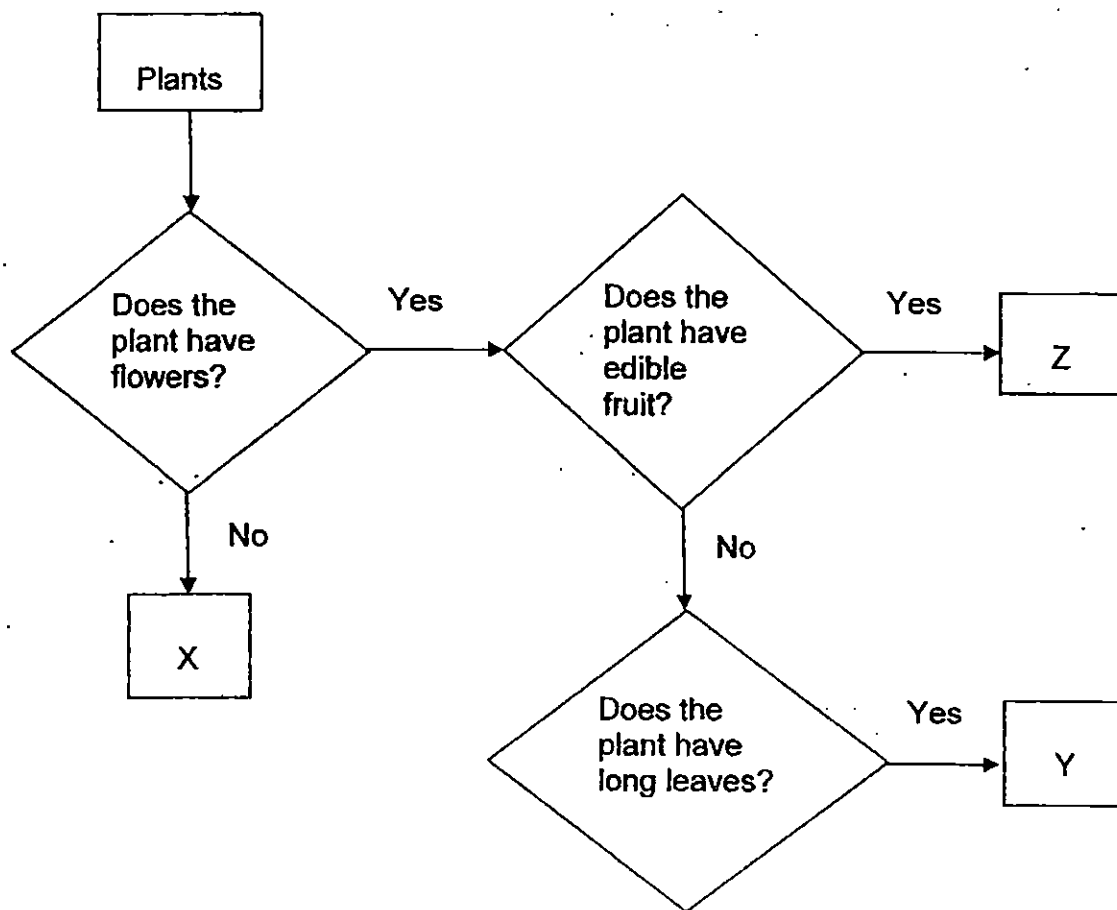
---



---

Score	3
-------	---

23. Study the flow chart below carefully.



Based on the information provided above, write down 2 characteristics of plant Z.

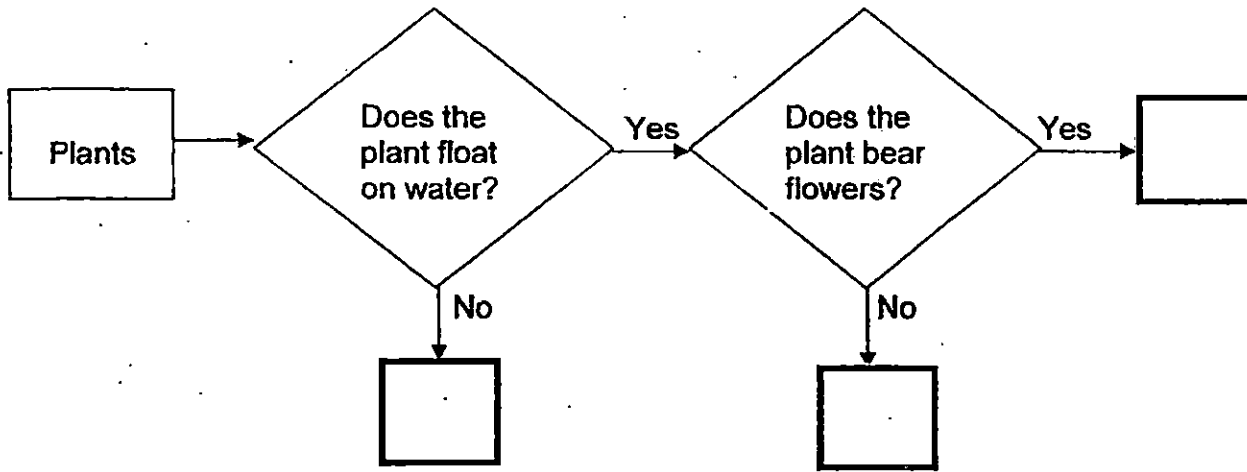
[2]

Characteristic 1 : \_\_\_\_\_

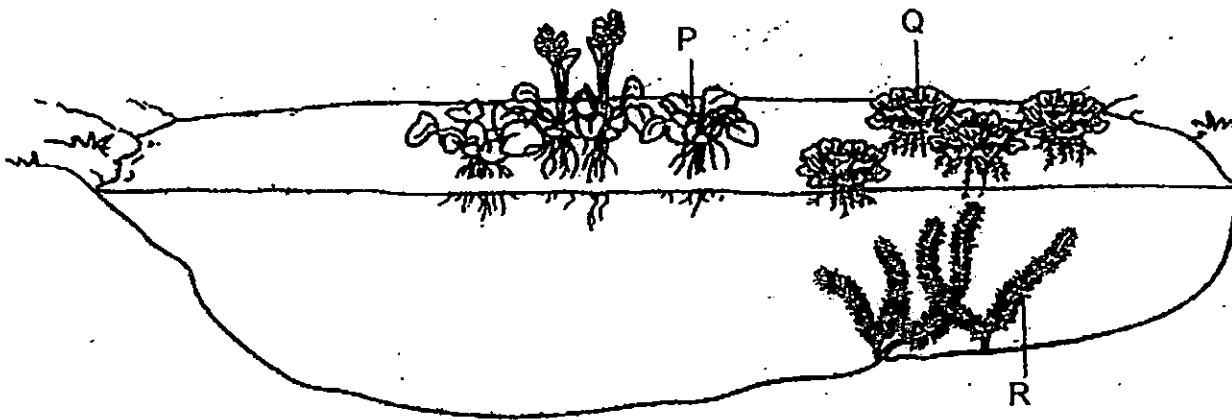
Characteristic 2 : \_\_\_\_\_

Score	2
-------	---

Study the flow chart below.



The diagram below shows plant P, Q and R found in a pond.



Based on the information in the diagram above, write the letter P, Q and R in the correct box in the flow chart. [2]

Score	2
-------	---

25.

The diagram below shows Plant W growing upwards on the trunks of trees.



Plant W

(a) Explain why the leaves of Plant W grow upwards.

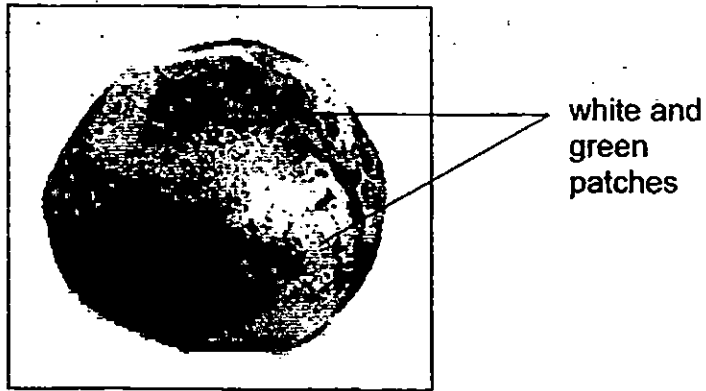
[2]

---

---

Score	2
-------	---

26. The diagram below shows a rotten orange.



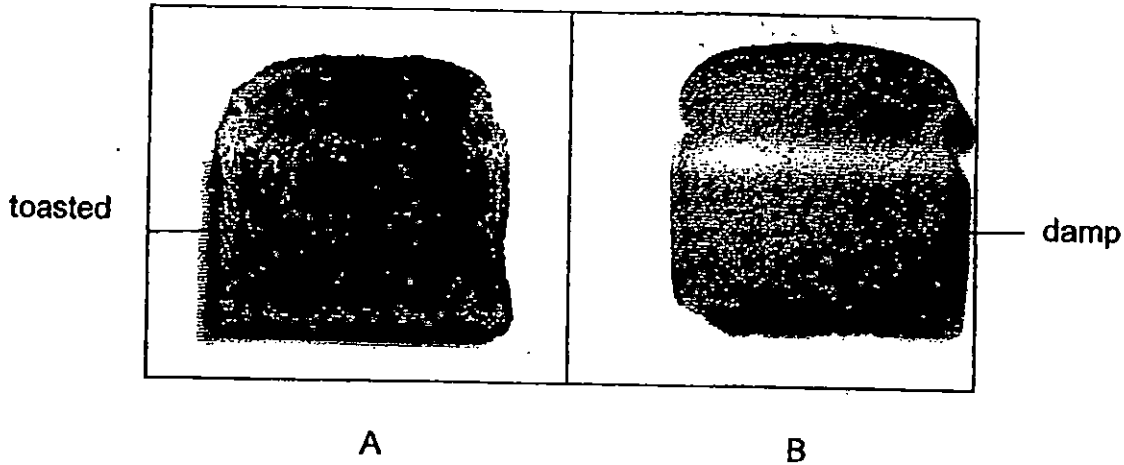
(a) White and green patches are found to be micro-organisms which feed on rotten fruit. [1]

Name the micro-organisms.

---

Score	1
-------	---

27. Mina left the two pieces of bread, A and B in a warm, dark cabinet for 5 days.

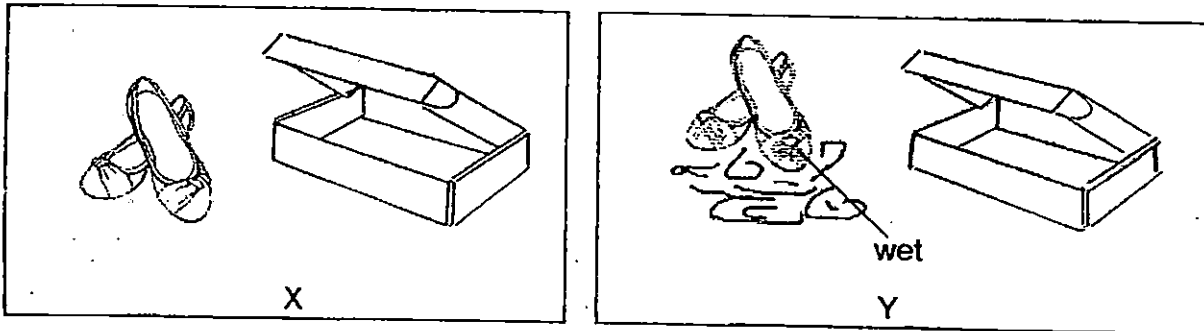


After 5 days, Mina observed that some bread moulds were formed on Bread B.

- (a) Based on the information above, name the condition necessary for the bread mould to grow on the bread. [1]

Presence of \_\_\_\_\_

- (b) Mina had two similar pairs of leather shoes, X and Y as shown below.



Mina kept the two pairs of leather shoes in two separate shoe boxes and left them in the shoe cabinet. After one week, Mina found some mould growing on one of the pairs of the leather shoes.

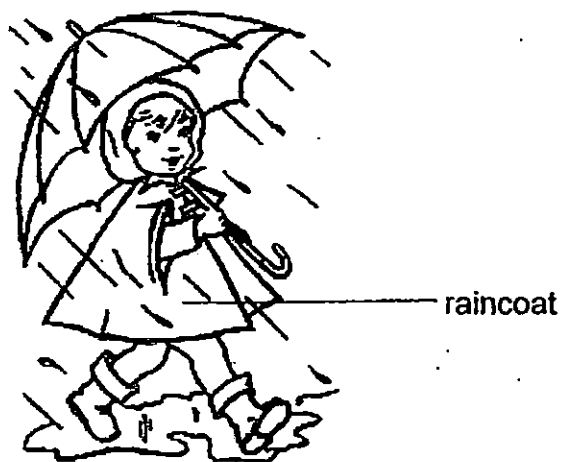
Which pair of leather shoes, X or Y would mould be seen growing?  
Give a reason for your answer.

---

---

Score	2
-------	---

28. The diagram below shows a raincoat.



(a) Name one suitable material used to make a raincoat [1]

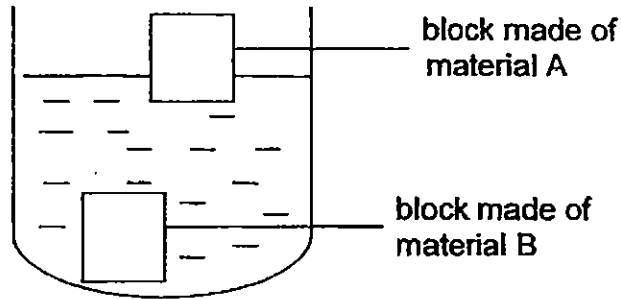
---

(b) State the property of the material in your answer in (a) which will prevent the girl from being drenched in the rain. [1]

---

Score	2
-------	---

29. Two identical blocks, each made of a different material, A and B, are placed in a beaker of water as shown in the diagram below.

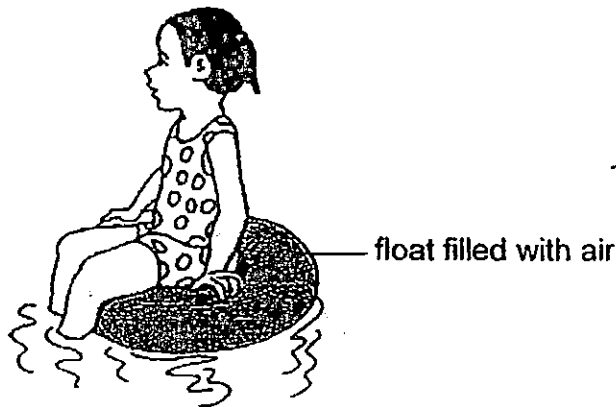


- (a) Based on the diagram above, which material, A or B, is used to make the float as shown below? Explain your answer. [1]

---

---

---



- (b) Suggest a suitable material to make the float. [1]

---

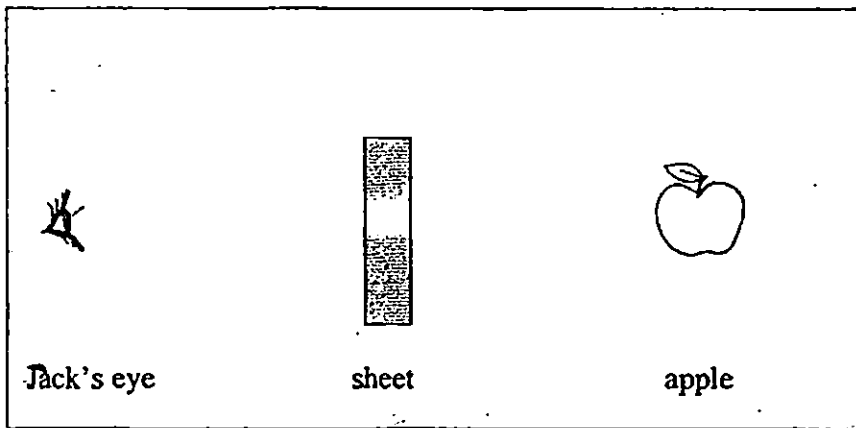
---

Score	2
-------	---



30.

Jack placed a sheet made of a different material, X, Y and Z, between his eyes and an apple, one at a time, as shown in the diagram below.

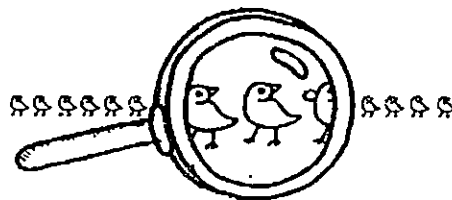


He recorded his observations in a table below.

Material of sheet	Observation
X	Could see the apple most clearly
Y	Could not see the apple clearly
Z	Could not see the apple at all

- (a) Which one of the materials, X, Y or Z, is most suitable for making magnifying lens shown below? Explain your answer.

[1]



---

---

- (b) Which one of the materials, X, Y or Z, is most suitable for making curtain that blocks out all the light? Explain your answer.

[1]

---

---

End of Paper

Score	2
-------	---



## EXAM PAPER 2015

LEVEL : PRIMARY 3

SCHOOL : RAFFLES GIRLS PRIMARY SCHOOL

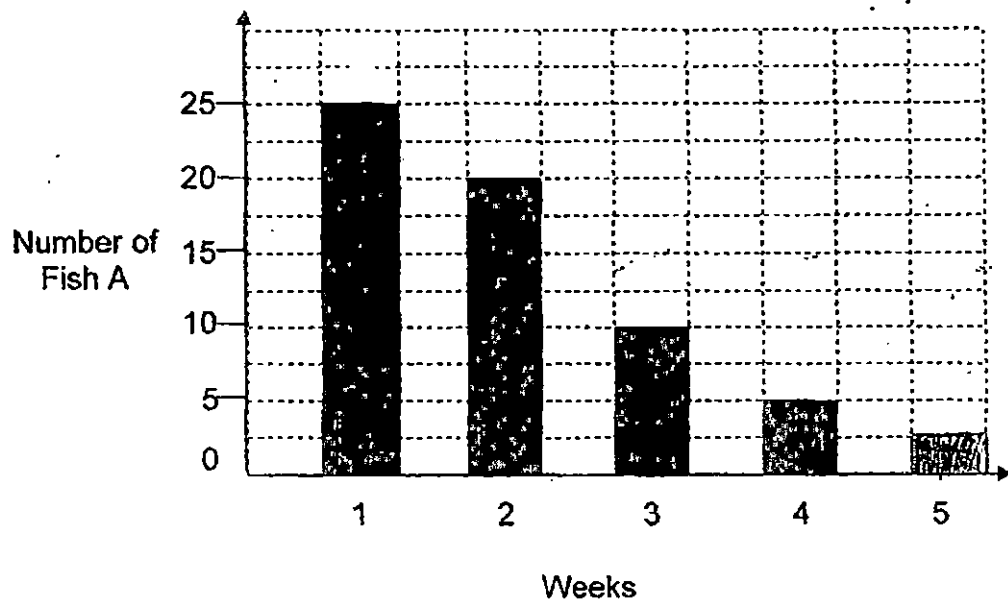
SUBJECT : SCIENCE

TERM : SA1

Q 1	Q 2	Q 3	Q 4	Q 5	Q 6	Q 7	Q 8	Q 9	Q 10
3	3	1	1	4	3	3	2	3	3
Q 11	Q 12	Q 13	Q 14	Q 15	Q 16	Q 17	Q 18		
2	2	2	1	3	3	3	2		

Q19. Shell - S / Hair - Q / with fins - P / without fins - R

Q20a. SEE PICTURE      Q20b. Fish A reproduced so that the number of fish A increased.



Q21. Difference 1 - Animal P has a beak but Q does not.

Q21. Difference 2 - Animal Q has scales but animal P has feathers.

Q22a. Characteristic 1 - does not have hair.

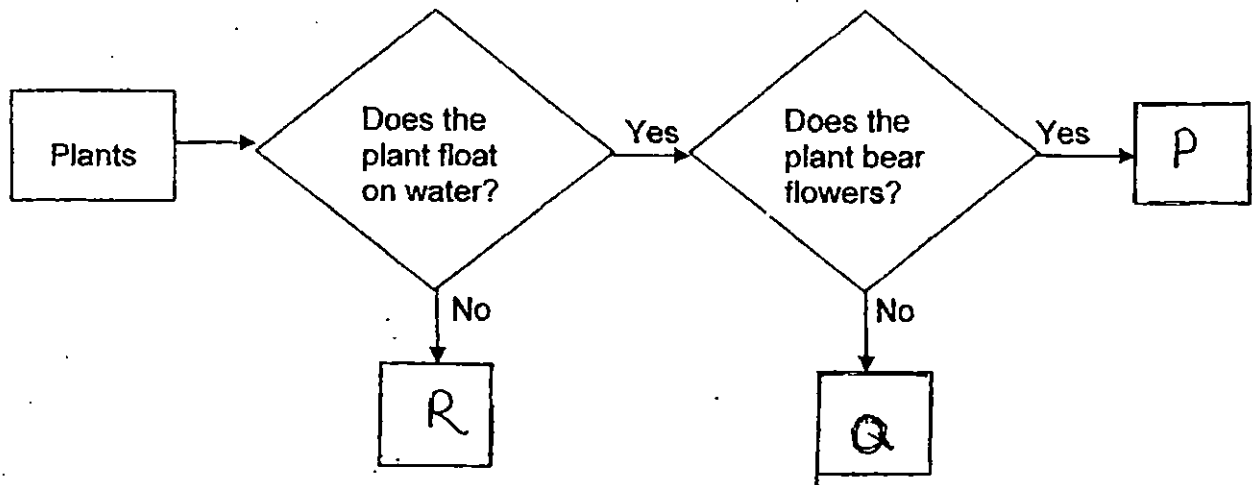
Q22a. Characteristic 2 - It can fly

Q22b. A and B. Both have hair.

Q23. Characteristic 1 : It bears flowers.

Q23. Characteristic 2: It has edible fruits.

Q24. SEE PICTURE



Q25. Plant W need a support to grow upwards and sunlight to make food.

Q26. Fungi      Q27a. Presence of water      Q27b. Y. Water was present.

Q28a. Plastic      Q28b. Waterproof.

Q29a. Material A floats on water.      Q29b. Plastic

Q30a. X. It allows most light to pass through.

Q30b. Z. It does not allow light to pass through it.