

Pei Chun Public School
Semestral Assessment 1 – 2016
Science
Primary 3

Name : _____ () Date : 10 May 2016

Class : Pri. 3 ()

Science Teacher : _____ Time : 50 min

Section A (15 × 2 marks)

For questions 1 to 15, choose the most suitable answer and shade its number (1, 2, 3 or 4) on the Optical Answer Sheet (OAS) provided.


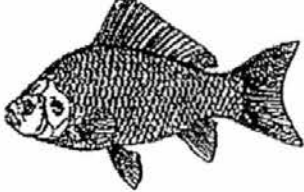

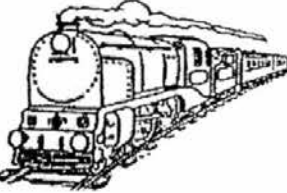
1. The table below shows the height of Sarah from the age of five years old to ten years old.

age (years)	height (cm)
5	110
6	114
7	119
8	125
9	129
10	135

From the information given in the table, we can conclude that Sarah is a living thing because she _____.

- (1) grows
- (2) reproduces
- (3) responds to changes
- (4) needs food to stay alive

2. The table below shows how things can be grouped.

Group A	Group B
 <p data-bbox="494 548 582 593">plant</p>  <p data-bbox="502 952 566 996">fish</p>	 <p data-bbox="1013 548 1093 593">book</p>  <p data-bbox="1005 952 1077 996">train</p>

Which of the following can be put in group A?

(1)



baby

(2)



frying pan

(3)






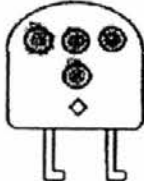
robot

(4)



watch

3. The table below shows how four creatures can be grouped.

Group A	Group B
 	 

The creatures are grouped according to _____.

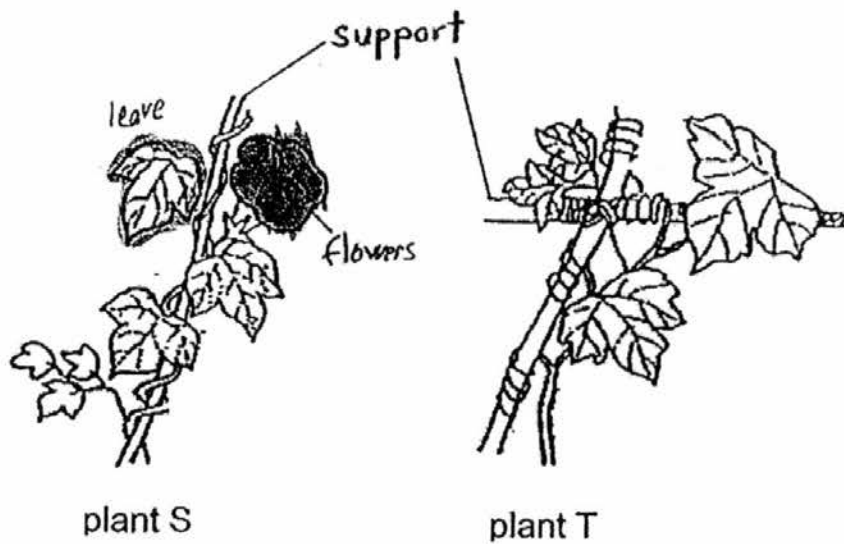
- (1) the shape of their bodies
 - (2) whether they have a mouth
 - (3) the number of legs they have
 - (4) the number of eyes they have
4. The table below gives information on three plants, X, Y and Z. A tick (✓) shows that the plant has the characteristic.

Characteristics	X	Y	Z
has a strong stem	✓	✓	
reproduce by seeds	✓		
reproduce by spores		✓	✓

Which of the plants is a/are **non-flowering** plant(s)?

- (1) X only
- (2) Y only
- (3) X and Y only
- (4) Y and Z only

5. The diagram below shows some plants.



Based on the diagram, what do plants S and T have in common?

- A : They have leaves.
- B : They have flowers.
- C : They have a weak stem.
- D : Their stem enables the plant to stand upright.

- (1) C only
- (2) A and C only
- (3) A, B and C only
- (4) A, B and D only

6. The table below shows how some leaves can be grouped.

	oval-shaped	heart-shaped
smooth edge	P	Q
jagged edge	R	S

Which group do leaf C and leaf D belong to?




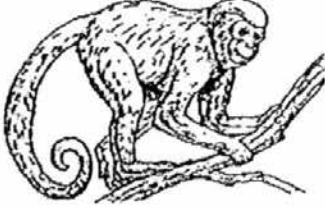


leaf C



leaf D

	leaf C	leaf D
(1)	Q	S
(2)	R	P
(3)	P	Q
(4)	S	R

7. The table below shows how four animals can be grouped.

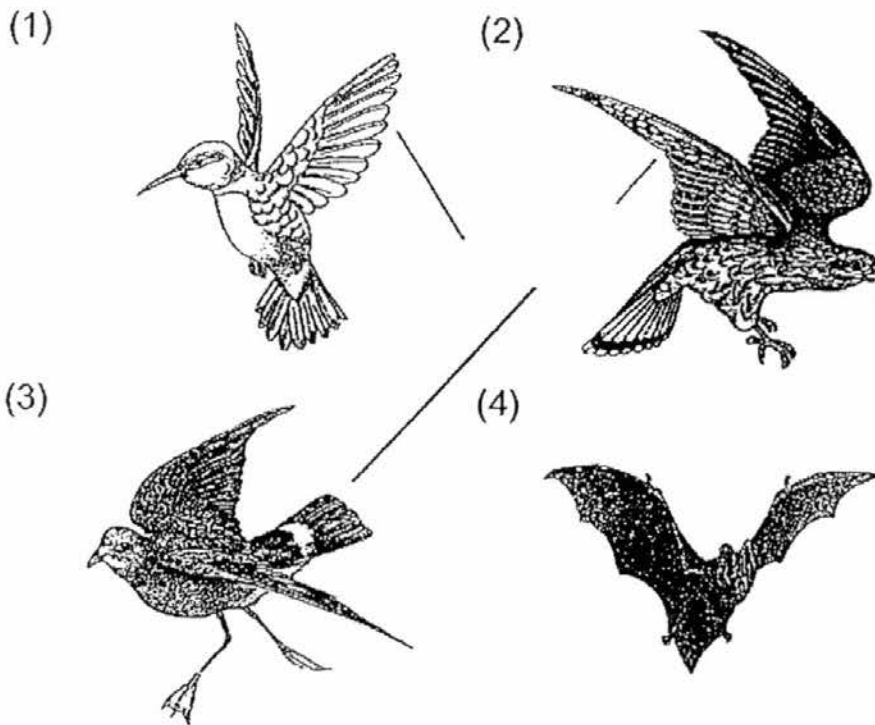
Animals	
lay eggs	give birth
 dolphin	 monkey
 chicken	 giraffe

Which of the animals above has been classified wrongly?

- (1) chicken
- (2) dolphin
- (3) giraffe
- (4) monkey

8. The diagrams below show four animals.

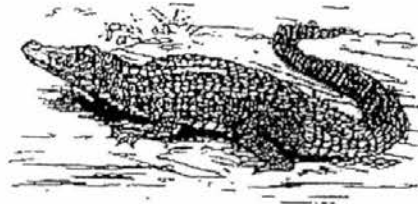
Which animal does not belong to the group?



9. The diagrams below show two animals.



animal A



animal B

Which of the following best describes animal A and animal B?

	animal A	animal B
(1)	has short tail	has long tail
(2)	has moist skin	has dry scales
(3)	lives in water only	lives on land only
(4)	eats mosquitoes only	eats fish only

10. Four pupils made the following statements about the characteristics of yeast.

Joe : Yeast is microscopic.

Siti : Yeast and bacteria are fungi.

Mei Xin : Yeast grows faster in cold places.

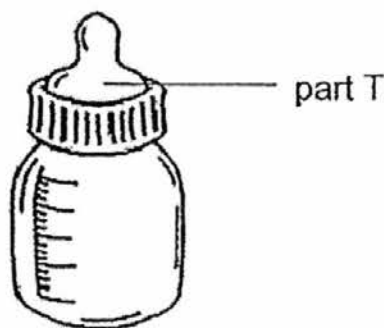
Devi : Yeast needs air and water only to grow.

Which pupil is correct?

- (1) Joe
 - (2) Siti
 - (3) Mei Xin
 - (4) Devi
11. The table below shows the properties of materials A, B, C and D. A tick (✓) shows that the material has the property.

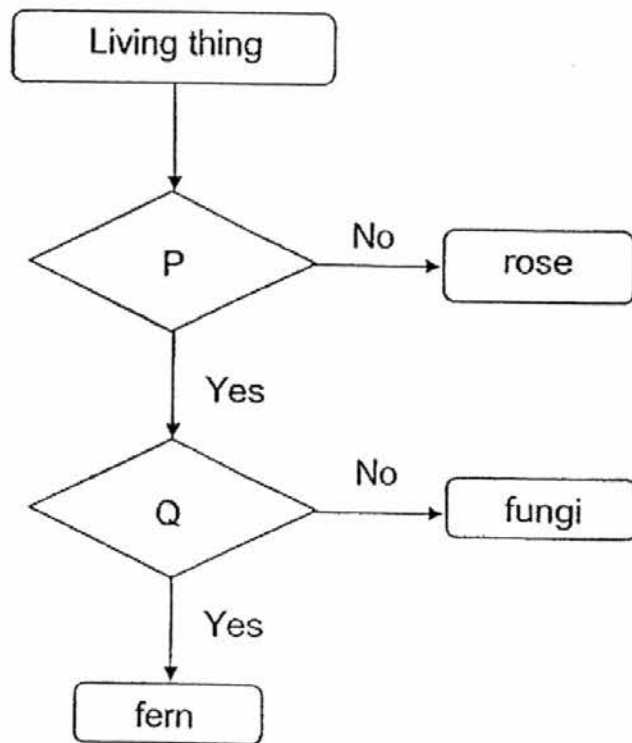
materials	flexible	waterproof
A		✓
B	✓	
C		
D	✓	✓

Which of the materials above is the most suitable for making part T of a milk bottle?



- (1) material A
- (2) material B^X
- (3) material C
- (4) material D

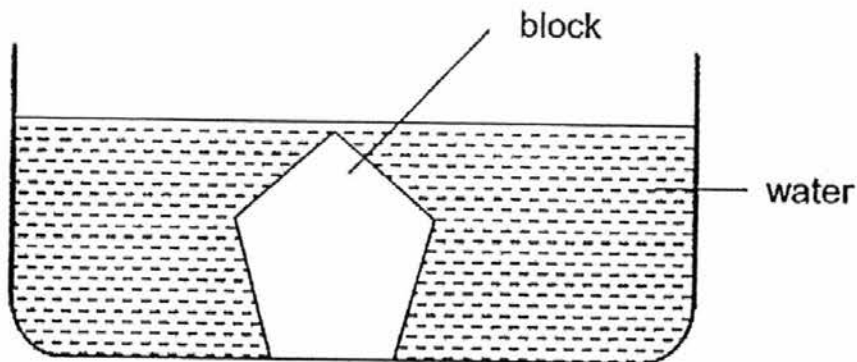
12. Ken had three living things. He classified the living things with the help of the chart below.



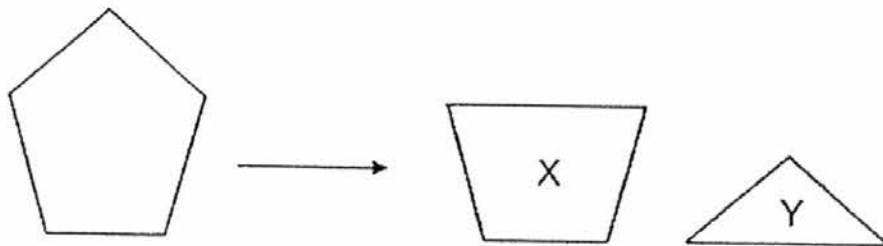
What are questions P and Q?

	P	Q
(1)	Is it a flowering plant?	Can it make its own food?
(2)	Can it make its own food?	Is it a non-flowering plant?
(3)	Does it reproduce by spores?	Can it make its own food?
(4)	Can it make its own food?	Does it reproduce by spores?

13. Jia Xuan had a solid block shown below. When she placed it in water, it sank to the bottom of the tank as shown in the diagram below.

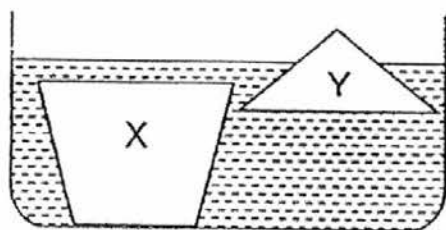


She cut the solid block into two pieces, X and Y. She then placed both pieces into the tank of water and observed the positions of X and Y in the water.

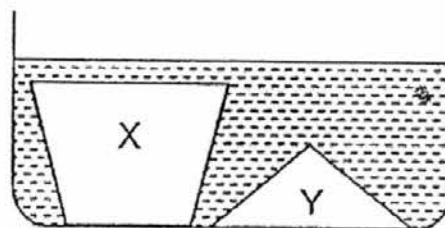


Which of the following diagrams correctly shows the positions of X and Y?

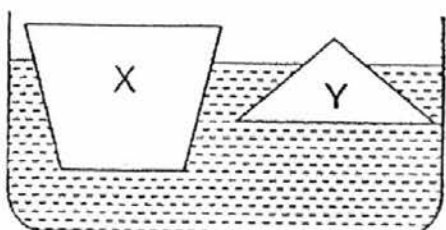
(1)



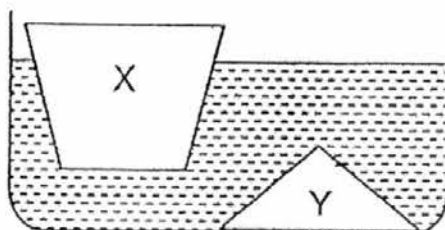
(2)



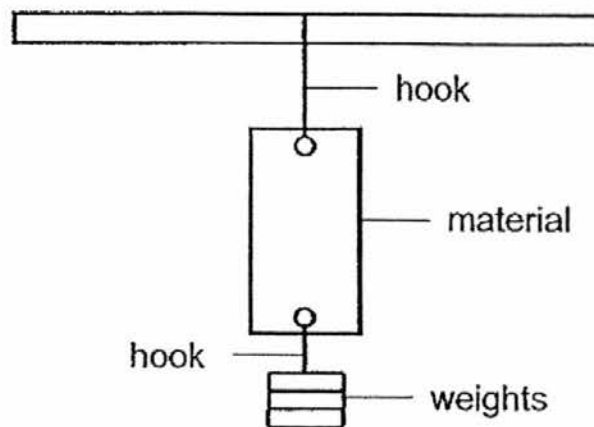
(3)



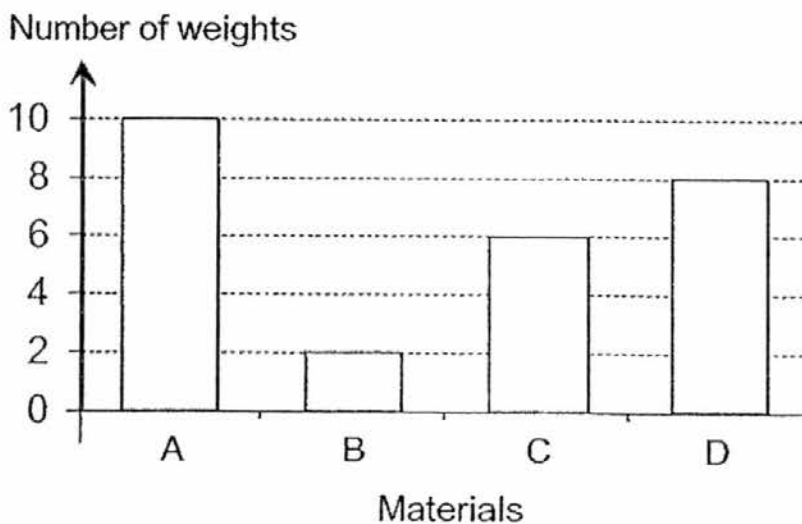
(4)



14. Sally conducted an experiment with four types of materials, A, B, C and D. She placed each piece of the material, one at a time onto a hook as shown in the set-up below.



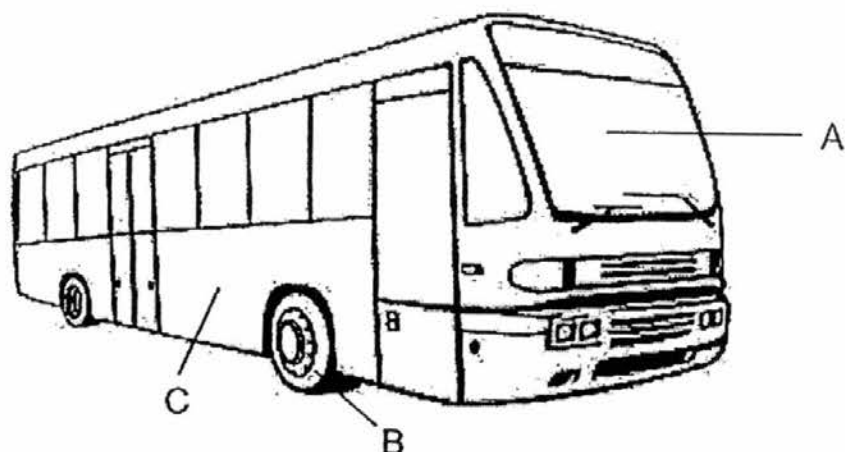
Then, she added weights one at a time onto the other end of the plastic until it tore. She recorded the least number of weights needed for each material to tear in a graph below.



Based on her experiment, which of the following statements is true?

- (1) B is the strongest.
- (2) D is stronger than C.
- (3) B is the least flexible.
- (4) A is more flexible than C.

15. The diagram below shows a bus.



The parts labelled A, B and C are made of certain materials. The table below shows the reason why they are chosen.

Part	Why this material is chosen
A	It does <u>not</u> allow light to pass through it.
B	It is waterproof and flexible.
C	It is waterproof and strong.

Which of the parts are matched to the correct reasons?

- (1) A and B only
- (2) A and C only
- (3) B and C only
- (4) A, B and C

End of Section A

Pei Chun Public School
Semestral Assessment 1 – 2016
Science
Primary 3

Name : _____ ()

Class : Pri. 3 ()

Date : 10 May 2016

Time : 50 min

Science Teacher : _____

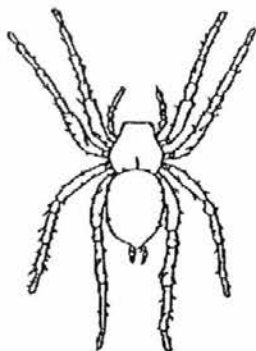
Parent's signature: _____

Section A	30
Section B	20
Total	50

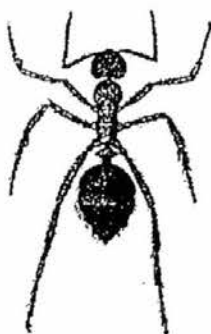
Section B (20 marks)

For questions 16 to 22, write your answers in the spaces provided.

16. The diagrams below show three animals.



E



F



G


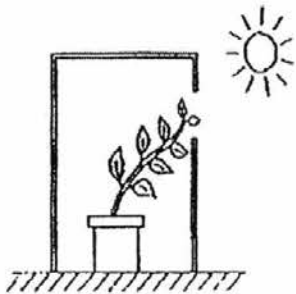
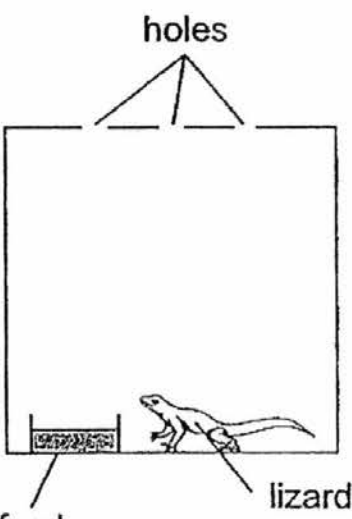
a) Which animal, E, F or G, is **not** an insect? [1]

Animal _____

b) For your answer in (a), give a characteristic that shows that it is not an insect. [1]

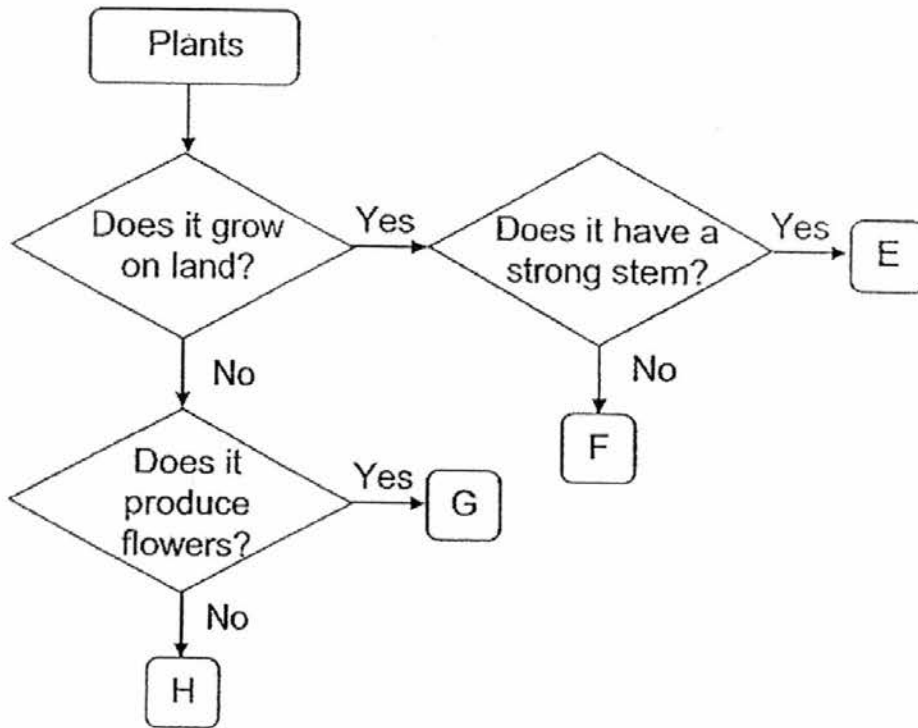
SCORE	
-------	--

17. State the correct characteristics of living things for the following observations. [3]

Observation	Characteristic
<p>(a) A cat gives birth to its kittens.</p> 	<p>Living things _____</p> <p>_____</p>
<p>(b) A plant grows towards sunlight.</p> 	<p>Living things _____</p> <p>_____</p>
<p>(c) The lizard was alive after two weeks.</p> 	<p>Living things _____</p> <p>_____</p>

SCORE	
-------	--

18. The flowchart below shows the classification of plants.



Letters E, F, G and H represent four different plants.

a) Based on the flowchart, state two characteristics of plant G. [1]

Characteristic 1: _____

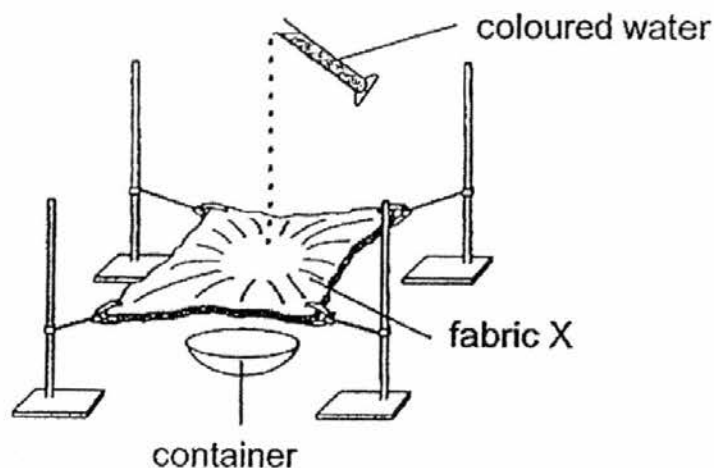
Characteristic 2: _____

b) Based on the flowchart, state a similarity between plants E and F. [1]

c) Based on the flowchart, state a difference between plants E and H. [1]

SCORE	
-------	--

19. A piece of fabric, X, was placed in the set-up as shown below. 20 ml of coloured water was poured onto it and its increase in mass was measured after a few minutes.



The experiment was repeated using fabrics Y and Z made of the same size and thickness. The table below shows the results of the experiment.

Fabric	Increase in mass (g)
X	0
Y	25
Z	13

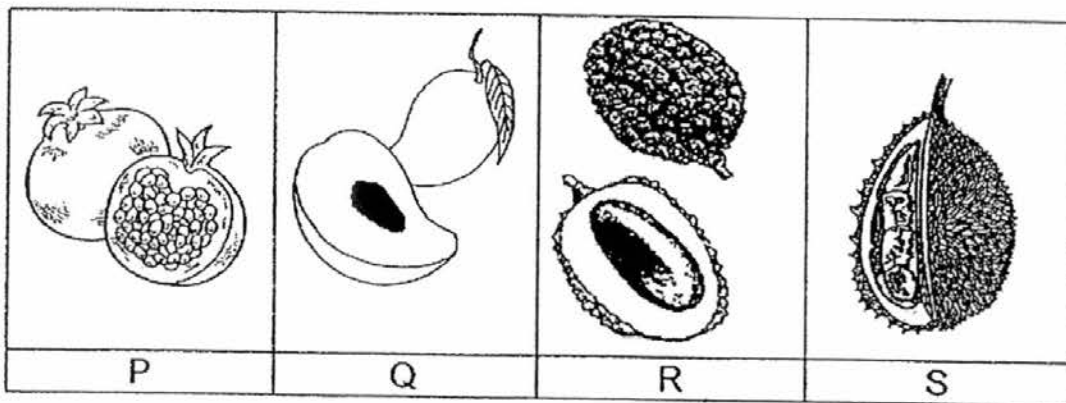
- a) State the property of the material that was tested in this experiment. [1]

- b) Which of the following fabrics, X, Y or Z, is the most suitable for making a raincoat? Give a reason for your answer. [1]

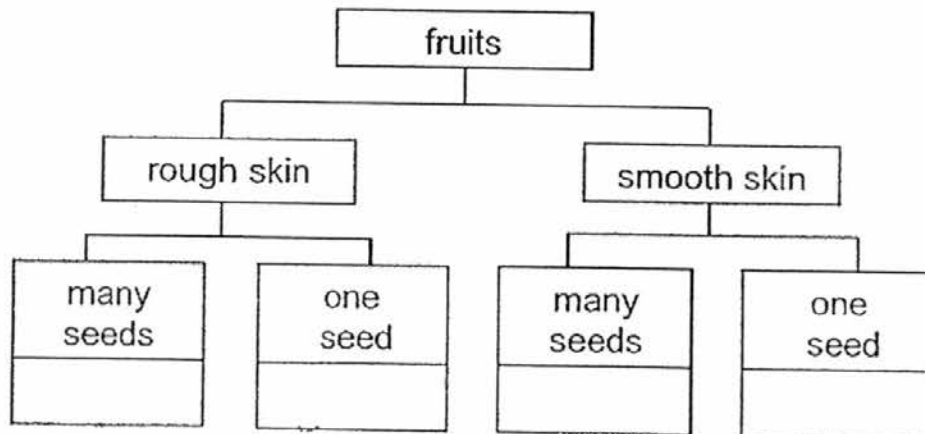
- c) Which of the following fabrics, X, Y or Z, is the most suitable for making bath towels? Give a reason for your answer. [1]

SCORE	
-------	--

20. The diagram below shows four fruits.



a) Based on your observation of the fruits above, classify them into the classification diagram shown below. Complete the diagram by writing the correct letters, P, Q, R and S, in the boxes provided. [2]



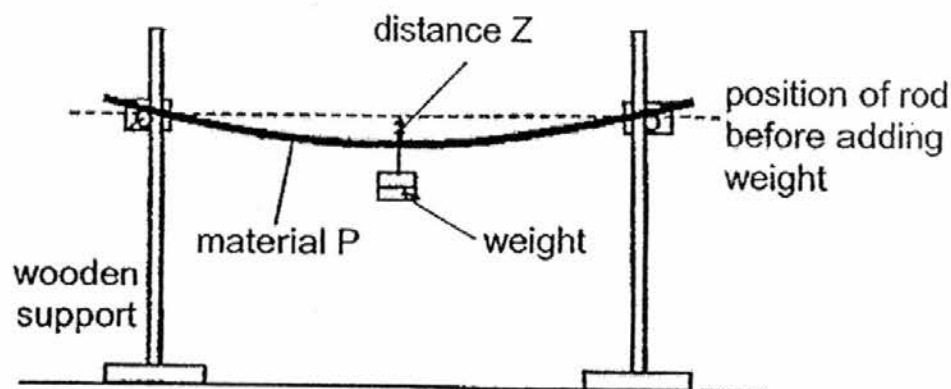
b) The picture below shows a coconut plant. Based on your observation of the diagram, which of the following statements is/are true? Put a tick (✓) in the correct box(es). [1]



Statement	True
The coconut fruits grow in a bunch.	<input type="checkbox"/>
The coconut tree is a flowering plant.	<input type="checkbox"/>
The stem of the coconut tree is strong.	<input type="checkbox"/>

SCORE	<input type="text"/>
-------	----------------------

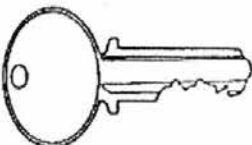

21. Rashid carried out an experiment on material P using the set-up shown below. She measured distance Z at the middle of the rod after hanging a 350 g weight on it.



She repeated the experiment using materials Q and R but of the same length and thickness as material P. Her results are shown below.

Material	Distance Z (cm)
P	10
Q	0
R	3

- a) Using the information collected in the table above, match each object to its possible material used, P, Q or R, and give a reason for your choice. [2]

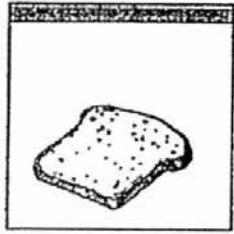
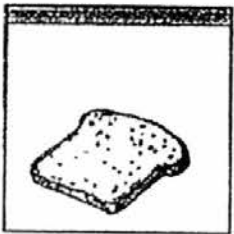
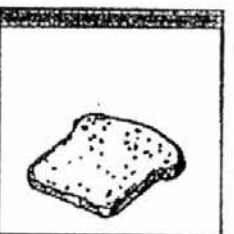
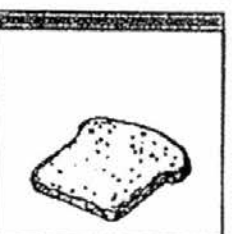
Object	Choice of material / reason
(i) Key 	Most suitable material : _____ Reason: _____ _____ _____
(ii) Plastic Bag 	Most suitable material : _____ Reason: _____ _____ _____

(question continues on the next page)

SCORE

- b) Name the property that Rashid tested in her experiment. [1]

22. Jie Ying conducted an experiment. She took four slices of bread from the same loaf of bread and placed them under the following conditions as listed in the table below.

bread A	bread B	bread C	bread D
			
moist bread placed on a table	moist bread placed in the refrigerator	cooled toasted bread placed on a table	cooled toasted bread placed in the refrigerator

- a) After five days, which bread, A, B, C or D, will have the most amount of mould growing on it? [1]

- b) Explain your answer in (a). [2]

End of Section B

Set by : Mrs Magdeline Lien & Ms Parvin Kaur D/O Harbhajan Singh
Vetted by: P3 Science teachers

SCORE	
-------	--

EXAM PAPER 2016 (P3)

SCHOOL : PEI CHUN

SUBJECT : SCIENCE

TERM : SA1

Q1	Q2	Q3	Q4	Q5	Q6	Q7	Q8	Q9	Q10
1	1	3	4	2	4	2	4	2	1
Q11	Q12	Q13	Q14	Q15					
4	3	2	2	3					

16)a)E

b)It does not have three body parts / six legs.

17)a)Living thing can reproduced and have young.

b)Living thing respond to changes around them.

c)Living thing need air, food and water survive.

18)a)1)plant G does not grow on land.

2)plant G produces flowers.

b)Plants E and F both grow on land.

c)Plant E grows on land but plant H does not grow on land.

19)a)Waterproof.

b)X is more suitable for making a raincoat, a raincoat needs to be waterproof and X is waterproof.

c)Y is more suitable for making bath towels, a bath towel needs to absorb water and Y can absorb the most water.

20)a)S , R, P, Q

b)

✓
✓
✓

21)a)i)Q.

It is not flexible / the least flexible.

ii)P

It is the most flexible.

b)Flexibility.

22)a)Bread A.

b)Bread A has moisture and warmth.