

ANGLO-CHINESE SCHOOL (JUNIOR)



SEMESTRAL ASSESSMENT 2 (2009)
PRIMARY 3

SCIENCE
BOOKLET A

Tuesday

3 November 2009

1 hour 30 minutes

Name : _____ ()

Class : P 3 _____

INSTRUCTIONS TO PUPILS

DO NOT TURN OVER THE PAGES UNTIL YOU ARE TOLD TO DO SO

Follow all instructions carefully.
There are 20 questions in this booklet.
Answer **ALL** questions.

INFORMATION FOR PUPILS

The total marks for this booklet is 40.
The total time for Booklets A and B is 1 hour 30 minutes.
This question paper consists of 12 printed pages. (Inclusive of cover page)

Section A (40 marks)

For each question from 1 to 20, four options are given. One of them is the correct answer. Choose the correct option (1, 2, 3 or 4) and shade the correct oval on the Optical Answer Sheet (OAS).

1 The table shows how some things have been classified.

Group A	Group B
Aeroplane	Whale
Helicopter	Horse
Dragonfly	Ostrich

Which one of the following has been classified incorrectly?

- (1) Whale
- (2) Ostrich
- (3) Dragonfly
- (4) Helicopter


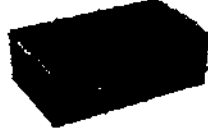


2 Each of the four friends wrote a statement about all living things.

- Jack** They move on their own.
- John** They make their own food.
- James** They need air, food and water.
- Joseph** They respond to their surroundings.

Who wrote an incorrect statement?





- (1) Jack
- (2) John
- (3) James
- (4) Joseph

3 Study the table below and identify a suitable heading.

Group A	Group B
	
	

	Group A	Group B
(1)	Edible	Inedible
(2)	Living Things	Non-Living Things
(3)	Once Alive	Never Alive
(4)	Makes its own food	Cannot make its own food

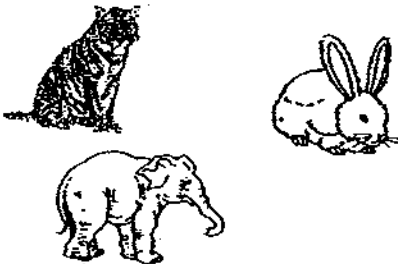
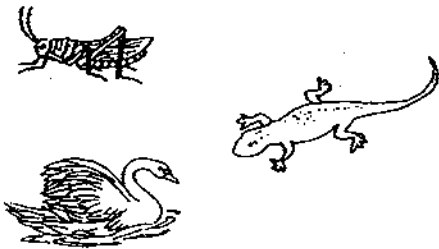
4 The table shows how some plants have been classified.

Group A		Group B	
Rose	Morning Glory	Heliconia	Frangipani
			

Which of the following flowers can be correctly placed in the groups above?

	Group A	Group B
(1)	Water Lily	Rafflesia
(2)	Jasmine	Orchid
(3)	Rafflesia	Ixora
(4)	Water Lily	Orchid

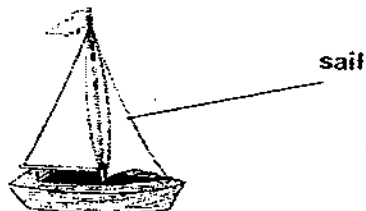
5 Ken classified some animals into two groups.

Group A	Group B
	

He grouped them according to _____

- (1) what they eat
- (2) where they live
- (3) their outer covering
- (4) how they reproduce

6 A group of pupils are investigating the best material to make the sail of a boat.

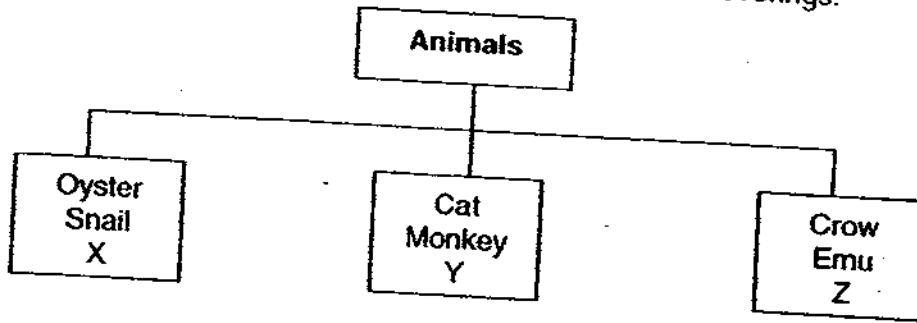


Different materials were used for the sail and the sailboats were placed along a starting line. The time taken for the sailboats to reach the finishing line were recorded.

Based on the results, which is the best material used to make the sail?

	Material used for sail	Time taken to reach the finishing line (seconds)
(1)	paper	25
(2)	plastic	40
(3)	canvas	60
(4)	aluminium foil	35

7 The animals below are grouped according to their outer coverings.



What animals can X, Y and Z be?

	Animal X	Animal Y	Animal Z
(1)	Lobster	Frog	Sparrow
(2)	Prawn	Lion	Bat
(3)	Jellyfish	Dog	Swan
(4)	Tortoise	Cow	Eagle

8 Mike found an interesting looking animal in his garden. It had a few legs. It could fly but it also had a hard outer covering. Mike probably found a/an _____

- (1) tilapia
- (2) mynah
- (3) squirrel
- (4) damselfly

9 The picture shows two things.



Jellyfish



Mushroom

Which one of the following states one similarity and one difference between them?

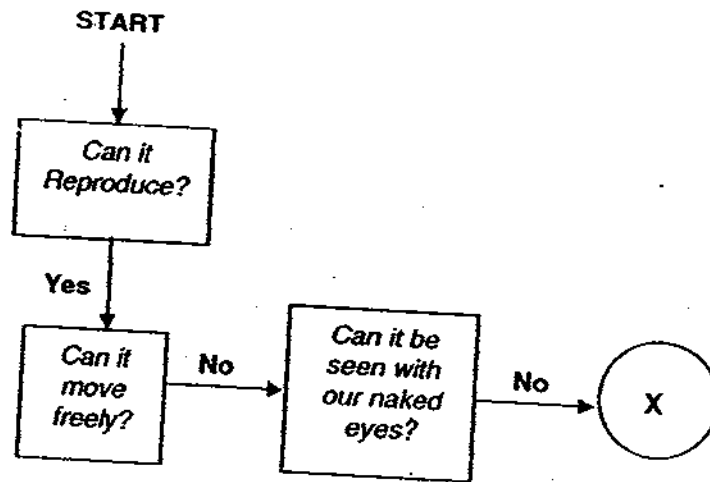
	Similarity	Difference
(1)	Both can be eaten.	The mushroom makes food but not the jellyfish.
(2)	Both cannot be eaten.	The mushroom reproduces by seeds but the jellyfish reproduces by laying eggs.
(3)	Both can reproduce.	The mushroom is a fungi but the jellyfish is an animal.
(4)	Both cannot reproduce.	The mushroom lives on land and the jellyfish lives in the water.

10 Yeast is an example of a _____

- A plant
- B fungus
- C bacteria
- D micro-organism

- (1) A and B only
- (2) B and D only
- (3) B, C and D only
- (4) A, C and D only

11 Study the flowchart



What can 'X' be?

- (1) Snail
- (2) Plant
- (3) Mould
- (4) Bacteria

12 Which of the following parts are associated with the respiratory system?

- (1) Smell and taste
- (2) Backbone and ribs
- (3) Windpipe and lungs
- (4) Blood vessels and heart

- 13 Mr Ang bought 2 pots of plants of the same type and size. Plant B had its leaves removed. He watered them daily and left them on a window sill.



Plant A



Plant B

Plant B had withered while Plant A was growing well. This shows that plants need _____

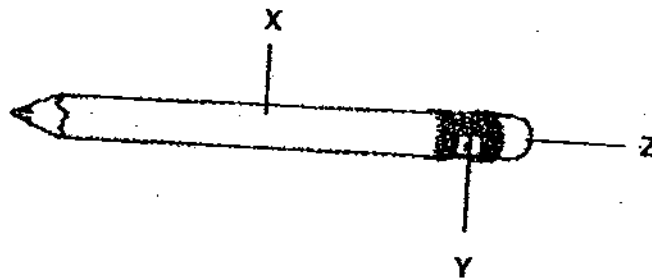
- (1) air to live
 - (2) sunlight to grow
 - (3) water to survive
 - (4) leaves to make food
- 14 The following is part of James' journal entry.

The sky was blue today. It was hot and I had a delicious ice-cream

Which sense organs were used?

- A Skin
 - B Ears
 - C Eyes
 - D Tongue
- (1) A and C only
 - (2) C and D only
 - (3) A, C and D only
 - (4) A, B, C and D

- 15 The diagram below shows a pencil. Which of the following correctly shows the materials used to make parts X, Y and Z?

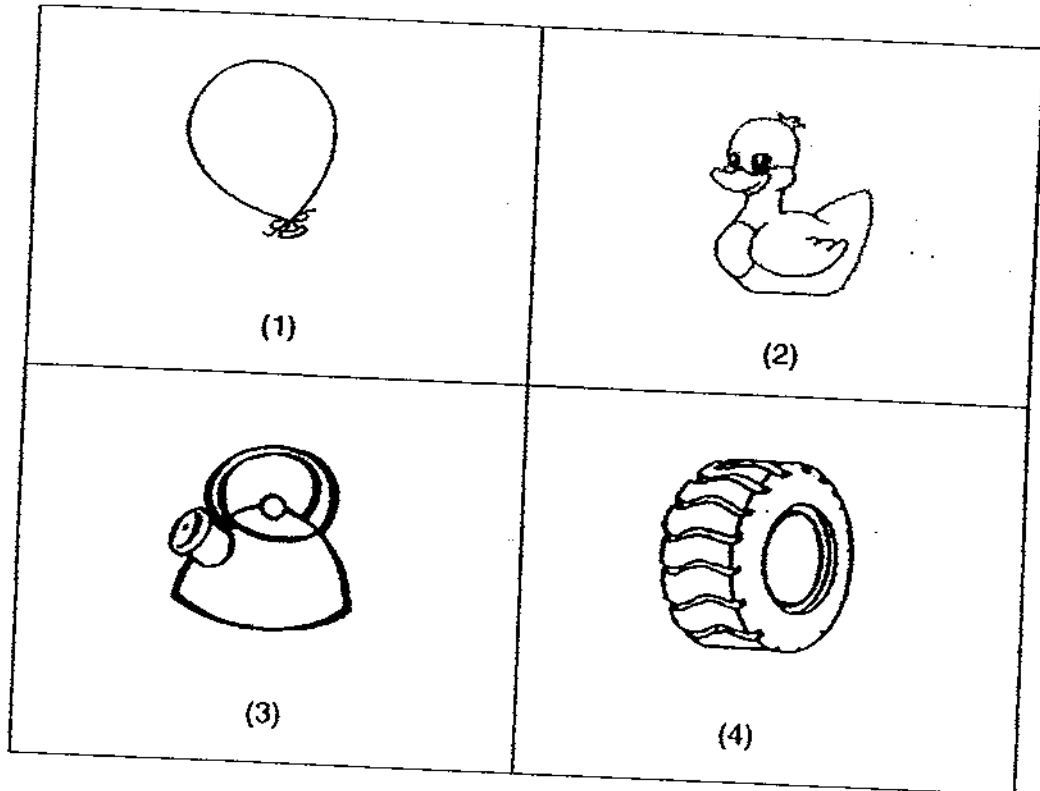


	X	Y	Z
(1)	plastic	rubber	wood
(2)	glass	wood	plastic
(3)	wood	metal	rubber
(4)	metal	plastic	glass

- 16 "You are stronger than I am," John commented to Mark.
They are comparing their _____ system.

- (1) skeletal
- (2) digestive
- (3) muscular
- (4) circulatory

17 Which of the following objects is unlikely to be made of rubber?

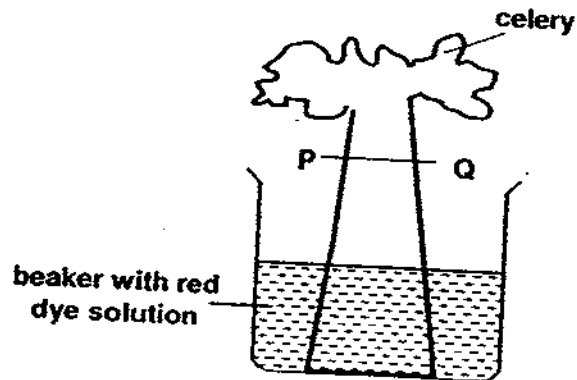


18 The parts of our bodies that allow us to move our arms and legs are our _____.

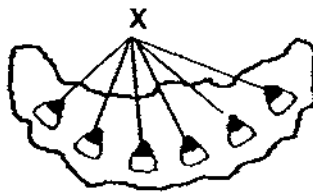
- A skin
- B joints
- C bones
- D muscles

- (1) C only
- (2) A and D only
- (3) C and D only
- (4) B, C and D only

- 19 Tom sets up the experiment as shown below. A cut celery stem was placed in a beaker of red dye solution for a day.



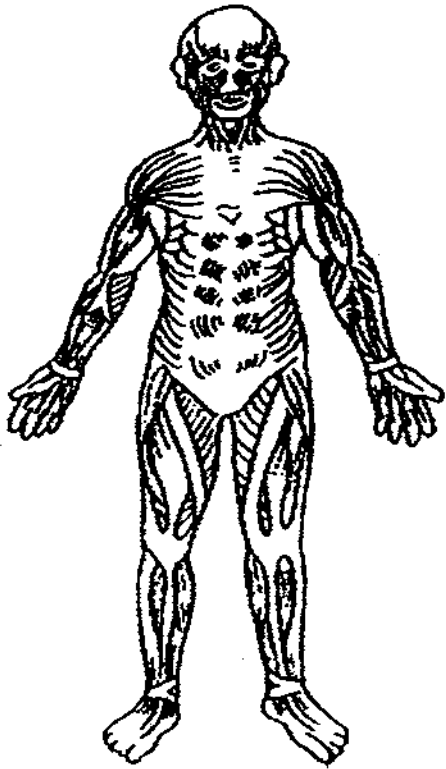
Two days later, the celery stalk was cut across at the point PQ. The cross section of the celery stalk is shown below.



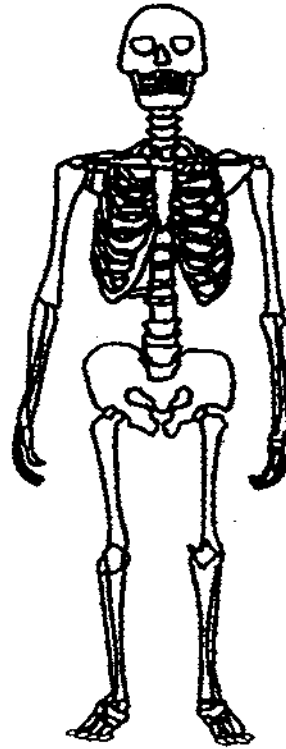
The areas indicated with an 'X' were coloured red. This shows that

- (1) red coloured water was carried through the stem
- (2) the leaves have absorbed the red colour from the water
- (3) food made in the leaves are carried to all parts of the plant
- (4) the red coloured water changed the colour of the food made

20 The following diagrams show two types of systems.



A



B

Which of the following describes the functions of Systems A and B?

	A	B
(1)	Supports the body	Enable the body to move
(2)	Gives the body its shape	Supports the body
(3)	Enables the body to move	Gives the body its shape
(4)	Gives the body its shape	Enables the body to move

ANGLO-CHINESE SCHOOL (JUNIOR)



SEMESTRAL ASSESSMENT 2 (2009)
PRIMARY 3
SCIENCE
BOOKLET B

Tuesday

3 November 2009

1 hour 30 minutes

Name : _____

Class : P 3 _____

INSTRUCTIONS TO PUPILS

DO NOT TURN OVER THE PAGES UNTIL YOU ARE TOLD TO DO SO

Follow all instructions carefully.
There are 16 questions in this booklet.
Answer **ALL** questions.

INFORMATION FOR PUPILS

The number of marks is given in brackets [] at the end of each question or part question.
The total marks for this booklet is 40.

The total time for Booklets A and B is 1 hour 30 minutes.

This question paper consists of 14 printed pages. (Inclusive of cover page)

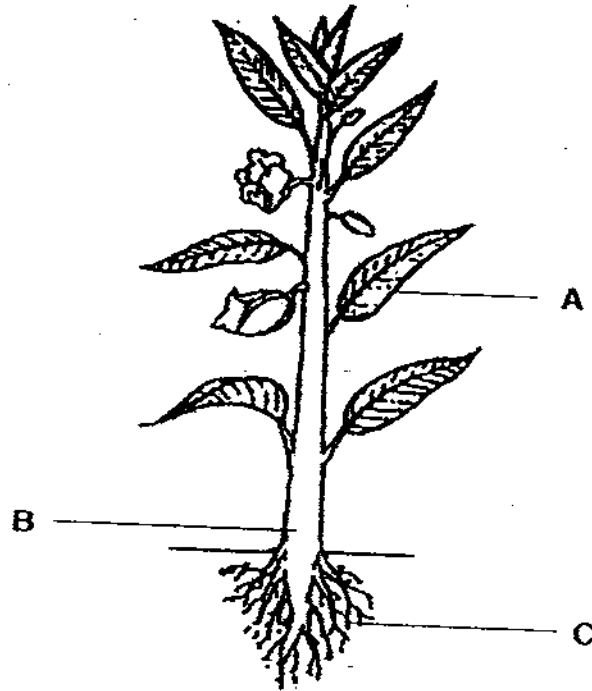
Question Numbers	Possible Marks	Marks Obtained
21	3	
22	2	
23	3	
24	2	
25	2	
26 - 27	5	
28	3	
29 - 30	4	
31	3	
32	2	
33 - 34	6	
35	3	
36	2	
Sub-total		

Booklet A	/40
Booklet B	/40
Total	/80
<p>_____ Parent's Signature / Date</p>	

Section B (40 marks)

For questions 21 to 36, write your answers in this booklet. The number of marks available is shown in brackets [] at the end of each question or part question.

21 Study the diagram of the plant.



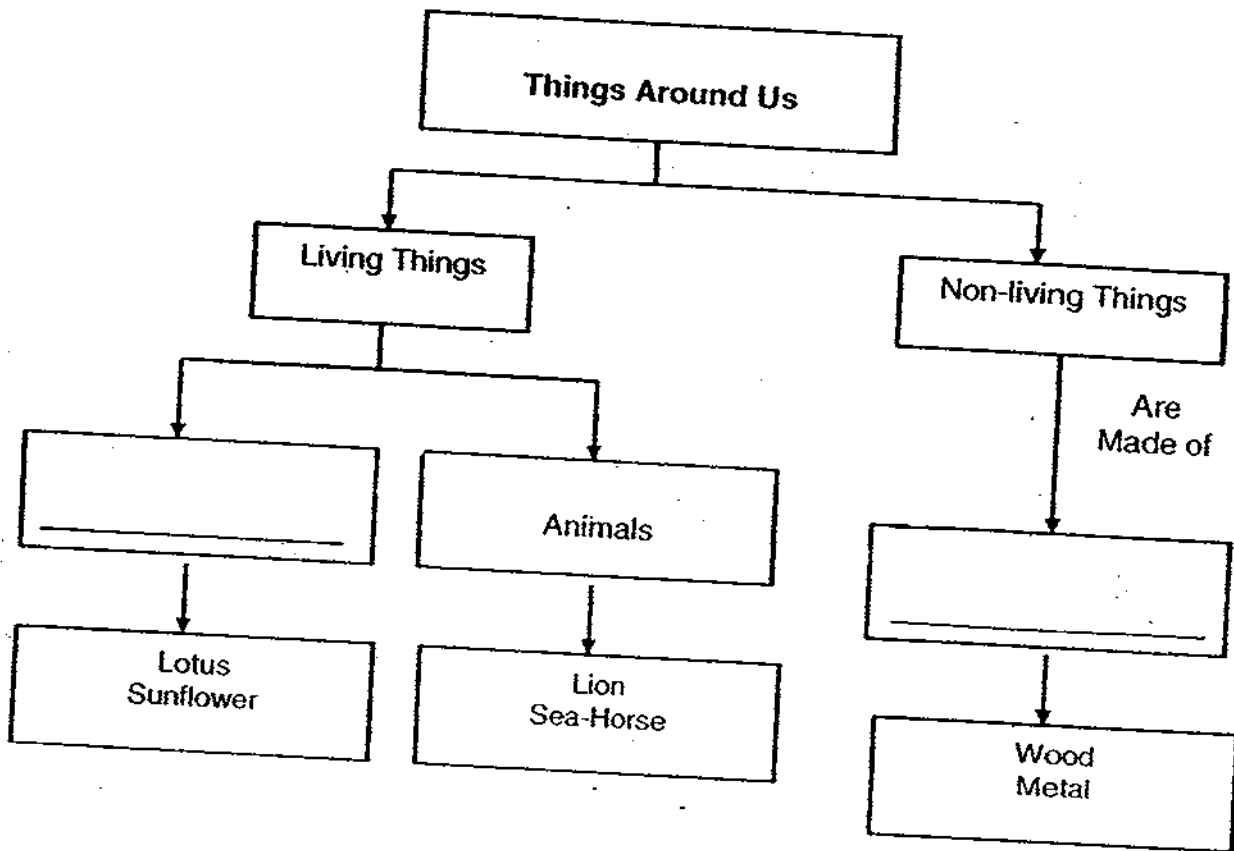
(a) Complete the table by filling in the function of each plant part A, B and C. [2]

Plant Part	Function
A	
B	
C	

(b) The leaf has a _____ edge. [1]

22 Study the chart and fill in the boxes with the most suitable headings.

[2]



23 (a) State 2 characteristics of living things.

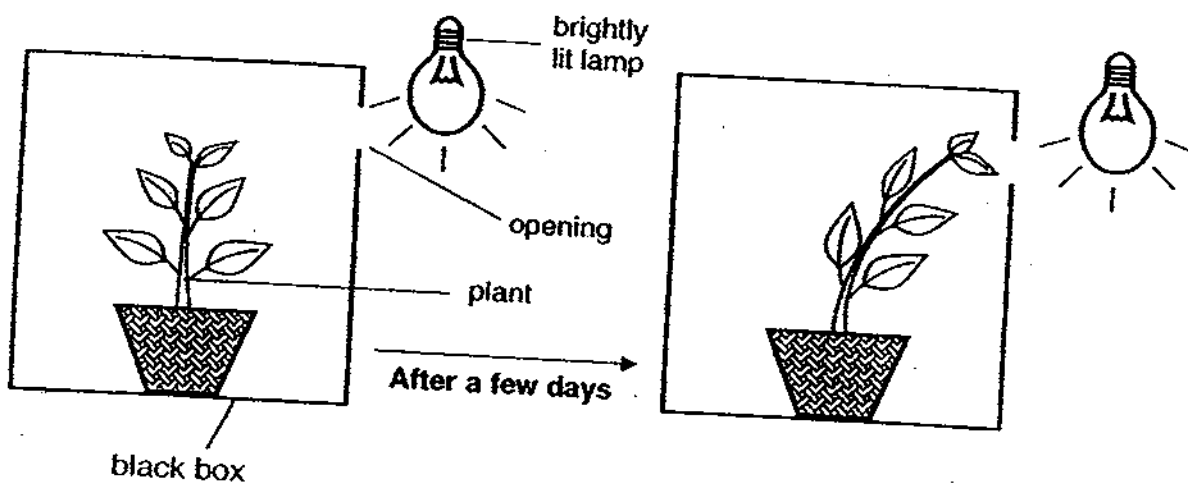
[1]

- (i) _____

- (ii) _____

--

(b) A plant is placed in a black box with an opening. It is placed next to a brightly lit lamp.

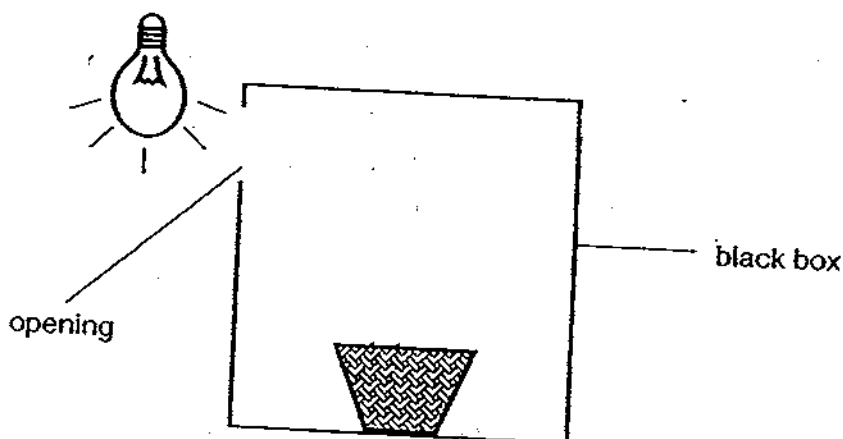


(i) What does this experiment show about plants?

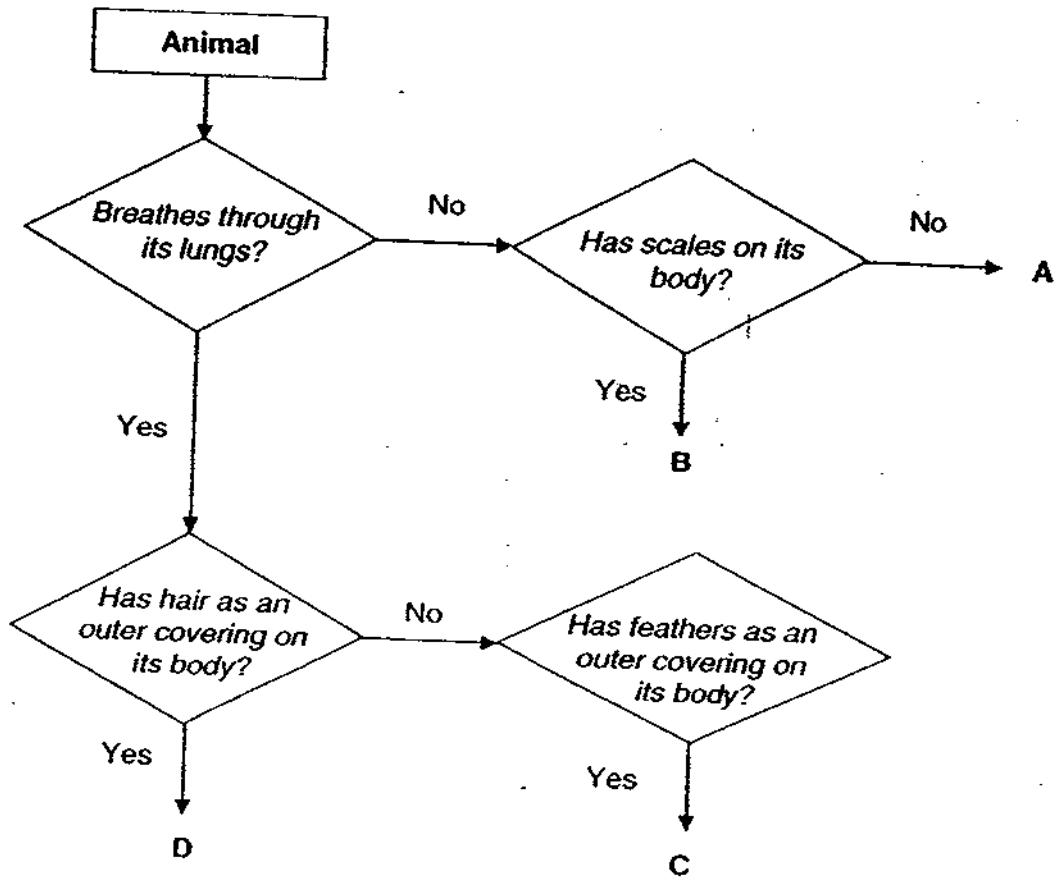
[1]

(ii) The brightly lit lamp is now moved as shown below. Draw the plant in the box provided.

[1]



24 Study the flowchart below.



(a) State two similar characteristics of Animal C and Animal D.

11

(b) State the group that each animal A, B, C and D belong to.

[1]

Letter	Grouping
A	
B	
C	
D	

25 Tommy wants to carry out an experiment to test if bread would become mouldy (faster) in a dark box or in the refrigerator.

(a) In the table below, place a tick (✓) for each condition that must remain the same, to make this a fair test. [1]

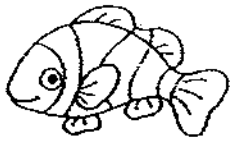



Condition	Keep the Same
Size of bread	
Type of bread	
Where to put the bread	
How long to keep the bread	

(b) If Tommy carries out the experiment, what will he find out at the end of his experiment?

[1]

--

Observe the animals in the pictures.

			
Clown Fish	Guppy	Snake	Seal

(a) (i) Which 2 animals would you group together? [1]
 Animals: _____

(ii) Give a suitable heading for your group. [1]
 Heading: _____

(b) State how the clown fish, guppy and seal are similar. (Exclude physical characteristics) [1]

27 Read each of the following statements carefully. Write 'T' for a true statement and the letter 'F' for a false statement in the brackets provided. [2]

- (a) Some birds and mammals can fly. ()
- (b) All insects have a pair of feelers and wings. ()
- (c) All mammals give birth to their young alive. ()
- (d) Some reptiles can live both on land and in water. ()

--

28

Joey came across a fallen tree at the corner of his school field. The tree was partly in the shade and partly in the sun. He also saw some toadstools growing at the sides of the tree. He decided to record his observations in the table below.

Conditions at the different parts of the tree	Number of Toadstools		
	Day 1	Day 2	Day 3
Bright and dry	0	1	3
Bright and moist	1	3	6
Shady and dry	2	4	7
Shady and moist	4	10	18

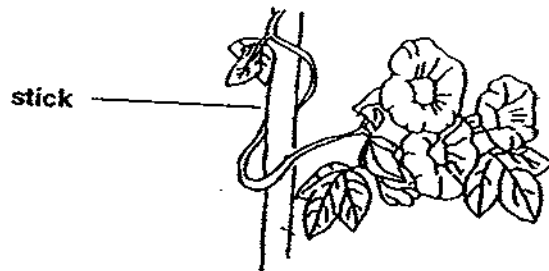
(a) Under which condition did the toadstools reproduce the fastest? [1]

(b) Based on the number of toadstools, in the table from Day 1 to Day 3, explain your answer in (a). [1]

(c) Some fungi like toadstools are inedible because they are poisonous. However, others can be useful to people. Give an example of a fungus that is useful. State its usefulness. [1]

--

29 Jason noticed that the morning glory plant is entwined around a stick.



(a) How does the stick help the plant?

[1]

(b) What does it tell you about the stem of the morning glory plant?

[1]

30 Andy was investigating the properties of a mirror, a metal spoon, a satay stick and a ping pong ball. A tick (✓) indicates that the object has that property.

Object	Property			
	Able to float	Waterproof	Breaks easily when dropped	Hard
A	✓	✓		
B	✓			
C		✓		✓
D		✓	✓	✓

(a) Which of the following objects (A, B, C or D) is the satay stick?

Object _____

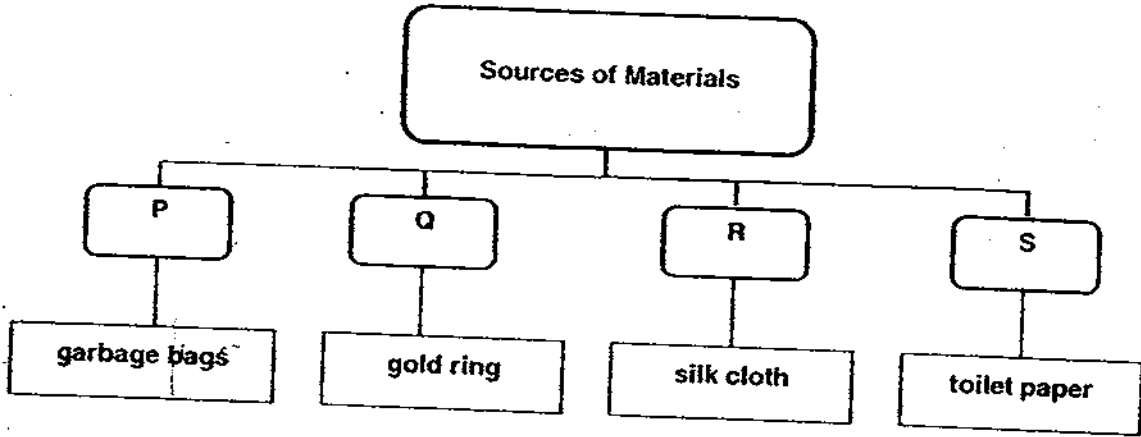
[1]

(b) Which of the 4 properties given above is the least important consideration for making a bookshelf?

[1]

--

31 The table below shows some objects placed into 4 groups, P, Q, R and S according to where they come from.



(a) In which group (P, Q, R or S) should you place these objects? Write the correct letter into the boxes below. [2]

Object	Group
cotton t-shirt	
woollen jackets	
iron nail	
mineral water bottle	

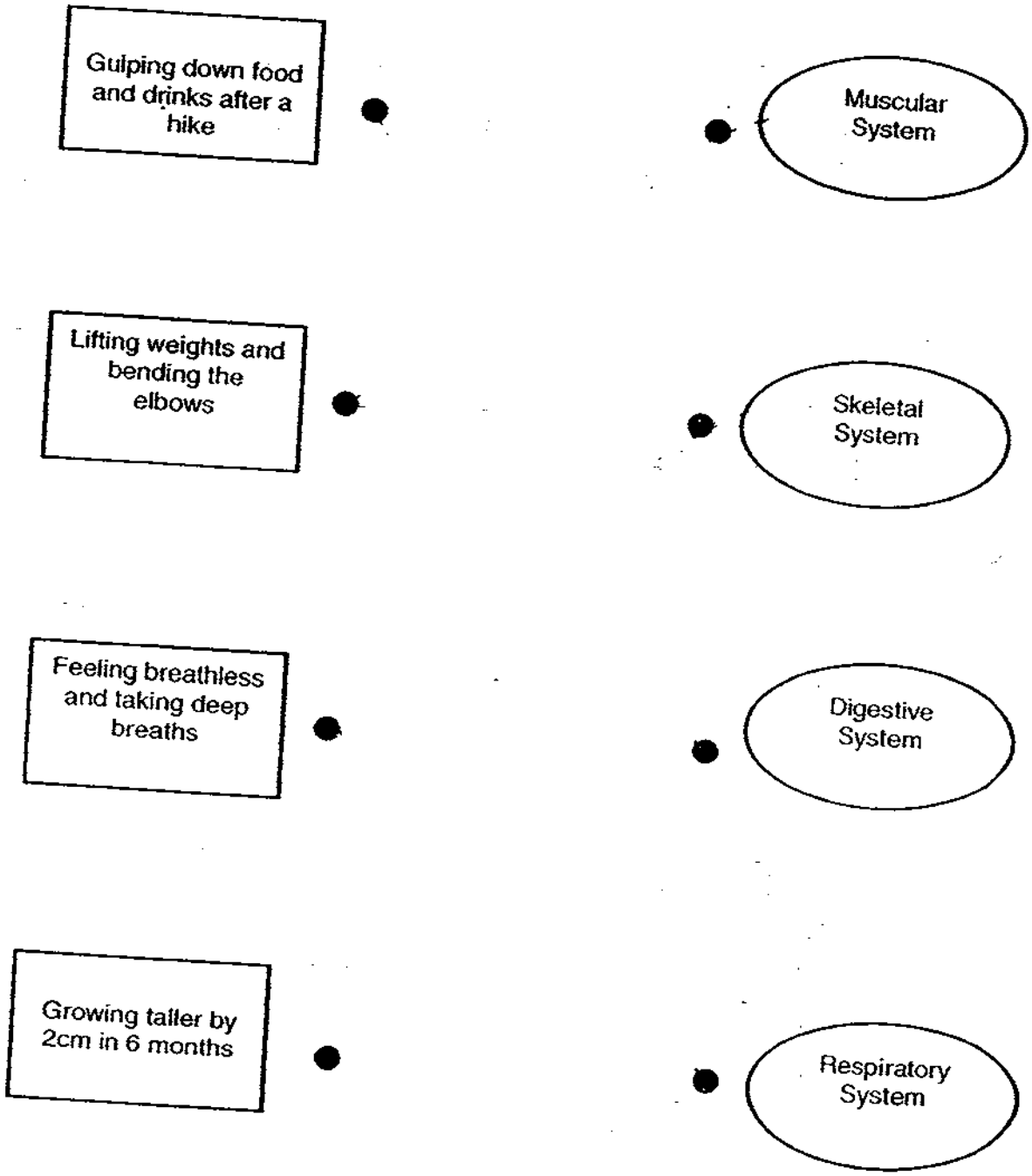
(b) Give a suitable heading for Group P. [1]

--

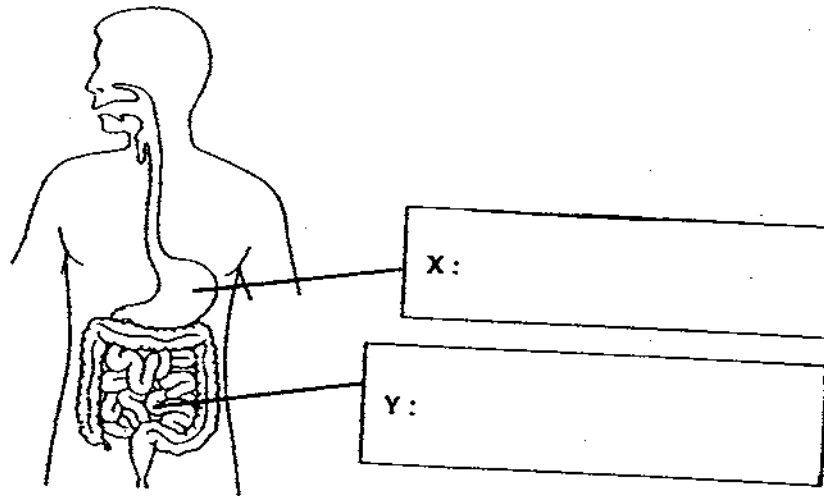
32

Our body consists of a number of systems that perform different functions. Identify the body systems in each of the scenario described below. Draw lines to match the scenarios to the different systems in the human body.

[2]



33 The diagram below shows the human digestive system.



- (a) In the diagram above, name the parts labelled X and Y. [1]
- (b) State what happens to the digested food and the undigested food in the small intestine. [2]

(i) Digested food: _____

(ii) Undigested food: _____

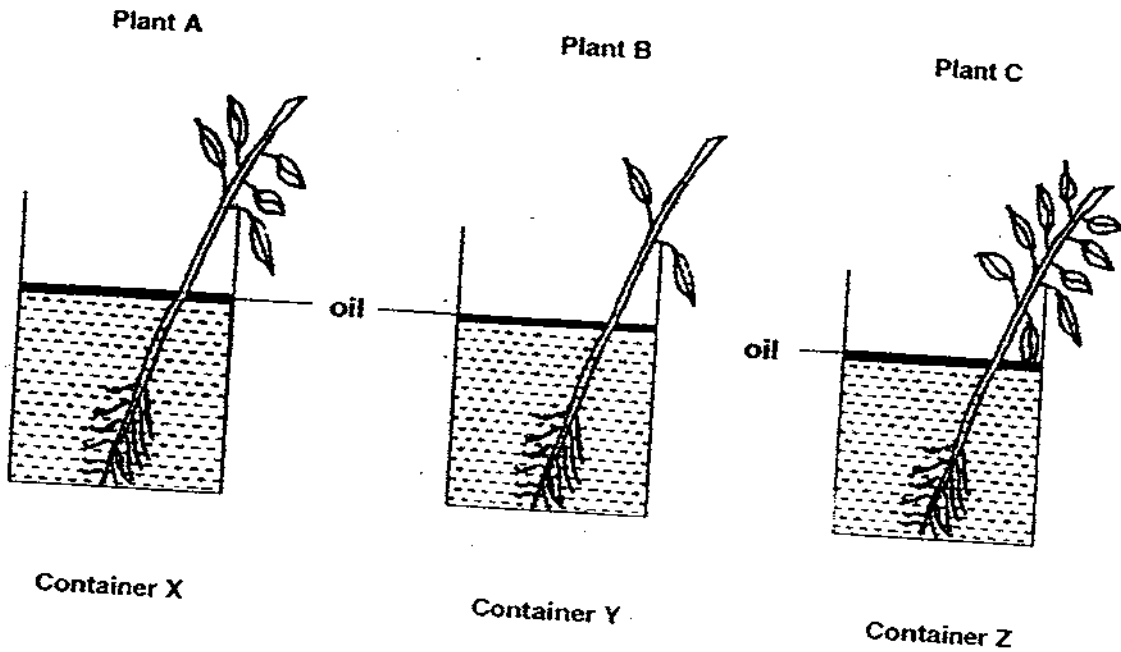
- (c) What is the function of the large intestine? [1]

34 Fill in the blanks with the correct words. [2]

Our body consists of several systems that work together. In the respiratory system, the lungs take in _____ into the body and remove _____ from the body. The circulatory system carries food, _____ and oxygen to all parts of the body and carries _____ materials away from different parts of the body.

--

- 35 Three similar plants were placed into 3 identical containers filled with 200ml of water. A layer of oil was poured into each container to prevent the water from evaporating into the air.



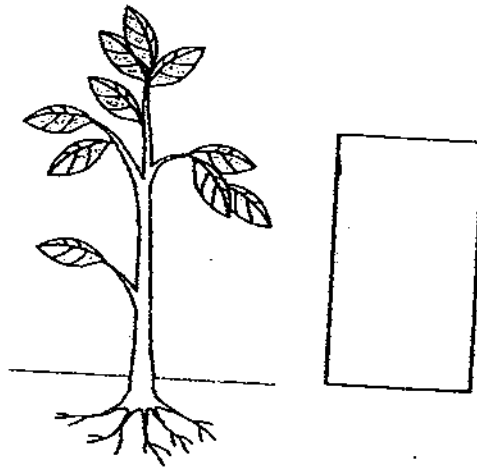
The volume of water in each container was recorded on the 6th day in the table below.

Plant	Container	Volume of Water (ml)	
		Day 1	Day 6
A	X	200	175
B	Y	200	190
C	Z	200	160

- (a) Which plant (A, B or C) took in the most amount of water? [1]

Plant _____

- (b) Based on your observation of the 3 similar plants, why did they take in different amounts of water? [1]



(c) In the diagram above, draw an arrow (→) in the box to show the direction of flow of water in the plant. [1]

36 Each box below states a part of the digestive system.

Mouth

1

Large Intestine

Stomach

Gullet

Small Intestine

Anus

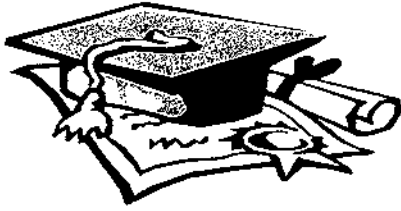
6

(a) In the boxes above, **write numbers 2 to 5** to show the journey of food through the different parts of the digestive system. [1]

(b) Name two parts of the digestive system which do not have digestive juices. [1]

(i) _____

(ii) _____

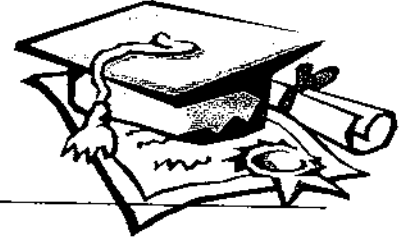


ANSWER SHEET

EXAM PAPER 2009

**SCHOOL : ACS HIGH PRIMARY
SUBJECT : PRIMARY 3 SCIENCE**

TERM : SA2



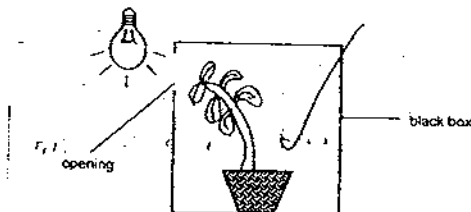
Q1	Q2	Q3	Q4	Q5	Q6	Q7	Q8	Q9	Q10	Q11	Q12	Q13	Q14	Q15	Q16	Q17
3	2	2	3	4	1	4	4	3	2	4	3	4	3	3	3	3

Q18	Q19	Q20
4	1	3

- 21)a)A: makes food for the plant.
B: Transports food, water and mineral salts to all parts of the plant.
C: Absorbs water and mineral salts for the plant.
b)smooth

22)Plants Natural materials

- 23)a)i)They respond to changes around them.
ii)They need air, food and water to survive.
b)i)Plants grow towards light to allow their leaves to make food.
ii)



- 24)a)The have an outer covering.
b)A: Insects B: Fish C: Birds D: Mammals

25)a)Type of bread. How long to keep the bread.
b)The bread which is kept in the dark box will grow mouldy faster.

26)a)i)Clown Fish and Guppy.
ii)Fish.
b)They live in water.


27)a)T b)F c)F d)T

28)a)Shady and moist.
b)Toadstools need air, water and warmth to grow and the shady and moist part provides them all, so the number of toadstool increase faster.
c)Yeast. It can be used to make bread.

29)a)The stick helps to give the plant support and so the plant can grow upwards.
b)The plant has a weak stem.

30)a)B.
b)It is the property able to float.

31)a)S, R, Q, P
b)Man made.

32) 

33)a)X: stomach Y: small intestine
b)i)goes through the walls of the small intestine and enters the blood vessels.
ii)goes to the large intestine.
c)It absorbs the water from the undigested food.

34)oxygen, carbon dioxide, water, waste

35)a)C.
b)They had different number of leaves hence they had a different amount of water lost, so they absorbed a different amount of water.

c) ↑

36)a)1, 3, 5
2, 4, 6

b)i)Gullet ii)Large intestine