



Anglo-Chinese School (Primary)

END-OF-YEAR EXAMINATION 2014
SCIENCE
PRIMARY THREE
BOOKLET A

Name: _____

Class: Primary 3 _____

Date: 30 October 2014

Duration of paper: 1 h 30 min

Parent's/Guardian's signature

INSTRUCTION TO CANDIDATES

1. This question paper consists of **13** printed pages including this cover page.
2. Do not turn this page until you are told to do so.
3. Follow all instructions carefully.
4. Answer all questions.
5. Shade your answer on the Optical Answer Sheet (OAS) provided.

For each of the following questions from 1 to 24, four options are given. One of them is the correct answer. Make your choice (1, 2, 3 or 4). Shade the correct oval (1, 2, 3 or 4) on the Optical Answer Sheet. [48 marks]

1 Study the classification table below carefully.

A	B	C	D
Wine	Butter	Tyres	Wires
Beans	Eggs	Newspapers	Needles
Raisins	Milk	Erasers	Buttons

Which one of the groups contains items that come from non-living things?

- (1) A
- (2) B
- (3) C
- (4) D

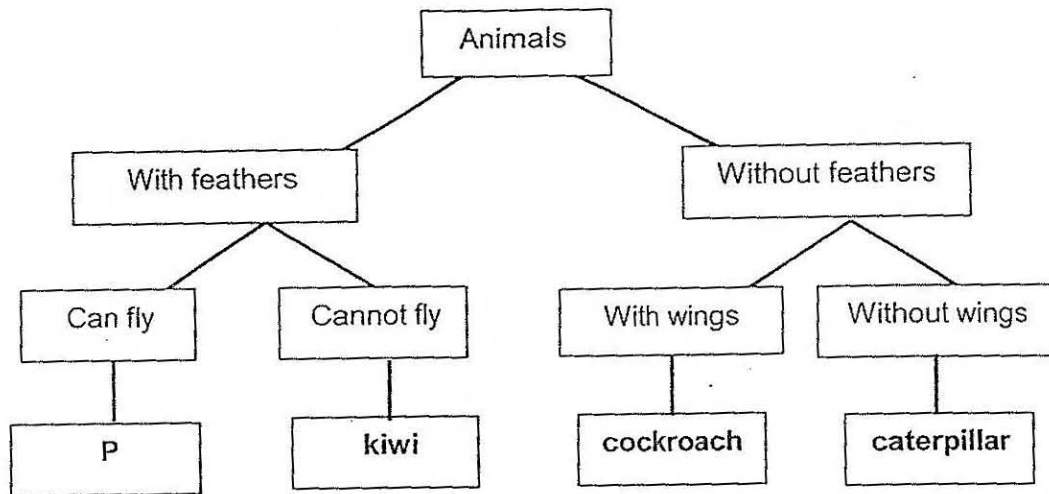
2 Which of the following characteristics do insects have?

- A They lay eggs.
- B They are warm-blooded.
- C They are covered with fur.
- D They have three body parts.

- (1) A and B only
- (2) A and D only
- (3) B and C only
- (4) C and D only

(Go on to the next page)

3 Study the classification chart below.



Which one of the following animals is likely to be P?

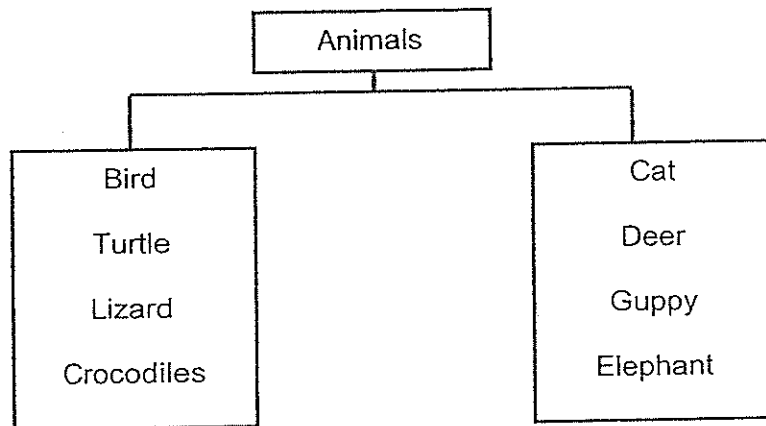
- (1) Moth
 - (2) Eagle
 - (3) Ostrich
 - (4) Butterfly
- 4 Peter planted four chilli plants, A, B, C and D, in four similar pots. He placed the plants under different conditions as represented in the table below.

Chilli Plant	Air	Sunlight	Water
A	No	Yes	No
B	Yes	No	No
C	No	Yes	Yes
D	Yes	Yes	Yes

Which plants will most likely die after two weeks?

- (1) A and B only
- (2) C and D only
- (3) A, B and C only
- (4) B, C and D only

5 Study the classification chart below.



Based on the classification chart above, how are the animals grouped?

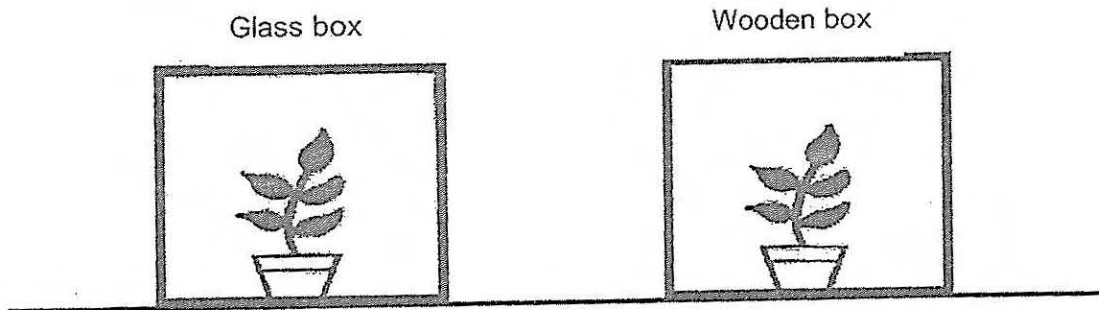
- (1) The way they move
- (2) The way they reproduce
- (3) The type of food they eat
- (4) The type of outer covering

6 Which of the following object(s) is/are made from living things?

- A Paper
- B Metal ruler
- C Cotton wool
- D Plastic straw

- (1) A only
- (2) C only
- (3) A and C only
- (4) B and D only

- 7 Two pots of similar plants were given the same amount of water and covered with boxes made from different materials but of the same size. They were then placed in an open field for one week.



After one week, three pupils observed that only the plant in the wooden box died.

The three pupils made the following statements on why the plant in the wooden box died.

Alice : The plant in the wooden box did not have enough air.

Brandon : The plant in the wooden box did not receive enough water.

Candice : The plant in the wooden box did not receive sunlight.

Whose statement(s) correctly explain(s) why the plant had died?

- (1) Alice only
 - (2) Brandon only
 - (3) Alice and Candice only
 - (4) Brandon and Candice only
- 8 A compass, like a freely-suspended magnet, always comes to rest in a _____ position.
- (1) East-West
 - (2) North-East
 - (3) South-West
 - (4) North-South

- 9 Zachary observed the characteristics of four animals and recorded his observations in the table shown below. A tick (✓) indicates that the animal has the described characteristic.

Characteristics Animal	Has legs	Lays eggs	Has hair
Monkey	✓		✓
Ostrich	✓	✓	
Mosquito		✓	✓
Elephant	✓		✓

Which one of the following animals' characteristics has Zachary recorded **incorrectly**?

- (1) Ostrich
 - (2) Monkey
 - (3) Elephant
 - (4) Mosquito
- 10 Tim took a bar magnet and divided it into four equal parts, A, B, C and D with a marker. He placed the bar magnet in a box of iron nails and then took it out. He recorded the number of iron nails the bar magnet attracted in the table below.

Part of the magnet	Number of iron nails attracted
A	1
B	6
C	7
D	3

Which parts of the magnet are most likely its poles?

- (1) A and B
- (2) B and C
- (3) C and D
- (4) A and D

(Go on to the next page)

11 Ming Ming wanted to separate two different types of materials using a magnet. Which one of the following sets of materials would he be able to separate using his magnet?

- (1) Sand and plasticine
- (2) Steel clips and iron nails
- (3) Copper wire and steel staples
- (4) Paper strips and aluminium

12 Which two objects make use of magnets?

- A Balloon
- B Compass
- C Refrigerator
- D Styrofoam cup

- (1) A and B
- (2) A and C
- (3) B and C
- (4) C and D

13. Study the classification table below carefully.

Group A	Group B	Group C
Wood	Frosted glass	Clear window glass
Metal	Tracing paper	Clear spectacle lenses

Which one of the following objects can be placed in Group C?

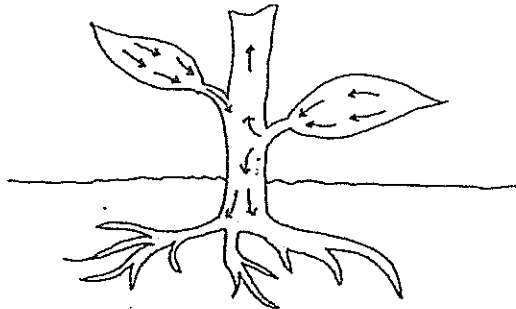
- (1) Metal plate
- (2) Handkerchief
- (3) Wooden door
- (4) Glass aquarium

- 14 John has four electromagnets, A, B, C and D. The table below shows the number of paper clips each electromagnet can attract with different number of coils of wire coiled around them.

Electromagnet	Number of coils of wire	Number of clips attracted
A	10	3
B	20	12
C	30	?
D	40	20

What is the likely number of clips attracted by electromagnet C?

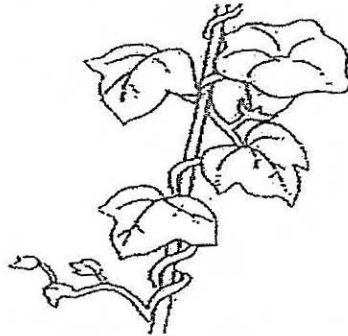
- (1) 8
 (2) 10
 (3) 15
 (4) 29
- 15 The diagram below shows part of a plant.



The arrows show the path taken by the _____ in the plant.

- (1) food
 (2) water
 (3) colours
 (4) mineral salts

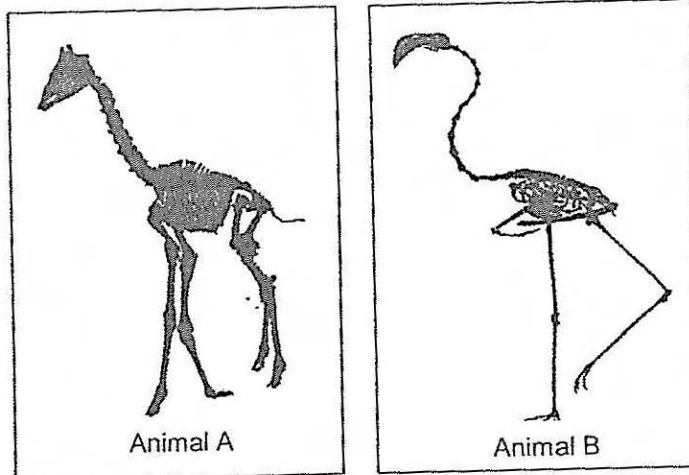
16 Study the picture below carefully.



Some plants with weak stems climb up a support in order to get _____.

- (1) air
- (2) food
- (3) water
- (4) sunlight

17 Study the diagrams below carefully. They show the skeleton of two different animals.

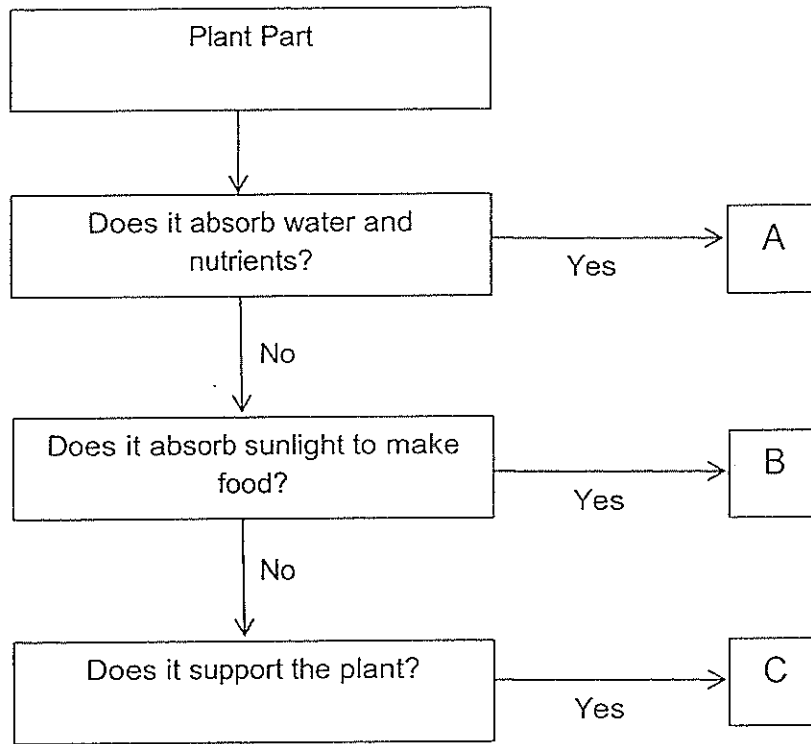


Which one of the following conclusions is not possible to make from looking at the diagrams alone?

- (1) Both animals have a backbone.
- (2) Both animals have a long neck.
- (3) Both animals feed on plants only.
- (4) Both animals are supported by their skeletal systems.

(Go on to the next page)

18 Study the flow chart below carefully.



Which plant parts are A, B and C likely to be?

	A	B	C
(1)	Stem	Leaf	Roots
(2)	Roots	Leaf	Stem
(3)	Leaf	Stem	Roots
(4)	Stem	Roots	Leaf

19 Which one of the following is not a system?

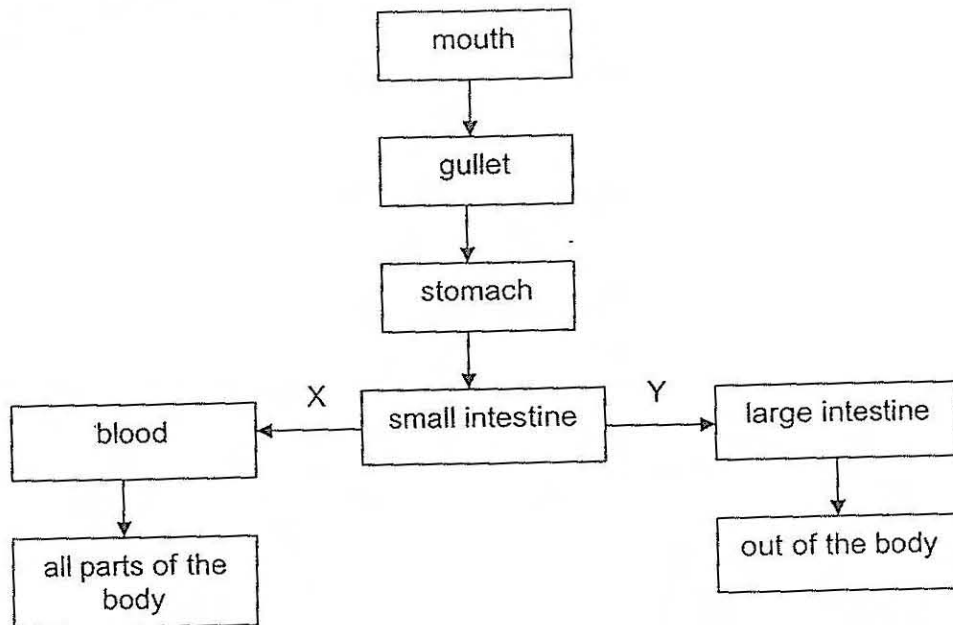
- (1) Piano
- (2) Marble
- (3) Camera
- (4) School shoes

20 Thomas took part in a 100 m race. Which of the following body systems did he use when he was running?

- A Circulatory system
- B Muscular system
- C Respiratory system
- D Skeletal system

- (1) A and B only
- (2) A and C only
- (3) B, C and D only
- (4) A, B, C and D

21 The diagram below shows the movement of food through some parts of the body in the digestive system.



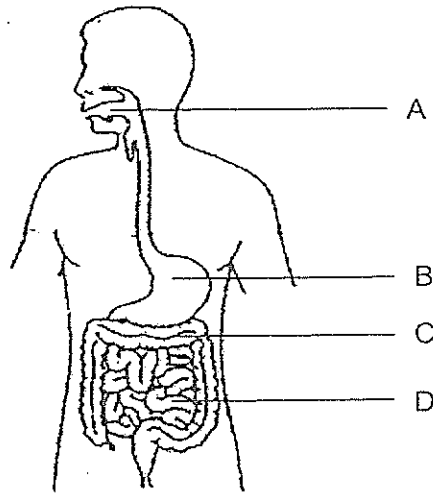
What do X and Y represent?

	X	Y
(1)	Water	Digested food
(2)	Digested food	Undigested food
(3)	Undigested food	Water
(4)	Water	Undigested food

- 22 The table below shows one organ that can be found in the different body systems. Which one of the following incorrectly matches the organ to the system that it is found in?

	System	Organ
(1)	Respiratory	Lungs
(2)	Skeletal	Small intestine
(3)	Circulatory	Heart
(4)	Digestive	Stomach

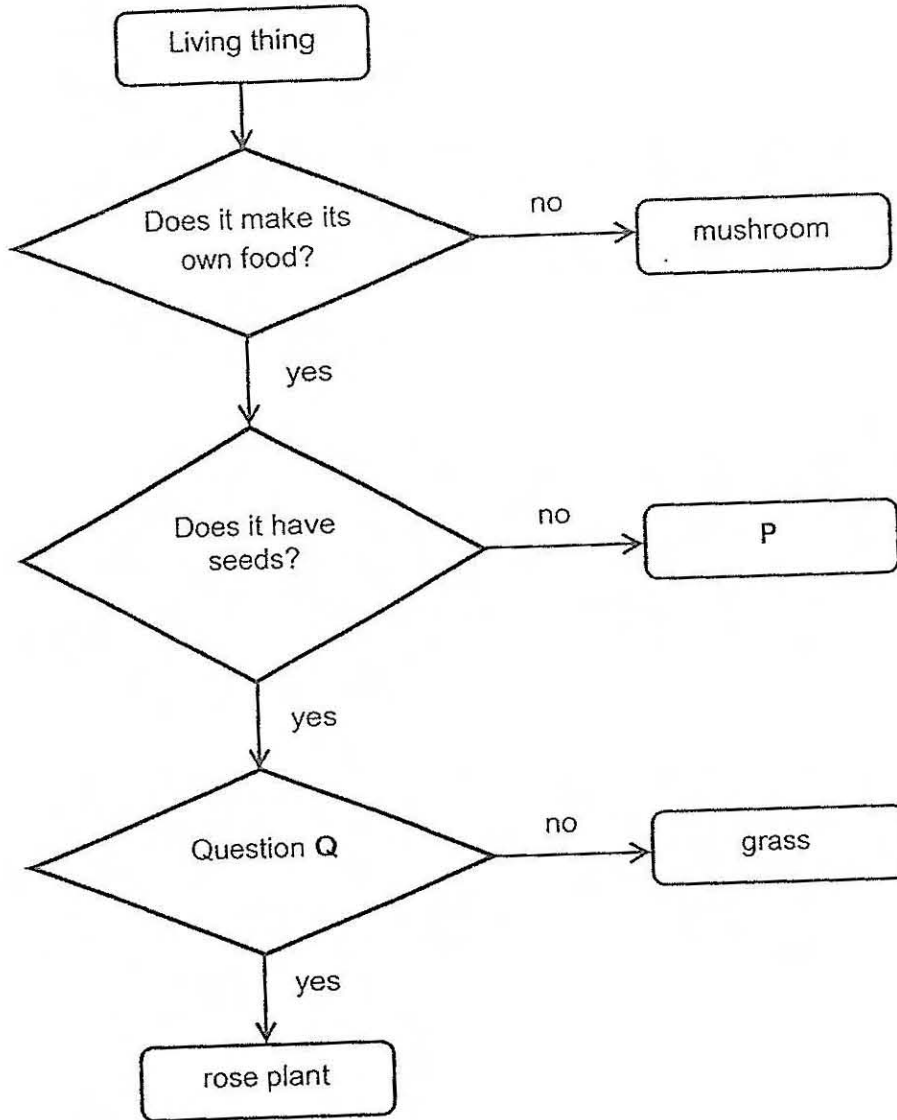
- 23 The diagram below shows the human digestive system.



In which of the parts, A, B, C and D does digestion take place?

- (1) A and B only
 (2) C and D only
 (3) A, B and D only
 (4) B, C and D only

24 Study the flow chart below.

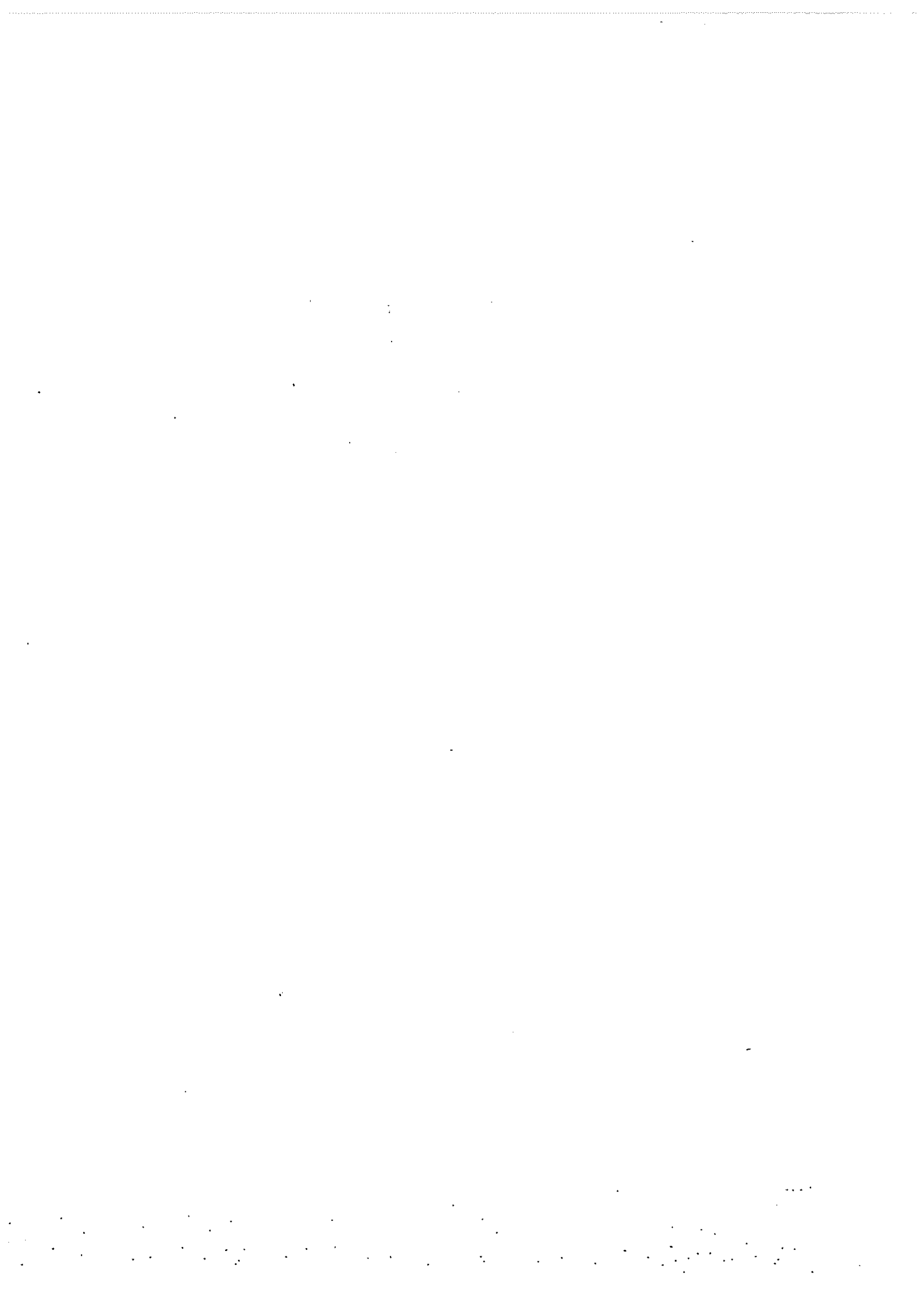


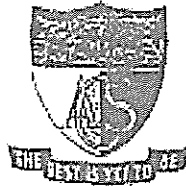
Which one of the following is correct?

	P	Question Q
(1)	P is a type of fungi.	Does it have bright-coloured flowers?
(2)	P is a type of bacteria.	Does it have strong stem?
(3)	P is a type of flowering plant.	Does it have strong stem?
(4)	P is a type of non-flowering plant.	Does it have bright-coloured flowers?

END OF BOOKLET A

Please go onto Booklet B





Anglo-Chinese School (Primary)

END-OF-YEAR EXAMINATION 2014
SCIENCE
PRIMARY THREE
BOOKLET B

Name: _____ ()

Class: Primary 3 _____

Date: 30 October 2014

Duration of paper: 1 h 30 min

Parent's/Guardian's signature

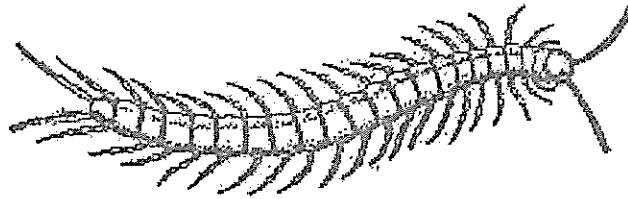
INSTRUCTION TO CANDIDATES

1. This question paper consists of 9 printed pages.
2. Do not turn this page until you are told to do so.
3. Follow all instructions carefully.
4. Answer all questions.
5. Write all your answers in this booklet.

Booklet	Maximum marks	Marks obtained
A	48	
B	32	
Total	80	

For questions 25 to 35, write your answers in the spaces provided in this booklet. The number of marks available is shown in brackets [] at the end of each question or part question. [20 marks]

25 Observe the picture of the animal below.



Based on your observation of the picture only, state two characteristics of the animal to show that it is not an insect. [2]

(i) _____

(ii) _____

26 Jayvon set up an experiment to find out whether plants need water to survive.

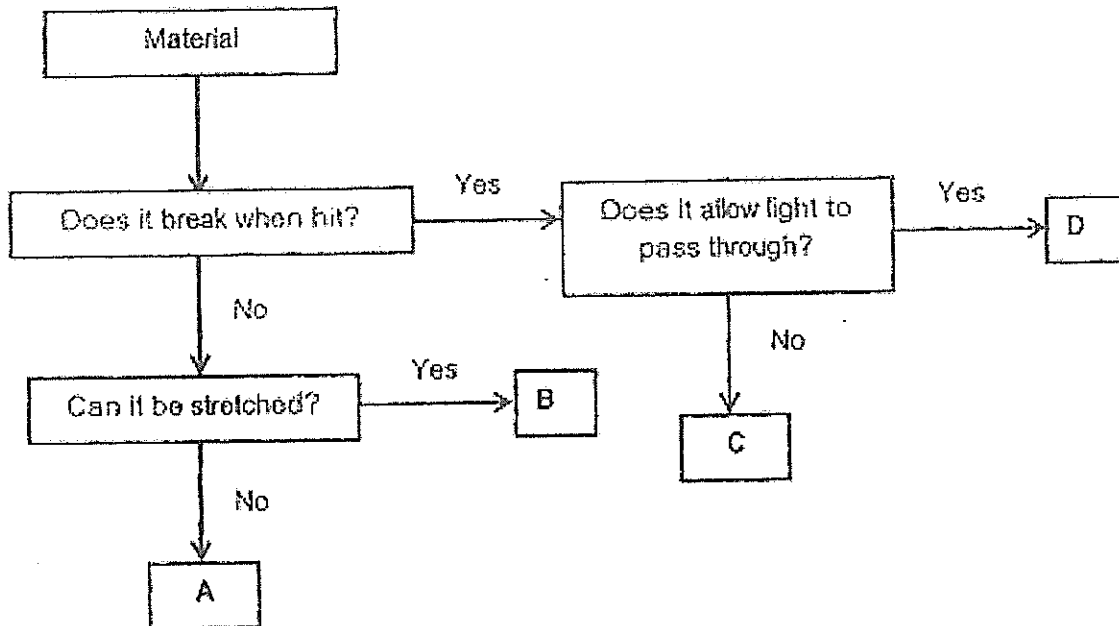
Which of the following variables below should he keep the same or changed? [2]

Variables	Keep the same	Change
Type of plant		
Type of soil		
Amount of water		
Amount of sunlight		

(Go on to the next page)

Score	4
-------	---

- 27 The flow chart below provides information on four different materials A, B, C and D. Use the information in the flow chart to answer the questions.



- (a) Based on the flow chart above, describe Material A. [1]

- (b) State one difference between Material B and Material C.

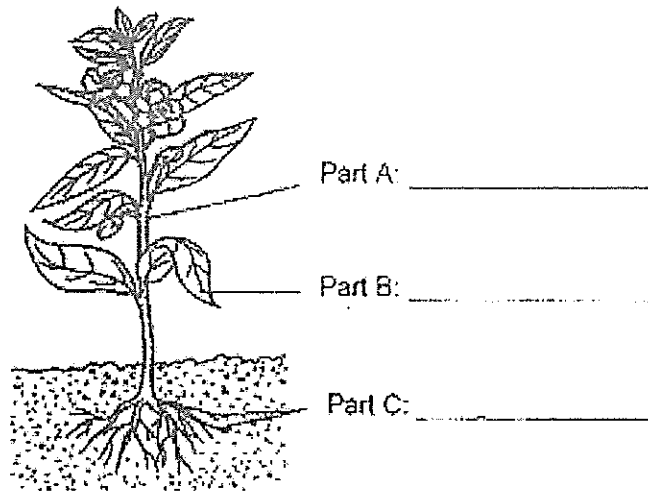
- (c) Give an example of Material D.

(Go on to the next page)

Score	
-------	--

- 28 (a) Label the plant parts below using the given words. [3]

roots	leaf	stem	flower
-------	------	------	--------



- (b) What is the function of Part C?

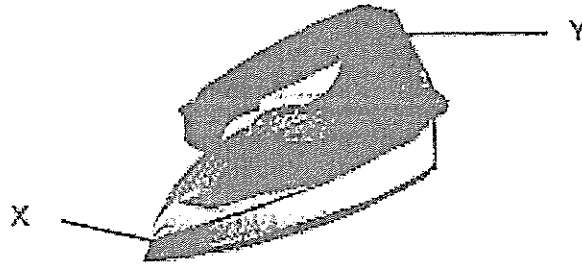
- 29 Read the statements below carefully and put a tick (✓) in the correct boxes. [3]

	Statement	True	False
(a)	The ribcage in our body protects the lungs and heart.		
(b)	The blood brings digested food to all parts of the body.		
(c)	The saliva in our mouth softens the food so we can swallow it.		
(d)	The large intestines absorb water and undigested food.		
(e)	The respiratory system consists of the nose, gullet and lungs only.		
(f)	When food gets into our windpipe by mistake, we choke and try to cough it out.		

(Go on to the next page)

Score	7
-------	---

30 The picture below shows an electric iron.



- (a) What are the materials used to make Part X and Y? [2]

Part X: _____

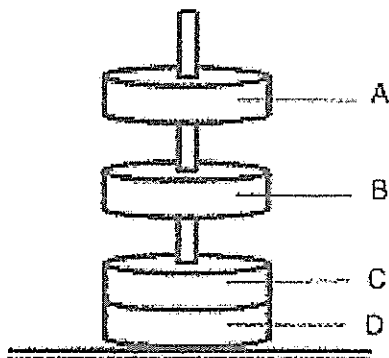
Part Y: _____

- (b) Explain why the material you have chosen for Part Y is suitable for making the handle of the electric iron. [1]

(Go on to the next page)

Score	
	3

- 31 The diagram below shows four ring shaped objects, A, B, C and D, placed through a rod.



Study the statements below carefully. For each statement, determine whether it is true, false or not possible to tell. Put a tick (✓) in the correct box. [2]

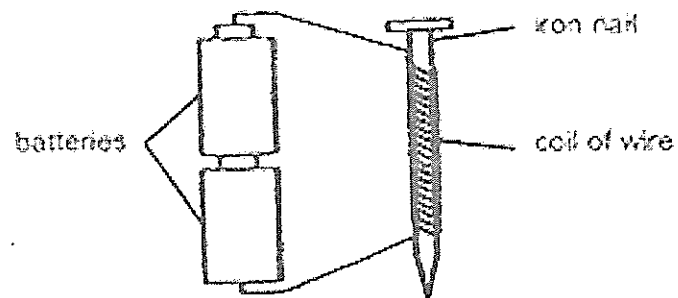
	Statement	True	False	Not possible to tell
(a)	All four objects are definitely magnets.			
(b)	The like poles of A and B are facing each other.			
(c)	Object B is attracting object C.			
(d)	Object C is attracting Object D.			

- (e) What happens when the unlike poles of two magnets face each other? [1]

(Go on to the next page)

Score	3
-------	---

- 32 Jenny used an iron nail, two batteries and a coil of wire to set up an experiment as shown in the diagram below.

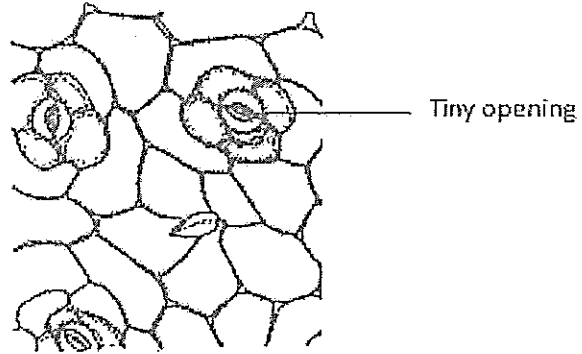


- (a) What is Jenny trying to turn the iron nail into? [1]
-
- (b) What can Jenny do to test whether her set-up is successful? [1]
-
-
- (c) What will happen if Jenny coils double the amount of wire around the iron nail? [1]
-
-
- (d) Besides iron, what other materials can the nail be made from? [1]
-

(Go on to the next page)

Score	4
-------	---

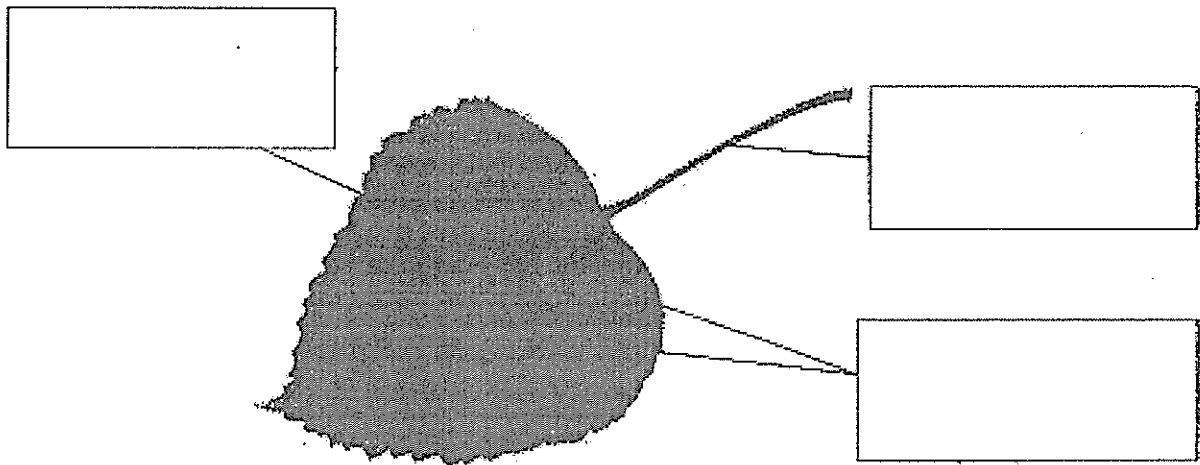
33 Peter learnt that plants have tiny openings like the ones shown in the diagram below.



(a) Which part of the plant are these tiny openings mainly found in? [1]

(b) Name one function of these tiny openings. [1]

34 Label the parts of the leaf in the boxes below. [3]



(Go on to the next page)

Score	
	5

35 Different systems in our body work together to ensure that we are able to function properly.

- (a) Which two body systems work together to ensure that we are able to move, bend and stretch our body? [1]

- (b) Which two body systems work together to ensure that all parts of our body receive digested food to give us energy for our daily activities? [1]

- (c) What will happen to the food we eat if the muscles in the gullet are not working properly? [1]

END OF BOOKLET B

Please check all your answers carefully.

Score	
	3



YEAR: 2014
LEVEL: P3
SCHOOL: ACS
SUBJECT: SCIENCE
SEMESTER: SA2

Q1	Q2	Q3	Q4	Q5	Q6	Q7	Q8	Q9	Q10
4	2	2	3	2	3	3	4	4	2

Q11	Q12	Q13	Q14	Q15	Q16	Q17	Q18	Q19	Q20
3	3	4	3	1	4	3	2	2	4

Q21	Q22	Q23	Q24
2	2	3	4

25. i) It has more than six legs.
ii) It has more than 3 body parts.
26. Type of plant: Keep the same
Type of soil: Keep the same
Amount of water: Change
Amount of sunlight: Keep the same
27. a) Material A cannot be stretched.
b) Material B does not break when hit while Material C breaks when hit.
c) Ceramic
28. Part A: Stem
Part B: Leaf
Part C: Roots
b) Part C absorbs nutrients and water and holds the plant to the ground.
29. a) True
b) True
c) True
d) False
e) False
f) True

30. a) Part X: Metal
Part Y: Plastic
b) It is a poor conductor of heat.

31. a) Not possible to tell
b) True
c) False
d) Not possible to tell
e) They will attract.

32. a) Magnet
b) Put a few steel paper clips beside it and try to attract them.
c) It makes the magnet stronger.
d) Steel, and nickel

33. a) leaves
b) For the exchange of gases.

34.

Blade

Stalk

Vein

35. a) Muscular and skeletal system
b) Circulatory and digestive system
c) Food will not get to the stomach