

Pei Chun Public School
Semestral Assessment 2 – 2014
Science
Primary 3

Name : _____ () Date : 28 October 2014

Class : Pri. 3 ()

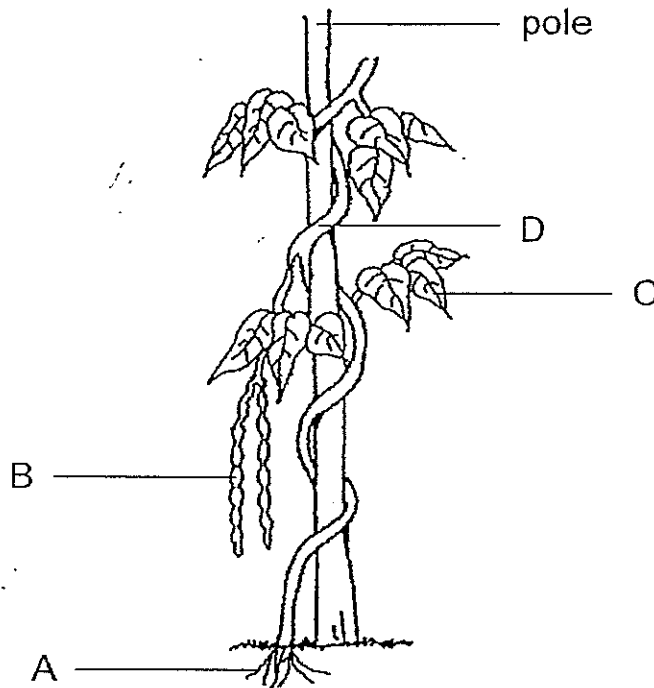
Science Teacher : _____

Time : 1 h 20 min

Section A (24 × 2 marks)

For questions 1 to 24, choose the most suitable answer and shade its number (1, 2, 3 or 4) on the Optical Answer Sheet (OAS) provided.

1. The diagram below shows a bean plant.

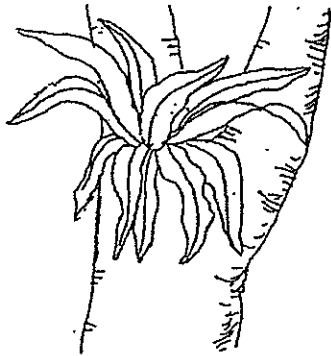


Which part of the plant helps it to climb up the pole to get sunlight?

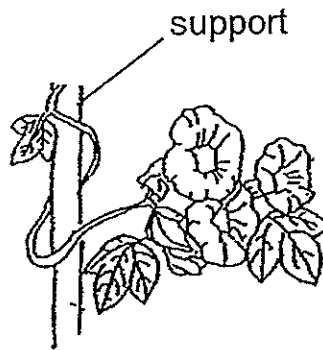
- (1) A
- (2) B
- (3) C
- (4) D

2. Study the table below and diagrams of the plants that follow.

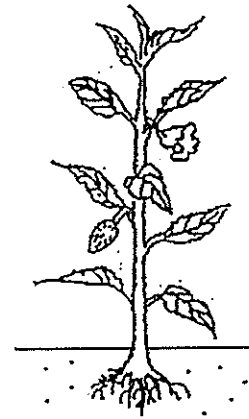
Plant	X	Y	Z
Produces flowers	✓	✓	
Has a strong stem		✓	



bird's nest fern



morning glory



balsam

Which of the following correctly matches the plants to letters X, Y and Z?

	X	Y	Z
(1)	balsam	bird's nest fern	morning glory
(2)	morning glory	bird's nest fern	balsam
(3)	balsam	morning glory	bird's nest fern
(4)	morning glory	balsam	bird's nest fern

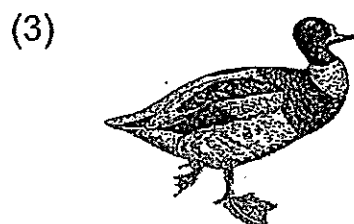
3. Which of the animals below gives birth to its young?



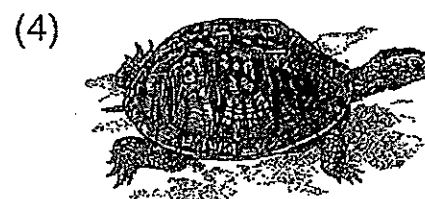
tiger



goldfish

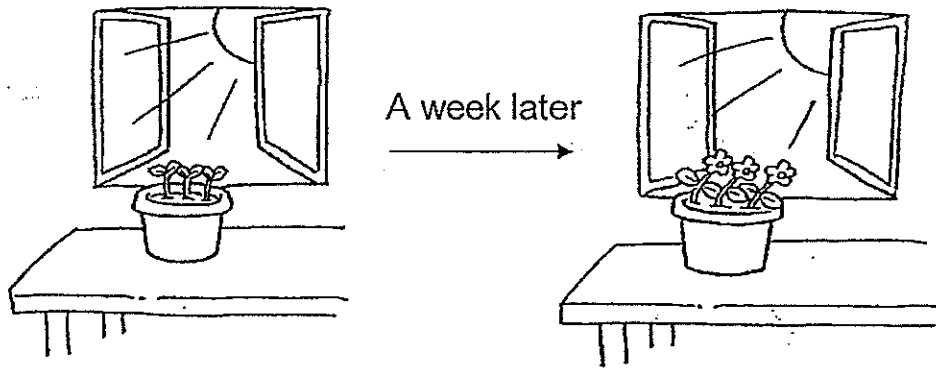


duck



turtle

4. Felicia placed a pot of plants next to the open window. She watered the plants daily. The diagram below shows what she observed after one week.



Based on her observation, she concluded that the plants are living things because they _____.

- A : grow
- B : reproduce
- C : respond to changes around them

- (1) A only
- (2) B only
- (3) A and C only
- (4) B and C only

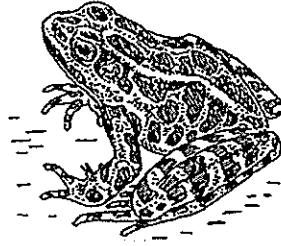
5. The table below shows how some animals can be grouped.

	Has lungs	Has gills
Does not have scales on its body	E	G
Has scales on its body	F	H

Which group of animals do reptiles belong to?

- (1) E
- (2) F
- (3) G
- (4) H

6. The diagram below shows an animal.

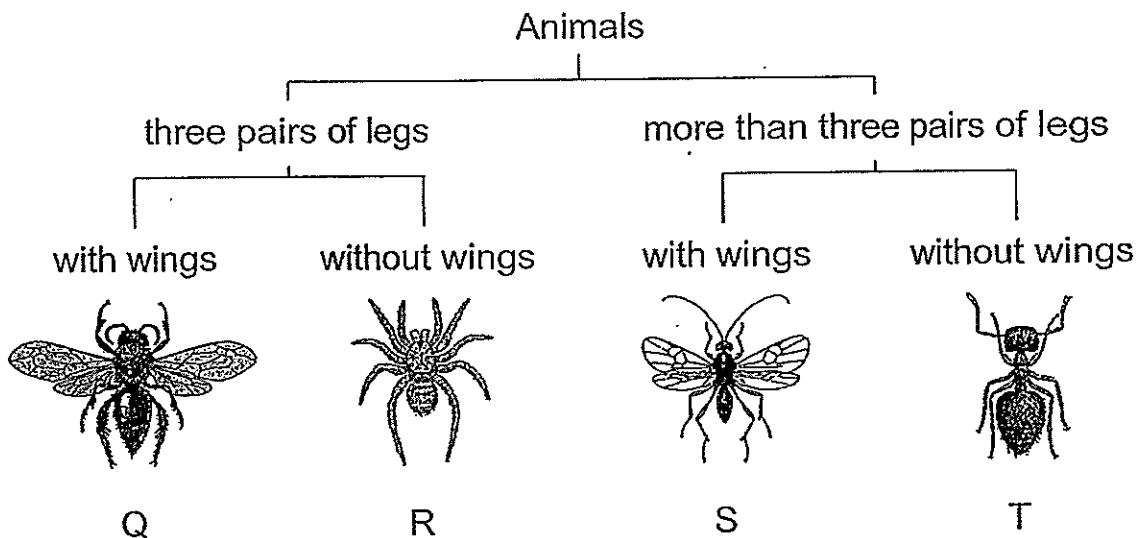


Which of the following statements about the animal are true?

- A : It breathes through its moist skin when it is underwater.
- B : It reproduces by laying eggs.
- C : It lives only in the water.
- D : It has scales.

- (1) A and B only
- (2) B and C only
- (3) A and C only
- (4) C and D only

7. Four different animals have been classified as shown below.



Which of the animals above have been classified wrongly?

- (1) R only
- (2) Q only
- (3) R and T only
- (4) R, S and T only

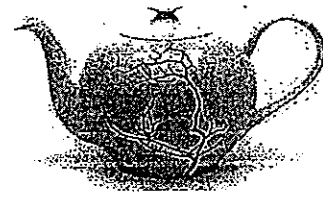
8. Study the objects below.



clear glass bowl



claypot

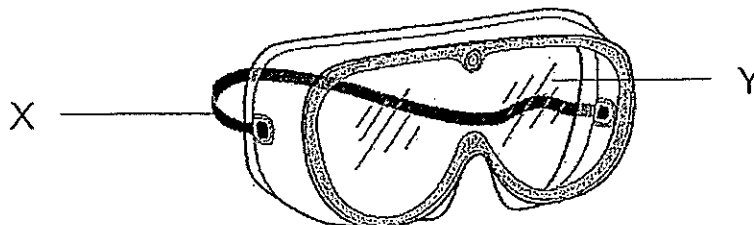


ceramic teapot

In what way are the objects similar?

- (1) They allow light to pass through them.
- (2) They break easily when dropped.
- (3) They are not waterproof.
- (4) They are flexible.

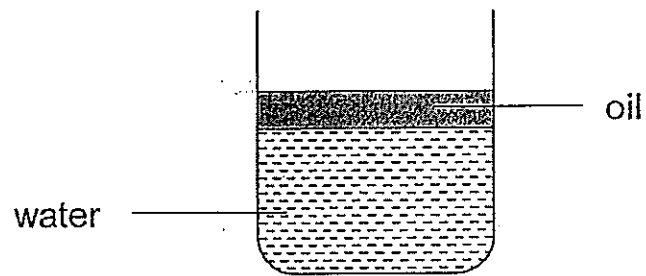
9. The diagram below shows a pair of goggles.



Which materials are used to make parts X and Y?

	X	Y
(1)	plastic	metal
(2)	rubber	metal
(3)	metal	plastic
(4)	rubber	plastic

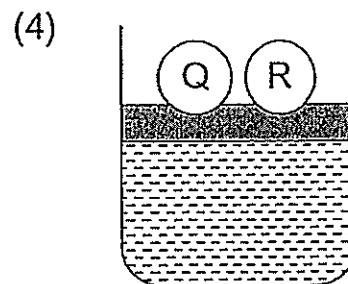
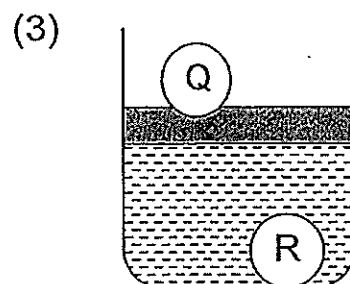
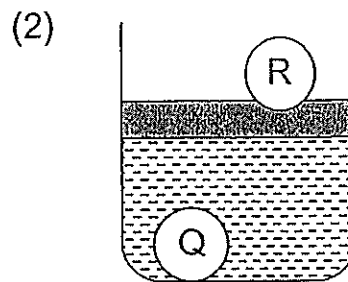
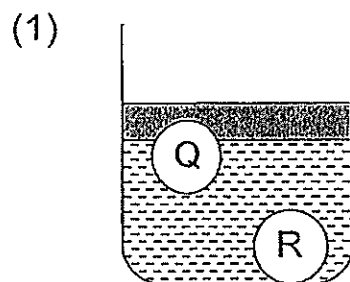
10. Ryan carried out an experiment using the set-up below. Oil always floats on water.



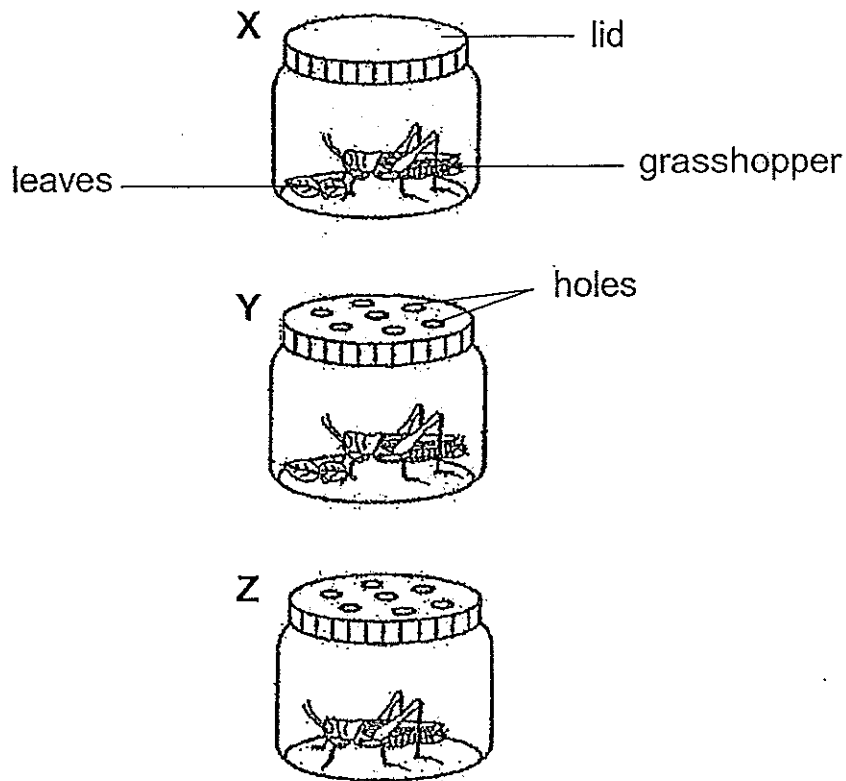
He had two similar balls, Q and R. A table of information about the balls is given below.

	Floats on oil	Sinks in water
Ball Q		✓
Ball R	✓	

Which of the following diagrams correctly shows the position of the two balls when Ryan dropped them into the set-up shown above?



11. Ivan wanted to keep a grasshopper as a pet. He thought of three possible ways, X, Y and Z, to keep his grasshopper.



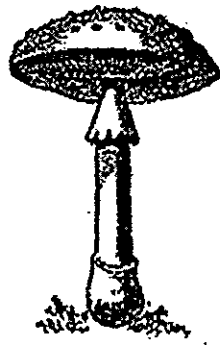
Which of the following is correct?

	Keeps the grasshopper alive for the longest period of time	Keeps the grasshopper alive for the shortest period of time
(1)	Y	X
(2)	X	Y
(3)	Y	Z
(4)	X	Z

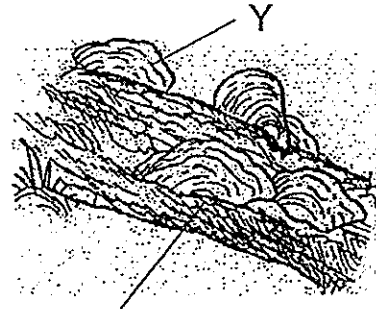
12. Which of the following statements about bacteria is true?

- (1) All bacteria are harmful.
- (2) Bacteria can reproduce.
- (3) Bacteria can make its own food.
- (4) Bacteria can only be seen using a magnifying glass.

13. The diagrams below show two living things, X and Y.



X



dead tree trunk

Which of the statements below correctly describe(s) both living things X and Y?

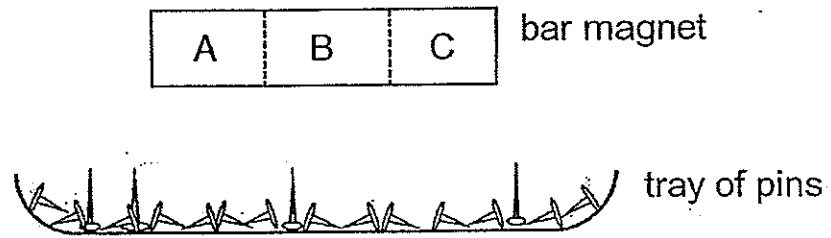
- A : They reproduce by spores.
- B : They can make their own food.
- C : They feed on other living things, dead or alive.

- (1) A only
- (2) A and B only
- (3) A and C only
- (4) B and C only

14. Juliet wanted to separate two objects which have been mixed together. Which pair of objects can be separated using a magnet?

- (1) rubber bands and copper wire
- (2) rubber bands and sawdust
- (3) iron filings and steel pins
- (4) sawdust and iron filings

15. Bernita placed a bar magnet onto a tray of iron pins as shown in the diagram below.

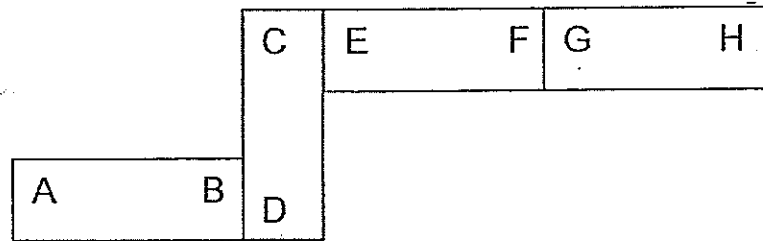


Which of the following shows the likely number of pins attracted to parts A, B and C of the bar magnet?

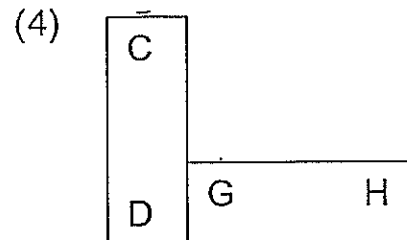
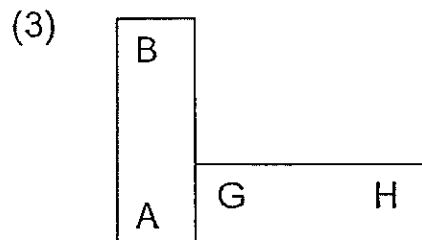
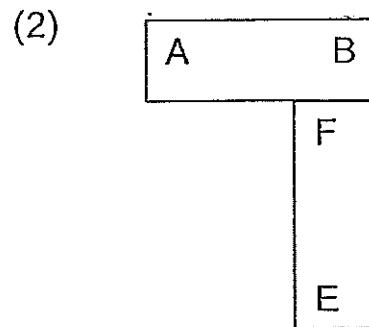
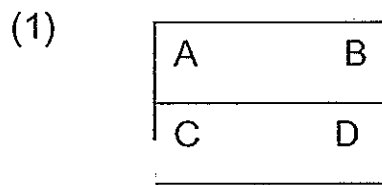
	A	B	C
(1)	5	5	5
(2)	7	1	7
(3)	9	4	1
(4)	3	9	3

16. Which of the following actions will **not** cause a magnet to lose its magnetism?
- (1) Hitting it repeatedly with a hammer
 - (2) Dropping it from a height repeatedly
 - (3) Heating it over a flame for some time
 - (4) Stroking it with a non-magnetic object
17. Rickie stroked some items with a magnet in one direction for several times. Which of the following items would most likely be magnetised?
- (1) steel bar
 - (2) plastic ruler
 - (3) copper coin
 - (4) aluminium pipe

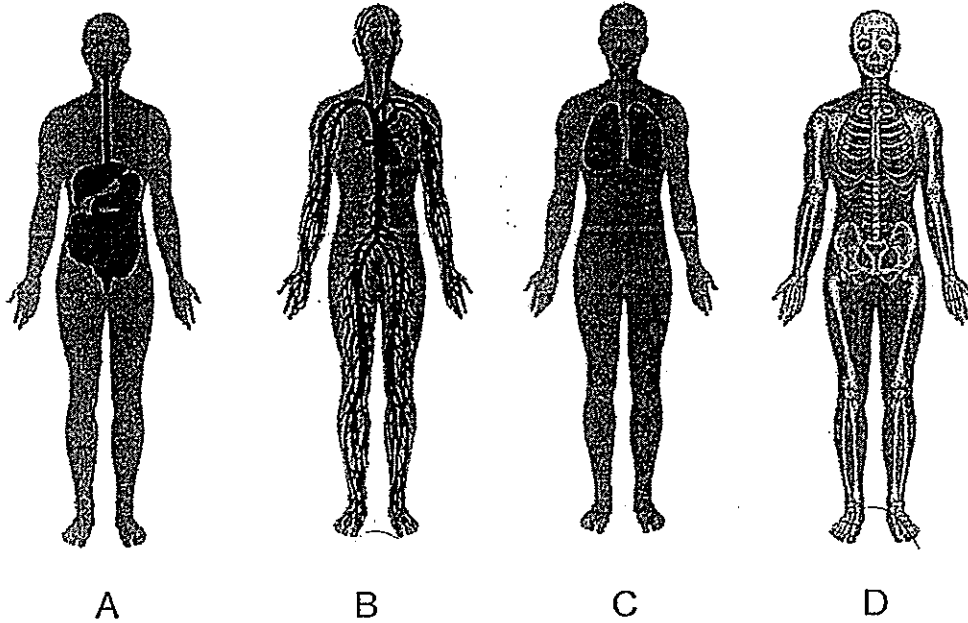
18. Four identical bar magnets can be arranged as shown in the diagram below.



Which of the following arrangements of the magnets is possible?



19. The diagram below shows different human body systems.



Which of the systems gives the body its shape?

- (1) A
- (2) B
- (3) C
- (4) D

20. Ali made the following statements about the human circulatory system.

P : Protects the organs in the body

Q : Carries useful substances to all parts of the body

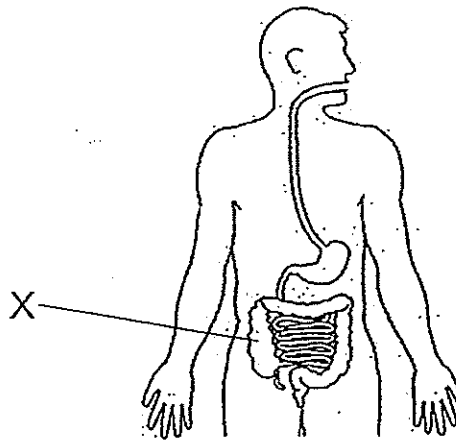
R : Removes excess water from the body

S : Carries waste materials away from different parts of the body

Which of the statements made by Ali is/are true?

- (1) Q only
- (2) Q and S only
- (3) Q, R and S only
- (4) P, Q, R and S

21. Study the diagram below.



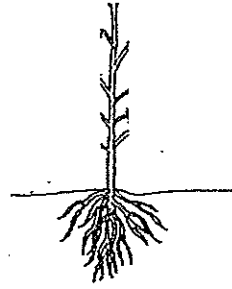
What is the function of part X?

- (1) It carries out digestion.
- (2) It releases digestive juices.
- (3) It helps in absorption of water from undigested food.
- (4) It is where digestion is completed and food is absorbed into the body.

22. Which of the following does **not** take place in the mouth?

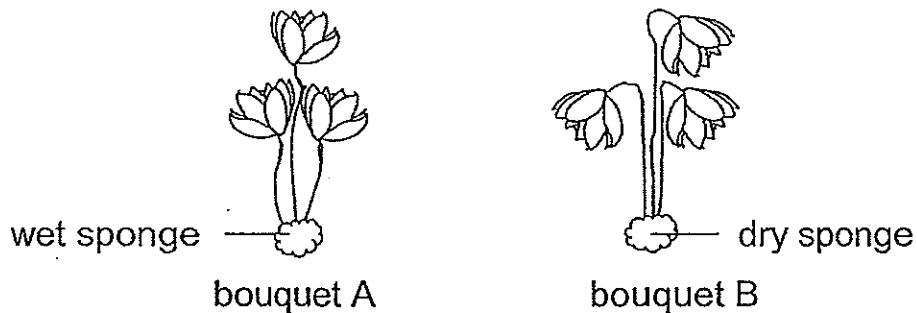
- (1) Digestive juices are released.
- (2) Food is mixed with the saliva.
- (3) Food is absorbed into the body.
- (4) Food is broken down into smaller pieces.

23. John cut off all the leaves of a healthy plant in his garden as shown below.



After two weeks of watering, he noticed that the plant died. The plant died because it could not _____.

- (1) bear fruit
 - (2) make food
 - (3) take in the water from the soil
 - (4) take in the minerals from the soil
24. Caili received two similar flower bouquets for her birthday as shown below. The roots of the flowers in both bouquets have been removed.



Two days later, the flowers in bouquet B withered and died while the flowers in bouquet A stayed fresh. Based on the diagram above, why did the flowers in bouquet B wither and die?

The flowers in bouquet B had no _____ so it withered and died.

- (1) soil
- (2) roots
- (3) water
- (4) minerals

End of Section A

Pei Chun Public School
Semestral Assessment 2 – 2014
Science
Primary 3

Name : _____ ()

Class : Pri. 3 ()

Date : 28 October 2014

Time : 1 h 20 min

Science Teacher : _____

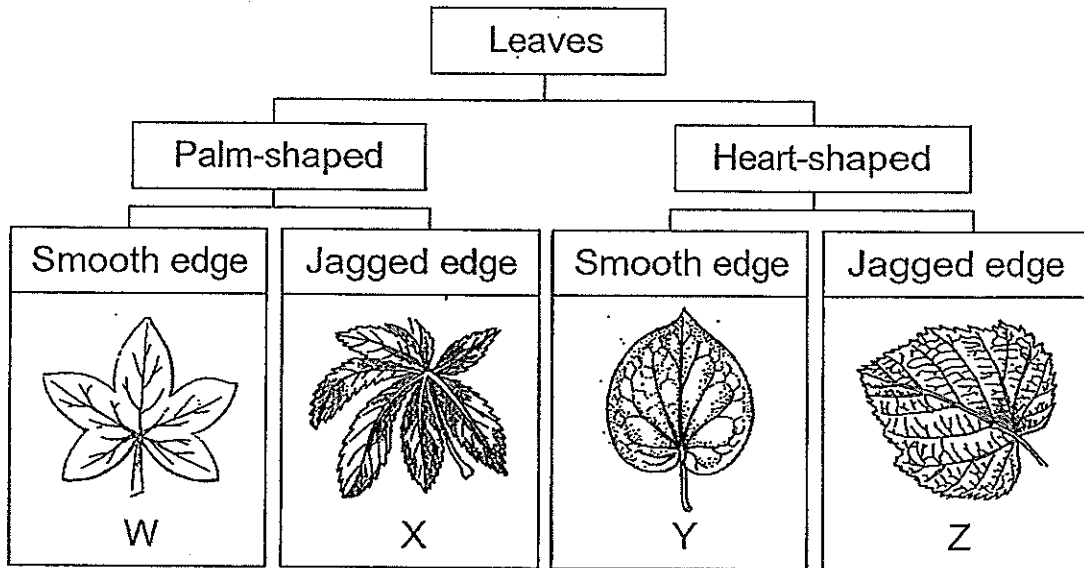
Parent's signature: _____

Section A	48
Section B	32
Total	80

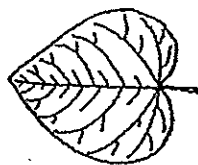
Section B (32 marks)

For questions 25 to 35, write your answers in the spaces provided.

25. Study the classification diagram below.

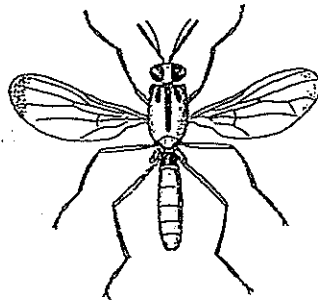


Based on the classification diagram, which two letters, W, X, Y, or Z, represent the leaves shown below? [2]



--	--

26. Study the animal shown below.



Animal Z

Based on the diagram, which of the characteristics listed below show(s) that animal Z is an insect?

Tick (✓) the correct answer(s) in the box(es).

[2]

	Characteristics	Tick (✓)
a)	It has a pair of eyes.	
b)	It has three body parts.	
c)	It has six legs.	
d)	It has wings.	

27. The table below shows the properties of materials P, Q and R.

	Sinks in water	Waterproof
P	✓	
Q		✓
R	✓	✓

a) State all the properties of material Q. [1]

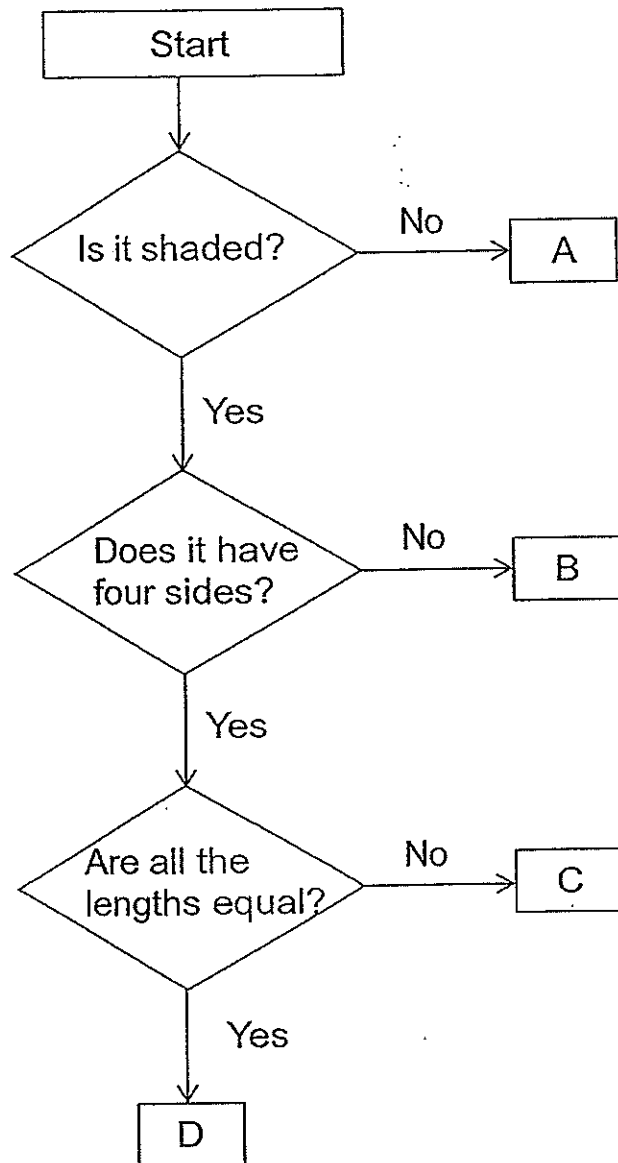
b) State the common property of materials P and R. [1]

c) Which material, P, Q, or R, is most suitable for making a swimming float as shown below? [1]

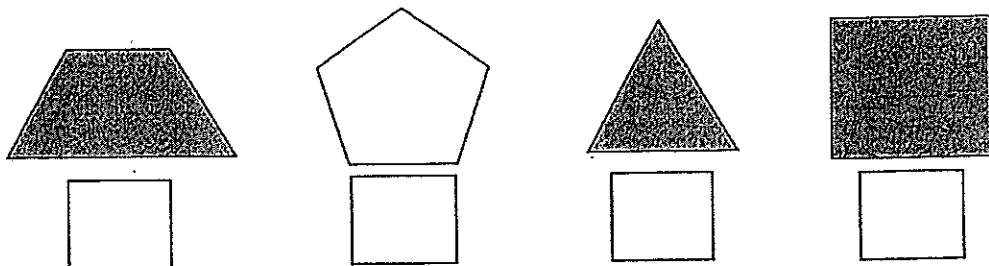
swimming float



28. Study the flowchart given below.

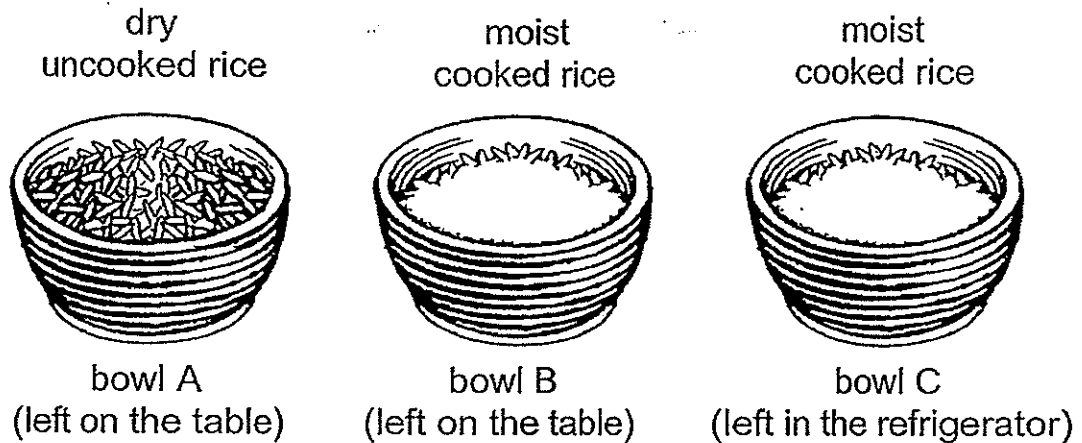


a) Use the information from the flowchart to identify the shapes below by filling in the blanks with A, B, C or D. [2]



b) How are shapes C and D similar? [1]

29. Selvi conducted an experiment using three bowls of rice as shown below.



After a few days, she noticed patches of mould growing on the cooked rice. She recorded her results in the table below.

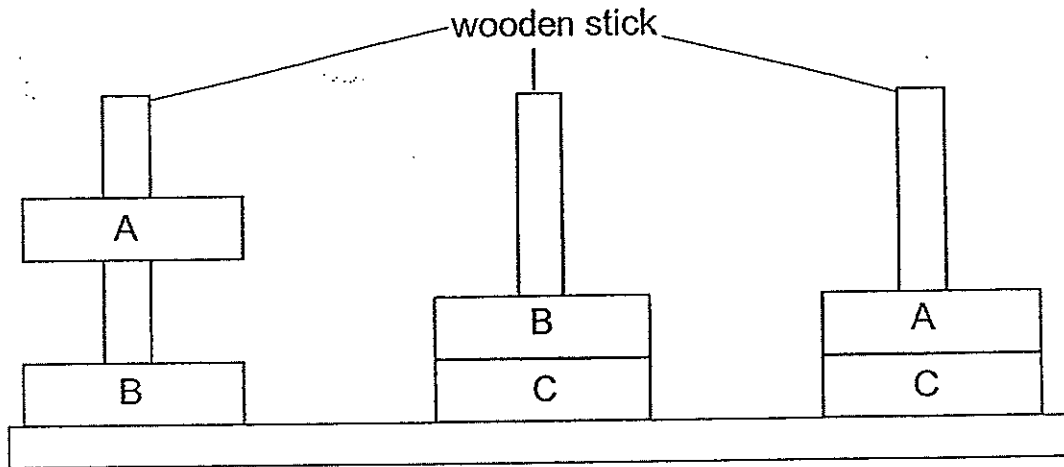
Bowl	Growth of mould				
	Day 1	Day 3	Day 5	Day 7	Day 10
A	nil	nil	nil	nil	nil
B	nil	+	++	+++	+++
C	nil	nil	+	++	+++

Key	
nil	No mould growth
+	Little mould growth
++	Some mould growth
+++	Lots of mould growth

- a) Based on Selvi's results, which bowl of rice, A, B or C, had mould growing on it first? [1]
-

- b) Explain why the bowl of rice you chose in (a) had mould growing on it faster than the other two bowls. [2]
-

30. Fazilah placed four metal rings, A, B, C through a wooden stick in different arrangements as shown in the diagram below.

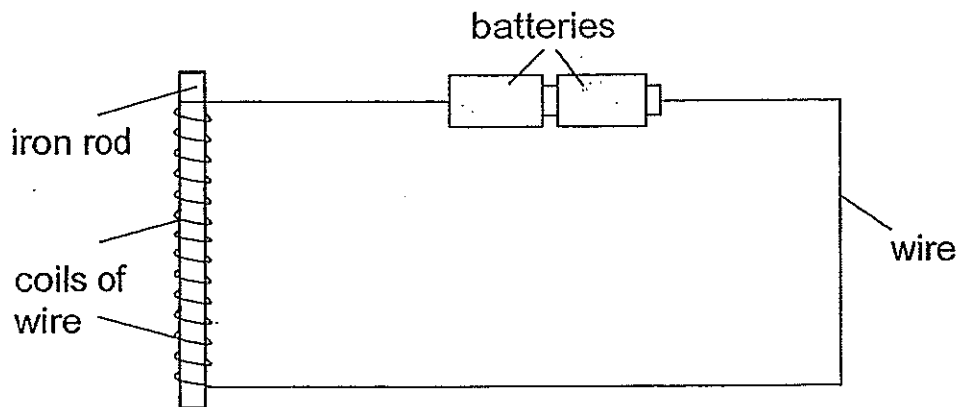


- a) Based on the diagrams above, which of the rings can Fazilah conclude to be magnets? [1]

- b) Explain your answer in (a). [2]

- c) Name a material that can be used to make the metal ring(s) stated in (a). [1]

31. Thomas set up an experiment as shown in the diagram below. When he lowered the iron rod into a tray of steel pins, he observed that it attracted some of the steel pins.



- a) Give a reason why the steel pins were attracted to the iron rod. [1]

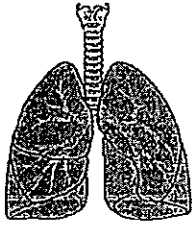
- b) Thomas wanted to increase the number of steel pins attracted to the iron rod. Suggest two ways he could do this. [2]

1st way: _____

2nd way: _____

32. Match the parts to the correct body system.

[3]



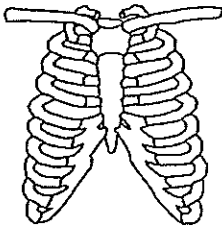
lungs •

• circulatory system



heart •

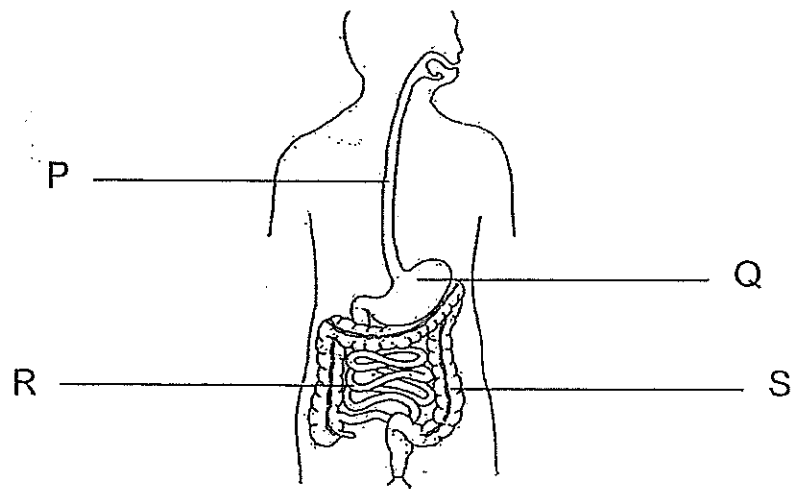
• skeletal system



rib •

• respiratory system

33. The diagram below shows the human digestive system.



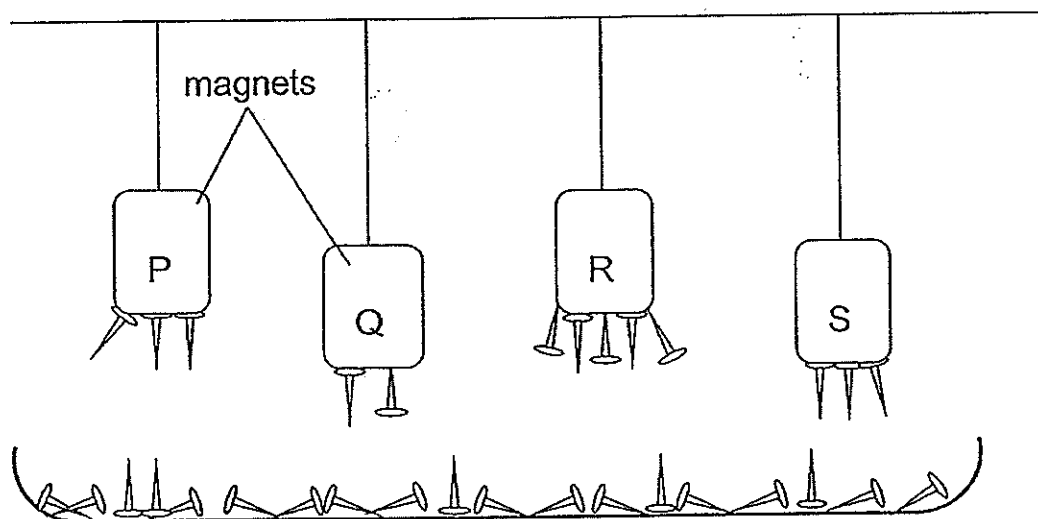
- a) Referring to the diagram, name the parts of the digestive system represented by the letters shown in the table below. [2]

Part	Part of the digestive system
P	
S	

- b) In which parts, P, Q, R and S, are digestive juices added? [1]

- c) In which part, P, Q, R or S, is digestion completed? [1]

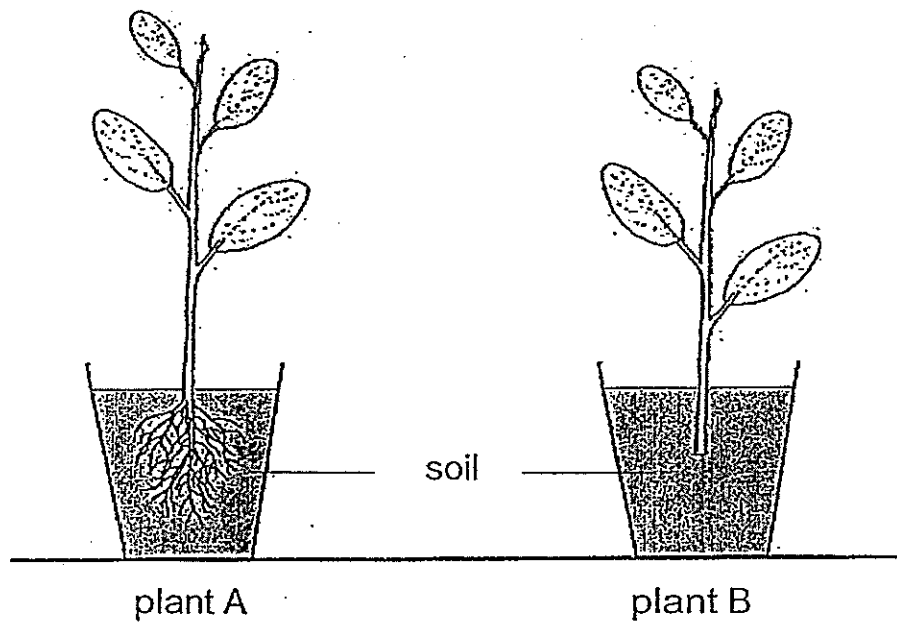
34. P, Q, R and S are magnets hanging from strings of two different lengths as shown in the diagram below. A tray of steel pins is placed below the magnets and different numbers of pins are attracted to the magnets.



- a) Which magnet is the strongest? [1]

- b) Give a reason for your answer in (a). [1]

35. Zaki had two similar plants, A and B. He removed the roots of plant B and planted it back into the pot as shown below.



Zaki observed that plant B fell out of its pot when there was strong wind, but not plant A.

- a) Explain why plant B fell out of its pot when there was strong wind.

[1]

- b) Name two substances that the roots take in for plants to grow well.

[2]

1: _____

2: _____

End of Section B

Set by : Mdm Yogeshwari Manikandan
Mr Zhang Qiyang
Mdm Salmisna Saleh
Vetted by: P3 Science teachers



Year: 2014
 Level: Primary 3
 School: Pei Chun Public School
 Subject: Science
 Semester: SA2

Q1	Q2	Q3	Q4	Q5	Q6	Q7	Q8	Q9	Q10
4	4	1	3	2	1	4	2	4	2
Q11	Q12	Q13	Q14	Q15	Q16	Q17	Q18	Q19	Q20
1	2	3	4	2	4	1	1	4	2
Q21	Q22	Q23	Q24						
3	3	2	3						

- 25) Y, X
- 26) b) It has three body parts and c) It has six legs
- 27) a) Material Q does not sink in water but is waterproof.
 b) Both of them sink in water.
 c) Q
- 28) a) C, A, B, D
 b) Both of them have four sides and are shaded.
- 29) a) Bowl B
 b) It is because mould needs moisture and warmth to grow, there is moisture in the bowl of rice and there is no moisture in a refrigerator.
- 30) a) A and B
 b) The like poles of A and B are facing each other causing them to repel.
 c) Iron
- 31) a) It is because it was made into an electromagnet.
 b) 1: Add more batteries 2: coil more coils around the iron rod
- 32) lungs → respiratory system
 Heart → circulatory system
 Rib → skeletal system
- 33) a) P – gullet S- large intestine
 b) Q and R
 c) R
- 34) a) R
 b) It was hanging further away from the tray of steel pins than the other magnets and it attracted the most pins.
- 35) a) It did not have its roots to grip firmly into the soil to prevent itself from falling when the strong wind blew.
 b) 1: Minerals 2: Water

