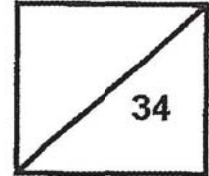




Rosyth School
Mid - Year Examination 2019
SCIENCE
Primary 3

Name: _____

Total
Marks:



Class: Pr 3 _____

Total time for Booklets A and B: 1 h 30 min

Register No. _____

Date: 16 May 2019

Parent's Signature: _____

BOOKLET A

Instructions to Pupils:

1. Do not open the booklets until you are told to do so.
2. Follow all instructions carefully.
3. This paper consists of 2 booklets, Booklet A and Booklet B.
4. For questions 1 to 17 in Booklet A, shade the correct ovals on the Optical Answer Sheet (OAS) provided using a 2B pencil.
5. For questions 18 to 26, give your answers in the spaces given in Booklet B.

* This booklet consists of 11 printed pages (including cover page).

This paper is not to be reproduced in part or whole without the permission of the Principal.

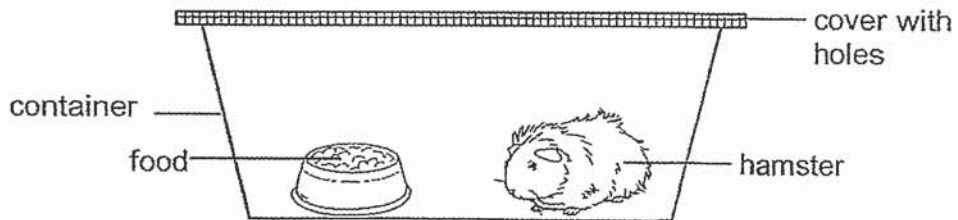
For each question from 1 to 17, four options are given. One of them is the correct answer. Make your choice (1, 2, 3 or 4). **Shade the correct oval (1, 2, 3 or 4) on the Optical Answer Sheet.** (34 marks)

1. Weiliang accidentally touched a hot stove and cried out in pain.



Which characteristic of living things does this show?

- (1) Living things grow.
 - (2) Living things reproduce.
 - (3) Living things respond to changes.
 - (4) Living things need air, food and water to survive.
2. Swee Ling placed her pet hamster in a container. The container was placed near a window. The container has a cover with holes on top as shown below.



She fed the hamster every day. After one week, the hamster died.

Based on the above information, which one of the following is most likely to be the reason why the hamster died?

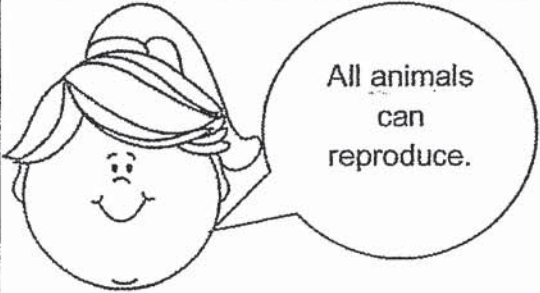
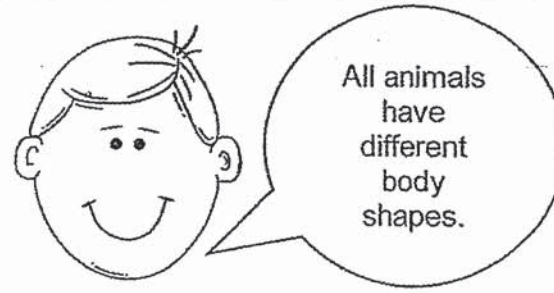
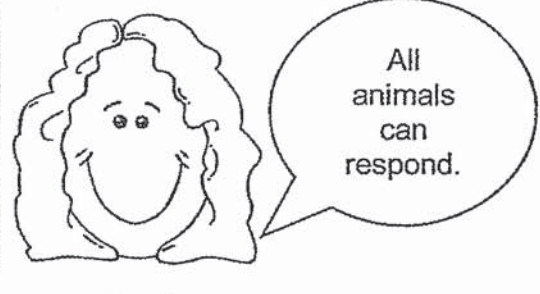
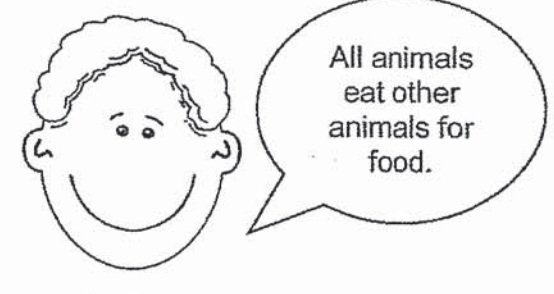
- (1) There was no water.
- (2) There was no sunlight.
- (3) There was no air in the tank.
- (4) There was no room for the hamster to move about.

3. James kept some rabbits in a metal-wire cage. He fed them daily with food and water. At the end of every three months, he recorded the number of rabbits he had as shown in the table below. No rabbits were added or taken out of the cage.

Month	Number of rabbits
January	5
April	7
July	11

What could be a possible reason for the change in the number of rabbits from January to July?

- (1) They have died.
 - (2) They have grown.
 - (3) They have laid eggs.
 - (4) They have given birth.
4. Four students made some statements about animals as shown below.

 <p>Mary</p>	 <p>David</p>
 <p>Nurul</p>	 <p>Jayden</p>

Which of the students' statements is not correct?

- (1) Mary
- (2) David
- (3) Nurul
- (4) Jayden

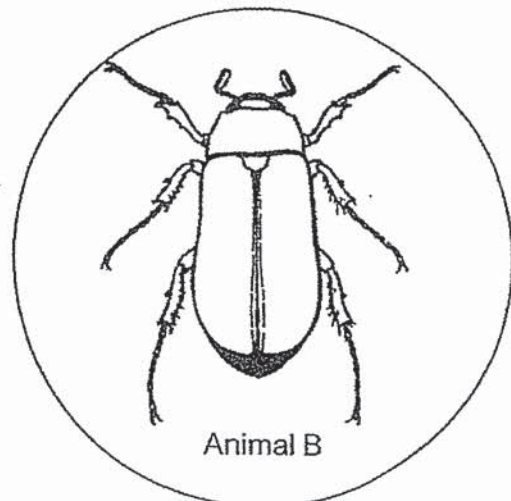
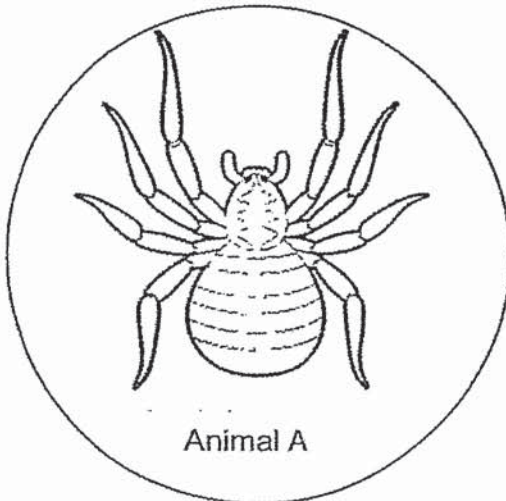
5. Mary observed an animal with the following characteristics.

- It lays eggs.
- It has dry skin with scales.
- It uses its legs to crawl but not swim or fly.

Which one of the following groups does the animal belong to?

- (1) Birds
(2) Reptiles
(3) Mammals
(4) Amphibians

6. Zul read about two animals, A and B, as shown in the pictures below. He wanted to find out which animal below is an insect.

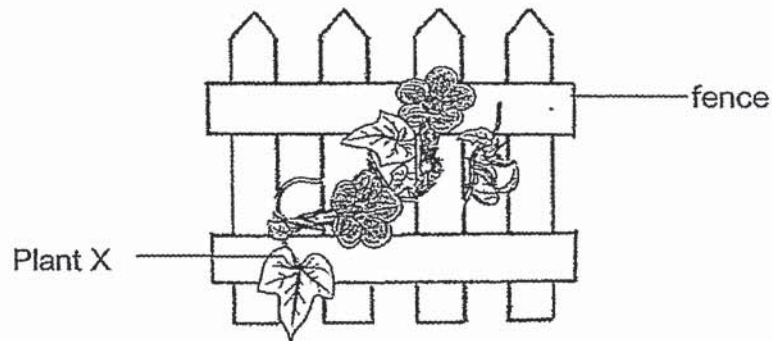


Which of the following actions, A, B and C, would definitely help Zul decide if the animal is an insect?

- A: Count the number of legs.
B: Count the number of wings.
C: Count the number of body parts.

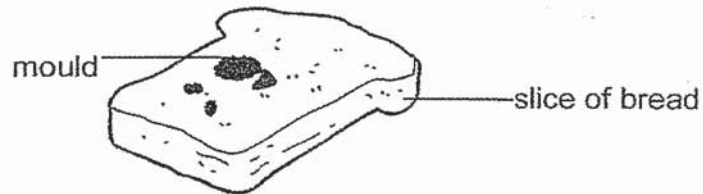
- (1) A only
(2) B only
(3) A and C only
(4) A, B and C

7. Siti saw Plant X growing in her school garden as shown below. She made a few statements based on her observations.



Which of the following statements is correct?

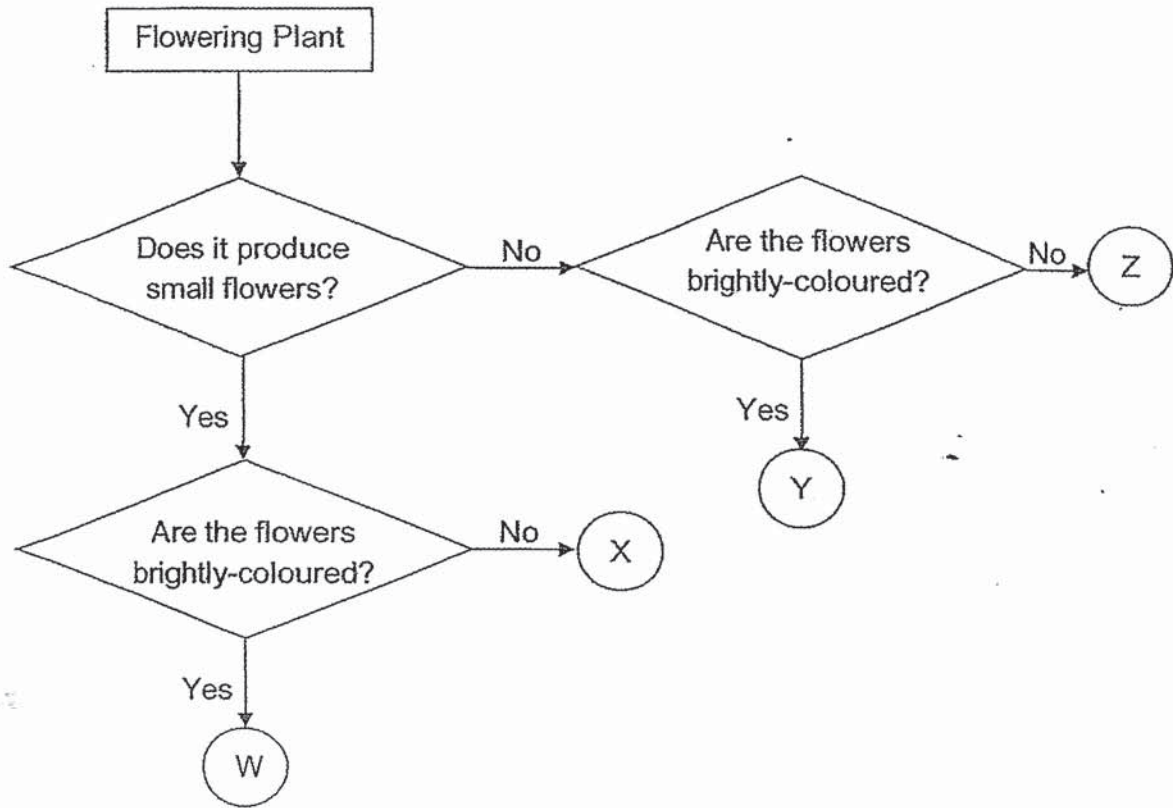
- (1) The plant has a strong stem.
 - (2) The plant reproduce from seeds.
 - (3) The plant is a non-flowering plant.
 - (4) The plant does not need food to survive.
8. Susan observed some mould on the slice of bread as shown below.



Which of the following statements is true about the mould growing on the bread?

- (1) It is a plant.
- (2) It is a fungi.
- (3) It is an animal.
- (4) It is a bacteria.





9. The flowchart below gives the characteristics of some flowering plants.



Sam observed that insects are attracted to big and brightly-coloured flowers. Which group of plants could the insects be attracted to?

- (1) W
- (2) X
- (3) Y
- (4) Z

10. Study the classification table below.

Living Things	
Group A	Group B
	
	

Based on how the living things are grouped, which set of headings is correct for Group A and B?

	Group A	Group B
(1)	Grow on land	Grow in water
(2)	Flowering plants	Non-flowering plants
(3)	Reproduce by seeds	Reproduce by spores
(4)	Do not make their own food	Make their own food

11. Study the table below.

P	Q
marble	glass
spoon	plastic
gloves	rubber

Which one of the following are suitable for headings P and Q?

	P	Q
(1)	Objects	Materials
(2)	Uses	Objects
(3)	Uses	Properties
(4)	Materials	Properties

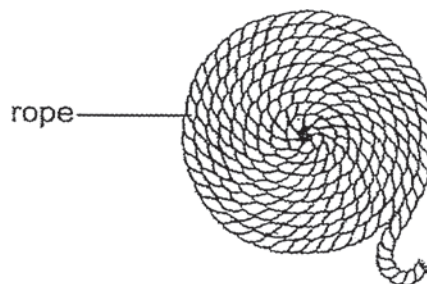
12. Danial had a rod. He was able to bend it into the new shape as shown below.



Which of the following materials could the rod be made from?

- (1) wood
- (2) ceramic
- (3) metal
- (4) styrofoam

13. Ali rolled a long, straight rope into a coil as shown.



Which property allowed the rope to be coiled up?

- (1) flexibility
- (2) strength
- (3) transparency
- (4) absorbency

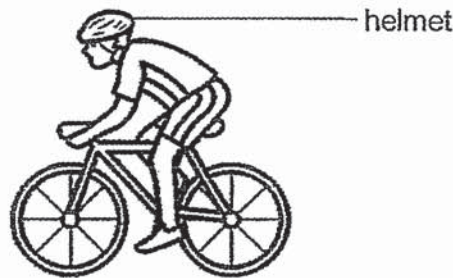
14. The properties of a material are shown below.

- It is not flexible.
- It is waterproof.
- It allows light to pass

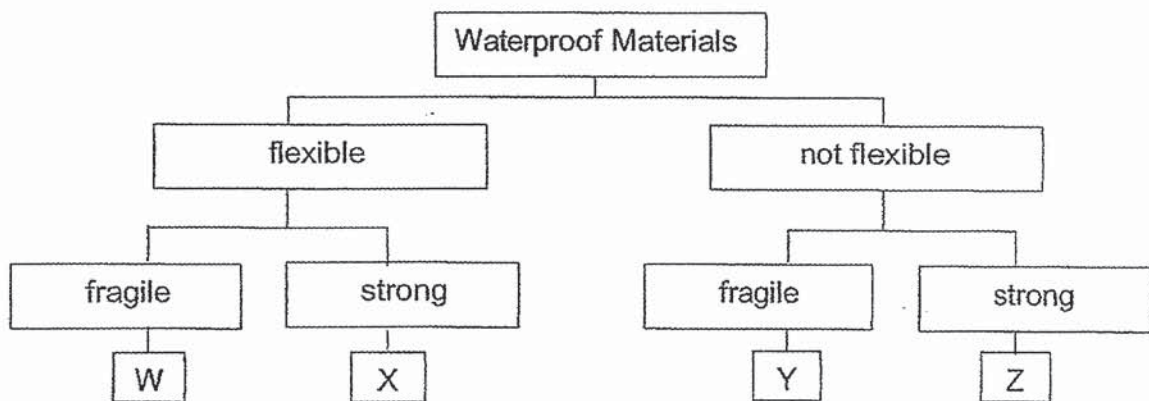
Which one of the following is most likely to be the material she had described?

- | | |
|-----------|------------|
| (1) glass | (2) wood |
| (3) metal | (4) rubber |

15. Mr. Tan wanted to select the best material for making a helmet.



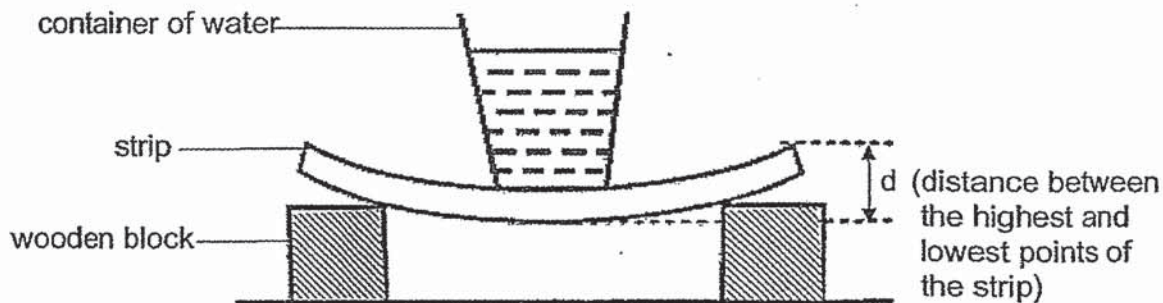
Below is a classification chart that shows the properties of some materials, W, X, Y and Z.



Based on the classification chart above, which one of the following materials is the best choice for making helmets?

- | | |
|-------|-------|
| (1) W | (2) X |
| (3) Y | (4) Z |

16. Mary set up an experiment as shown below to compare a property of four strips, P, Q, R and S, which are made of different materials.



For each strip, she added 100 cm^3 of water into the container and measured the distance, d . Her results are shown below.

Strip	Amount of water added into the container (cm^3)	d (cm)
P	100	1
Q	100	3
R	100	5
S	100	7

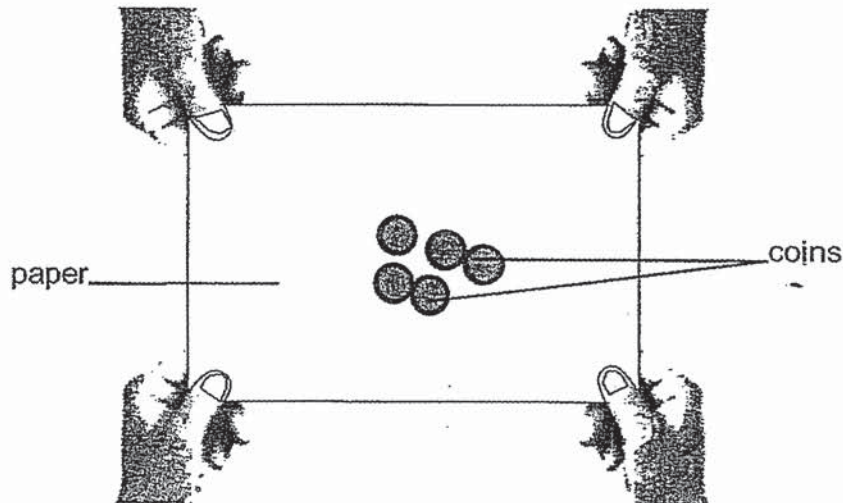
Based on Mary's experiment, which strip is the most suitable for making a food tray as shown below?



- (1) P
(3) R

- (2) Q
(4) S

17. Pete conducted an experiment to compare the strength of three types of paper when wet. He wet one type of paper with water and asked two friends to hold the paper. He then added one coin at a time onto the paper until the paper tore. He repeated this for the other two types of paper.



What data should he record to compare the strength of the papers?

- (1) size of the paper he used
- (2) amount of water he used for each paper
- (3) number of coins each paper could hold without tearing
- (4) length of time each paper could hold the coins without tearing

End of Booklet A

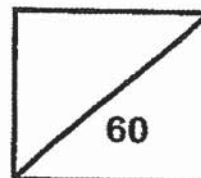
(Go on to Booklet B)



Rosyth School
Mid - Year Examination 2019
SCIENCE
Primary 3

Name: _____

Total
Marks:



Class: Pr 3 _____

Total time for Booklets A and B: 1 h 30 min

Register No. _____

Date: 16 May 2019

Parent's Signature: _____

BOOKLET B

Instructions to Pupils:

1. For questions 18 to 26, give your answers in the spaces given in this Booklet B.

	Maximum	Marks Obtained
Booklet A	34 marks	
Booklet B	26 marks	
Total	60 marks	

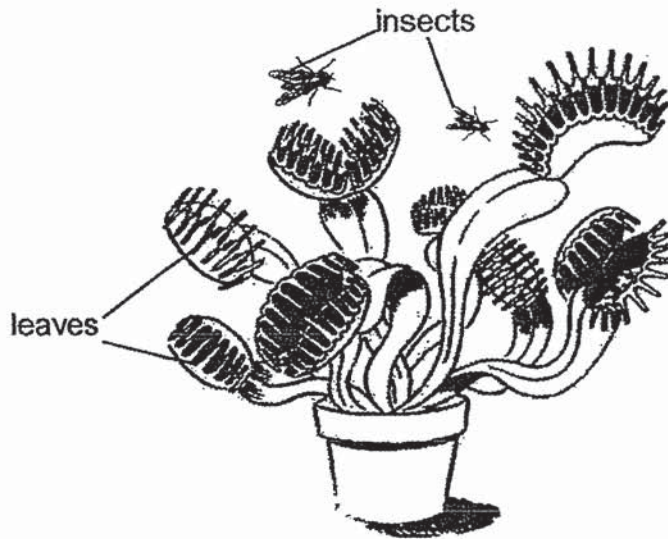
* This booklet consists of 9 printed pages (including cover page).

This paper is not to be reproduced in part or whole without the permission of the Principal.

For questions 18 to 26, write your answers in this booklet.

(26 marks)

18. John saw a plant during his recent trip to a garden. He saw some insects flying near the plant. As the insects touched the leaves, the leaves closed and trapped the insects.



John recorded his observations in the table below.

Which characteristics of living things were observed by John?

[2]

Observation	Characteristic of living things
(a) Some insects were flying near the plant.	<hr/> <hr/> <hr/> <hr/>
(b) As the insects touched the leaves, the leaves snapped shut	<hr/> <hr/> <hr/> <hr/>

19. Study the two animals shown below.



Animal A



Animal B

(a) Based on the pictures above, state one similarity between animal A and animal B. (Do not compare their size and shape.) [1]

(b) Animal A and B belong to different animal groups. Using a ruler, match Animal A and B to the correct animal group. [1]

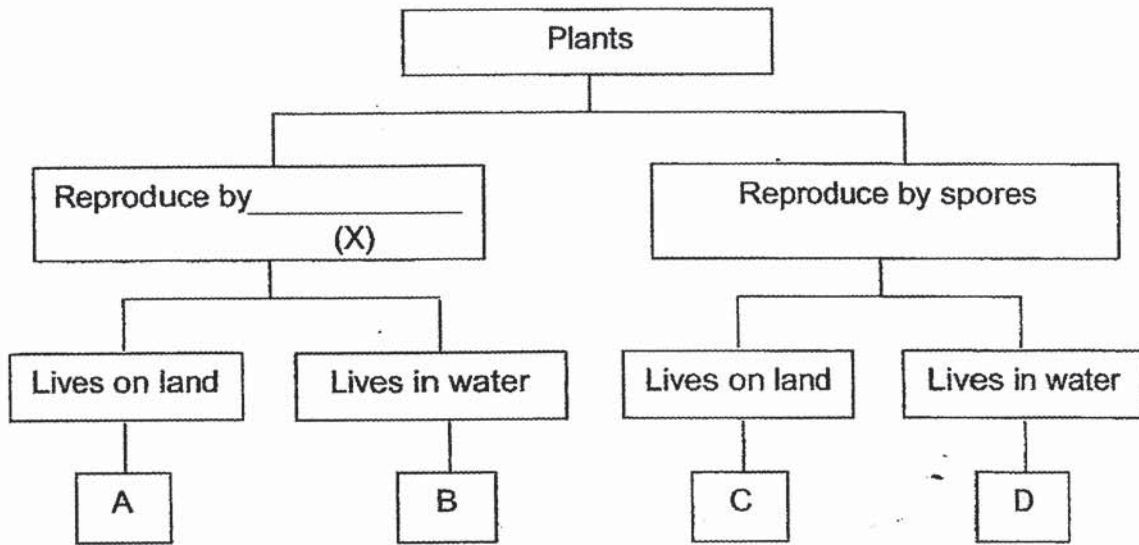
Animal A	●	Amphibian
Animal B	●	Mammal
		Bird
		Reptile

(c) Based on your observation, give a reason for each of your choice in (b). [2]

Animal A: _____

Animal B: _____

20. Study the classification chart as shown below.

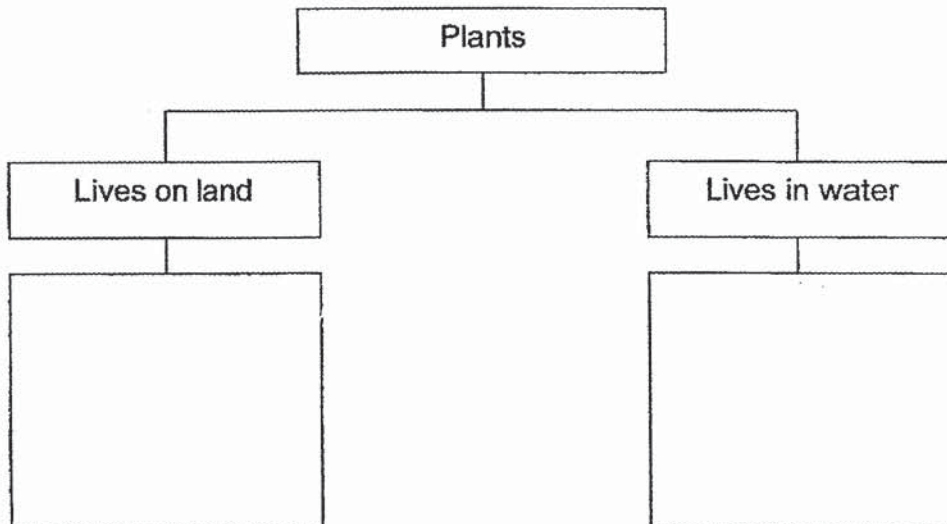


(a) What is a suitable word for X?

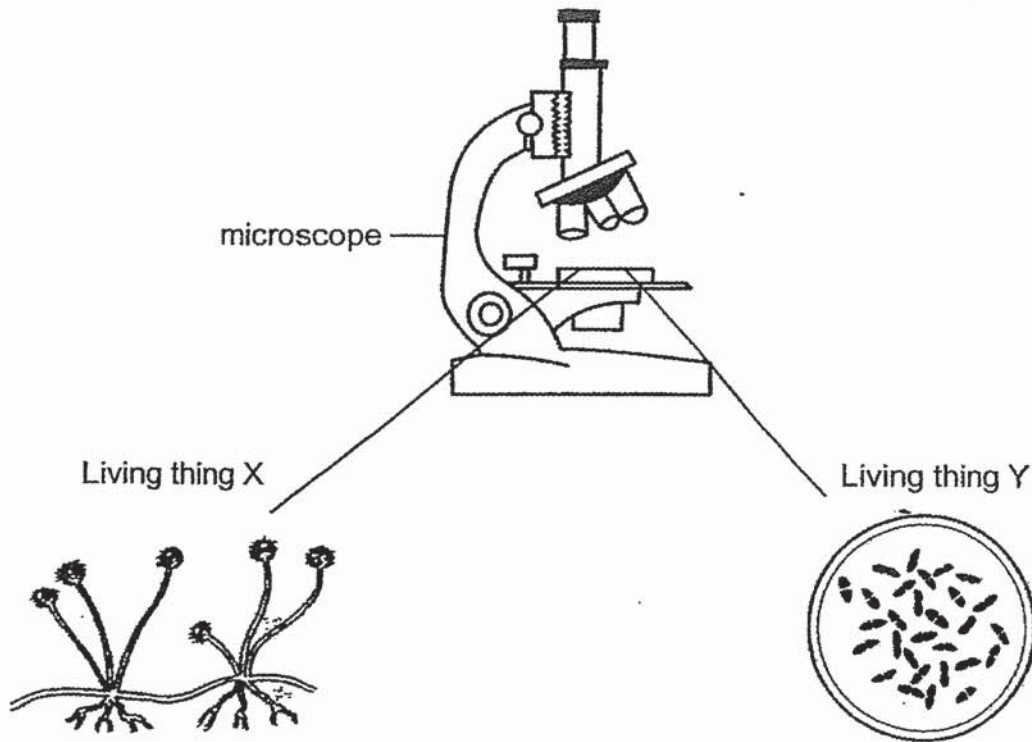
[1]

(b) The chart below shows another way of classifying plants. Complete the chart by writing, A, B, C and D, in the boxes below.

[1]



21. Dylan observed two different types of living things using a microscope as shown below.

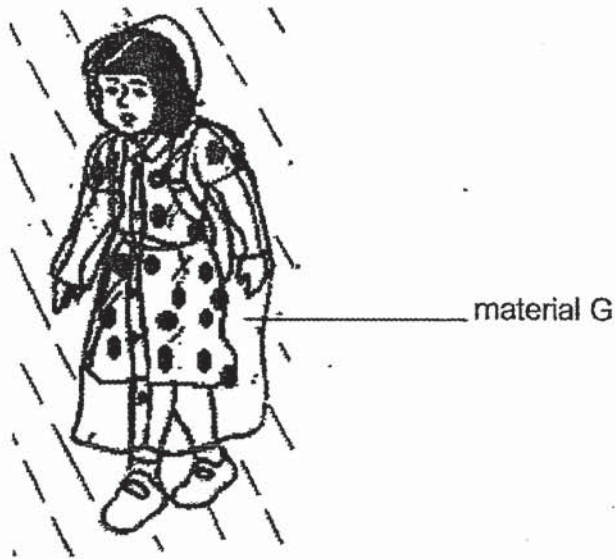


- (a) Why does he need to use the microscope to observe the living things? [1]

- (b) Dylan managed to find out more about the group that they belonged to as well as their methods of reproduction. However, some of the information were missing. Complete the missing information in the box below. [2]

	Group	Method of reproduction
Living thing X	Fungi	(i) By _____
Living thing Y	(ii) _____	By splitting into two

22. Rena wears a raincoat made from material G to keep out the rain as shown below.



Based on the picture, list two properties of material G.

[2]

(i) _____

(ii) _____

23. Study the picture of an oven below.



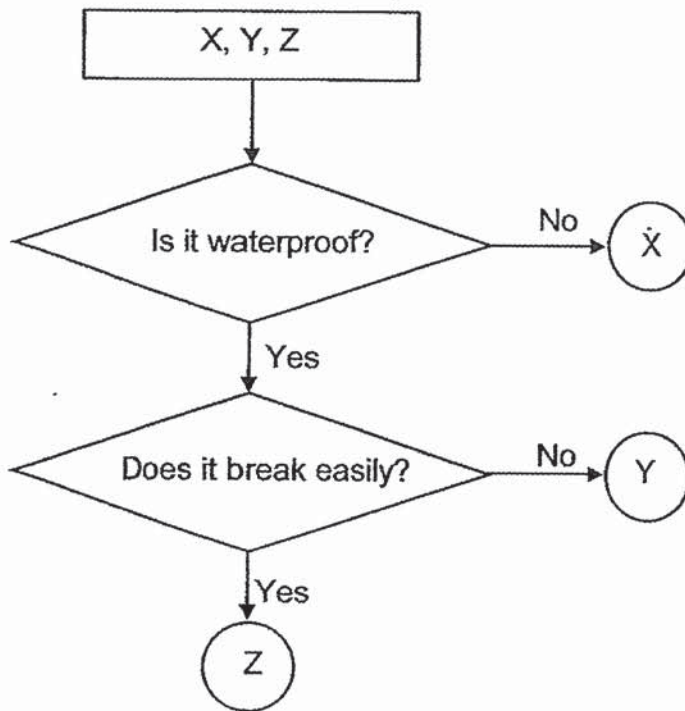
(a) What material is used to make part A of the oven?

[1]

(b) What material is used to make part B of the oven? Explain your choice.

[2]

24. Study the flow chart below carefully.

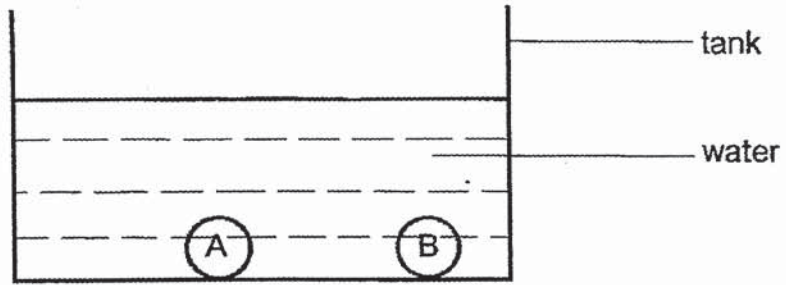


(a) Based on the flow chart, what are the characteristics of Y? [1]

(b) What is the difference between X and Z? [1]

(c) What is the similarity between Y and Z? [1]

25. Jim put two balls made of different materials into a tank of water.



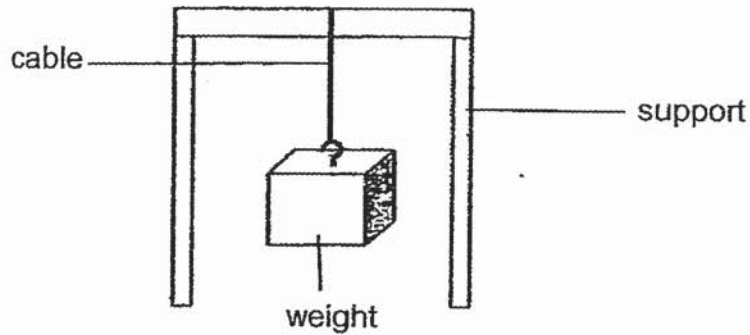
Jim then put Ball C in the water. Ball C floated on the water.

- (a) Draw Ball C in the tank. [1]
- (b) Jim used a table to group the balls, A, B and C in the tank as shown below. Write down suitable headings for the table below on the lines provided. [1]

(i) _____	(ii) _____
A B	C

- (c) Jim picked up Ball A and Ball B from the tank and he found that A is made of a material that is not waterproof but B is made of a waterproof material. What material could A be made of? [1]
-

26. Mr. Lee carried out a test as shown below. He used 3 different cables A, B and C and added weights to each cable until it broke.

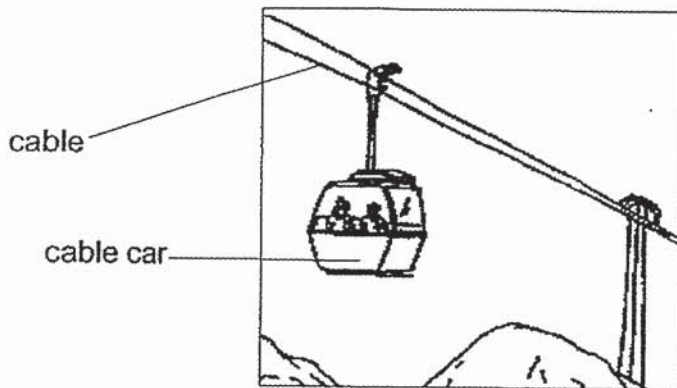


Cable	Weight before the cable breaks (kg)
A	1000
B	100
C	10

- (a) What property of the cables is he testing?

[1]

Mr Lee is going to use one of the cables for the cable car shown in the picture below.



- (b) Which cable A, B or C should be used for the cable car? Explain your answer.

[2]

- (c) Which material, metal or plastic, are the cables of the cable car made of? Explain your choice.

[1]

End of paper

ANSWER KEY

YEAR : 2019
LEVEL : PRIMARY 3
SCHOOL : ROSYTH SCHOOL
SUBJECT : SCIENCE
TERM : MYE

SECTION A

Q1	3	Q2	1	Q3	4	Q4	4	Q5	2
Q6	3	Q7	2	Q8	2	Q9	3	Q10	4
Q11	1	Q12	3	Q13	1	Q14	1	Q15	4
Q16	1	Q17	3						

SECTION B

Q18 (a) Living things can move by themselves.

(b) Living things respond to changes.

Q19 (a) They both have wings.

(b) Animal A ——— Bird

Animal B ——— Mammal

(c) Animal A : It has feathers just like all birds.

Animal B : It has hairs just like all mammals.

Q20 (a) It is "seeds"

(b) AC BD

Q21 (a) He needs to use the microscope because he cannot see the thing with his naked eyes as they are microorganisms.

(b)(i) sporer

(ii) Bacteria

Q22 (i) waterproof

(ii) flexible

Q23 (a) The material is metal.

(b) The material is glass because it lets light pass through and people can see the food inside it.

Q24 (a) It is waterproof and does not break easily.

(b) Z is waterproof but X is not.

(c) They both are waterproof.

Q25 (a) draw Ball C on top of the water

(b)(i) sink in water

(ii) float in water

(c) A can be made of wood.

Q26 (a) He is testing the cables strength.

(b) Cable A should be used as it is the strongest and a cable car's cable must be strong and cannot break easily so that it can withstand the weight of the cable car and its passengers.

(c) Metal is stronger than plastic to withstand the weight of the cable car without breaking.

2
220