

SINGAPORE CHINESE GIRLS' SCHOOL (PRIMARY)

FIRST SEMESTRAL ASSESSMENT 2019

NAME: _____ ()

DATE: 13 MAY 2019

CLASS _____

Parent's Signature:

SCIENCE
BOOKLET A

15 questions

30 marks

Total time for Booklets A & B: 1 h

DO NOT OPEN THIS BOOKLET UNTIL YOU ARE TOLD TO DO SO.

FOLLOW ALL INSTRUCTIONS CAREFULLY.

Part I (30 marks)

For each question from 1 to 15, four options are given. One of them is the correct answer. Make your choice (1, 2, 3 or 4). **Shade the correct oval (1, 2, 3 or 4) on the Optical Answer Sheet.**

1. Which of the following is a living thing?

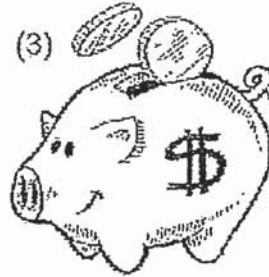
(1)



(2)



(3)

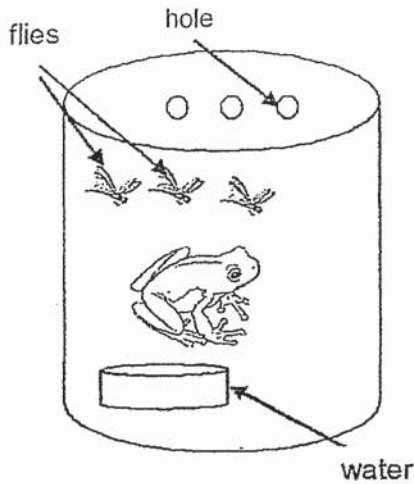


(4)

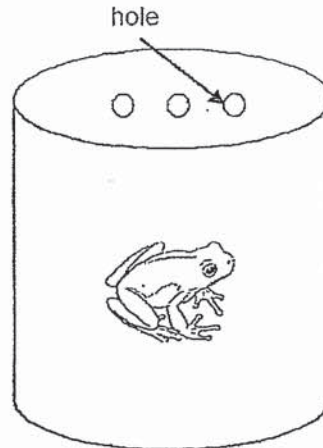


2. 4 frogs of similar size were kept separately in 4 similar-sized containers. In which container will the frog still be alive after 1 week?

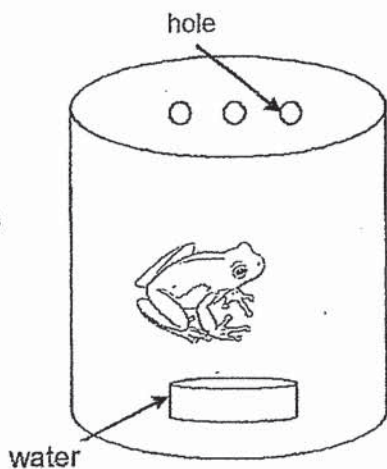
(1)



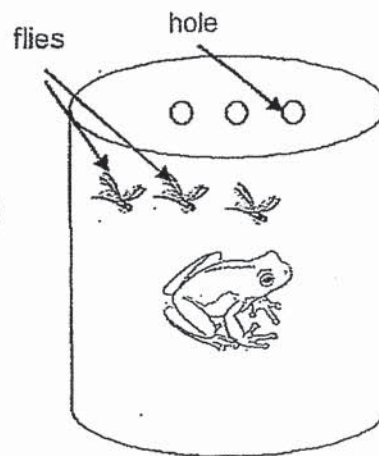
(2)



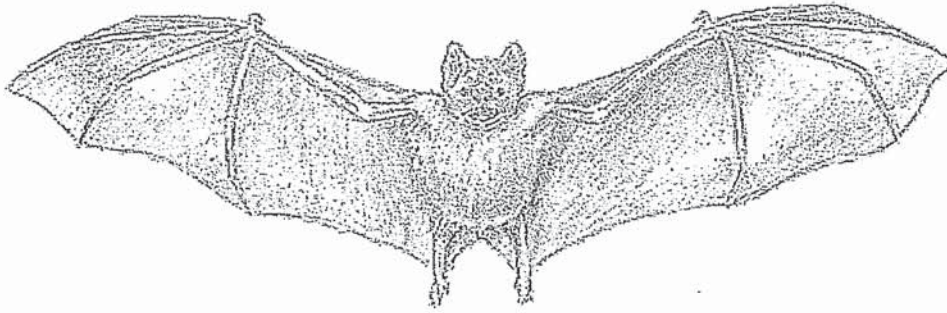
(3)



(4)



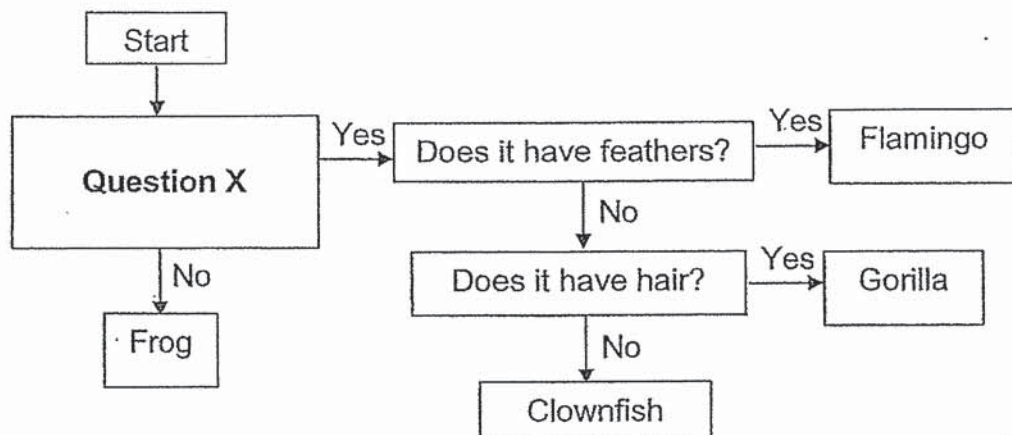
3. The picture below shows a bat.



Which of the following characteristics tells you that the bat is definitely a mammal?

- (1) It has wings.
- (2) It lives on land.
- (3) It breathes with lungs.
- (4) It feeds its young with milk.

4. Study the flowchart below.



Which of the following is a suitable Question X?

- (1) Does it lay eggs?
- (2) Does it breathe through gills?
- (3) Does it have outer body covering?
- (4) Does it suckle its young with milk?

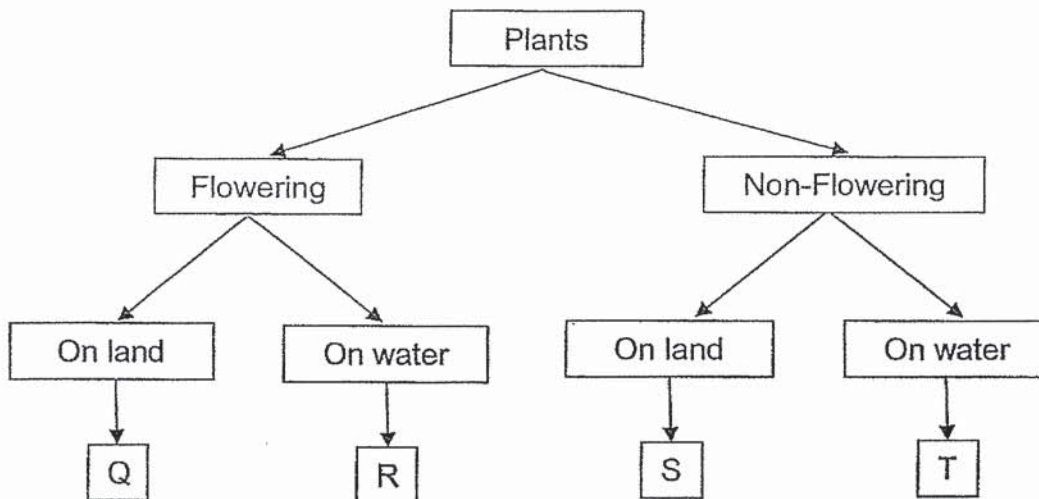
5. The table below shows the characteristics of 4 animals, R, S, T and U.

Animal	Has wings	Has feelers	Has 6 legs	Has 8 legs
R	✓	✓	X	✓
S	X	✓	✓	X
T	✓	X	X	X
U	X	X	X	X

Which animal is most likely to be an insect?

- (1) R
(2) S
(3) T
(4) U

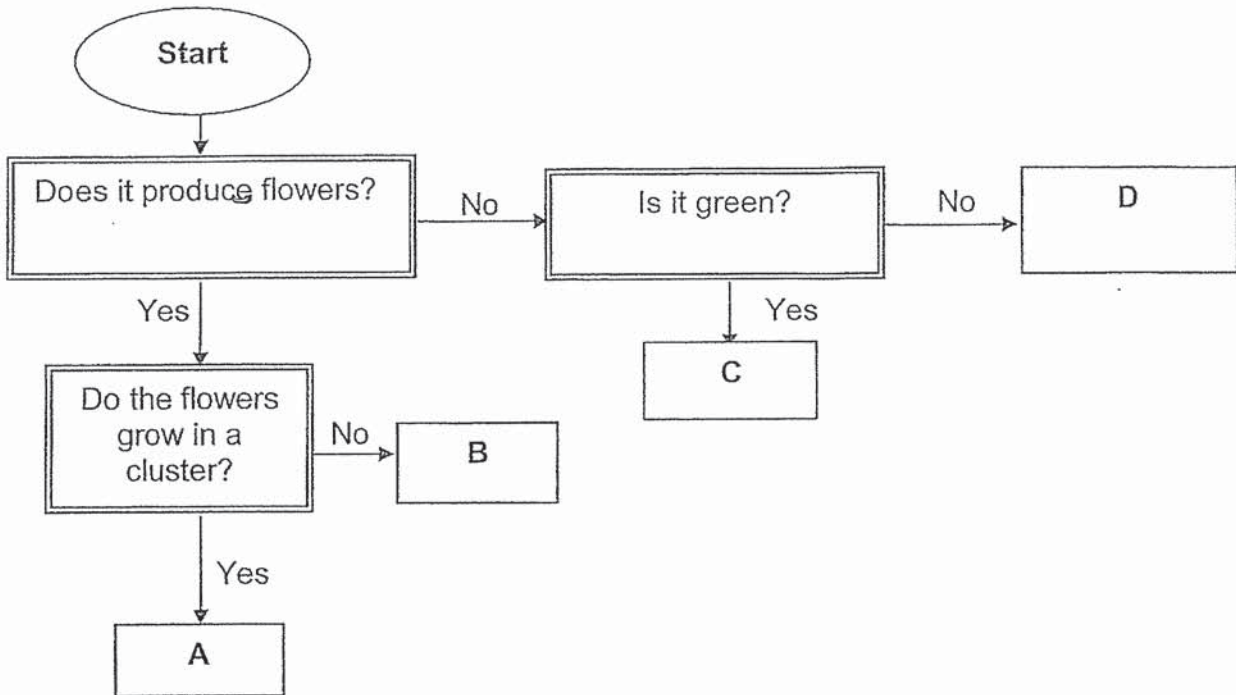
6. Study the classification chart below.



Which group, Q, R, S or T would a rose plant belong to?

- (1) Q
(2) R
(3) S
(4) T

7. Study the flowchart below.



Which of the following statements is true?

- (1) A produces fruits.
- (2) B produces spores.
- (3) C reproduces by seeds.
- (4) D does not produce spores.

8. Which of the following cannot be classified together with the rest?

- (1) Grass
- (2) Green bean plant
- (3) Toadstool
- (4) Mango tree

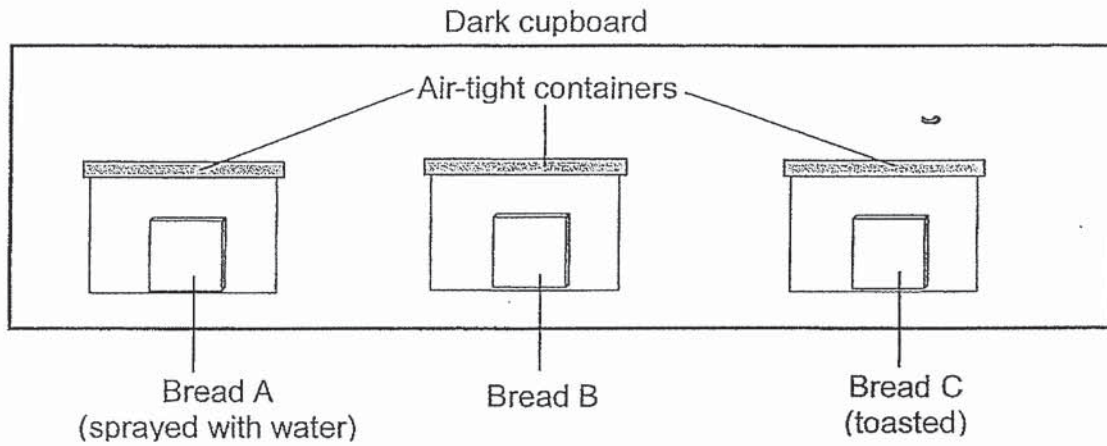
9. 4 students made the following statements about bacteria.

- Amy : All bacteria are harmful.
- Beth : Bacteria are non-living things.
- Chris : Bacteria can be found all around us.
- Debbie : Bacteria cannot be seen without the help of a microscope.

Who is/are correct?

- (1) Debbie only
- (2) Amy and Beth
- (3) Chris and Debbie
- (4) Amy and Chris

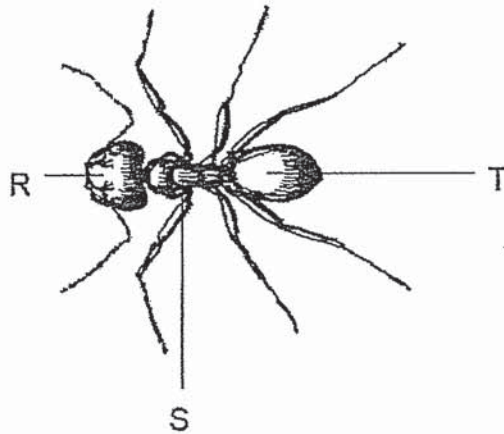
10. 3 similar slices of fresh bread were kept in similar air-tight containers. All the containers were then kept in a warm place for a week.



After a week, patches of mould were seen on the bread.

Which slice/s of bread had mould on them?

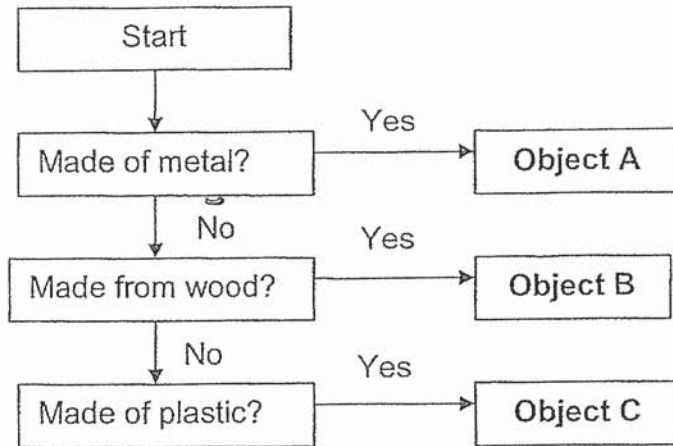
- (1) A only
 (2) A and B
 (3) A and C
 (4) B and C
11. The picture below shows an ant.



What are parts R, S and T?

	R	S	T
(1)	Head	Thorax	Abdomen
(2)	Abdomen	Thorax	Head
(3)	Head	Abdomen	Thorax
(4)	Thorax	Abdomen	Head

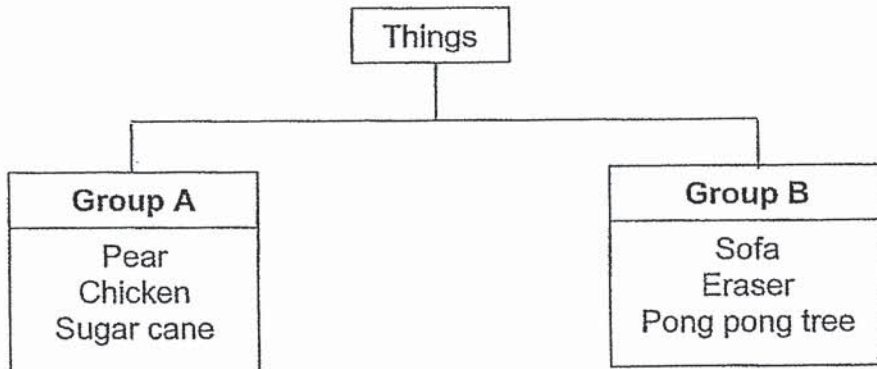
12. Study the flowchart below.



What do objects A, B and C represent?

	A	B	C
(1)	worksheet	raincoat	steel spoon
(2)	raincoat	steel spoon	worksheet
(3)	steel spoon	raincoat	worksheet
(4)	steel spoon	worksheet	raincoat

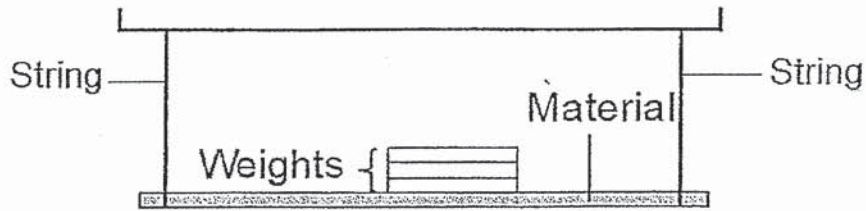
13. Study the classification chart below.



Which of the following shows the correct headings for Groups A and B?

	Group A	Group B
(1)	Sweet	Salty
(2)	Edible	Inedible
(3)	Living things	Non-living things
(4)	Can reproduce	Cannot reproduce

14. Leanne wanted to find out which material, E, F, G or H, is the strongest. She conducted an experiment as shown below.

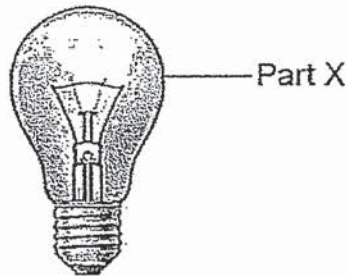


She added weights onto each material until the material broke and recorded the results of her experiment in the table below.

Material	Mass of weights (kg)
E	5
F	1
G	2
H	4

Based on the results of Vera's experiment, which material is the strongest?

- (1) E
(2) F
(3) G
(4) H
15. The picture below shows a light bulb.



Which of the following properties is most important for part X?

- (1) Can float in water
(2) Able to break easily
(3) Can be stretched easily
(4) Light can pass through

SINGAPORE CHINESE GIRLS' SCHOOL (PRIMARY)

FIRST SEMESTRAL ASSESSMENT 2019

NAME: _____ ()

DATE: 13 may 2019

CLASS: _____

Parent's Signature: _____

SCIENCE

BOOKLET B

	Total Actual Marks	Total Possible Marks
Booklet A		30
Booklet B		20
Total		50

7 questions

20 marks

Total time for Booklets A & B: 1 h

DO NOT OPEN THIS BOOKLET UNTIL YOU ARE TOLD TO DO SO.

FOLLOW ALL INSTRUCTIONS CAREFULLY.

Part II (20 marks)

Answer all the following questions.

16. Study the table below and answer the following questions.

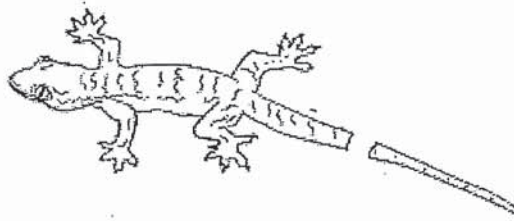
Animals	How it reproduces	Body covering	Ability to fly
P	Lay eggs	Scales	No
Q	Give birth to young alive	Hair	Yes
R	Lay eggs	Moist skin	No
S	Lay eggs	Hair	No

a) State one similarity between Animal P and Animal R. (1m)

b) Describe Animal S. (1m)

c) Which animal is most likely to be a frog? (1m)

17. The diagram below shows a lizard.



a) The lizard drops its tail when faced with danger.
What characteristic of living things does this show? (1m)

b) Circle the animal grouping the lizard belongs to: (1m)

mammal

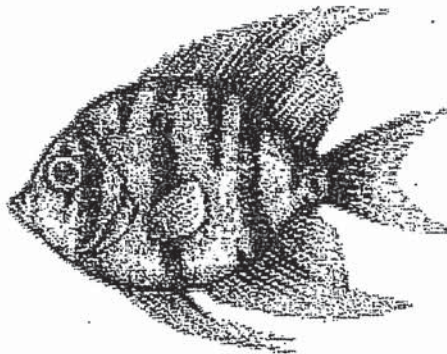
bird

insect

reptile

insect

c)

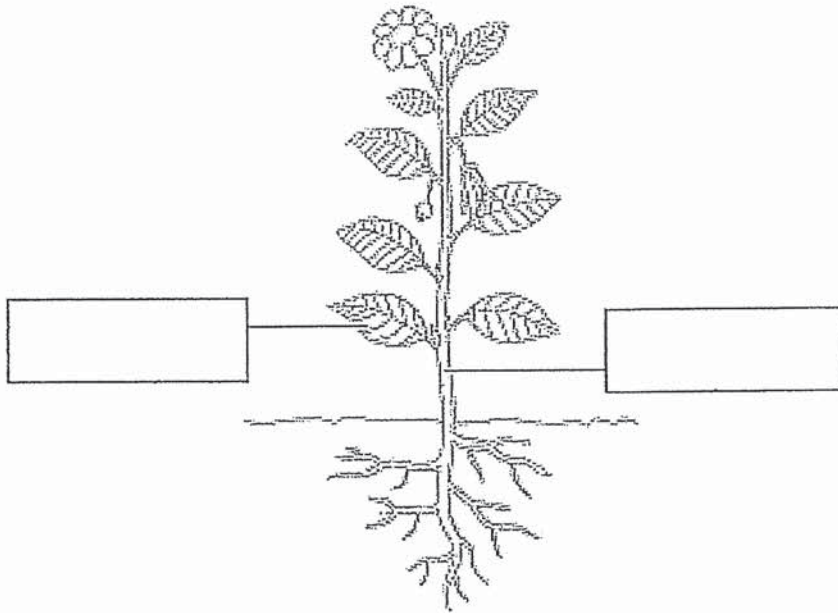


The picture above shows a fish.

State one reason why the lizard cannot be in the fish group. (1m)

18a) Study the diagram below.
Label the parts of the plant.

(2m)



The plant above reproduces by _____ (1m)

b) Look at the picture of the 2 organisms below.



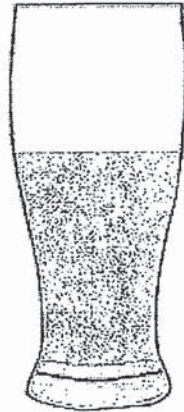
Bird's nest fern



Mushroom

Both organisms reproduce by _____ (1m)

19. A glass of fresh milk was left on the table in a room for a few days.



Jessica drank the milk without knowing.
The milk tasted sour and after a few hours, Jessica felt ill.

Mother said some organisms were in the milk that caused it to turn bad.

- a) What was in the milk that caused it to turn bad? (1m)

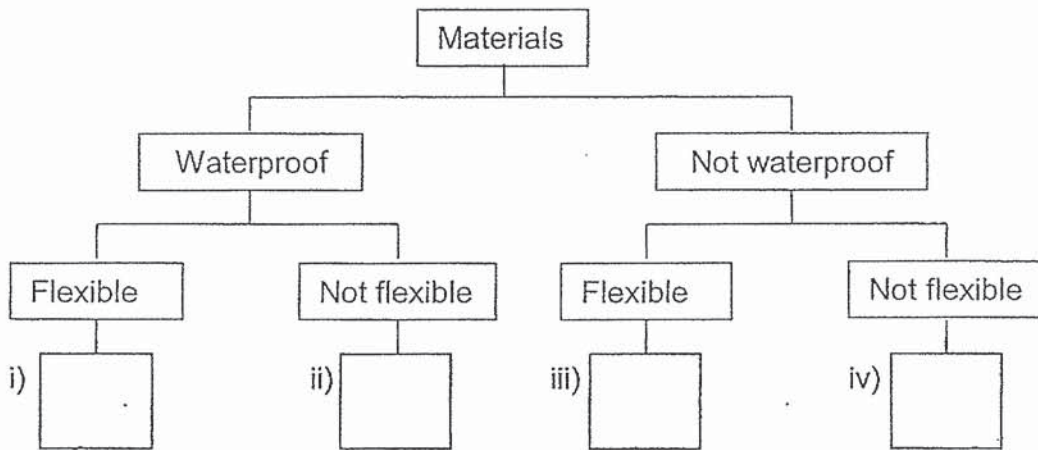
- b) Mother says fresh milk should be kept in the refrigerator to prevent it from turning bad.

Explain why. (1m)

20. The table below provides information on 4 materials, A, B, C and D.

Materials	Characteristics	
	Waterproof	Flexible
A	✓	✓
B	x	x
C	x	✓
D	✓	x

a) Using the information given in the table, complete the classification chart below with the materials A, B, C and D. (2m)



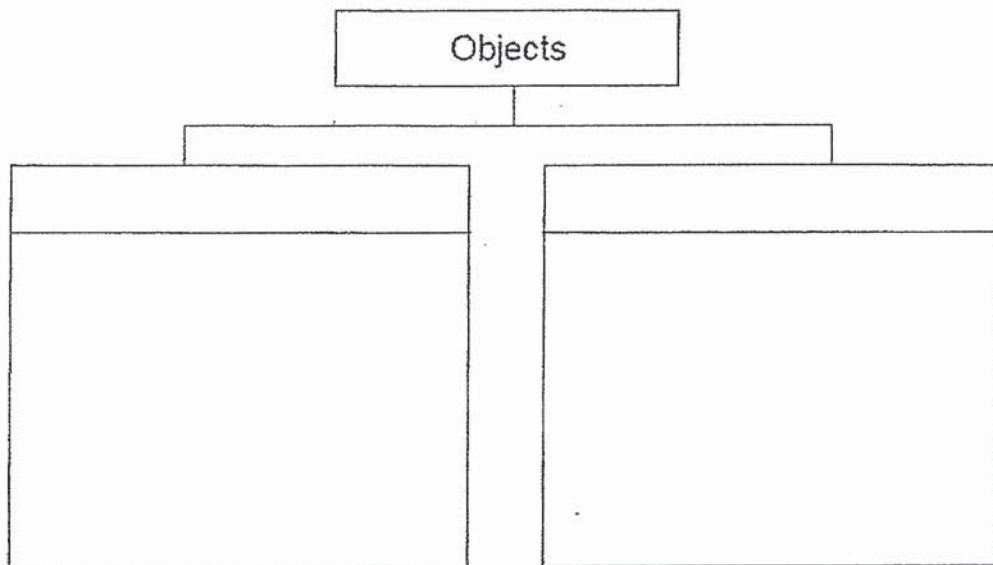
b) Which of the materials A, B, C or D is most suitable for making a raincoat? (1m)

21. Emily has 4 objects shown in the box below.

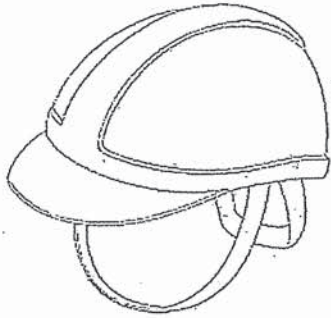
Metal ruler	Eraser	Ping pong ball	Cork
-------------	--------	----------------	------

After putting the objects in a pail of water, Emily classified them into two groups.

Complete the table below and give the two groups suitable headings. (3m)



22. Look at the objects below.



safety helmet



bath towel

The table below shows properties of 4 objects, E, F, G and H.

Property	Object			
	E	F	G	H
Strong	✓	✓	✓	
Flexible		✓	✓	✓
Waterproof	✓		✓	✓

Which objects, E, F, G or H, describe the safety helmet and bath towel?

i) Safety Helmet : Object _____

ii) Bath Towel : Object _____

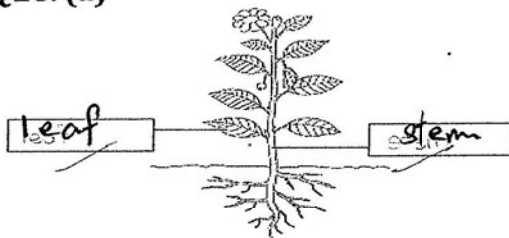
ANSWER KEY

YEAR : 2019
 LEVEL : PRIMARY 3
 SCHOOL : SINGAPORE CHINESE GIRLS' SCHOOL (PRIMARY)
 SUBJECT : SCIENCE
 TERM : SEMESTRAL ASSESSMENT 1

Q1	Q2	Q3	Q4	Q5	Q6	Q7	Q8	Q9	Q10
4	1	4	3	2	1	1	3	3	2
Q11	Q12	Q13	Q14	Q15					
1	4	2	1	4					

- Q16. (a) Both animal P and animal B reproduce by laying eggs.
 (b) Animal S lays eggs, has an outer covering of hair and cannot fly.
 (c) Animal B
- Q17. (a) Living things can respond to changes around them.
 (b) reptile
 (c) A fish breathes through gills while the lizard breathes through lungs.

Q18. (a)



seeds

(b) spores

Q19. (a) Bacteria

(b) In the refrigerator, there is not warmth. Bacteria needs warmth to grow. Hence, fresh milk should be kept in the refrigerator.

Q20. (i) A

(ii) D

(iii) C

(iv) B

(b) Material A

Q21.

Float on water cork ping pong ball	Sink in water metal Ruler eraser
--	--

Q22. (i) E

(ii) F

1
3/1/19