



Rosyth School
End-Of-Year Examination 2019
SCIENCE
Primary 3

Name: _____

Class: Primary 3 _____

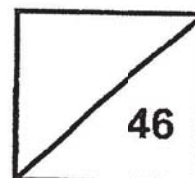
Register No. _____

Date: 30 October 2019

Total time for Booklets A and B: 1 h 30 min

Parent's Signature:

Total
Marks:



BOOKLET A

Instructions to Pupils:

1. Do not open the booklets until you are told to do so.
2. Follow all instructions carefully.
3. Answer all questions.
4. This paper consists of 2 booklets, Booklet A and Booklet B.
5. For questions 1 to 23 in Booklet A, shade the correct ovals on the Optical Answer Sheet (OAS) provided using a 2B pencil.

* This booklet consists of **14** printed pages (including cover page).

This paper is not to be reproduced in part or whole without the permission of the Principal.

For each question from 1 to 23, four options are given. One of them is the correct answer. Make your choice (1, 2, 3 or 4). **Shade the correct oval (1, 2, 3 or 4) on the Optical Answer Sheet.** (46 marks)

1. Which one of the following is a characteristic of mammals?

- (1) They lay eggs.
- (2) They have four legs.
- (3) They have hair on their body.
- (4) Their body is made up of three parts.

2. The table below shows the height of two things, P and Q, over two years respectively.

Thing	Height (cm)	
	Year 1	Year 2
P	120	120
Q	100	120

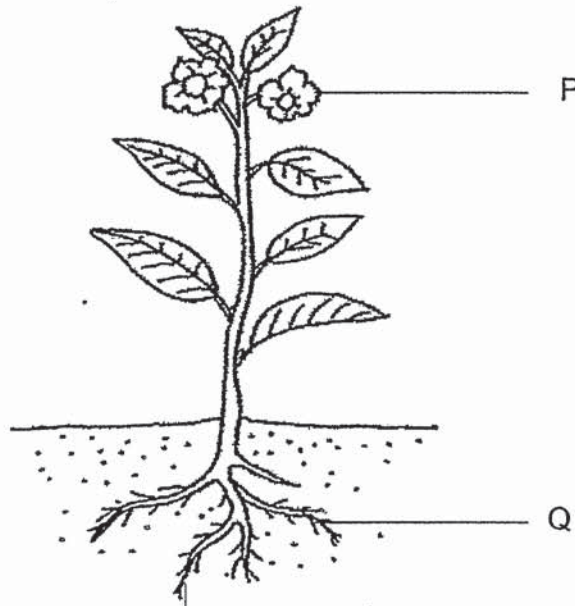
Based on the results, which one of the following statements is definitely correct?

- (1) P is a living thing.
 - (2) Q is a living thing.
 - (3) Both P and Q are living things.
 - (4) Both P and Q are non-living things.
3. Karen studied three animals. She tried to identify which of the animals are amphibians.

Which one of the following questions will help to confirm that the animals are amphibians?

- (1) How many legs do they have?
- (2) Do they reproduce by laying eggs?
- (3) Can they live on land and in water?
- (4) Do they breathe through their lungs?

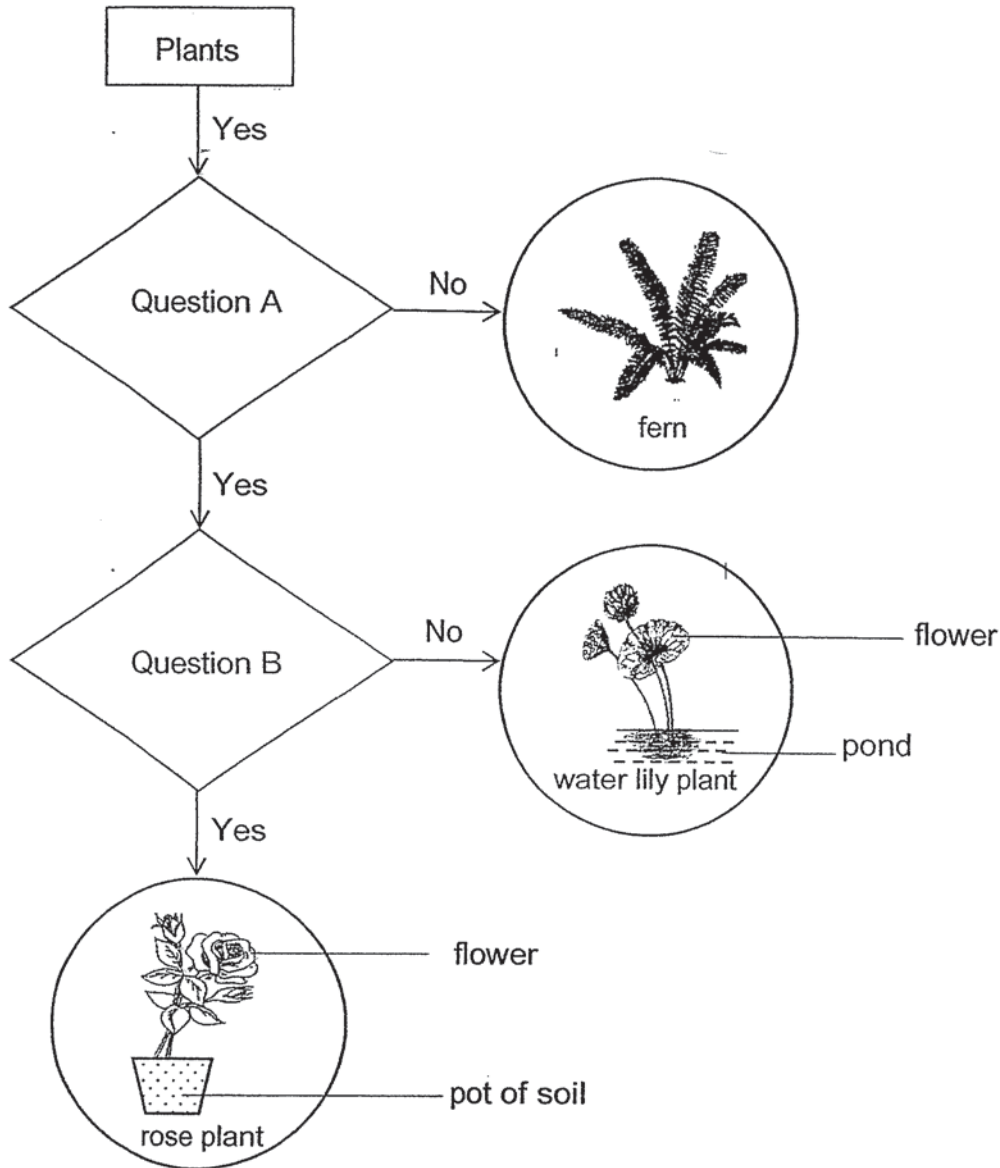
4. The diagram below shows a plant found in the garden.



Which one of the following represents parts, P and Q?

	P	Q
(1)	leaf	stem
(2)	flower	root
(3)	leaf	fruit
(4)	flower	stem

5. Study the classification diagram.



What are the two questions, A and B?

	Question A	Question B
(1)	Does it reproduce by spores?	Does it grow in water?
(2)	Does it reproduce by seeds?	Does it grow on land?
(3)	Does it bear flowers?	Does it reproduce by spores?
(4)	Does it bear fruits?	Does it reproduce by seeds?

6. Max wrote the following characteristics of living thing X on his Science worksheet.

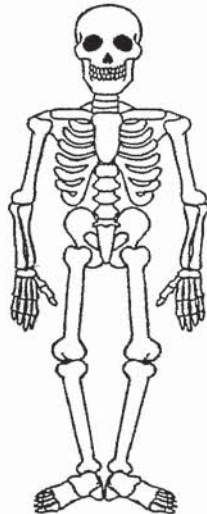
living thing X

- Does not make its own food
- Feeds on living and dead things
- Can only be seen using a microscope

Which one of the following could living thing X be?

- (1) fish
- (2) fern
- (3) bacteria
- (4) mushroom

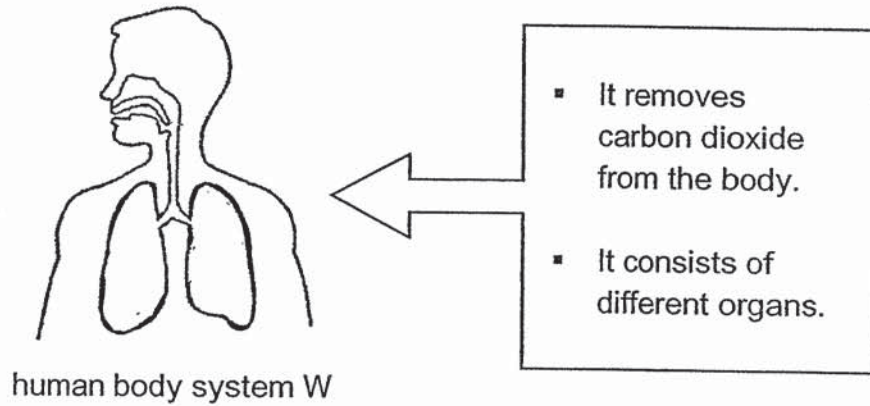
7. Study the human body system below.



The function of the human body system is to _____.

- (1) remove carbon dioxide from the body
- (2) protect the delicate organs in the body
- (3) break down food into simple substances
- (4) carry waste materials away from the different parts of the body

8. Tom saw a picture of human body system W as shown below. He read the information about the body system W carefully and noticed that one information was missing.



Which one of the following information was missing about human body system W?

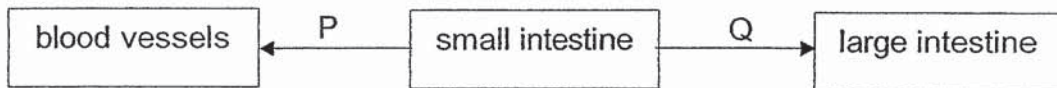
- (1) It supports the body.
 - (2) It takes in oxygen into the body.
 - (3) It breaks down food into simple substance.
 - (4) It carries food and water to all parts of the body.
9. In which one of the following organs is digestion completed in the human body?
- (1) mouth
 - (2) stomach
 - (3) small intestine
 - (4) large intestine

10. The table below shows the changes in the amount of digested food when it leaves organs, X, Y and Z, in the human digestive system. The organs are in the correct order as in human digestive system.

Organ	X	Y	Z
Change in the amount of digested food	No change	Decrease	Decrease

Which organ of the digestive system is X?

- (1) gullet
 (2) mouth
 (3) stomach
 (4) large intestine
11. Study the diagram below. P and Q represent the substances that leave the small intestine to the different parts of the body.



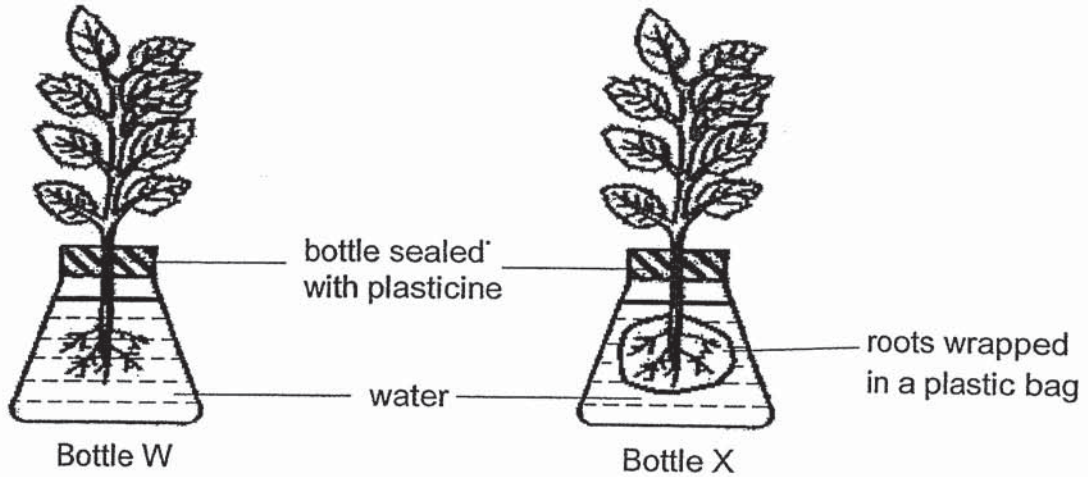
Which one of the following represents P and Q?

	P	Q
(1)	undigested food	water
(2)	water	digested food
(3)	digested food	water
(4)	digested food	undigested food

12. Which part of a plant helps to hold the plant firmly to the ground?

- (1) root
 (2) leaf
 (3) stem
 (4) flower

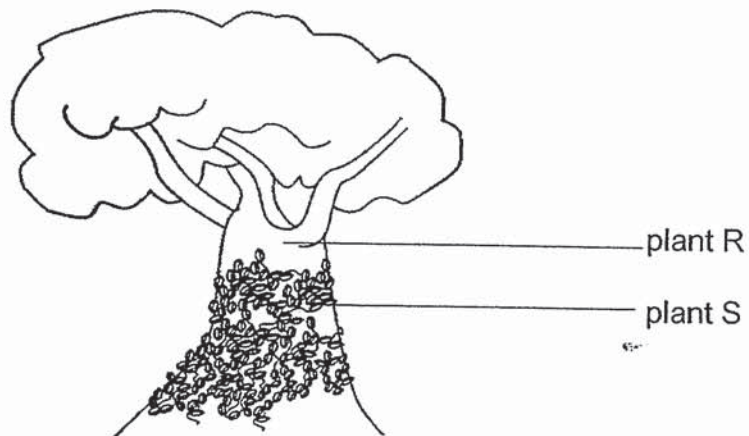
13. Sarah carried out an experiment on two similar plants as shown below. She observed the water level in both bottles daily.



Which one of the following shows the water level of the two bottles after a week?

	Bottle W	Bottle X
(1)	decreased	remained the same
(2)	increased	decreased
(3)	decreased	decreased
(4)	remained the same	remained the same

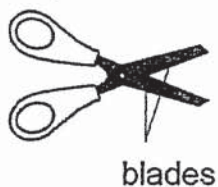
14. The diagram below shows plant S growing on the trunk of plant R.



Which one of the following statements is true?

- (1) Both plants make food.
- (2) Plant S reproduces by spores.
- (3) Plant S depends on plant R for air.
- (4) Plant S depends on plant R for food and support.

15. The picture below shows a pair of scissors.



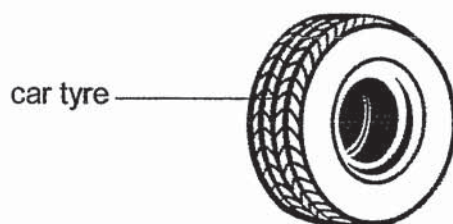
Which one of the materials is most suitable to make the blades of the scissors?

- (1) glass
- (2) wood
- (3) fabric
- (4) metal

16. The following table shows the characteristics of four different materials.

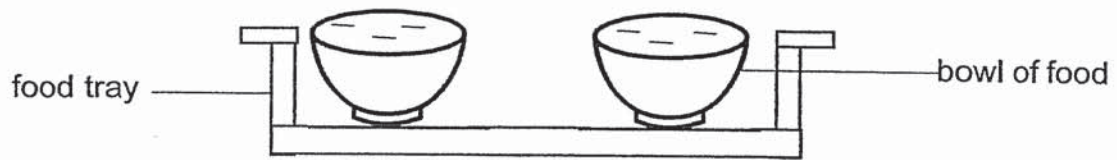
Material	Waterproof	Flexible	Breaks easily when dropped
A		✓	
B	✓	✓	✓
C			✓
D	✓	✓	

Which material is the most suitable to make a car tyre as shown in the picture below?



- (1) A
- (2) B
- (3) C
- (4) D

17. Study the diagram below.



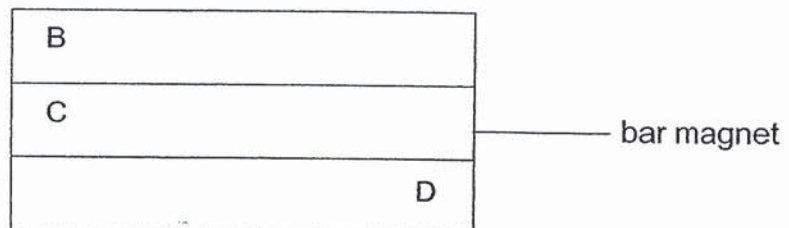
The food tray must be _____.

- (1) strong and flexible
- (2) strong and not flexible
- (3) flexible and not strong
- (4) not strong and not flexible

18. Which one of the following is a magnetic material?

- (1) gold
- (2) steel
- (3) wood
- (4) copper

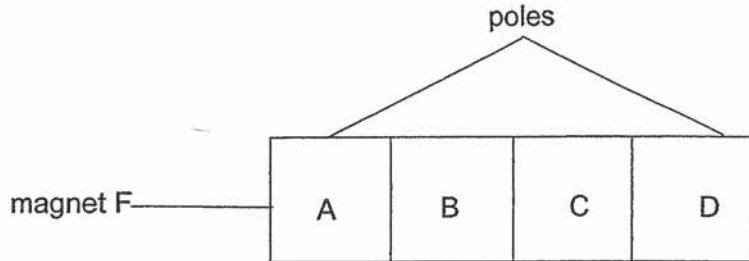
19. Study the three identical bar magnets as shown below. They are attracted to one another.



B is the North pole of one of the magnets. What are the poles represented by C and D?

	C	D
(1)	south pole	south pole
(2)	north pole	south pole
(3)	south pole	north pole
(4)	north pole	north pole

20. The diagram below shows magnet F divided into four parts, A, B, C and D. A and D are the poles of magnet F.



Which one of the following tables is likely to show the number of paper clips attracted by each part correctly?

(1)

Part of magnet	A	B	C	D
Number of paper clips attracted	13	7	14	10

(2)

Part of magnet	A	B	C	D
Number of paper clips attracted	12	3	4	14

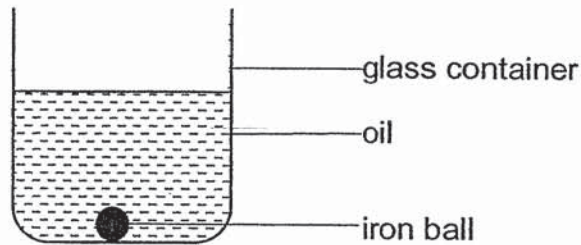
(3)

Part of magnet	A	B	C	D
Number of paper clips attracted	6	3	12	16

(4)

Part of magnet	A	B	C	D
Number of paper clips attracted	15	7	14	8

21. Mary wants to remove an iron ball from a glass container of oil as shown below. She knows that magnetism can pass through the glass container and oil.

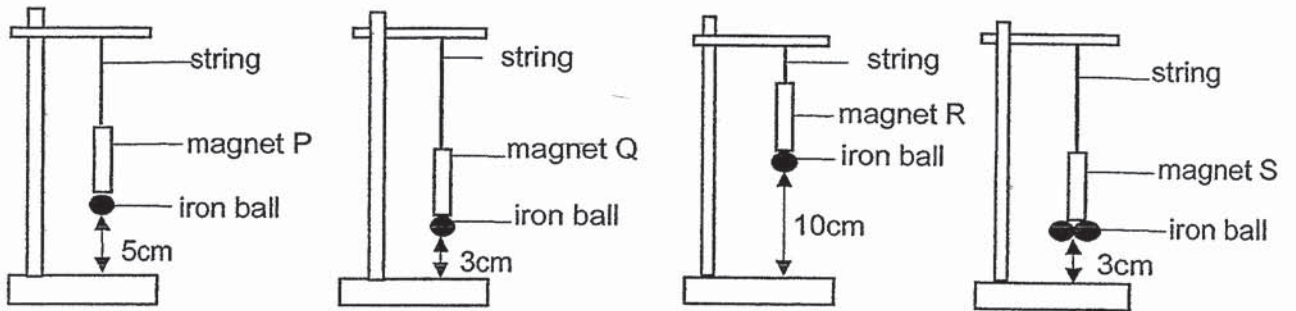


Order of steps	Statement
A	Remove the iron ball from the side of the glass container.
B	Place the magnet on the glass container near the iron ball.
C	Move the magnet to the top of the container when the iron ball is attracted to the magnet.

Which one of the following is the correct order of steps to remove the iron ball from the glass container?

- (1) B, C, A
- (2) B, A, C
- (3) C, A, B
- (4) C, B, A

22. Peter wanted to compare the magnetic strength of four magnets P, Q, R and S. He set up the experiment below and observed the number of iron ball and the distance at which the iron ball(s) were attracted by each magnet.

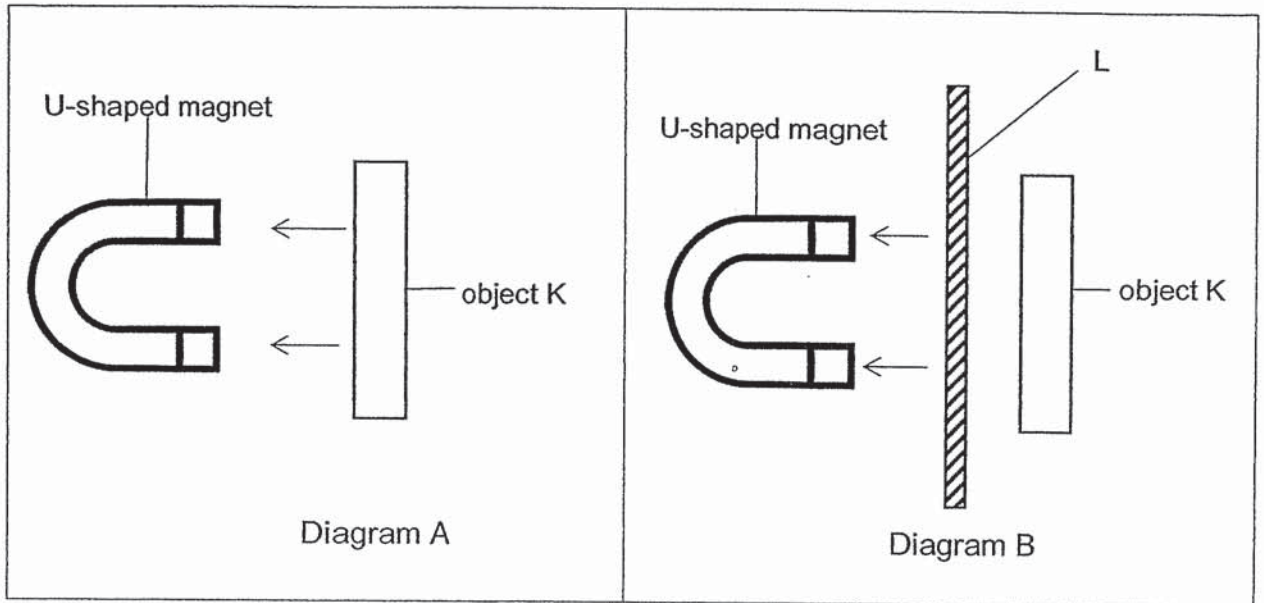


From the result of his experiment, which one of the magnets has the weakest magnetic strength?

- (1) P
- (2) Q
- (3) R
- (4) S

23. Jason made some observations when he put object K near a U-shaped magnet. When he first did this, object K was pulled towards the U-shaped magnet as shown in Diagram A.

When Jason placed a sheet of L between object K and the U-shaped magnet, object K remained at rest as shown in Diagram B. The sheet of L was pulled towards the U-shaped magnet.



Based on Jason's observations, which one of following most correctly states the property of object K and the sheet of L?

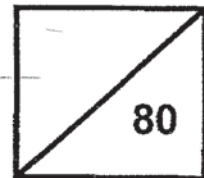
	Object K	Sheet of L
(1)	magnetic	non-magnetic
(2)	non-magnetic	magnetic
(3)	magnetic	magnetic
(4)	non-magnetic	non-magnetic

(Go on to Booklet B)



Rosyth School
End-Of-Year Examination 2019
SCIENCE
Primary 3

Total
Marks:



Name: _____

Class: Primary 3 _____

Register No. _____

Date: 30 October 2019

Total time for Booklets A and B: 1 h 30 min

Parent's Signature: _____

BOOKLET B

Instructions to Pupils:

1. For questions 24 to 34 give your answers in the spaces given in this booklet.

	Maximum	Marks Obtained
Booklet A	46 marks	
Booklet B	34 marks	
Total	80 marks	

* This booklet consists of **10** printed pages (including cover page).

This paper is not to be reproduced in part or whole without the permission of the Principal.

For questions 24 to 34, write your answers in this booklet.

(34 marks)

24. Kayla classified some things into container A and B respectively. Then she placed some food and water in both containers.

After a week, Kayla recorded her observations in the table below.

Container A	Container B
▪ Grew bigger in size	▪ Did not grow at all
▪ Not much food and water left	▪ Food and water remained the same

- (a) What are the suitable headings for container A and B? Fill in the blanks using the words, "**Living Things**" and "**Non-living Things**".

[1]

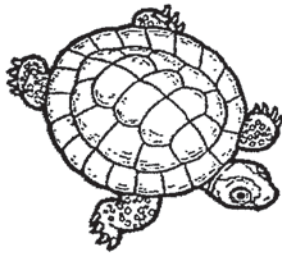
Container A: _____

Container B: _____

- (b) Kayla found a thing in the garden. The thing moved away when she touched it. In which container, A or B, should she put the thing? Explain why.

[2]

25. Study the two animals, P and Q, shown below.



animal P



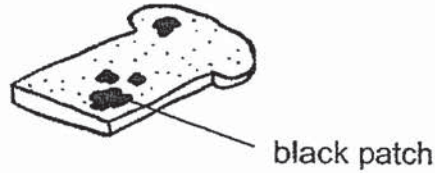
animal Q

- (a) State one similarity between animal P and Q based on their reproduction. [1]

- (b) Based on the pictures above, state one difference between animal P and Q. (Do not compare their size and shape.) [1]

- (c) Which animal group does animal Q belong to? [1]

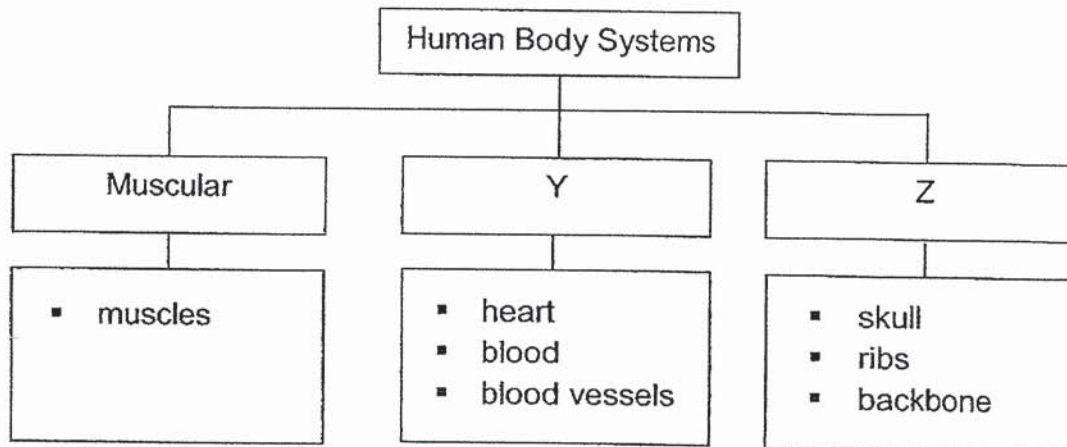
26. A slice of bread was placed on a table for two weeks. Some black patches were grown on the bread as shown below.



Read the following statements and put a tick (✓) next to each statement to show if it is true or false about the black patches on the bread. [2]

	Statement	True	False
(a)	They are mould.		
(b)	They reproduce by seeds.		
(c)	They feed on the bread.		
(d)	They make their own food.		

27. Study the classification chart below.

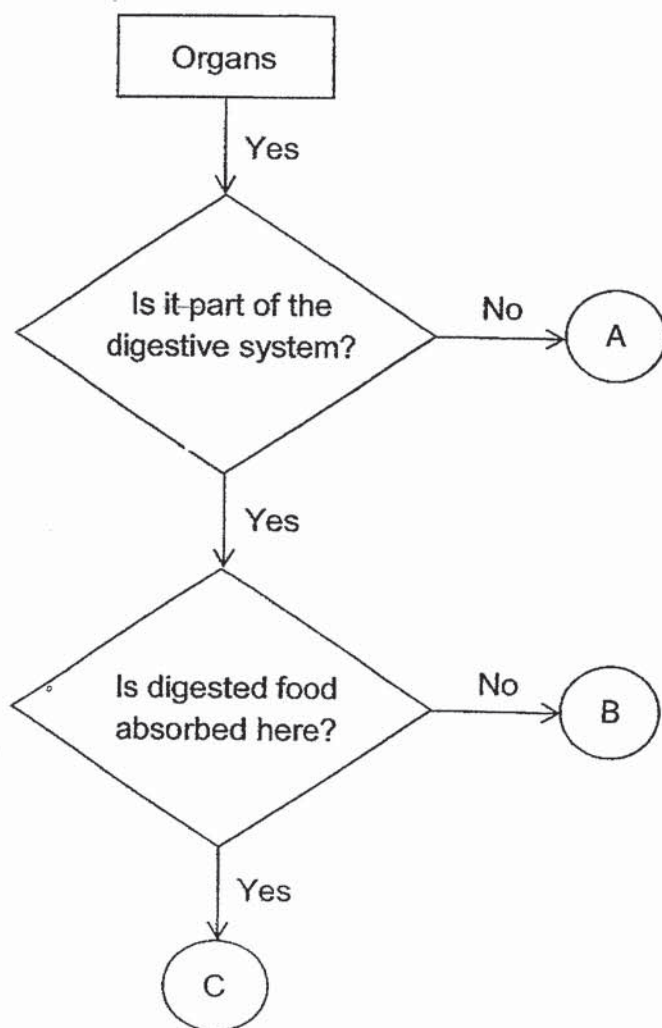


Write down the suitable headings for Y and Z.

Y: _____

Z: _____

28. Study the flowchart below carefully.



(a) Using the information in the flowchart, identify the organs by writing the letters, A, B or C in the correct boxes below. You can use the letter more than once.

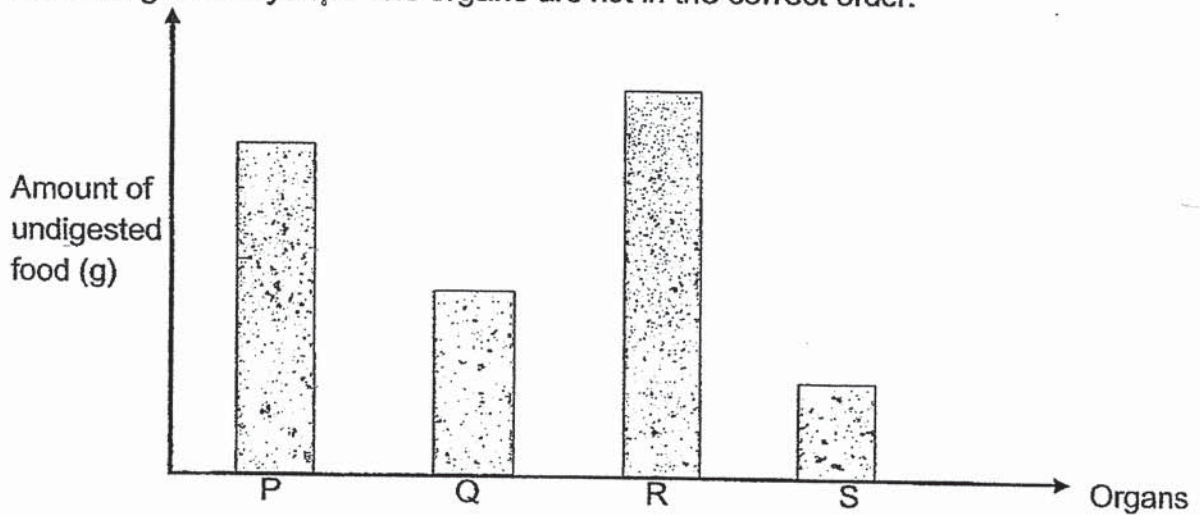
[2]

Organ	Part
lungs	
small intestine	
large intestine	
heart	

(b) Using the information in the flowchart, state one similarity between Part B and Part C.

[1]

29. David took his lunch. The food passed through the organs in his digestive system. The graph below shows the amount of undigested food as it enters the organs P, Q, R and S of the digestive system. The organs are not in the correct order.



- (a) Which organ, P, Q, R or S of the digestive system is the mouth? Support your answer.

[2]

- (b) Compare the amount of undigested food in Organ Q and Organ R.

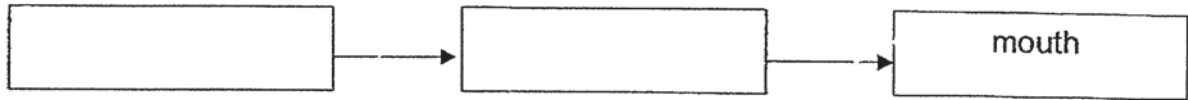
[1]

- (c) No digested food is found in Organ S after digestion is completed in Organ Q. Which part of the digestive system is Organ S?

[1]

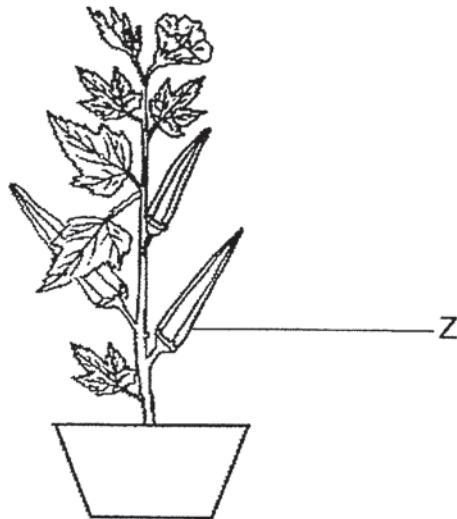
30. Leslie was not feeling well and vomited after lunch.

- (a) Identify the organs in the digestive system that the vomit had travelled before being thrown out of the mouth. [2]



- (b) What does the mouth produce to help in the digestion of the food? [1]

31. The diagram below shows a plant.

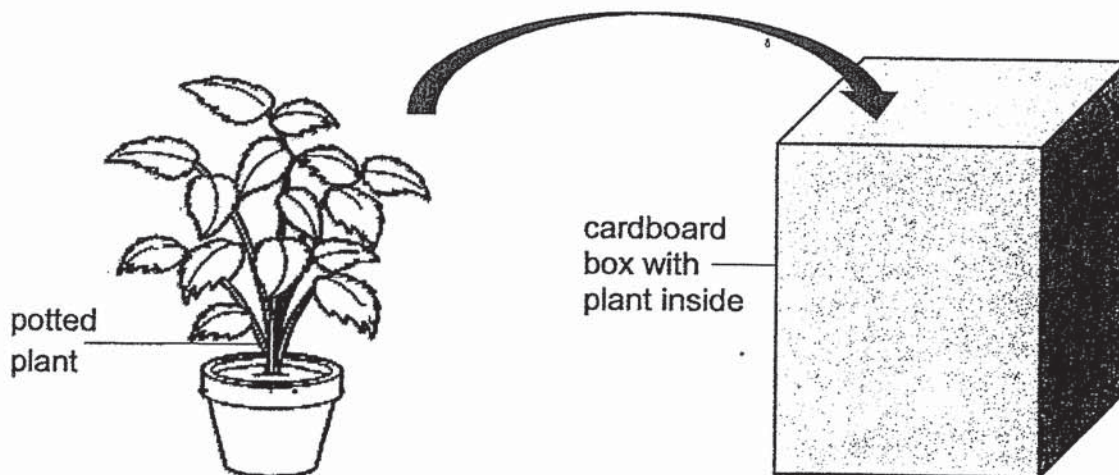


- (a) Which part of the plant is Z? [1]

- (b) Y is found inside Z. Y is protected by Z. Which part of the plant is Y? [1]

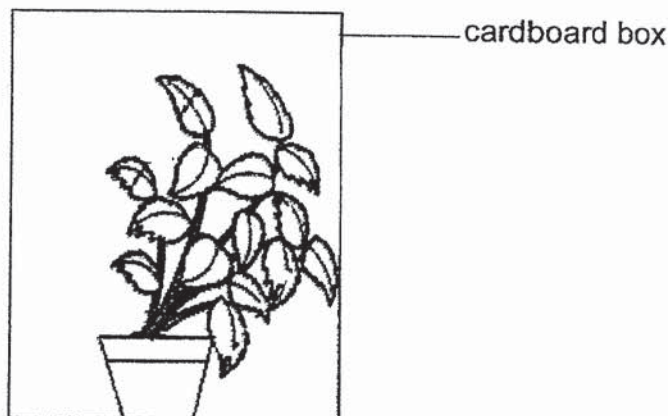
- (c) What is the function of Y? [1]

32. Terry took a healthy potted plant, watered it and left it in a sealed cardboard box as shown below.



Terry then poked a hole in the cardboard box. After a few days, he observed that the plant grew towards one side.

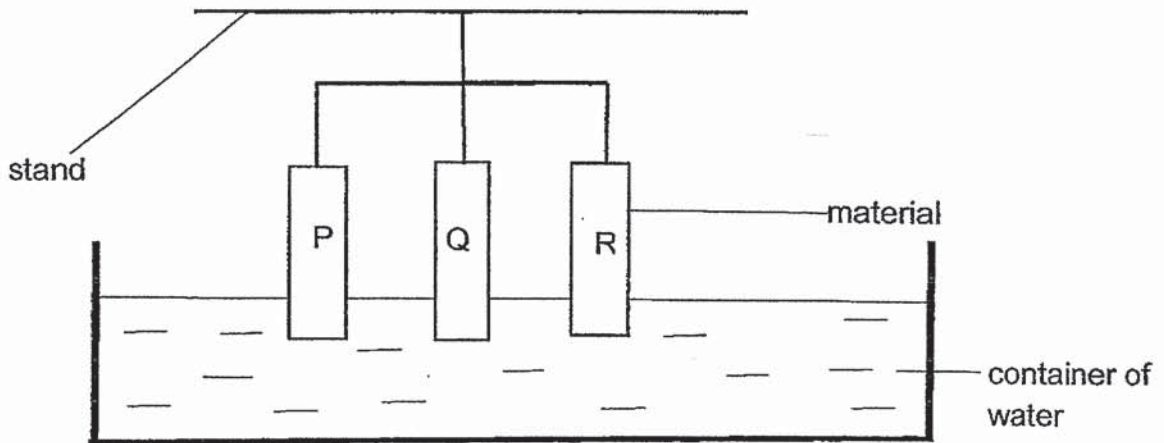
- (a) On the diagram below, draw a 'X' on the cardboard box to show the position of the hole made by Terry. [1]



- (b) Why did the plant grow to one side? [2]

- (c) Terry put another healthy plant, watered it and left it in the same cardboard box but this time, he covered the hole with a piece of clear glass. Would his observation be the same? Give a reason for your answer. [1]

33. Su Lin conducted an experiment to find out the amount of water that could be absorbed by three different materials P, Q and R. Each piece of material had a mass of 10 grams. She dipped each piece of material in the container of water as shown below.



She measured the mass of each piece of material after dipping it into the container of water for one minute. She then recorded the final mass of each material as shown in the table below.

Material	Final mass(g)
P	12
Q	14
R	10

- (a) Arrange the materials P, Q and R from the least absorbent to the most absorbent.

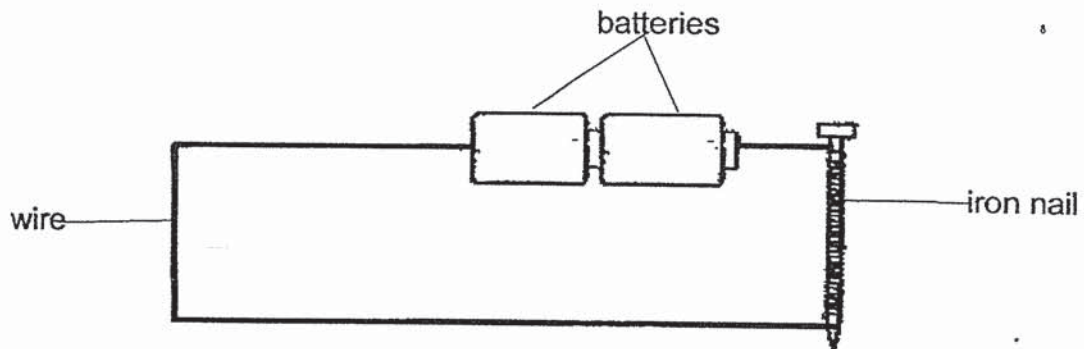
[1]

Least absorbent \longrightarrow Most absorbent

- (b) Which material, P or Q, is more suitable to make a bath towel? Explain why.

[2]

34. Samy made an electromagnet shown below using three different iron nails, W, X and Y.



He placed the iron nails in a box filled with paper clips. He wanted to test the strength of the magnetised iron nails. The results are shown in the table below.

Iron nail	Number of coils of wire around the nail	Number of paper clips attracted
W	3	1
X	10	5
Y	10	11

- (a) Which iron nail, W, X or Y, is the strongest electromagnet? Give a reason for your answer. [1]

- (b) Without changing the number of coils of wire around the nail, state the change Samy can make to increase the strength of the electromagnet. [1]

- (c) When Samy brought Object A close to iron nail X, he observed that iron nail X moved away from Object A.

Based on the above observation, put a tick in the box below to indicate whether his statements were 'true', 'false' or 'not possible to tell'. [2]

Statement	True	False	Not possible to tell
Object A is a magnet.			
Object A is a made of steel.			

End of Paper

ANSWER KEY

YEAR : 2019
LEVEL : PRIMARY 3
SCHOOL : ROSYTH SCHOOL
SUBJECT : SCIENCE
TERM : EOY

SECTION A

Q1	3	Q2	2	Q3	3	Q4	2	Q5	2
Q6	3	Q7	2	Q8	2	Q9	3	Q10	1
Q11	4	Q12	1	Q13	1	Q14	1	Q15	4
Q16	4	Q17	2	Q18	2	Q19	1	Q20	2
Q21	1	Q22	2	Q23	3				

SECTION B

Q24 (a) Container A : Living Things

Container B : Non-Living Thing

(b) A as A contains living things and ^{the} thing that she ^{touches} was a living thing as it responds to changes like ^{all} living things.

Q25 (a) They both lay eggs.

(b) Q has feathers but P has a hard shell.

(c) Birds

Q26 (a) True

(b) False

(c) True

(d) False

Q27 Y : Circulatory

Z : ^{Skeletal}

Q28 (a)

Organ	Part
lungs	A
Small intestine	C
Large intestine	B
heart	A

(b) They both parts of the digestive system.

Q29 (a) R as it has the most amount of undigested food as digesting starts in the mouth.

(b) R has more undigested food than Q.

(c) Large intestine

Q30 (a) stomach → gullet → mouth

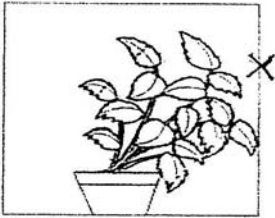
(b) It produces saliva to moist the food so it is easier to digest.

Q31 (a) Fruit

(b) Seed.

(c) To grow into a new plant.

Q32



(b) - It grew on one side as that side had more sunlight so it grew to that side to get more sunlight to make food.

(c) - No as the plant will run out of air as there were no openings to let air in.
- Yes. Glass is transparent.

Q33 (a) R P Q

(b) Q as it is the most absorbent of the three and a towel must be very absorbent to absorb the water on the human's body.

Q34 (a) Y as it attracted the most number of paper clips.

(b) Add more batteries

(c)

True	False	Not possible to tell
✓		
		✓

KIASU
ExamPaper
Islandwide Delivery | Whatsapp Only 88660031

0 2
2WD

