



MAHA BODHI SCHOOL
2018 SEMESTRAL ASSESSMENT 1
PRIMARY THREE SCIENCE
(BOOKLET A)

Name : _____ ()

Class : Primary 3 _____

Date : 8 May 2018

Total Duration for Booklets A and B: 1 h 15 min

INSTRUCTIONS TO CANDIDATES:

1. Do not turn over this page until you are told to do so.
2. Follow all instructions carefully.
3. Answer all questions.
4. Shade your answers in the Optical Mark Sheet (OMS) provided.

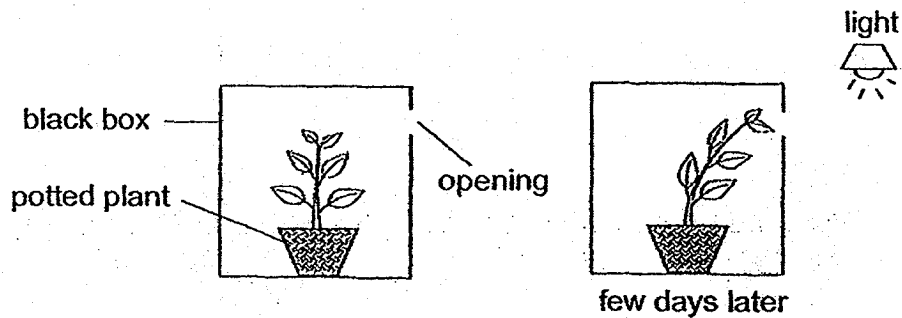
This booklet consists of 7 printed pages.

BLANK PAGE

BOOKLET A : [15 x 2 marks = 30 marks]

For each question from 1 to 15, four options are given. One of them is the correct answer. Make your choice (1, 2, 3 or 4). Shade your answer on the Optical Answer Sheet.

1. Study the diagram below.

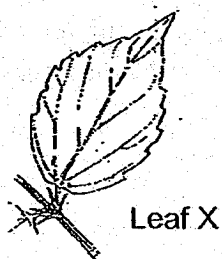


Based on the diagram, what characteristic does the living thing show?

- (1) It can reproduce.
 - (2) It responds to changes.
 - (3) It needs air, food and water to survive.
 - (4) It can move from place to place on its own.
2. Which of the following correctly shows the difference between flowering and non-flowering plants?

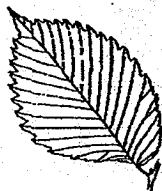
	Flowering plants	Non-flowering plants
(1)	Need sunlight to make food	Do not need sunlight to make food
(2)	Can make their own food	Cannot make their own food
(3)	Can produce flowers	Cannot produce flowers
(4)	Cannot produce fruit	Can produce fruit

3. Study the diagram of Leaf X shown below.



Which one of the following leaves is different from Leaf X?

(1)



(2)



(3)



(4)



4. An insect has a _____ outer covering.

- (1) soft
- (2) hard
- (3) hairy
- (4) scaly

5. Which of the following statements are true about mammals?

- A. They have three body parts.
- B. They give birth to young alive.
- C. They have hair on their bodies.
- D. They produce milk for their young.

- (1) A and D only
- (2) B and C only
- (3) A, B and D only
- (4) B, C and D only

6. Study the diagram below.



Which of the following statements is correct about the living things shown above?

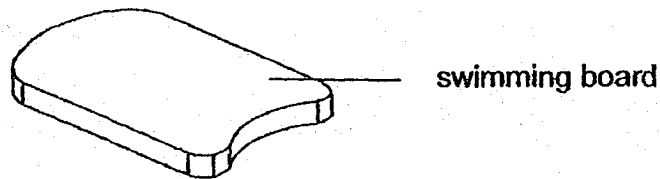
- (1) They are all harmful to us.
- (2) They can make their own food.
- (3) They grow in places where it is dry.
- (4) They reproduce by producing spores.

7. Which of the following property of a spectacle lens would be useful for the user?



- (1) flexible
- (2) transparent
- (3) absorb water
- (4) ability to float

8. Jamie wants to buy a swimming board as shown below for his swimming lesson.



What would be the suitable properties for the swimming board?

- A. strong
- B. waterproof
- C. transparent
- D. ability to float

- (1) A and D only
- (2) C and D only
- (3) A, B and C only
- (4) A, B and D only

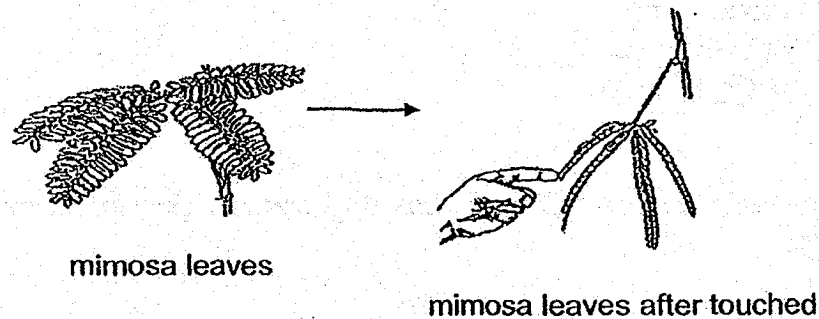
9. Study the table below.

Characteristics	Things			
	robot	sheep	butterfly	monkey
Grow	✓	✓	✓	✓
Three body parts	✓		✓	
Give birth to young	✓			✓
Respond to changes	✓	✓	✓	

Based on the table, which of the following things show the correct characteristics?

- (1) robot
- (2) sheep
- (3) butterfly
- (4) monkey

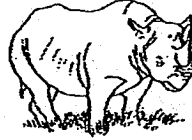
10. The diagram below shows a mimosa plant. When it is touched, the leaves close up.



Which characteristic of the mimosa leaves shows that it is a living thing?

- (1) It grows along the ground.
- (2) It moves from place to place.
- (3) It does not bear flowers or fruit.
- (4) It responds to the touch of the hand.

11. The diagrams below show a plant and an animal.



Ali, Betty, Carl and Kumar made the following comments about them.

- Ali : They are living things because they can reproduce.
Betty : They are not living things because they cannot grow bigger.
Carl : They are living things because they can move from place to place.
Kumar : They are not living things because they do not need food, water and air.

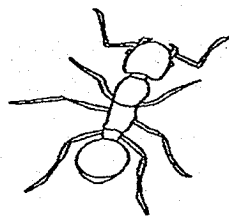
Whose statement is correct?

- (1) Ali
(2) Carl
(3) Betty
(4) Kumar

12. Melody recorded the characteristics of 4 animals Q, R, S and T in the table below.

Characteristics	Animal			
	Q	R	S	T
Does it have wings?	Yes	No	Yes	No
Does it have scales?	Yes	Yes	No	No
Does it feelers?	Yes	No	Yes	Yes

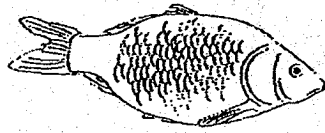
The diagram below shows one of the animals that he saw.



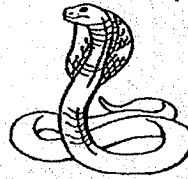
Which animal describes best the animal shown above?

- (1) Animal Q
(2) Animal R
(3) Animal S
(4) Animal T

13. Study the diagrams of Animals X and Y shown below.



Animal X



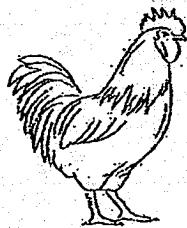
Animal Y

Which of the following statements about animals X and Y are true?

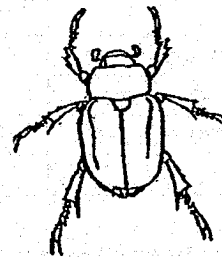
- A. Both animals have scales.
- B. Both animals reproduce by laying eggs.
- C. Animal X has gills and animal Y has moist skin.
- D. Animal X has 3 body parts and animal Y has one body part.

- (1) A and B only
- (2) B and C only
- (3) A, B and D only
- (4) A, B, C and D

14. Study the diagrams of Animal Y and Z shown below.



Animal Y

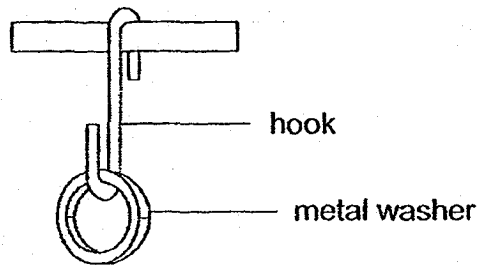


Animal Z

Which of the following is a common characteristic of Animal Y and Animal Z?

- (1) Both lay eggs.
- (2) Both have scales.
- (3) Both have moist skin.
- (4) Both live on land and water.

15. Cassandra wanted to test the strength of the three different hooks J, K and L. She set the experiment as shown below. She then hung the metal washer one at a time until the hook broke.



She recorded her results in the table below.

Hook	Number of metal washers needed to break the hook
J	5
K	10
L	7

From the results above, we can conclude that _____

- (1) Hook J is stronger than Hook K
- (2) Hook J is stronger than Hook L
- (3) Hook L is stronger than Hook K
- (4) Hook K is stronger than Hook L

END OF BOOKLET A

GO ON TO BOOKLET B



MAHA BODHI SCHOOL
2018 SEMESTRAL ASSESSMENT 1
PRIMARY THREE SCIENCE
(BOOKLET B)

Name: _____ ()

Class: Primary 3 _____

Date : 8 May 2018

Total Duration for Booklets A and B: 1 h 15 min

INSTRUCTIONS TO CANDIDATES:

1. Do not turn over this page until you are told to do so.
2. Follow all instructions carefully.
3. Answer all questions.
4. Write all your answer in this booklet.

Booklet	Marks Obtained	Max Marks
A		30
B		20
Total		50

Parent's signature: _____

This booklet consists of 7 printed pages.

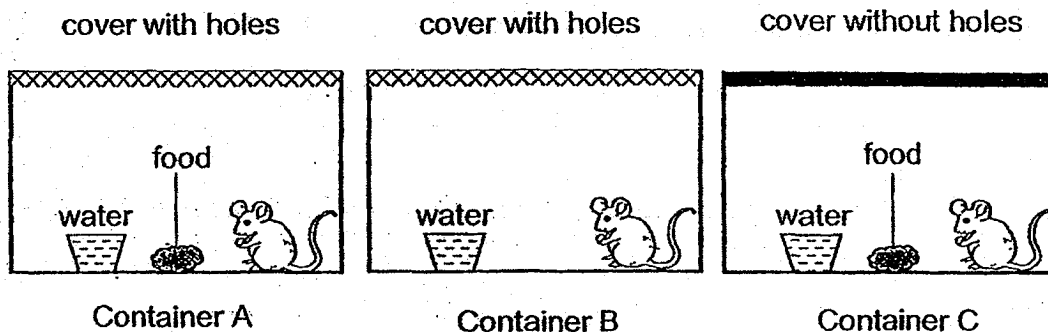
BLANK PAGE

BOOKLET B : [20 marks]

For questions 16 to 22, write your answers in this booklet.

The number of marks available is shown in the brackets [] at the end of each question or part-question.

16. The diagram below shows three similar animals kept in three different containers A, B and C.



- (a) (i) State one difference between containers A and C. [1]

- (ii) Give a reason to explain why the animal in container C died after two days. [1]

- (b) What would you do to ensure that the animals will still be alive in containers B and C for two weeks? [2]

Marks :

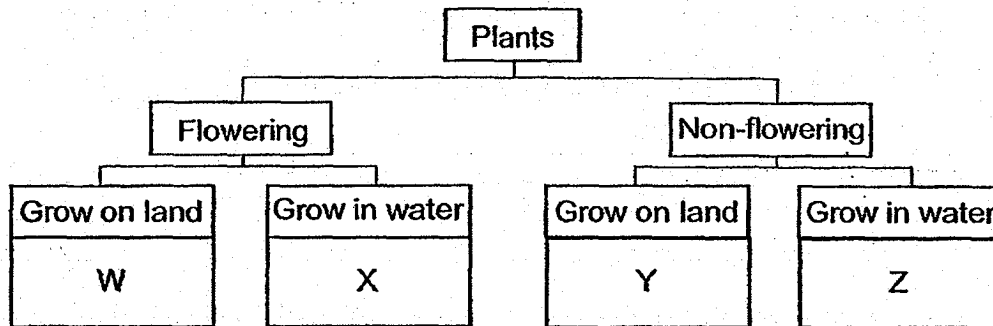
/ 4

17. The table below shows the characteristics of four plants A, B, C and D.

Characteristics	Plants			
	A	B	C	D
Has flowers	x	✓	✓	x
Grow in water	✓	x	✓	x

(a) Based on the information given above, describe Plant A. [1]

Study the classification chart below.

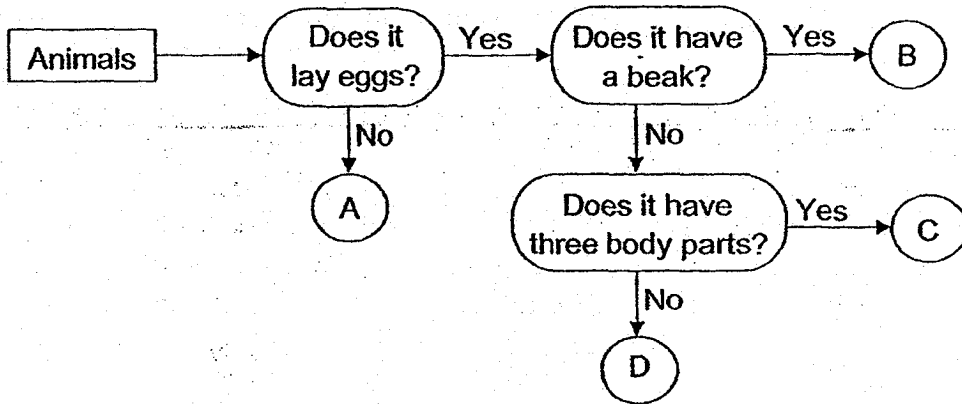
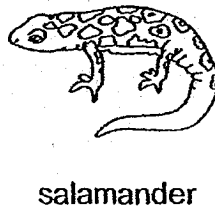


(b) Based on the information given in the classification diagram above, in which of the boxes W, X, Y or Z will you place Plant C? [1]

Plant C can be placed in box _____.

Marks : / 2

18. The letters A, B, C and D in the flowchart represent the animals shown below.



(a) Which animal does letters A, B, C and D in the flowchart represent? [2]

A : _____

C : _____

B : _____

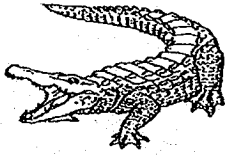
D : _____

(b) (i) Based on the flowchart, state the characteristics of Animal B. [1]

(ii) Alicia says that a bat is a bird as it has wings. Explain why Alicia is wrong. [1]

Marks : / 4

19. Study the animals below.



Animal P



Animal Q


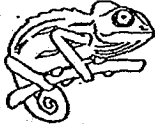






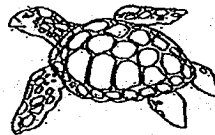
Animal R

(a) (i) Which animal group does Animal Q belong to? [1]

(ii) State a common characteristic between Animal P and R. [1]

(b) James classified some animals into three groups as shown below.

Group 1	Group 2	Group 3
		
penguin	chameleon	giraffe
		
flamingo	snake	lion



turtle

Which group would you put the turtle into? Explain your answer. [2]

Marks : / 4

20. The diagram below shows some mould and mushrooms.



(a) Which group of living things do mushrooms and mould belong to? [1]

Jason conducted an experiment to find out the conditions needed for bread mould to grow well.

The table below shows the conditions under which four bread slices W, X, Y and Z from the same loaf were kept.

Conditions	Bread slices			
	W	X	Y	Z
Dry	✓			✓
Dark	✓		✓	
Moist		✓	✓	
Bright		✓		✓

After one week, he observed that bread slice Y has the most mould growing on it. And bread slice Z has the least mould growing on it.

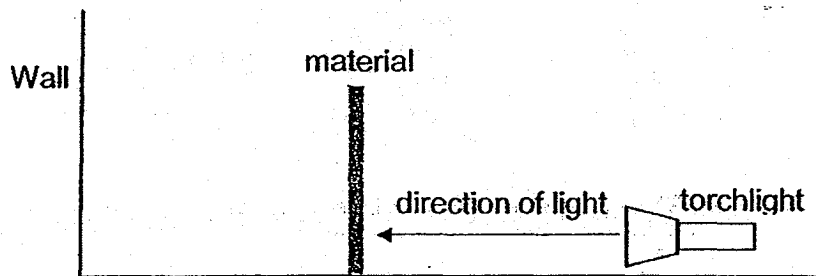
	Amount of mould on bread slice			
	Least \longrightarrow Most			
Bread slice	Z	W	X	Y

(b) What can Jason conclude about the conditions needed for bread mould to grow well? [1]

Marks :

12

21. Emma wants to investigate which material Q, R or S would be the most suitable material to make curtains for a baby's room to keep the room very dark. She set up the experiment as shown below.



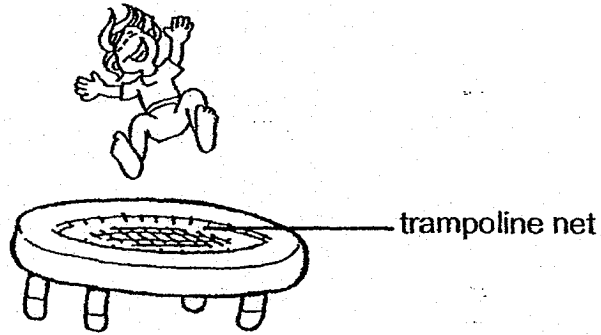
Material	Was there any light on the wall?
Q	No
R	Yes
S	Some

- (a) Which property of the material is she testing? [1]

- (b) Which material would be the best material to make the curtains for the baby's room? Explain your answer. [1]

Marks :

22. The diagram below shows Adam jumping on the trampoline.

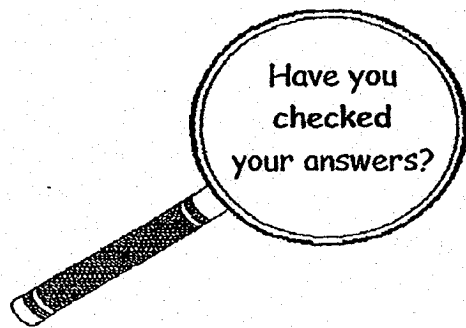


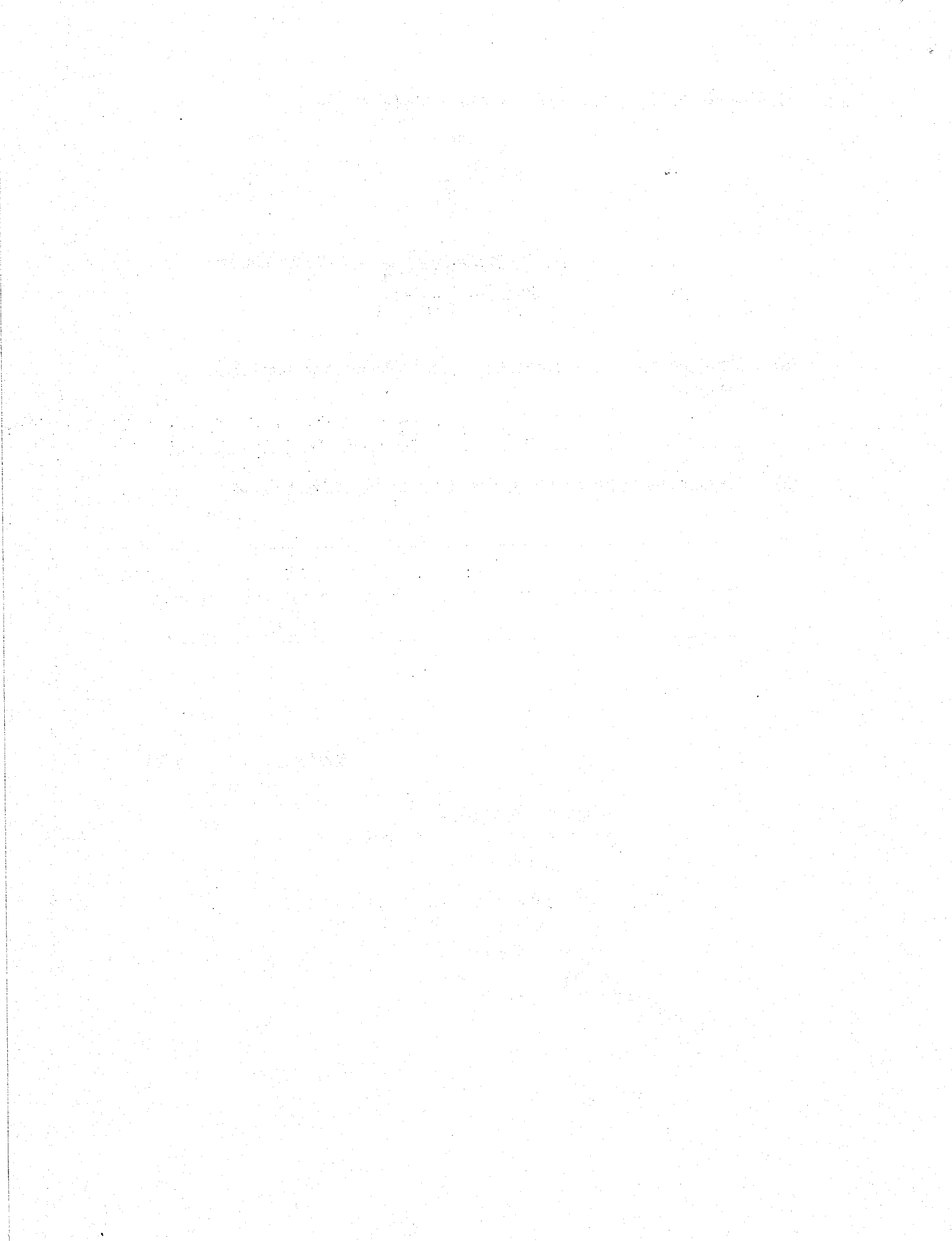
(a) What property of the trampoline net allows Adam to bounce when he jumps on it? [1]

(b) Explain why rubber should be used to make the trampoline net. [1]

Marks : / 2

~ END OF PAPER ~





EXAM PAPER 2018 (P3)

SCHOOL : MAHA BODHI

SUBJECT : SCIENCE

TERM : SA1

Q1	Q2	Q3	Q4	Q5	Q6	Q7	Q8	Q9	Q10
2	3	3	2	4	4	2	4	3	4
Q11	Q12	Q13	Q14	Q15					
1	4	1	1	4					

Q16) a) i) Container A allows air to pass through its cover but Container C does not.

ii) The living thing need air to survive and there is no air in Container C.

b) Put some food in Container B and change the cover of Container C into a cover with holes.

Q17) a) Plant A is a water plant and it is also a non-flowering plant.

b) Plant C can be placed in box X.

Q18) a) A : bat B : ostrich C : housefly D : salamander

b) i) Animal B lay eggs and have a beak.

ii) Not only birds have wings, a bat do not have feather as outer-covering, a bat have fur as outer-covering.

Q19) a) i) Amphibian

ii) Both animal P and R have scales.

b) Group 2, because turtle have scales like chameleon and snake.

Q20) a) Fungi

b) Bread mould need moist and dark to grow well.

Q21) a) Transparency.

b) Material Q, because it does not allow any light to pass through.

Q22) a) Flexibility

b) Rubber is flexible as it will bend easily.