



NAN HUA PRIMARY SCHOOL  
SEMESTRAL ASSESSMENT 1 – 2018  
PRIMARY 3

SCIENCE

BOOKLET A

24 Multiple Choice Questions (48 marks)

Total Time for Booklets A and B : 1 hour 30 minutes

INSTRUCTIONS TO CANDIDATES

1. Write your name and index number in the space provided.
2. Do not turn over the page until you are told to do so.
3. Follow all instructions carefully.
4. Answer all questions.
5. Shade your answers in the Optical Answer Sheet (OAS) provided.

Marks Obtained

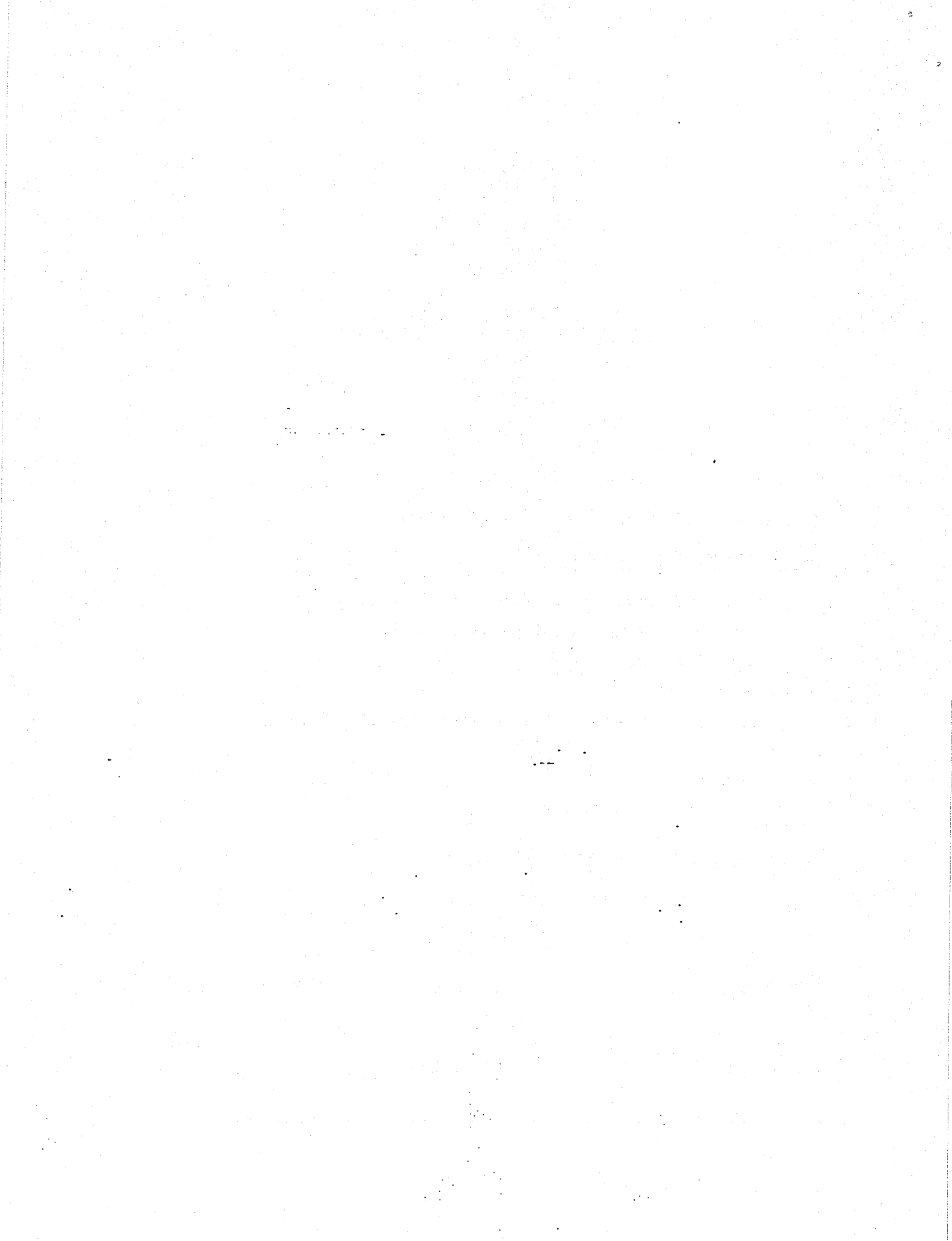
Booklet A		/48
Booklet B		/32
Total		/80

Name: \_\_\_\_\_ ( ) Class: P 3 \_\_\_\_\_

Date : 3 May 2018

Parent's signature: \_\_\_\_\_

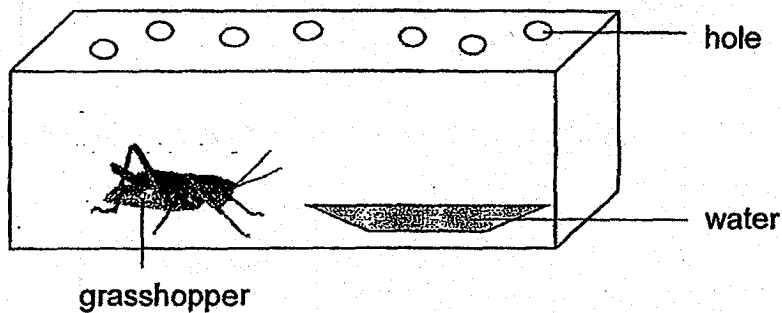
---



**Section A: (24 x 2 marks = 48 marks)**

For each question from 1 to 24, four options are given. One of them is the correct answer. Make your choice (1, 2, 3 or 4). Shade the correct oval (1, 2, 3 or 4) on the Optical Answer Sheet.

1. Jane placed a grasshopper and a dish of water in a glass container as shown below. She ensured that the grasshopper had the same amount of water every day.

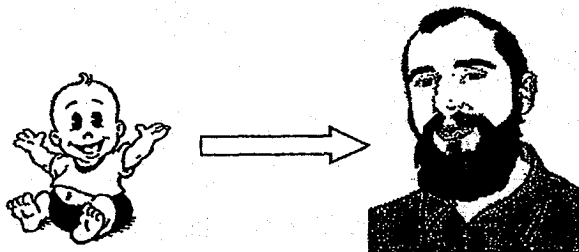


After a few days, she discovered that the grasshopper in the glass container died.

This shows that living things need \_\_\_\_\_ to survive.

- (1) air
- (2) food
- (3) water
- (4) sunlight

2. Sam was flipping through his father's photo album and he noticed the changes in his father from a baby to an adult.



What characteristic of living things does the above changes show?

- (1) Living things can grow.
- (2) Living things can move.
- (3) Living things can reproduce.
- (4) Living things can respond to changes.

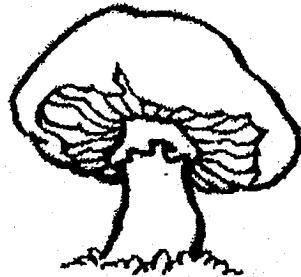
3. Study the table below carefully.

	A	B	C
Does it have feathers?	No	Yes	No
Does it have scales?	Yes	No	No
Does it have legs?	No	Yes	Yes

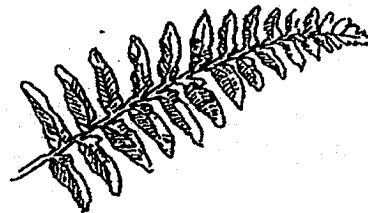
Which of the following correctly shows what A, B and C could be?

	A	B	C
(1)	Bird	Fish	Amphibian
(2)	Mammal	Fish	Bird
(3)	Fish	Bird	Amphibian
(4)	Amphibian	Mammal	Bird

4. Compare the two organisms below.



mushroom

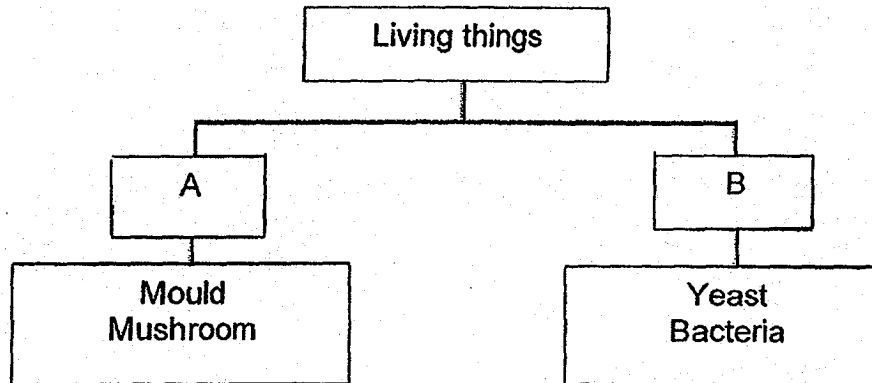


fern

Which one of the following statements about the mushroom and the fern is **incorrect**?

- (1) Both reproduce by spores.
- (2) Both do not produce flowers.
- (3) Both need sunlight to stay alive.
- (4) Both cannot move from place to place on their own.

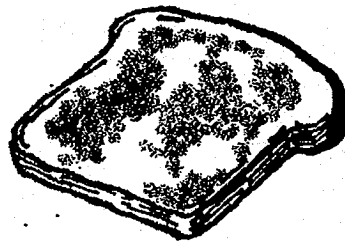
5. Study the classification chart below carefully.



Which of the following headings best represent A and B?

	A	B
(1)	Fungi	Plant
(2)	Useful to man	Harmful to man
(3)	Can be seen with naked eyes	Cannot be seen with naked eyes
(4)	Can make its own food	Cannot make its own food

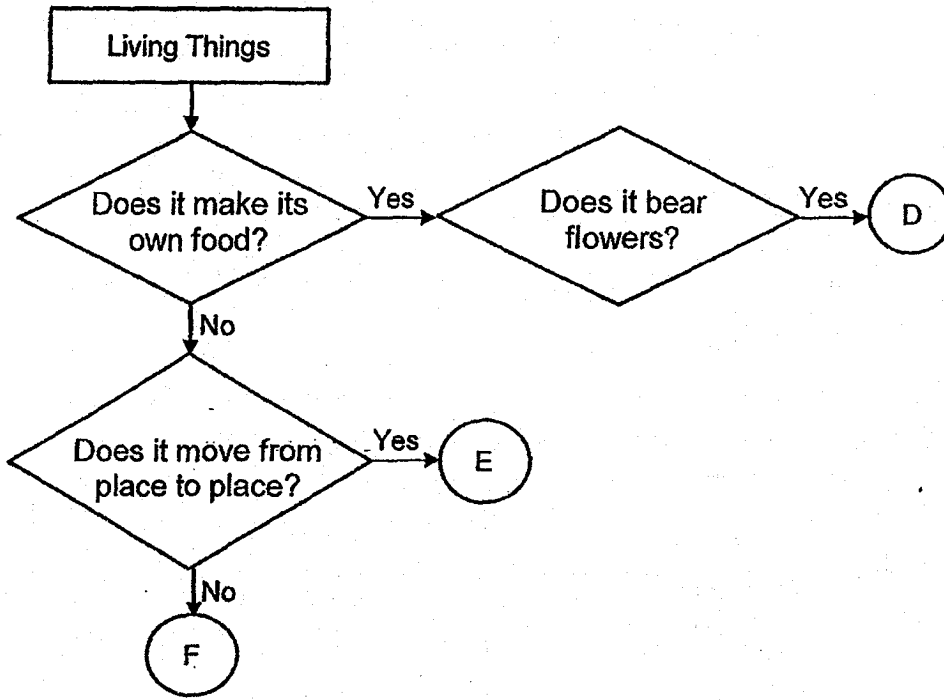
6. A piece of bread was left on the kitchen table. After a few days, tiny black spots were formed on the bread as shown in the diagram below.



Which group of living things do the tiny black spots belong to?

- (1) Plant
- (2) Fungi
- (3) Animal
- (4) Bacteria

7. The flow chart below shows the characteristics of living things D, E and F.

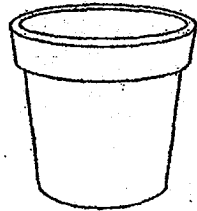


Which groups of living things do D, E and F represent?

	D	E	F
(1)	Flowering plants	Fungi	Bacteria
(2)	Flowering plants	Animals	Fungi
(3)	Non-flowering plants	Fungi	Bacteria
(4)	Non-flowering plants	Animals	Fungi

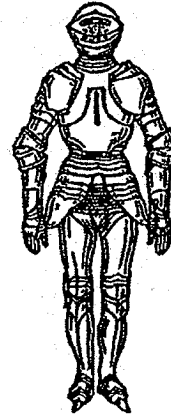
8. A glass bottle breaks easily when dropped. Which object below has a similar property as the glass bottle?

(1)



ceramic pot

(2)



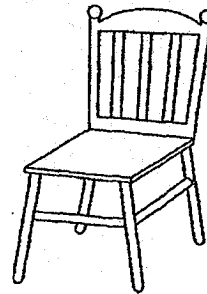
armour

(3)



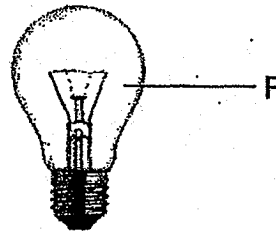
school bag

(4)



wooden chair

9. Study the pictures below:



Which one of the following materials is suitable for making parts E and F?

- (1) Wood
- (2) Glass
- (3) Metal
- (4) Fabric

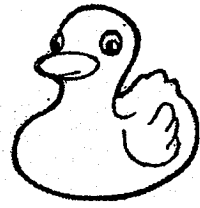
10. Tony noted down his observations of Object P.

- It is light.
- It is flexible.
- It absorbs water.



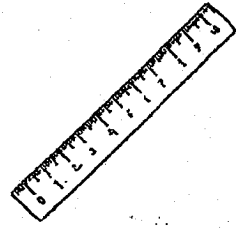
Which of the following could object P be?

(1)



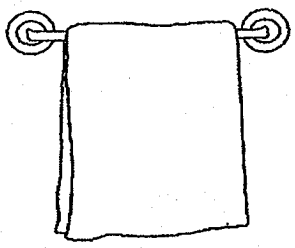
rubber duck

(2)



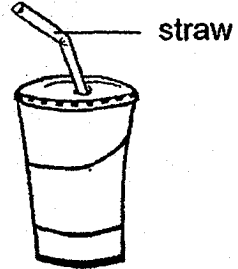
metal ruler

(3)



bath towel

(4)



drinking straw



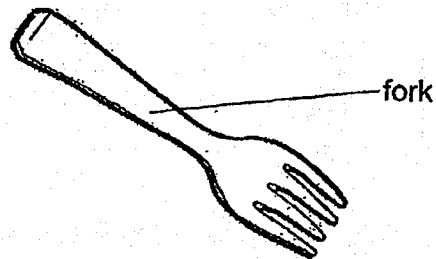
11. Study the grouping below.

Group E	Group F
Tissue paper	Glass rod
Raincoat	Metal cup

The objects are grouped according to whether they are \_\_\_\_\_.

- (1) strong
- (2) flexible
- (3) waterproof
- (4) transparent

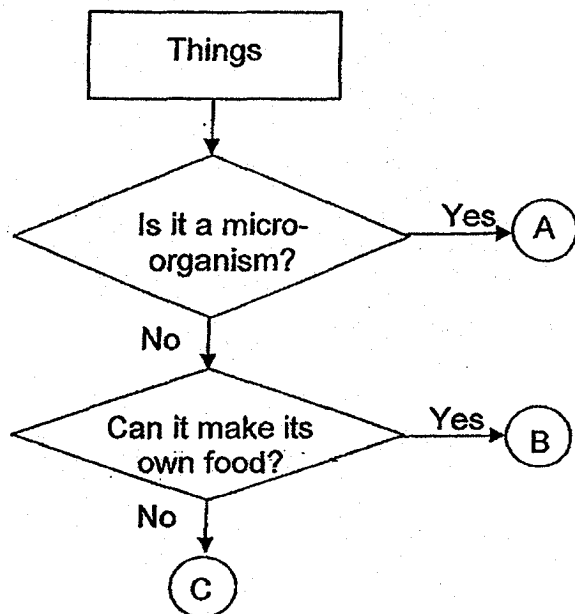
12. Study the picture below.



Which one of the materials cannot be used to make a fork?

- (1) Wood
- (2) Metal
- (3) Fabric
- (4) Plastic

13. Study the flow chart below.



Which of the following correctly represent A, B and C?

	A	B	C
(1)	Fungi	Animal	Plant
(2)	Fungi	Bacteria	Plant
(3)	Bacteria	Animal	Fungi
(4)	Bacteria	Plant	Fungi

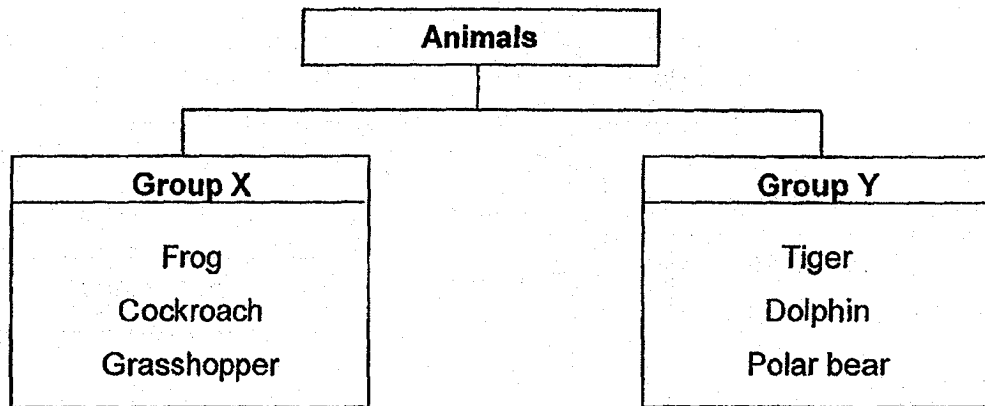
14. Kenny kept some guinea pigs in his cage. He fed them daily with food and water. He recorded the number of guinea pigs in the cage every two months, as shown in the table below. No guinea pigs were added or taken out of his cage.

Month	Number of guinea pigs
January	2
March	2
May	4
July	6

Based on the table above, what can you conclude about living things?

- (1) Living things can die.
- (2) Living things can reproduce.
- (3) Living things can respond to changes.
- (4) Living things need air, food and water to survive.

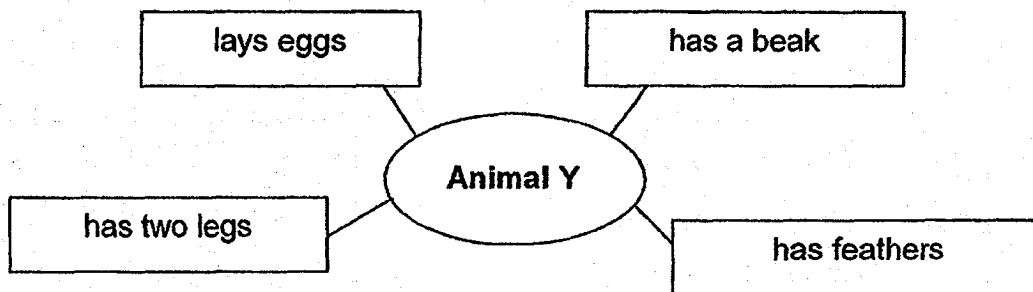
15. Study the two groups of animals below carefully.



Which of the following correctly describes the animals in group X and Y respectively?

	Group X	Group Y
(1)	Have six legs	Have four legs
(2)	Have wings	Have no wings
(3)	Have a pair of feelers	Have no feelers
(4)	Lay eggs	Give birth to young alive

16. Study the information about Animal Y in the diagram below.


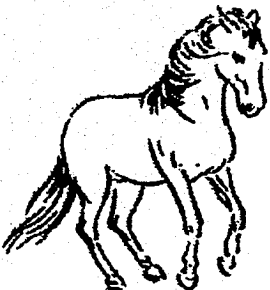




From the information above, what can you conclude about Animal Y?

- A Animal Y can fly.
- B Animal Y is a mammal.
- C Animal Y is not an insect.

- (1) A only
- (2) C only
- (3) A and C only
- (4) B and C only

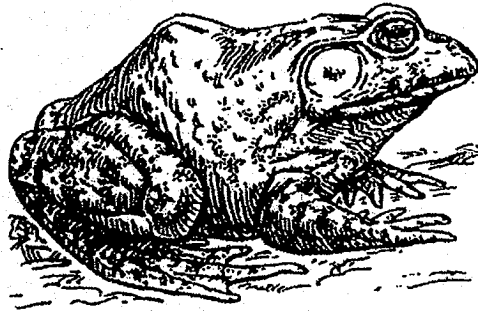
17. Study the table below carefully.

Group X	Group Y
 catfish	 horse
 swordfish	 monkey

Which of the following are suitable headings for Group X and Group Y?

	Group X	Group Y
(1)	Breathe through gills	Breathe through lungs
(2)	Have scales	Have feathers
(3)	Feed young with milk	Do not feed young with milk
(4)	Have fins	Have wings

18. Joshua, Norman and Serena observed the animal below.



After their observations, they made the following statements.

Joshua : The animal gives birth to young alive.

Norman : The animal is an amphibian because it has moist skin.

Serena : The animal is an insect because it has three body parts.

Whose statement is correct?

- (1) Joshua only
- (2) Norman only
- (3) Joshua and Serena only
- (4) Norman and Serena only

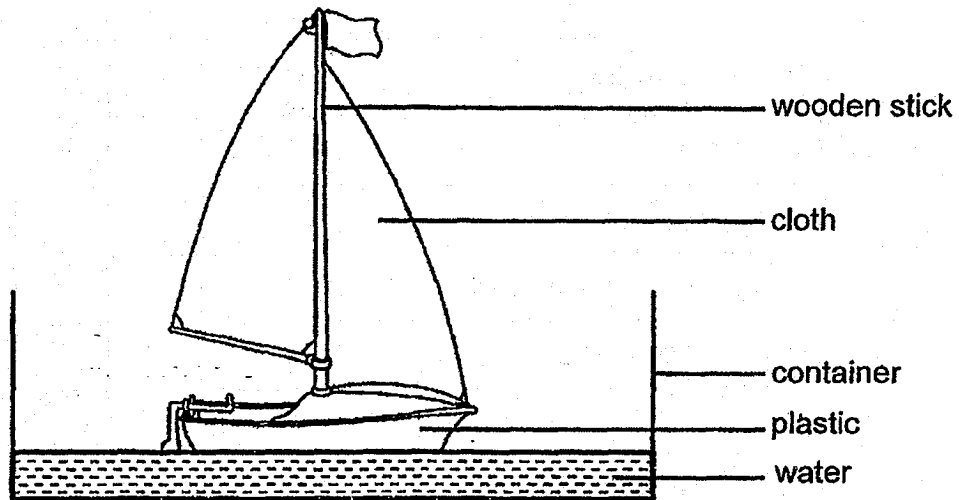
19. The table below shows the characteristics of four organisms, P, Q, R and S. A tick (✓) shows that the organism has that characteristic.

Characteristics	P	Q	R	S
Has 4 legs	✓	✓		✓
Has moist skin	✓			
Young hatches from egg	✓		✓	✓
Body is covered with scales				✓
Has hard body covering			✓	
Feeds its young with milk		✓		

Which animal is most likely a reptile?

- (1) P
- (2) Q
- (3) R
- (4) S

20. A group of pupils made a toy sailboat using some materials as shown in the picture below.

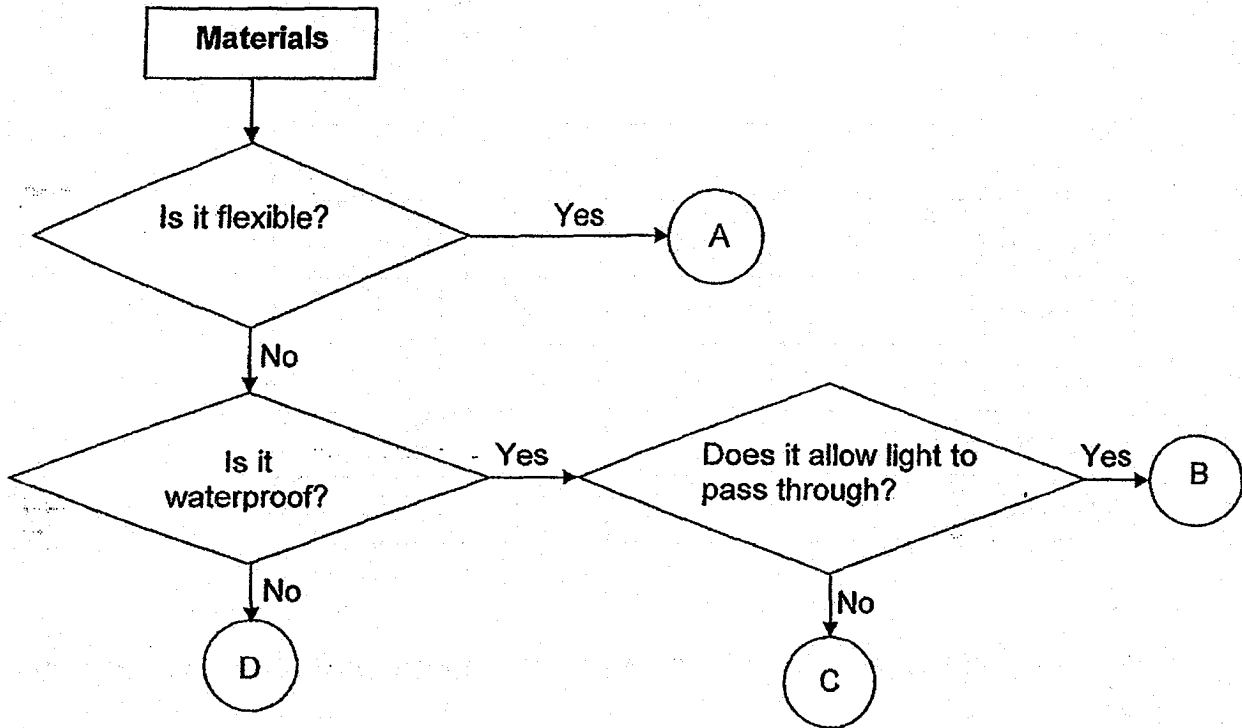


Which one of the following properties of the materials made them suitable for making the parts of the toy sailboat?

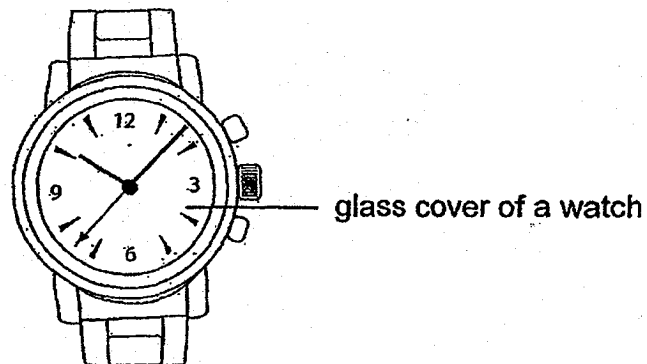
	cloth	wooden stick
(1)	It absorbs water.	It is strong.
(2)	It is flexible.	It floats in water.
(3)	It floats in water.	It is waterproof.
(4)	It is flexible.	It is strong.



21. Study the flow chart below.



Which one of the letters, A, B, C or D, can be used to make the glass cover of a watch?

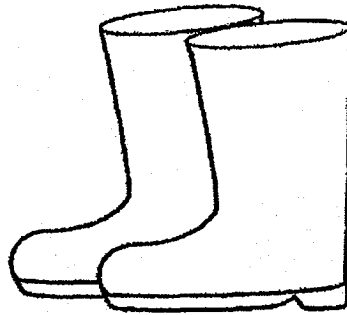


- (1) A
- (2) B
- (3) C
- (4) D

22. Malik observed some materials and recorded his observations in the table below. A tick (✓) shows that the material has the characteristic.

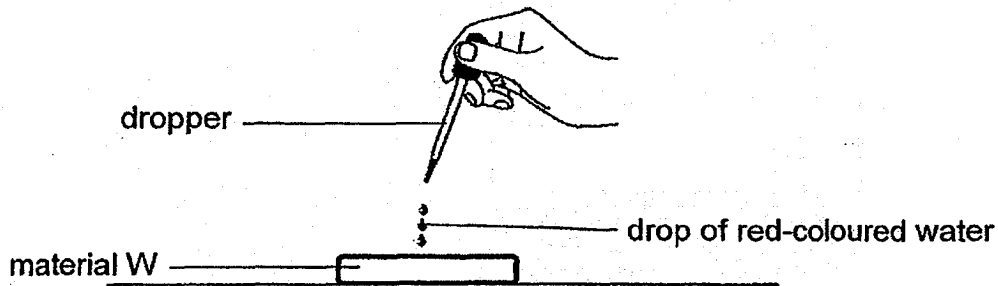
Properties	Materials			
	P	Q	R	S
Waterproof	✓	✓	✓	
Flexible	✓		✓	✓
Transparent		✓		
Tears easily	✓			✓

Which material is most suitable for making a pair of rubber boots to be used on rainy day?



- (1) P
- (2) Q
- (3) R
- (4) S

23. Siew Ting conducted an experiment as shown in the set-up below.



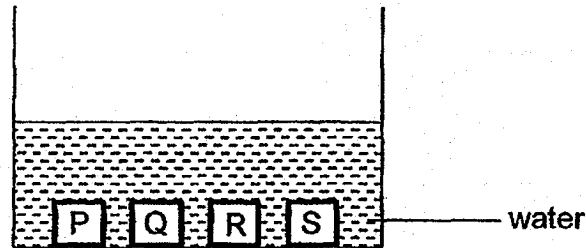
She dropped 5 drops of coloured water onto material W. She repeated her experiment with materials X and Y and recorded her observations in the table shown below.

Material	Observation
W	The water is absorbed and left a red-coloured patch on the material.
X	The drops of red-coloured water stayed on the surface.
Y	The drops of red-coloured water rolled-off the surface.

Siew Ting was trying to find out if the materials are \_\_\_\_\_.

- (1) strong
- (2) flexible
- (3) waterproof
- (4) transparent

24. Mr Ling placed 4 blocks of different materials of the same size into a container of water as shown in the diagram below.



He recorded the results in the table below.

Material	Mass at the start of the experiment (g)	Mass at the end of the experiment (g)
P	100	100
Q	100	102
R	100	140
S	100	150

Which of the material, P, Q, R or S does not absorb water?

- (1) P
- (2) Q
- (3) R
- (4) S



NAN HUA PRIMARY SCHOOL  
SEMESTRAL ASSESSMENT 1 – 2018  
PRIMARY 3

SCIENCE

BOOKLET B

10 Open-ended questions (32 marks)

Total Time for Booklets A and B : 1 hour 30 minutes

INSTRUCTIONS TO CANDIDATES

1. Write your name and index number in the space provided.
2. Do not turn over the page until you are told to do so.
3. Follow all instructions carefully.
4. Answer all questions.
5. Write your answers in this booklet.

Marks Obtained

Section B

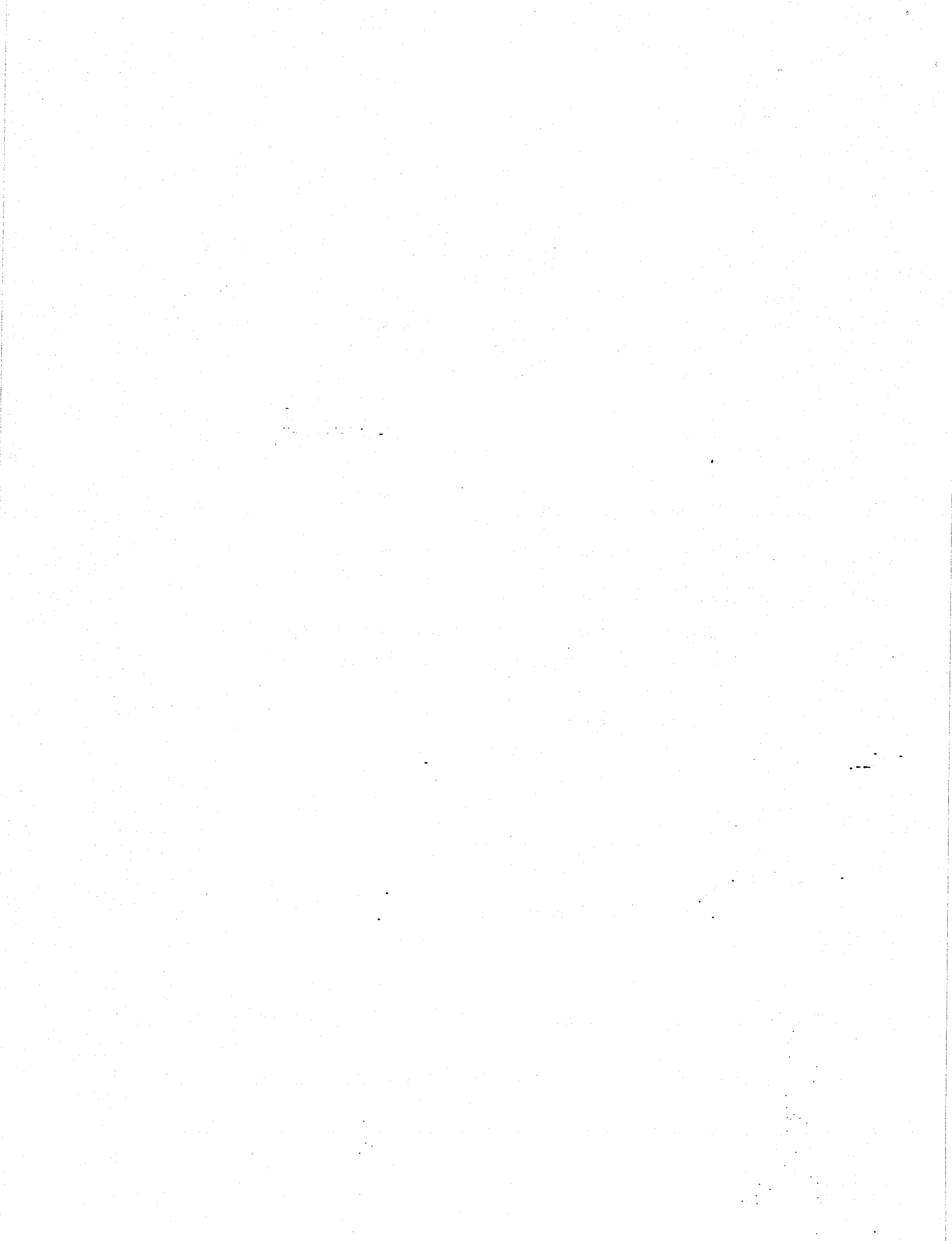
	/ 32
--	------

Name: \_\_\_\_\_ ( ) Class: P 3 \_\_\_\_\_

Date : 3 May 2018

Parent's Signature: \_\_\_\_\_

---



**Section B: (32 marks)**

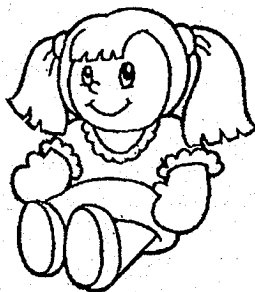
Write your answers to questions 25 to 34 in the space provided.

The number of marks allocated is shown in brackets [ ] at the end of each question or part of the question.

25. Maria has a plant, a doll and a hamster in her room.



plant



doll



hamster

She describes their characteristics in the table below.

Characteristic	F	G	H
Can it make food?	Yes	No	No
Can it reproduce?	Yes	Yes	No
Can it respond to changes?	Yes	Yes	No

(a) Which letter, F, G or H, represents the hamster? [1]

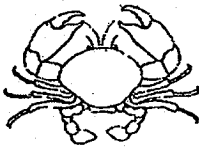
---

(b) Explain your answer in (a). [1]

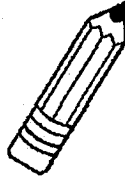
---

---

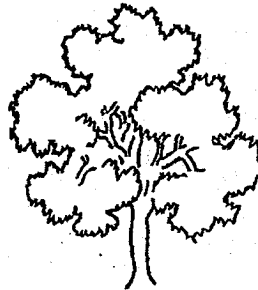
26. Study the pictures below.



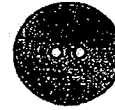
Crab



Pencil

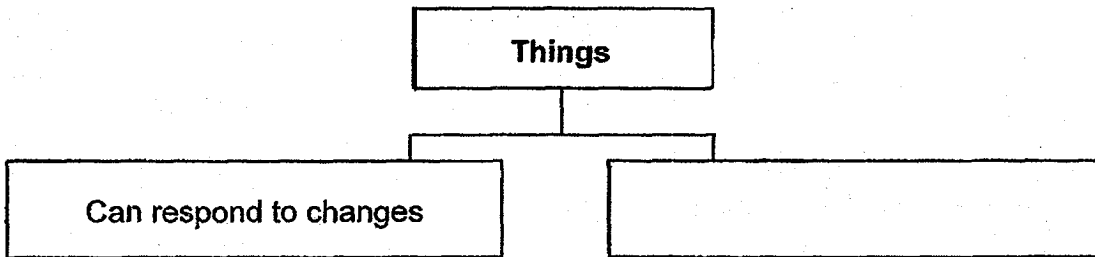


Tree

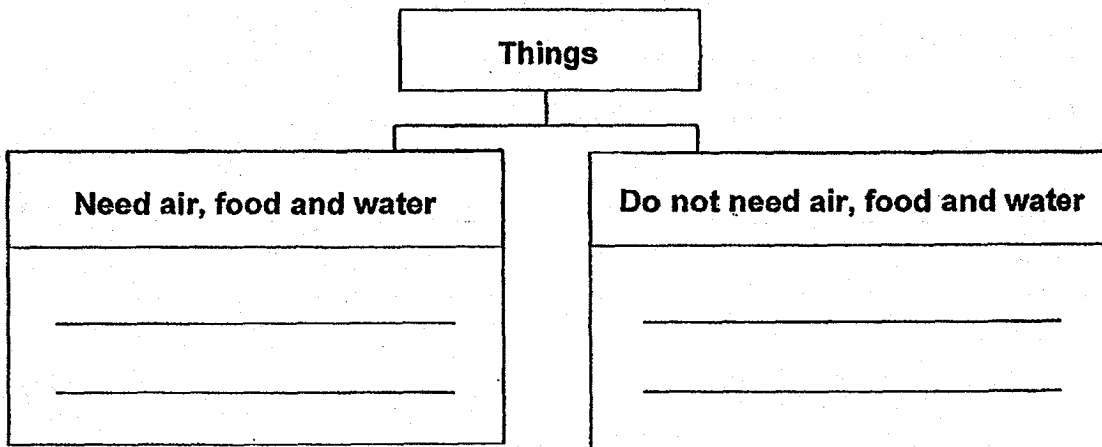


Button

- (a) The objects have been grouped in a certain way. One of the headings has been given to you. Give a suitable heading for the other group. [1]



- (b) The things above can be grouped in another way. Classify all the items above in the correct group. [2]



- (c) Describe the difference between how plants and fungi obtain food. [1]

---



---



27. Study the pictures of the three animals below.



A



B



C

- (a) Based on what you can observe from the pictures; which one of the above animals, A, B or C, does not belong to the same group? Give a reason for your answer. (Do not mention the animal group.) [1]

---

---

- (b) Which animal group does A belong to? [1]

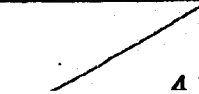
---

- (c) State two characteristics of the animal group mentioned in part (b). [2]

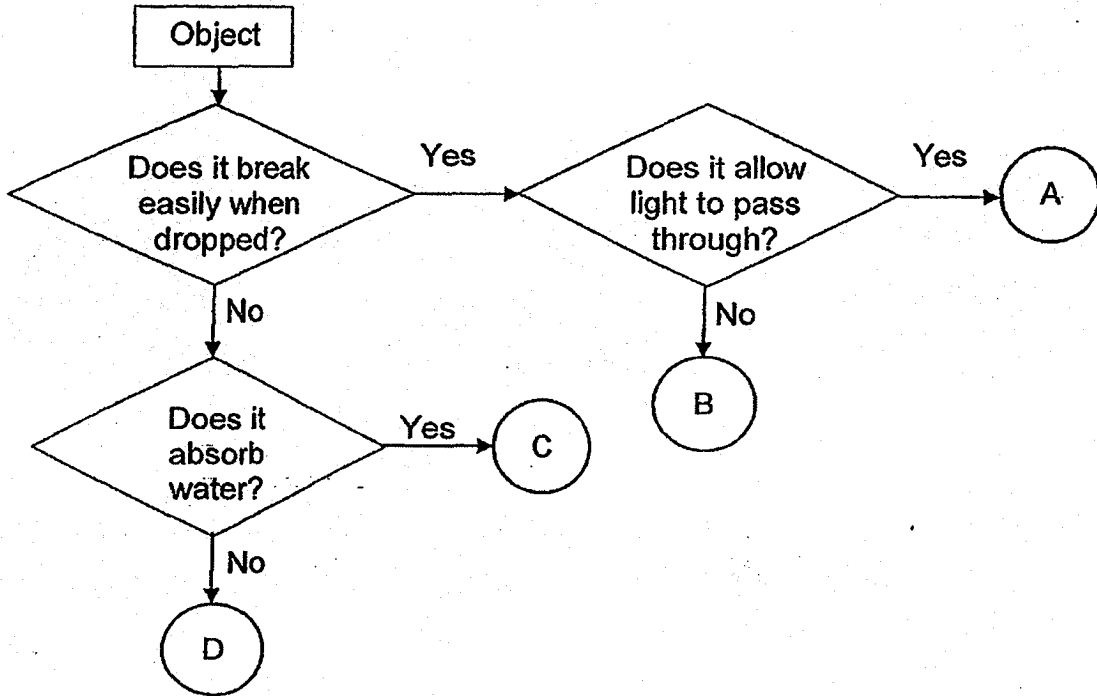
---

---

---

Score	
-------	---

28. Study the flow chart below.



(a) Based on the information in the flow chart, state two characteristics of object B. [2]

---

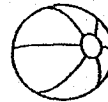


---

(b) Draw a line to match each letter in the flow chart to the correct object below. [2]

A •

•



plastic ball.

B •

•



window pane

C •

•



mirror

D •

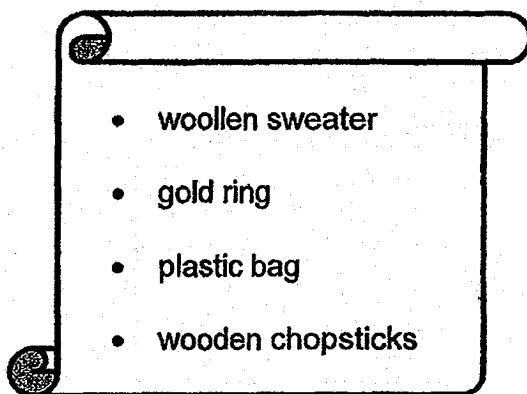
•



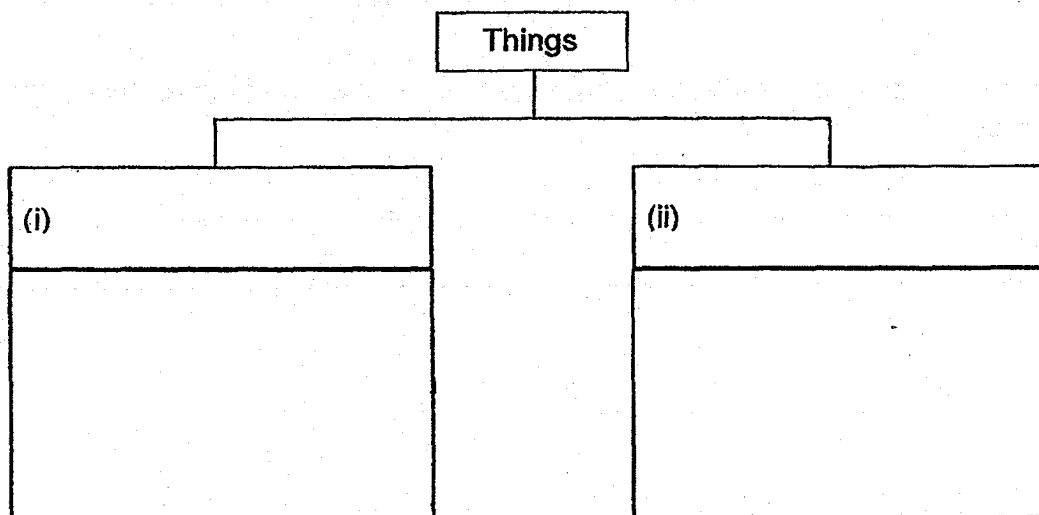
sponge

Score	4
-------	---

29. Bala was given a list of things shown below.

- 
- woollen sweater
  - gold ring
  - plastic bag
  - wooden chopsticks

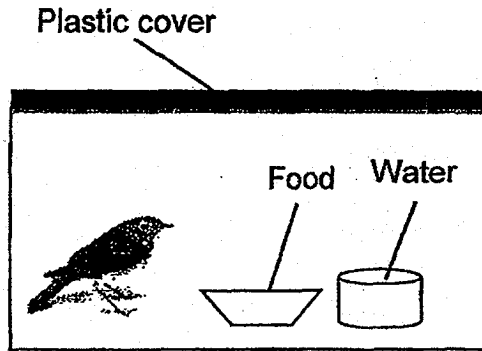
(a) Classify the things in the list above into two groups based on the physical properties of the materials they are made of. Give a suitable heading for each group. There should only be **two** objects in each group. [2]



(c) Name another material that is suitable for making a pair of chopsticks. [1]

---

30. Susan found a bird on her way home from school. She decided to bring it home and keep it as a pet. She placed the bird in the set-up as shown below.



- (a) Susan's mother saw the set-up that she has made for the bird and told her that it may not survive long in that set-up. What was wrong with Susan's set-up? [1]

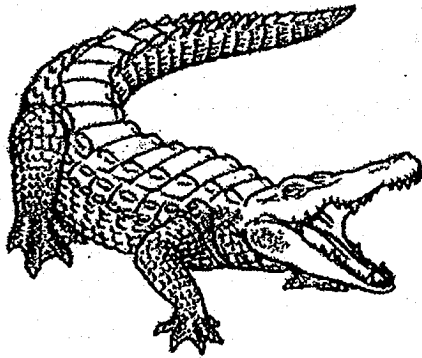
---

- (b) What can she do to ensure that the pet bird survives as long as possible in the set-up? [1]

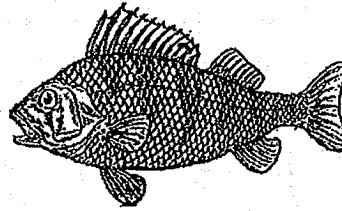
---

---

31. Study the two animals below.



**Animal X**



**Animal Y**

- (a) Identify the groups of animals that Animal X and Animal Y belong to. [1]

Animal X: \_\_\_\_\_

Animal Y: \_\_\_\_\_

- (b) Based only on what you can observe from the pictures above, state one similarity between the two animals. Do not mention their shape, size or colour. [1]

---

---

- (c) Based only on what you can observe from the pictures above, state one difference between the two animals. Do not mention their shape, size or colour.) [1]

---

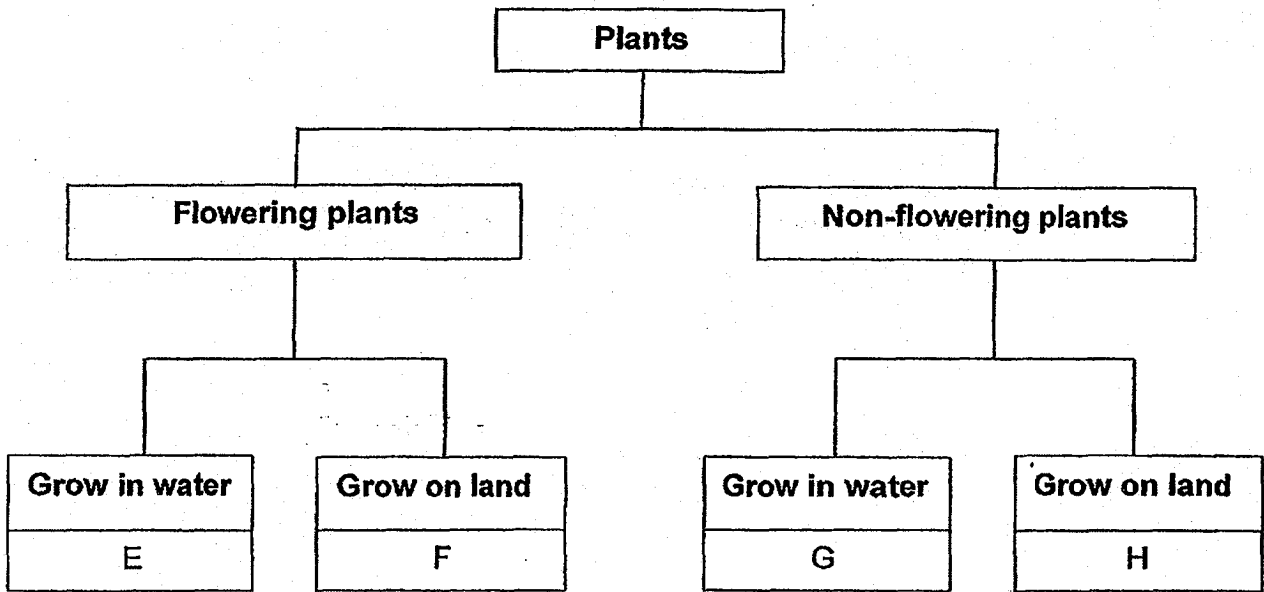
---

- (d) How do Animal X and Animal Y reproduce? [1]

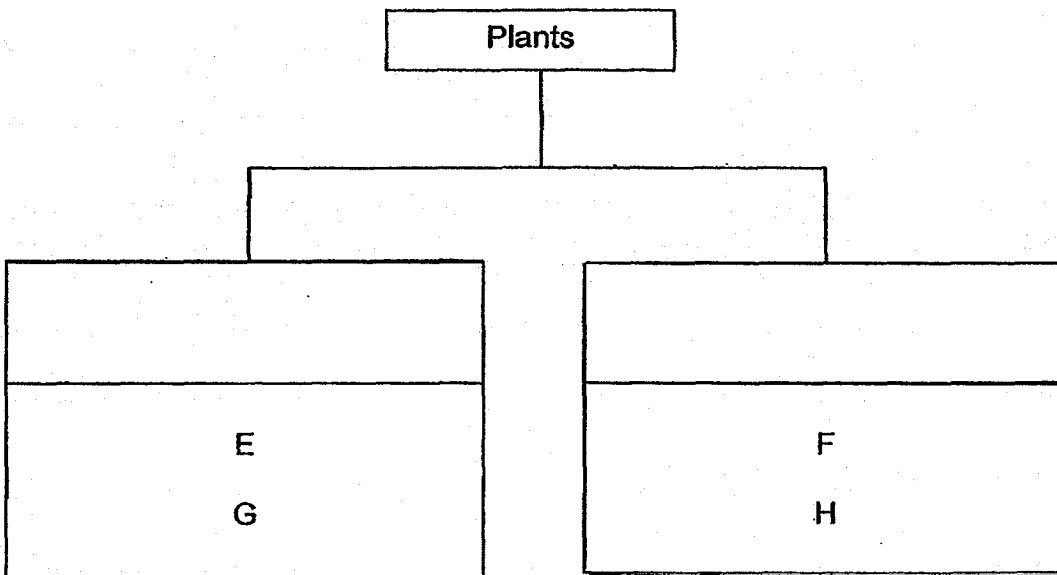
---

---

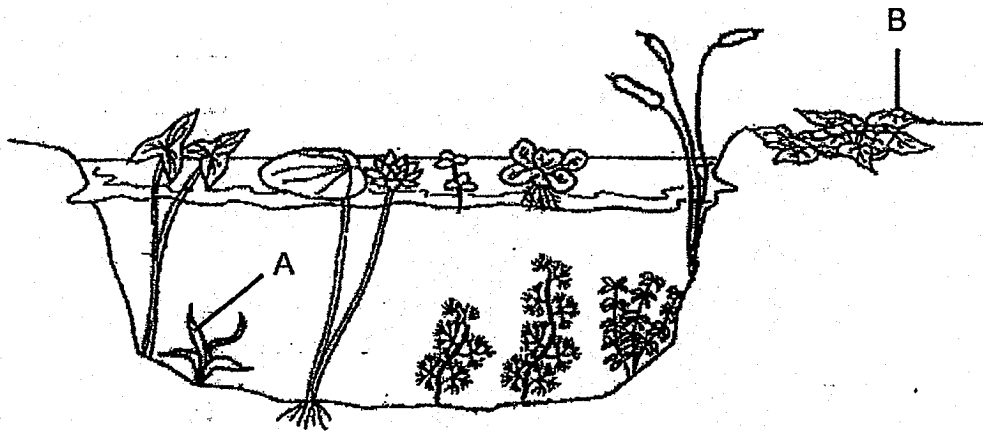
32. Study the classification chart below.



(a) Plants E, F, G and H are regrouped into two different groups. Using the information from the classification chart above, write down two suitable headings for the classification chart below. [1]



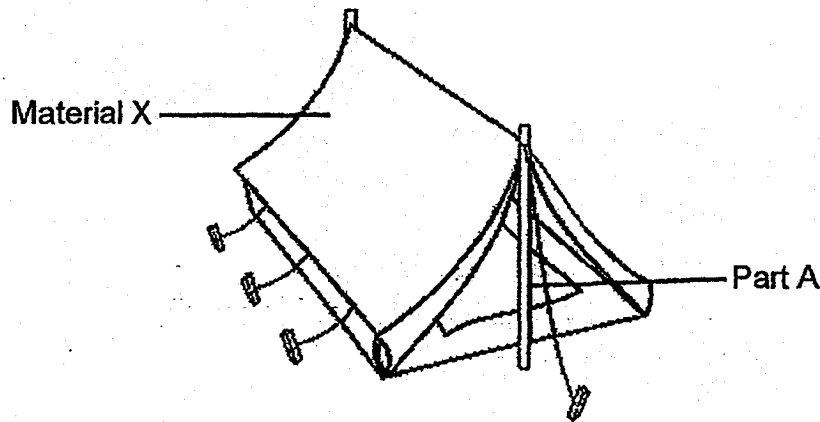
(b) The picture below shows some plants.



Which plant, A or B, can be grouped together with E and G in part (a)? [1]

---

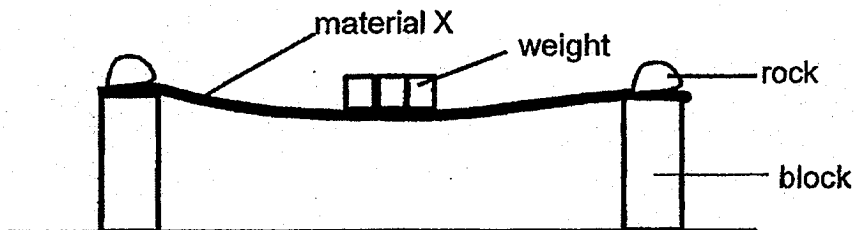
33. The scouts had their outdoor camp in the school field. Their teacher told them that they would be sleeping in a tent which would provide them shelter from the sun and rain. The tent can be rolled up and placed into a small bag to be carried around.



- (a) What physical property must material X have in order to provide shelter from the sun? [1]
- 
- (b) State two physical properties of material X, other than the one stated in part (a) that makes it a suitable material for making the tent. [2]
- 
- 
- (c) Name a material that can be used to make part A. [1]
-



34. Wee Boon placed material X on two blocks as shown in the picture below. He added 1-kg weights at the centre of material X one at a time until the material broke.



He repeated the experiment with materials Y and Z of the same thickness and size and recorded his findings in the table below.

Material	Number of 1-kg weights added to the material until it broke
X	17
Y	3
Z	100

- (a) Arrange the materials, X, Y and Z, from the weakest to the strongest. [1]

\_\_\_\_\_ , \_\_\_\_\_ , \_\_\_\_\_  
 (weakest) (strongest)

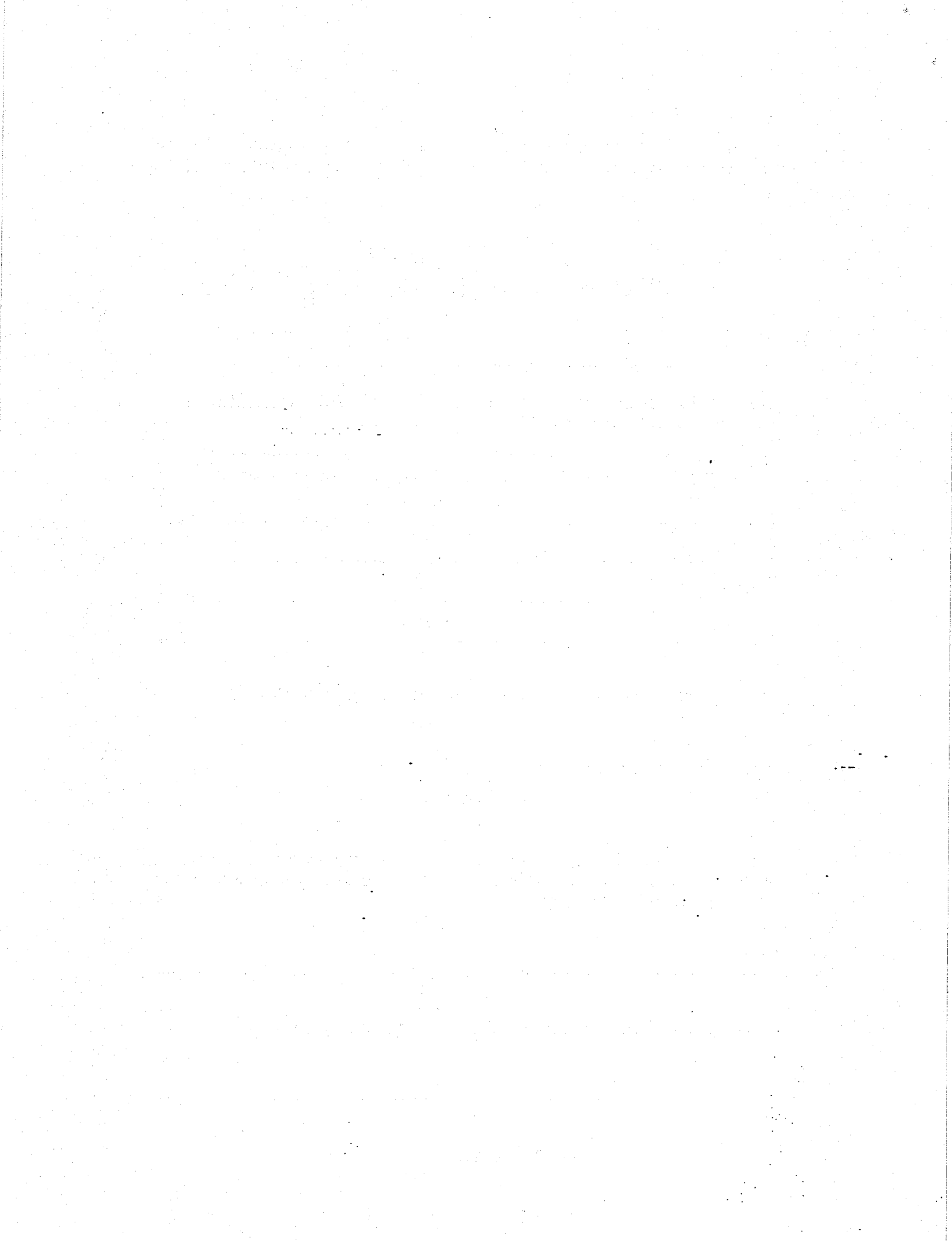
- (b) Wee Boon concluded that material Z is the most suitable material to be used to make a table. Explain how Wee Boon came to this conclusion based on the information from the table. [1]

\_\_\_\_\_

- (c) Which physical property of the material was Wee Boon testing? [1]

\_\_\_\_\_

End of Paper



**EXAM PAPER 2018 (P3)**

**SCHOOL : NAN HUA**

**SUBJECT : SCIENCE**

**TERM : SA1**

Q1	Q2	Q3	Q4	Q5	Q6	Q7	Q8	Q9	Q10
2	1	3	3	3	2	2	1	2	3
Q11	Q12	Q13	Q14	Q15	Q16	Q17	Q18	Q19	Q20
2	3	4	2	4	2	1	2	4	4
Q21	Q22	Q23	Q24						
2	3	3	1						

**Q25) a) G**

**b) The hamster can reproduce and respond to changes but it cannot make food as it is not a plant.**

**Q26) a) Do not respond to changes**

**b) Need air, food and water – Crab , Tree**

**Do not need air, food and water – Pencil , Button**

**c) Plants can make its own food. Fungi feed on other living things, dead or alive.**

**Q27) a) B. A and C have four legs but B does not.**

**b) Mammal**

c) They have hair. They give birth to their young alive.

Q28) a) It is easily break and does not allow light to pass through it.

b) A – window pane B – mirror C – sponge D – plastic ball

Q29) a) i) flexible – woollen sweater , plastic bag

ii) inflexible – gold ring , wooden chopsticks

c) Metal

Q30) a) Living things need air, food and water to survive but the plastic cover is blocking the air from coming in.

b) Susan can poke some holes on the plastic cover so air would pass through.

Q31) a) Animal X : Reptile

Animal Y : Fish

b) Animal X and Y have a tail.

c) Animal X has legs but animal Y does not.

d) X and Y reproduce by laying eggs.

Q32) a) Grows in water – E , G

Grows on land – F , H

b) A

Q33) a) It does not allow light to pass through.

b) It must be waterproof and flexible.

c) Wood

Q34) a) Y , X , Z

b) It can hold the most number of 1 kg weight before breaking so it is the strongest.

c) Strength