

Pei Chun Public School  
Semestral Assessment 2 - 2009  
Mathematics  
Primary 4

**Booklet A**

Name: \_\_\_\_\_ (     )

Date: 28 October 2009

Class: Primary 4 \_\_\_\_

Time: 2 h

Maths Teacher: \_\_\_\_\_

Questions 1 to 12 carry 2 marks each. For each question, four options are given. One of them is the correct answer. Make your choice (1, 2, 3 or 4) and write its number in the brackets provided. (24 marks)

1. 27 thousands and 6 tens is the same as \_\_\_\_\_.

(1) 276

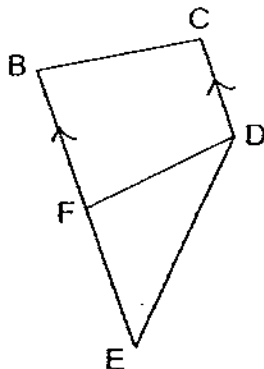
(2) 2760

(3) 27 006

(4) 27 060

(     )

2. Which line in the figure below is parallel to CD?



(1) BC

(2) DF

(3) DE

(4) BF

(     )

3. Which of the following numbers when rounded off to the nearest ten becomes 1560?

~~(A)~~ 1556

~~(B)~~ 1566

~~(C)~~ 1599

~~(D)~~ 15 600

( )

4. Which of the following is a multiple of 7?

~~(A)~~ 1

~~(B)~~ 14

~~(C)~~ 17

~~(D)~~ 71

( )

5. How many one-thirds are there in 2 wholes?

~~(1)~~  $1\frac{1}{2}$

~~(2)~~  $\frac{2}{3}$

~~(3)~~ 3

~~(4)~~ 6

( )

6. The digit 8 in 24.183 stands for \_\_\_\_\_.

~~(1)~~ 8

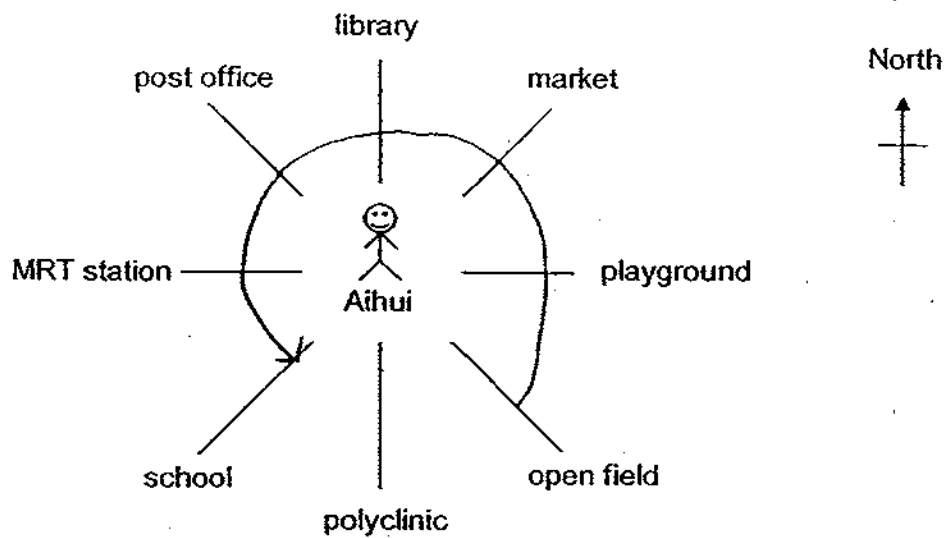
~~(2)~~ 0.8

~~(3)~~ 0.08

~~(4)~~ 0.008

( )

7. The diagram below shows some places in Aihui's neighbourhood.



Aihui was facing south-east. She made a  $\frac{3}{4}$ -turn in an anti-clockwise direction. Which place is she facing now?

- (1) open field
  - (2) market
  - (3) school
  - (4) post office ( )
8. Sasha started reading at 11.45 a.m. She read for 35 minutes. At what time did she stop reading?

- (1) 00 20
- (2) 11 10
- (3) 12 20
- (4) 23 10 ( )

9. There are 48 rows of seats in a concert hall. There are 32 seats in each row. How many seats are there in the concert hall altogether?

~~(1)~~ 80

~~(2)~~ 240

~~(3)~~ 1326

~~(4)~~ 1536

( )

10. Jordan ate  $\frac{1}{4}$  of a pizza. Junita ate  $\frac{3}{8}$  of the pizza. What fraction of the whole pizza was left?

~~(1)~~  $\frac{3}{8}$

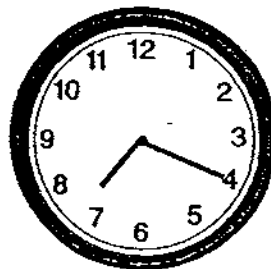
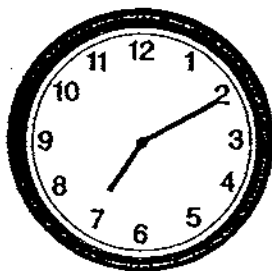
~~(2)~~  $\frac{1}{2}$

~~(3)~~  $\frac{1}{3}$

~~(4)~~  $\frac{5}{8}$

( )

11. The minute hand of a clock moved from 7.10 p.m. to 7.20 p.m.



The minute hand had moved \_\_\_\_\_ degrees.

~~(1)~~ 10

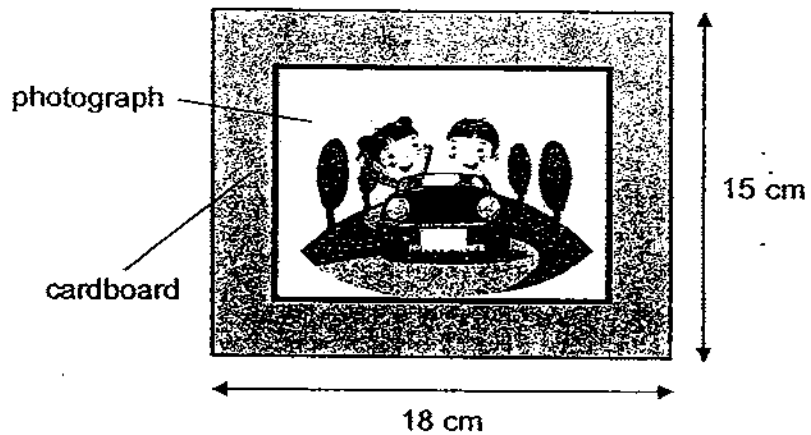
~~(2)~~ 30

~~(3)~~ 60

~~(4)~~ 120

( )

12. A rectangular photograph measuring 12 cm by 10 cm was pasted on a rectangular cardboard.



Find the area of the cardboard not covered by the photograph.

- (1)  $120 \text{ cm}^2$   
(2)  $150 \text{ cm}^2$   
(3)  $270 \text{ cm}^2$   
(4)  $390 \text{ cm}^2$
13. Refer to Booklet K.  
14. Refer to Booklet K.  
15. Refer to Booklet K.

End of Booklet A

Pei Chun Public School  
Semestral Assessment 2 - 2009  
Mathematics  
Primary 4

**Booklet B**

Name : \_\_\_\_\_ (     )

Marks :

Class : Primary 4

Date : 28 October 2009

Time : 2 h

Maths Teacher : \_\_\_\_\_

Parent's Signature : \_\_\_\_\_

<b>Booklet A</b>	24
<b>Booklet B</b>	56
<b>Booklet K</b>	20
<b>TOTAL</b>	100

Questions 16 to 27 carry 2 marks each. Show your working clearly in the space below each question and write your answers in the spaces provided.  
For questions which require units, give your answers in the units stated.

Do not write in this space

( 24 marks )

16. Write twenty-four thousand and nine in figures.

Ans : \_\_\_\_\_

17.  $0.08 = \frac{8}{\boxed{?}}$

What is the missing number in the box?

Ans : \_\_\_\_\_

18. Fill in the blank with the correct number in the number pattern below.

870, 840, 810, \_\_\_\_\_, 750

Ans : \_\_\_\_\_

---

19. Write  $\frac{17}{6}$  as a mixed number in its simplest form.

Ans : \_\_\_\_\_

---

20. Express  $\frac{91}{1000}$  as a decimal.

Ans : \_\_\_\_\_

---

21. Arrange these numbers from the smallest to the greatest.

0.87, 0.807, 6.1, 0.015

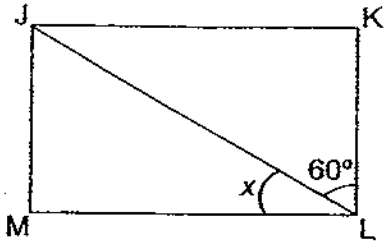
\_\_\_\_\_ (smallest)

\_\_\_\_\_ (greatest)

---

Do not write in this space

22. In the figure below, JKLM is a rectangle. Find the value of  $\angle x$ .



Ans : \_\_\_\_\_ °

23. Arrange the following fractions from the greatest to the smallest.

$$\frac{2}{3}, \quad \frac{5}{12}, \quad \frac{7}{12}$$

$$\frac{8}{12}$$

\_\_\_\_\_ (greatest) \_\_\_\_\_ (smallest)

24. What fraction of the figure below is shaded? Express your answer in the simplest form.

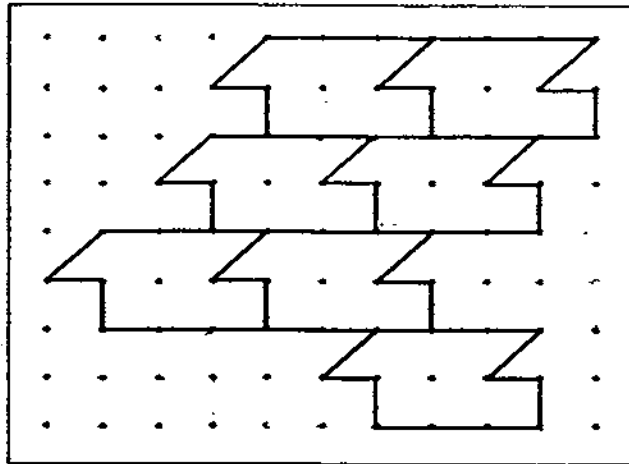


Ans : \_\_\_\_\_

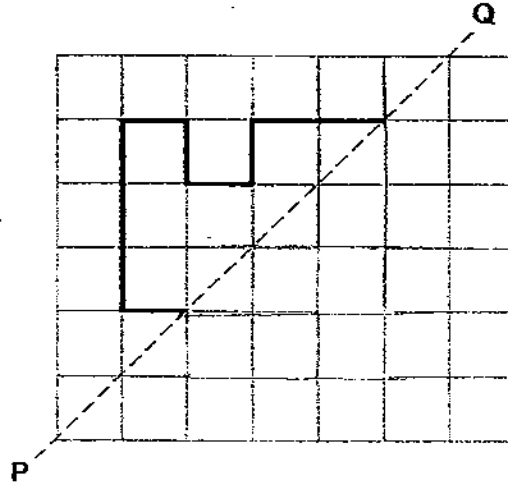


25. The pattern in the box shows part of a tessellation. Extend the tessellation by drawing **three more unit shapes** in the space provided within the box.

Do not w  
in this sp



26. Complete the figure below such that PQ is the line of symmetry.



27. The mass of a mango is  $\frac{1}{4}$  the mass of a watermelon. The watermelon is 0.9 kg heavier than the mango. What is the total mass of the two fruits?

Ans : \_\_\_\_\_ kg

28. Refer to Booklet K.  
29. Refer to Booklet K.  
30. Refer to Booklet K.

Questions 31 to 38 carry 4 marks each. Show your working clearly in the space below each question and write your answers in the spaces provided. ( 32 marks )

Do not w  
in this sp

31. Rajah is 0.24 m taller than Isaac. Meredith is 0.05 m taller than Isaac. Meredith is 1.47 m tall. Find the total height of the three children.

Ans : \_\_\_\_\_ [4]

32. There are a total of 24 350 Chinese, Malay and Tamil books in a library. Half of the books are Chinese books. There are 625 more Malay books than Tamil books. How many Tamil books are in the library?

Do not  
in this s

Ans : \_\_\_\_\_ {4}

33. On a Sunday morning, Jean ran a distance of  $1\frac{4}{5}$  km. She ran  $1\frac{3}{10}$  km more than Britney.

Do not write in this space

- (a) What was the distance run by Britney?
- (b) What was the total distance run by both girls?

Ans : (a) \_\_\_\_\_ [2]

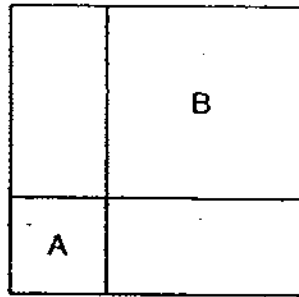
(b) \_\_\_\_\_ [2]

34. Aminah bought 5 chocolate bars and 6 packets of sweets. Each chocolate bar cost \$2.55 and each packet of sweets cost \$1.20. How much did she pay in all?

Do not w  
in this sp

Ans : \_\_\_\_\_ [4]

35. The figure below is made up of 2 identical rectangles and two squares, A and B. The perimeter of each rectangle is 44 cm. Find the area of the figure.

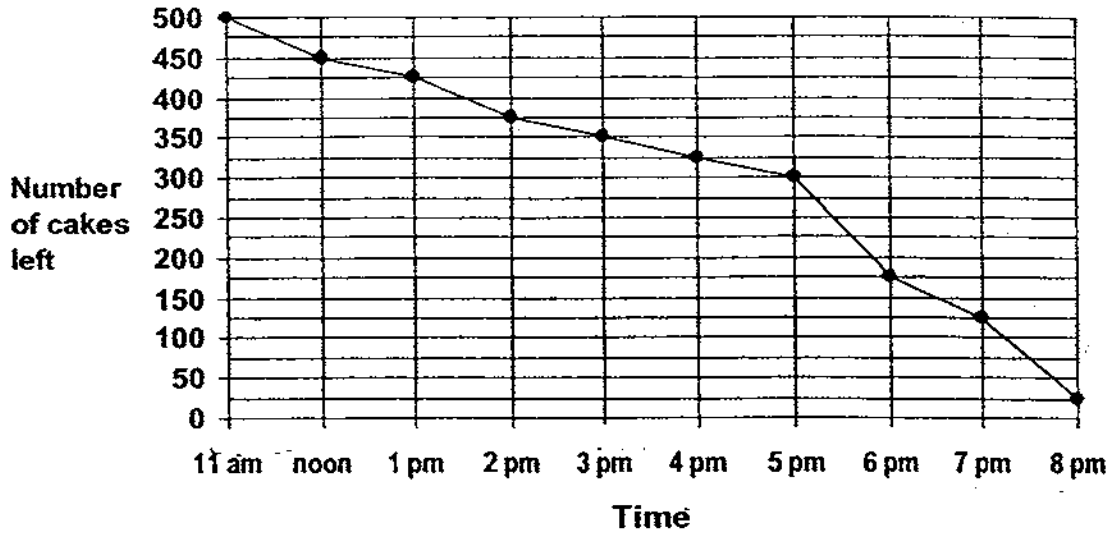


Do not write  
in this space

Ans : \_\_\_\_\_ [4]

36. A cake shop opens from 11 a.m. to 8 p.m. Each cake is sold for \$6. The graph shows the number of cakes left in the shop at various times yesterday.

Do not write in this space



- (a) How many cakes were there when the shop opened?
- (b) Between which two hours was the greatest number of cakes sold?
- (c) How much money did the shop collect from selling cakes yesterday?

Ans : (a) \_\_\_\_\_ [1]  
 (b) \_\_\_\_\_ and \_\_\_\_\_ [1]  
 (c) \_\_\_\_\_ [2]

37. Mr Lam sold storybooks at \$5 each and comic books at \$3 each. He collected \$129 from the sale of a number of storybooks and comic books. He sold 3 more comic books than storybooks. How many comic books did Mr Lam sell?

Do not  
in this s

Ans : \_\_\_\_\_ [4]



38. Salwa and Deva have \$187 altogether. Deva and Jason have \$173 altogether. Salwa and Jason have \$152 altogether. How much money does Salwa have?

Do not  
in this :

Ans : \_\_\_\_\_ [4]

---

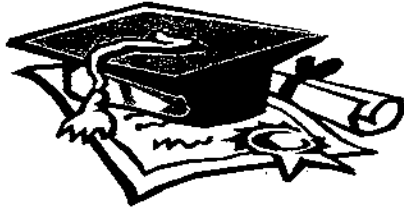
39. Refer to Booklet K.

40. Refer to Booklet K.

---

**End of Booklet B**

Set by : Mr Salleh Bajrai  
Vetted by: P4 Math Committee Teachers

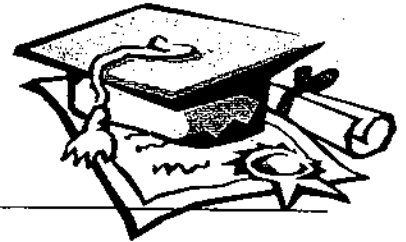


# ANSWER SHEET

**EXAM PAPER 2009**

**SCHOOL : PEI CHUN PRIMARY**  
**SUBJECT : PRIMARY 4 MATHEMATICS**

**TERM : SA2**



Q1	Q2	Q3	Q4	Q5	Q6	Q7	Q8	Q9	Q10	Q11	Q12
4	4	1	2	4	3	3	3	4	1	3	2

16) 24009

17) 100

18) 780

19)  $2\frac{5}{6}$

20) 0.091

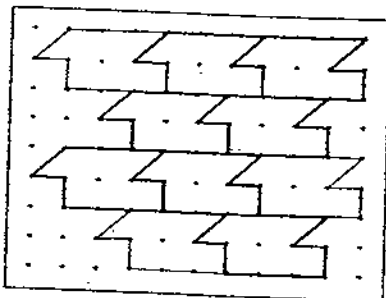
21) 0.015, 0.807, 0.87, 6.1

22)  $30^\circ$

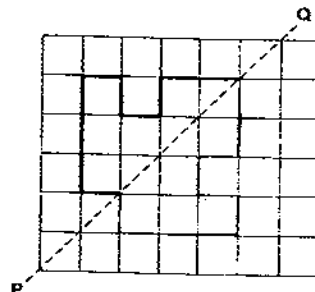
23)  $\frac{2}{3}$ ,  $\frac{7}{12}$ ,  $\frac{5}{12}$

24)  $\frac{2}{3}$

25)



26)



27) 1.5kg

31) Isaac  $\rightarrow 1.47 - 0.05 = 1.42$

Rajah  $\rightarrow 1.42 + 0.24 = 1.66$

Total height of the three children  $\rightarrow 1.66 + 1.47 + 1.42 = 4.55\text{m}$

32) Tamil + Malay books  $\rightarrow 24350 \div 2 = 12175$

$12175 - 625 = 11550$

$11550 \div 2 = 5775$  Tamil books

33)a) Britney  $\rightarrow 18/10 - 1 \frac{3}{10} = 5/10\text{km}$

b) Distance ran by both girls  $\rightarrow 5/10 + 18/10 = 33/10\text{km}$

34) 5 chocolate bars  $\rightarrow 5 \times \$2.55 = \$12.75$

6 packets of sweets  $\rightarrow 6 \times \$1.20 = \$7.20$

Total payment  $\rightarrow \$12.75 + \$7.20 = \$19.95$

35) Length + Breadth of rectangle  $\rightarrow 44 \div 2 = 22$

Length of square figure  $\rightarrow 22 \times 22 = 484\text{cm}^2$

36)a) 500

b) 5 p.m. and 6 p.m.

c) \$2850

37)  $129 - 9 = 120$

$5 + 3 = 8$

$120 \div 8 = 15$

$15 + 3 = 18$  comic books.

38)  $187 + 152 = 339$

2 Salwa  $\rightarrow 339 - 173 = 166$

Salwa  $\rightarrow 166 \div 2 = \$83$