



West Spring Secondary School MID-YEAR EXAMINATION 2019

ENGLISH LANGUAGE

1128/01

Paper 1 Writing

INSERT

SECONDARY 3 EXPRESS

Name _____ () **Date** 6 May 2019

Class _____ **Duration** 1 hour

READ THESE INSTRUCTIONS FIRST

This insert contains **Section A**.

Write your answers in the spaces provided.

This document consists of 2 printed pages.

Setter(s) Mr Israel Tan

[Turn over

Section A [10 marks]

Carefully read the text below, consisting of 12 lines, about safety for women in Singapore. The first and last lines are correct. For eight of the lines, there is one grammatical error in each line. There are two more lines with no errors.

If there is NO error in a line, put a tick (✓) in the space provided.

If the line is incorrect, circle the incorrect word and write the correct word in the space provided.

The correct word you provide must not change the original meaning of the sentence.

Examples:

I arrived to my destination at 2pm.at.....

My mother always wears sensible clothes.✓.....

According to a study by ValueChampion, a financial analysis and comparison website, the safer country in Asia Pacific for women to live in is none other than Singapore. It ranked 1.....
 Singapore and New Zealand in joined first place in a list of the safest countries for women to 2.....
 live in, citing their "impressive healthcare, safe and opportunity indicators". The study ranked 3.....
 14 countries in Asia Pacific using a weighted average which weighted safety the most, 4.....
 followed by healthcare and opportunity. It said that Singapore and New Zealand has 5.....
 consistently scored well on global indices. This indicates that Singapore and New Zealand 6.....
 have "low levels of internal and international conflicts, suffer minor gender inequality but see 7.....
 positive developmental and opportunity growth potential", it says. Furthermore, according to 8.....
 the study, both countries have low crime rates and existing law against domestic assault and 9.....
 sexual harassment. Singapore even has "one off the lowest homicide rates in the world", it 10.....
 added.

Adapted from <https://www.businessinsider.sg/singapore-is-the-safest-asian-country-for-women-to-live-in>



West Spring Secondary School MID-YEAR EXAMINATION 2019

ENGLISH LANGUAGE

1128/01

Paper 1 Writing

SECONDARY 3 EXPRESS

Name _____ () **Date** 6 May 2019

Class _____ **Duration** 1hour

Additional Materials: Insert
 Writing Paper

READ THESE INSTRUCTIONS FIRST

Write your index number, class and name on all the work you hand in.
Write in dark blue or black pen on both sides of the paper.
Do not use staples, paper clips, highlighters, glue or correction fluid.

Answer **Section A** and **Section B**.

Section A is an Insert.

For **Section A** write your answers in the space provided on the Insert.

For **Section B** write your answers on the writing paper provided.

At the end of the examination, submit your answers for Section A and Section B separately.

The number of marks is given in brackets [] at the end of each question or part question.

This document consists of **3** printed pages (including this cover page) and **1** Insert.

Setter(s) Mr Israel Tan

[Turn over

Section B [30 marks]

You are advised to write between 250 and 350 words for this section.

You should look at the printout of the school webpage on page 3, study the information carefully and plan your answer before beginning to write.

The Principal of your school has announced that there will be an enrichment programme in replacement of mid-year examinations for Secondary Three students from 2020 onwards. This is in line with MOE's announcement that formal assessments will be reduced to free up time for students to experience the joy of learning. Three enrichment programmes have thus been shortlisted and posted on the school website. Before making the final decision, the Principal has invited any student who would like to express their preference to write an email to him to explain their views.

Write an email to your Principal to explain your choice. In it you should explain:

- which enrichment programme you like best and why
- how this programme will give students the joy of learning
- how parents can be involved and add value to the programme.

Write your email to your Principal in clear, accurate English. Your tone should be polite and persuasive, showing your enthusiasm for this new direction in education.

You may add any other details you think will be helpful.

You should use your own words as much as possible.

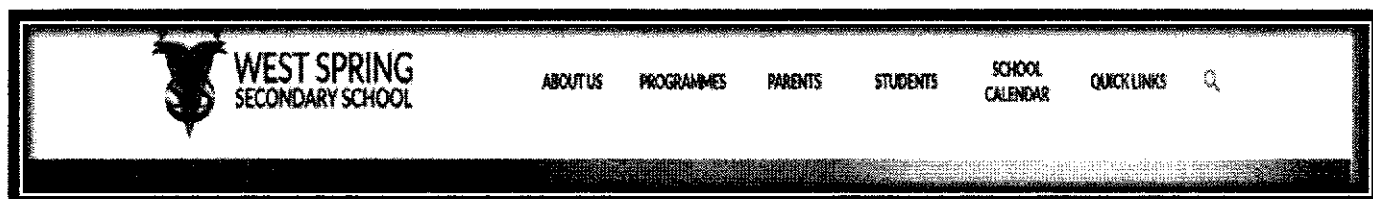
Adapted from:

<https://www.gifted-school.com/public-speaking-interview-skills/>

<http://www.tedxsingapore.sg/speaking.php>

<https://www.codinglab.com.sg/our-classes/singapore-secondary/>

<https://www.coursera.org/learn/creativity-entrepreneurship>



SECONDARY THREE ENRICHMENT PROGRAMMES 2020 FOR CONSIDERATION



Option A

ORACY PROGRAMME

Our coaches have very strong corporate experience and credentials, several of whom are successful entrepreneurs, experienced corporate leaders and senior media trainers. Our comprehensive curricula will prepare the students for the following:

- Ceremonial and impromptu presentations
- Negotiation skills
- Problem solving and conflict resolution skills
- Managing & facilitating group discussions.

Option B

ARTIFICIAL INTELLIGENCE (A.I.) PROGRAMME

Ever wondered how Siri was programmed? Want to learn about the self-driving cars which are poised to replace all drivers in the world? Students will learn:

- How A.I. works
- How machines learn
- How to analyse machine data
- How to create your own self-learning robot.



Option C

ENTREPRENEURSHIP PROGRAMME

This is entrepreneurship you won't learn at a business school but, instead, in a music studio!

What you'll learn:

- Why entrepreneurship, like singing, is a human instinct
- How to approach your business start-up like learning a musical instrument
- How applying the 'musician mindset' solves problems creatively
- Why product development is like songwriting.

End of Paper

WSSS MYE 2019/SEC 3EXP/P1

PartnerInLearning

More papers at www.2015estpapersfree.com



West Spring Secondary School MID-YEAR EXAMINATION 2019

ENGLISH LANGUAGE
Paper 2 Comprehension

1128/02

INSERT

SECONDARY 3 EXPRESS

Name _____ () **Date** 6 May 2019

Class _____ **Duration** 1 hour

READ THESE INSTRUCTIONS FIRST

This Insert contains Text 1 only.

This document consists of 3 printed pages, including the cover page.

Setter(s) Ms. Veronica Aw

Turn over

Text 1

The text below is about *Kleptomania*, a type of habitual stealing. Read it carefully and answer Questions 1 – 8 in the Question Paper Booklet.

- 1 As early as 1911, an article on The Psychology of Kleptomania appeared in The Lancet, one of the world's oldest and most respected medical journals. The author highlighted cases of theft that took place during the season of major sales in shops, commenting that a few of the incidents "present very puzzling features, so motiveless in the criminal act". In 1926, again in the Lancet, yet another writer noted that a "pathological impulse to steal really exists." Kleptomania was seen as a distressing and disabling disorder. After a century, what more have we uncovered about this affliction? 5
- 2 The term "Kleptomania" is of Greek origin. To the moralists, "Kleptomania" does not exist. To them, it is "greed and dishonesty". However, over and over time, we witness a group of people who repeatedly steal for no apparent reason, other than to carry out their urges or impulses to steal, and to relieve themselves of the tension and compulsion. In fact, some of the thefts are so senseless that they drive mental health professionals to take a closer look at the phenomenology to try to understand it better. 10
- 3 Kleptomania is characterised by repetitive and uncontrollable impulses i.e. stealing of items not needed for personal use, not out of anger or vengeance. The individual feels tense before the theft and feels relieved and satisfied after the deed. They steal for symptomatic relief rather than for personal gain. A long-standing condition (course), the causes of Kleptomania are unknown. There are no specific predictors as to who are more likely to develop Kleptomania, but research findings indicate a high prevalence of family history of psychiatric disorders. It is also more common in women. 15
20
- 4 The typical age of onset is late adolescence or early adulthood, though it is also seen in individuals of a wide age range from children to the elderly. It is indeed a rare condition as it is estimated less than five percent of identified shoplifters are kleptomaniac. Fears of being apprehended are common, so are depression and feelings of shame and guilt about the theft.
- 5 Individuals with Kleptomania usually also have some other co-existing conditions like mood and anxiety disorders, eating disorders, substance abuse disorders, personality disorders and another impulse control conditions. Being apprehended for their stealing behaviour is more a norm than an exception in this group. 25
- 6 Researchers have also identified another group of shoplifters who display senseless shoplifting behaviour. They are usually referred by lawyers who feel perplexed by the shoplifters' offences, and want them sent for forensic psychological assessment. They usually steal when they are under stress, as doing such is their way of coping with negative emotions and losses in life. 30
- 7 However, despite multiple arrests and convictions, individuals with these disorders tend to maintain their behaviour, unless treatment and intervention are put in place and in time. In terms of treatment, it has been found that cognitive behavioural therapy, when used in combination with medication (e.g. Selective serotonin re-uptake inhibitors [SSRIs] that target impulsivity, anxiety and depression) is effective in managing the condition. Educational programmes also have a role to impart knowledge and understanding. 35
- 8 Individuals suffering from the disorder will need to watch out for their triggers, patterns and high-risk situations, e.g. time, place, people and respective mood. They have to learn more effective and appropriate skills to cope and deal with negative emotions, as well as stress-relieving techniques. 40
- 9 If there is another comorbid psychiatric condition, like depression or eating disorder, these comorbidities will also need to be treated and managed. The prognosis of treated kleptomania

usually is quite promising. Having supportive family members who understand the condition and facilitate treatment is also important, e.g. accompanying the individuals when shopping. 45

- 10 Whether it is kleptomania or senseless stealing, other than being distressing to the sufferers, also poses serious legal repercussions to the afflicted, and seriously affects their study, work and family life. While treatment is available and highly successful, early detection or identification of the condition, and concurrent treatment of comorbid psychiatric disorders are important. 50

*Adapted from 'Kleptomania' by Dr Munidasa Winslow
The Read, Asian Geographic, Issue 7, 2012*



West Spring Secondary School

MID-YEAR EXAMINATION 2019

ENGLISH LANGUAGE
Paper 2 Comprehension

1128/02

SECONDARY 3 EXPRESS

Name _____ () **Date** 6 May 2019

Class _____ **Duration** 1 hour

Additional Materials: Insert

READ THESE INSTRUCTIONS FIRST

Write your index number, class and name on all the work you hand in.

Write in dark blue or black pen.

Do not use staples, paper clips, highlighters, glue or correction fluid.

Answer **all** questions.

Write your answers in the spaces provided in the Question Booklet.

The Insert contains the text for all the questions.

The number of marks is given in brackets [] at the end of each question or part question.

FOR EXAMINER'S USE

Total

/25

This document consists of 4 printed pages and 1 Insert.

Setter(s) Ms. Veronica Aw

[Turn over

WSSS MYE 2019/SEC3/EXP/P2

PartnerInLearning

More papers at www.stpapersfree.com

[25 marks]

Refer to text in the Insert for Questions 1 – 8.

For
Examiner's
Use

1 What is the writer suggesting about Kleptomania when he uses "As early as 1911" (line 1)?

.....
.....

[1]

2 From Paragraph 1, why do you think early psychologists find it hard to understand Kleptomania?

.....
.....

[1]

3 From lines 8 – 9, explain in your own words why the moralists feel that Kleptomania does not exist?

.....
.....

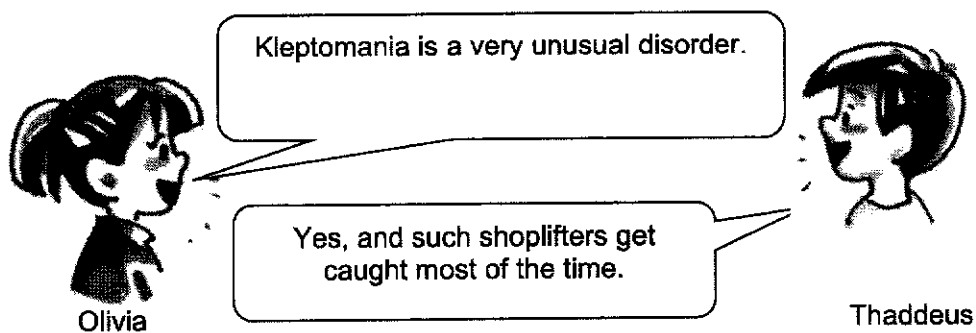
[2]

4 From Paragraph 3, which word suggests that Kleptomania is a need or desire represented by a strong and unreflective action to steal?

.....

[1]

5 Below is part of a conversation between two students and their opinions of Kleptomania and shoplifters who have this disorder.



(i) Pick out **two** details from Paragraph 4 that Olivia can give to support her view.

.....
.....

[2]

ANSWER KEY

Section A [10 marks]

Carefully read the text below, consisting of 12 lines, about the stress that students face. The first and last lines are correct. For eight of the lines, there is one grammatical error in each line. There are two more lines with no errors.

If there is NO error in a line, put a tick (✓) in the space provided.

If the line is incorrect, circle the incorrect word and write the correct word in the space provided.

The correct word you provide must not change the original meaning of the sentence.

Examples:

I arrived to my destination at 2pm.at.....

My mother always wears sensible clothes.✓.....

<p>According to a study by ValueChampion, a financial analysis and comparison website, the safer country in Asia Pacific for women to live in is none other than Singapore. It ranked Singapore and New Zealand in joined first place in a list of the safest countries for women to live in, citing their "impressive healthcare, safe and opportunity indicators". The study ranked 14 countries in Asia Pacific using a weighted average which weighted safety the most, followed by healthcare and opportunity. It said that Singapore and New Zealand has consistently scored well on global indices. This indicates that Singapore and New Zealand have "low levels of internal and international conflicts, suffer minor gender inequality but see positive developmental and opportunity growth potential", it says. Furthermore, according to the study, both countries have low crime rates and existing law against domestic assault and sexual harassment. Singapore even has "one off the lowest homicide rates in the world", it added.</p> <p><i>Adapted from https://www.businessinsider.sg/singapore-is-the-safest-asian-country-for-women-to-live-in</i></p>	<p>(1)...safest(sup) (2)...joint(adj)... (3)...safety(wf)... (4)...✓... (5)... have(sva).. (6)... ✓... (7)...and(conj)... (8)...said(t)... (9)...laws(plu)... (10)..of(pre)...</p>
--	---

[25 marks]

Refer to Text 1 on page 5 of the Insert for Questions 1 – 8.

- 1 What is the writer suggesting about Kleptomania when he uses “As early as 1911” (line 1)?

It is to indicate that Kleptomania is not a new discovery / is a condition that has plagued victims for a very long time (even before 1911). [1]

(Other possible answers: existed since many years ago)

(X: old condition)

- 2 From Paragraph 1, why do you think early psychologists find it hard to understand Kleptomania?

People who have this illness have no motive / intention to steal. [1]

(Other possible answers: steal for no reason)

- 3 From lines 8 – 9, explain in **your own words** why the moralists feel that Kleptomania does not exist?

They attributed the cause of stealing to simply a desire to have [covet] for [more] wealth [1] and having an intent to cheat [1]. [2]

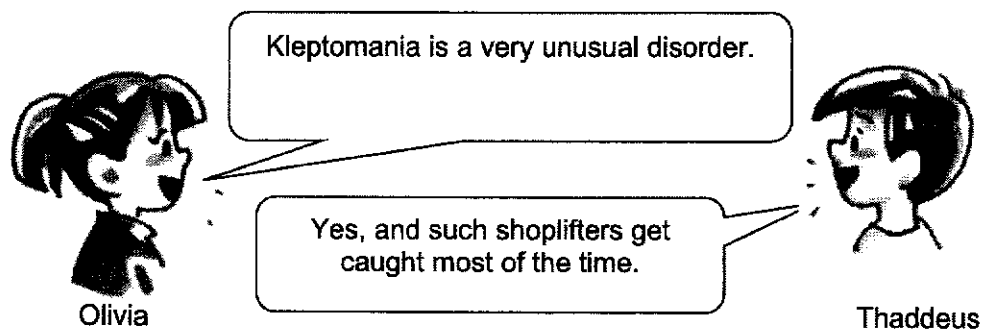
(Other possible answers: a desire to possess more wealth, want everything, hunger for more wealth; deceitful, untrustworthy, liars, no integrity)

(X: “greed” / “dishonest”/ money-driven / possess more money)

- 4 From Paragraph 3, which word suggests that Kleptomania is a need or desire represented by a strong and unreflective action to steal?

The word is “impulses”. [1]

- 5 Below is part of a conversation between two students and their opinions of Kleptomania and shoplifters who have this disorder.



- (i) Pick out **two** details from Paragraph 4 that Olivia can give to support her view.

It is indeed a rare condition as it is estimated less than five percent of identified shoplifters are kleptomaniac. [2]

(ii) Which expression in Paragraph 5 can Thaddeus use to support his view?

The phrase is "apprehended for their stealing behaviour is more a norm [than an exception]". [1]

6 In Paragraph 5, we are told that individuals with Kleptomania usually have some other "co-existing conditions" (line 25). What does this mean?

These individuals also have other [psychological] disorders/conditions at the same time. [1]

7 With reference to Paragraph 6, give **one** reason why some people steal.

They steal as they are under stress / it is their way of coping with negative emotions in life. [1]

- 8 **Using your own words as far as possible**, summarise the treatment and intervention strategies for individuals with Kleptomania.

Use only information from paragraphs 7 to 9.

Your summary must be in continuous writing (not point form). It must not be longer than 80 words, not counting the words given to help you begin.

There are several treatment and intervention measures such as undergoing...

	From Text	Own Words (75 words, Pt 1 – 10)
1	cognitive behavioural therapy, when <u>used in combination</u> with medication	cognitive behavioural therapy <u>together with</u> giving medicine to the patients . (10) (X combining)
2	Educational programmes also have a role to <u>impart knowledge and understanding.</u>	Patients also <u>need to have information</u> about the illness through educational campaigns / Patients also <u>need to be aware</u> of their condition through education efforts.(12) (Answers must have the element of "learning + Educational programme")
3	<u>Individuals suffering from the disorder</u> will need to <u>watch out</u>	<u>Patients</u> need to be <u>alert to</u> (5)
4	for their <u>triggers, patterns and high-risk situations</u>	the <u>causes of their illness, trends and dangerous contexts.</u> (9)
5	They have to <u>learn more effective and appropriate skills</u>	<u>Useful and suitable coping strategies must be mastered.</u> (12)
6	to <u>cope and deal</u> with negative <u>emotions</u>	to <u>handle</u> negative <u>feelings.</u> (4)
7	as well as <u>stress relaxation techniques.</u>	<u>They also should find ways to relax.</u> (7)
8	If there is another <u>comorbid</u> psychiatric condition,	If they have <u>co-existing</u> mental conditions, (5)
9	these comorbidities will also need to be <u>treated and managed</u>	such illnesses need to be <u>addressed</u> (6) (accepted: suppressed)
10	Having <u>supportive family members</u>	Having <u>encouraging family members.</u> (4)
11	<u>who understand the condition</u>	<u>who comprehend the illness</u> (4)
12	and <u>facilitate</u> treatment is also <u>important</u>	and <u>assist</u> in the treatment is <u>crucial.</u> (7)

[15]

**YISHUN SECONDARY SCHOOL***We Seek, We Strive, We Soar***MID-YEAR EXAMINATION**

Name: _____ Reg. No: _____ Class: _____

Secondary 3 Express**ENGLISH LANGUAGE****1128/01**

Paper 1 Writing

2 May 2019**INSERT****1 hour 50 minutes**

READ THESE INSTRUCTIONS FIRST:

This Insert contains the text for **Section B**.

This document consists of 2 printed pages including the cover page.

Section B

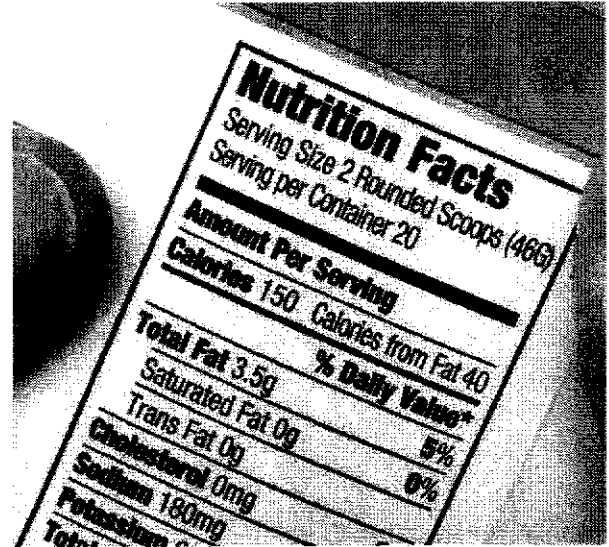
Read the printout below and use the information to answer the question on page 3 of the Question Booklet.

Sample Healthy Alternatives



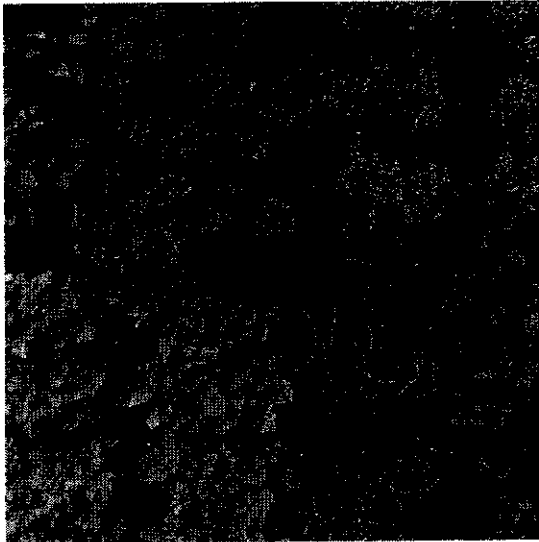
Participate in the food sampling trail, going around the carnival to sample a variety of local delicacies prepared using more healthy ingredients and cooking methods.

Attend a Talk



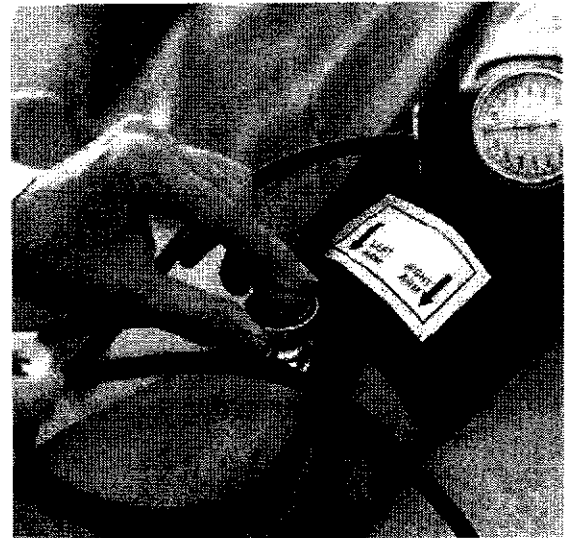
Participate in a talk that teaches you how to read food labels. Learn how to understand what they mean.

Take a Tour



Take a student-guided tour round the herbs and spices garden to learn about how these can be used to increase flavours of dishes.

Know Your Health Status



Measure your blood pressure and cholesterol level. Speak to the nurses from Khoo Teck Puat Hospital who will set up a booth at the carnival.



YISHUN SECONDARY SCHOOL
We Seek, We Strive, We Soar
MID-YEAR EXAMINATION

Name: _____ Reg. No: _____ Class: _____

Secondary 3 Express

ENGLISH LANGUAGE

1128/01

Paper 1 Writing

2 May 2019

1 hour 50 minutes

Candidates answer in the Question Booklet.

Additional Materials: Insert

Max Marks: 50

READ THESE INSTRUCTIONS FIRST:

Write your name, class and index number on all the work you hand in.

Write in dark blue or black pen.

Do not use staples, paper clips, glue or correction fluid.

Answer **Section A**, **Section B** and one question from **Section C**.

Write your answers in the spaces provided in the Question Booklet.

The Insert contains the text for **Section B**.

The number of marks is given in brackets [] at the head of each section.

At the end of the examination, submit this **Insert** and the **Question Booklet** separately.

This document consists of **12** printed pages including the cover page.

Section B [30 marks]

You are advised to write between 250 and 350 words for this section.

You should look at the poster in the insert carefully and plan your answer before beginning to write.

Your school is organising its annual Food Carnival during the post-examination period. Through this carnival, your school would like to promote healthy eating habits and allow for an enjoyable learning experience among your schoolmates and their family. The teacher-in-charge of the carnival has prepared a poster for the carnival. As the Chairperson of the organising committee, you have been asked to refer to the poster and deliver a speech to your schoolmates during the assembly. Write your speech stating clearly:

- one activity shown in the poster that your schoolmates might take part in with their families
- one other activity not shown in the poster that may interest them
- how the suggested activities fulfil the objectives of the carnival
- how you would organise these two activities

Write your speech in clear, accurate English and in an enthusiastic and persuasive tone, to convince your schoolmates to participate in the carnival with their family.

You should use your own words as much as possible.

A series of horizontal dotted lines for writing.

