

ANGLO-CHINESE SCHOOL
(JUNIOR)



CONTINUAL ASSESSMENT 2 (2013)
PRIMARY 3

SCIENCE

BOOKLET A

Monday

26 August 2013

50 minutes

Name : _____ ()

Class : P3 ___

INSTRUCTIONS TO PUPILS

DO NOT TURN OVER THE PAGES UNTIL YOU ARE TOLD TO DO SO

Follow all instructions carefully.

There are 12 questions in this booklet.

Answer **ALL** questions.

INFORMATION FOR PUPILS

The total marks for this booklet is 24.

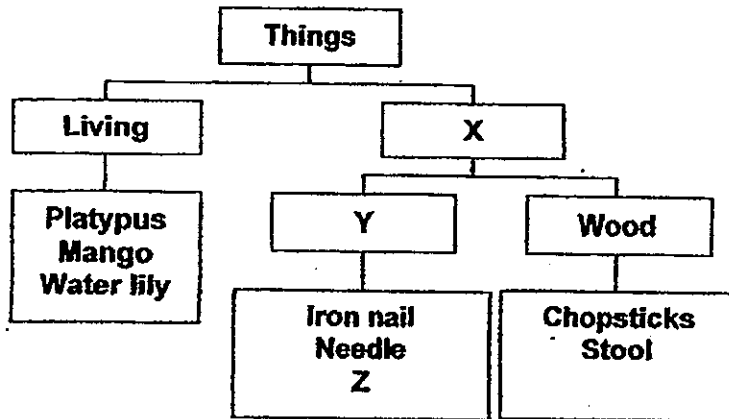
The total time for Booklets A and B is 50 minutes.

This question paper consists of 6 printed pages. (Inclusive of cover page)

Section A (24 marks)

For each question from 1 to 12, four options are given. One of them is the correct answer. Make your choice (1, 2, 3 or 4). Shade your answer on the Optical Answer Sheet.

- 1 The classification chart below shows how some things were classified according to certain characteristics.



Which of the following clearly represents letters X, Y and Z?

	X	Y	Z
(1)	Ceramic	Metal	Paper bag
(2)	Non-living	Metal	Paper clip
(3)	Non-living	Plastic	T-shirt
(4)	Rubber	Fabric	Coin

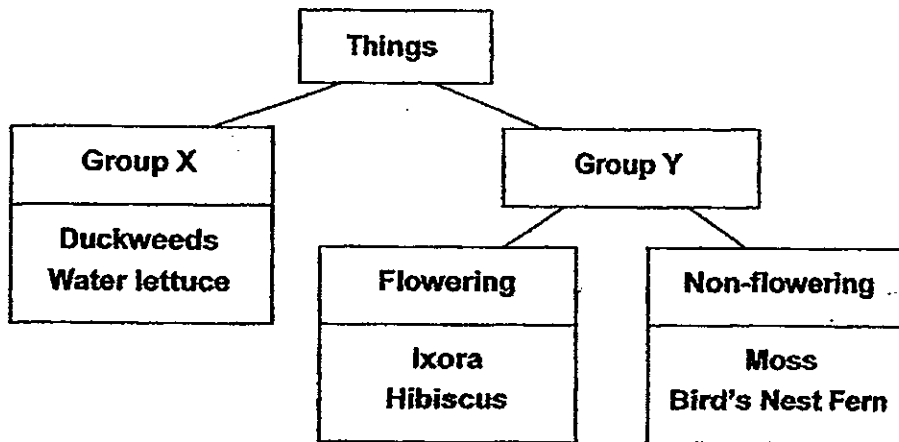
- 2 Jensen observed two animals, P and Q, and recorded his observations in the table below.

Characteristics	Animal P	Animal Q
Has gills	No	Yes
Has legs	Yes	No
Has wings	Yes	No
Gives birth to its young alive	No	No

Which of the following could be animals P and Q?

	Animal P	Animal Q
(1)	Mammal	Fish
(2)	Insect	Bird
(3)	Bird	Fish
(4)	Mammal	Insect

3 The classification chart below shows how some things can be classified.



Which of the following sub-headings are most suitable for Groups X and Y?

	X	Y
(1)	Flowers that grow singly	Flowers that grow in clusters
(2)	Water plants	Land plants
(3)	Has strong stem	Has weak stem
(4)	Has large leaves	Has small leaves

4 Which of the following is a living thing?

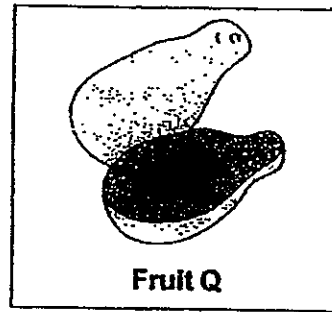
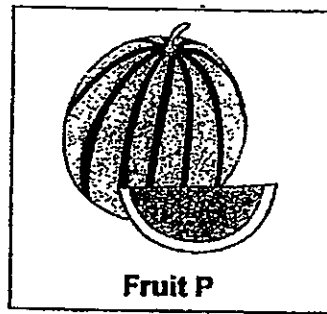
- (1) Cave
- (2) Fern
- (3) Stone
- (4) Ocean

5 How is the dragon scale fern different from a fungus?

- P It does not have flowers.
- Q It can make its own food.
- R It reproduces from spores.

- (1) P only
- (2) Q only
- (3) P and R only
- (4) Q and R only

6 The diagrams below show two fruits.



Based only on your observation of the above fruits, how are they similar?

- (1) They have rough skin.
- (2) They have many seeds.
- (3) They have similar shapes.
- (4) They have a similar pattern.

7 Joy read about some animals in an encyclopaedia and grouped them as shown below.

Group A	Group B
Molly Guppy Dolphin	Cat Giraffe Elephant

She grouped the animals according to _____.

- W** where they live
- X** how they move
- Y** their outer coverings
- Z** the way they reproduce

- (1) W and X only
- (2) W and Z only
- (3) X and Y only
- (4) Y and Z only

8 Candy has written a riddle that describes an animal. Read the riddle below carefully.

"I live in a tree.
I can fly and walk.
My babies hatch from the eggs I lay.
What am I?"

The riddle best describes a _____.

- (1) bat
- (2) lizard
- (3) mynah
- (4) platypus

9 Yvonne wanted to find out if the presence of light would affect the growth of fungi. She prepared two set-ups for the experiment.

She listed some variables which may affect the results of her experiment.

- A the amount of air present in the surroundings
- B the amount of light present in the surroundings
- C the amount of moisture present in the surroundings

Which of the above variable(s) must Yvonne keep the same for the two set-ups to ensure a fair test?

- (1) B only
- (2) A and C only
- (3) B and C only
- (4) A, B and C

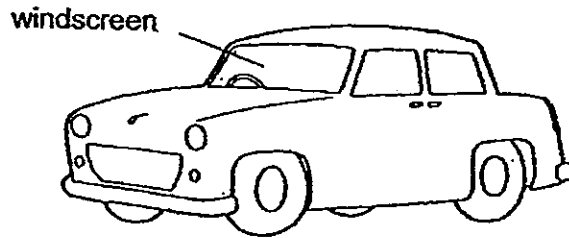
10 Joan has classified some objects as shown below.

Group X	Group Y
Plate	Cushion
Fork	Pillow
Cup	Bed

Which of the following are the correct headings for Group X and Group Y?

	Group X	Group Y
(1)	Found in kitchen	Found in bedroom
(2)	Made of plastic	Made of wood
(3)	Found in bathroom	Found in living room
(4)	Made of fabric	Made of ceramic

- 11 A car manufacturer has to decide on the best material to make the windscreen of a car. Some information on the four available materials is shown in the table below.

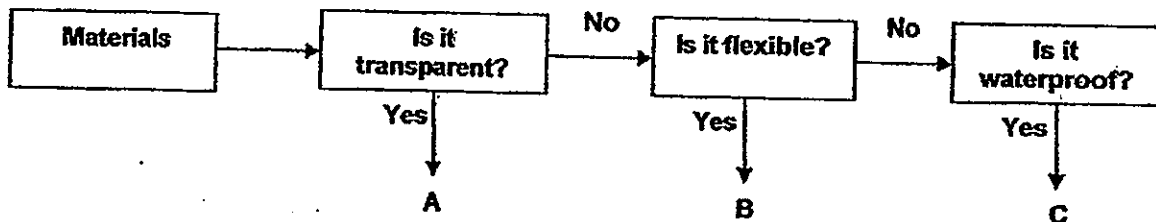


Material	Properties
P	Soft, waterproof and transparent
Q	Hard; waterproof and transparent
R	Soft, able to float on water and long-lasting
S	Hard, able to float on water and long-lasting

Which material is most suitable for making the windscreen?

- (1) P
- (2) Q
- (3) R
- (4) S

- 12 Study the flow chart below.



Which materials could A, B and C be?

	A	B	C
(1)	glass	cloth	plastic
(2)	wood	rubber	metal
(3)	glass	metal	rubber
(4)	cloth	plastic	wood

ANGLO-CHINESE SCHOOL
(JUNIOR)



CONTINUAL ASSESSMENT 2 (2013)
PRIMARY 3

SCIENCE

BOOKLET B

Monday

26 August 2013

50 minutes

Name : _____ ()

Class : P3 _____

INSTRUCTIONS TO PUPILS

DO NOT TURN OVER THE PAGES UNTIL YOU ARE TOLD TO DO SO

Follow all instructions carefully.

There are 6 questions in this booklet.

Answer ALL questions.

INFORMATION FOR PUPILS

The number of marks is given in brackets [] at the end of each question or part question.

The total marks for this booklet is 16.

The total time for Booklets A and B is 50 minutes.

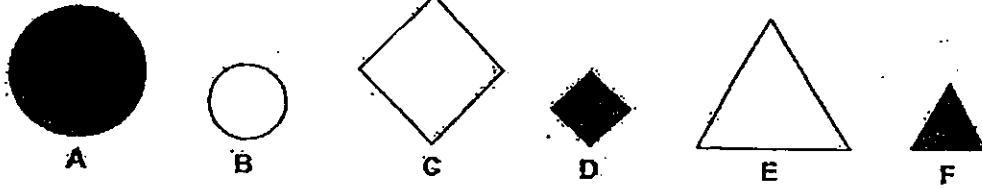
This question paper consists of 7 printed pages. (Inclusive of cover page)

PRACTICAL	/ 10
BOOKLET A	/ 24
BOOKLET B	/ 16
TOTAL	/ 50
Parent's signature/ Date:	

Section B (16 marks)

For each question from 13 to 18, write your answer in the spaces provided

13 Kelly was given six figures, A, B, C, D, E and F, as shown below.



(a) State one characteristic which Kelly could use to classify the six figures into two groups so that there is an equal number of figures in each group. [1]

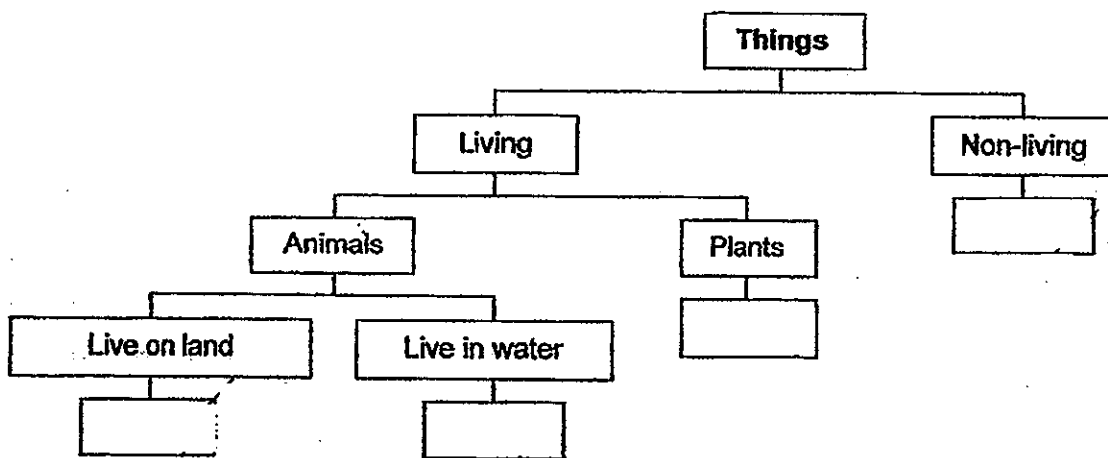
(b) Use another characteristic to regroup the six figures. Write the letters (A, B, C) D, E, F) in the two new groups. [1]

Group 1:	Group 2:

- 14 The table below gives information about four things based on some characteristics. A tick (✓) shows that the thing has the characteristic and a cross (x) shows that the thing does not have that characteristic.

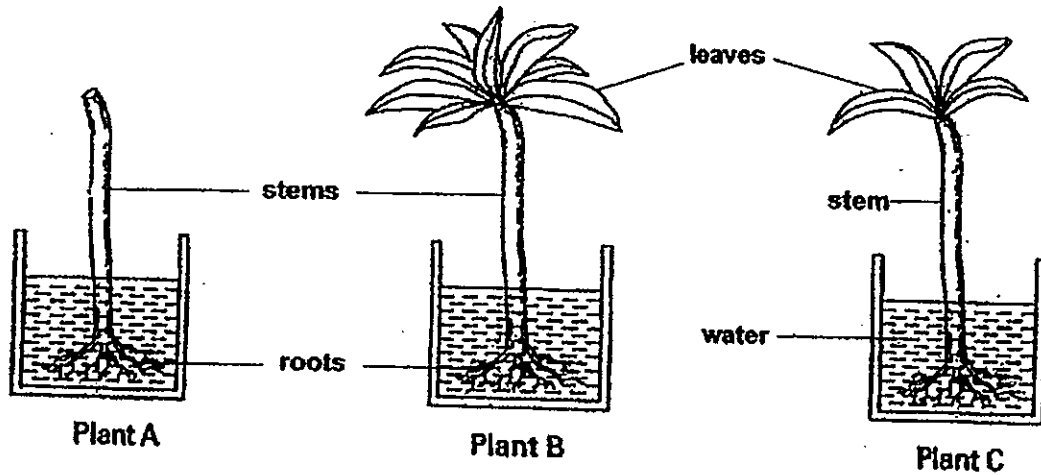
Characteristic	Thing			
	W	X	Y	Z
Can breathe through gills and can swim	✓	x	x	x
Can reproduce and can grow	✓	✓	x	✓
Needs air, water and food	✓	✓	x	✓
Can make its own food	x	✓	x	x

- (a) Fill in the boxes with the letter, W, X, Y or Z in the classification table below. [2]



- (b) Based on the information from the table and chart, name a living thing that has the same characteristics as W. [1]

15 Rachel used three similar plants, A, B and C, to conduct an experiment to find out how the number of leaves the plant has would affect the amount of water taken in by the plant. She removed all the leaves from Plant A, and some leaves from Plant C. She then placed each plant in a container filled with 550 ml of water shown in the diagram below.



After 2 days, Rachel measured the amount of the water in each container. The table below shows the amount of water left in each container.

Plant	Amount of water at first (ml)	Amount of water left after 2 days (ml)
A	550	530
B	550	410
C	550	470

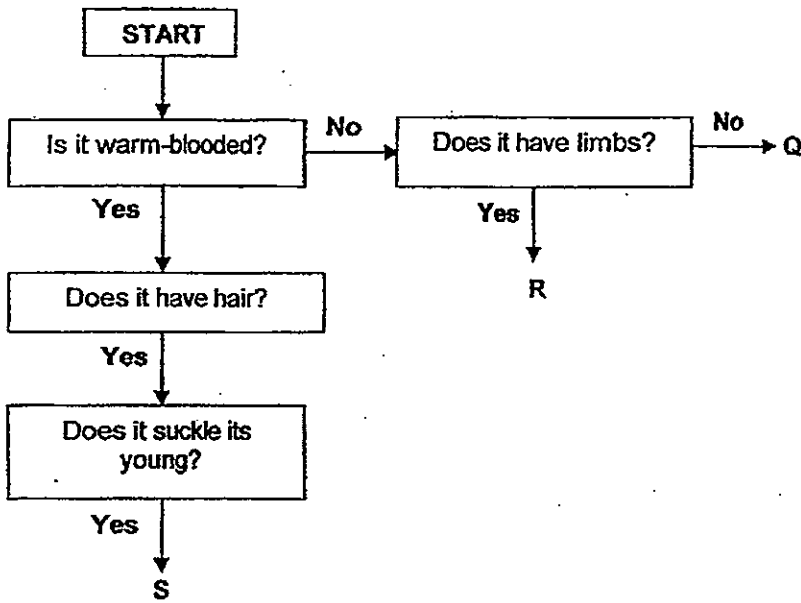
(a) Based on the results in the table, state if each of the following statement is 'True', 'False' or 'Not possible to tell' by putting a tick (✓) in the correct box. [2]

	Statement	True	False	Not possible to tell
(i)	Plant A took in the least amount of water.			
(ii)	Plant C took in more water than plant B.			

(b) Based on the results of the experiment, what can Rachel conclude? [1]

--

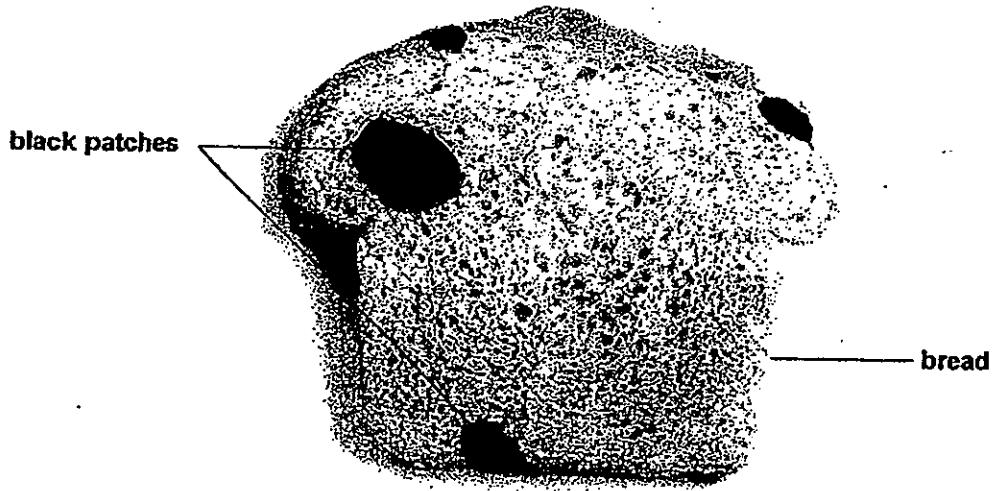
16 Study the flowchart carefully.



(a) Based on the flowchart, how is Q similar to R? [1]

(b) What type of animal could S be? [1]

- 17 Derek left a piece of bread in a plastic bag in the kitchen before he went on a tour for 2 weeks. When he reached home after 2 weeks, he found some black patches on the bread.



- (a) Derek's mother told him that the black patches are a type of micro-organisms. What type of micro-organisms are the black patches on the bread? [1]

- (b) List all the conditions needed for the micro-organisms to grow on the bread. [1]

- (c) What could Derek do to the piece of bread to prevent the micro-organism from growing on the bread? Why does this method work? [1]

--

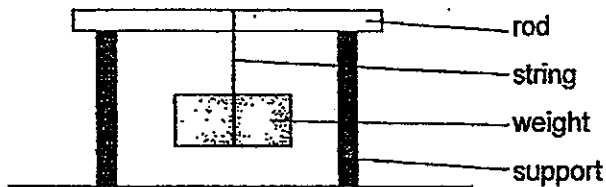
- 18 Luke had four rods made of materials P, Q, R and S. He used every one of the four rods to scratch the other rods and wrote his observation below. A material is considered to be hard if it can scratch another material.

Observation
S scratched Q only.
R did not scratch P only.
P scratched all the other three rods.
Q did not scratch all the other three rods.

- (a) Based on Luke's observation, which material is the hardest and which material is the softest? [2]

Hardest: _____ Softest: _____

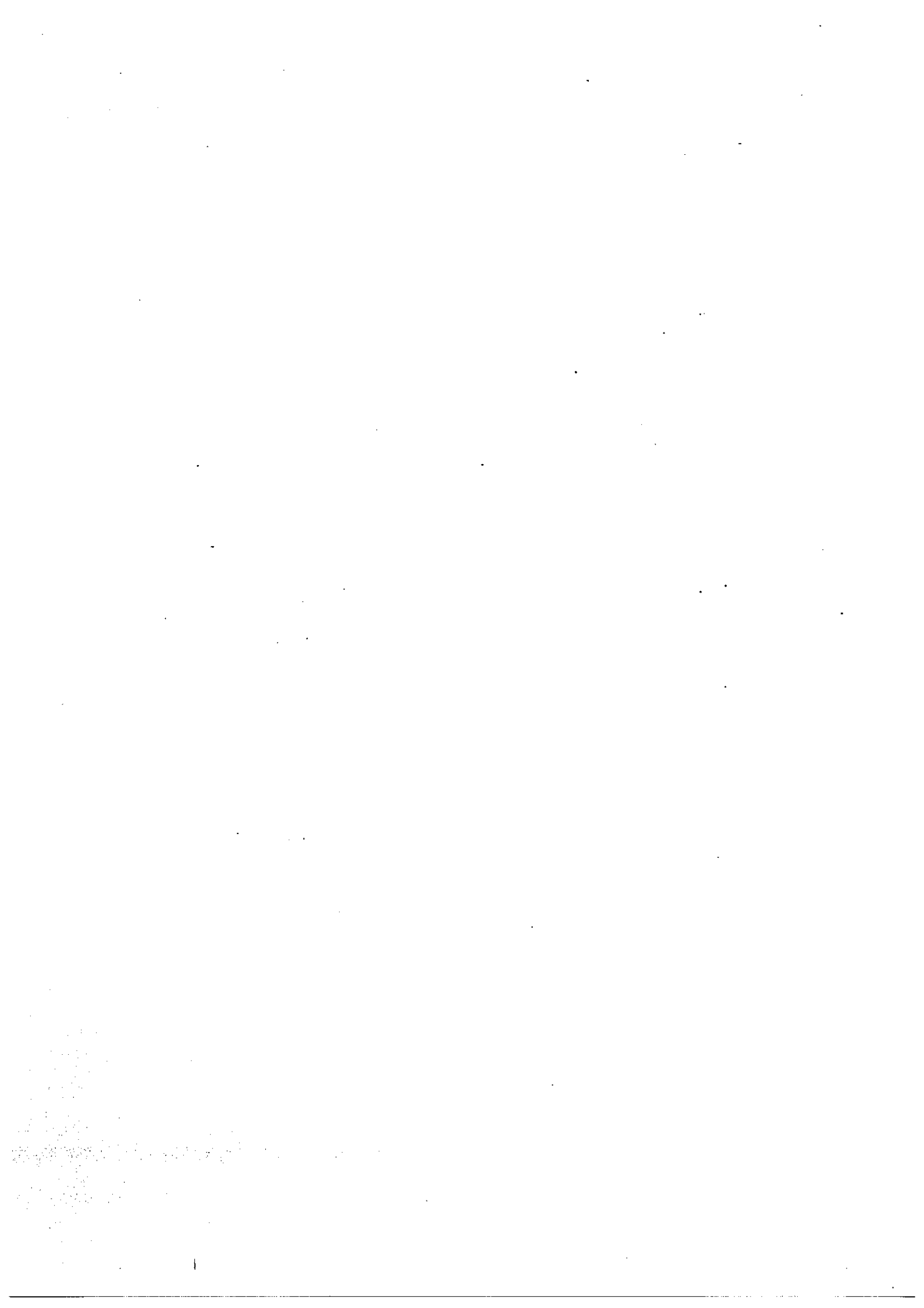
- (b) Luke then placed some weights on each of the four rods as shown below. He measured the mass of the weights added before the rod broke. He recorded his observation in the table below. A material is considered to be stronger if it can hold more weights than another material.



Rod	Mass of weight added before the rod broke
P	1050 g
Q	270 g
R	630 g
S	790 g

- Based on Luke's observation, which material is most suitable for making a bag that can carry 1 kg of apples? [1]

--



ANSWER SHEET

EXAM PAPER 2013

SCHOOL : ANGLO-CHINESE SCHOOL (JUNIOR)

LEVEL : PRIMARY 3

SUBJECT : SCIENCE

TERM : CA2

BOOKLET A

Q1	Q2	Q3	Q4	Q5	Q6	Q7	Q8	Q9	Q10	Q11	Q12
2	3	2	2	2	2	1	3	2	1	2	1

BOOKLET B

Q13

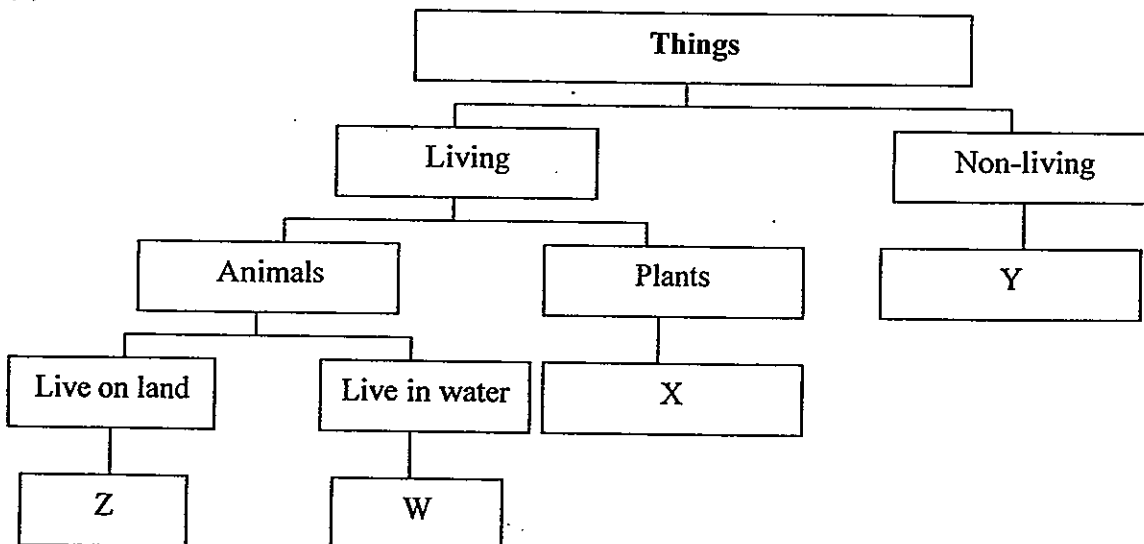
(a) The characteristic is size.

(b)

Group 1	Group 2
F D A	C B E

Q14

(a)



(b) A goldfish.

Q15

(a)

	Statement	True	False	Not possible to tell.
(i)	Plant A took in the least amount of water.	√		
(ii)	Plant C took in more water than plant B.		√	

(b)

Plants with more leaves take in more water.

Q16

(a) Both Q and R are not warm-blooded.

(b) A tiger.

Q17

(a) The micro-organism is mould.

(b) It needs air, food and water/moisture.

(c) He could toast the bread to remove moisture and make it dry.

Q18

(a) Hardest: P Softest: Q

(b) Rod P.